

# PRELIMINARY SURFICIAL GEOLOGY OF THE SUMNER COUNTY PORTION OF THE CONWAY SPRINGS QUADRANGLE, KANSAS

by Anthony L. Layzell

2023

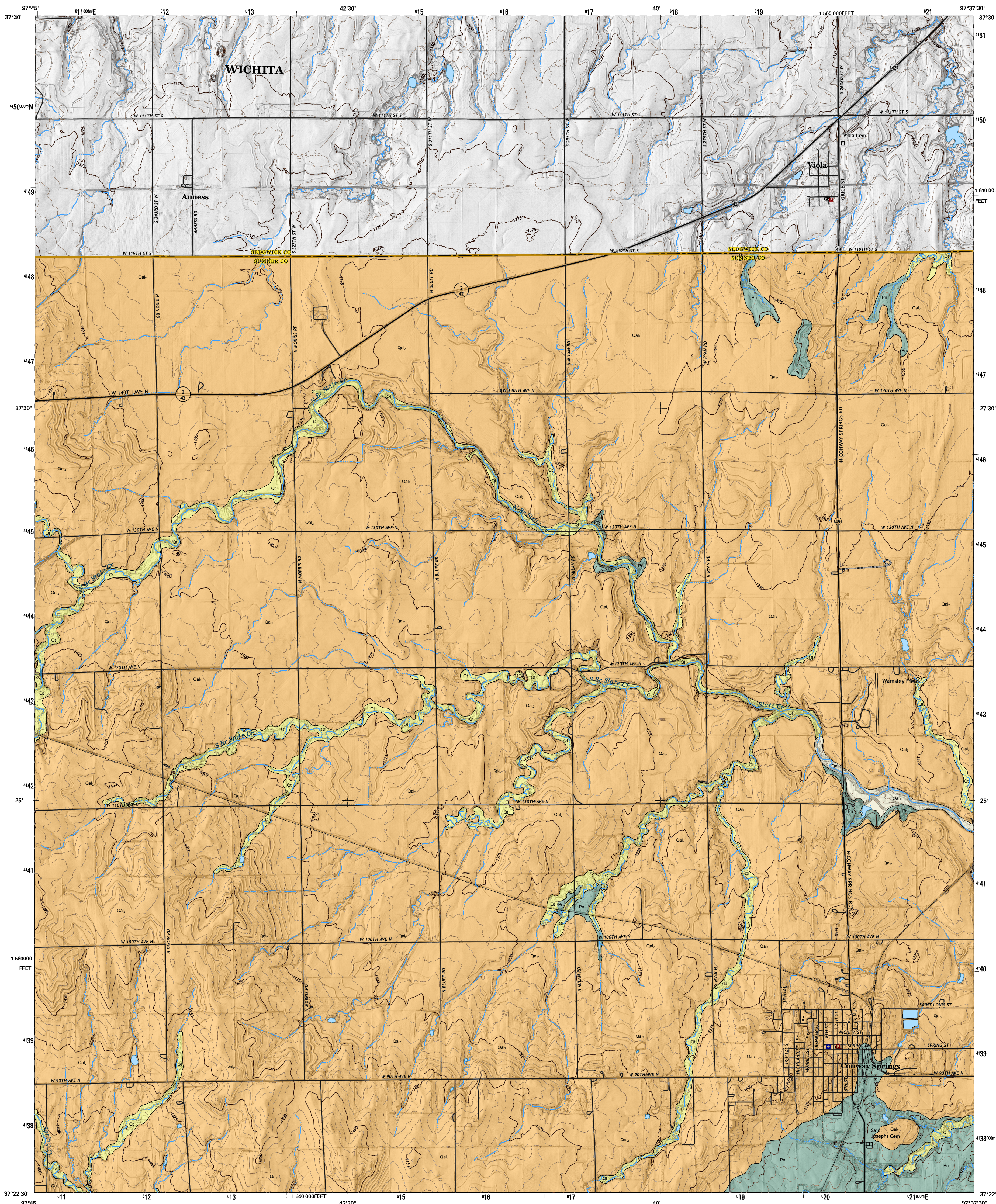
Computer compilation and cartography by Kolbe D. Andrzejewski

Open-File Report 2023-8

Funded in part by the  
USGS National Cooperative  
Geologic Mapping Program



CONWAY SPRINGS QUADRANGLE  
KANSAS  
7.5-MINUTE SERIES



### GEOLOGIC UNITS

#### CENOZOIC

##### Quaternary System

##### Holocene

- Qal<sub>1</sub> Undifferentiated floodplain alluvium
- Qt Alluvial terrace deposits
- Qal<sub>2</sub> Upland alluvium

#### PALEOZOIC

##### Permian System Leonardian Series Sumner Group

- Pn Ninesch Shale

### EXPLANATION

#### Geologic Unit Boundaries

— Observed contact

### SOURCES

Fenwick, R. W., and Ratcliff, L. W., Jr., 1979, Soil survey of Sumner County, Kansas: U.S. Department of Agriculture, Soil Conservation Service and Kansas Agricultural Experiment Station, 110 p.

Kansas Geological Survey, 2022, Master list of oil and gas wells in Kansas, <https://www.kgs.ku.edu/Magellan/Qualified/index.html>.

Kansas Geological Survey, 2022, Water well completion records (WWCS), <http://www.kgs.ku.edu/Magellan/WaterWell/index.html>.

Walters, K. L., 1961, Geology and ground-water resources of Sumner County, Kansas: Kansas Geological Survey, Bulletin 151, 198 p.

Elevation contours are presented for general reference. Used in the U.S. Geological Survey's current US Topo 1:24,000-scale topographic map series, they were generated from hydrographically-improved 1/3 arc-second National Elevation Dataset (NED) data and smoothed during processing for use at 1:24,000 scale. In some places, the contours may be more generalized than the base data used for compilation of geologic outcrop patterns. Outcrop patterns on the map will typically reflect topographic variation more accurately than the associated contour lines. Repeated fluctuation of an outcrop line across a contour line should be interpreted as an indication that the mapped rock unit is maintaining a relatively constant elevation along a generalized contour.

1-meter LiDAR hillshades and 1-meter 2020 U.S. Department of Agriculture - Farm Services Agency (USDA-FSA) National Agriculture Imagery Program (NAIP) digital imagery were used as references in the digital mapping. USGS 7.5-min 1:24,000-scale topographic maps, USDA Natural Resources Conservation Service (NRCS) soil surveys, and other geologic maps and bulletins were used to supplement the mapping. Roads and highways are shown on the base map as represented by data from the Kansas Department of Transportation (KDOT), U.S. Census Bureau, and other sources. USDA-FSA NAIP imagery also was used to check road locations.

Shaded relief is based on 1-meter hydroflattened bare-earth DEMs from the State of Kansas LiDAR Database. The DEM images, in ERDAS IMAGINE format, were mosaicked into a single output DEM and reprojected to decimal degrees. The output DEM was then converted to a hillshade, a multidirectional shaded-relief image using angles of illumination from 0°, 225°, 270°, and 315° azimuths, each 45° above the horizon, with a 4x vertical exaggeration.

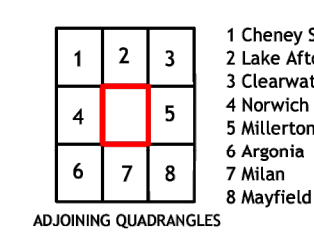
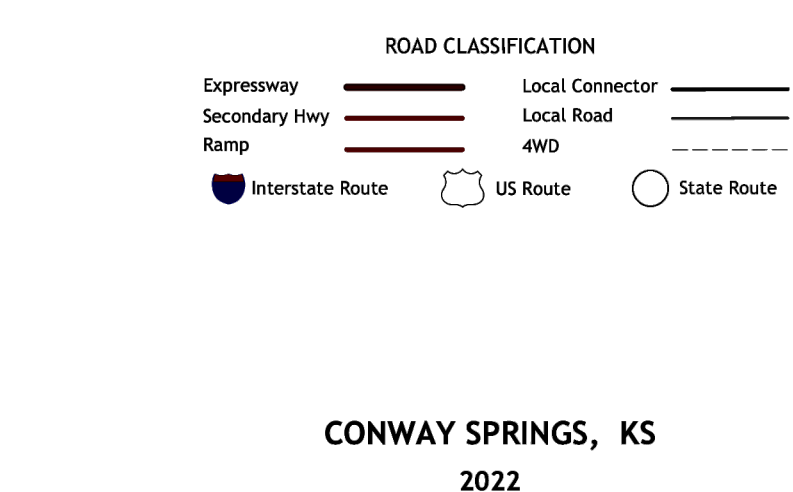
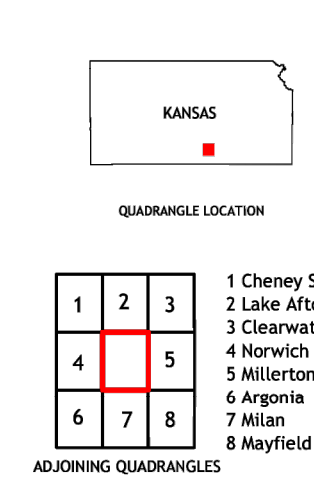
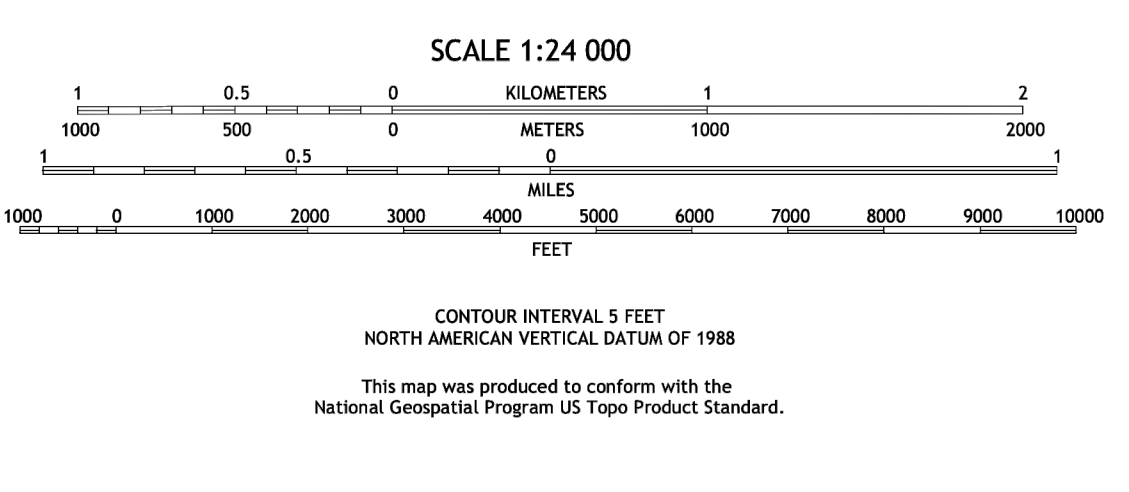
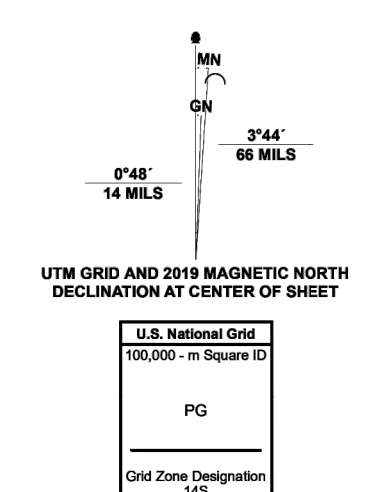
This geologic map was funded in part by the USGS National Cooperative Geologic Mapping Program, award number G21AC10803 (FY2021).

This map was produced using the ArcGIS system developed by Esri (Environmental Systems Research Institute, Inc.).

This map is a preliminary product and has had less scientific and cartographic review than the Kansas Geological Survey's M-series geologic maps. The KGS does not guarantee this map to be free from errors or inaccuracies and disclaims any responsibility or liability for interpretations made from the map or decisions based thereon.

**Produced by the United States Geological Survey**  
North American Datum of 1983 (NAD83). Projection and 1 000-meter grid: Universal Transverse Mercator, Zone 14S  
This map is not a legal document. Boundaries may be generalized for this map scale. Private lands within government reservations may not be shown. Obtain permission before entering private lands.

Imagery: NAIP, July 2017 - September 2017  
Roads: U.S. Census Bureau, 2015 - 2018  
Names: GNS, 1978 - 2021  
Hydrography: National Hydrography Dataset, 2004 - 2018  
Contours: National Elevation Dataset, 2017  
Boundaries: Multiple sources; see metadata file 2019 - 2021  
Public Land Survey System: BLM, 2018  
Wetlands: FWS National Wetlands Inventory 1985



CONWAY SPRINGS, KS  
2022