

PRELIMINARY SURFICIAL GEOLOGY OF THE SEDGWICK COUNTY
PORTION OF THE MILLERTON QUADRANGLE, KANSAS

by Kate A. Andrzejewski
2023

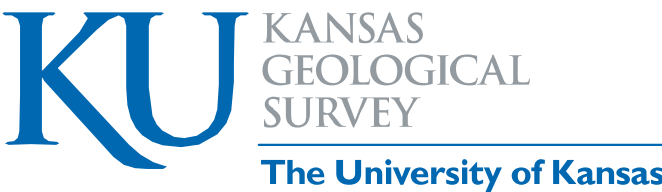
Computer compilation and cartography by Kolbe D. Andrzejewski



U.S. DEPARTMENT OF THE INTERIOR
U.S. GEOLOGICAL SURVEY

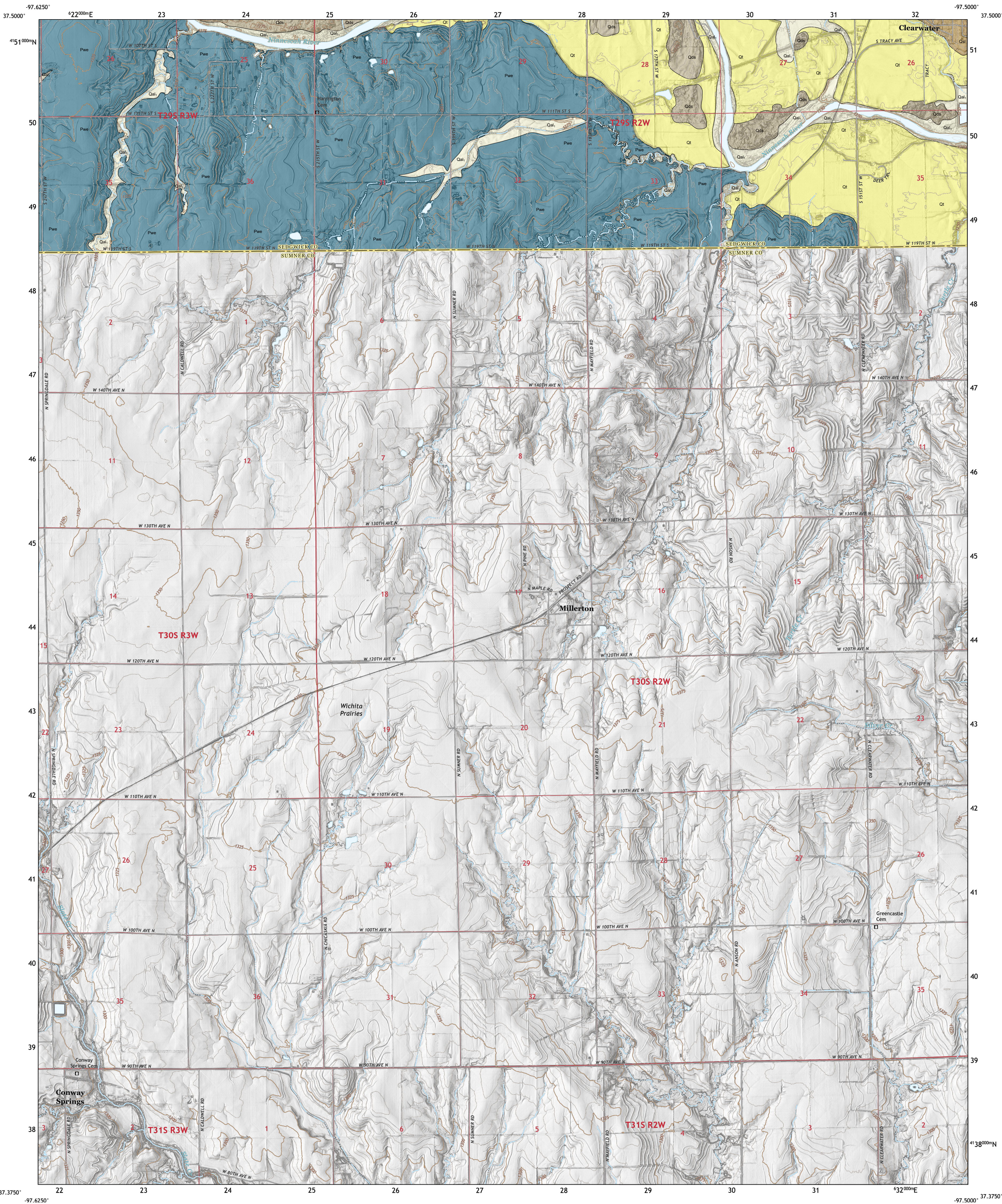


MILLERTON QUADRANGLE
KANSAS
7.5-MINUTE SERIES



Open-File Report 2023-25

Funded in part by the
USGS National Cooperative
Geologic Mapping Program



GEOLOGIC UNITS

CENOZOIC

Quaternary System
Holocene

Table with 2 columns: Unit symbol (Qal1, Qt, Qds, Qsl) and Unit description (Undifferentiated floodplain alluvium, Alluvial terrace deposits, Dune sand, Undifferentiated slope deposits).

PALEOZOIC

Permian System
Leonardian Series
Sumner Group

Table with 2 columns: Unit symbol (Pwe) and Unit description (Wellington Formation).

EXPLANATION

Geologic Unit Boundaries
Observed contact

SOURCES

- List of sources including Kansas Geological Survey, Lane, C. W., and Miller, D. E., Penner, H. L., and Wehmuller, W. A., Swineford, A., and Ver Wiebe, W. A.

Elevation contours are presented for general reference. Used in the U.S. Geological Survey's current US Topo 1:24,000-scale topographic map series...

1-meter LiDAR hillshades and 1-meter 2020 U.S. Department of Agriculture - Farm Services Agency (USDA-FSA) National Agriculture Imagery Program (NAIP) digital imagery were used as references in the digital mapping...

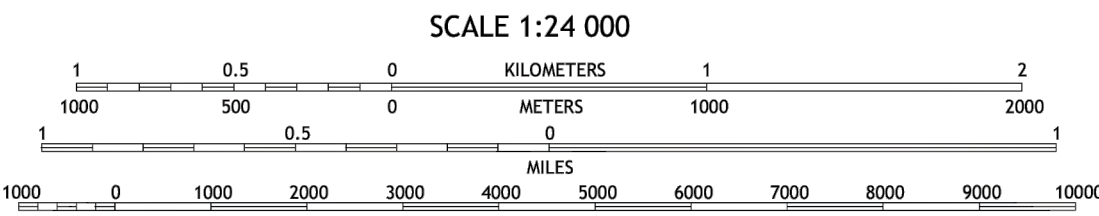
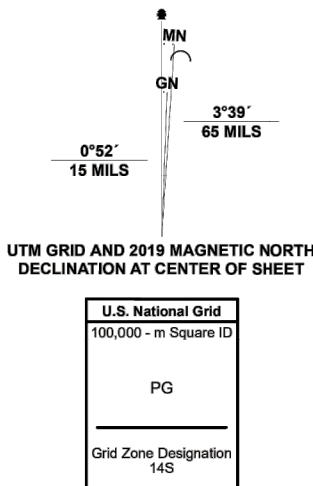
Shaded relief is based on 1-meter hydroflattened bare-earth DEMs from the State of Kansas LiDAR Database. The DEM images, in ERDAS IMAGINE format, were mosaicked into a single output DEM and reprojected to decimal degrees.

This geologic map was funded in part by the USGS National Cooperative Geologic Mapping Program, STATEMAP award number G22AC00574 (FY2022).

This map was produced using the ArcGIS system developed by Esri (Environmental Systems Research Institute, Inc.).

This map is a preliminary product and has had less scientific and cartographic review than the Kansas Geological Survey's M-series geologic maps. The KGS does not guarantee this map to be free from errors or inaccuracies and disclaims any responsibility or liability for interpretations made from the map or decisions based thereon.

Produced by the United States Geological Survey
North American Datum of 1983 (NAD83)
World Geodetic System of 1984 (WGS84)
Projection and 1 000-meter grid: Universal Transverse Mercator, Zone 14S



CONTOUR INTERVAL 5 FEET
NORTH AMERICAN VERTICAL DATUM OF 1988
This map was produced to conform with the National Geospatial Program US Topo Product Standard.

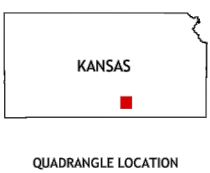


Table with 3 columns: 1, 2, 3; 4, 5; 6, 7, 8. Adjoining quadrangles.

ROAD CLASSIFICATION table with symbols for Expressway, Secondary Hwy, Ramp, Interstate Route, Local Connector, Local Road, 4WD, US Route, State Route.

MILLERTON, KS
2022

SUGGESTED REFERENCE TO THE MAP

Andrzejewski, K. A., 2023, Preliminary surficial geology of the Sedgwick County portion of the Millerton quadrangle, Kansas: Kansas Geological Survey, Open-File Report 2023-25, scale 1:24,000, unpublished.