

<North

9.5 miles

6.0 miles

7.0 miles

5.8 miles

South>

STRATIGRAPHIC CROSS-SECTION
PETRON RESOURCES CORE HOLES
Cass and Bates Counties, MO

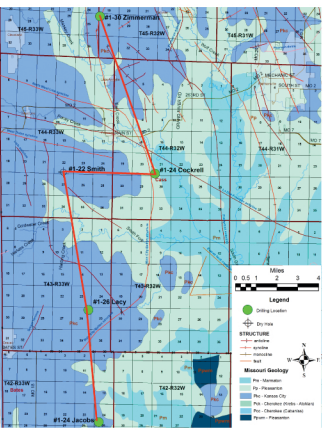
by
K. David Newell and Kenneth R. Stalder
Kansas Geological Survey
January, 2008

KEY

- limestone (packstone)
- limestone (mudstone)
- conglomerate
- sandstone (coarse)
- sandstone (fine)
- siltstone
- shale
- black shale
- coal
- lost core (Smith well only)
- underlay (Gilly)
- underlay (clayey)
- dolomite
- clayey
- brown calcarenite
- calcareous
- cherty
- of show
- description text
- (coal)
- (shale)

- correlation line, stratigraphic boundary
- correlation line, stratigraphic boundary inferred
- coal horizon
- coal horizon, but no coal
- erosional surface

INDEX MAP



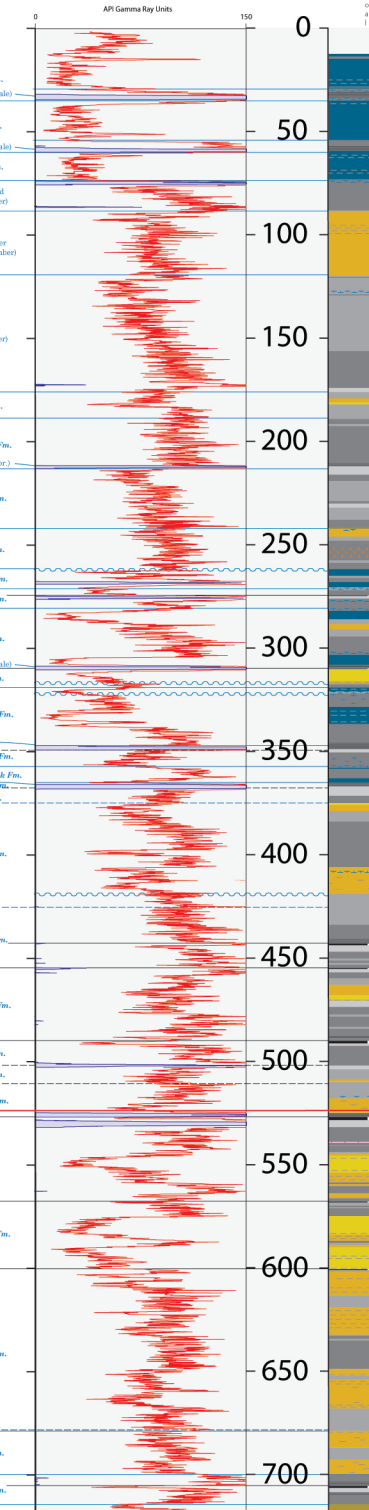
From Missouri Spatial Data Information Service: <http://www.missouri-sdis.com/>



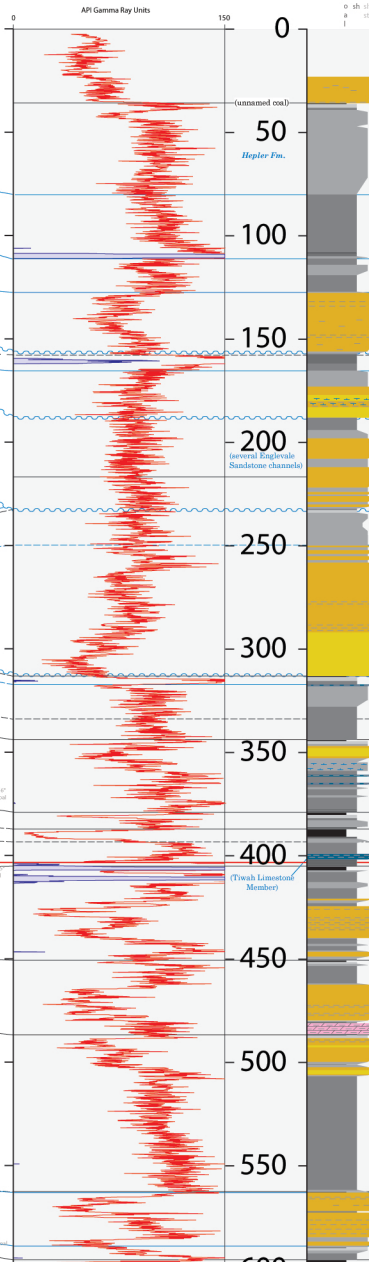
REFERENCES FOR STRATIGRAPHY
Bass, C.L., and Rogers, C., eds., 1986, Location of Stratigraphic Names in the Kansas Stratigraphic Column, Kansas Geological Survey Bulletin 205, p. 1-10.
Cox, C.H., ed., 1964, Kansas Stratigraphic Column, Kansas Geological Survey Bulletin 205, p. 1-10.
Hick, P., and Rogers, C., eds., 1986, Location of Stratigraphic Names in the Kansas Stratigraphic Column, Kansas Geological Survey Bulletin 205, p. 1-10.
Hick, P., and Rogers, C., eds., 1986, Location of Stratigraphic Names in the Kansas Stratigraphic Column, Kansas Geological Survey Bulletin 205, p. 1-10.
Hick, P., and Rogers, C., eds., 1986, Location of Stratigraphic Names in the Kansas Stratigraphic Column, Kansas Geological Survey Bulletin 205, p. 1-10.
Hick, P., and Rogers, C., eds., 1986, Location of Stratigraphic Names in the Kansas Stratigraphic Column, Kansas Geological Survey Bulletin 205, p. 1-10.
Hick, P., and Rogers, C., eds., 1986, Location of Stratigraphic Names in the Kansas Stratigraphic Column, Kansas Geological Survey Bulletin 205, p. 1-10.
Hick, P., and Rogers, C., eds., 1986, Location of Stratigraphic Names in the Kansas Stratigraphic Column, Kansas Geological Survey Bulletin 205, p. 1-10.
Hick, P., and Rogers, C., eds., 1986, Location of Stratigraphic Names in the Kansas Stratigraphic Column, Kansas Geological Survey Bulletin 205, p. 1-10.
Hick, P., and Rogers, C., eds., 1986, Location of Stratigraphic Names in the Kansas Stratigraphic Column, Kansas Geological Survey Bulletin 205, p. 1-10.

PENNSYLVANIAN
MISSISSIPPIAN

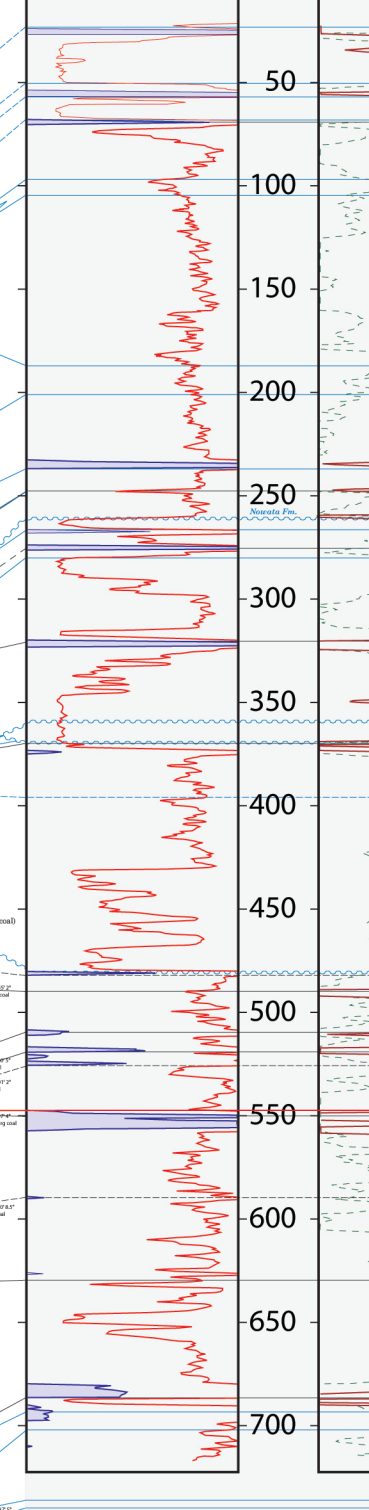
Petron Resources
Zimmerman #1-30



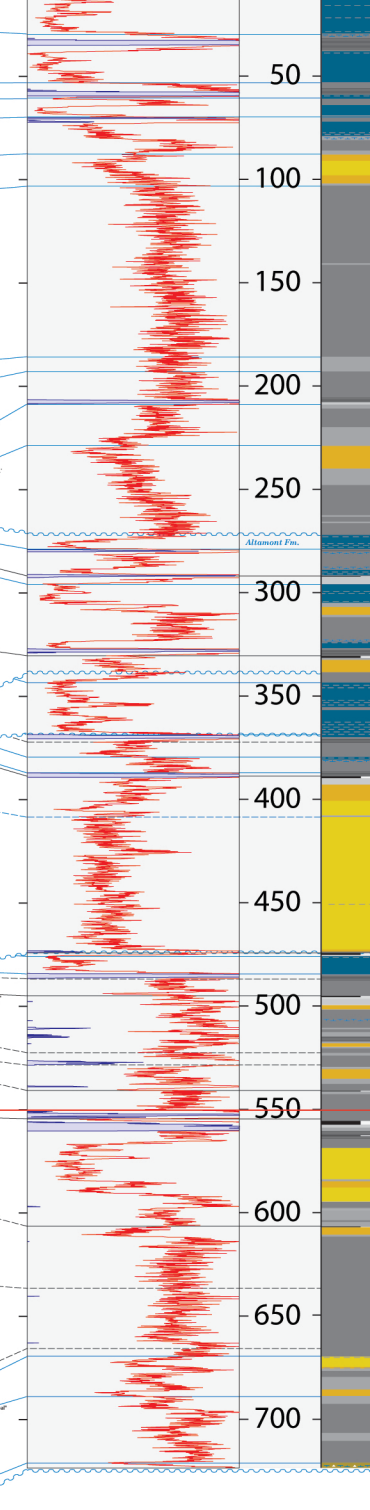
Petron Resources
Cockrell #1-21



Osborn Energy
Smith #1-22



Petron Resources
Lacy #1-26



Petron Resources
Jacobs #1-24

