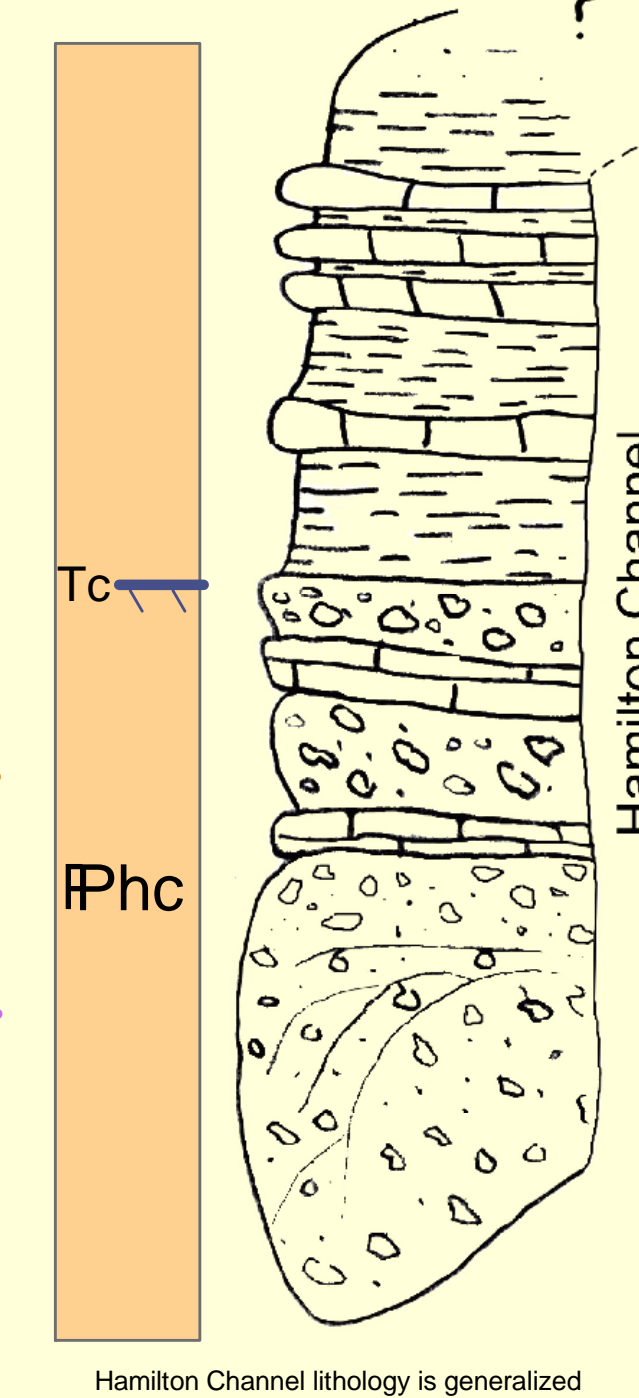
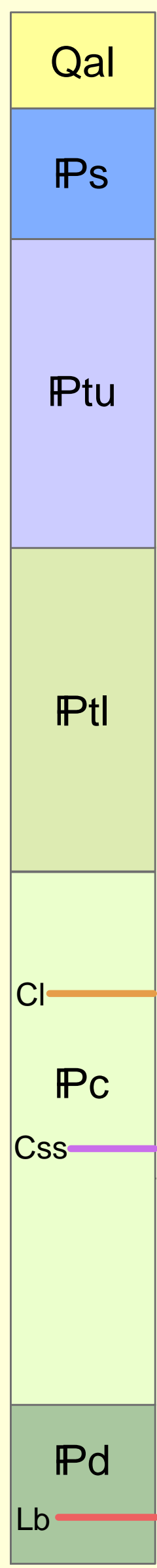
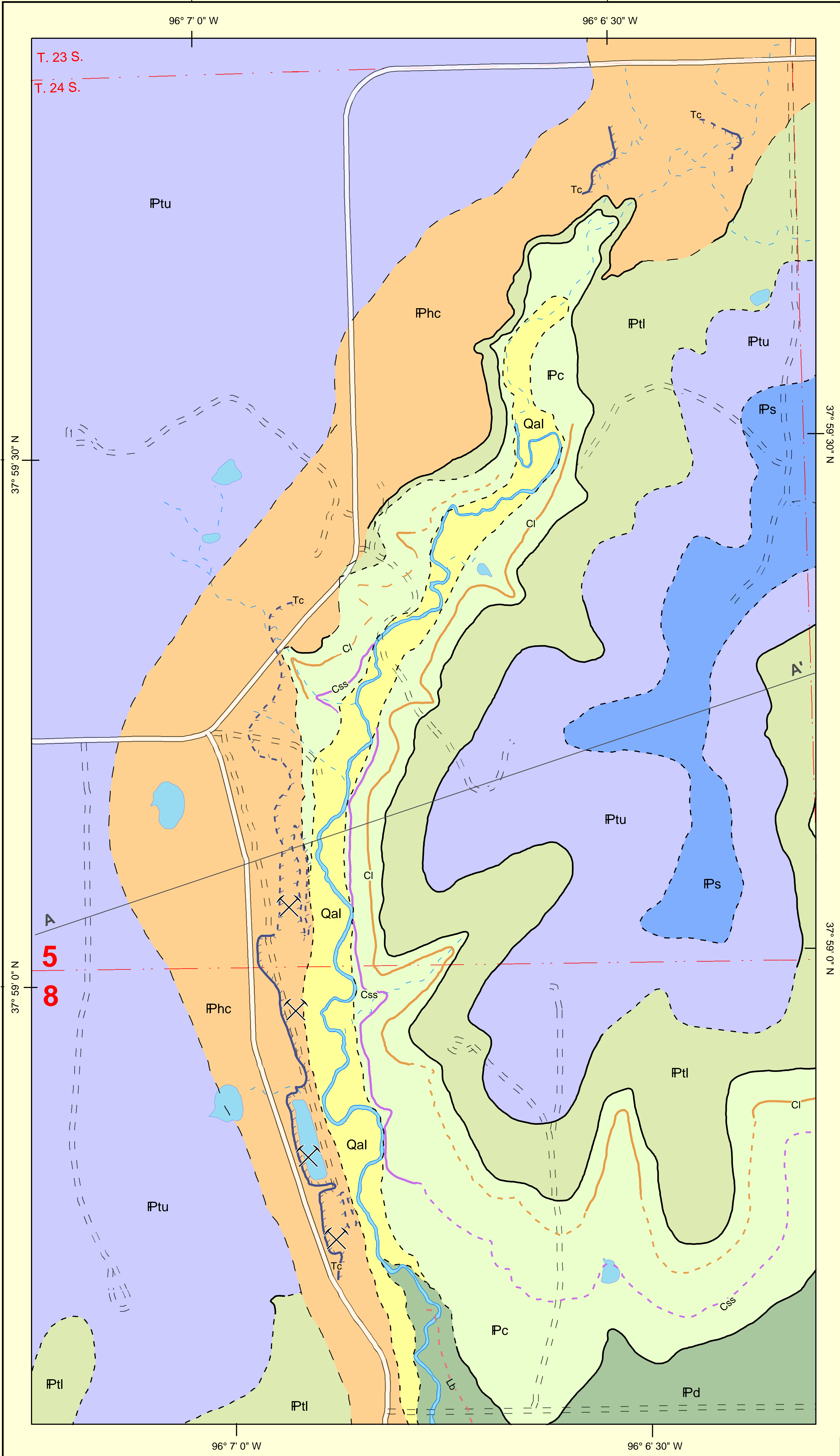


SURFICIAL GEOLOGY OF THE HAMILTON QUARRY AREA, GREENWOOD COUNTY, KANSAS

KGS Open File Report 2005-13

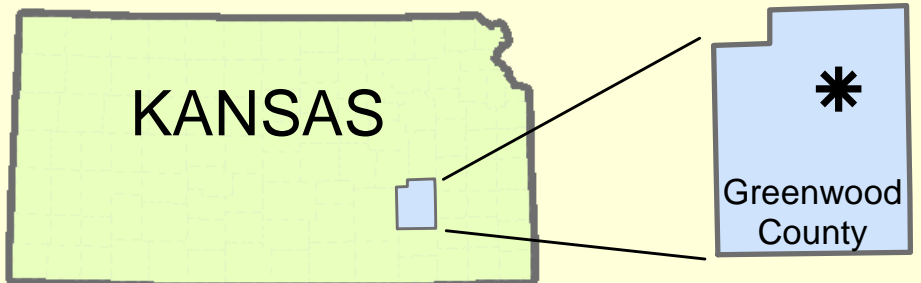
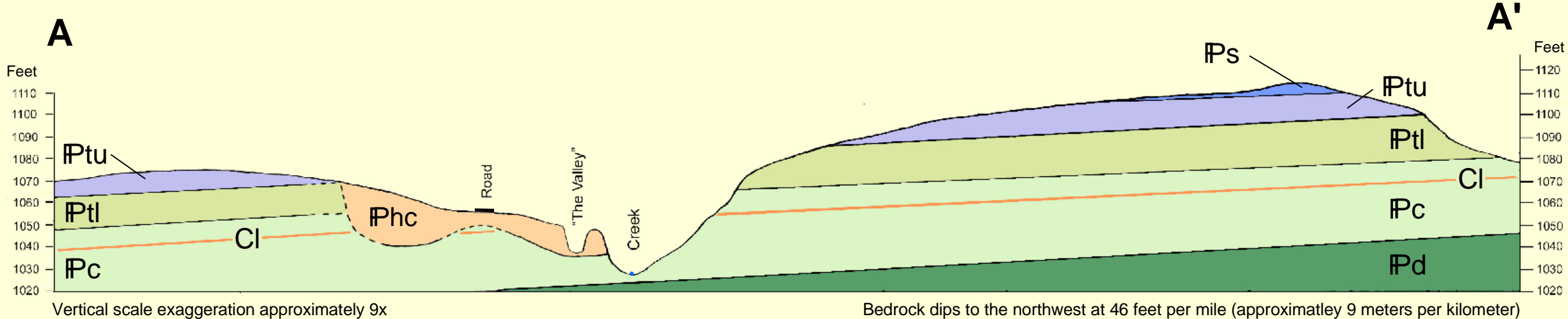
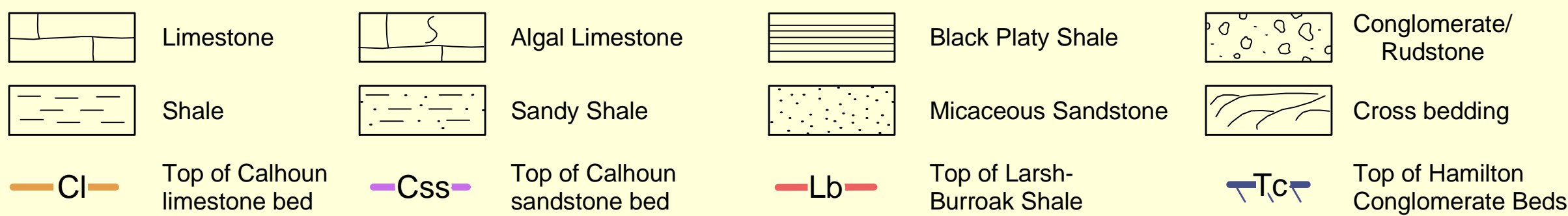


Mapped by
Shawn W. Salley
Emporia State University



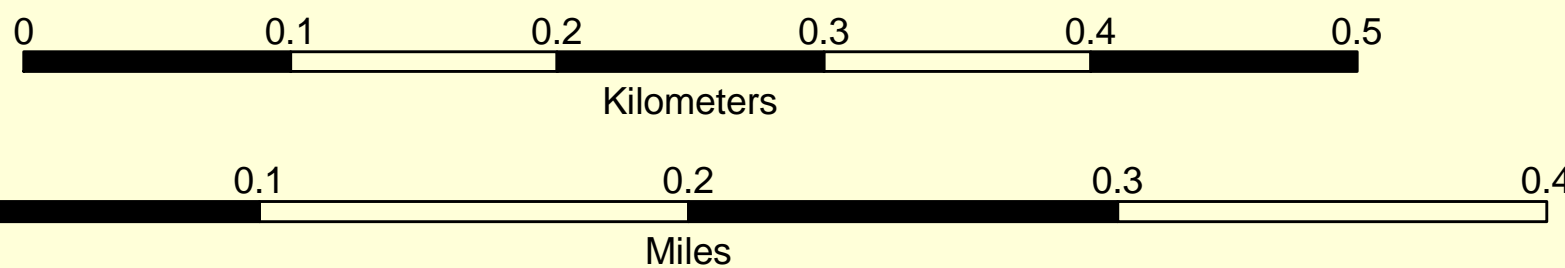
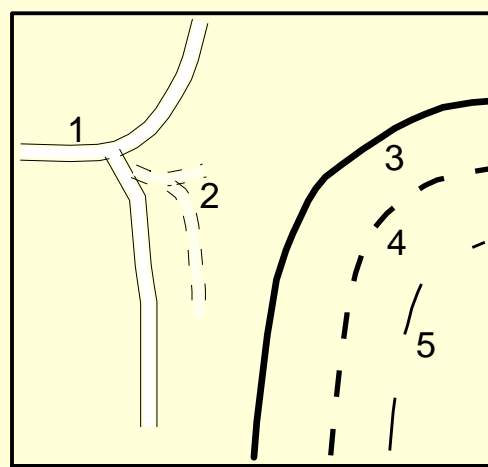
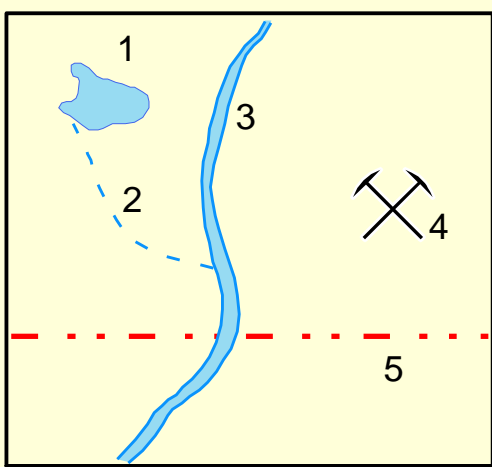
Composite Stratigraphic Section	Member	Formation	Group	Series	System	Meters
		Quaternary Alluvium				0
		Severy Shale				1
		undifferentiated Topeka				2
		Curzon Ls.				3
		Iowa Point Sh.				4
		Hartford Ls.				5
		sandy shale				6
		limestone				7
		brown shale				8
		sandstone				9
		blue shale				10
		Ervine Creek Ls.				11
		Larsh Burroak Sh				12

* Nomenclature follows Zeller (1968) except the upper Topeka and lower Topeka which are not recognized as formal divisions.



The geology was mapped in the field using the Virgil 7.5-min. 1:24,000-scale topographic map (1969), black and white aerial photography from 2002 USGS Virgil NW DOQQ, and field survey. Published material includes Kansas Department of Transportation Construction Materials Inventory (Myers, 1982), Geologic Map of Kansas, 1:500,000 (KGS, 1991), Geologic Map of Greenwood County, 1:50,000 (Merriam, 1999) Unpublished material includes an Ohio University master thesis (Fahrer, 1991) and an University of Kansas Ph. D. dissertation (Cunningham, 1993).

Resources were provided by the Kansas Geological Survey and Emporia State University



Universal Transverse Mercator Projection: Zone 14
North American Datum 1983

This map was produced using ArcMap 8.3, Environmental Systems Research Institute (ESRI).
Computer compilation and cartography by Shawn W. Salley