

BEDROCK ELEVATION AT SECTION CENTERS IN THE HIGH PLAINS AQUIFER

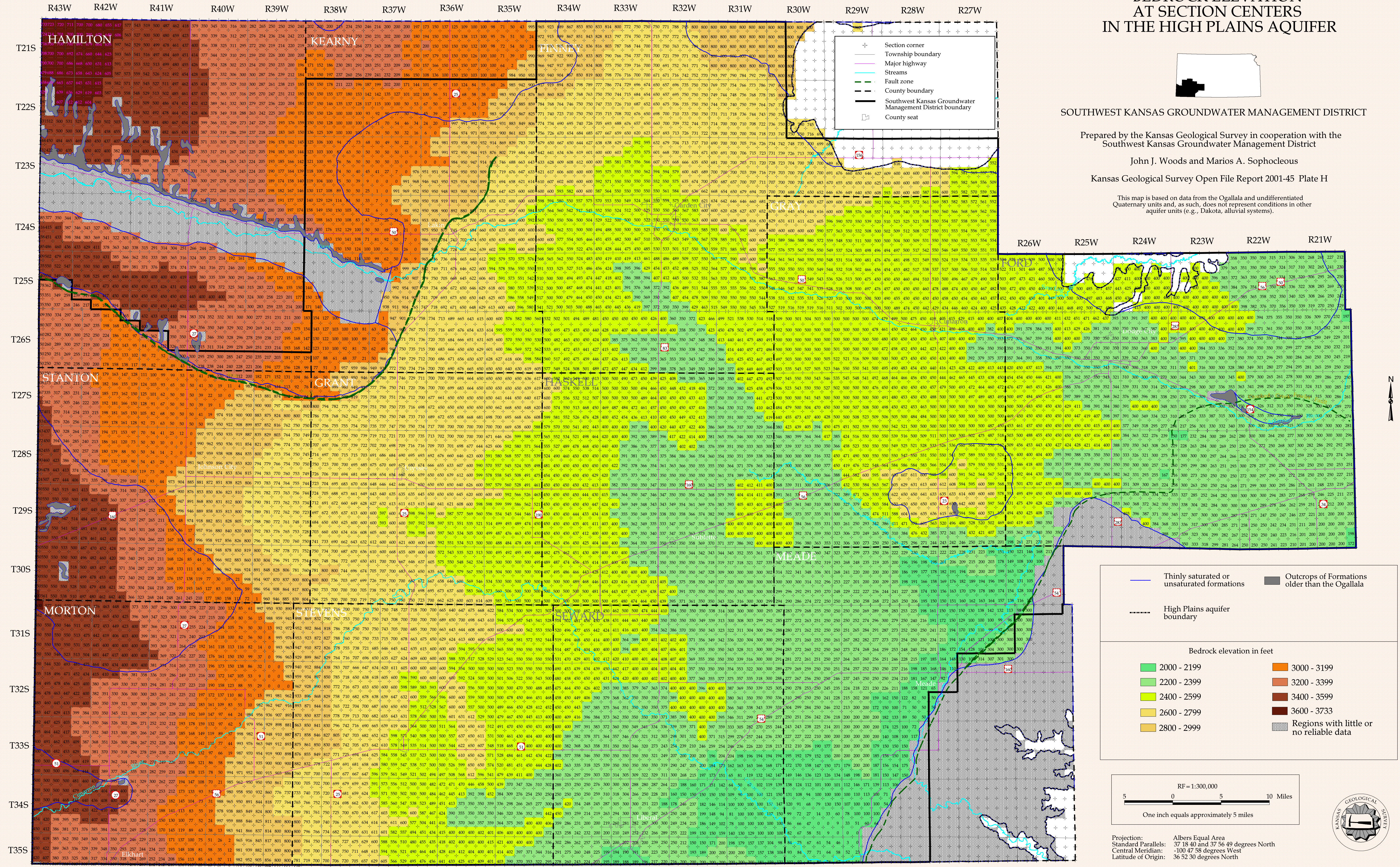
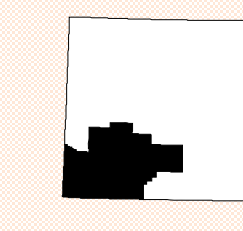
SOUTHWEST KANSAS GROUNDWATER MANAGEMENT DISTRICT

Prepared by the Kansas Geological Survey in cooperation with the Southwest Kansas Groundwater Management District

John J. Woods and Marios A. Sophocleous

Kansas Geological Survey Open File Report 2001-45 Plate H

This map is based on data from the Ogallala and undifferentiated Quaternary units and, as such, does not represent conditions in other aquifer units (e.g., Dakota, alluvial systems).



Thinly saturated or unsaturated formations

High Plains aquifer boundary

Outcrops of Formations older than the Ogallala

Bedrock elevation in feet

- 2000 - 2199
- 2200 - 2399
- 2400 - 2599
- 2600 - 2799
- 2800 - 2999
- 3000 - 3199
- 3200 - 3399
- 3400 - 3599
- 3600 - 3733
- Regions with little or no reliable data

RF = 1:300,000

5 0 5 10 Miles

One inch equals approximately 5 miles

Projection: Albers Equal Area
 Standard Parallels: 37 18 40 and 37 56 49 degrees North
 Central Meridian: -100 47 58 degrees West
 Latitude of Origin: 36 52 30 degrees North

The Kansas Geological Survey and the Southwest Kansas Groundwater Management District do not guarantee this map to be free from errors or inaccuracies and disclaim any responsibility or liability for interpretations from the map or decisions based thereon.

