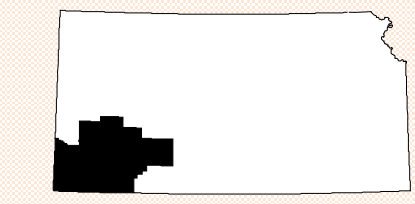


SATURATED THICKNESS AT SECTION CENTERS IN THE HIGH PLAINS AQUIFER PROJECTED 2025 DATA



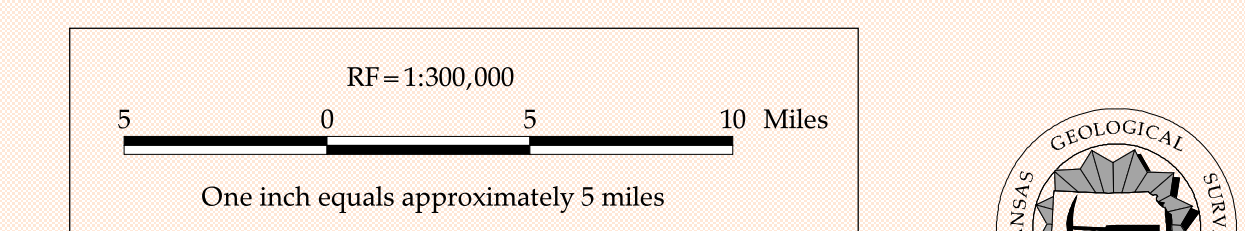
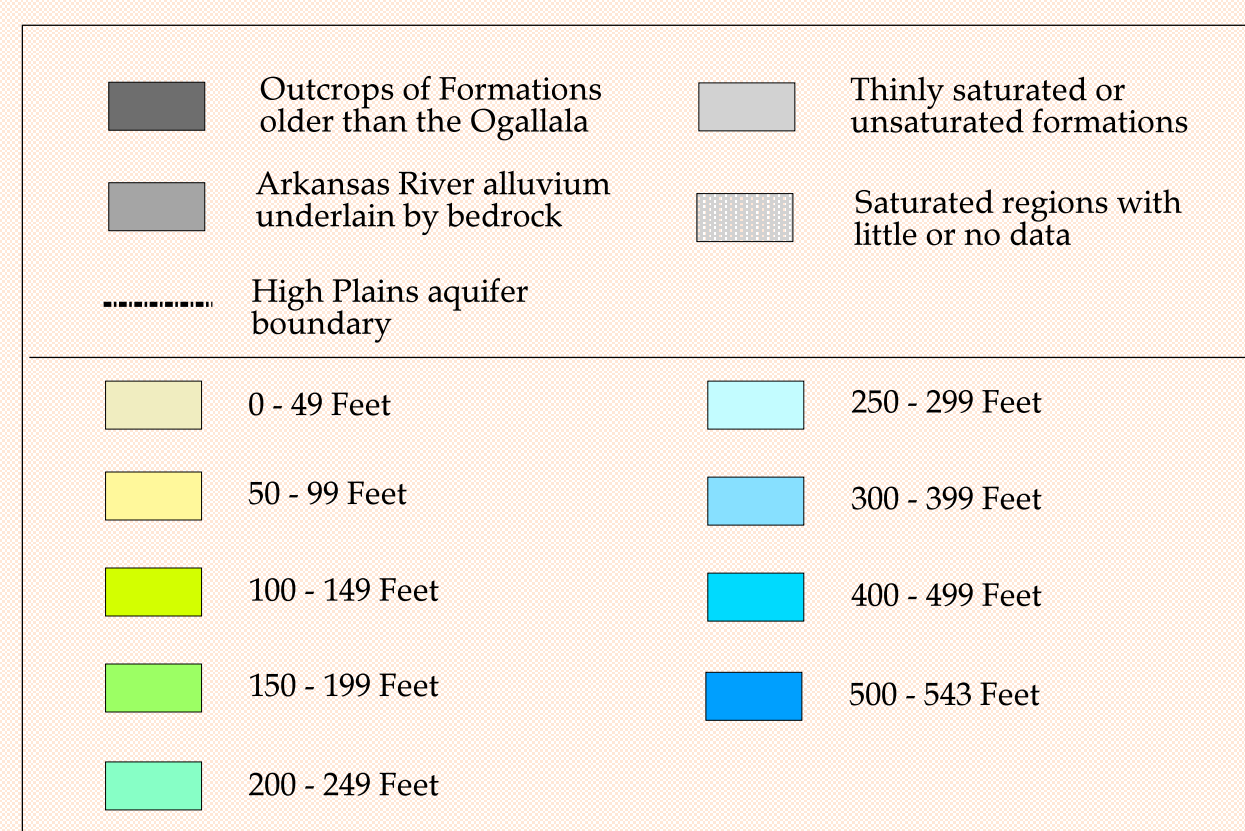
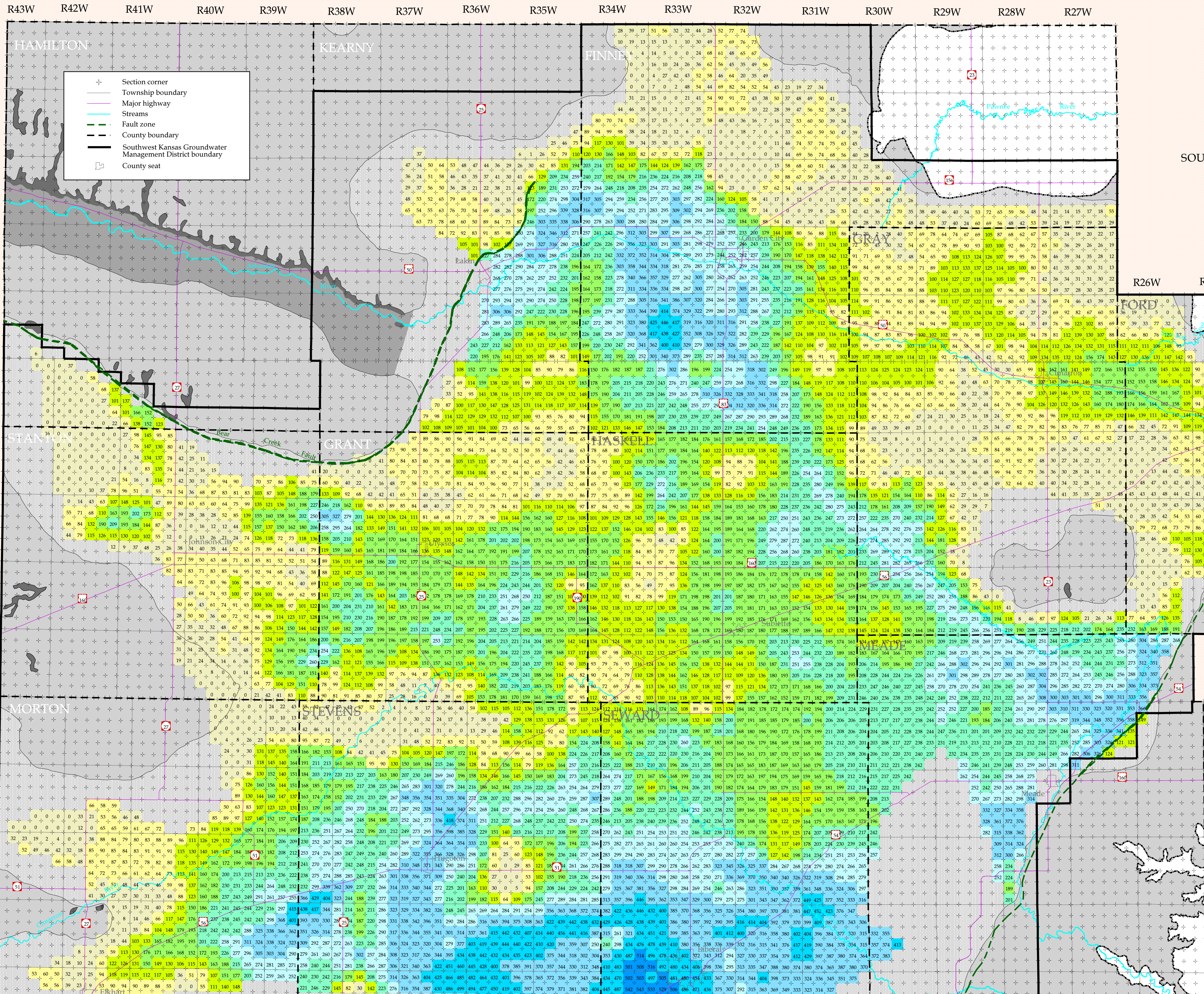
SOUTHWEST KANSAS GROUNDWATER MANAGEMENT DISTRICT

Prepared by the Kansas Geological Survey in cooperation with the Southwest Kansas Groundwater Management District

John J. Woods and Marios A. Sophocleous

Kansas Geological Survey Open File Report 2001-45 Plate F

This map is based on data from the Ogallala and undifferentiated aquifer units and, as such, does not represent conditions in other aquifer units (e.g., Dakota, alluvial systems).



The Kansas Geological Survey and the Southwest Kansas Groundwater Management District do not guarantee this map to be free from errors or inaccuracies and disclaim any responsibility or liability for interpretations from the map or decisions based thereon.