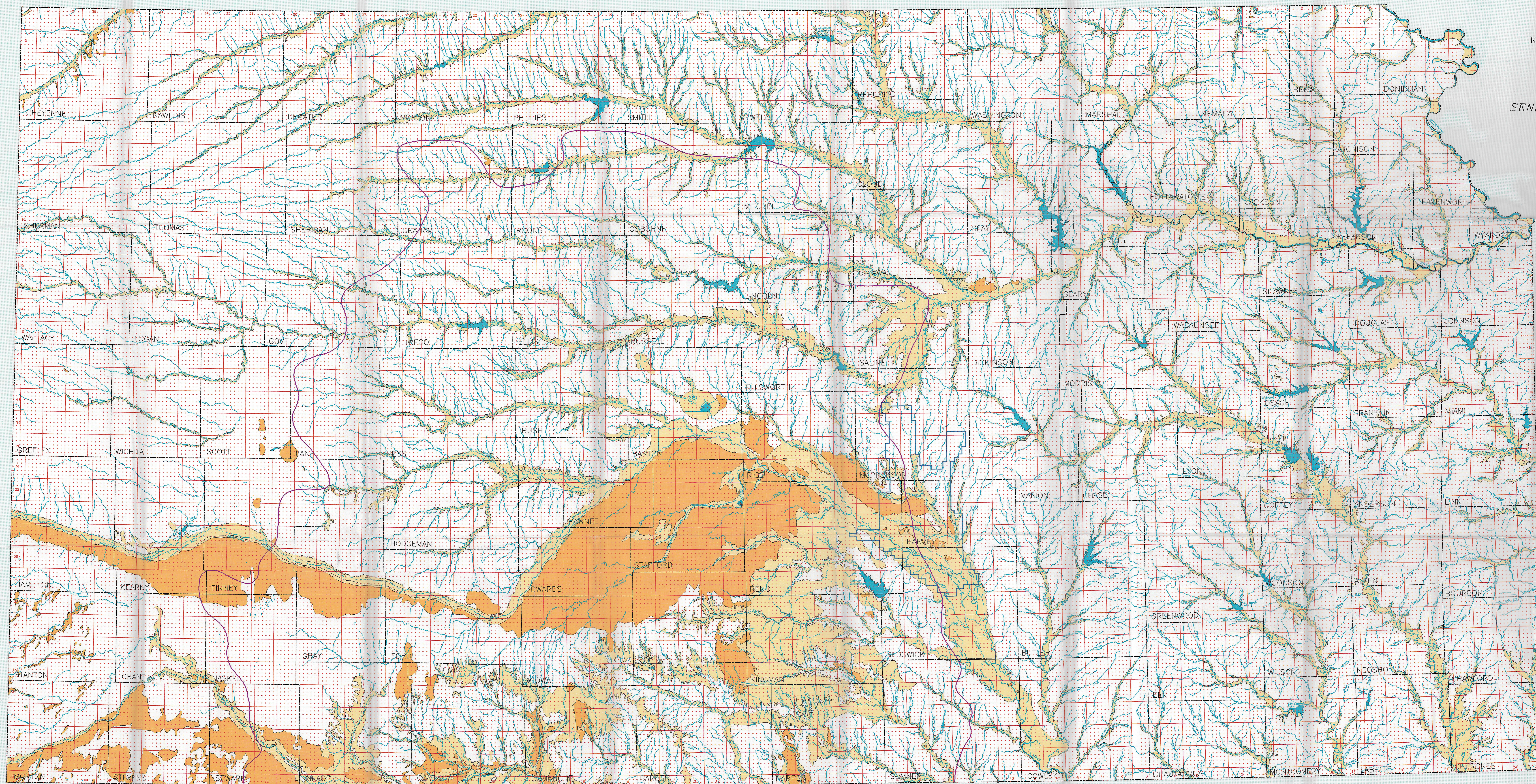


FIGURE 1
SENSITIVE GROUNDWATER AREAS
As referenced in K.A.R. 82-3-600 et seq.
1991



WAS PROVIDED BY THE KANSAS GEOLOGICAL SURVEY FOR THE KANSAS CORPORATION COMMISSION TO SUPPORT THE SENSITIVE GROUNDWATER AREAS REFERENCED IN TABLE B AS REFERENCED IN K.A.R. 82-3-600. THE GEOLOGIC BOUNDARIES INDICATED ON THIS MAP ARE CORRELATED WITH THE GEOLOGIC MAP OF KANSAS, M-23, 1991, PUBLISHED BY THE KANSAS GEOLOGICAL SURVEY.

- EXPLANATION
- QUATERNARY and TERTIARY Alluvium
 - QUATERNARY Dune Sand
 - Boundary for Groundwater Management District No. 2 (Equus Bed)
 - Approximate limit of the Hutchinson Soil Member (Cushman, 1956)

Prepared by
David R. Coles
Jorge A. Ross
KANSAS GEOLOGICAL SURVEY
UNIVERSITY OF KANSAS
Available on
KGS Open File Report 51-19

This map was produced with computer-assisted cartography using the Geologic Interactive Management Map Analysis and Production system (GIMAPS) by the Automated Cartography Laboratory at the Geological Survey of the Kansas Geological Survey. Map compiled by Jorge A. Ross.

The Kansas Geological Survey does not guarantee this map to be free from errors or misstatements and disclaims any responsibility for interpretations from the map or derivative based thereon.

Scale: 1:500,000
1 inch equals approximately 8 miles
0 10 20 Kilometers
0 10 20 Miles
Lambert Conformal Conic Projection
with standard parallels at 37° and 43°