

**MAJOR KANSAS AQUIFERS
WITH PRINCIPAL STREAMS**

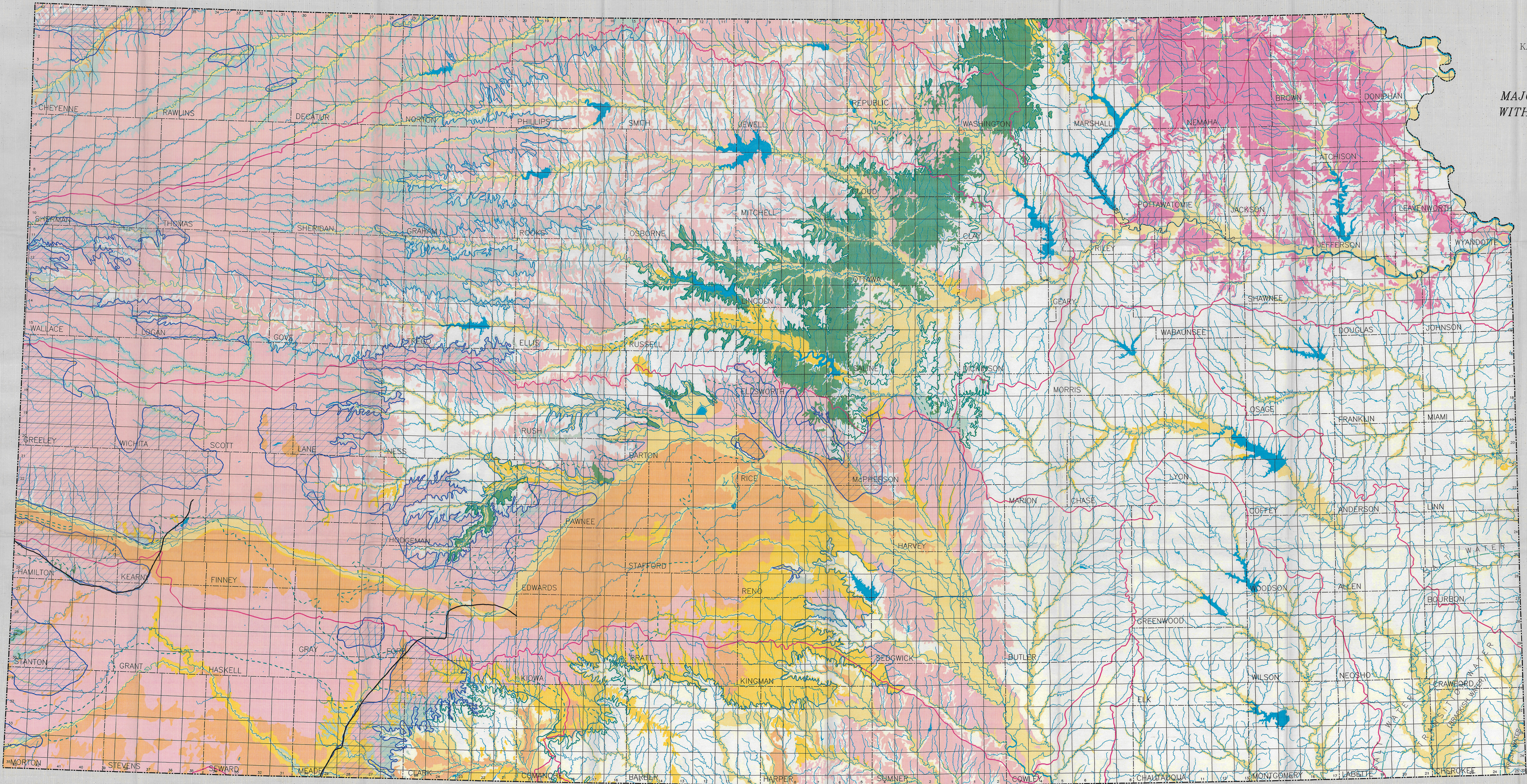
1990

PRELIMINARY

Authors

Thomas J. McClain

Robert Buddemeier



- EXPLANATION**
- PLEISTOCENE SERIES**
- Aluvium
Below floodplains and in stream terraces
 - Dune sand
 - Loess
Thin wedge locally in northern Kansas
and along some stream valleys elsewhere
 - Aluvium
Non-glacial in stream terraces and in
fillings of old valleys
 - Drift
Till, lacustrine and fluvial deposits
- PLIOCENE SERIES**
- Ogallala Formation
Lodgepole, Ogallala, Lawrence,
and Salina Formations
 - Dakota Formation
- Major Basins**
- Combra-Ogallala Aquifer
 - High Plains Aquifer
 - Non-contributing portion of aquifer
 - Dakota Aquifer

This map was produced with computer-aided cartography using the Geologic Information Management Map Analysis and Production System (GIMAPS) by the Automated Cartographic Laboratory of the Technical Information Services of the Kansas Geological Survey. Map compiled by Virginia A. Risk.

The Kansas Geological Survey does not guarantee this map to be free from errors or inaccuracies and disclaims any responsibility for interpretation from the map or decisions based thereon.

Scale 1:500,000
1 inch equals approximately 8 miles
0 10 20
Kilometers
0 10 20
Miles
Lambert Conformal Conic Projection
with standard parallels at 33° and 43°