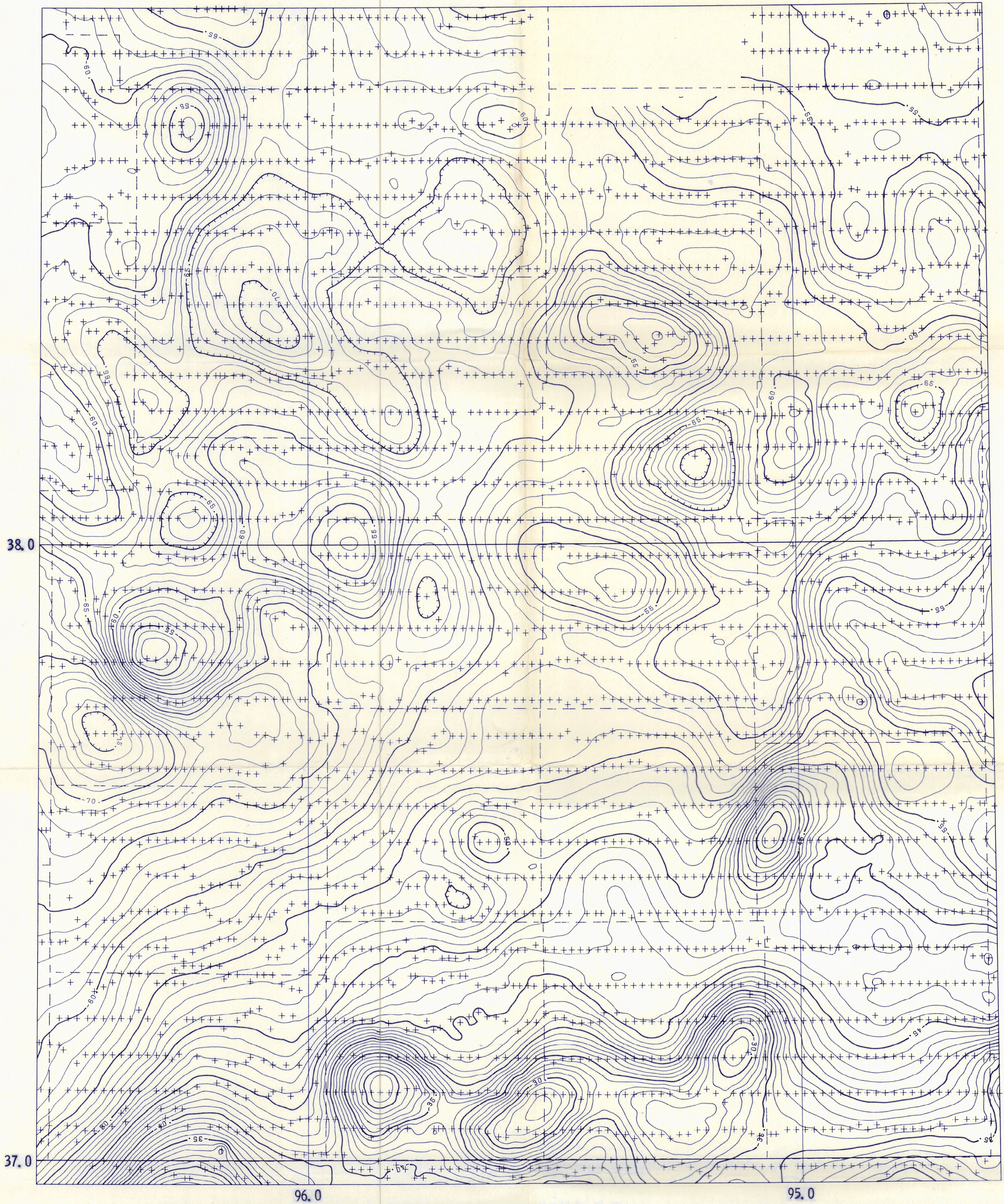


BOUGUER GRAVITY MAP OF SOUTHEASTERN KANSAS

H. YARGER, C. LAM, R. SOOBY, A. MARTIN, G. ROTHE, D. STEEPLES

EGS
OF
81-11



Further information and copies available from

Publications & Sales
Kansas Geological Survey
1930 Avenue "A", Campus West
Lawrence, Kansas 66044

Bouguer Gravity Field of the Earth in Milligals

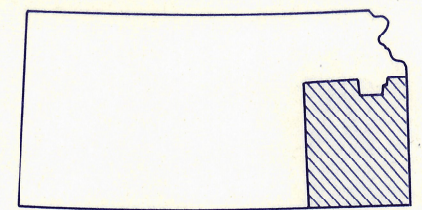
Contour Interval 1 Milligal

Lambert Conformal Conic Projection

Standard Parallels 33° and 45°

The absolute gravity field was referenced to the International Gravity Standardization Net 1971
The Bouguer gravity field was calculated using The Gravity Formula 1967 and a density of 2.67.

Supported principally by the Kansas Geological Survey.
Supported in part by the Department of Energy under Grant No. DE-AS07-19ET27204



Index Map

