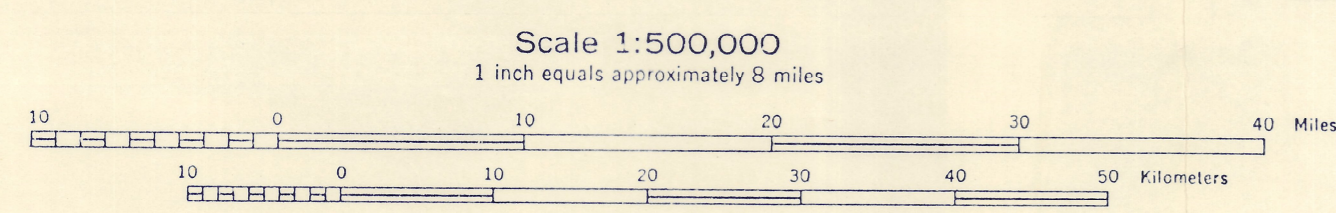
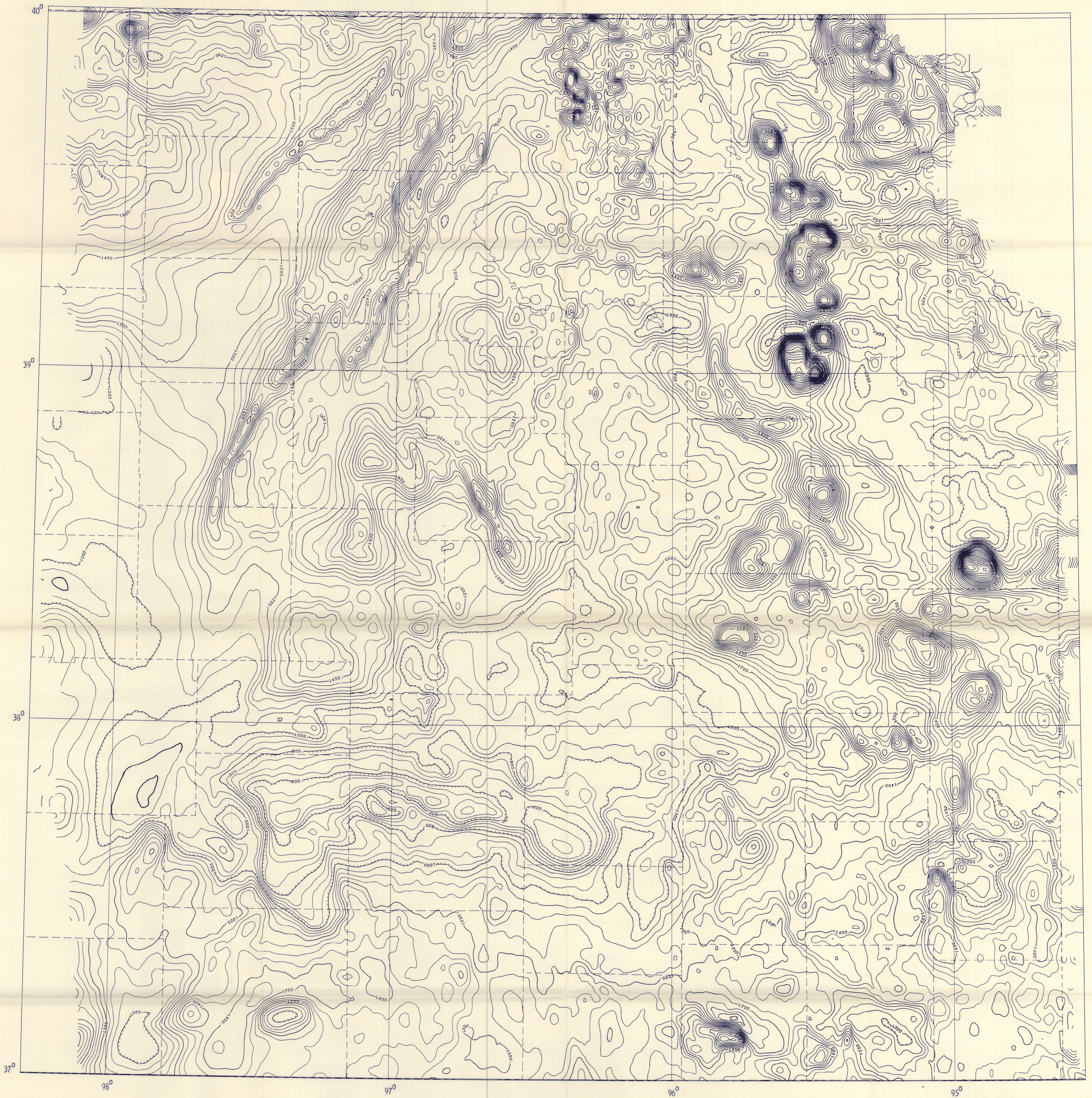


AEROMAGNETIC MAP OF EASTERN KANSAS

H. L. Yarger, R. R. Robertson and R. L. Wentland

OPEN FILE APRIL 17, 1978



Relative Total Intensity Magnetic Field of the Earth in Gammas

Contour Interval 50 Gammas

Scale 1:500,000

Lambert Conformal Conic Projection

Standard Parallels 33° and 45°

Relative Total Intensity = Absolute total intensity - IGRF + 1500 Gammas

Flown during 1975 and 1976 elevation of 2500 feet above sea level.

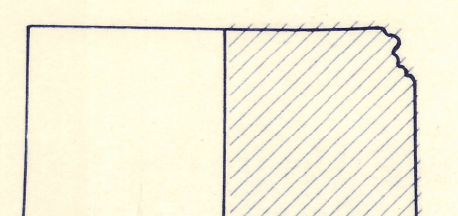
Flight lines flown east-west with two mile spacing.

Tie lines flown north-south with twenty mile spacing.

Supported principally by the Kansas Geological Survey. Supported, in part, by Special Appropriation from the Kansas Legislature for an Automated Resource Evaluation System, by the U. S. Geological Survey, Department of the Interior, under U. S. G. S. Grant No. 14-08-0001-G-137 and by the U. S. Nuclear Regulatory Commission under Contract No. AT(49-24)-0256.

Further information and/or copies available (\$5.00 per copy) from

Publication & Sales
Kansas Geological Survey
1930 Avenue "A", Campus West
Lawrence, Kansas 66044



Index Map