





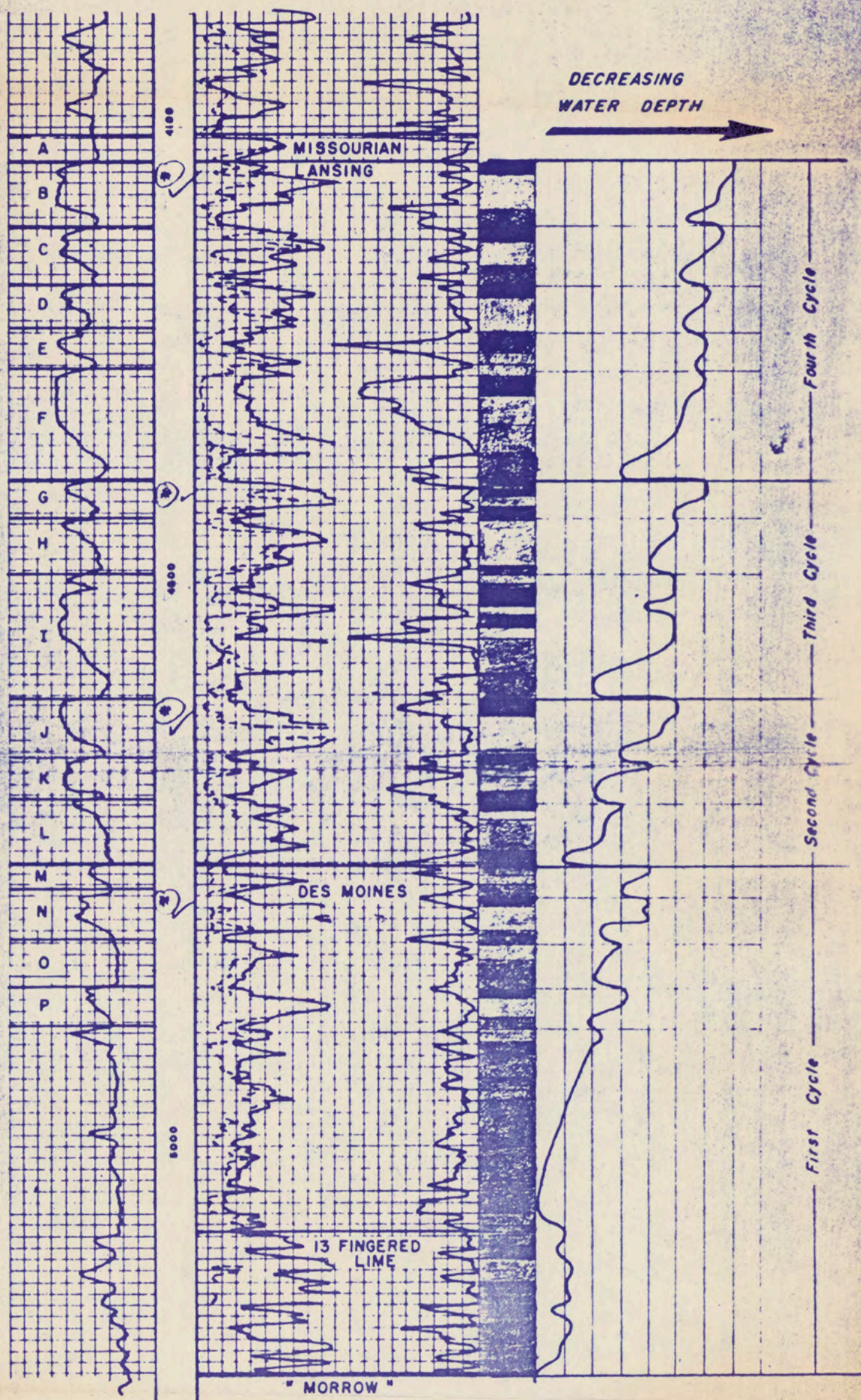


SCHEMATIC ILLUSTRATION RELATING WATER DEPTH AND CYCLIC NATURE OF DEPOSITION IN TYPICAL LANSING - KANSAS CITY SECTION OF SW KANSAS.

PAN AMERICAN #1 Black "C"
 SW NE 17-30S - 33W
 Haskell Co. Kansas

-  Calcarenite, high energy deposition
-  } shallow, quite water deposition
-  } Micrite
-  } deep, quite water deposition
-  Dolomite
-  Shale



* Zones which are discussed in this report.

EXHIBIT 1 OF 14

SCHEMATIC ILLUSTRATION RELATING WATER DEPTH AND CYCLIC NATURE OF DEPOSITION IN TYPICAL LANSING-KANSAS CITY SECTION OF SW KANSAS

EXAMINATION OF PENNSYLVANIAN CARBONATE BANKS IN SOUTHWESTERN KANSAS

BY
 HAROLD A. BROWN






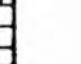
GEOLOGICAL REPORT NO. 13-A
 PAN AMERICAN PETROLEUM CORPORATION
 CENTRAL DIVISION

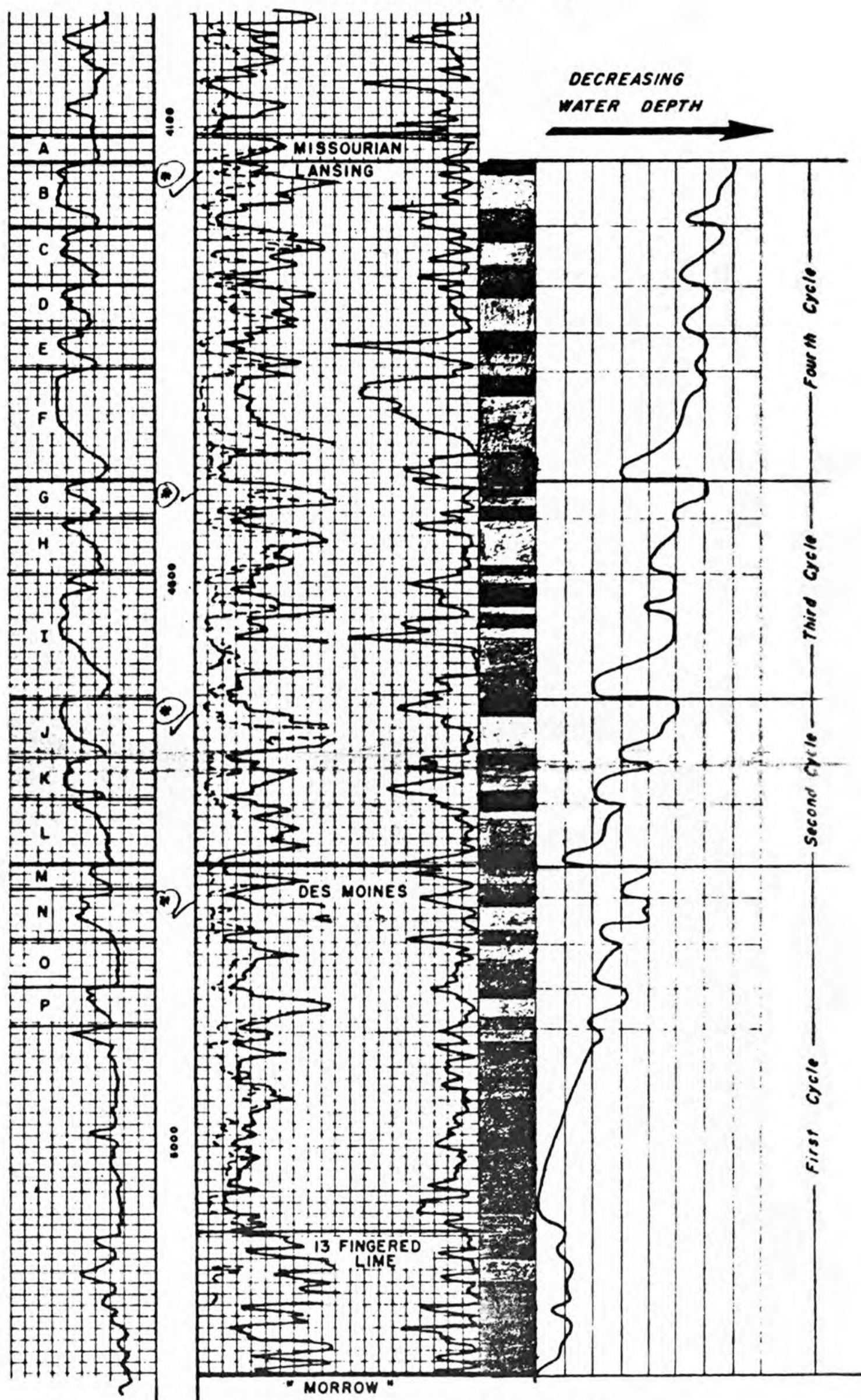
GEOLOGICAL CONSULTING GROUP
 APRIL 1963

KGS Open-file Report 63-5

SCHEMATIC ILLUSTRATION RELATING WATER DEPTH AND CYCLIC NATURE OF DEPOSITION IN TYPICAL LANSING - KANSAS CITY SECTION OF SW KANSAS

PAN AMERICAN #1 Black "C"
SW NE 17-30S - 33W
Haskell Co. Kansas

-  Calcarenites, high energy deposition
-  } shallow, quite water deposition
-  } Micrite
-  } deep, quite water deposition
-  Dolomite
-  Shale



* Zones which are discussed in this report.

EXHIBIT 1 OF 14

SCHEMATIC ILLUSTRATION RELATING WATER DEPTH AND CYCLIC NATURE OF DEPOSITION IN TYPICAL LANSING-KANSAS CITY SECTION OF SW KANSAS

EXAMINATION OF PENNSYLVANIAN CARBONATE BANKS IN SOUTHWESTERN KANSAS

BY
HAROLD A. BROWN

GEOLOGICAL REPORT NO. 13-A
PAN AMERICAN PETROLEUM CORPORATION
CENTRAL DIVISION

GEOLOGICAL CONSULTING GROUP
APRIL 1963

KGS Open-file Report 63-5