

Record of Humboldt Well No. 1, Allen County.

PLATE XXIII.

Located on Sec. 8, T. 26, R. 18. Reported by Guffey & Galey.

	MATERIAL.	Thickness of Strata.	Depth to Bottom of Strata.
1	Soil.....	22 feet.....	22 feet.
2	Gravel and Sand.....	8 ".....	30 "
3	Limestone.....	40 ".....	70 "
4	Black Slate Shale.....	25 ".....	95 "
5	Limestone.....	40 ".....	135 "
6	Slate Shale — Water.....	10 ".....	145 "
7	Limestone.....	30 ".....	175 "
8	Slate Shale and Shells.....	35 ".....	210 "
9	Shale — Water.....	8 ".....	218 "
10	Limestone.....	10 ".....	228 "
11	Slate Shale.....	3 ".....	231 "
12	Limestone.....	17 ".....	248 "
13	Slate Shale.....	5 ".....	253 "
14	Limestone.....	20 ".....	273 "
15	Slate Shale.....	172 ".....	445 "
16	Shells, broken.....	15 ".....	460 "
17	Limestone.....	10 ".....	470 "
18	Slate Shale.....	65 ".....	535 "
19	Limestone.....	40 ".....	575 "
20	Slate Shale.....	40 ".....	615 "
21	Limestone.....	20 ".....	635 "
22	Shale — Water.....	10 ".....	645 "
23	White Slate Shale.....	30 ".....	675 "
24	Black Slate Shale.....	70 ".....	745 "
25	White Slate Shale.....	15 ".....	760 "
26	Black Slate Shale.....	36 ".....	796 "
27	Sandstone.....	2 ".....	798 "
28	Black Slate Shale.....	96 ".....	894 "
29	Sandstone.....	5 ".....	899 "
30	Slate Shale.....	46 ".....	945 "
31	Sandstone — Salt water.....	25 ".....	970 "

Record of Well at La Harpe, Allen County.

PLATE XXIII.

Located on the S. E. corner of Sec. 18, T. 24 South, R. 20 East. Reported by L. C. Beattie, Manager of the Palmer Oil Company.

	MATERIAL.	Thickness of Strata.	Depth to Bottom of Strata.
1	Soil and Gravel.....	14 feet.....	14 feet.
2	Limestone.....	35 ".....	49 "
3	Slate and Soapstone Shales.....	25 ".....	74 "
4	White Limestone.....	10 ".....	84 "
5	Slate Shale.....	40 ".....	124 "
6	Gray Sandstone.....	15 ".....	139 "
7	Green Limestone.....	25 ".....	164 "
8	White Limestone.....	20 ".....	184 "
9	Black Limestone.....	10 ".....	194 "
10	Black Slate Shale.....	10 ".....	204 "
11	Red Flint.....	3 ".....	207 "
12	Slate Shale.....	8 ".....	215 "
13	Limestone and Red Flint.....	15 ".....	230 "
14	Black Slate Shale.....	5 ".....	235 "
15	Limestone.....	5 ".....	240 "
16	Slate Shale.....	5 ".....	245 "
17	Limestone, dark.....	10 ".....	255 "
18	Limestone, shelly.....	20 ".....	275 "
19	Brown Slate Shale.....	2 ".....	277 "
20	Gray Sandstone.....	20 ".....	297 "
21	Reddish Slate Shale.....	80 ".....	377 "
22	Gray Sandstone.....	18 ".....	395 "
23	Slate Shale.....	33 ".....	428 "
24	Black Limestone.....	16 ".....	444 "
25	Shelly Limestone.....	20 ".....	464 "
26	Dark Slate Shale.....	16 ".....	480 "
27	Gray Sandstone.....	25 ".....	505 "
28	Slate Shale.....	8 ".....	513 "
29	Sandstone.....	15 ".....	528 "
30	Slate Shale.....	15 ".....	543 "
31	Dark Slate.....	5 ".....	548 "
32	White Limestone, shelly.....	12 ".....	560 "
33	Dark Limestone and Red Flint.....	15 ".....	575 "
34	Slate Shale.....	5 ".....	580 "
35	Black Limestone, hard.....	8 ".....	588 "
36	Black Shale — trace of Gas.....	20 ".....	608 "
37	Limestone.....	8 ".....	618 "
38	Limestone, black — oily smell.....	4 ".....	620 "
39	Jet black Slate Shale.....	5 ".....	625 "
40	Dark Limestone.....	12 ".....	637 "
41	Gray Slate Shale.....	5 ".....	642 "
42	Gray Sandstone.....	8 ".....	650 "
43	Gray Slate Shale.....	8 ".....	658 "
44	Dark Slate Shale.....	6 ".....	664 "
45	Red Flint and Limestone.....	3 ".....	667 "
46	Black Shelly Sandstone.....	10 ".....	677 "
47	Dark Slate Shale.....	26 ".....	703 "
48	Slate Shale, changeable; light, dark, green, black.....	192 ".....	895 "
49	Sand Shales; some clear Sand.....	12 ".....	907 "
50	Black Slate Shale.....	61 ".....	968 "
51	Flint and Quartz.....	8 ".....	976 "

Figure 1.

HUMBOLDT WELL

Sec. 8, T. 26, R. 18.

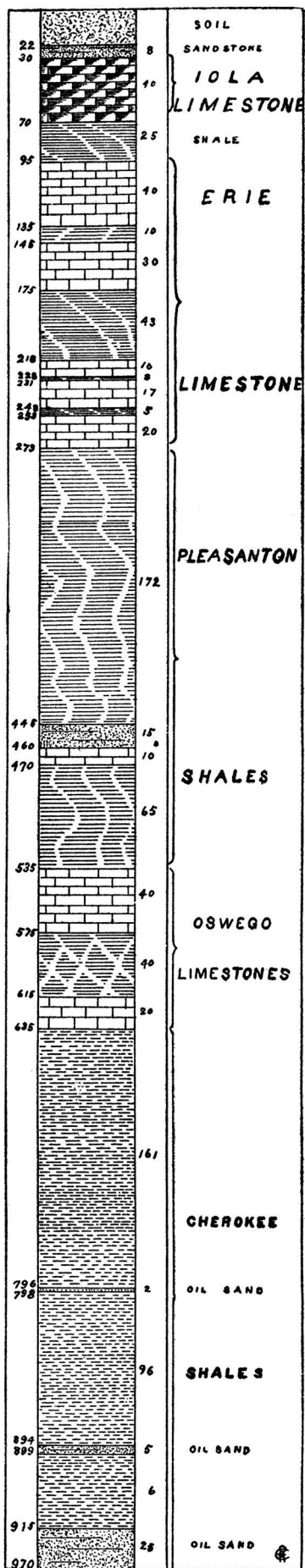


Figure 2.

LA HARPE WELL

Sec. 18, T. 24, R. 20. P.O. Co.

