

# THE PETROLEUM INDUSTRY IN KANSAS

Map by  
STATE GEOLOGICAL SURVEY, UNIVERSITY OF KANSAS

1948

STATE OF KANSAS  
Frank Carlson, Governor

STATE BOARD OF REGENTS  
Drew McLaughlin, Chairman  
Jerry E. Driscoll  
Fred M. Harris  
Willis N. Kelly

Map by  
Earl K. Nixon

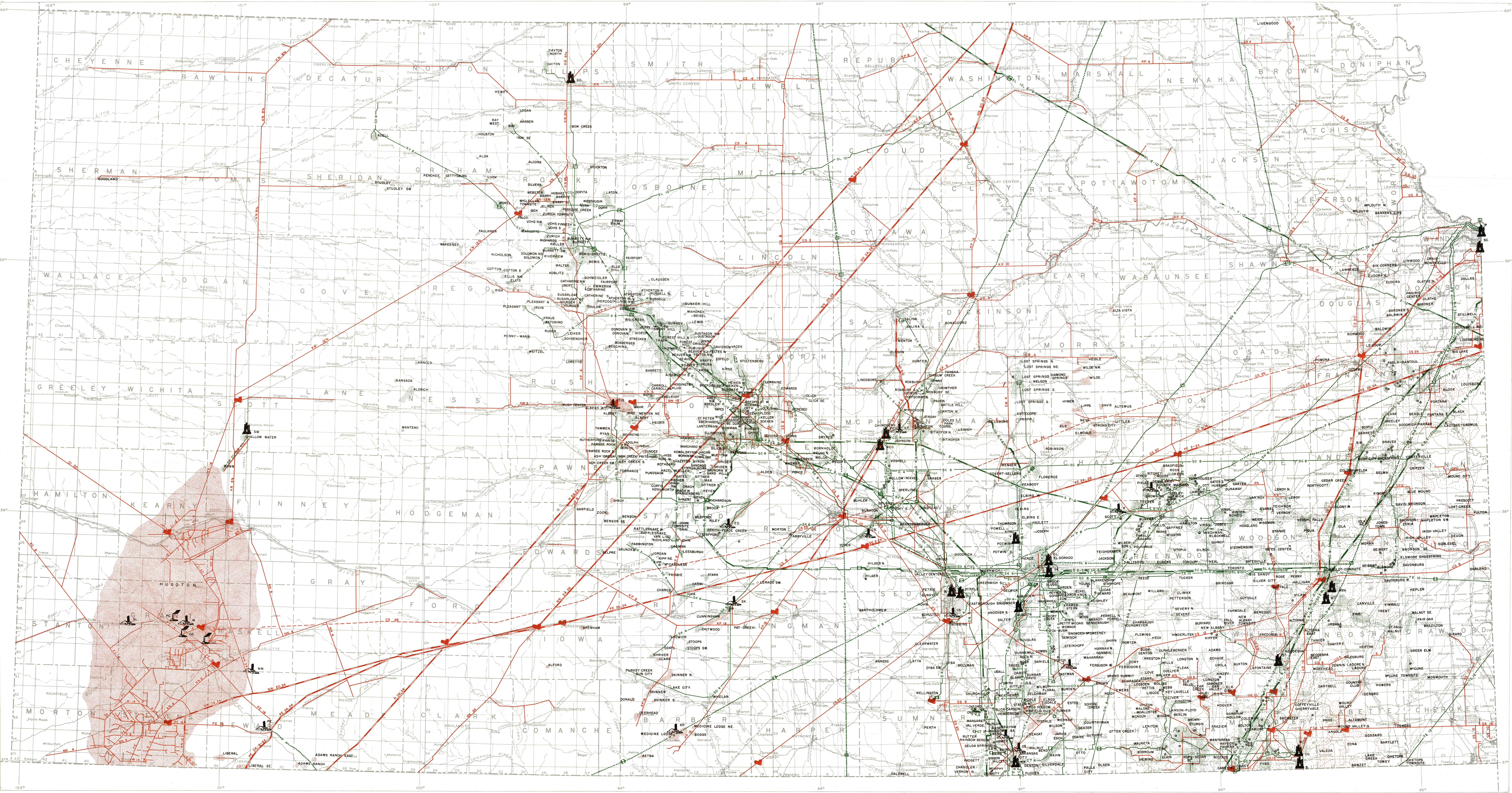
Drafting and Design—Bernice K. Mansfield  
Compilation—Virginia N. Perkins

UNIVERSITY OF KANSAS  
Dwight W. Malone, Chancellor

STATE GEOLOGICAL SURVEY  
R. C. Moore, State Geologist and Director of Research  
John C. Frye, Executive Director

MINERAL INDUSTRIES COUNCIL  
B. O. Weaver, Chairman  
Lester McCay  
J. E. Misamer  
K. A. Spencer  
W. L. Stricker  
M. L. Breidenhal

Brian O'Brien, Vice-Chairman  
Howard Curry  
John L. Galloway  
John B. Allison  
O. W. Billzore  
Charles Cook



**Companies operating natural gasoline plants**

- BA — Barnsdall Oil Co.
- CS — Cities Service Oil Co.
- ED — Edwards Gasoline Co.
- F — Fynn Oil Co.
- FP — The Kansas Power and Light Co.
- M — Magnolia Petroleum Co.
- NN — Northern Natural Gas Co.
- PE — Panhandle Eastern Pipe Line Co.
- SK — Skelly Oil Co.
- SL — Stanolind Oil and Gas Co.
- T — The Texas Co.

**Companies operating carbon black plants**

- CC — Columbian Carbon Co.
- PC — Peerless Carbon Black Co.
- UC — United Carbon Co.

**Companies operating gas pipe lines**

- CW — Central West Utility Co.
- CS — Cities Service Gas Co.
- CI — Colorado Interstate Gas Co.
- CPC — The Commercial Gas Pipeline Co.
- DC — The Drillers Gas Co.
- KN — Kansas Colorado Utilities, Inc.
- KN — Kansas-Nebraska Natural Gas Co., Inc.
- KN — The Kansas Power and Light Co., Inc.
- N — Natural Gas Pipeline Co. of America
- NN — Northern Natural Gas Co.
- PE — Panhandle Eastern Pipe Line Co.
- R — Republic Natural Gas Co.
- U — Union Gas System, Inc.
- UP — United Producing Co.

**EXPLANATION**

Base by U. S. Geological Survey

- Oil refinery
- Gasoline plant
- Carbon black plant
- Secondary recovery operation
- Products line
- Oil line
- Gas line
- Oil pump station
- Gas line compressor
- Oil-producing area
- Gas producing area
- Depleted oil and gas area
- Depleted oil area
- Depleted gas area

**Companies operating oil pipe lines**

- B — Borco Oil Co.
- BY — Bay Petroleum Corp.
- BM — Beaumont Oil Co.
- CH — Champion Refining Co.
- CH — Continental Pipe Line Co.
- CA — Cooperative Refinery Assn.
- CP — Crude Oil Pipeline Co.
- CT — Crude Transp., Inc.
- D — The Derby Oil Co.
- E — Empire Pipeline Co.
- GL — Great Lakes Pipe Line Co.
- G — Gulf Refining Co.
- K — Kow Pipe Line Co.
- NCO — The National Cooperative Refinery Assn.
- P — Phillips Petroleum Co.
- SW — The Shallow Water Refining Co.
- S — Shell Pipe Line Corp.
- SC — Sinclair Refining Co.
- SK — Skelly Oil Co.
- SV — Soco-Vacuum Oil Co., Inc.
- SO — Sohio Petroleum Co.
- SH — Standish Pipe Line Co. (Phillips Petroleum Co.)
- MA — M. F. A. Oil Co.
- NCO — The National Cooperative Refinery Assn.
- SW — The Shallow Water Refining Co.
- SC — Sinclair Refining Co.
- SK — Skelly Oil Co.
- SV — Soco-Vacuum Oil Co., Inc.
- ST — Standolind Oil Co., Inc.
- V — The Vickers Petroleum Co., Inc.

1947 production of 4,000,000 barrels of petroleum valued at \$200,000,000; 118,000,000 cubic feet of gas valued at \$62,000,000; 98,000,000 gallons of natural gasoline, liquefied petroleum gases, and other products valued at \$287,000,000.