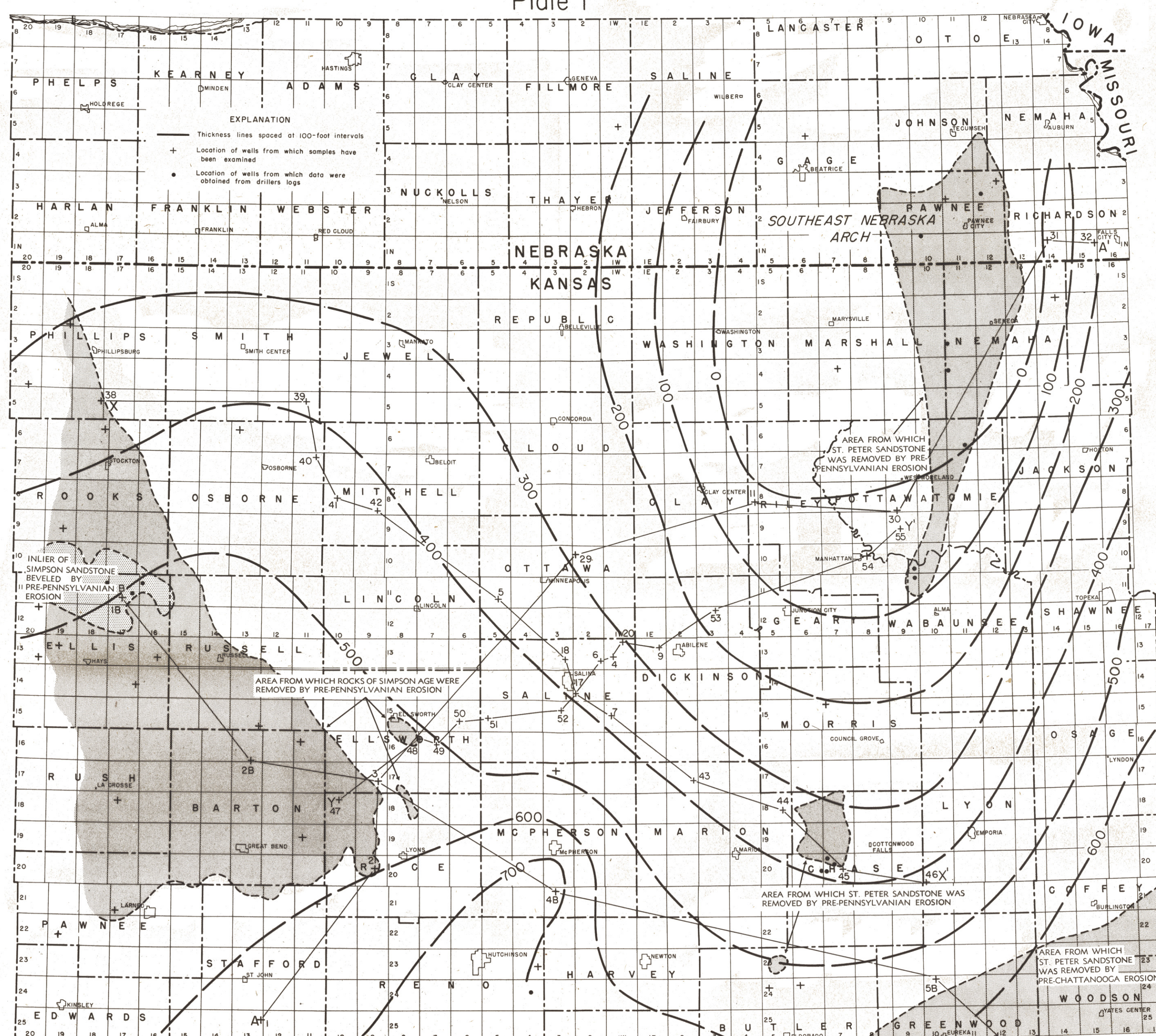
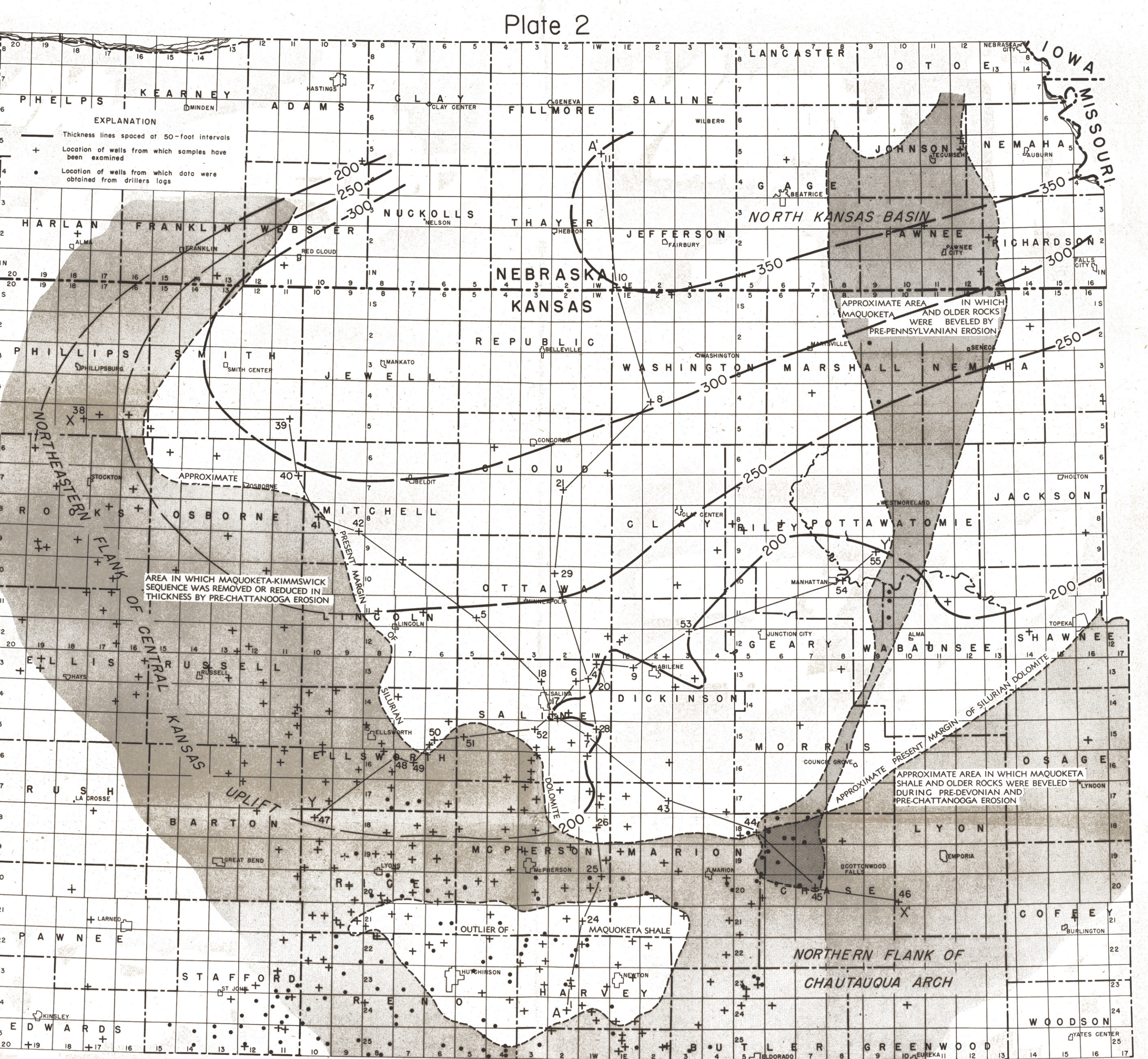
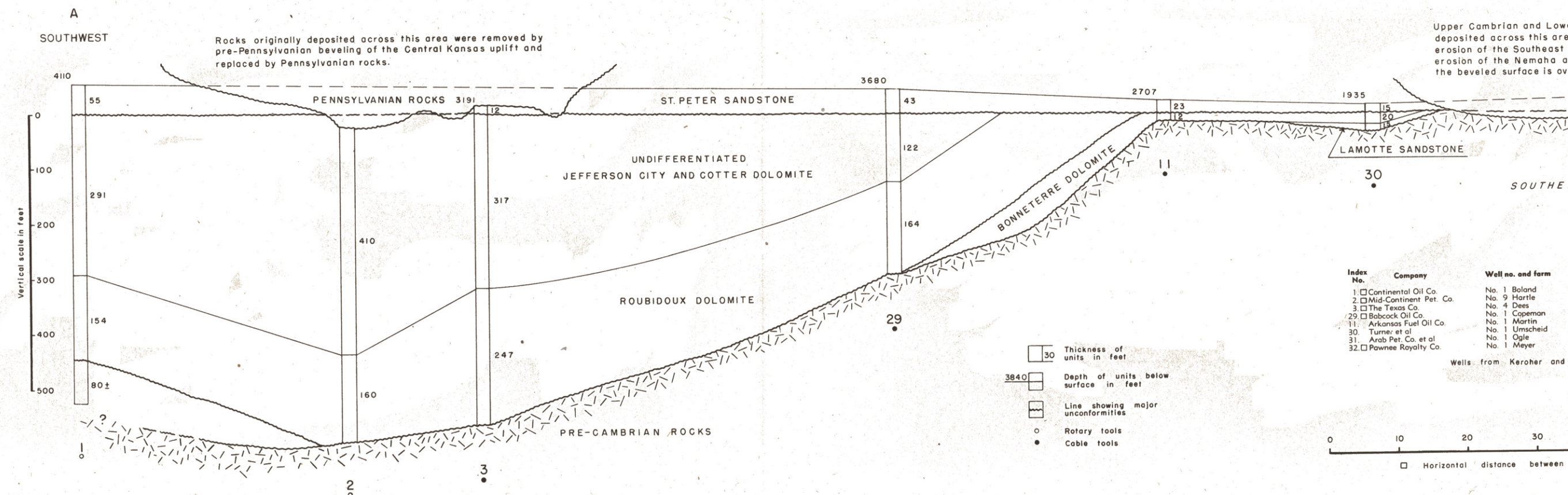


by Wallace Lee, Constance Leatherock and Theodore Botinelly  
Prepared cooperatively by the State Geological Survey of Kansas  
and the United States Geological Survey, 1948

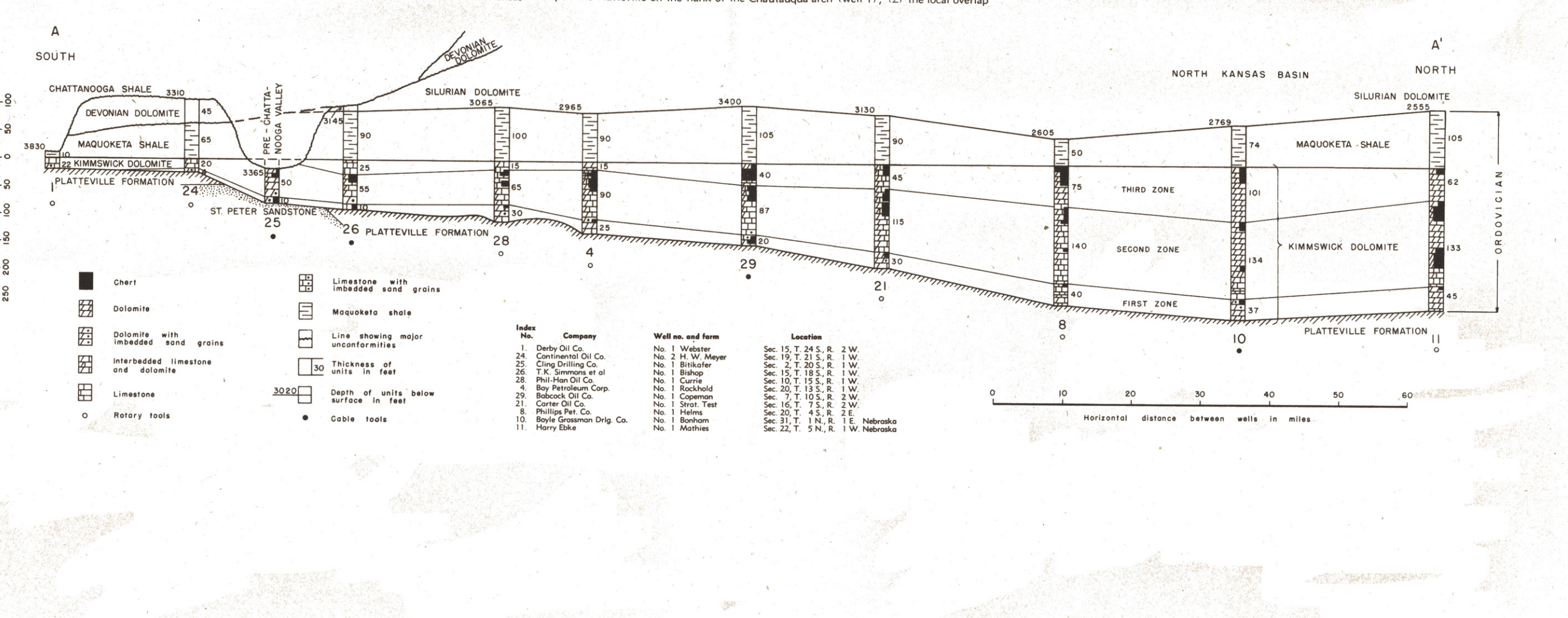
Plate 1



Map of the Salina basin area showing (a) the thickness of the pre-St. Peter sedimentary rocks and (b) a stratigraphic cross section along line A-A'. The map displays various geological features, including the Southeast Nebraska Arch, the North Kansas Basin, and the Northern Flank of the Chautauqua Arch. It includes county names, well locations, and thickness contours.

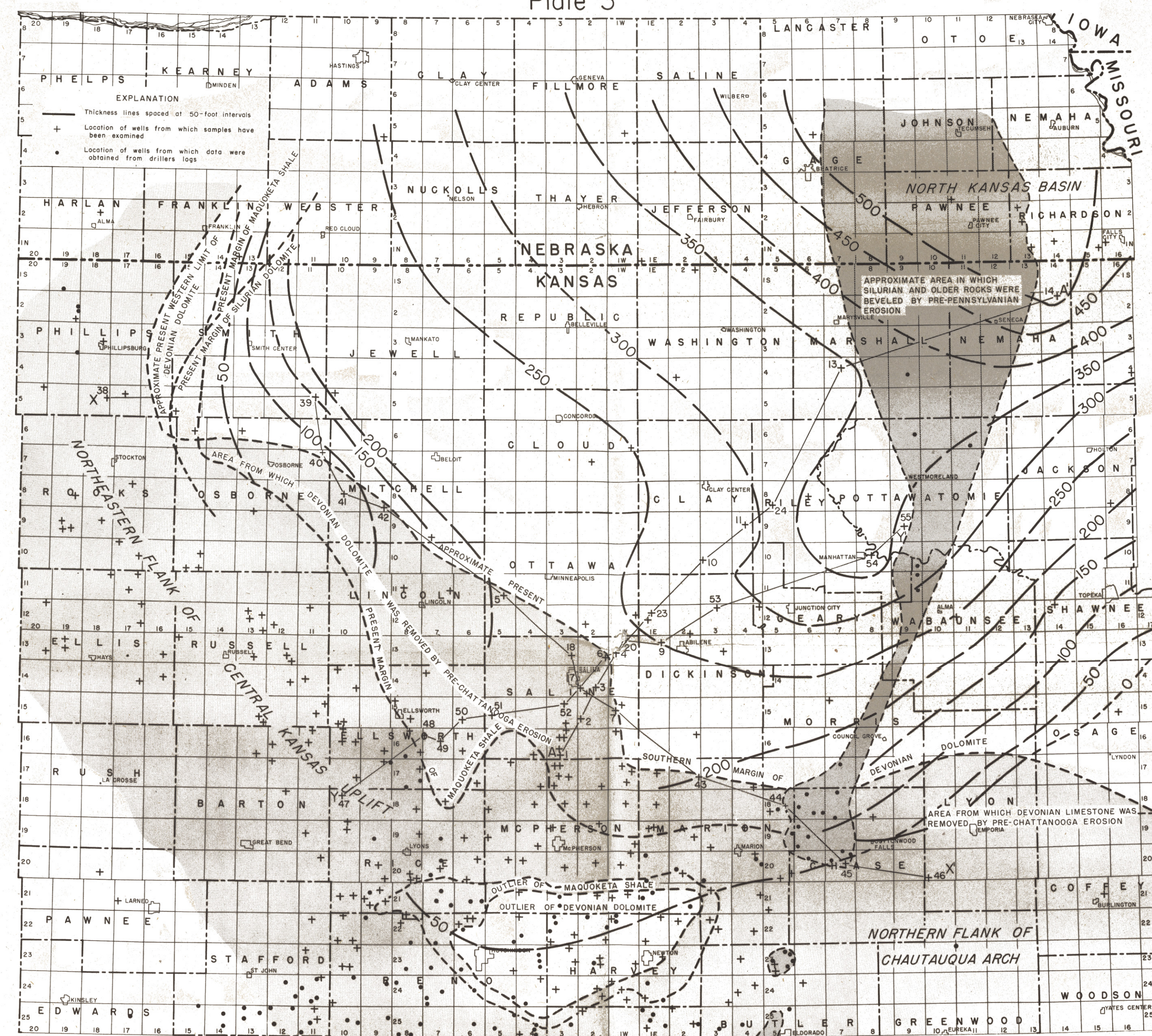


Map of the Salina basin area showing (a) the combined thickness of the Kimmswick and Maquoketa shales and (b) a stratigraphic cross section along line A-A'. The map displays various geological features, including the North Kansas Basin, the Northern Flank of the Chautauqua Arch, and the Northern Flank of the Chautauqua Arch. It includes county names, well locations, and thickness contours.

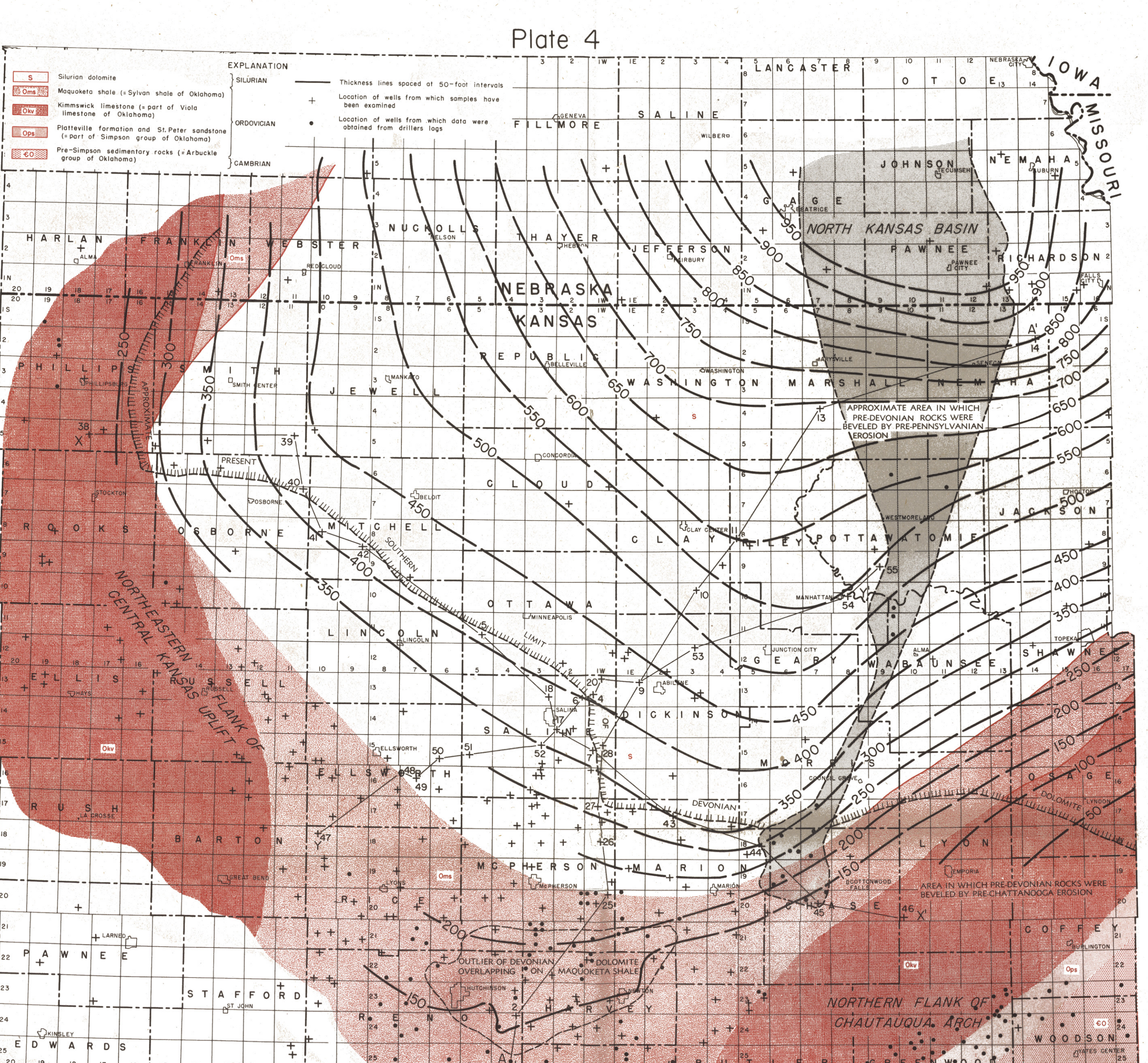
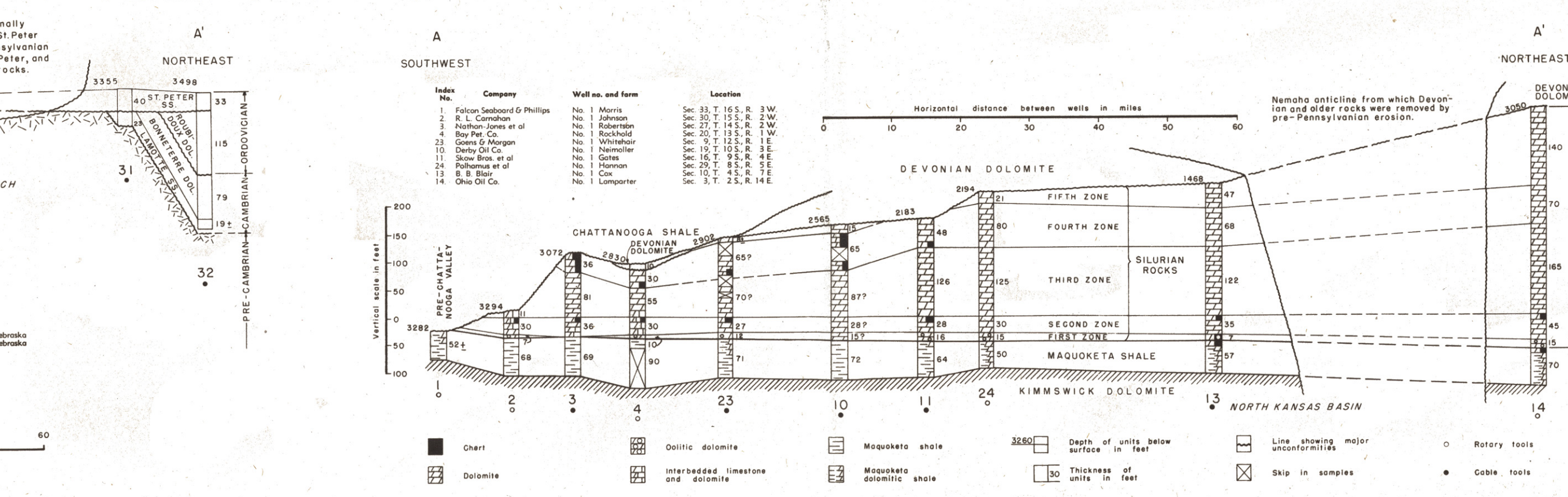


Map of the Salina basin area showing (a) the combined thickness of the Kimmswick and Maquoketa shales and (b) a stratigraphic cross section along line A-A'. The map displays various geological features, including the North Kansas Basin, the Northern Flank of the Chautauqua Arch, and the Northern Flank of the Chautauqua Arch. It includes county names, well locations, and thickness contours.

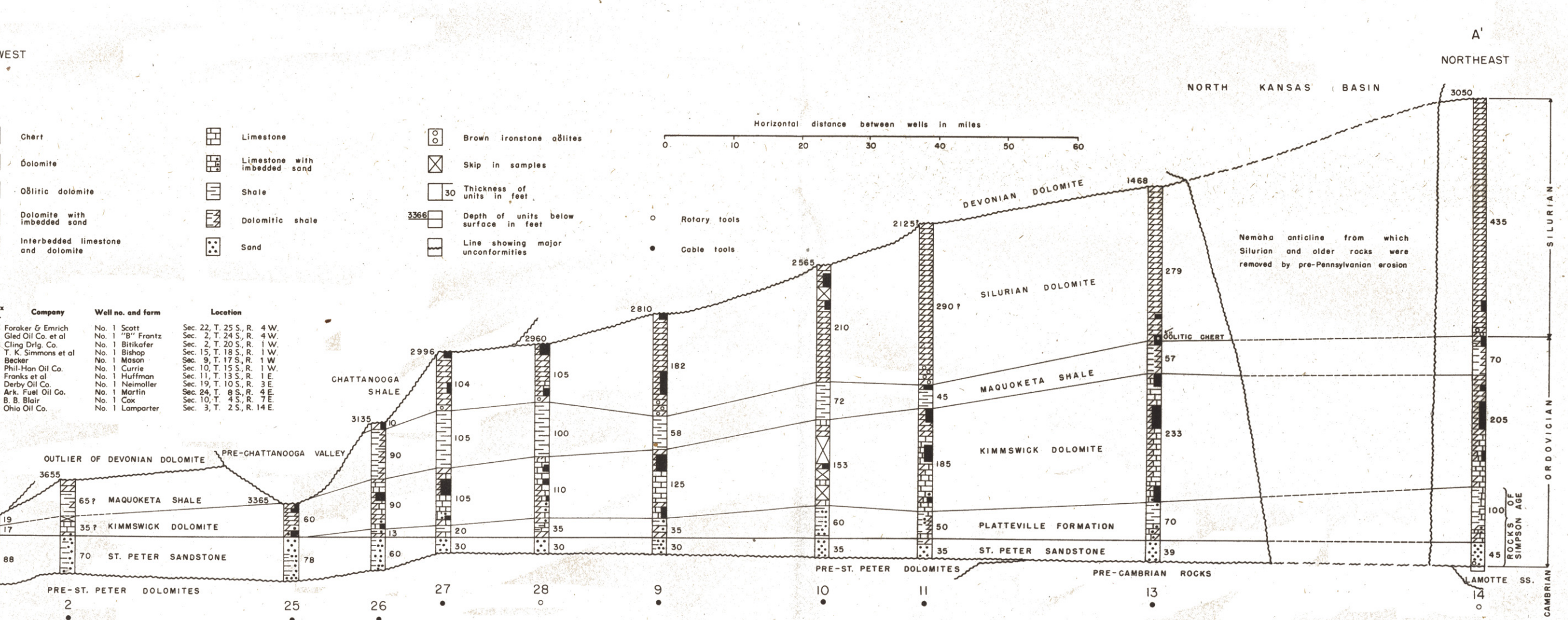
Plate 3



Map of the Salina basin area showing (a) the combined thickness of the Kimmswick and Maquoketa shales and (b) a stratigraphic cross section along line A-A'. The map displays various geological features, including the North Kansas Basin, the Northern Flank of the Chautauqua Arch, and the Northern Flank of the Chautauqua Arch. It includes county names, well locations, and thickness contours.



Map of the Salina basin area showing (a) the combined thickness of the Kimmswick and Maquoketa shales and (b) a stratigraphic cross section along line A-A'. The map displays various geological features, including the North Kansas Basin, the Northern Flank of the Chautauqua Arch, and the Northern Flank of the Chautauqua Arch. It includes county names, well locations, and thickness contours.



Map of the Salina basin area showing (a) the combined thickness of the Kimmswick and Maquoketa shales and (b) a stratigraphic cross section along line A-A'. The map displays various geological features, including the North Kansas Basin, the Northern Flank of the Chautauqua Arch, and the Northern Flank of the Chautauqua Arch. It includes county names, well locations, and thickness contours.