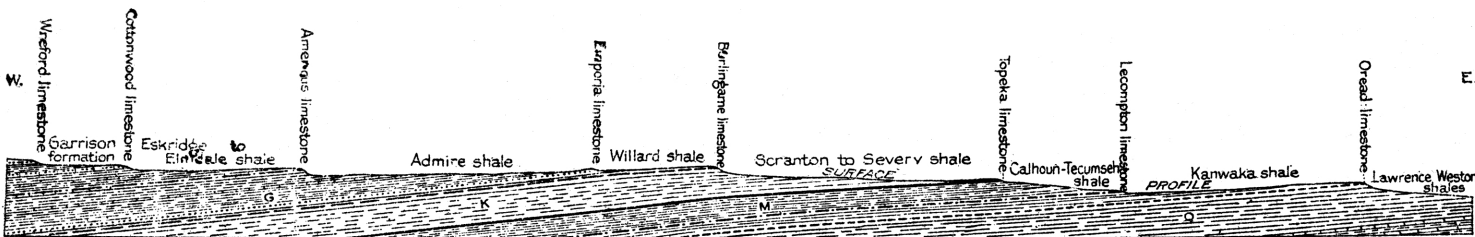




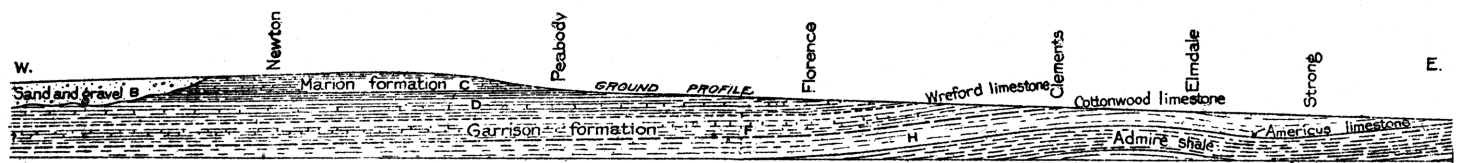
SECTION FROM KANSAS CITY THROUGH OLATHE AND BALDWIN ALONG LINE OF OLD SANTA FE TRAIL. [U.S.G.S. BL. 612]

C



SECTION SHOWING VERTICAL RELATIONS OF LIMESTONES AND SHALES ACROSS THE SOUTHERN PART OF THE AREA COVERED BY SHEET 2 [U.S.G.S. BULL. 612]. VERTICAL SCALE GREATLY EXAGGERATED (26 TIMES). THIS HAS EFFECT OF INCREASING APPARENT TILT OF BEDS

D



SECTION SHOWING UNDERGROUND RELATIONS OF ROCKS ALONG SANTA FE RAILWAY BETWEEN STRONG CITY AND HALSTEAD KANS. [U.S.G.S. BULL. 612]. 800 FEET ABOVE SEA LEVEL. VERTICAL SCALE GREATLY EXAGGERATED (26 TIMES). THIS HAS EFFECT OF INCREASING APPARENT TILT OF BEDS

E

PLATE XVI.

- C. Section from Kansas City through Olathe and Baldwin along the line of the old Santa Fe trail.
- D. Section from Pomona to point west of Emporia.
- E. Section from Strong City to Halstead.