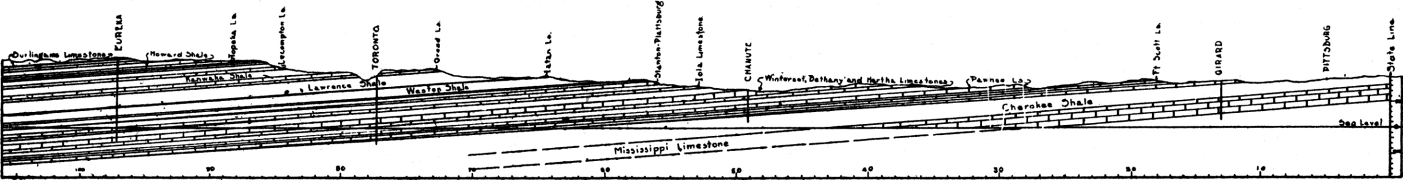


A

[U.S.G.S. Vol. IX]



B

PLATE XV.

A. Section showing underground relations of rocks from the state line east of Paola to a point ten miles west of Osage City.
 B. Section showing underground relations of rocks from the state line east of Fort Scott to Burlington.
 Vertical scale greatly exaggerated, which has the effect of increasing the apparent tilt of the beds.