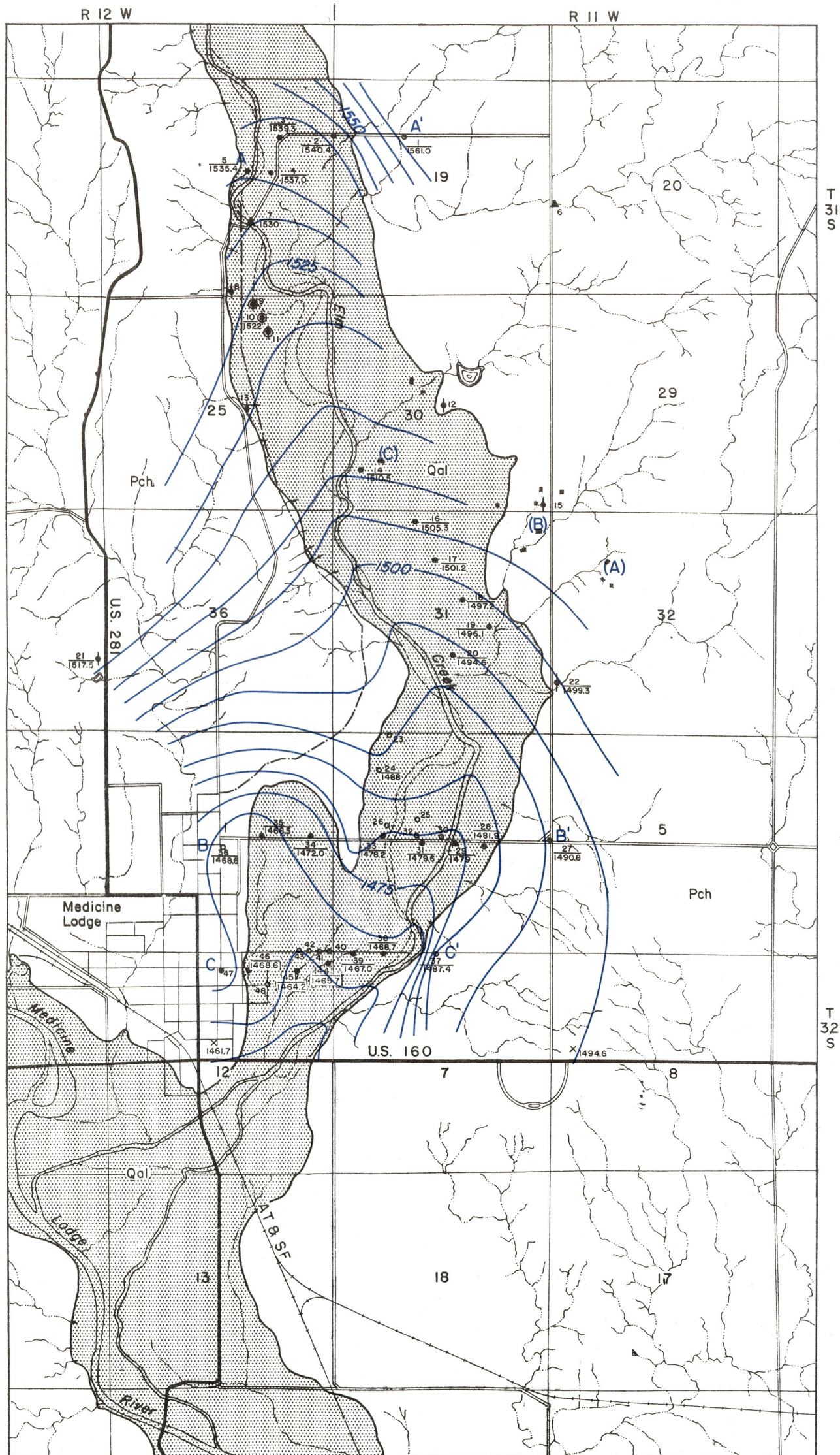


MAP OF A PORTION OF ELM CREEK VALLEY Showing Geology and Water-table Contours, 1945

By Charles C. Williams and
Charles K. Bayne

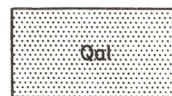
Bulletin 64, Part 3
Plate I

State Geological Survey
of Kansas



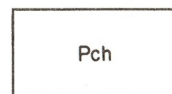
EXPLANATION

Quaternary



Alluvium

Permian



Cedar Hills sandstone
(Includes deposits of the Pleistocene
Gerlane formation locally, especially
in the northeastern and southeastern
parts of the area).

- Test hole
- Test hole, analysis of water sample
- ⬮ Domestic well, analysis of water sample
- ⊙ Public supply well, analysis of water sample
- ▲ Stream sampling station
- Oil field brine disposal pond
Letter indicates analysis
- × Altitude of water table only
- ⌋ Infiltration gallery

14
1510.5
Upper number is well or test
hole number used in tables.
Lower number is altitude of
water level.

1525 Water table contours based
on instrumental levels

- Federal or State highway
- == Graded road
- Section line (no road)
- Railroad
- Perennial stream
- Intermittent stream
- Water-supply pipeline

Base map prepared from large-scale
aerial photographs. (U.S. Department
of Agriculture photographs)

0 1 2
Scale, in miles