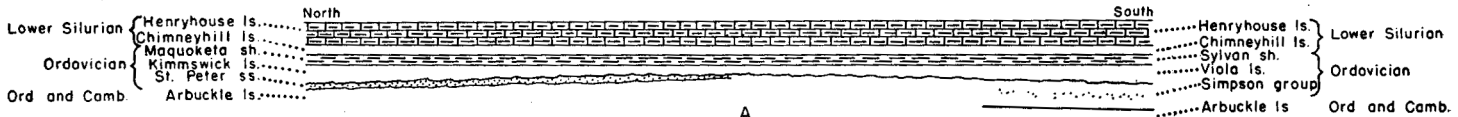


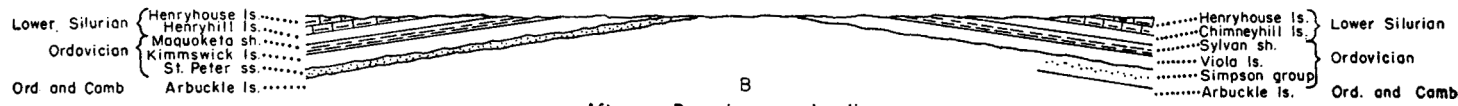
CHAUTAQUA ARCH

Northeastern Kansas

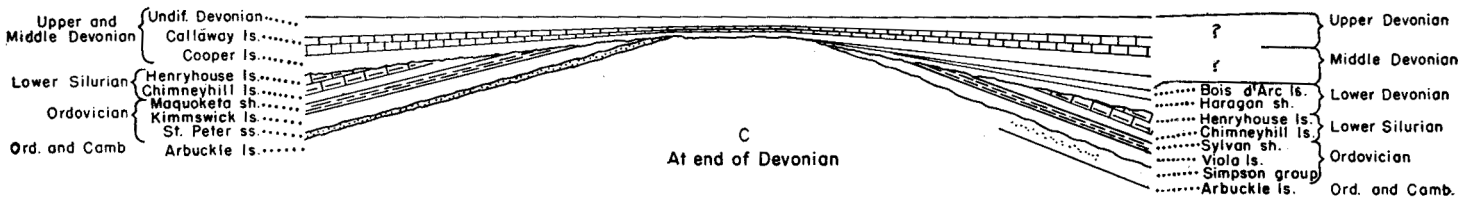
Southern Oklahoma



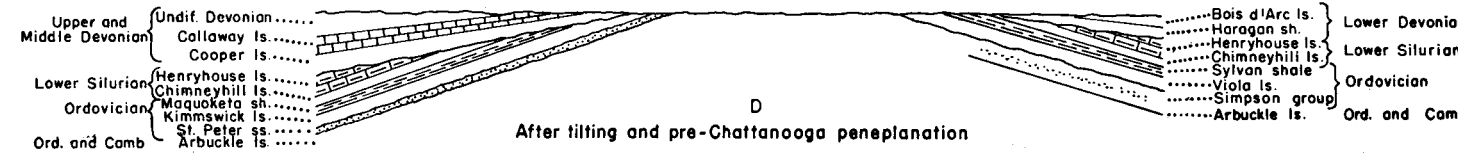
A
At end of lower Silurian



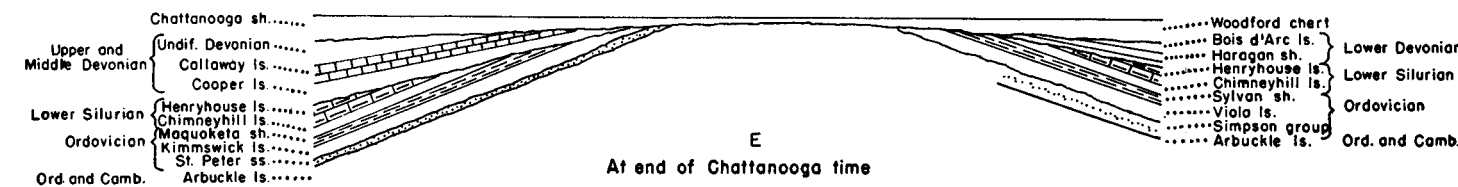
B
After pre-Devonian peneplanation



C
At end of Devonian



D
After tilting and pre-Chattanooga peneplanation



E
At end of Chattanooga time

Lower Silurian { Henryhouse ls.
Chimneyhill ls.
Maquoketa sh.
Ordoevician { Kimmswick ls.
St. Peter ss.
Ord and Camb { Arbuckle ls.

Lower Silurian { Henryhouse ls.
Chimneyhill ls.
Ordoevician { Sylvan sh.
Viola ls.
Simpson group
Ord and Camb { Arbuckle ls.

Lower Silurian { Henryhouse ls.
Henryhill ls.
Ordoevician { Maquoketa sh.
Kimmswick ls.
St. Peter ss.
Ord and Camb { Arbuckle ls.

Lower Silurian { Henryhouse ls.
Chimneyhill ls.
Ordoevician { Sylvan sh.
Viola ls.
Simpson group
Ord and Camb { Arbuckle ls.

Upper and Middle Devonian { Undif. Devonian
Callaway ls.
Cooper ls.
Lower Silurian { Henryhouse ls.
Chimneyhill ls.
Ordoevician { Maquoketa sh.
Kimmswick ls.
St. Peter ss.
Ord and Camb { Arbuckle ls.

Upper Devonian { ?
Middle Devonian { ?
Lower Devonian { Bois d'Arc ls.
Haragon sh.
Lower Silurian { Henryhouse ls.
Chimneyhill ls.
Ordoevician { Sylvan sh.
Viola ls.
Simpson group
Ord and Camb { Arbuckle ls.

Upper and Middle Devonian { Undif. Devonian
Callaway ls.
Cooper ls.
Lower Silurian { Henryhouse ls.
Chimneyhill ls.
Ordoevician { Maquoketa sh.
Kimmswick ls.
St. Peter ss.
Ord and Camb { Arbuckle ls.

Lower Devonian { Bois d'Arc ls.
Haragon sh.
Lower Silurian { Henryhouse ls.
Chimneyhill ls.
Ordoevician { Sylvan shale
Viola ls.
Simpson group
Ord and Camb { Arbuckle ls.

Chattanooga sh.
Upper and Middle Devonian { Undif. Devonian
Callaway ls.
Cooper ls.
Lower Silurian { Henryhouse ls.
Chimneyhill ls.
Ordoevician { Maquoketa sh.
Kimmswick ls.
St. Peter ss.
Ord and Camb { Arbuckle ls.

Woodford chert
Lower Devonian { Bois d'Arc ls.
Haragon sh.
Lower Silurian { Henryhouse ls.
Chimneyhill ls.
Ordoevician { Sylvan sh.
Viola ls.
Simpson group
Ord and Camb { Arbuckle ls.