

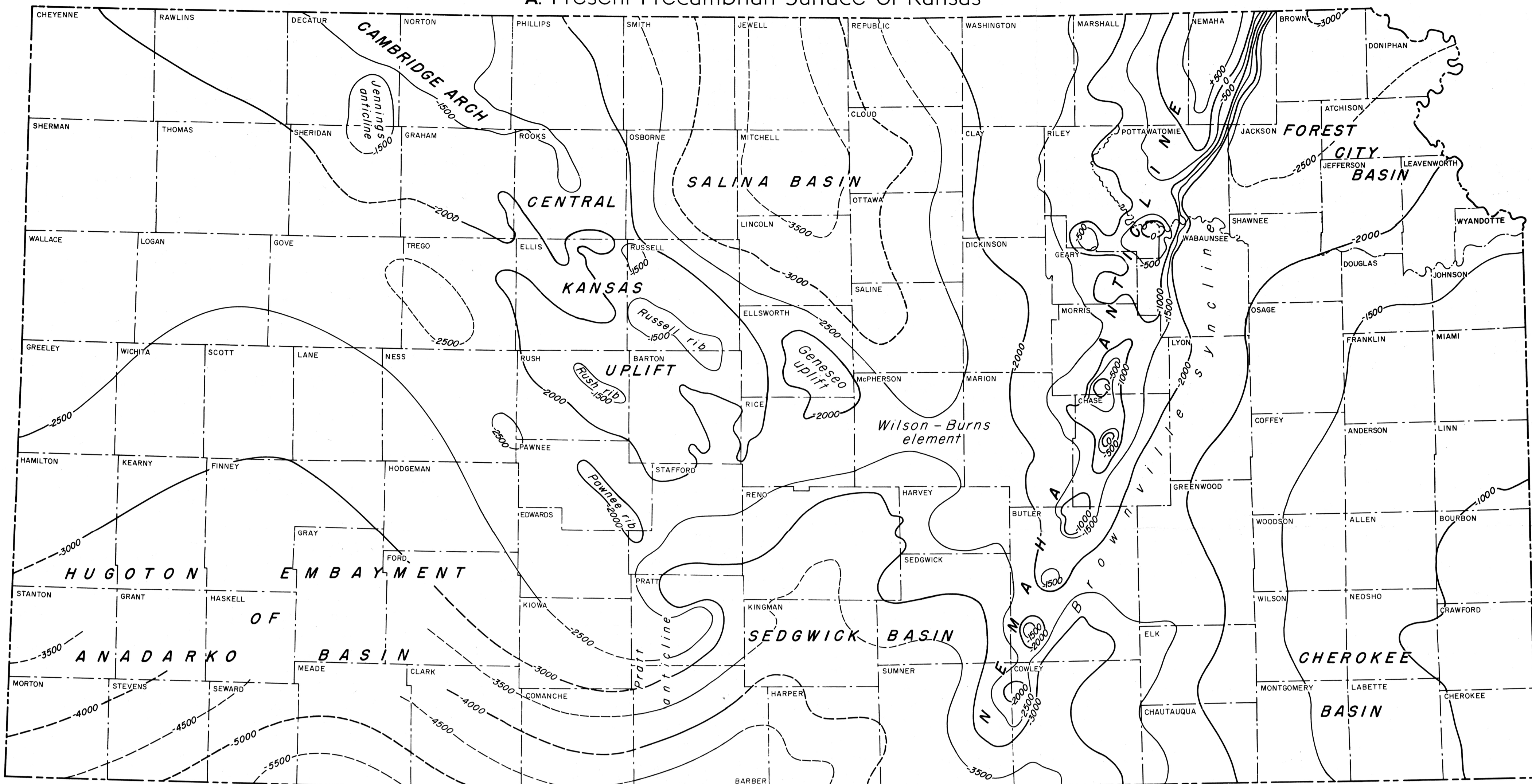
THE PRECAMBRIAN ROCKS OF KANSAS

STATE GEOLOGICAL SURVEY OF KANSAS

by O. C. Farquhar, 1957

BULLETIN 127, PART 3
PLATE 1

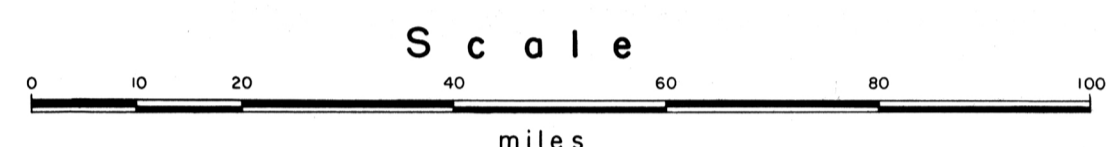
A. Present Precambrian Surface of Kansas



EXPLANATION

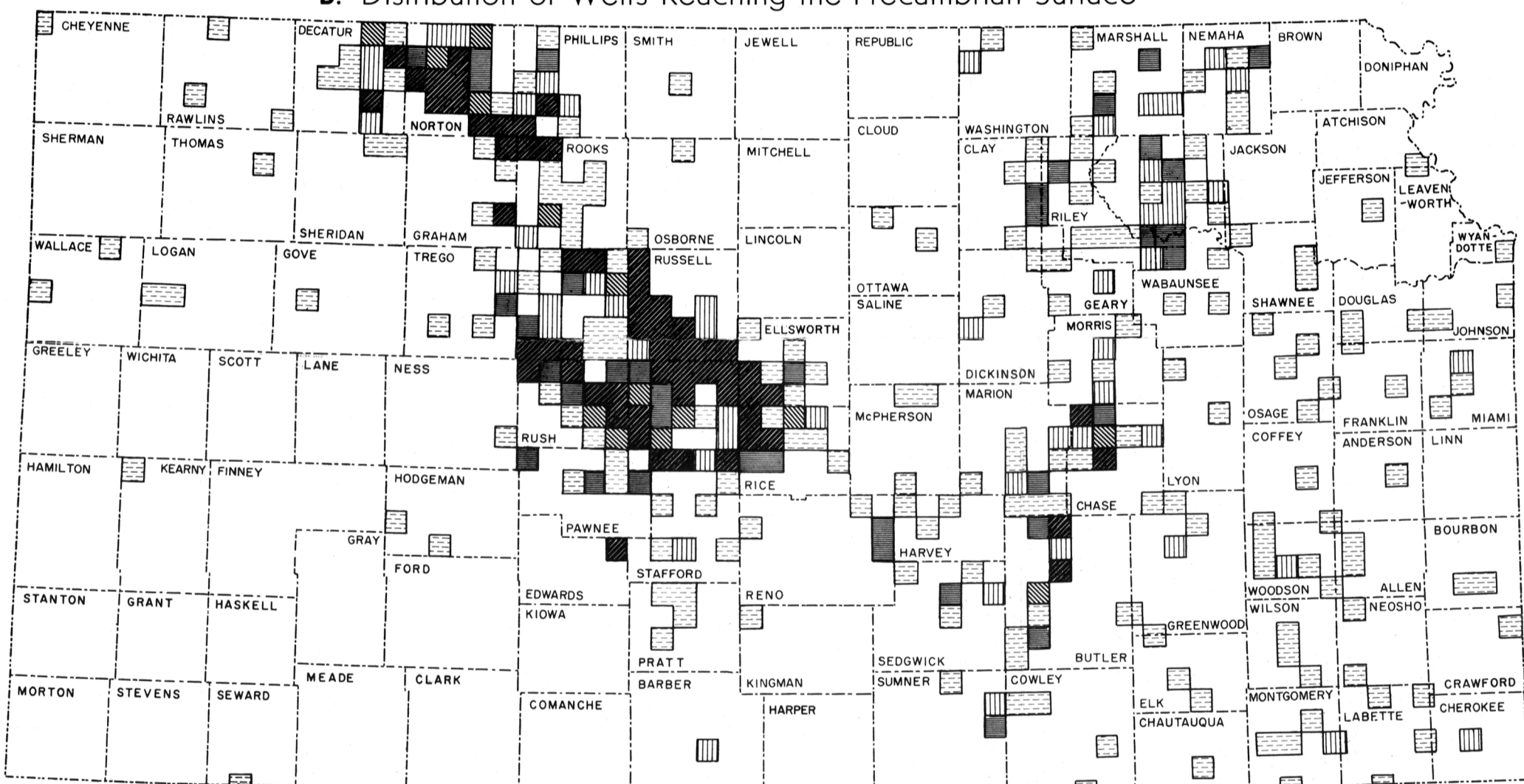
List of Structures

<p><i>Initiated in pre-Mississippian time and subsequently re-activated</i></p> <ul style="list-style-type: none"> Salina basin Genesee uplift Central Kansas Uplift Russell rib Kansas Uplift Rush rib Pawnee rib 	<p><i>Mississippian and later</i></p> <ul style="list-style-type: none"> Wilson-Burns element Sedgwick basin Hugoton embayment of Anadarko basin Cambridge arch 	<p><i>Forest City basin</i></p> <ul style="list-style-type: none"> Nemaha anticline Brownville syncline Cherokee basin Jennings anticline Pratt anticline
---	---	--



Contours
500 Contour interval 500 feet
(lines broken where control is inadequate)
Datum sea level

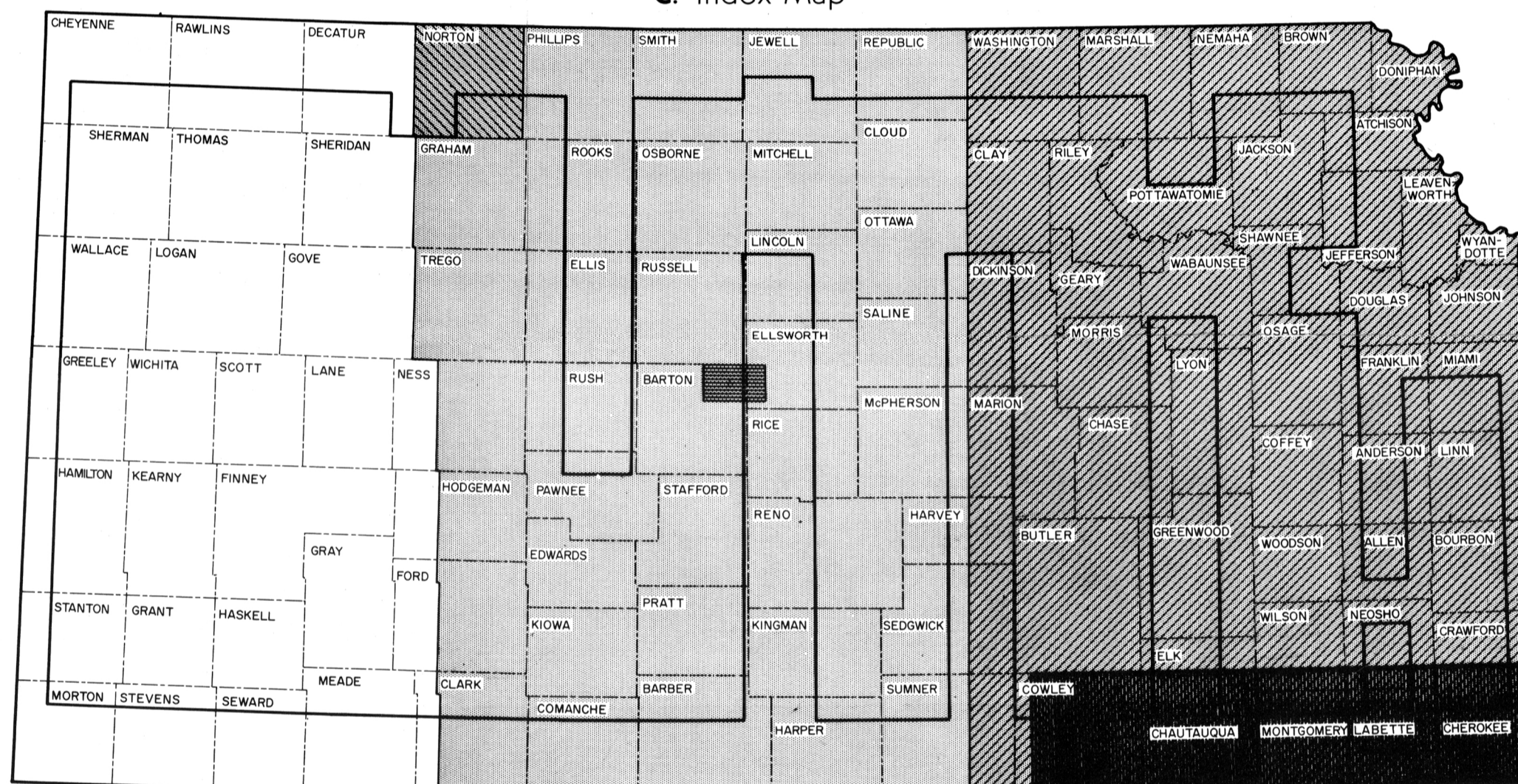
B. Distribution of Wells Reaching the Precambrian Surface



EXPLANATION

1 well per township	3 wells per township
2 wells per township	4 wells per township
5 or more wells per township	

C. Index Map

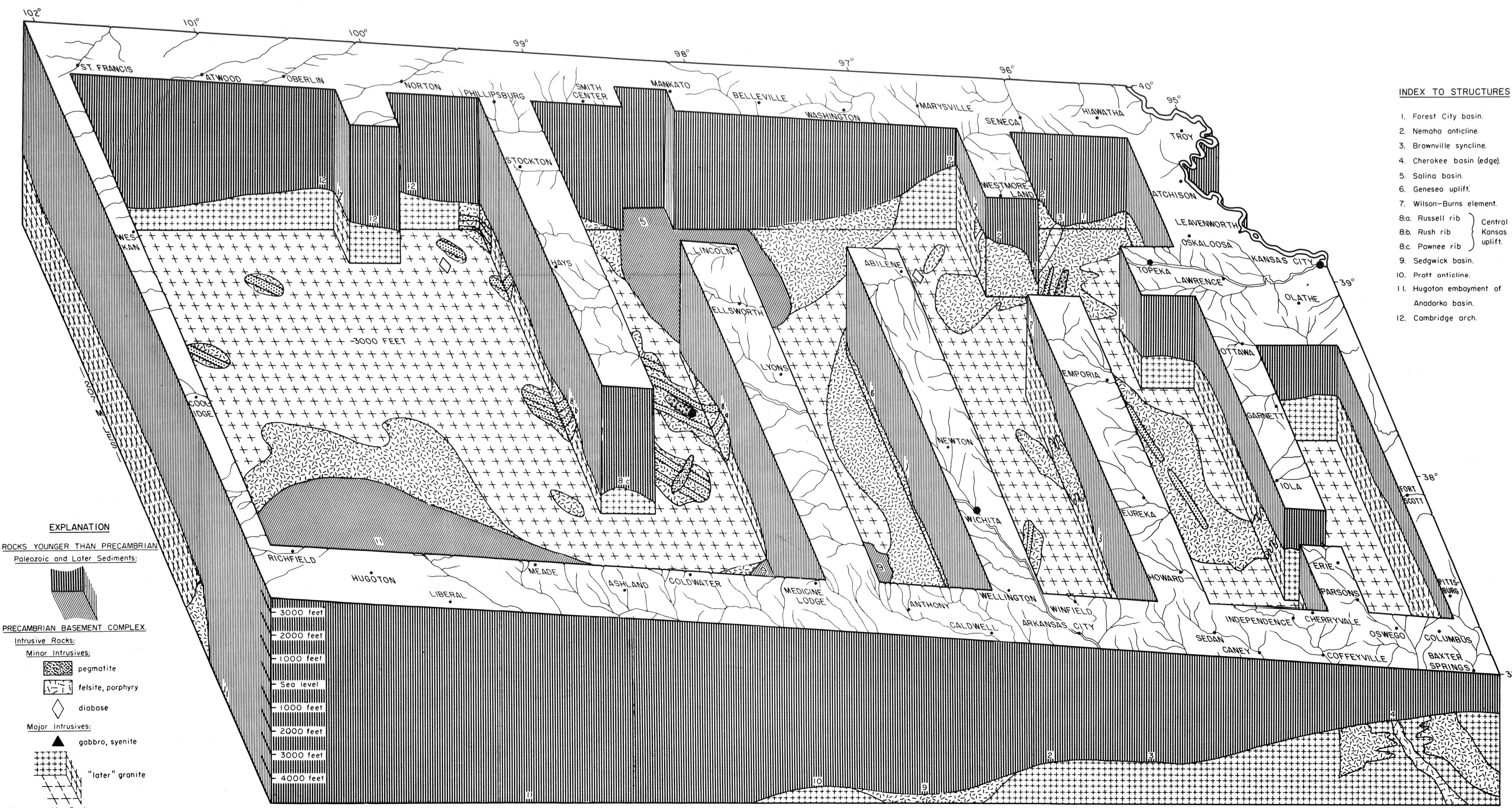


EXPLANATION

Areas covered by earlier maps of the Precambrian

MOORE and LANDES (1927, fig. 54) and JEWETT (1954, fig. 9)
METTNER (1935)
MERRIAM and GOEBEL (1954, fig. 3)
WALTERS (1946, fig. 5)
RELAND (1955, fig. 1)

Heavy lines refer to sections in block diagram below.



EXPLANATION

ROCKS YOUNGER THAN PRECAMBRIAN
Paleozoic and Later Sediments

PRECAMBRIAN BASEMENT COMPLEX

Intrusive Rocks:

- Minor intrusives:
 - pegmatite
 - felsite, porphyry
 - diabase
- Major intrusives:
 - gabbro, syenite
 - "later" granite

Metamorphic Rocks:

- Foliated Metasediments and Orthogneiss:
 - "earlier" granitic gneiss
 - schist, phyllite, non-granitic gneiss
 - quartzite, granulite

INDEX TO STRUCTURES

1. Forest City basin.
2. Nemaha anticline.
3. Brownville syncline.
4. Cherokee basin (edge).
5. Salina basin.
6. Genesee uplift.
7. Wilson-Burns element.
- 8a. Russell rib } Central Kansas Uplift
- 8b. Rush rib }
- 8c. Pawnee rib }
9. Sedgwick basin.
10. Pratt anticline.
11. Hugoton embayment of Anadarko basin.
12. Cambridge arch.

D. Basement Complex in Relation to Younger Rocks of Kansas