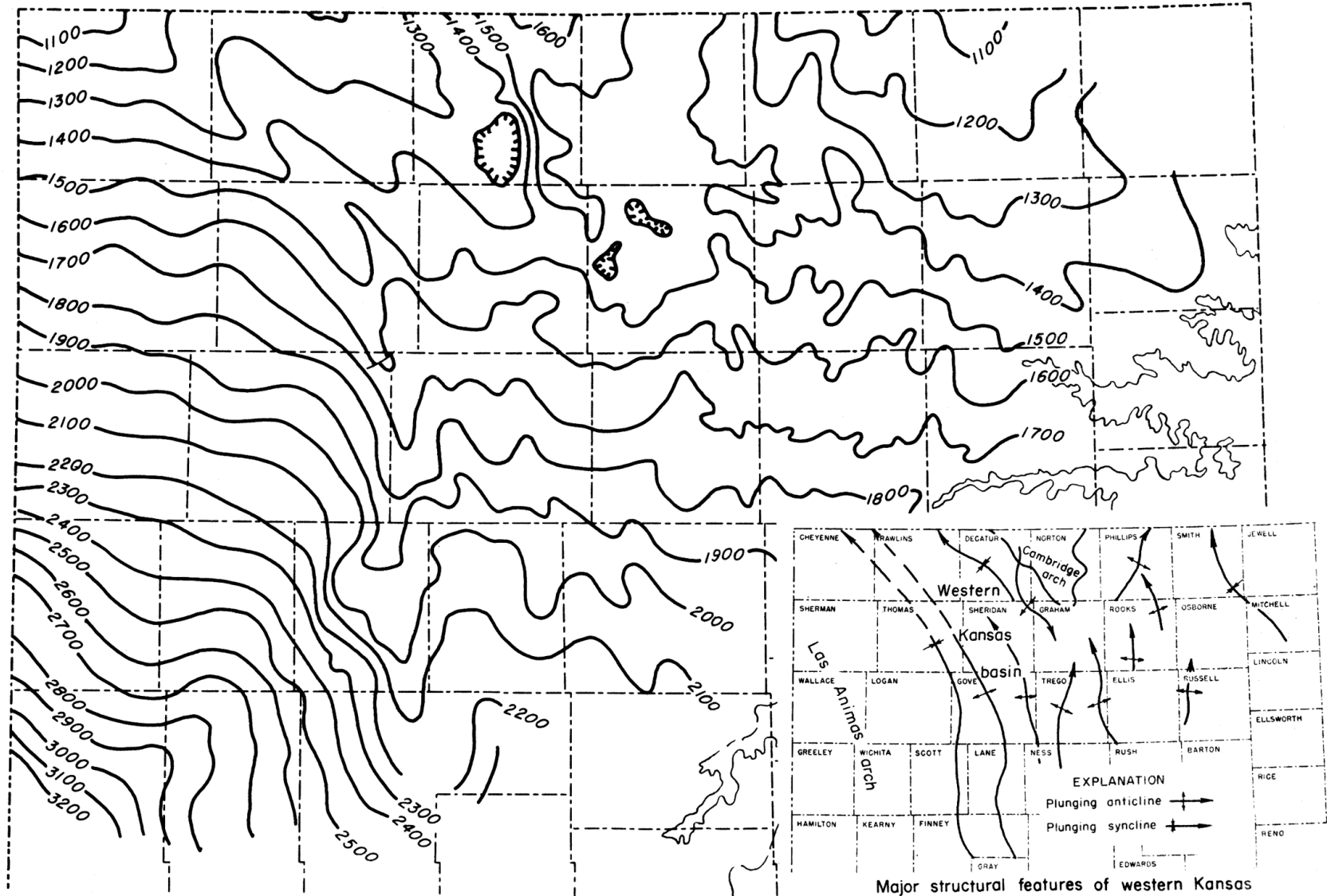


Structure and Convergence Maps;
Dakota and Ogallala Formations in Western Kansas

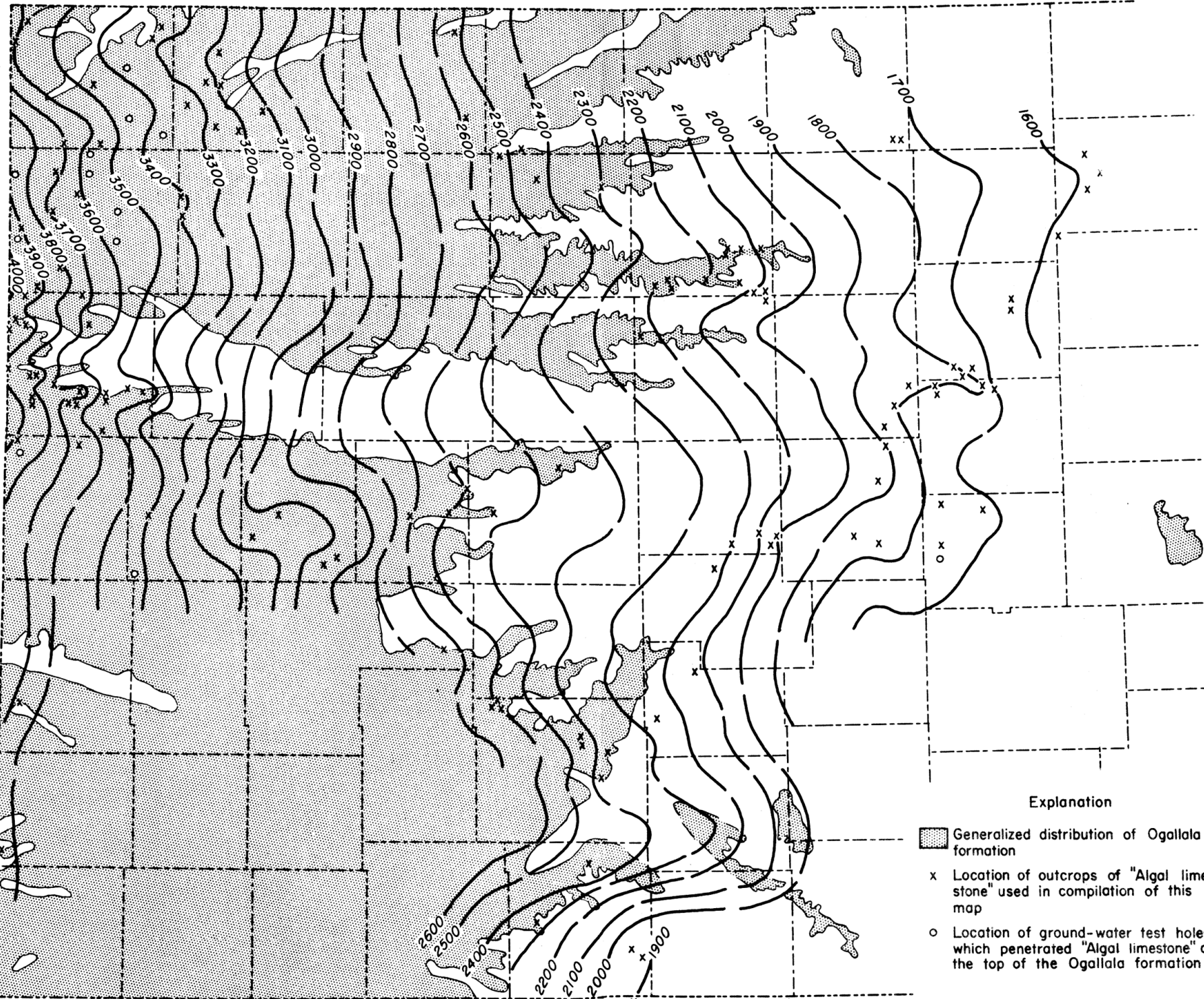
State Geological Survey
of Kansas

Daniel F. Merriam and John C. Frye
1954

Bulletin 109, Part 4
Plate 2

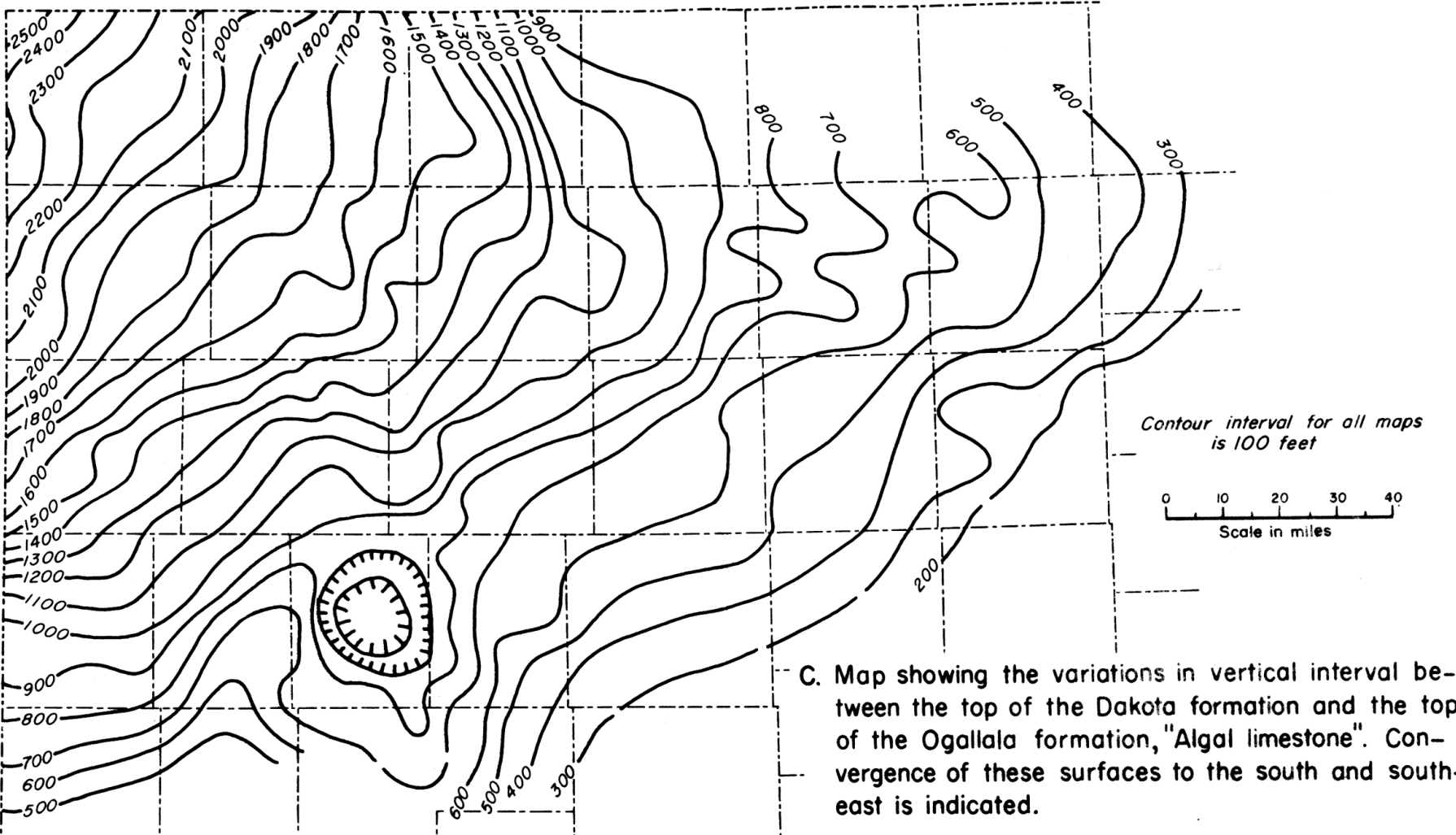


A. Structural attitude of the top of the Dakota formation
(From Lee and Merriam, 1954)



B. Structural attitude of the top of the Ogallala formation ("Algal limestone")

(Elevations were in part taken from
U.S.G.S. quadrangle maps.)



C. Map showing the variations in vertical interval between the top of the Dakota formation and the top of the Ogallala formation, "Algal limestone". Convergence of these surfaces to the south and south-east is indicated.