



K A N S A S

RODERICK L. BREMBY, SECRETARY

DEPARTMENT OF HEALTH AND ENVIRONMENT

KATHLEEN SEBELIUS, GOVERNOR

AUG -5 2005

KANSAS WATER POLLUTION CONTROL REVOLVING LOAN FUND PROGRAM
FINDING OF NO SIGNIFICANT IMPACT

TO: All Interested Government Agencies and Public Groups

In accordance with procedures for implementing the Kansas Water Pollution Control Revolving Loan Fund Act (K.S.A. 65-3321 to 65-3329, K.A.R. 28-16-110 to 28-16-138 effective May 29, 1989 and T28-16-137 effective October 26, 1989, and the Kansas Environmental Review Procedure for the Kansas Water Pollution Control Revolving Loan Program dated February 1989), an environmental review has been performed on the proposed agency action below:

Project Name: Leavenworth County, Kansas KWPCRF Project No. C20 1429 01
Sewer District No. 7
Connection to the City of Basehor

Total Project Amount: \$424,500

Potential Loan Amount: \$424,500

Project Description, Location and Purpose

Leavenworth County Sewer District No. 7 serves the Cedar Lakes Estates in Leavenworth County in northeast Kansas. The subdivision has been served by a grinder pump pressure sewer collection system and a temporary wastewater treatment facility consisting of a three cell discharging lagoon system. The facility discharged into a tributary of Wolf Creek under an NPDES Permit No. M-KS04-0006. In December 2004 KDHE issued an Administrative Order requiring the Sewer District No. 7 collection system connect to the City of Basehor sewage collection and treatment system and abandon the existing lagoon.

The project will finance the construction costs of a pressure sewer line extension to an existing lift station and force main to connect Sewer District No. 7 to the City of Basehor sewer system. In addition the loan will finance the connection fees required by the City of Basehor.

The site and the layout of the facility is shown on the attached map. All aspects of the project are eligible for KWPCRF loan assistance, with the exception of the purchase of land and easements.

DIVISION OF ENVIRONMENT
Bureau of Water, Municipal Programs
1000 SW Jackson, Suite 420
Fax Number: (785) 296-5509

CURTIS STATE OFFICE BUILDING,
Voice (785) 296-1567

Topeka, KS. 66612-1367
<http://www.kdhe.state.ks.us>

The primary environmental impacts of the project include noise of construction equipment, slight erosion of exposed soil. No adverse impacts on groundwater are anticipated.

Steps taken to minimize environmental impacts include implementation of erosion and sedimentation control measures and proper storage and disposal of construction materials. Land, materials, fuel and other forms of energy utilized in construction and operation of the facility will be irretrievably committed to the project.

Intergovernmental review comments including Kansas Department of Health and Environment, Kansas State Historical Society, Kansas Geological Survey, Kansas Biological Survey, Kansas Board of Agriculture-Division of Water Resources, Kansas Department of Wildlife and Parks, Kansas Water Office, Kansas Conservation Service, U.S. Fish and Wildlife Service, and the U.S. Army Corps of Engineers have been requested and received with favorable response.

The project will have no known impact on rare or endangered species, sensitive ecosystems, unique environmental features, significant archeological or historic sites, parks or other open space and recreation opportunities, wetlands or floodplains, groundwater, or air quality. No relocation of residences or other buildings will be required.

A public meeting was held on February 26, 2003 and a public hearing was held on June 28, 2004 to discuss the project and financial impacts. Special assessment taxes will be collected to repay the loan. The City of Basehor will collect monthly user charges for wastewater treatment in an amount not-to-exceed 125% of the base fee charged to city residences. The annual special assessment tax to homes in Sewer District No. 7 is estimated at \$240 per lot.

After considering both short-term and long-term effects of the project on the environment, it was determined that any short-term adverse impacts during construction will be offset by the long-term benefits derived from providing proper treatment of wastewater and elimination of the existing lagoon. No known endangered or threatened species were identified in the project area. The review did not indicate a significant environmental impact which could result from the proposed action. Consequently a preliminary decision has been made that an EIS will not be prepared.

This action is taken on the basis of a careful review of the facility plan, the environmental information document, environmental assessment and other supporting data which are on file at the State Office. A copy of the environmental assessment is attached. Other information is available for review on request. This agency will not take any administrative action on this project for at least thirty (30) days from the above date. Persons wishing to comment on this Finding of No Significant Impact may submit comments to the Department of Health and Environment during this period to the attention of Rod Geisler, Chief, Municipal Programs.

Sincerely yours,



Ronald F. Hammerschmidt, Ph.D.
Director, Division of Environment

*Acting
for*

8-5-05

Attachments

Map
Distribution List
EAD

EXHIBIT A

ENVIRONMENTAL ASSESSMENT DOCUMENT

A. Project Identification:

Applicant: Leavenworth County, Kansas

Project No. C20 1429 01

Owner: Leavenworth County Sewer District No. 7

County: Leavenworth

State: Kansas

Estimated Project Amount: \$424,500

Potential Loan Amount: \$424,500

B. Community Description:

Location: Leavenworth County Sewer District No. 7 serves the Cedar Lakes Estates subdivision located southwest of Basehor in Leavenworth County in northeast Kansas.

Population, Present, and Projected, and Design Year: Moderate population and commercial growth is expected to occur in the near future. The project provides connection of the Cedar Lakes Estates Subdivision to the City of Basehor sewage collection and treatment system.

Current Methods of Waste Treatment: Sewage disposal for the subdivision is provided through the use of individual home grinder pumps to a pressure sewer collection system, and a temporary three cell discharging lagoon system, that will be abandoned.

C. Project Description:

Purpose: Connection to the City of Basehor wastewater system and elimination of the temporary wastewater treatment lagoon.

Design Factors: 20 year design life.

D. Alternatives Considered:

Types: Several options were considered including connection to the City of Bonner Springs.

Reasons for Selection of Proposed Alternative: The alternative selected was found to be the most reliable and implementable option, and in conformance with sewerage plans developed for the City of Basehor and the Wolf Creek drainage area.

E. Impact Summary:

1. Construction: Slight wind and water erosion of exposed soils, noise from heavy construction equipment.
2. Population Impacts: No Significant change in population.
3. Land Use and Trends: Projected land use patterns will not be impacted. The project is in conformance with sewerage plans developed for the City of Basehor and the Wolf Creek drainage area.
4. Environmental: Alteration of existing land forms; Regionalization of wastewater treatment services. No adverse effect to groundwater is anticipated.
5. Financial: The service area is entirely residential. The monthly sewer user charge will be collected by the City of Basehor in an amount not-to-exceed 125% of base fee charged to city residences. The County will collect special assessment taxes to repay the loan. The annual special assessment tax to homes in Sewer District No. 7 is estimated at \$240 per lot.
6. Mitigation measures necessary to eliminate adverse environmental effect: Proper grading, drainage and slope protection to minimize erosion.
7. Irreversible and irretrievable commitment of resources: Materials used in construction of permanent structures; fuel and other forms of energy consumed during construction.

F. Measure taken to ensure Environmental Soundness:

1. Public Involvement: A public meeting was held on February 26, 2003 and a public hearing was held on June 28, 2004 to discuss the need for the project, user charges, and environmental impacts.
2. Public Opposition or Opinion: Members of the County Commission and residents of the area were present at the hearing. The County Commission decided to proceed with the project.
3. Coordination and Documentation with Other Agencies and Special Interest Groups
 - a. Facilities Plan dated January 2005 prepared by Ponzer-Youngquist.

b. Federal/Others:

1. U.S. Fish and Wildlife Service
2. Corps of Engineers
3. U.S. Dept. of Agriculture Natural Resources Conservation Service

c. State:

1. Kansas Department of Health and Environment
2. Kansas Department of Wildlife and Parks
3. Kansas Historical Society
4. Kansas Board of Agriculture/Division of Water Resources
5. Kansas Water Office
6. Kansas Conservation Commission
7. Kansas Corporation Commission
8. Kansas Biological Survey
9. Kansas Geological Survey

d. Consulting Engineers: Ponzer-Youngquist

G. Positive Environmental Effects to be realized from the Proposed Project: Improve wastewater collection and treatment and eliminate the temporary wastewater lagoon.

H. Reasons for concluding there will be no significant impacts: Population densities and land use patterns will not be significantly affected, no historical site or sites of archeological significance will be affected. No wetlands or other sensitive environmental areas will be affected. Recreation opportunities and open space will not be adversely affected.

Habib Ghal

REVIEWING ENGINEER

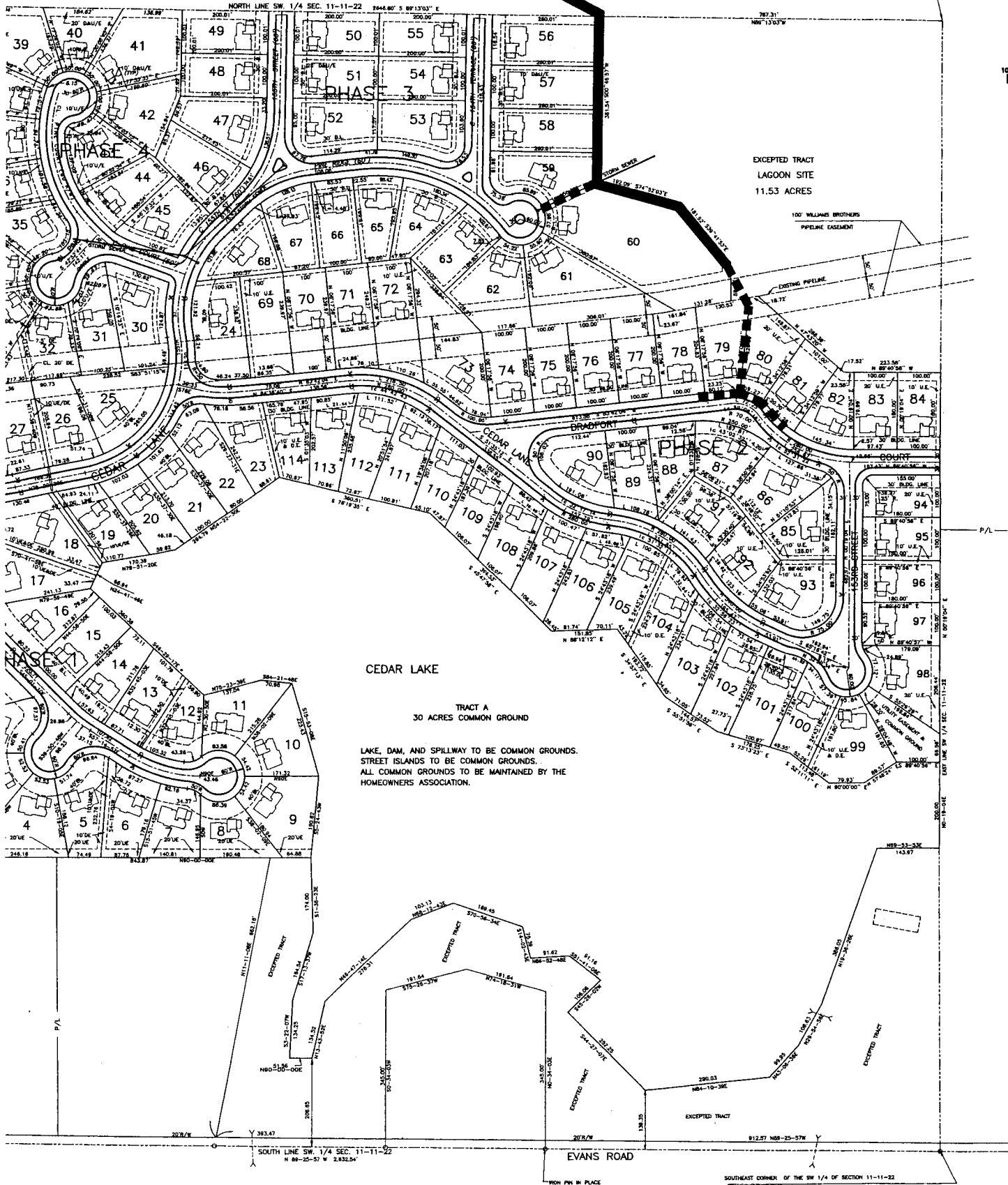
08-03-05

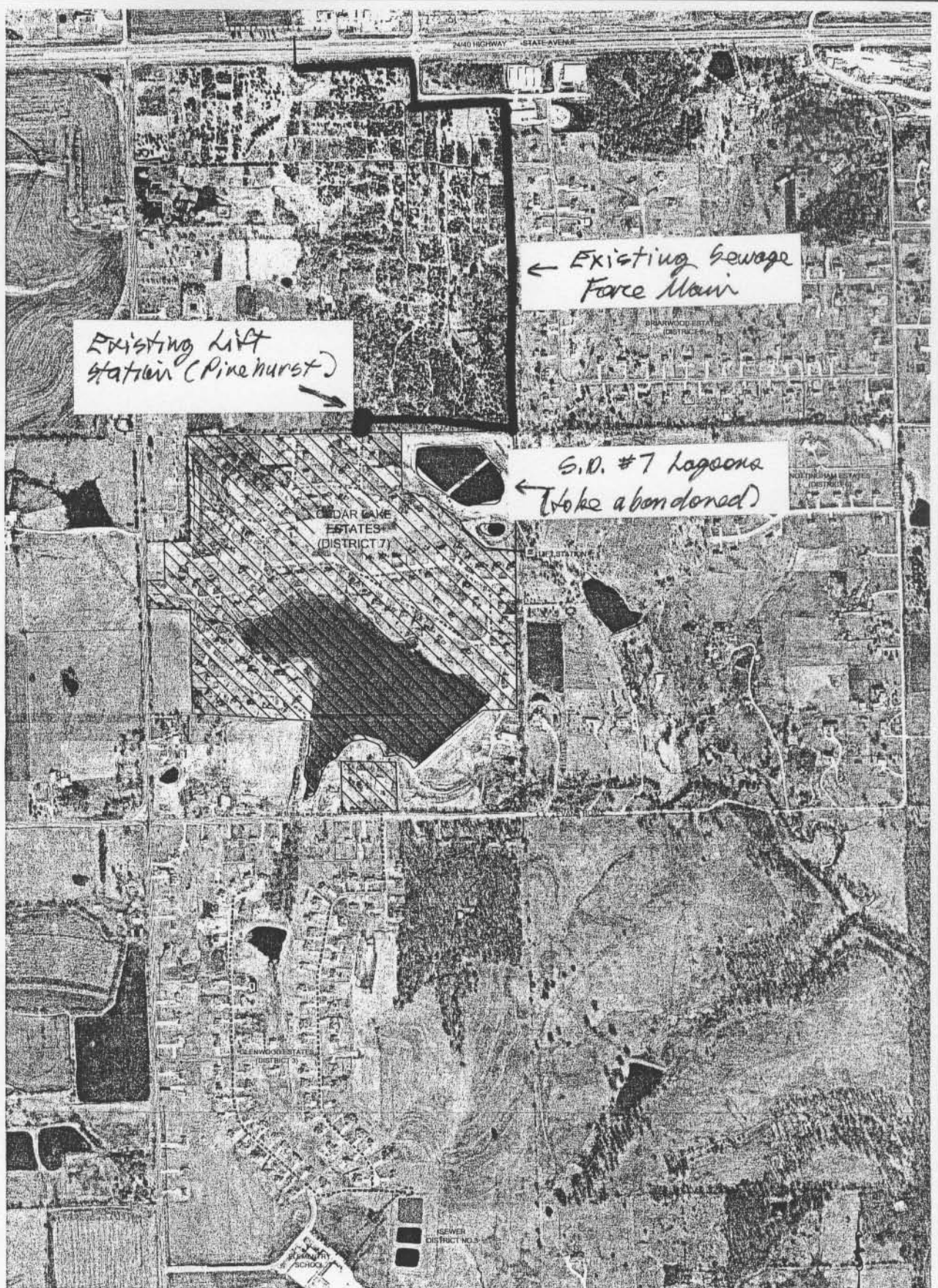
DATE

Lv. Co. S.D. # 7 CEDAR LAKE ESTATES

Existing LIFT STATION
(PINEHURST)

NE CORNER SW 1/4 SECTION 11-11-22
FIND ALUMINUM MONUMENT
YES:
1. S 5.80' TO NAIL AND WASHER IN TOP FC POST
2. W 1.64' TO NAIL IN NW FACE FENCE POST
3. NE 7.92' TO NAIL IN E FACE 8" TREE





py

JUNE 19, 2002
PONZER-YOUNGQUIST P.A., INC.
Consulting Engineers & Land Surveyors
227 E. Dennis Avenue
Olathe, Kansas 66061
Phone: (913) 782-6541
Fax: (913) 782-0100
Email: py@ponzyoung.com

FIGURE 4
OPTION NO. 3

DISTRIBUTION LIST
LEAVENWORTH COUNTY S.D. NO. 7 KANSAS
FINDING OF NO SIGNIFICANT IMPACT

Kansas Dept. of Wildlife & Parks
Environmental Services Section
512 SE 25th Avenue
Pratt, Kansas 67124-8174

Kansas Water Office
901 S. Kansas Ave.
Topeka, Kansas 66612

Executive Director
Kansas State Historical Society
6425 SW 6th Ave
Topeka, Kansas 66601-3858

Kansas Biological Survey
University of Kansas
2041 Constant Ave
Lawrence, Kansas 66047-2906

Kansas Geological Survey
University of Kansas
Margaret Townsend
1930 Constant Ave. - Campus West
Lawrence, Kansas 66047

State Conservationist
Natural Resource Conservation Service
760 South Broadway
Salina, Kansas 67401

Kansas Corporation Commission
130 S Market - 2nd Floor
Wichita, Kansas 66202

Kansas Dept. of Agriculture
Division of Water Resources
109 S.W. 9th Street
Topeka, Kansas 66612

Basehor Sentinel
128 Oak, Box 256
Bonner Springs, KS 66012

State Conservation Commission
109 S.W. 9th Street
Topeka, Kansas 66612

U.S. Dept. of the Interior
Fish & Wildlife Service
Kansas State Office
315 Houston, Suite E
Manhattan, Kansas 66502

Environmental Protection Agency-Region VII
NPDES & Facilities Management
901 North 5th Street
Kansas City, Kansas 66101

U.S. Army Corps of Engineers
700 Federal Building
601 E. 12st Street
Kansas City, Missouri 64106

Environmental Protection Agency
Office of Federal Activities
Ariel Rios (2252A)
1200 Pennsylvania Ave. N.W.
Washington, D.C. 20004

City of Basehor
2620 N. 155th
PO Box 406
Basehor, Kansas 66007

The Tonganoxie Mirror
520 E. 4th Street
Tonganoxie, Kansas 66086

Leavenworth County Commissioners
300 Walnut
Leavenworth, Kansas 66048

Ponzer-Youngquist
227 E. Dennis
Olathe, Kansas 66061-4517

Trevor Urban, President
Cedar Lake Estates Home Association
15515 Cedar Lane
Bonner Springs, KS 66012