

Figure 2. CDP-stacked seismic sections from (a) Wilson Road (southern portion), (b) Wilson Road (northern portion), and (c) Rice Park, which had AGC scaling (using a 200-ms sliding window) applied pre-stack.

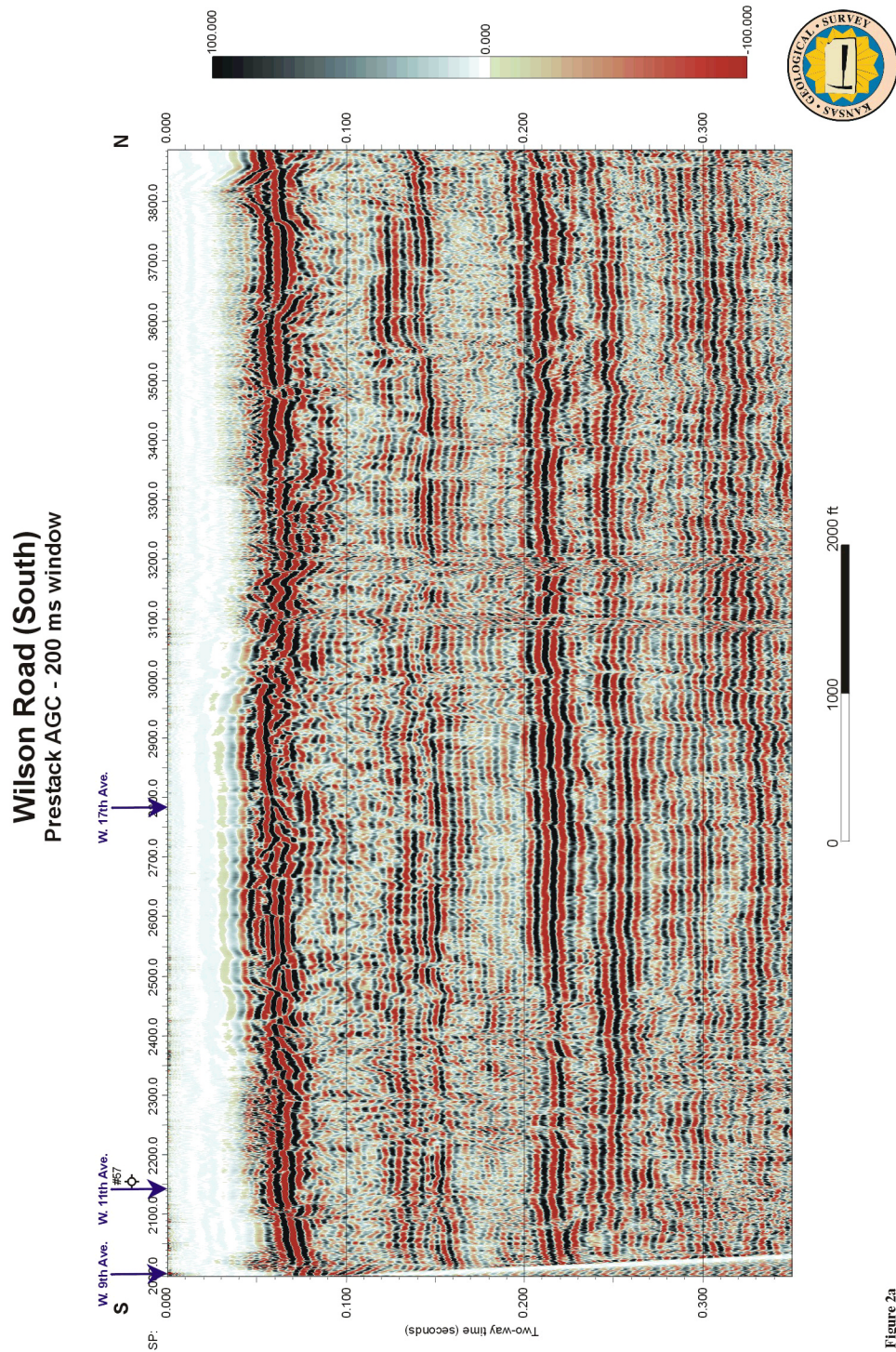


Figure 2a

Wilson Road (North) Prestack AGC - 200 ms window

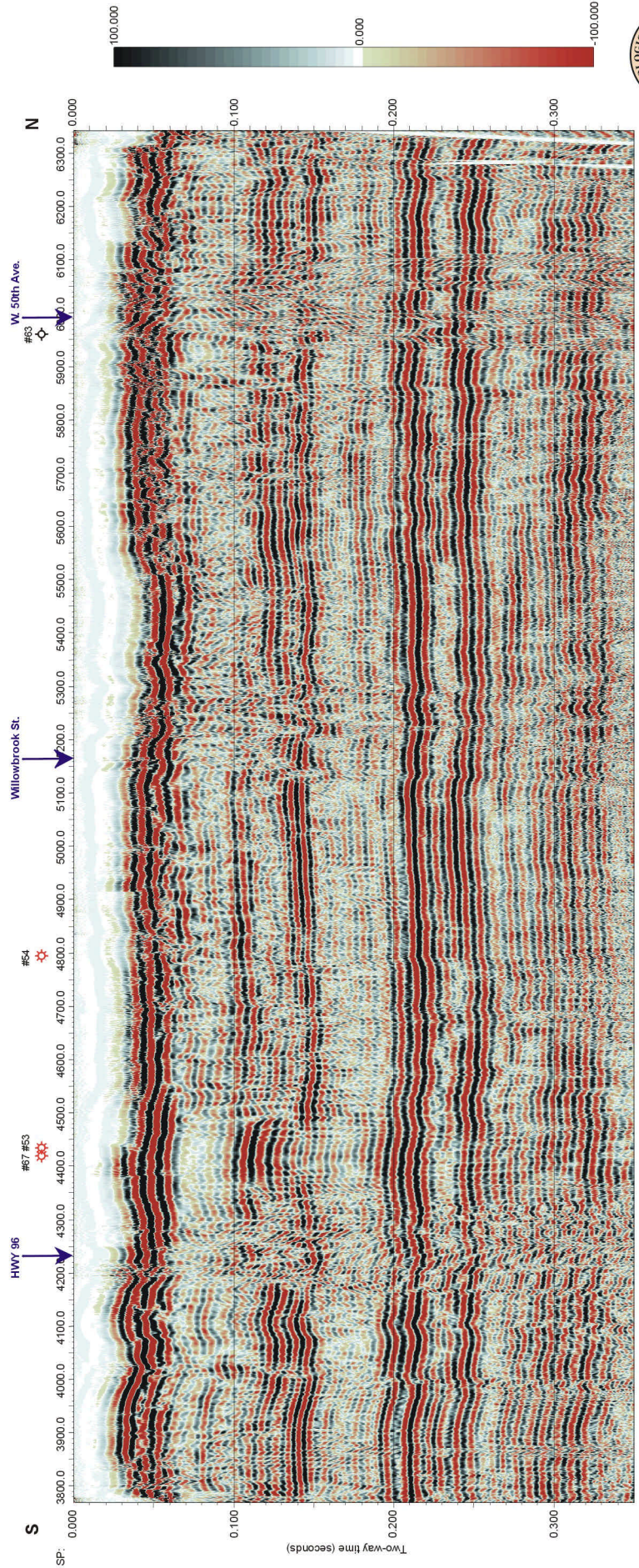


Figure 2b.

Rice Park

Prestack AGC - 200 ms window

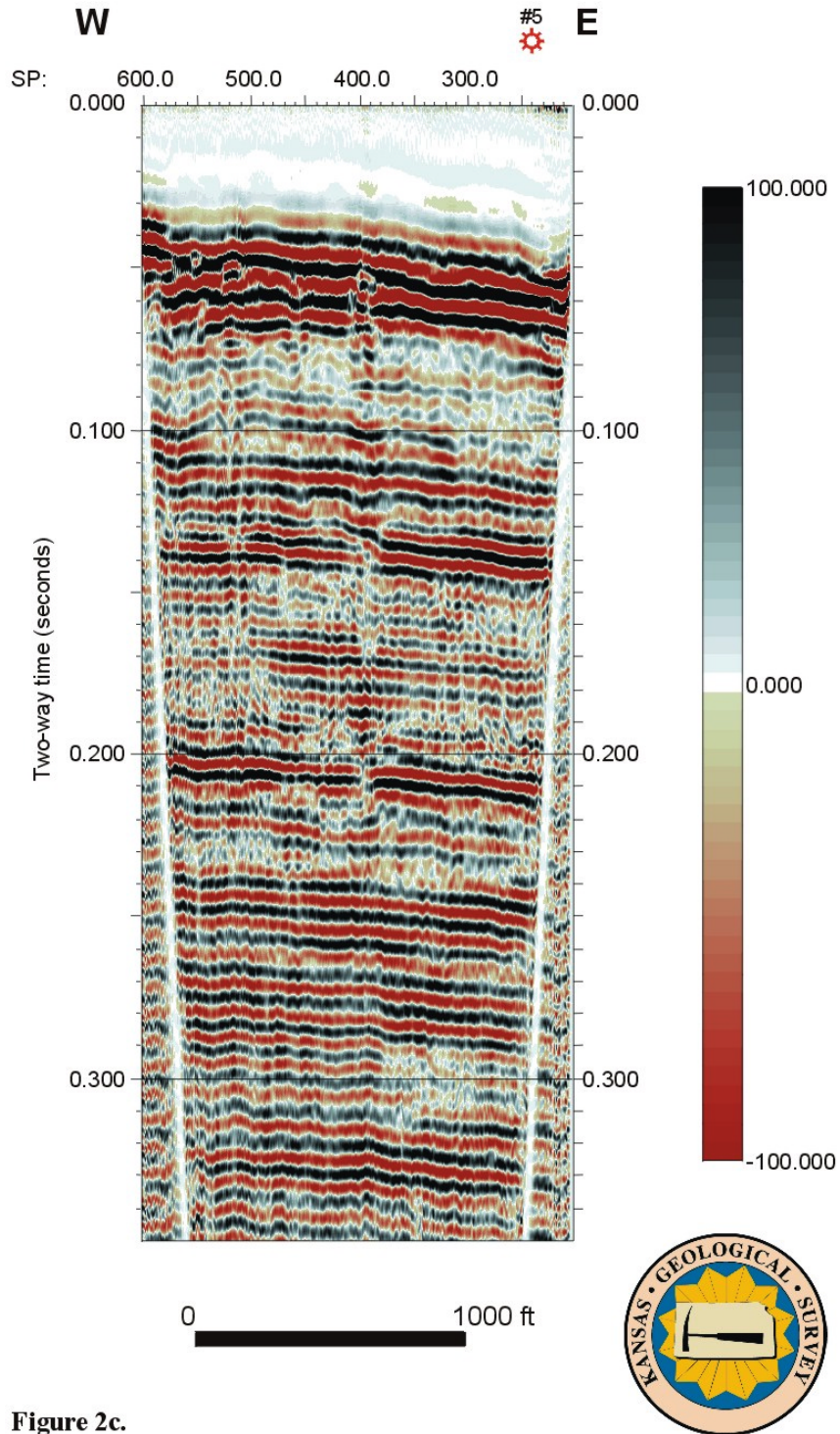


Figure 2c.