



**TRIPLE  
COMBO  
LOG**

Company SHAKESPEARE OIL COMPANY, INC.

Well CALE #1-27

Field

County GOVE

State KANSAS

Location: API #: 15-063-22391-0000

1070' FNL & 2280' FWL

SEC 27 TWP 11S RGE 31W

Permanent Datum GROUND LEVEL Elevation 2939  
Log Measured From KELLY BUSHING 11' A.G.L.  
Drilling Measured From KELLY BUSHING

Other Services  
CDL/CNL/PE  
DIL/MEL  
Elevation  
K.B. 2950  
D.F. 2948  
G.L. 2939

Date	11/18/21
Run Number	ONE
Depth Driller	4610
Depth Logger	4611
Bottom Logged Interval	4609
Top Log Interval	3600
Casing Driller	8 5/8" @ 269
Casing Logger	269
Bit Size	7 7/8
Type Fluid in Hole	CHEMICAL MUD
Density / Viscosity	9.4/56
pH / Fluid Loss	11.0/6.4
Source of Sample	FLOWLINE
Rm @ Meas. Temp	1.4 @ 60F
Rmf @ Meas. Temp	1.05 @ 60F
Rmc @ Meas. Temp	1.68 @ 60F
Source of Rmf / Rmc	MEASUREMENT
Rm @ BHT	0.69 @ 121F
Time Circulation Stopped	2 HOURS
Time Logger on Bottom	////
Maximum Recorded Temperature	121F
Equipment Number	3802
Location	HAYS, KANSAS
Recorded By	JASON CAPPELLUCCI
Witnessed By	KENT MATSON

<<< Fold Here >>>

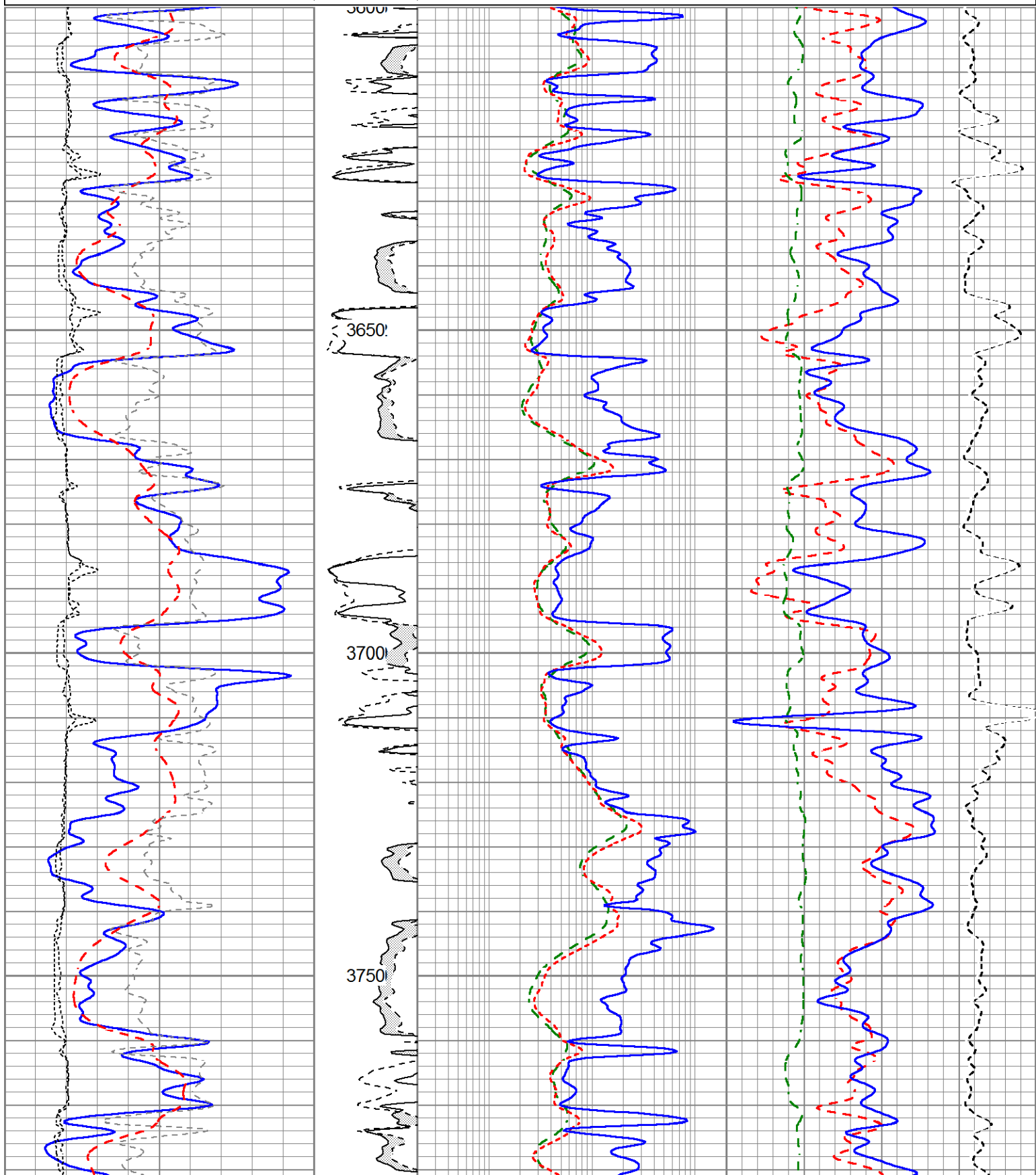
All interpretations are opinions based on inferences from electrical or other measurements and we cannot and do not guarantee the accuracy or correctness of any interpretation, and we shall not, except in the case of gross or willful negligence on our part, be liable or responsible for any loss, costs, damages, or expenses incurred or sustained by anyone resulting from any interpretation made by any of our officers, agents or employees. These interpretations are also subject to our general terms and conditions set out in our current Price Schedule.

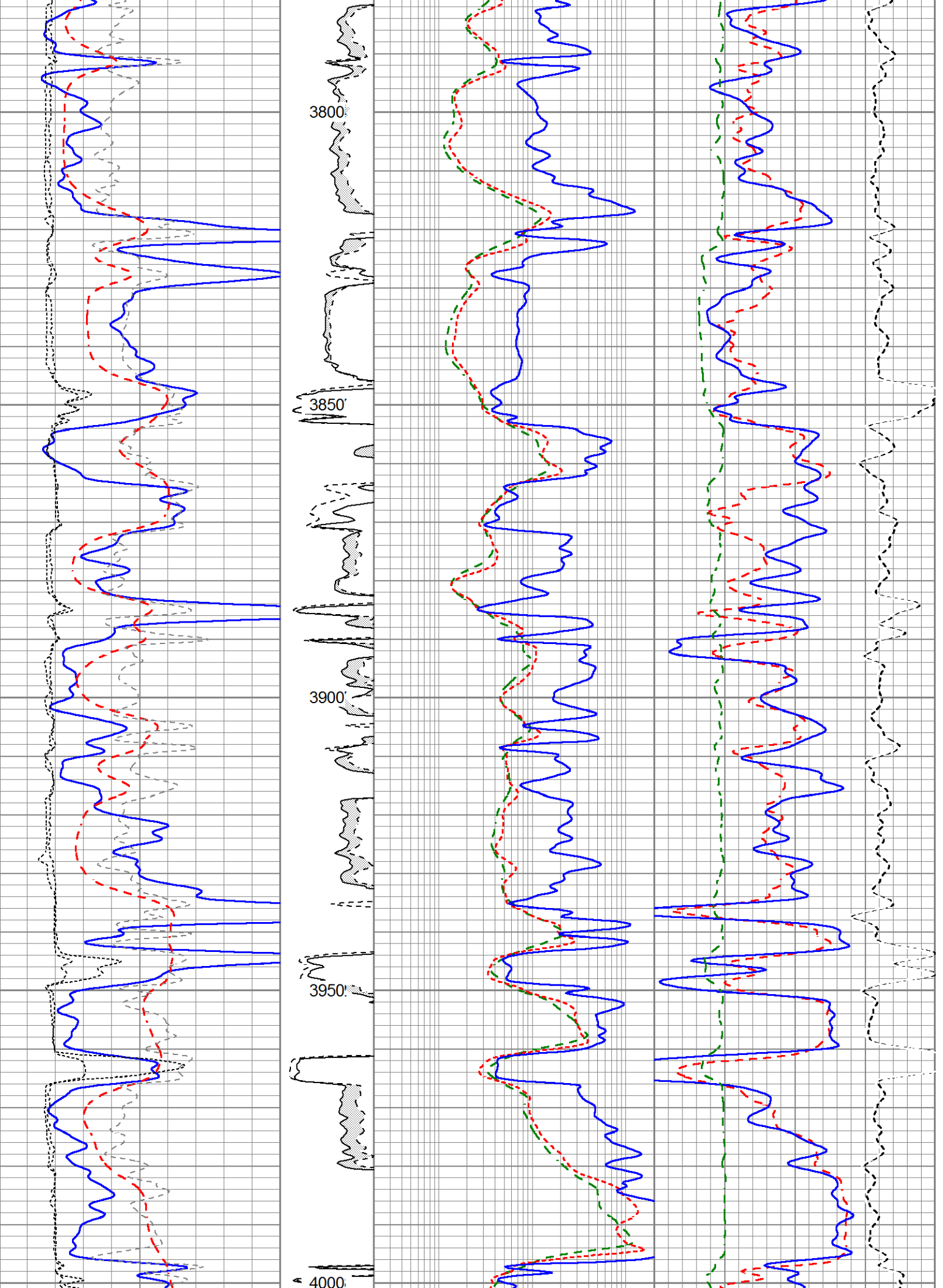
**Comments**

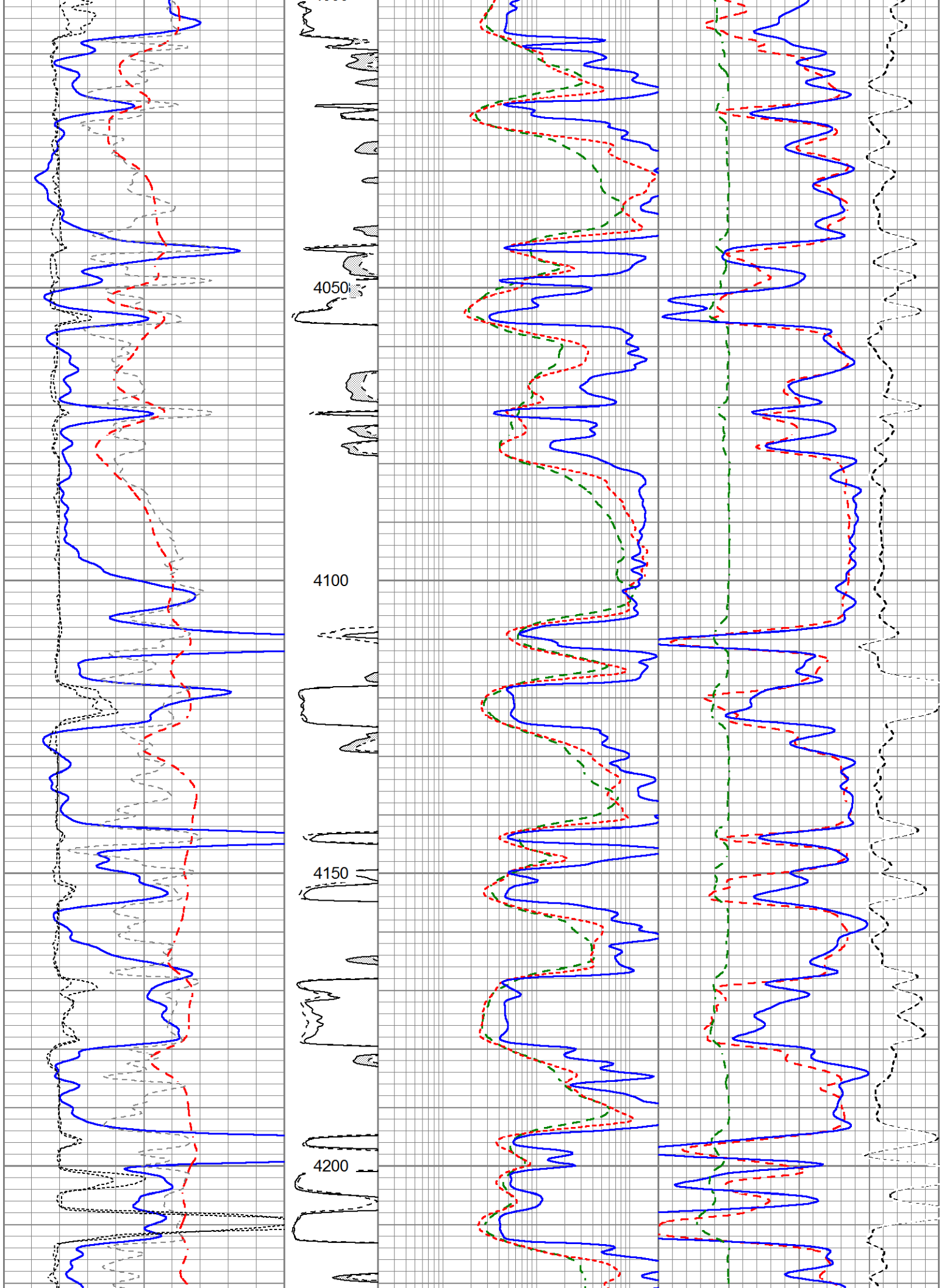
THANK YOU FOR USING ELI WIRELINE SERVICES, HAYS, KS. ( 785 ) 628-6395  
DIRECTIONS  
I 70 WEST TO CAMPUS EXIT - 2 1/2 SOUTH TO GOVE AA RD. - 1/2 WEST - SOUTH INTO

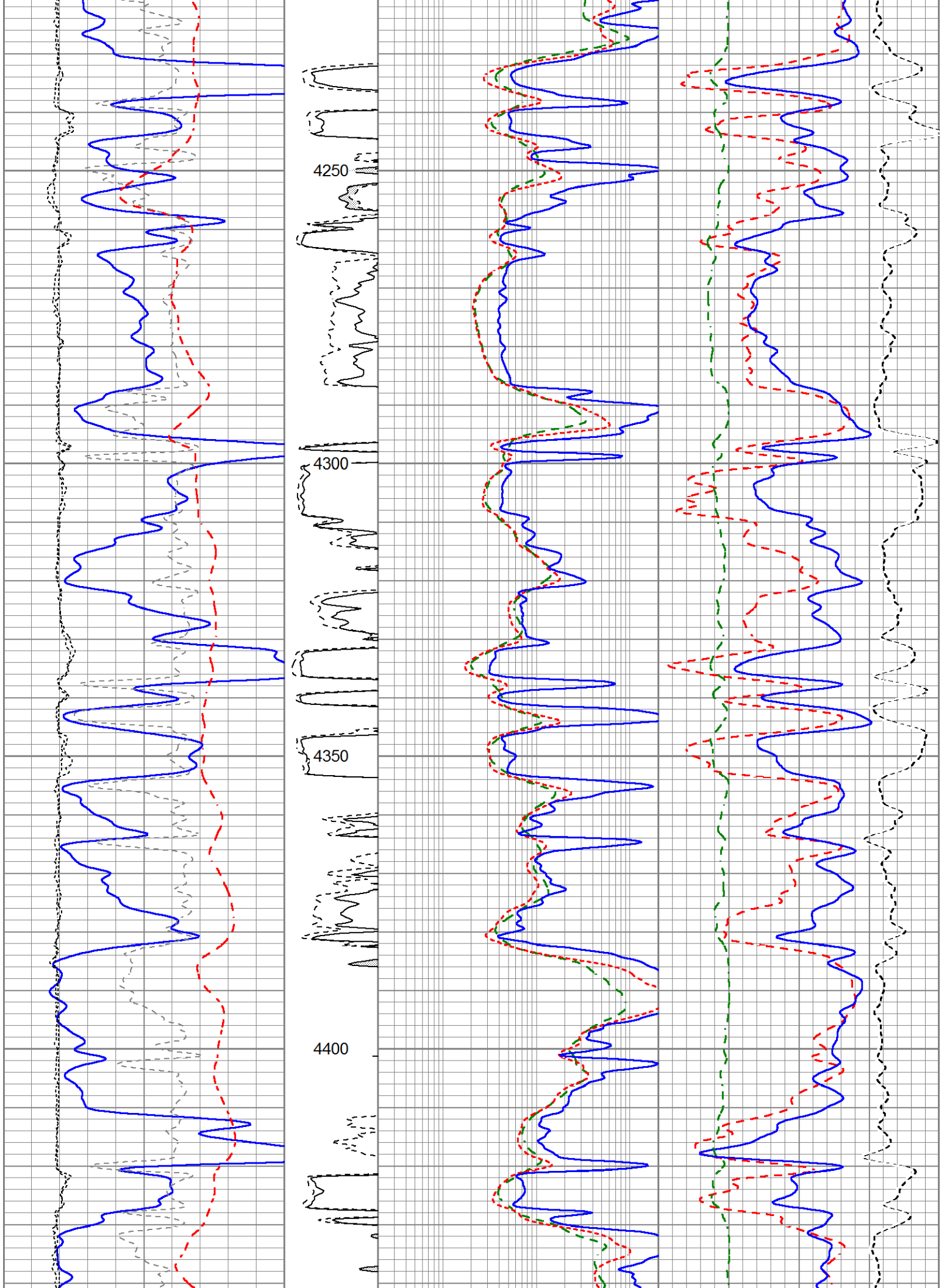
Database File 6053pe.db  
Dataset Pathname passM  
Presentation Format obrcompcol  
Dataset Creation Fri Nov 19 00:01:20 2021  
Charted by Depth in Feet scaled 1:240

0	Gamma Ray (GAPI)	150	MEL15	0.2	Deep Resistivity (Ohm-m)	200	30	CN Porosity (pu)	-10
-100	SP (mV)	100	(Ohm-m)	0.2	Medium Resistivity (Ohm-m)	200	30	Density Porosity (pu)	-10
-200	RxoRt	100	0	20	0.2	Shallow Resistivity (Ohm-m)	200	0	20
6	DCAL (in)	16	MEL20						
6	MELCAL (in)	16	(Ohm-m)						
			0	20					
			TBHV (ft3)						
			ABHV (ft3)						
								RHOC	
								-0.25 (g/cc)	0.25

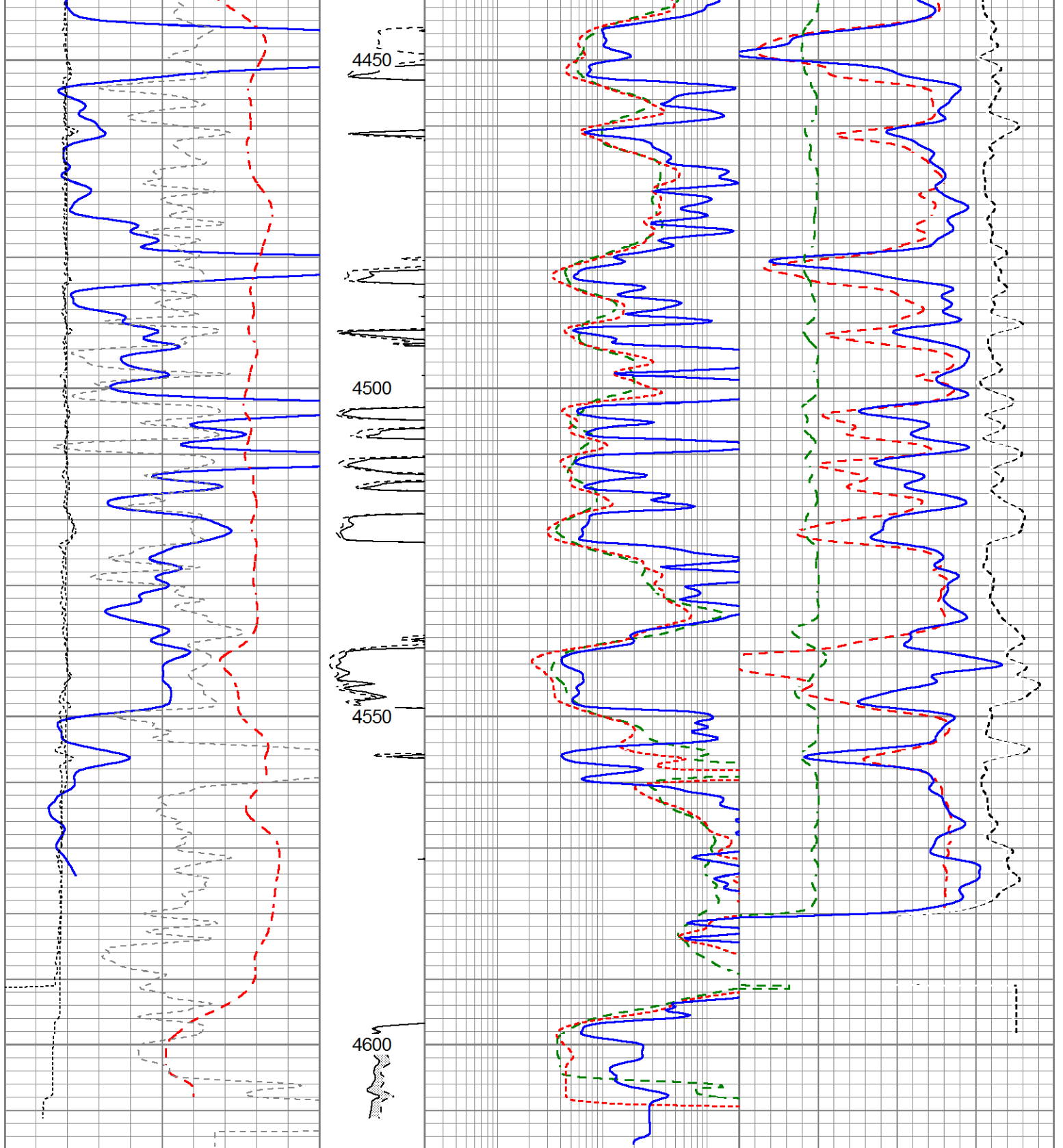












0	Gamma Ray (GAPI)	150	MEL15	0.2	Deep Resistivity (Ohm-m)	200	30	CN Porosity (pu)	-10	
-100	SP (mV)	100	(Ohm-m)	0.2	Medium Resistivity (Ohm-m)	200	30	Density Porosity (pu)	-10	
-200	RxoRt	100	0	20	0.2	Shallow Resistivity (Ohm-m)	200	0	PE	20
6	DCAL (in)	16	MEL20						RHOC	
6	MELCAL (in)	16	(Ohm-m)						-0.25 (g/cc)	0.25
			0	20						
			TBHV (ft3)							
			ABHV (ft3)							