



DUAL
INDUCTION
LOG

Company SHAKESPEARE OIL COMPANY, INC.

Well CALE #1-27

Field

County GOVE

State KANSAS

Location: API #: 15-063-22391-0000

1070' FNL & 2280' FWL

SEC 27 TWP 11S RGE 31W

Permanent Datum GROUND LEVEL Elevation 2939
Log Measured From KELLY BUSHING 11' A.G.L.
Drilling Measured From KELLY BUSHING

Other Services
CDL/CNL/PE
MEL
Elevation
K.B. 2950
D.F. 2948
G.L. 2939

| | |
|------------------------------|-------------------|
| Date | 11/18/21 |
| Run Number | ONE |
| Depth Driller | 4610 |
| Depth Logger | 4611 |
| Bottom Logged Interval | 4609 |
| Top Log Interval | 00 |
| Casing Driller | 8 5/8" @ 269 |
| Casing Logger | 269 |
| Bit Size | 7 7/8 |
| Type Fluid in Hole | CHEMICAL MUD |
| Density / Viscosity | 9.4/56 |
| pH / Fluid Loss | 11.0/6.4 |
| Source of Sample | FLOWLINE |
| Rm @ Meas. Temp | 1.4 @ 60F |
| Rmf @ Meas. Temp | 1.05 @ 60F |
| Rmc @ Meas. Temp | 1.68 @ 60F |
| Source of Rmf / Rmc | MEASUREMENT |
| Rm @ BHT | 0.69 @ 121F |
| Time Circulation Stopped | 2 HOURS |
| Time Logger on Bottom | //// |
| Maximum Recorded Temperature | 121F |
| Equipment Number | 3802 |
| Location | HAYS, KANSAS |
| Recorded By | JASON CAPPELLUCCI |
| Witnessed By | KENT MATSON |

<<< Fold Here >>>

All interpretations are opinions based on inferences from electrical or other measurements and we cannot and do not guarantee the accuracy or correctness of any interpretation, and we shall not, except in the case of gross or willful negligence on our part, be liable or responsible for any loss, costs, damages, or expenses incurred or sustained by anyone resulting from any interpretation made by any of our officers, agents or employees. These interpretations are also subject to our general terms and conditions set out in our current Price Schedule.

Comments

THANK YOU FOR USING ELI WIRELINE SERVICES, HAYS, KS. (785) 628-6395
DIRECTIONS
I 70 WEST TO CAMPUS EXIT - 2 1/2 SOUTH TO GOVE AA RD. - 1/2 WEST - SOUTH INTO

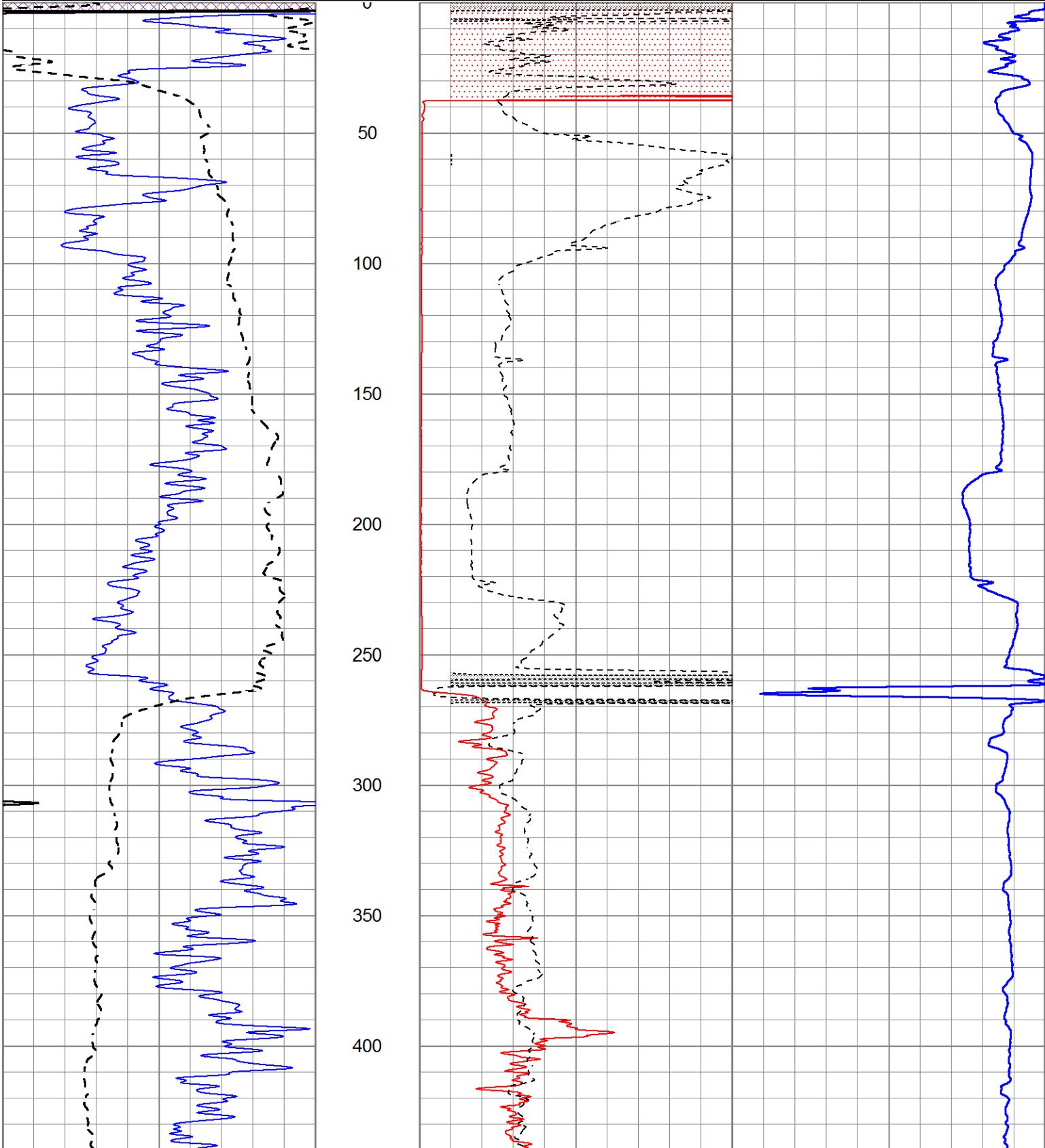


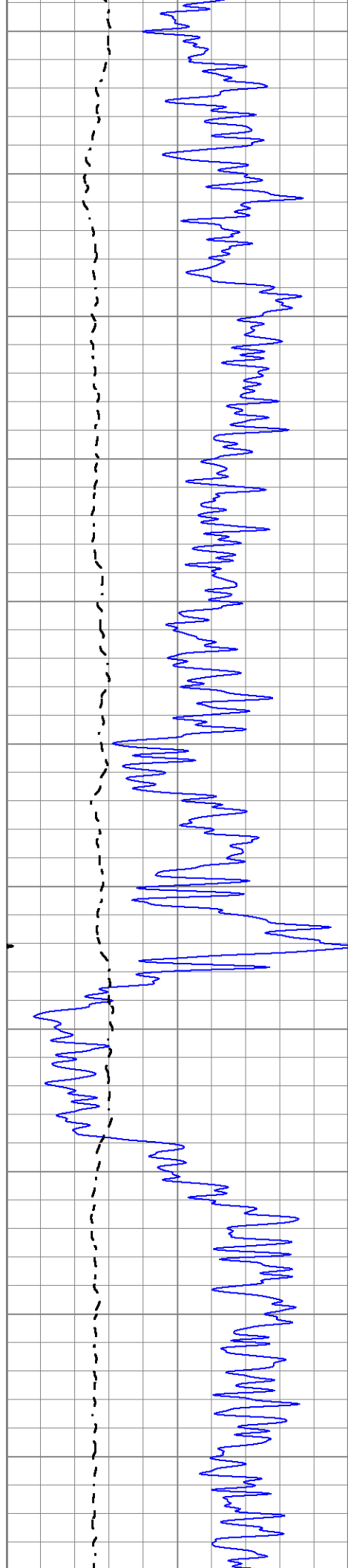
MAIN SECTION

Database File 6053pe.db
 Dataset Pathname pass3.3
 Presentation Format _dil2
 Dataset Creation Thu Nov 18 22:46:12 2021
 Charted by Depth in Feet scaled 1:600

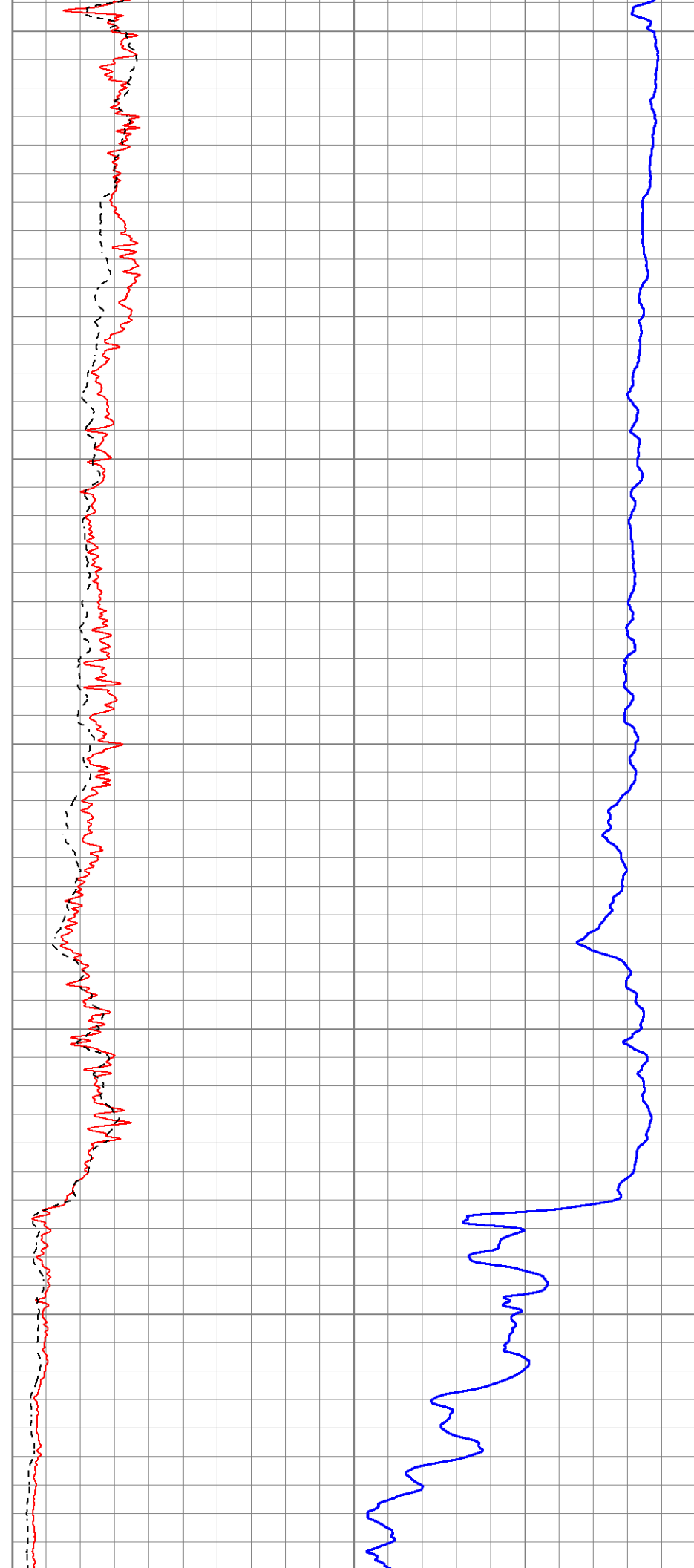
| | | |
|------|------------------|-----|
| 0 | Gamma Ray (GAPI) | 150 |
| -100 | SP (mV) | 100 |

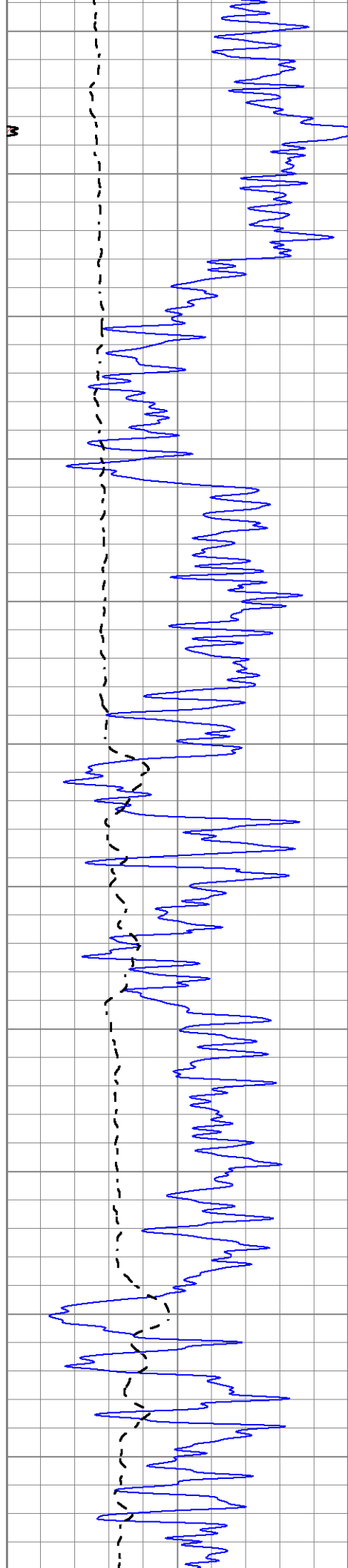
| | | |
|------|------------------------|-----|
| 1000 | CILD (mmho/m) | 0 |
| 0 | RLL3 (Ohm-m) | 50 |
| 0 | Deep Induction (Ohm-m) | 50 |
| 50 | RILD X10 (Ohm-m) | 500 |
| 50 | RLL3 X10 (Ohm-m) | 500 |



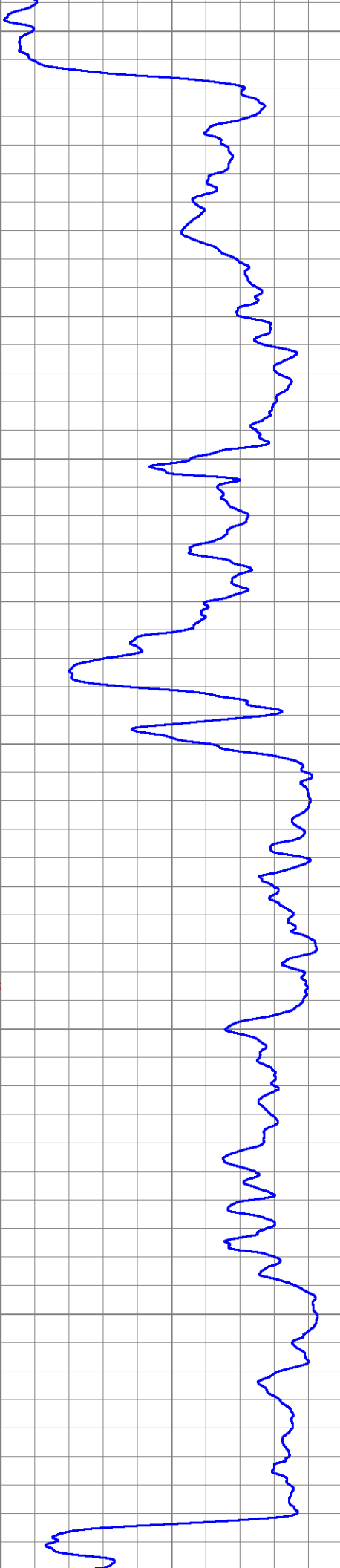
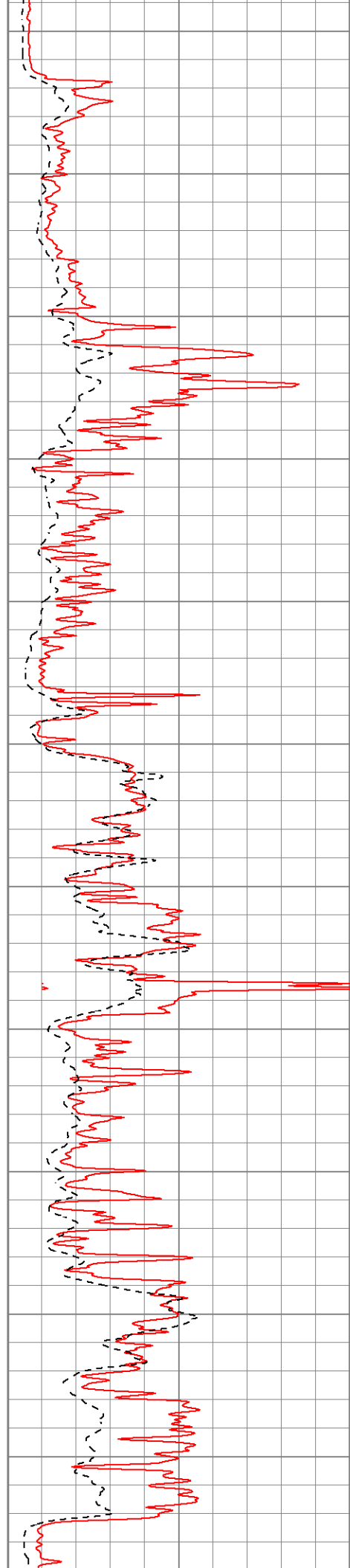


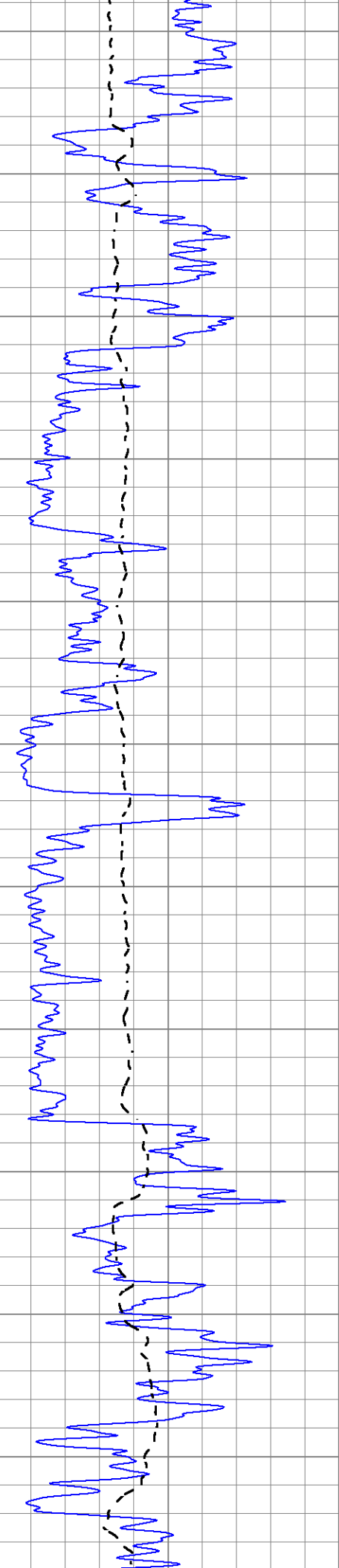
450
500
550
600
650
700
750
800
850
900
950



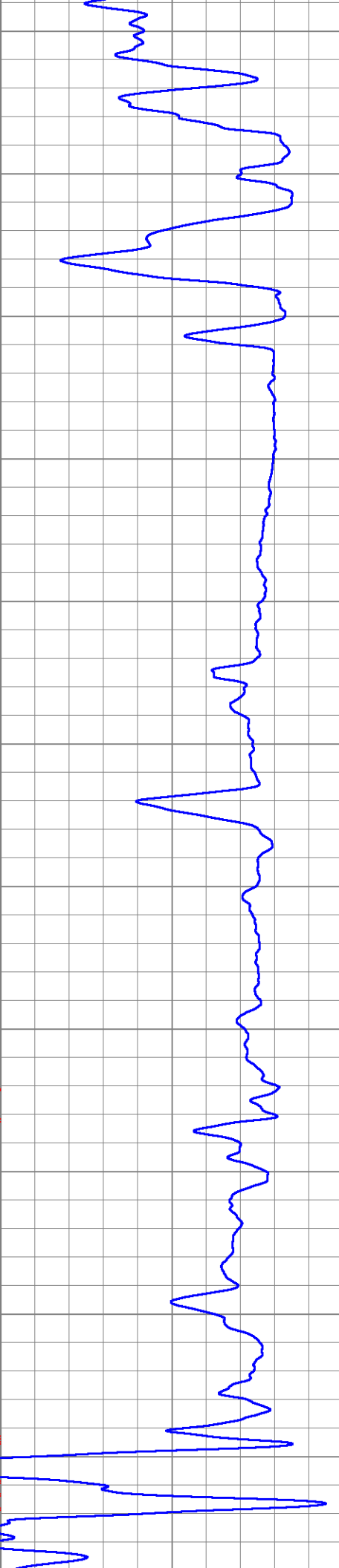
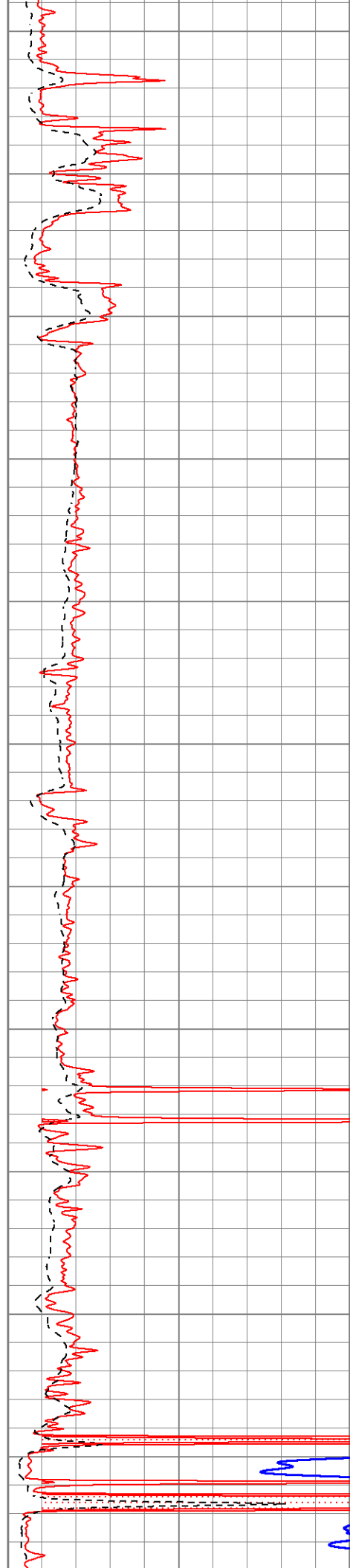


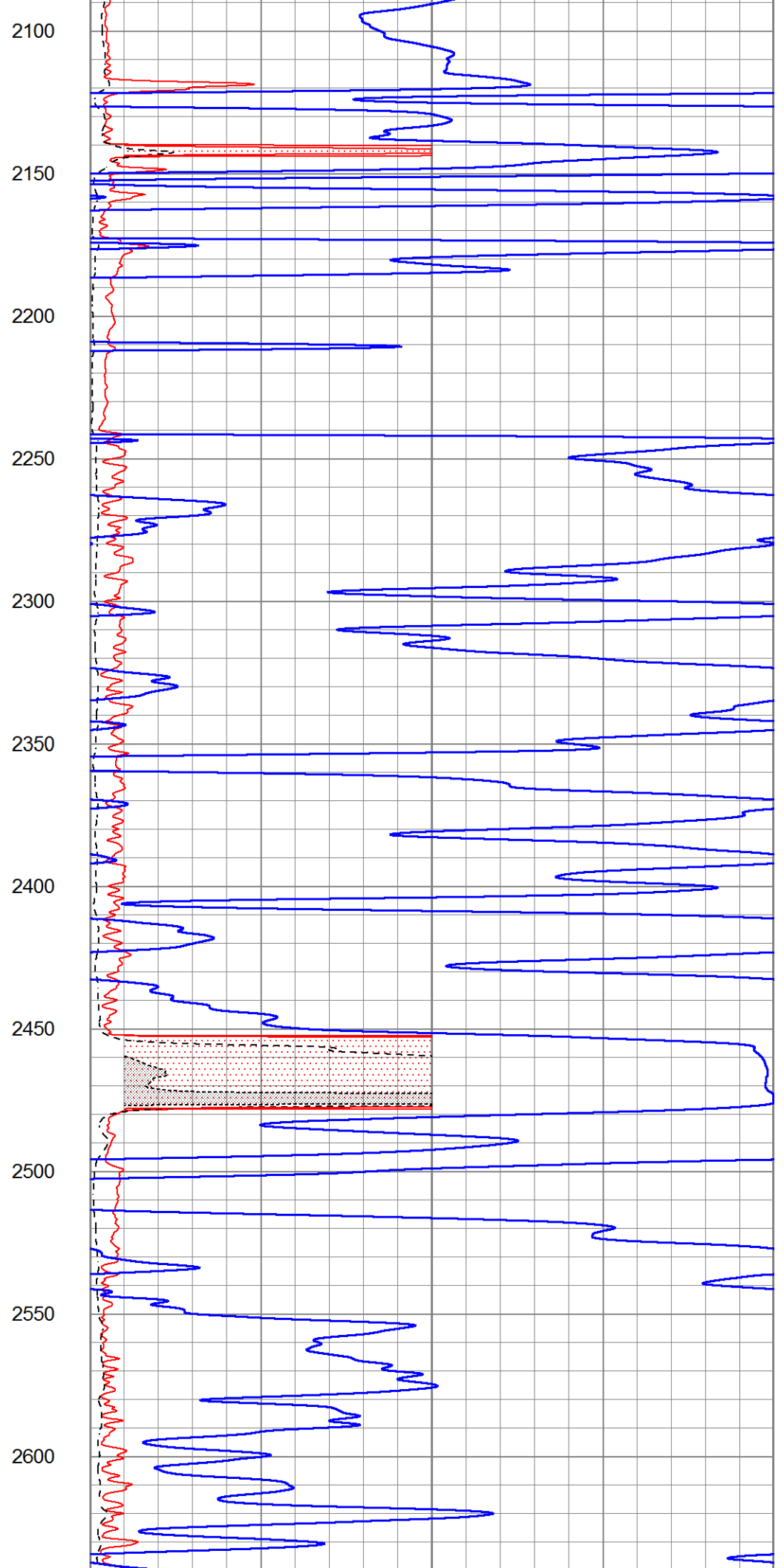
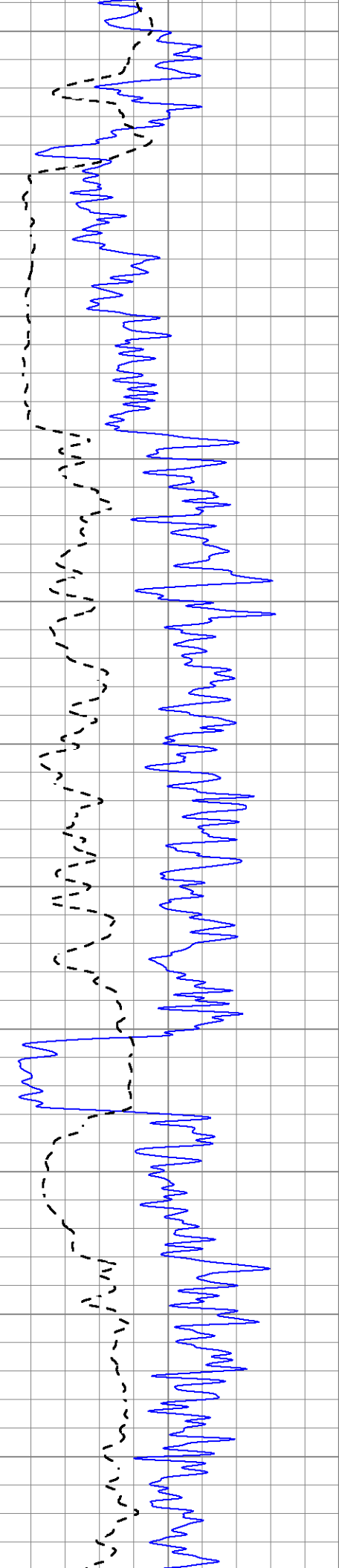
1000
1050
1100
1150
1200
1250
1300
1350
1400
1450
1500

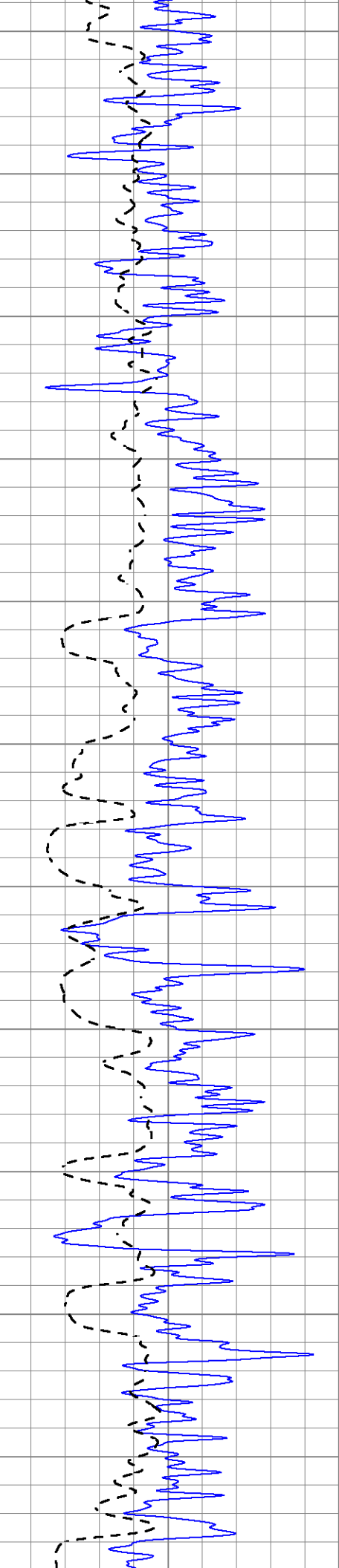




1550
1600
1650
1700
1750
1800
1850
1900
1950
2000
2050







2650

2700

2750

2800

2850

2900

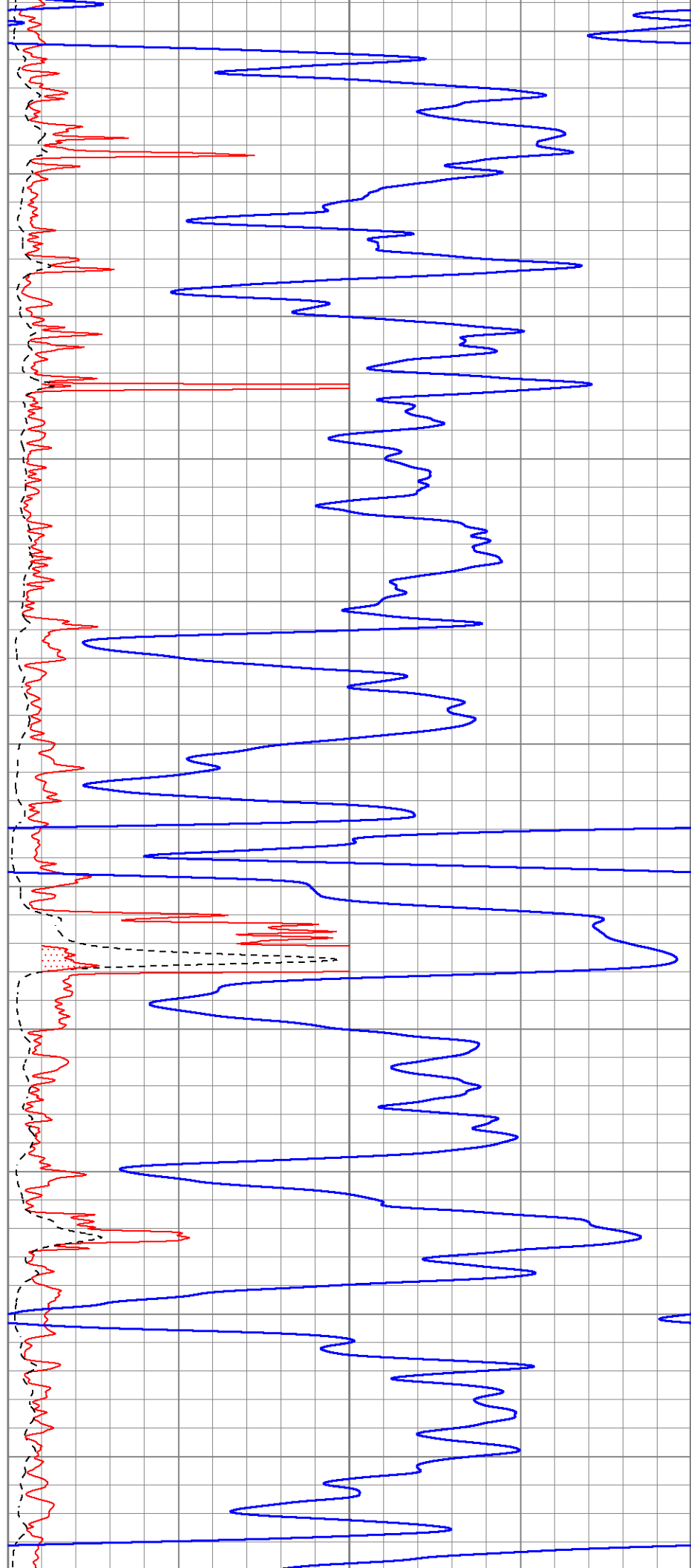
2950

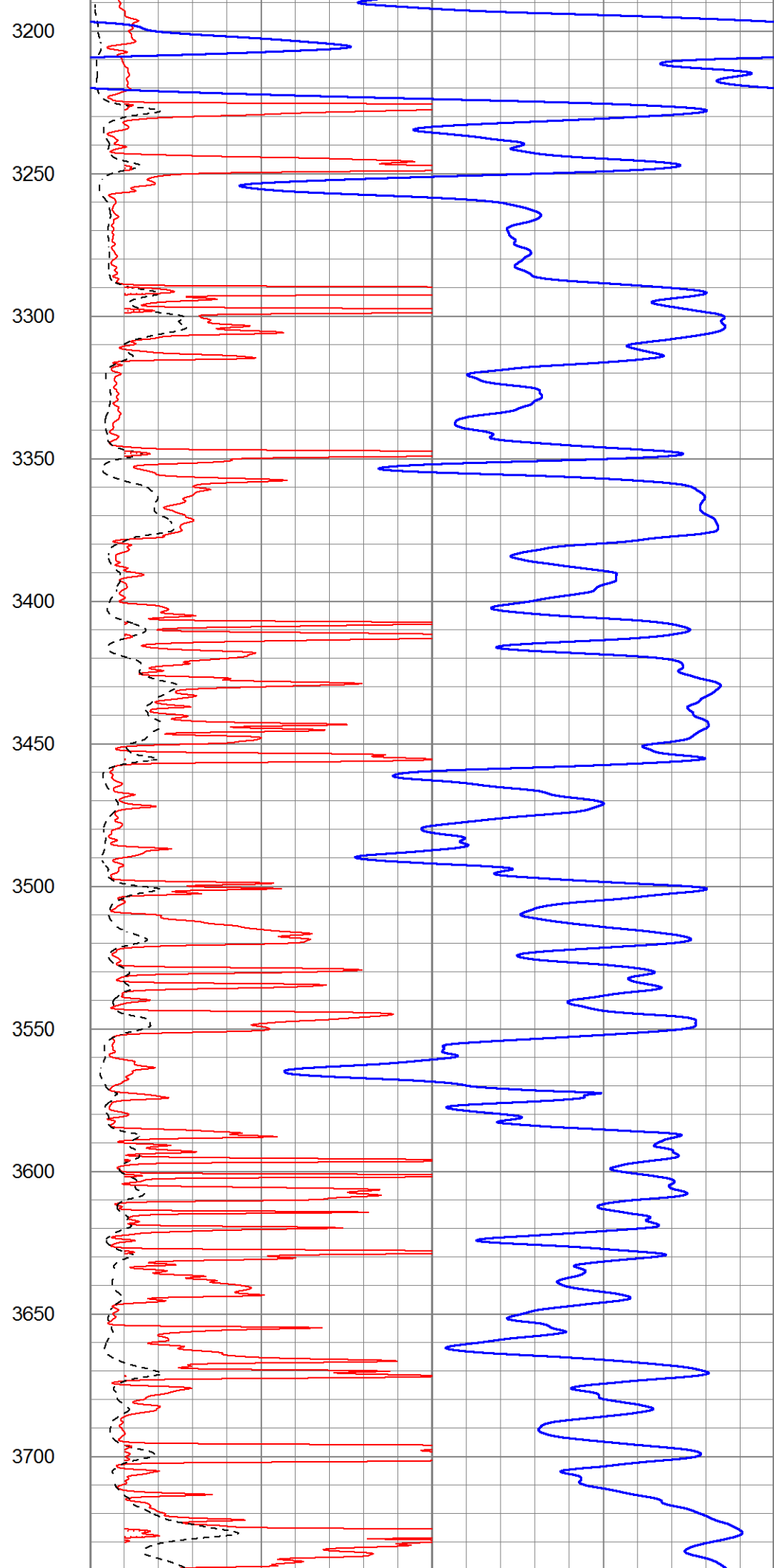
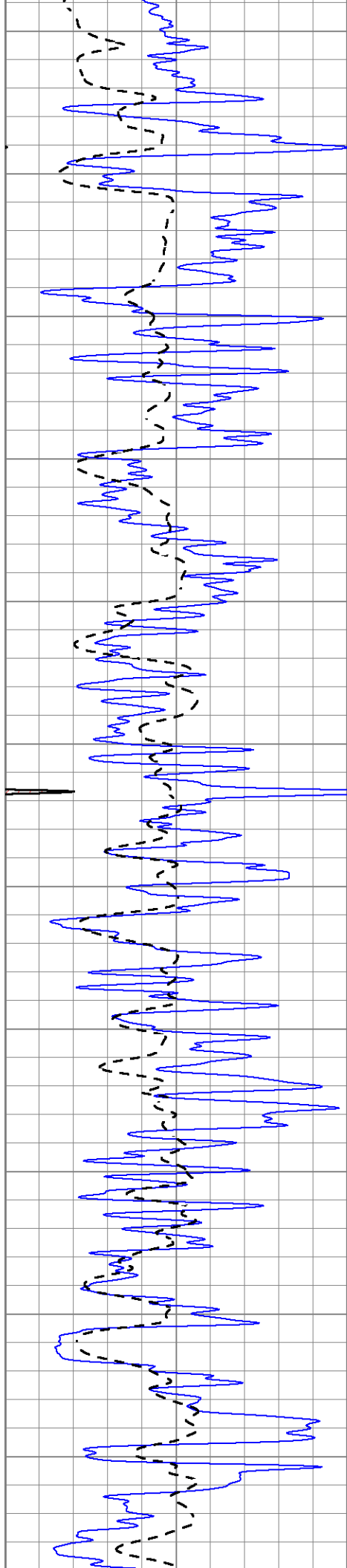
3000

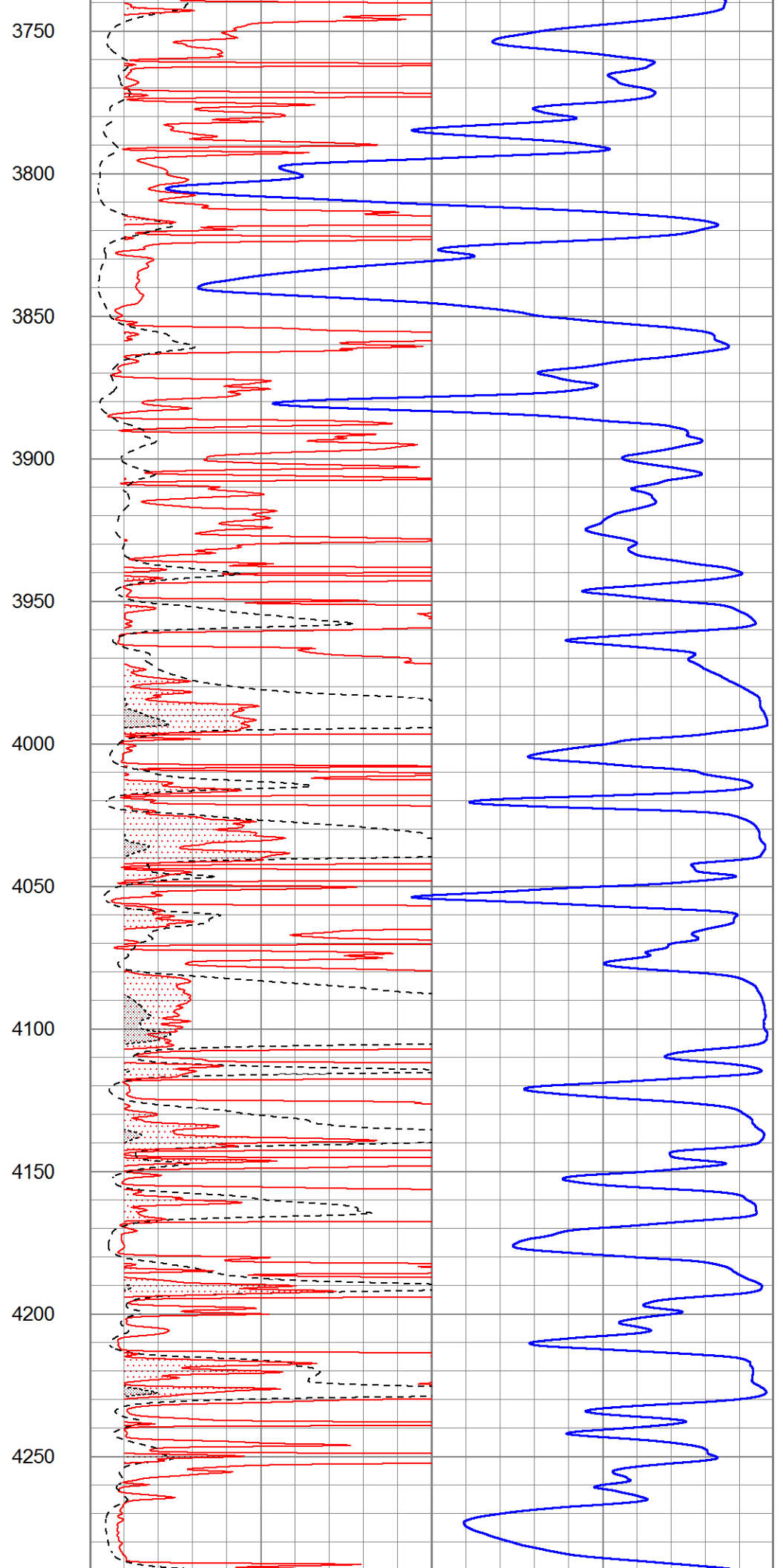
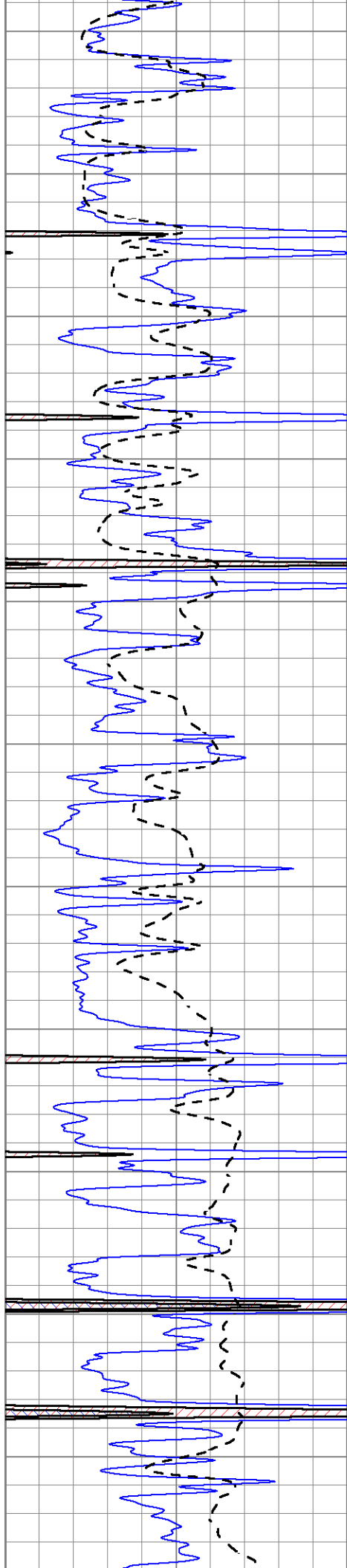
3050

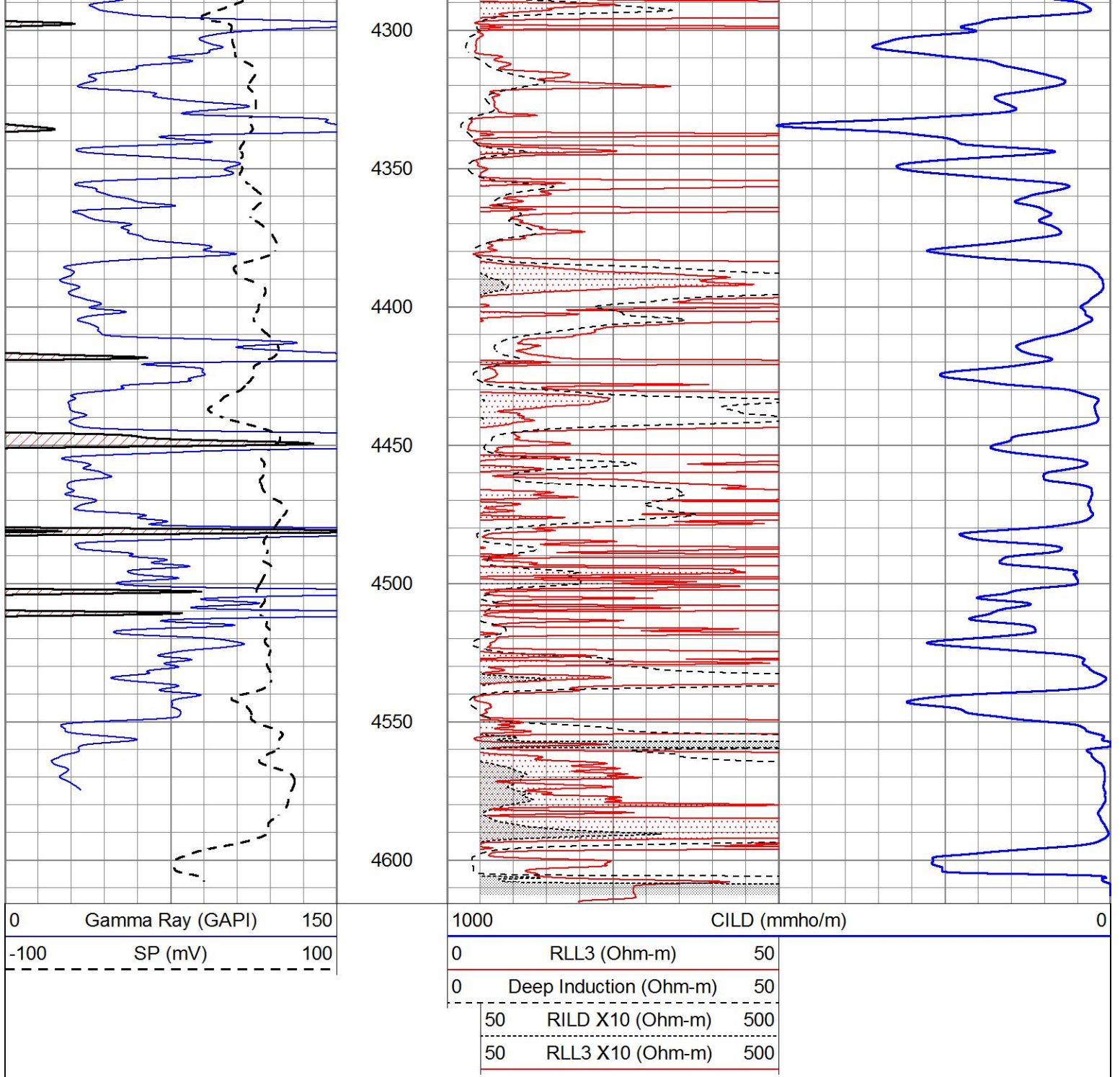
3100

3150





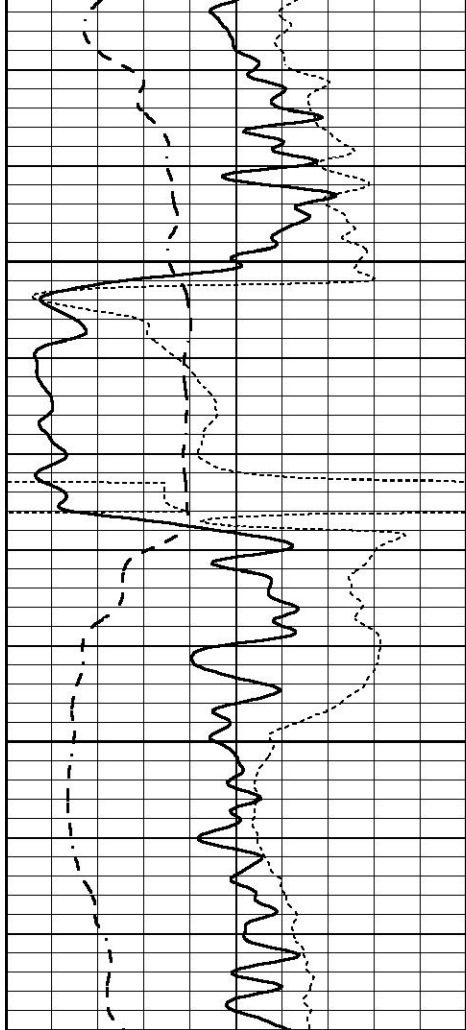




ANHYDRITE

Database File 6053pe.db
 Dataset Pathname pass3.2
 Presentation Format _dil
 Dataset Creation Thu Nov 18 22:00:54 2021
 Charted by Depth in Feet scaled 1:240

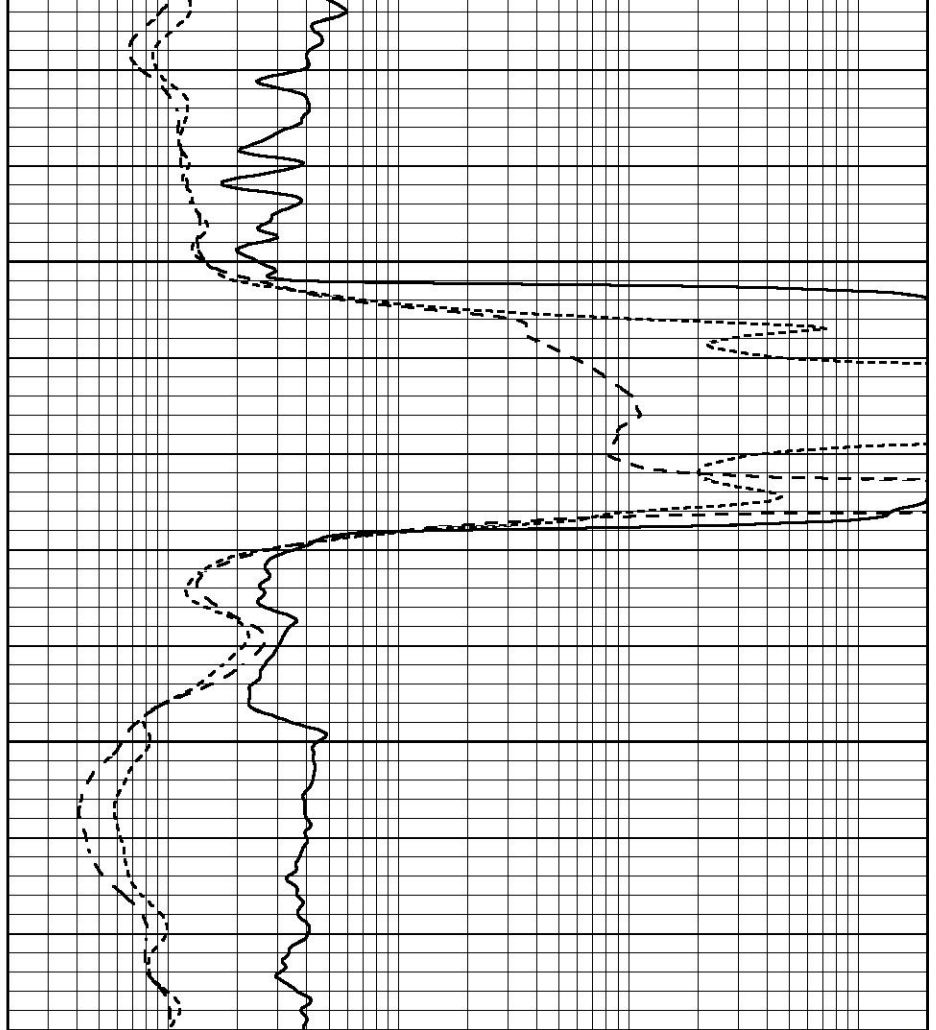
| | | | | | |
|------|------------------|-----|-----|--------------------------|------|
| 0 | GAMMA RAY (GAPI) | 150 | 0.2 | SHALLOW GUARD (Ohm-m) | 2000 |
| -100 | SP (mV) | 100 | 0.2 | MEDIUM INDUCTION (Ohm-m) | 2000 |
| -250 | Rxo/Rt | 50 | 0.2 | DEEP INDUCTION (Ohm-m) | 2000 |



2450

2500

| | | |
|------|------------------|-----|
| 0 | GAMMA RAY (GAPI) | 150 |
| -100 | SP (mV) | 100 |
| -250 | Rxo/Rt | 50 |



| | | |
|-----|--------------------------|------|
| 0.2 | SHALLOW GUARD (Ohm-m) | 2000 |
| 0.2 | MEDIUM INDUCTION (Ohm-m) | 2000 |
| 0.2 | DEEP INDUCTION (Ohm-m) | 2000 |

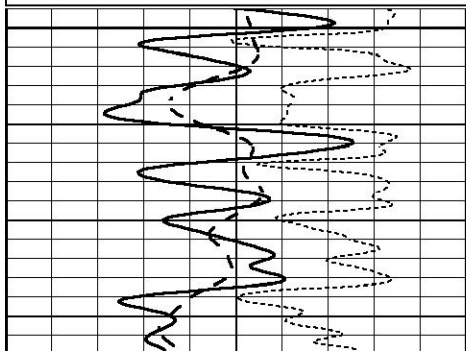


MAIN SECTION

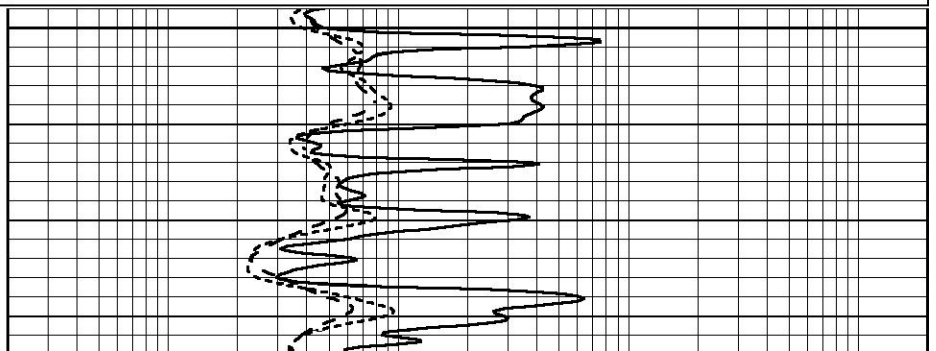
Database File 6053pe.db
 Dataset Pathname pass3.1
 Presentation Format _dil
 Dataset Creation Thu Nov 18 21:49:47 2021
 Charted by Depth in Feet scaled 1:240

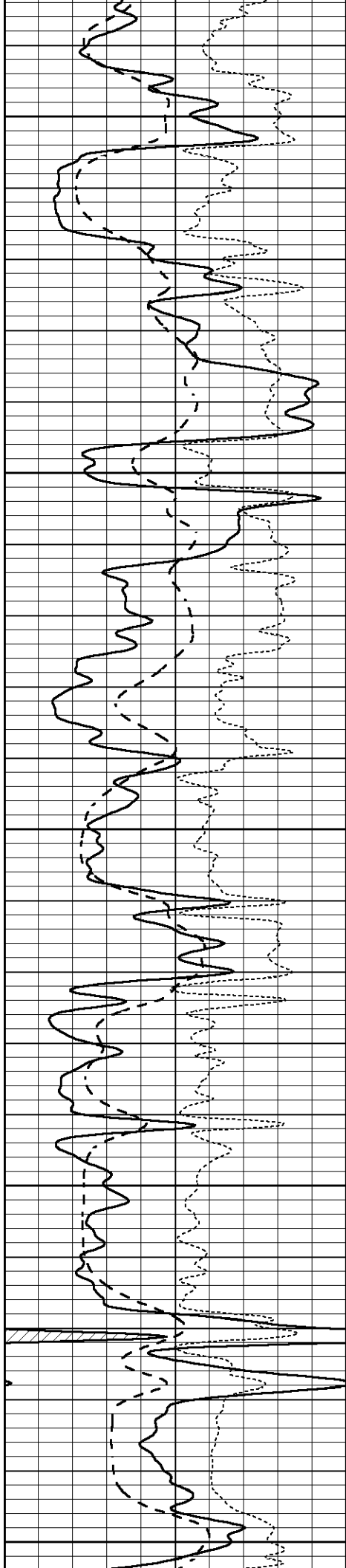
| | | |
|------|------------------|-----|
| 0 | GAMMA RAY (GAPI) | 150 |
| -100 | SP (mV) | 100 |
| -250 | Rxo/Rt | 50 |

| | | |
|-----|--------------------------|------|
| 0.2 | SHALLOW GUARD (Ohm-m) | 2000 |
| 0.2 | MEDIUM INDUCTION (Ohm-m) | 2000 |
| 0.2 | DEEP INDUCTION (Ohm-m) | 2000 |



3600





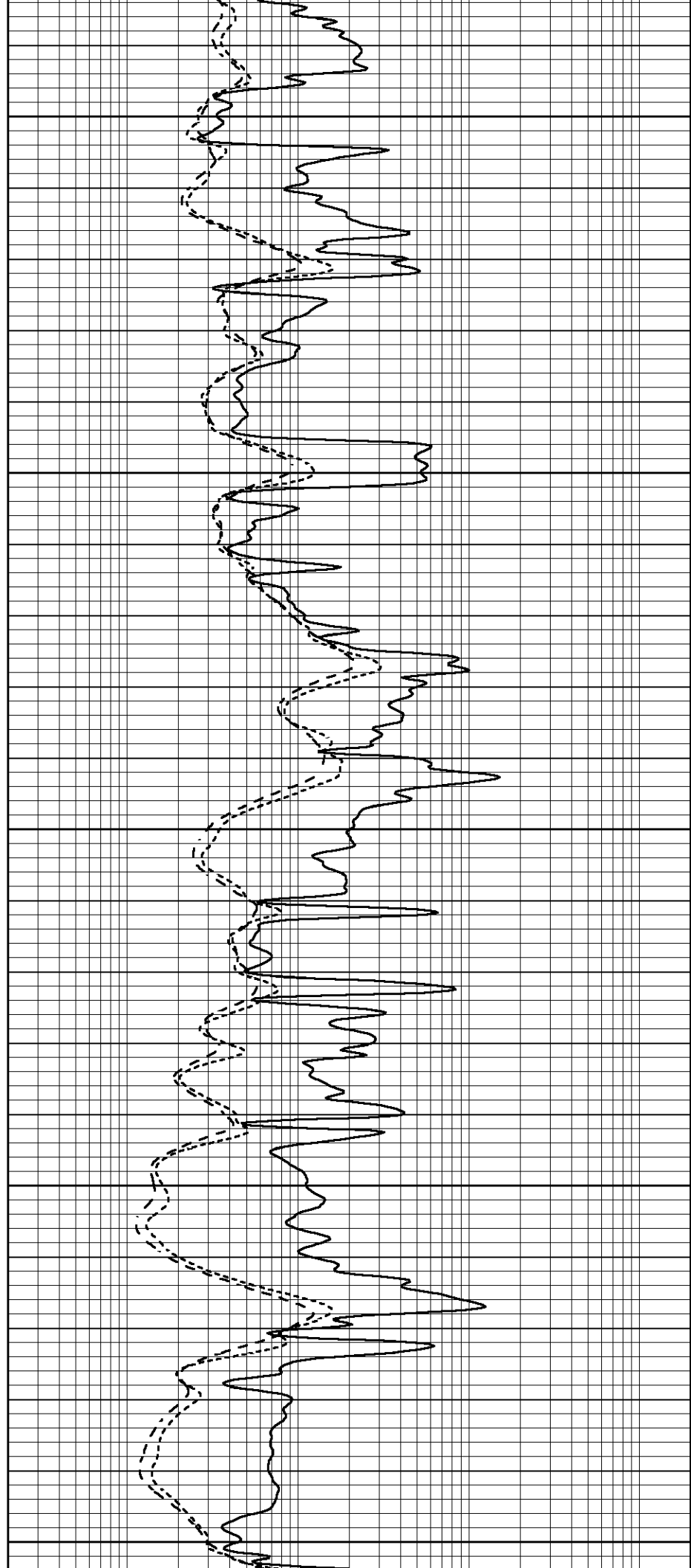
3650

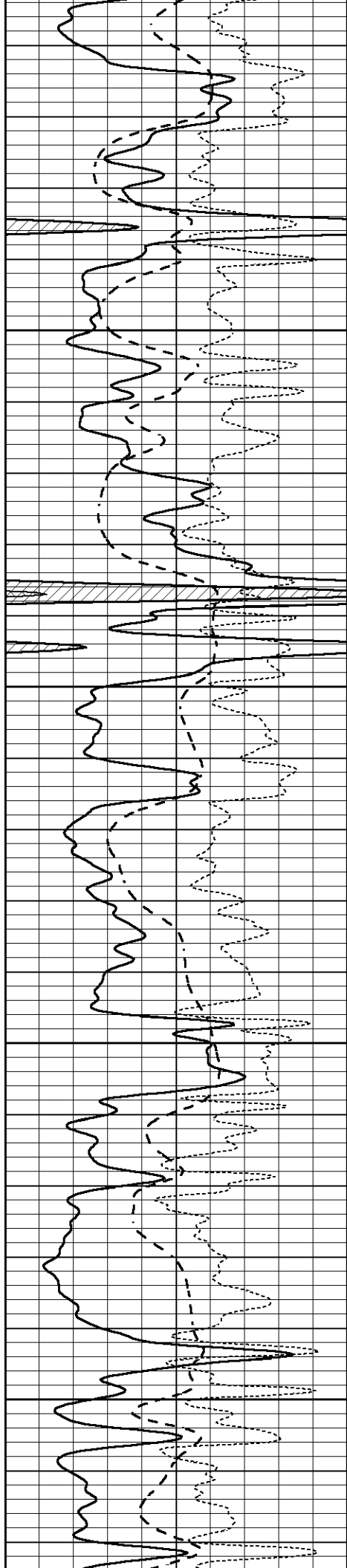
3700

3750

3800

3850



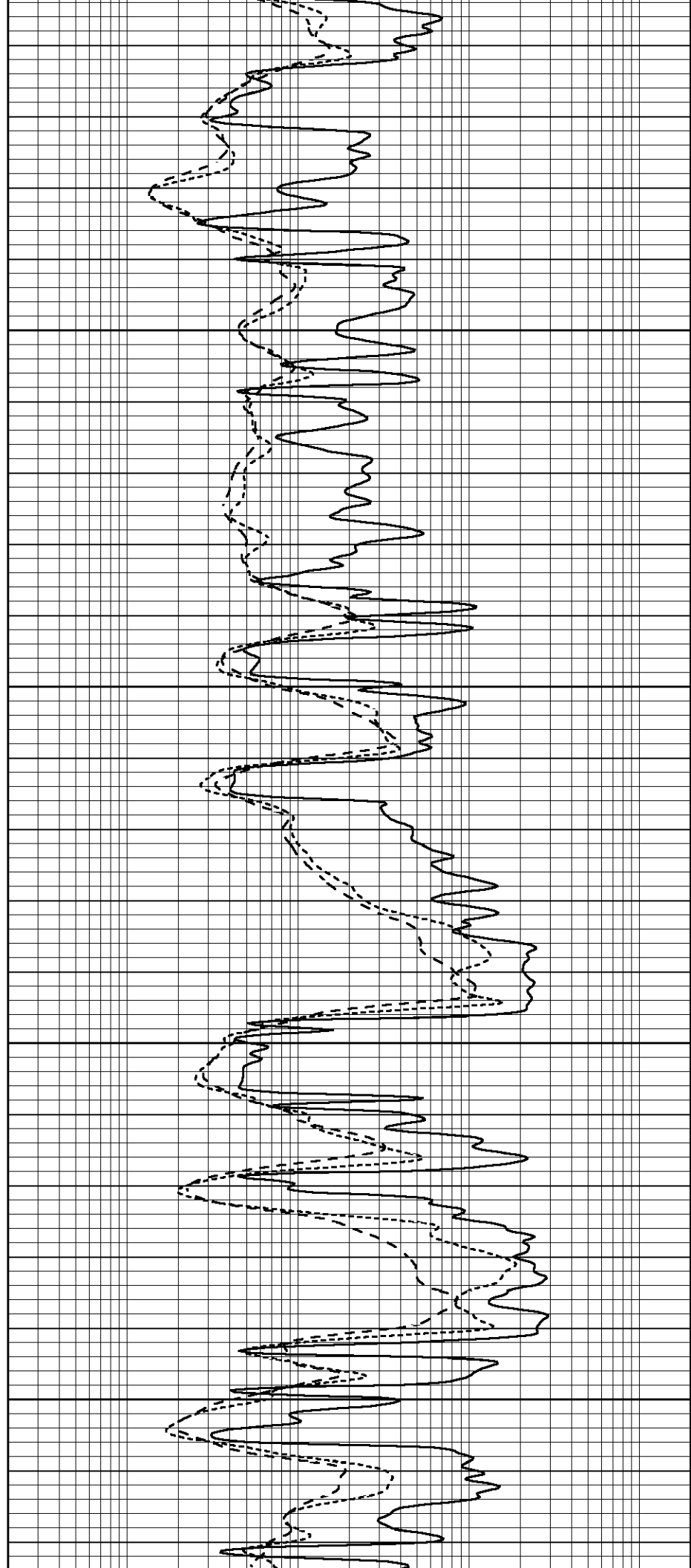


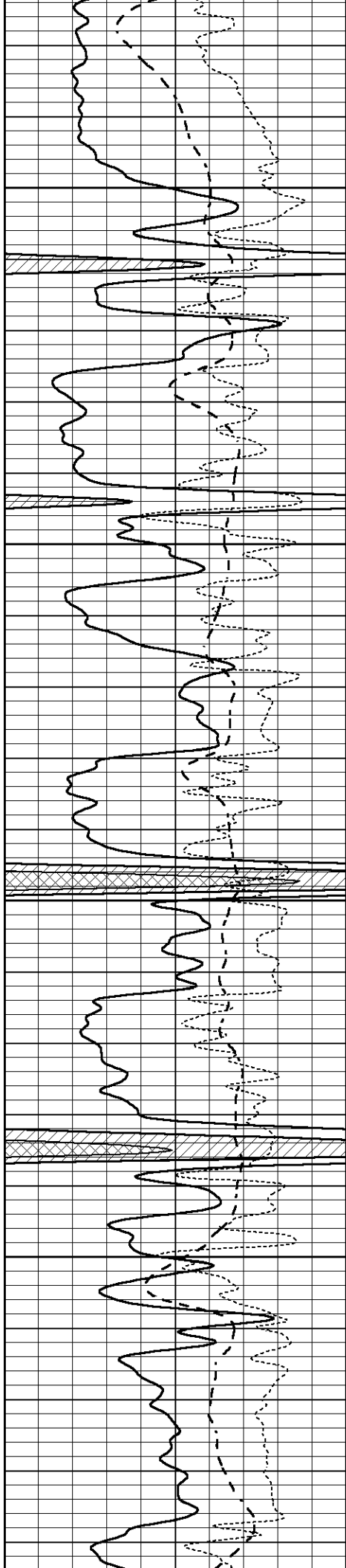
3900

3950

4000

4050



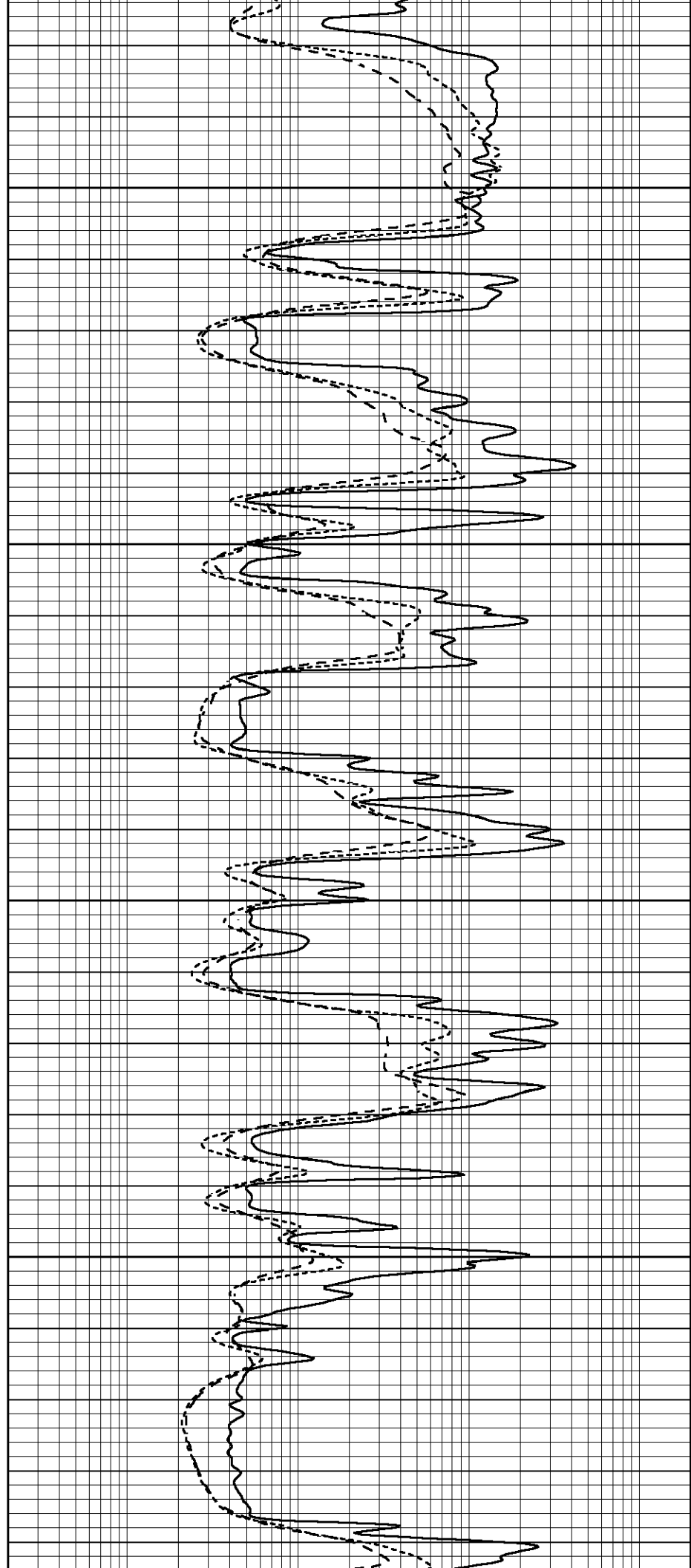


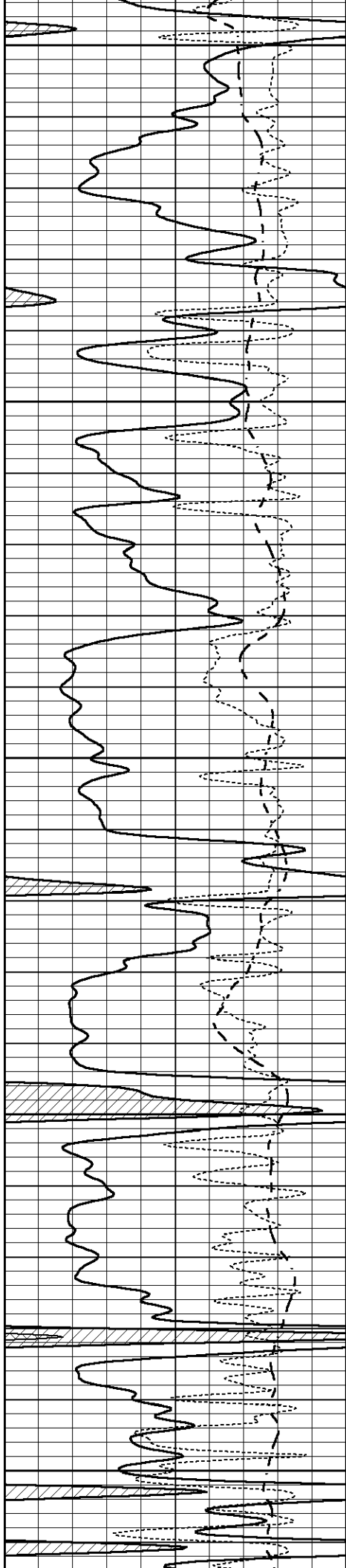
4100

4150

4200

4250





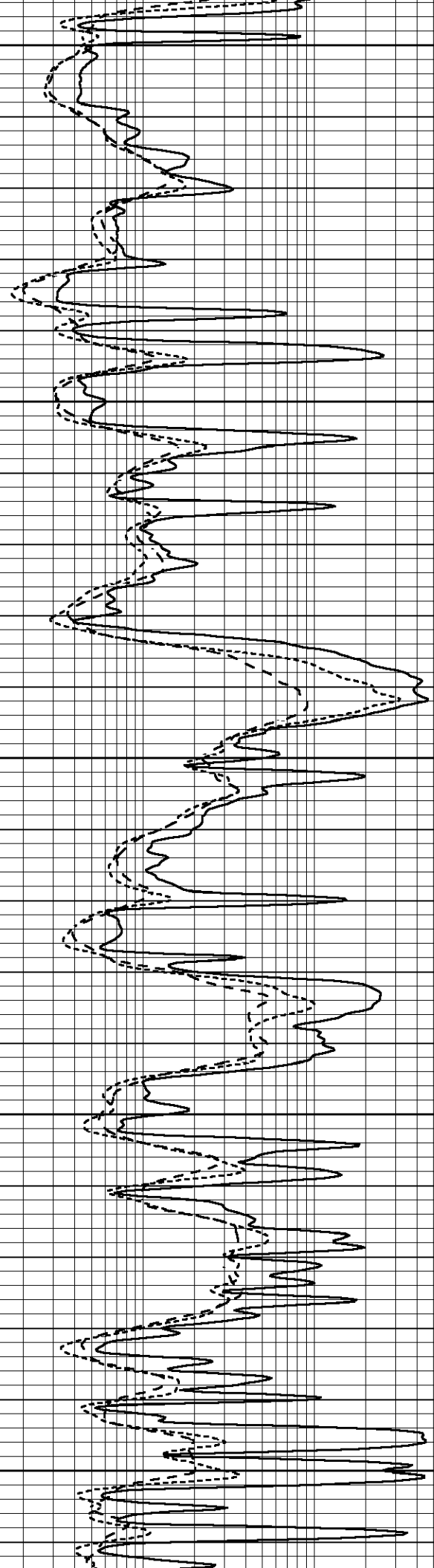
4300

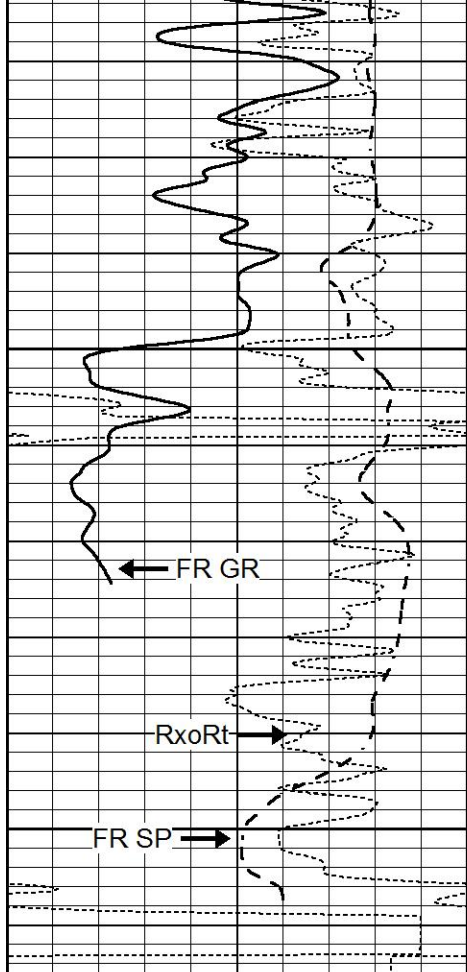
4350

4400

4450

4500





4550

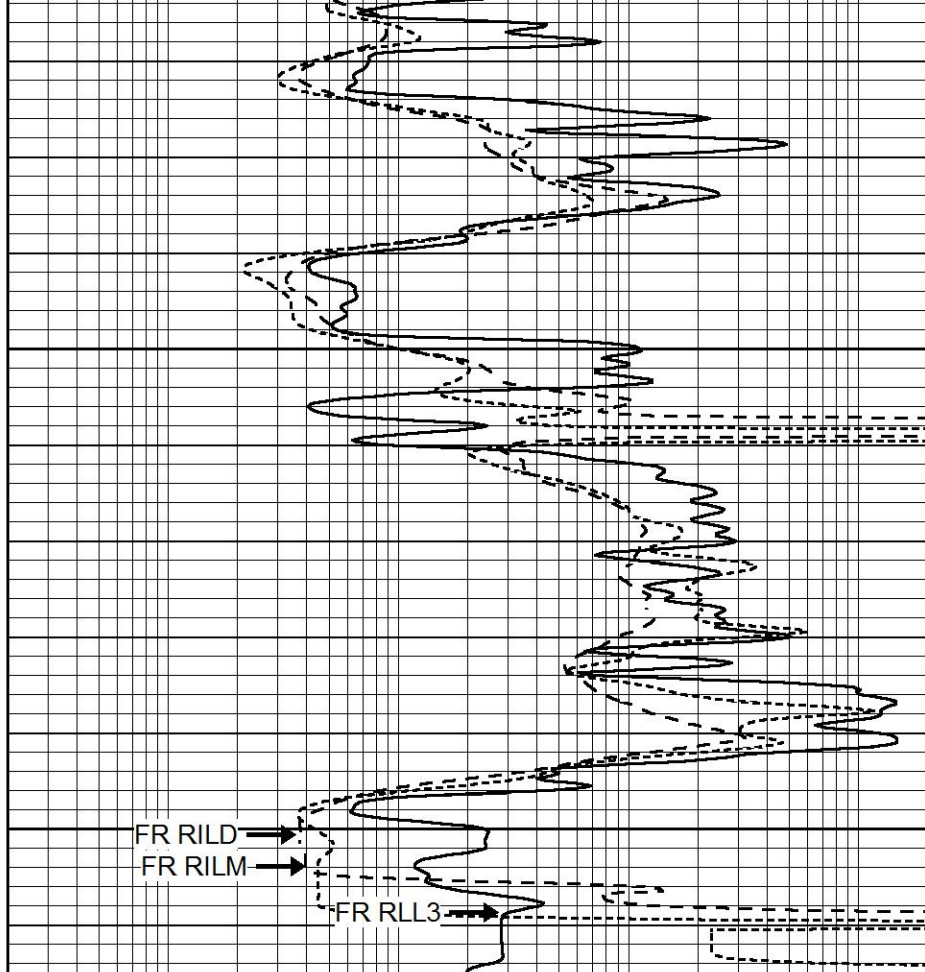
← FR GR

RxoRt →

FR SP →

LTD 4611

| | | |
|------|------------------|-----|
| 0 | GAMMA RAY (GAPI) | 150 |
| -100 | SP (mV) | 100 |
| -250 | Rxo/Rt | 50 |



FR RILD →

FR RILM →

FR RLL3 →

| | | |
|-----|--------------------------|------|
| 0.2 | SHALLOW GUARD (Ohm-m) | 2000 |
| 0.2 | MEDIUM INDUCTION (Ohm-m) | 2000 |
| 0.2 | DEEP INDUCTION (Ohm-m) | 2000 |

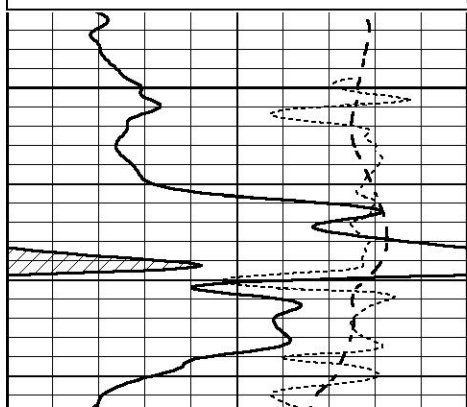


REPEAT SECTION

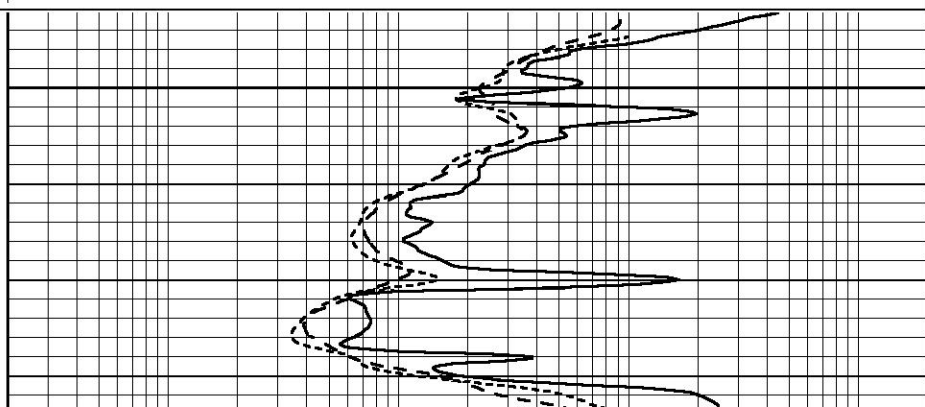
Database File 6053pe.db
 Dataset Pathname pass2.1
 Presentation Format _dil
 Dataset Creation Thu Nov 18 21:48:28 2021
 Charted by Depth in Feet scaled 1:240

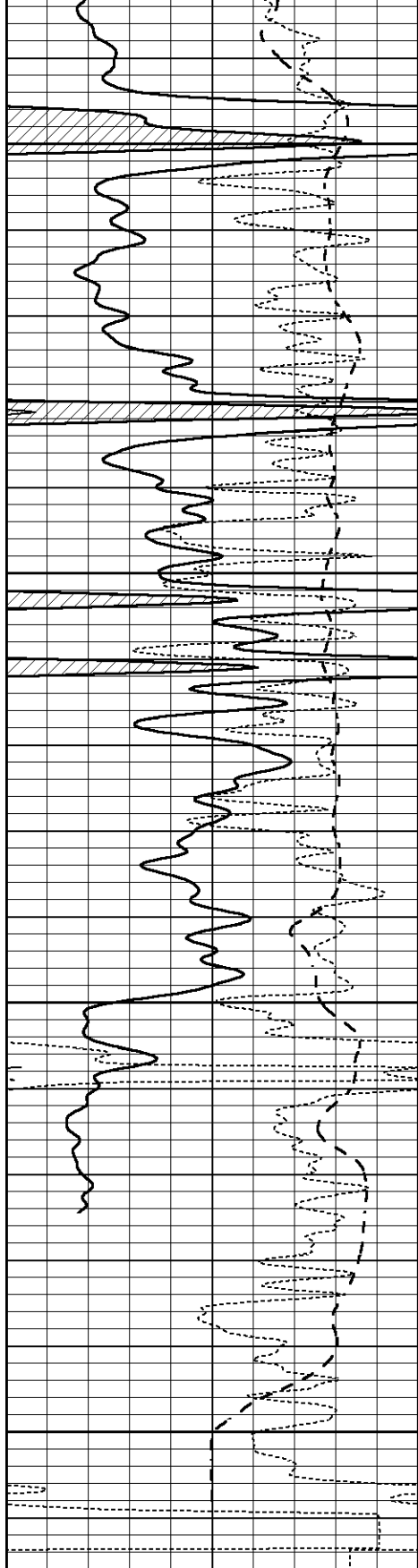
| | | |
|------|------------------|-----|
| 0 | GAMMA RAY (GAPI) | 150 |
| -100 | SP (mV) | 100 |
| -250 | Rxo/Rt | 50 |

| | | |
|-----|--------------------------|------|
| 0.2 | SHALLOW GUARD (Ohm-m) | 2000 |
| 0.2 | MEDIUM INDUCTION (Ohm-m) | 2000 |
| 0.2 | DEEP INDUCTION (Ohm-m) | 2000 |



4400





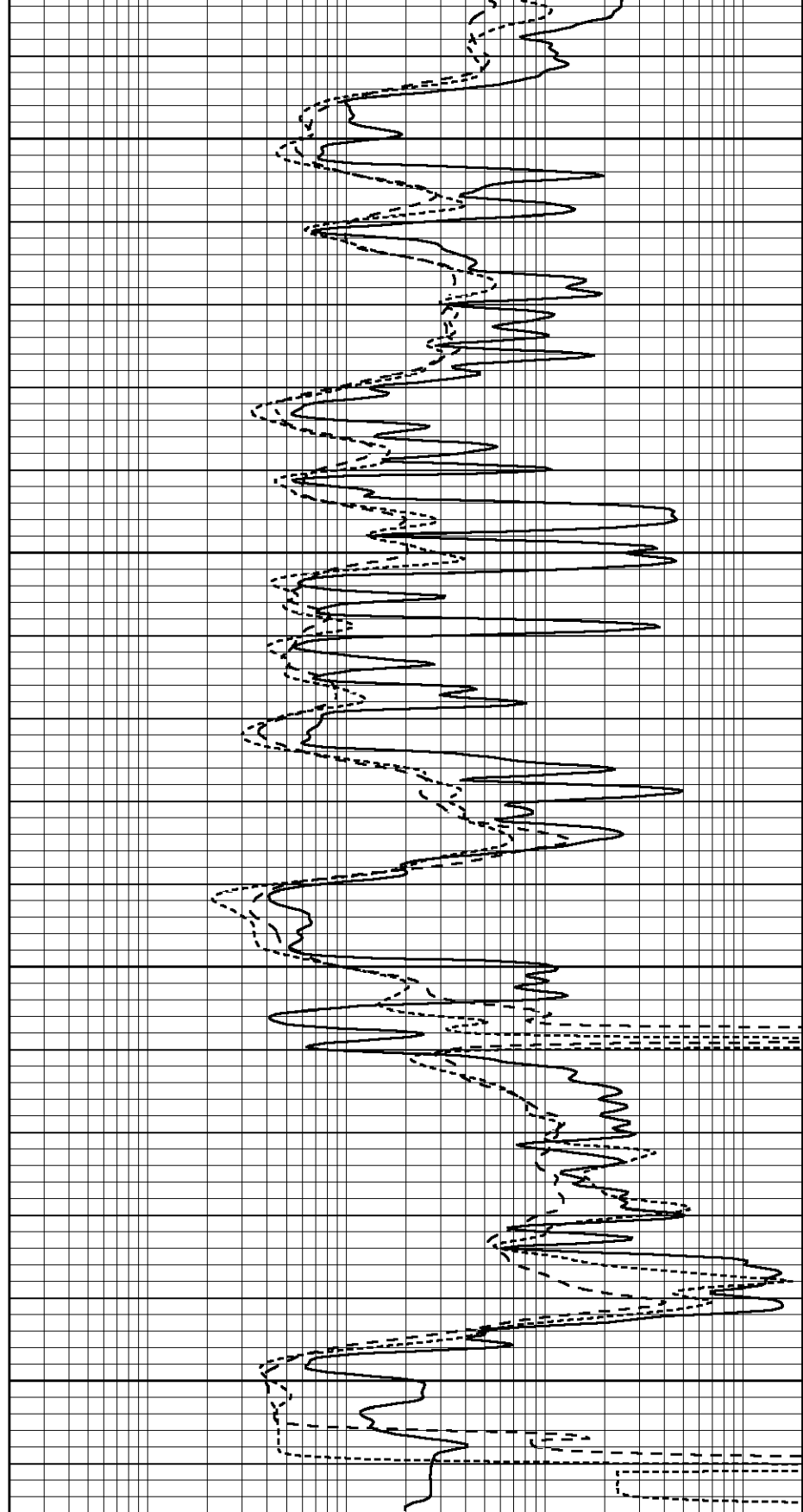
4450

4500

4550

4600

| | | |
|------|------------------|-----|
| 0 | GAMMA RAY (GAPI) | 150 |
| -100 | SP (mV) | 100 |
| -250 | Rxo/Rt | 50 |



| | | |
|-----|--------------------------|------|
| 0.2 | SHALLOW GUARD (Ohm-m) | 2000 |
| 0.2 | MEDIUM INDUCTION (Ohm-m) | 2000 |
| 0.2 | DEEP INDUCTION (Ohm-m) | 2000 |