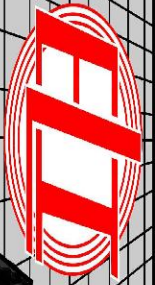


MICRO  
LOG



Company SHAKESPEARE OIL COMPANY, INC.

Well CALE #1-27

Field

County GOVE State KANSAS

Location: API #: 15-063-22391-0000

1070' FNL & 2280' FWL

SEC 27 TWP 11S RGE 31W

Permanent Datum GROUND LEVEL Elevation 2939  
Log Measured From KELLY BUSHING 11' A.G.L.  
Drilling Measured From KELLY BUSHING

Other Services  
CDL/CNL/PE  
DIL  
Elevation  
K.B. 2950  
D.F. 2948  
G.L. 2939

Date	11/18/21
Run Number	TWO
Depth Driller	4610
Depth Logger	4611
Bottom Logged Interval	4609
Top Log Interval	3600
Casing Driller	8 5/8" @ 269
Casing Logger	269
Bit Size	7 7/8
Type Fluid in Hole	CHEMICAL MUD
Density / Viscosity	9.4/56
pH / Fluid Loss	11.0/6.4
Source of Sample	FLOWLINE
Rm @ Meas. Temp	1.4 @ 60F
Rmf @ Meas. Temp	1.05 @ 60F
Rmc @ Meas. Temp	1.68 @ 60F
Source of Rmf / Rmc	MEASUREMENT
Rm @ BHT	0.69 @ 121F
Time Circulation Stopped	2 HOURS
Time Logger on Bottom	////
Maximum Recorded Temperature	121F
Equipment Number	3802
Location	HAYS, KANSAS
Recorded By	JASON CAPPELLUCCI
Witnessed By	KENT MATSON

<<< Fold Here >>>

All interpretations are opinions based on inferences from electrical or other measurements and we cannot and do not guarantee the accuracy or correctness of any interpretation, and we shall not, except in the case of gross or willful negligence on our part, be liable or responsible for any loss, costs, damages, or expenses incurred or sustained by anyone resulting from any interpretation made by any of our officers, agents or employees. These interpretations are also subject to our general terms and conditions set out in our current Price Schedule.

Comments

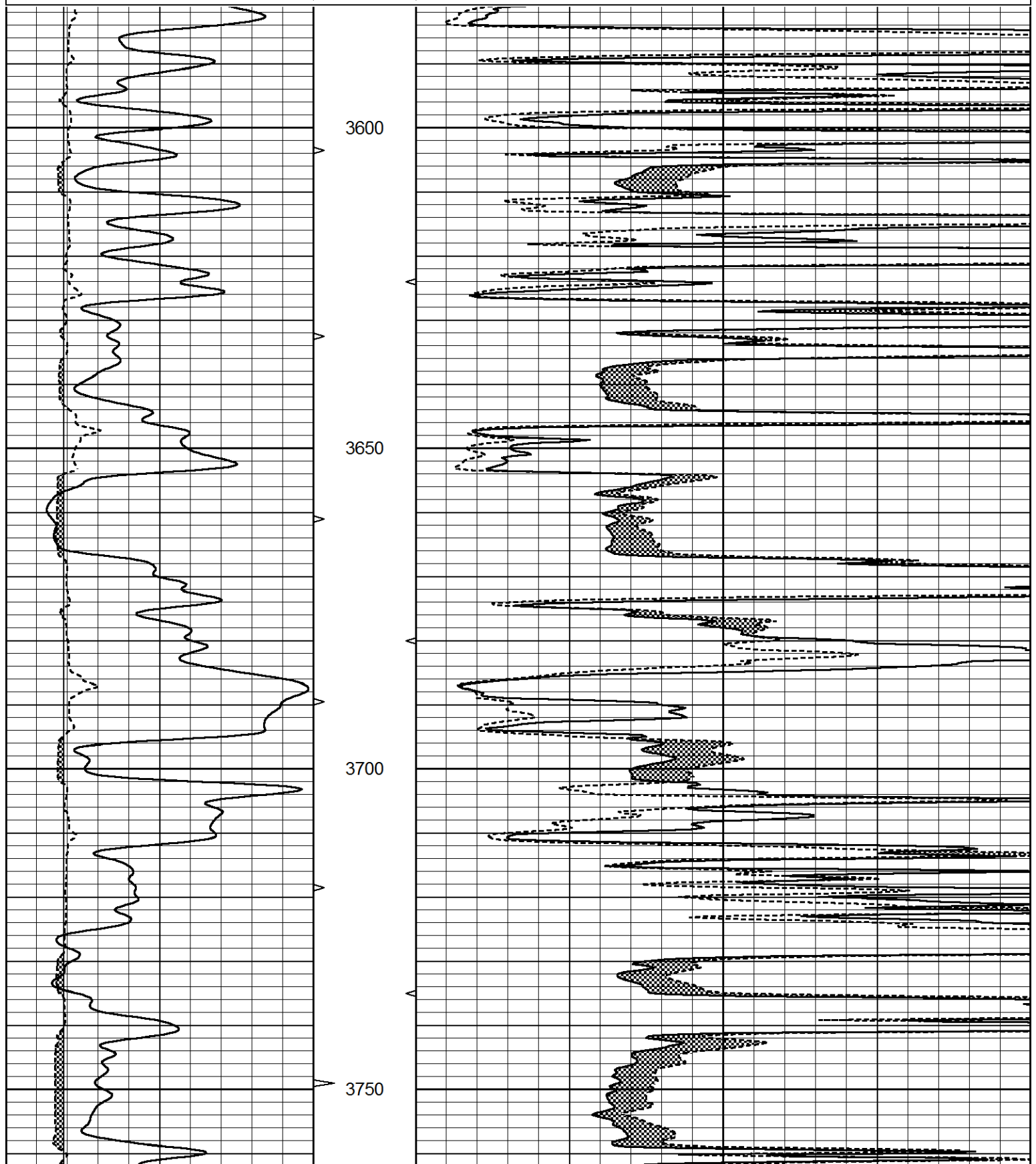
THANK YOU FOR USING ELI WIRELINE SERVICES, HAYS, KS. ( 785 ) 628-6395  
DIRECTIONS  
I 70 WEST TO CAMPUS EXIT - 2 1/2 SOUTH TO GOVE AA RD. - 1/2 WEST - SOUTH INTO

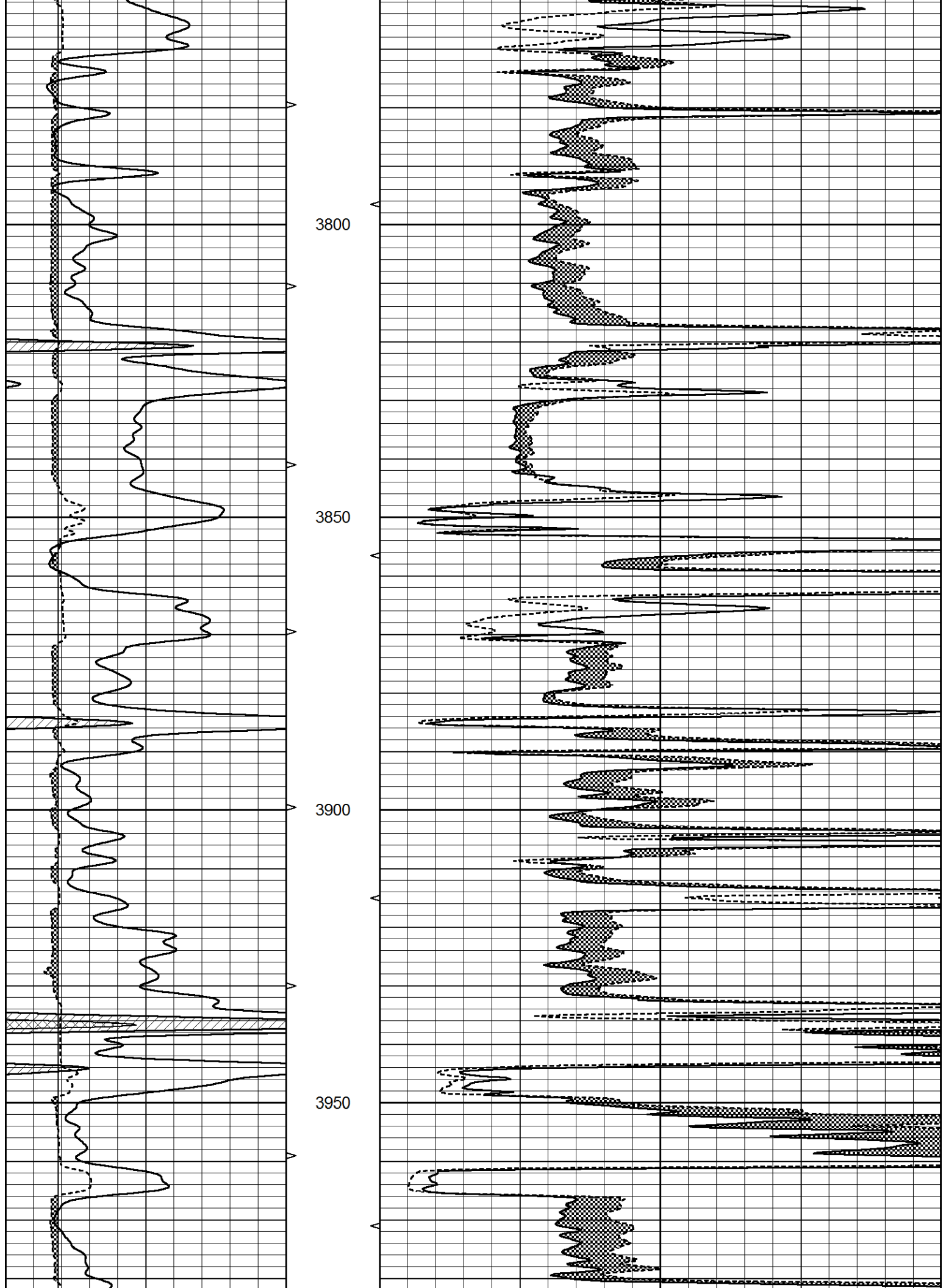


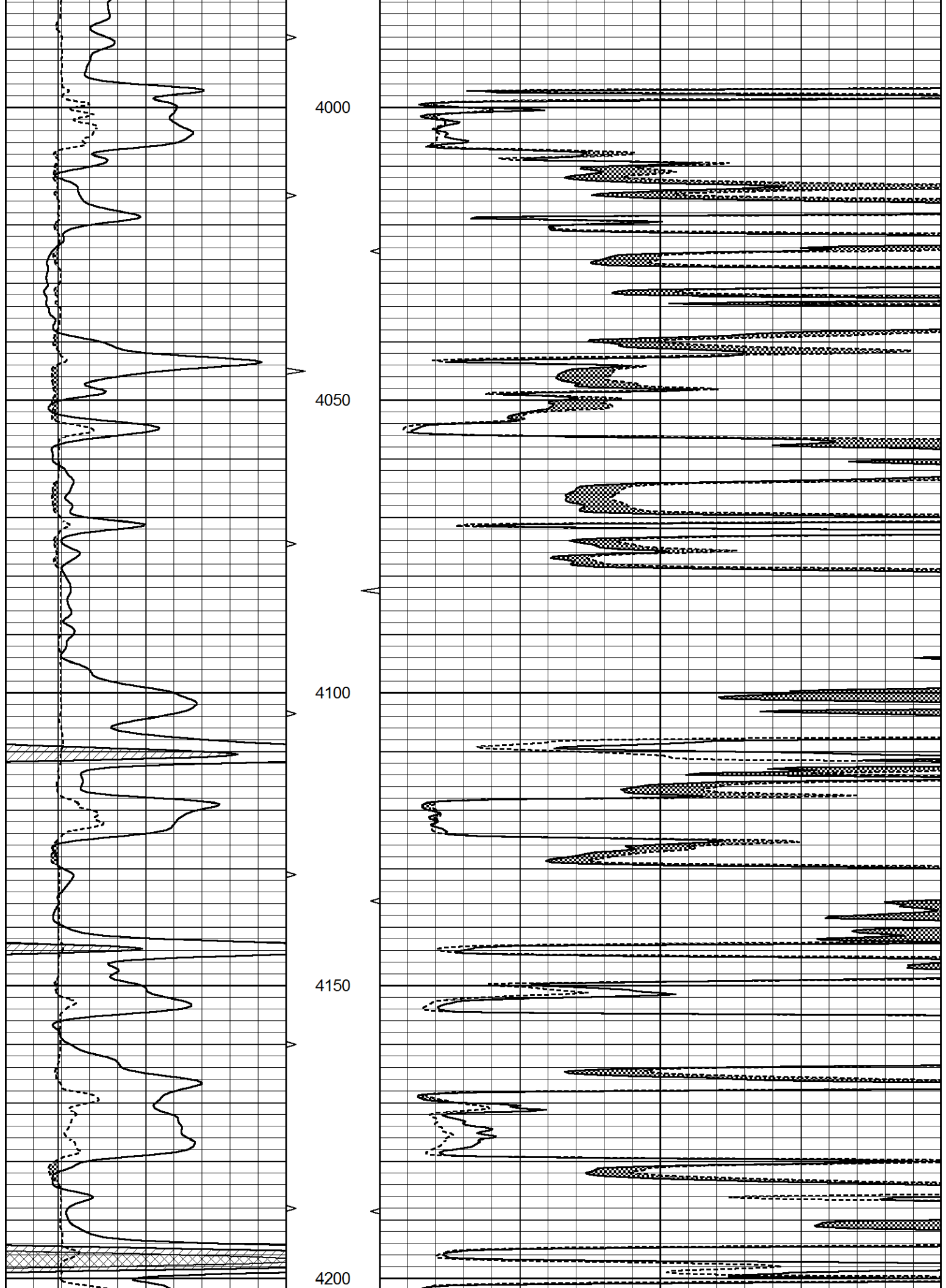
MAIN SECTION

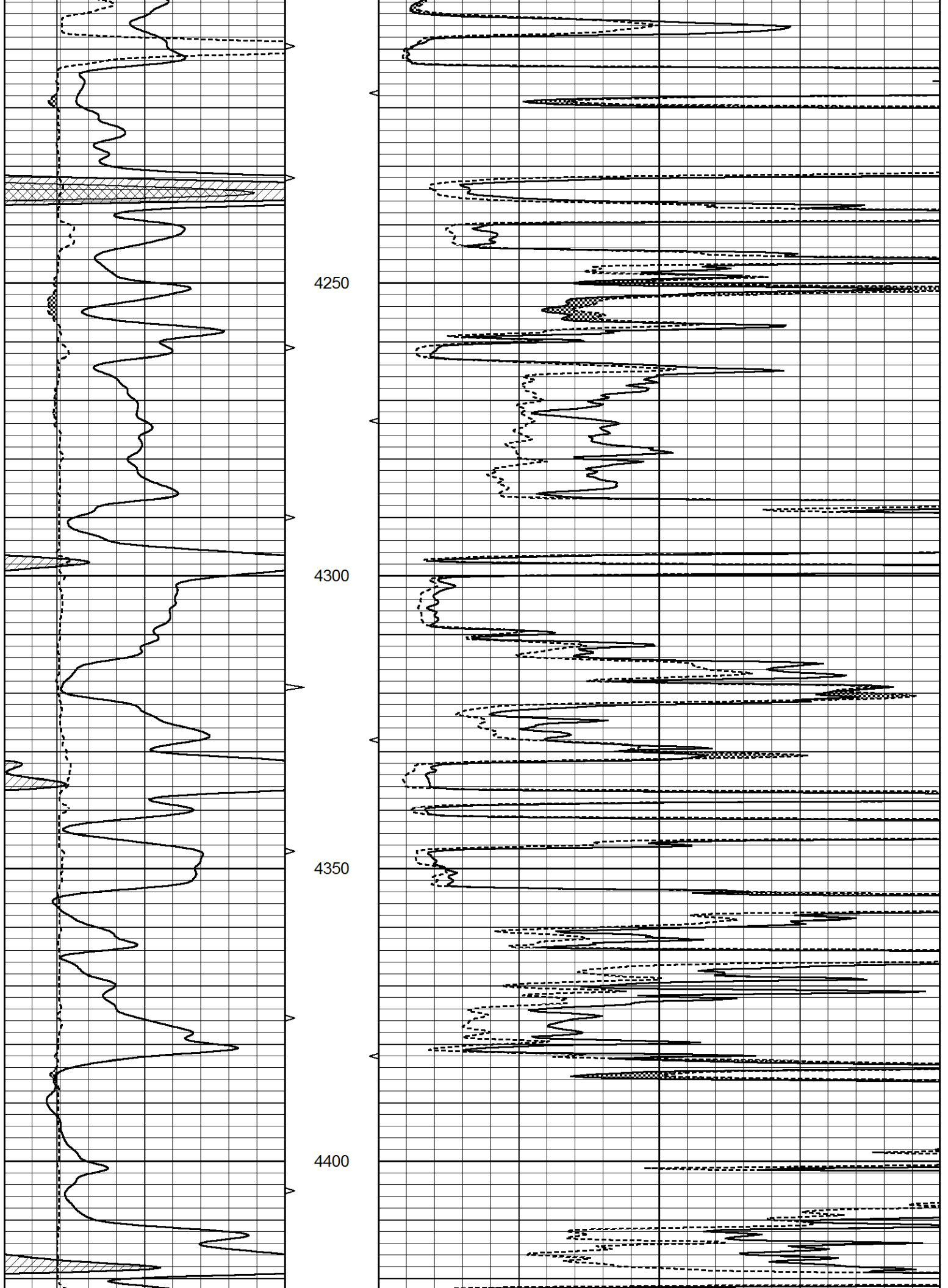
Database File 6053pe.db  
 Dataset Pathname pass6.1  
 Presentation Format \_micro  
 Dataset Creation Thu Nov 18 23:56:52 2021  
 Charted by Depth in Feet scaled 1:240

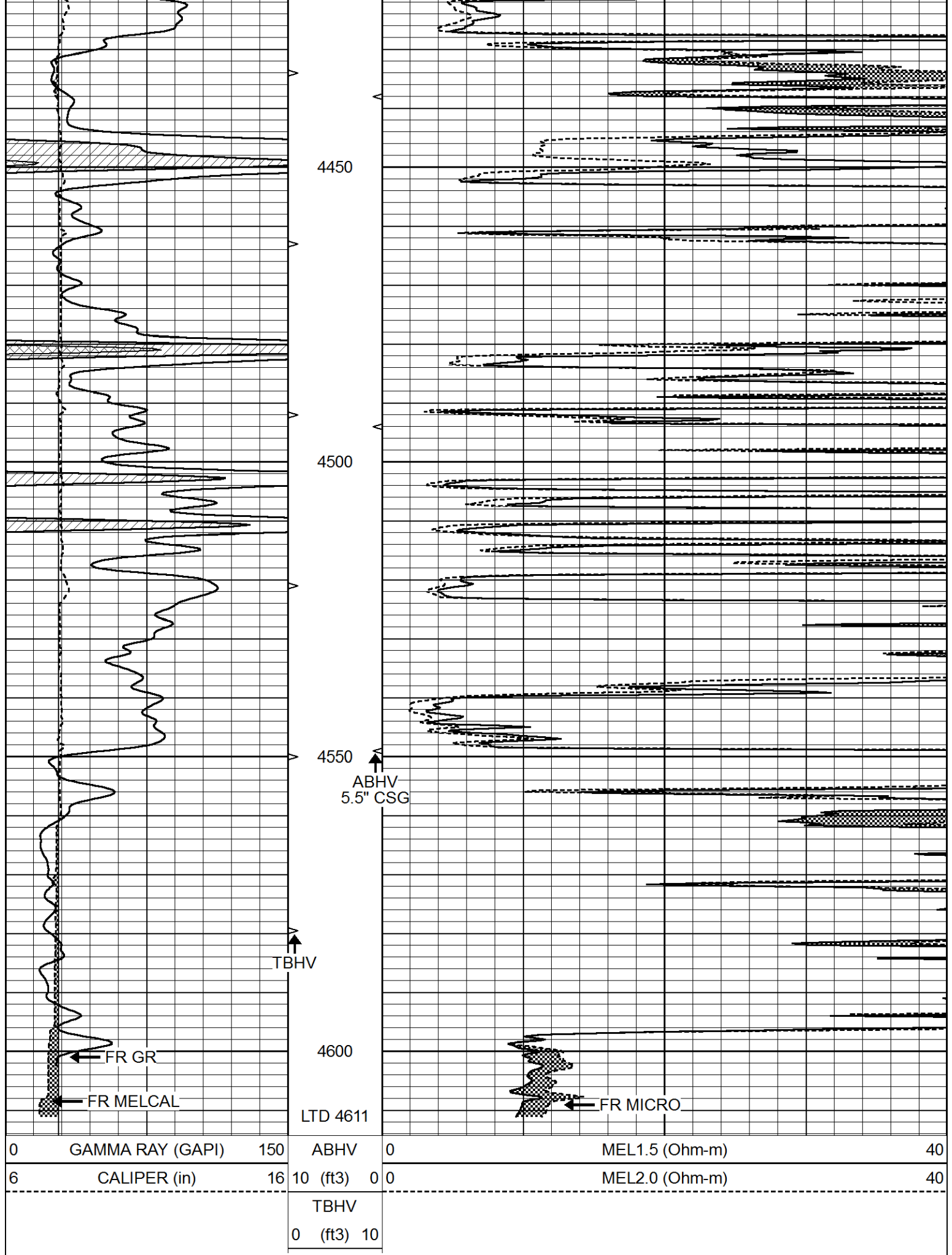
0	GAMMA RAY (GAPI)	150	ABHV	0	MEL1.5 (Ohm-m)	40
6	CALIPER (in)	16	10 (ft3)	0	MEL2.0 (Ohm-m)	40
			TBHV			
			0 (ft3)	10		









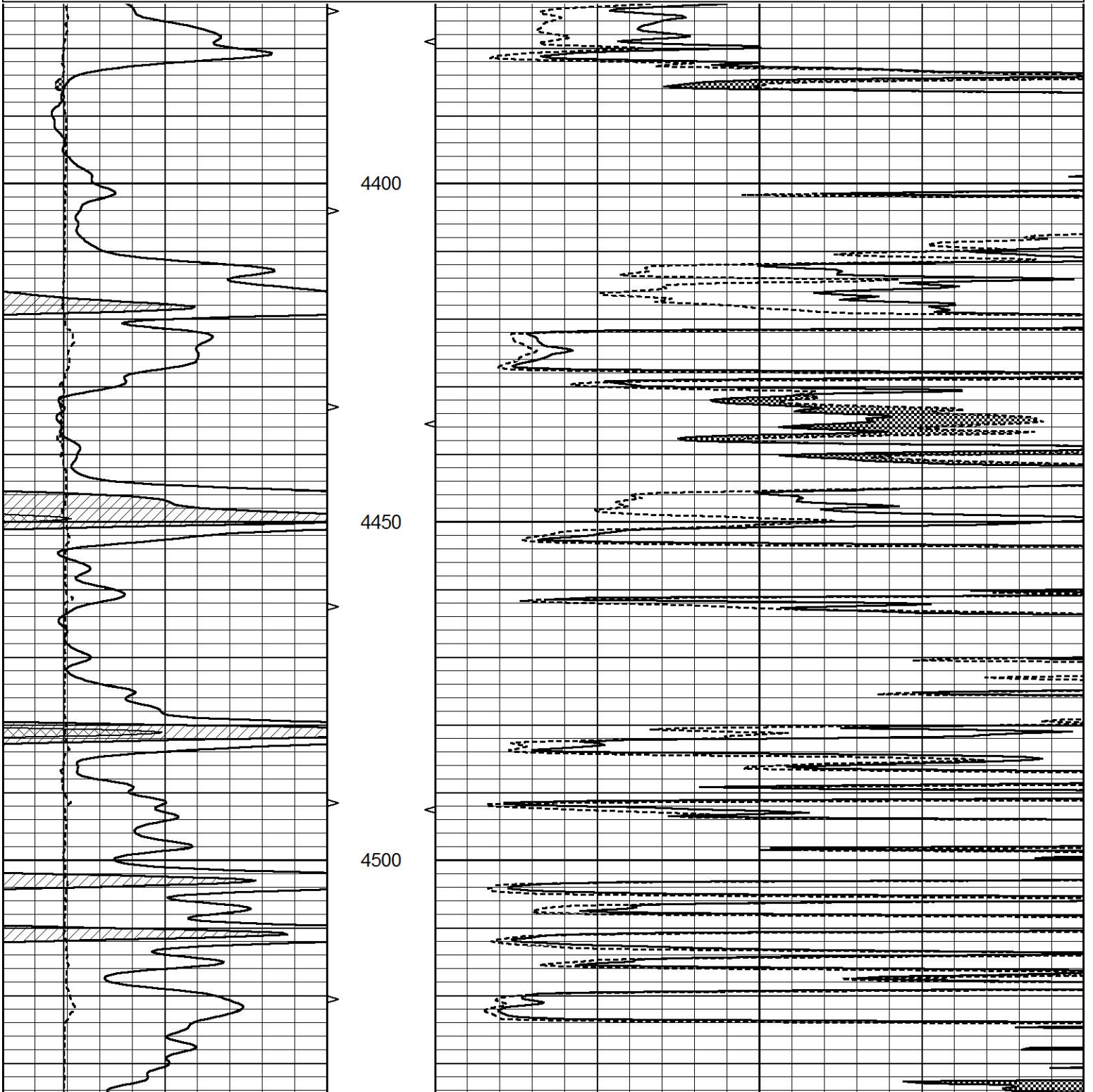


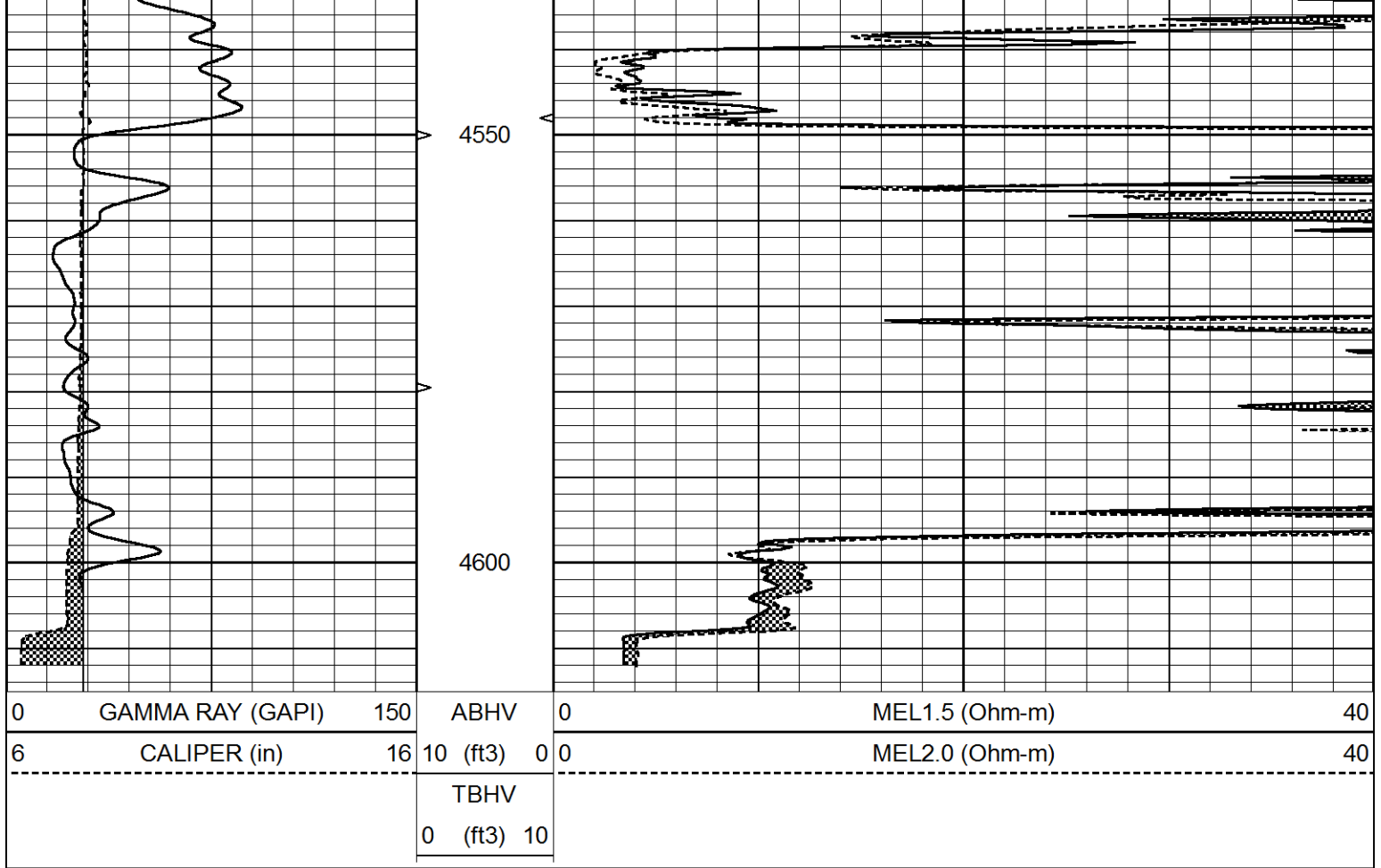


# REPEAT SECTION

Database File 6053pe.db  
 Dataset Pathname pass5.1  
 Presentation Format \_micro  
 Dataset Creation Thu Nov 18 23:55:41 2021  
 Charted by Depth in Feet scaled 1:240

0	GAMMA RAY (GAPI)	150	ABHV	0	MEL1.5 (Ohm-m)	40
6	CALIPER (in)	16	10 (ft3)	0 0	MEL2.0 (Ohm-m)	40
			TBHV			
			0 (ft3)	10		





**Calibration Report**

Database File      6053pe.db  
 Dataset Pathname    pass5.1  
 Dataset Creation    Thu Nov 18 23:55:41 2021

**MICRO\_USR Calibration Report**

Serial Number:	070911	
Tool Model:	ProbeL	
Performed:	Sun Dec 13 14:24:22 2020	
 Caliper Calibration:	Gain=3.755	Offset=1.950
References	Low Cal 8.000	High Cal 14.000
Readings	1.451	3.049
 1.5" Calibration:	Gain=55.000	Offset=-0.700
References	Low Cal 0.000	High Cal 20.000
Readings	0.004	0.843
 2" Calibration:	Gain=50.000	Offset=-0.650
References	Low Cal 0.000	High Cal 20.000
Readings	0.021	0.810

**Microlog Calibration Report**

Serial-Model:                      070911-ProbeL  
 Performed:                         Sat Apr 11 01:13:01 2015

Readings                                      References                                      Results



	Readings			References			Results	
	Zero	Cal		Zero	Cal		m	b
Normal	0.0002	0.4836	V	0.0000	10.0000	Ohm-m	20.6908	-0.0051
Inverse	0.0018	0.6297	V	0.0000	10.0000	Ohm-m	15.9263	-0.0282
Caliper	0.0000	1.0000	V	0.0000	1.0000	in	1.0000	0.0000

Gamma Ray Calibration Report

Serial Number:	070558
Tool Model:	Probe1
Performed:	Fri Oct 30 21:32:56 2020
Calibrator Value:	1.0                      GAPI
Background Reading:	0.0                      cps
Calibrator Reading:	1.0                      cps
Sensitivity:	0.2700                      GAPI/cps