



# RADIAL BOND LOG WITH GAMMA RAY

MIDWEST WIRELINE

**Shakespeare Oil Company, Inc.**

**Well Cale #1-27**

**County Gove State Kansas**

Location: API # : 15-063-22391-00-00

1070 FNL & 2280 FWL

SEC 27 TWP 11S RGE 31W

Perforate

Comp. Shakespeare Oil Company, Inc.  
Well Cale #1-27  
Field  
Co. Gove  
State Kansas

Permanent Datum Ground Level Elevation 2939  
Log Measured From KB 11 Above Perm. Datum  
Drilling Measured From Kelly Bushing

Elevation  
K.B. 2950  
D.F. 2948  
G.L. 2939

Date of Service	2/8/2022		
Run Number	One		
Depth Driller or PBTD	4610		
Depth Logger	4562		
Bottom Log Interval	4560		
Top Log Interval	3050		
Open Hole Size	7.875		
Type Fluid	Water		
Fluid Level	220		
Fluid Density			
Max. Recorded Temperature	121 Deg. F.		
Max. Wellhead Pressure	00 PSI		
Wellhead Connection	Open		
Estimated Cement Top	3160		
Unit Number	T-106		
Wireline Size	.288		
Location	Hays KS		
Recorded By	M. Hiss		
Witnessed By	Brian Cable		
	Size	WFt	Bottom
Tubing Record			
Surface Casing	8.625	23	00 269
Production Casing	5.5	15.5	00 TD
Liner Record			

<<< Fold Here >>>

All interpretations are opinions based on inferences from electrical or other measurements and Midwest Wireline LLC cannot and does not guarantee the accuracy or correctness of any interpretation, and Midwest Wireline LLC will not be liable or responsible for any loss, costs, damages, or expenses incurred or sustained by anyone resulting from any interpretation made by any of our officers, agents or employees.

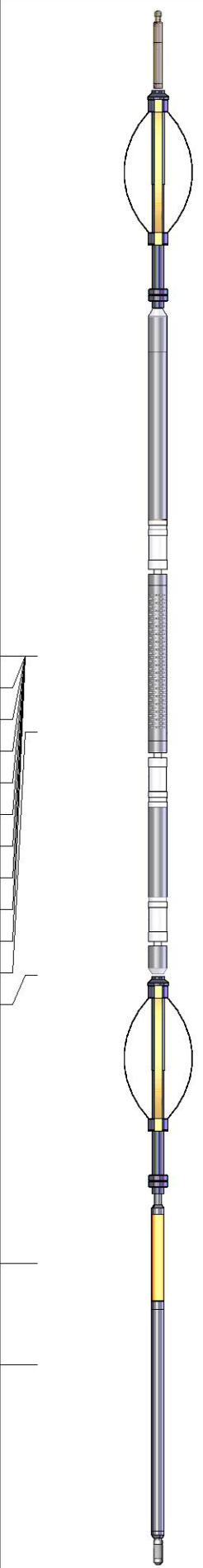
Comments

N/A DENOTES NOT AVAILABLE OR NON-APPLICABLE.  
I-70 & Campus Exit,  
2.5 South to Gove AA Rd, 1/2 West,  
South Into.

THANK YOU FOR USING MIDWEST WIRELINE LLC!

Your Midwest Wireline Crew	Tool Data - Services	Serial Number
Engineer: M. Hiss Operator: J. Rome Operator: Operator:		

Casing	Offset (ft)	Schematic	Description	Length (ft)	O.D. (in)	Weight (lb)
--------	-------------	-----------	-------------	-------------	-----------	-------------

Sensor	Offset (ft)	Schematic	Description	Length (ft)	O.D. (in)	Weight (lb)
			Cable Head-Titan_144 1 7/16" Titan Cable Head	1.03	1.44	2.00
			Centralizer-275 Probe 2 3/4" Probe Adjustable Spring Centralizer	2.88	2.75	15.00
WVFS8	11.94		PROBE-RBT-DIGITAL-RBL-D (PR-012) Probe 2 3/4" Radii Bond-Digital	8.75	2.75	100.00
WVFS7	11.94					
WVFS6	11.94					
WVFS5	11.94					
WVFS4	11.94					
WVFS3	11.94					
WVFS2	11.94					
WVFS1	11.94					
WVFCAL	11.94					
WVF3FT	11.94					
WVF5FT	10.94					
HEADVOLT	7.75					
			Centralizer-275 Probe 2 3/4" Probe Adjustable Spring Centralizer	2.88	2.75	15.00
CCL	3.96					
GR	2.63		GR_CCL-2 3/4" Probe (060802)	4.54	2.75	50.00
			Bullnose-PROBE Probe Go Pin Pressure Cap	0.33	1.38	1.00

Dataset: shakespeare\_cale\_#1\_27\_scbl.db: field/well/run1/pass6  
 Total length: 20.41 ft  
 Total weight: 183.00 lb  
 O.D.: 2.75 in

# Log Variables

DatabaseC:\ProgramData\Warrion\Data\shakespeare\_cale\_#1\_27\_scbl.db  
 Dataset field/well/run1/pass6/\_vars\_

## Top - Bottom

BOREID in 7.875	BOTTEMP degF 121	CASEOD in 5.5	CASETHCK in 0.275	CASEWGHT lb/ft 15.5	MAXAMPL mV 0	MINAMPL mV 1	MINATTN db/ft 0.08
PERFS 0	PPT usec 0	SRFTEMP degF 50	TDEPTH ft 4562				

## Variable Description

BOREID : Borehole I.D.  
 BOTTEMP : Bottom Hole Temperature  
 CASEOD : Casing O.D.  
 CASETHCK : Casing Thickness

CASEWGHT : Casing Weight  
 MAXAMPL : Maximum Amplitude  
 MINAMPL : Minimum Amplitude  
 MINATTN : Minimum Attenuation

PERFS : Perforation Flag  
 PPT : Predicted Pipe Time  
 SRFTEMP : Surface Temperature  
 TDEPTH : Total Depth



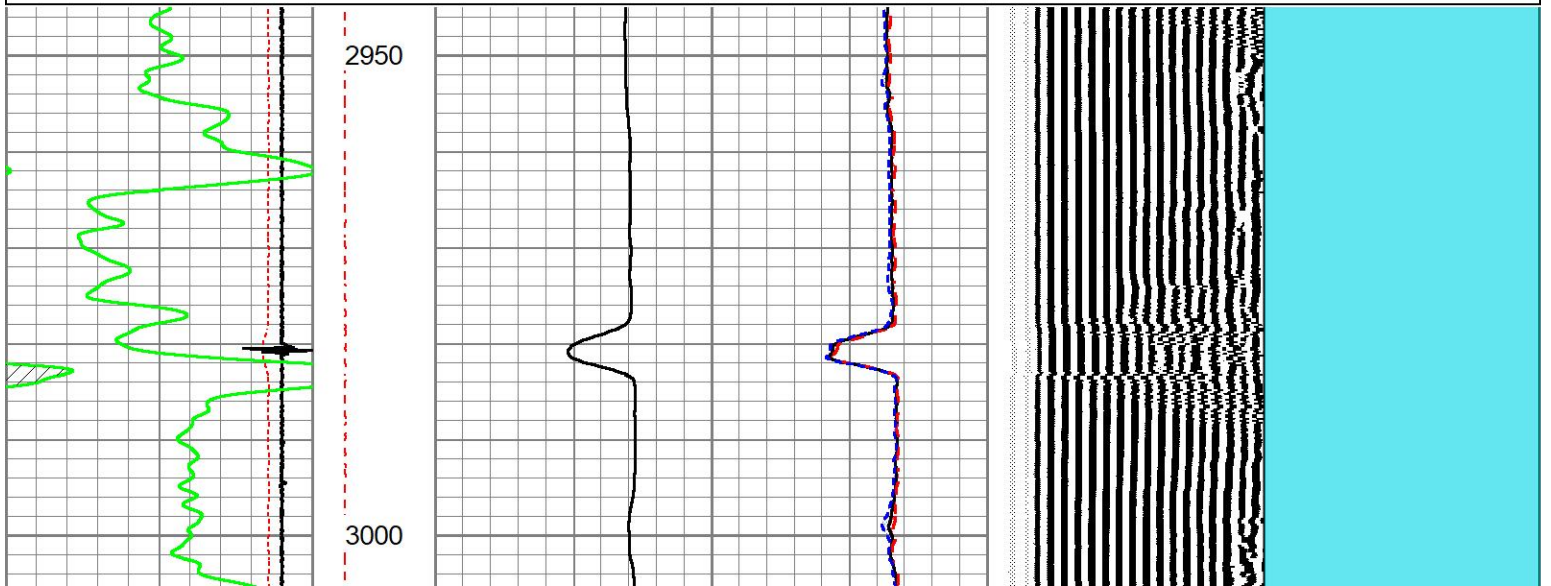
MIDWEST WIRELINE

## FREE PIPE SECTION

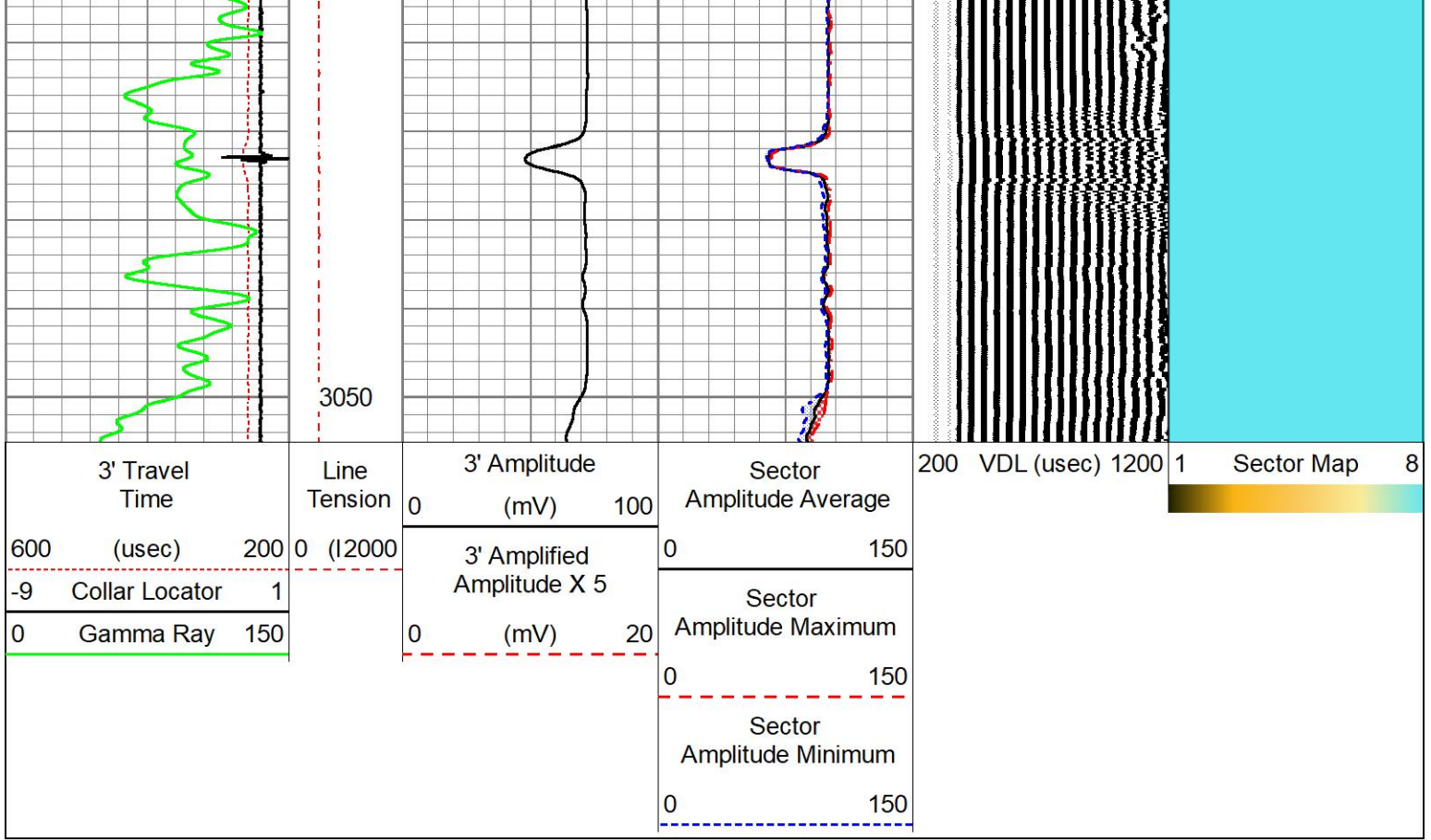
ZERO PSI APPLIED AT SURFACE

Database File      shakespeare\_cale\_#1\_27\_scbl.db  
 Dataset Pathname    pass2  
 Presentation Format    pinr\_scbl  
 Dataset Creation    Tue Feb 08 10:03:55 2022  
 Charted by          Depth in Feet scaled 1:240

3' Travel Time	Line Tension	3' Amplitude (mV)	Sector Amplitude Average	200 VDL (usec) 1200	1	Sector Map	8
600 (usec) 200	0 (12000)	0 100	0 150				
-9 Collar Locator 1		3' Amplified Amplitude X 5	Sector Amplitude Maximum				
0 Gamma Ray 150		0 (mV) 20	0 150				
			Sector Amplitude Minimum				
			0 150				



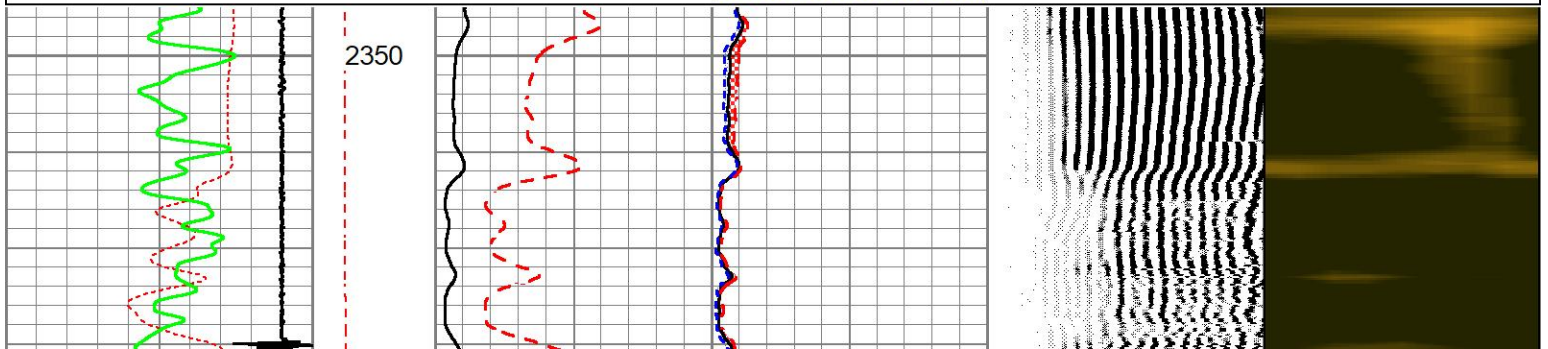
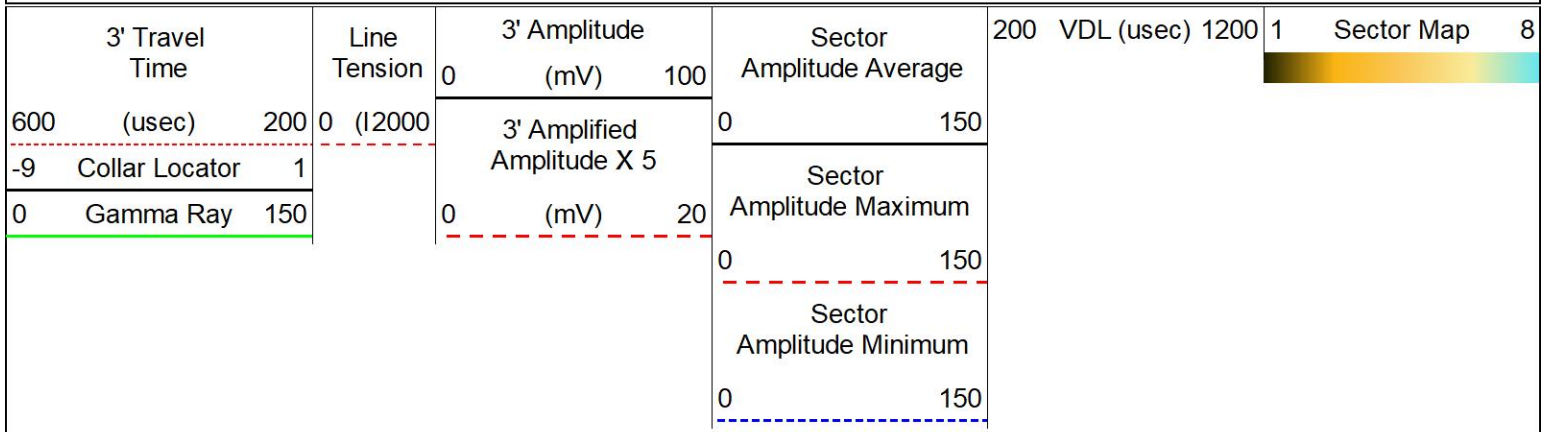


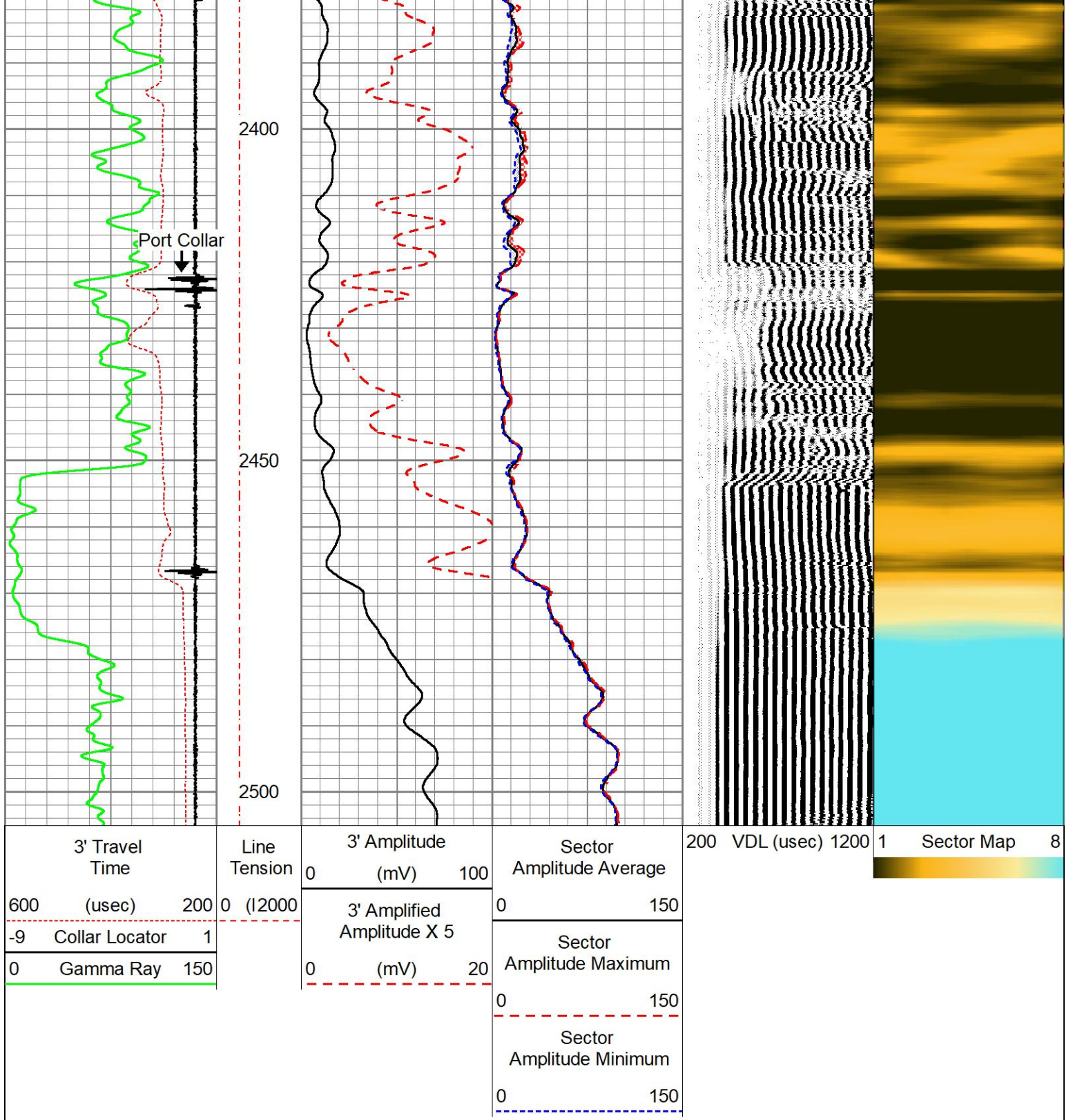


# MAIN LOG

Port Collar @ 2422'

Database File shakespeare\_cale\_#1\_27\_scbl.db  
 Dataset Pathname pass6  
 Presentation Format pinr\_scbl  
 Dataset Creation Tue Feb 08 10:47:46 2022  
 Charted by Depth in Feet scaled 1:240

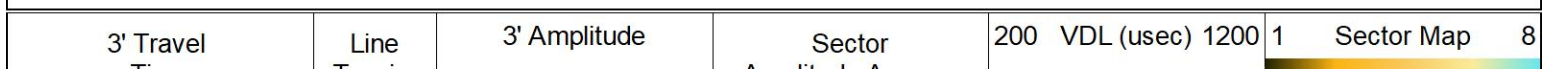




# MAIN LOG

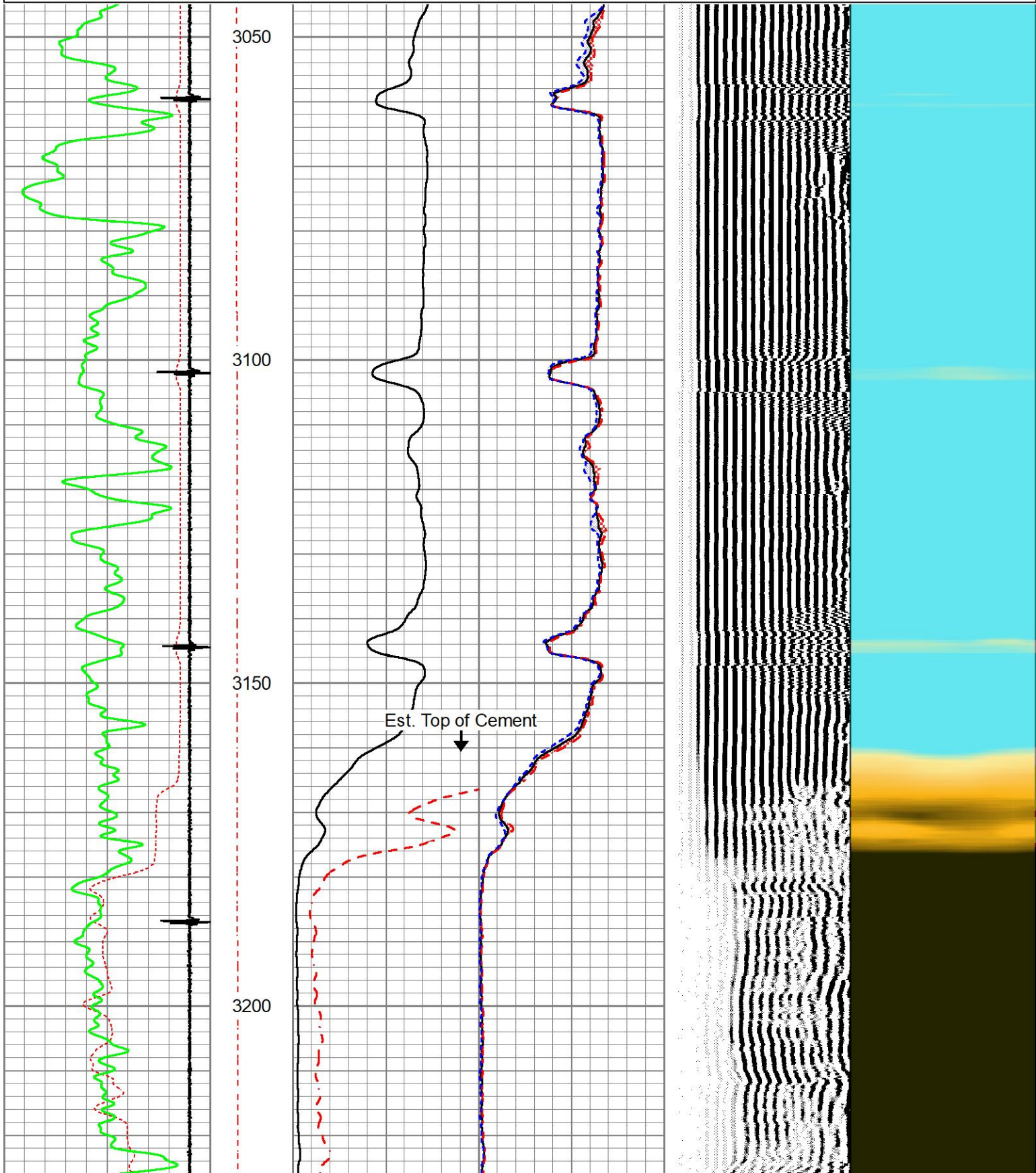
ZERO PSI APPLIED AT SURFACE

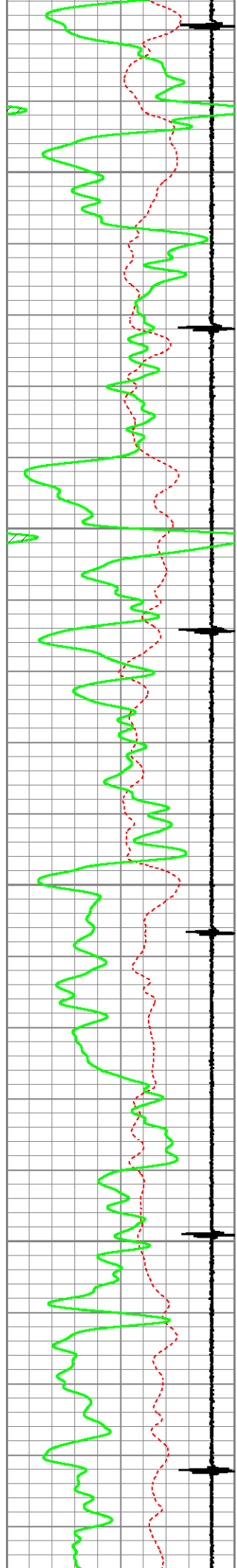
Database File: shakespeare\_cale\_#1\_27\_scbl.db  
 Dataset Pathname: pass5  
 Presentation Format: pinr\_scbl  
 Dataset Creation: Tue Feb 08 10:21:09 2022  
 Charted by: Depth in Feet scaled 1:240



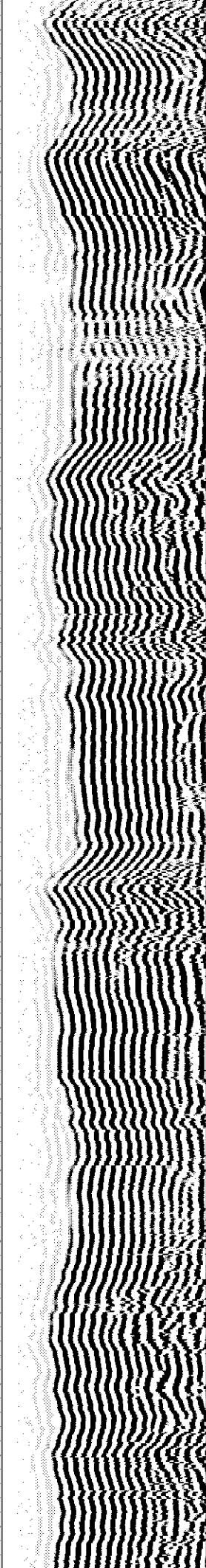
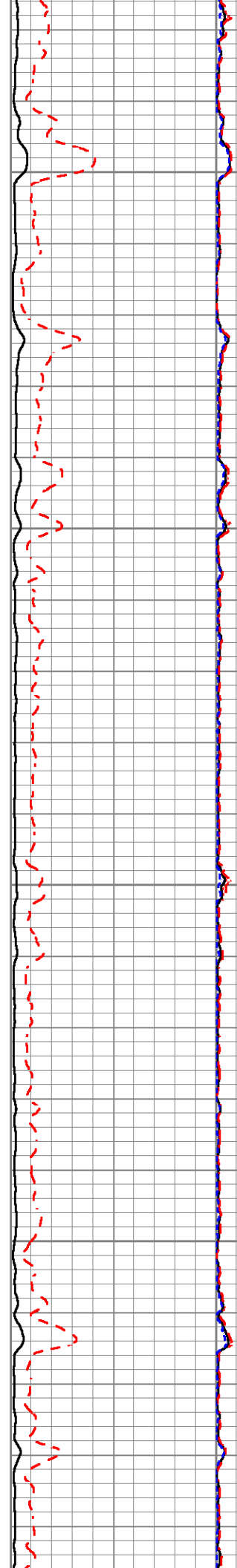


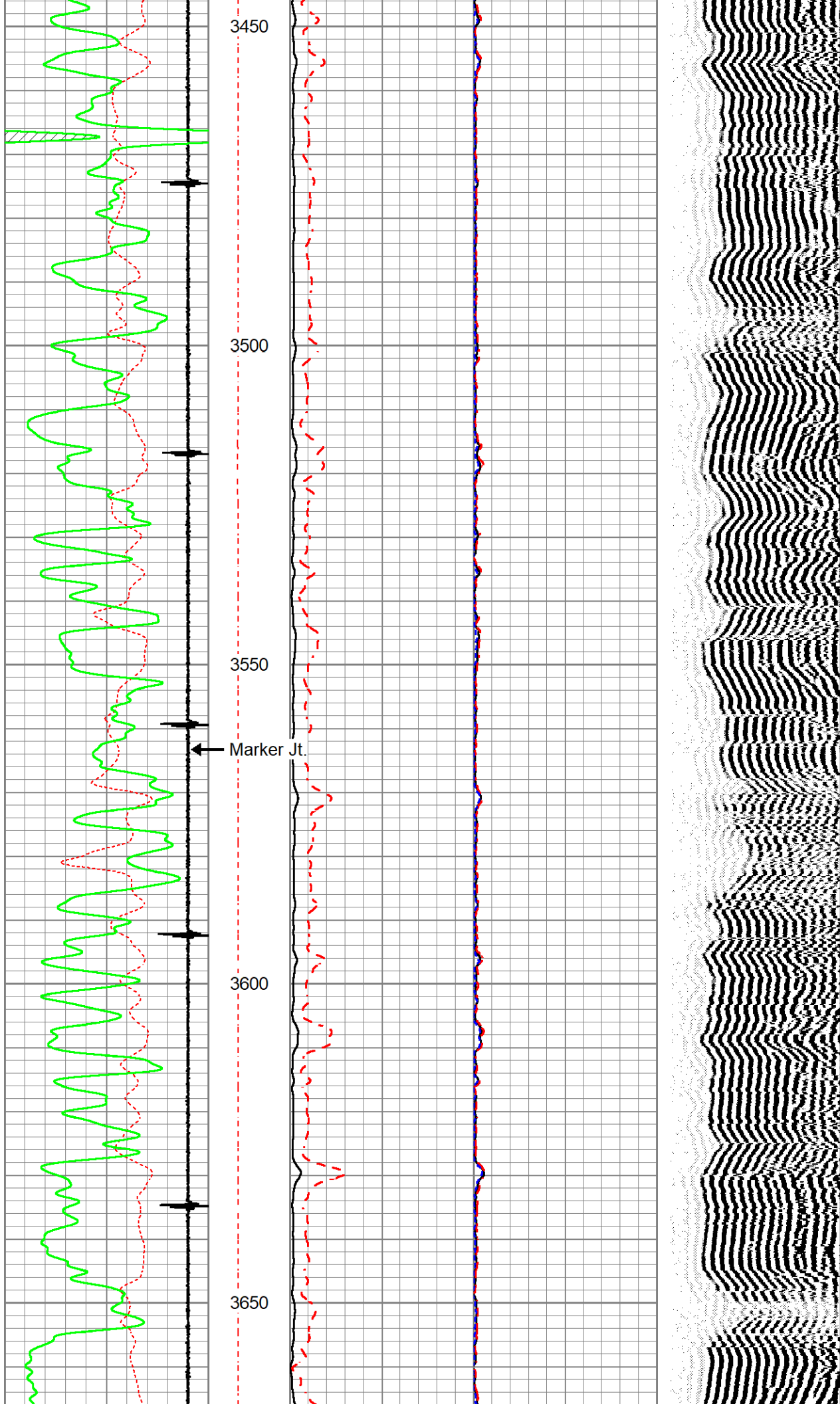
Time	600 (usec)	200	0	100	Amplitude Average	0	150
	-9 Collar Locator	1	0	3' Amplified Amplitude X 5			
	0 Gamma Ray	150	0	(mV)	20		
						Sector Amplitude Maximum	0 150
						Sector Amplitude Minimum	0 150



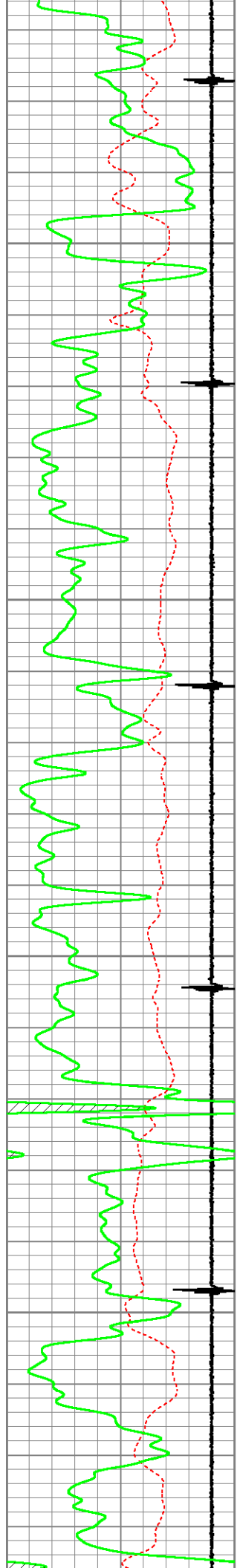


3250  
3300  
3350  
3400







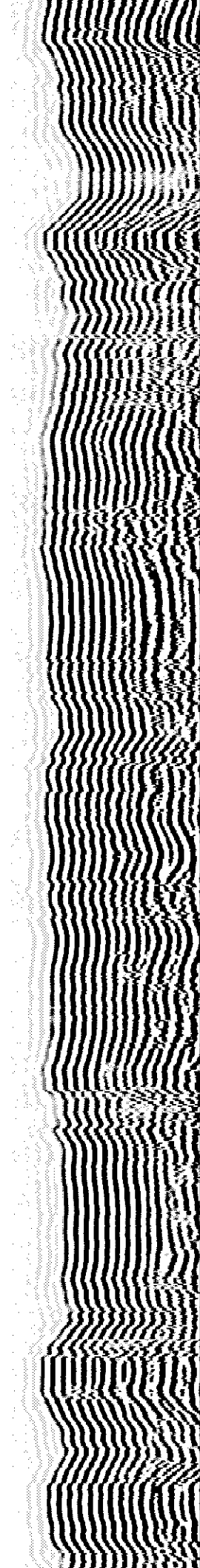
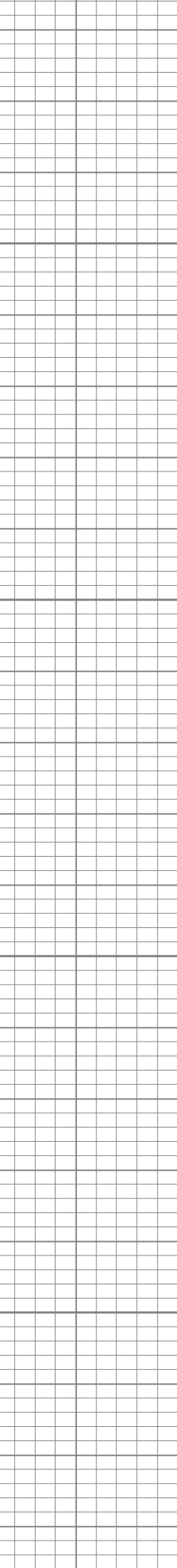
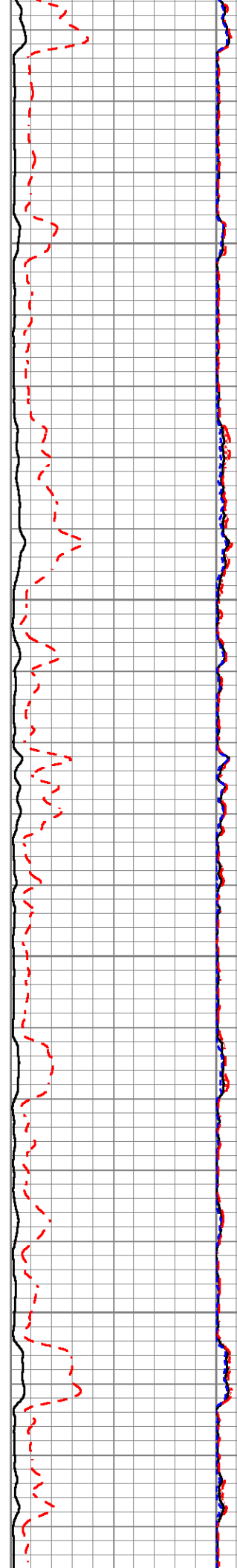


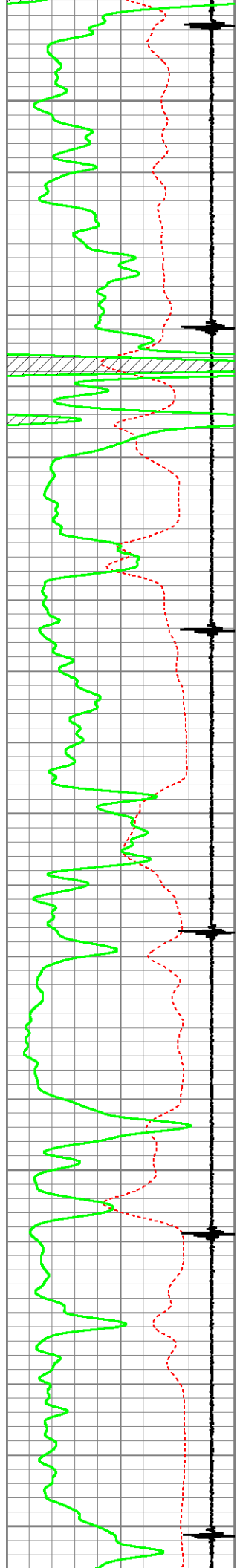
3700

3750

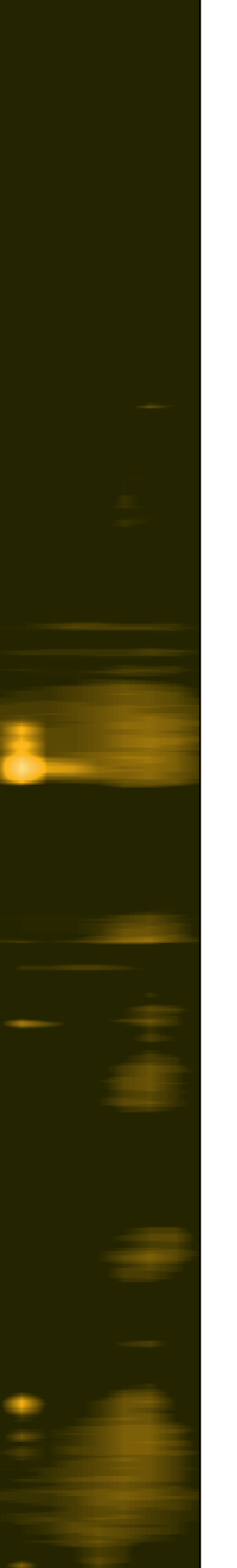
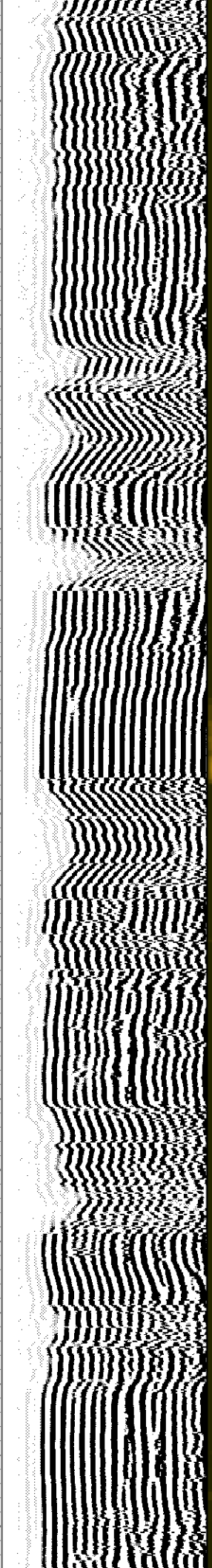
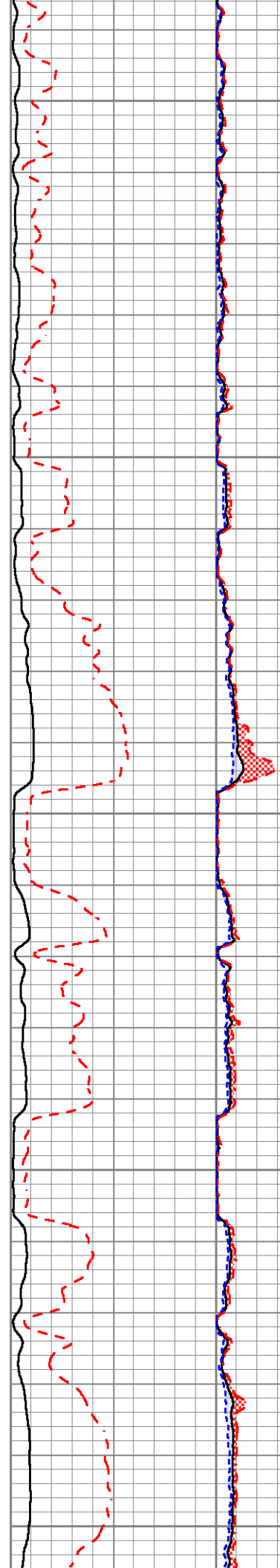
3800

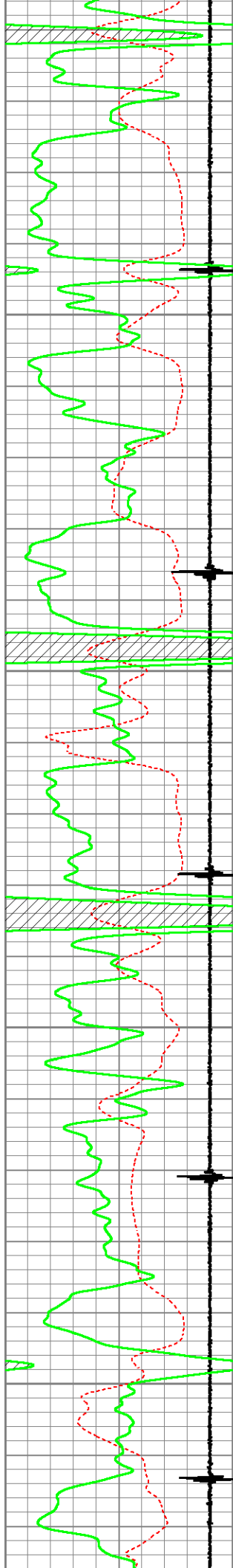
3850





3900  
3950  
4000  
4050  
4100



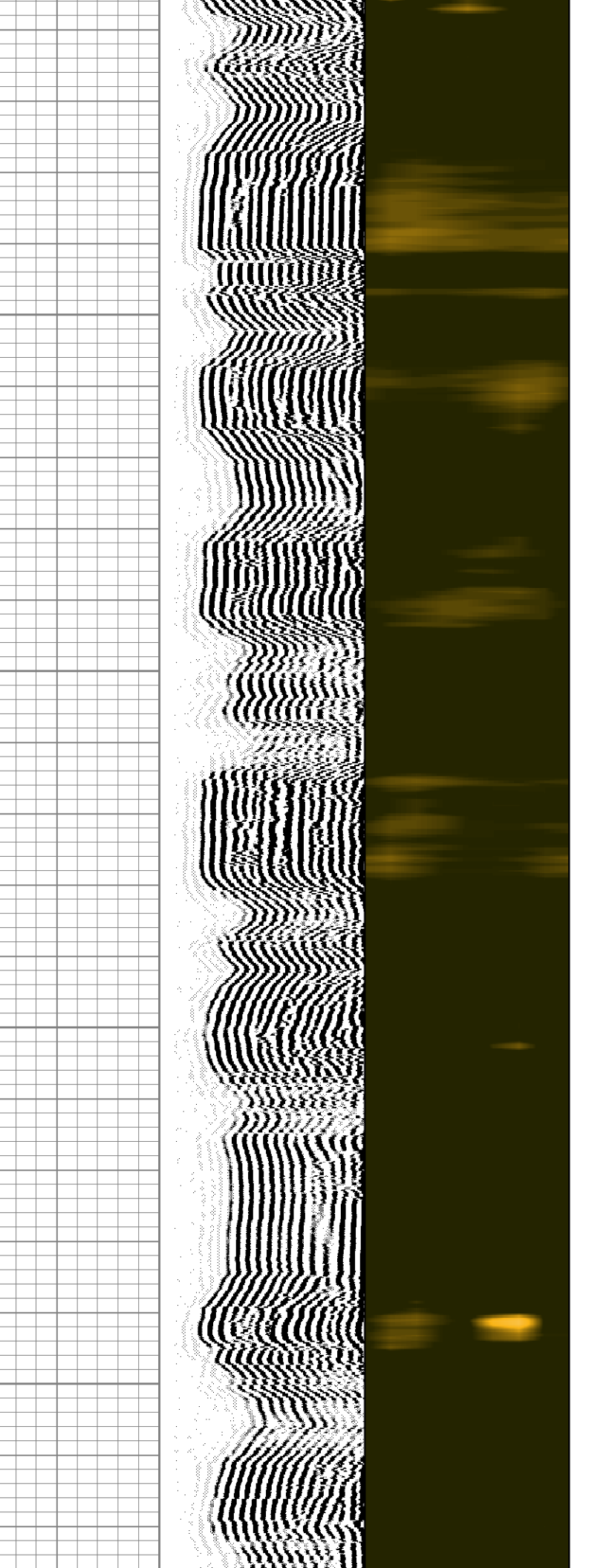
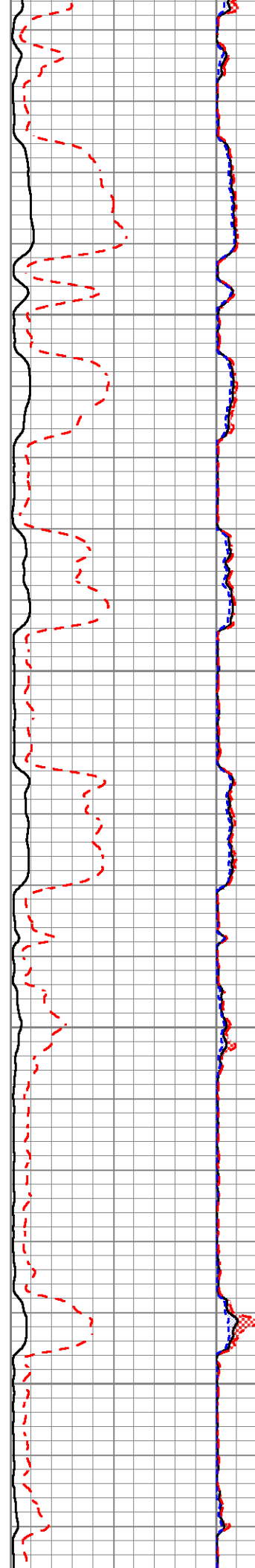


4150

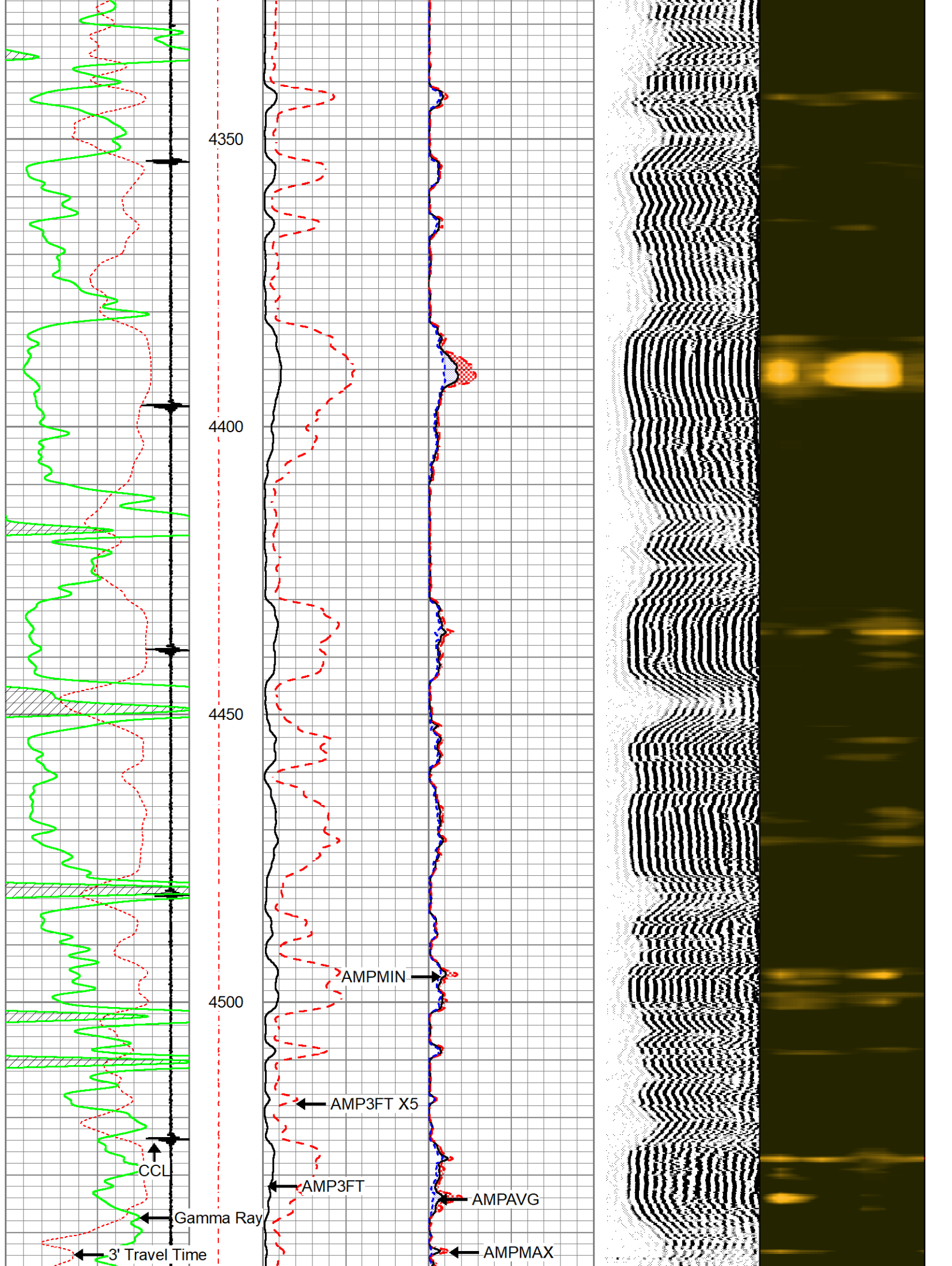
4200

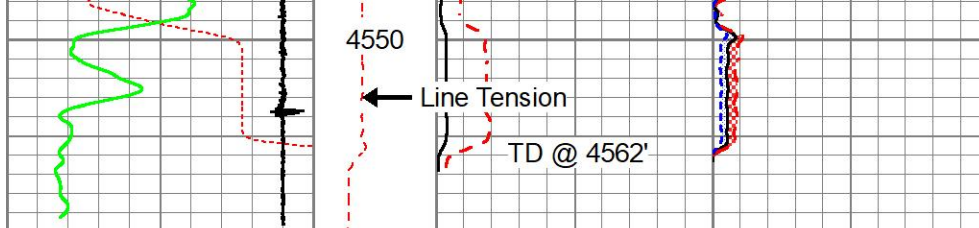
4250

4300









3' Travel Time 600 (usec) 200	Line Tension 0 (12000)	3' Amplitude (mV) 100	Sector Amplitude Average	200	VDL (usec) 1200	1	Sector Map	8
-9 Collar Locator 1		3' Amplified Amplitude X 5 (mV) 20	Sector Amplitude Maximum	0				
0 Gamma Ray 150				Sector Amplitude Minimum	0			

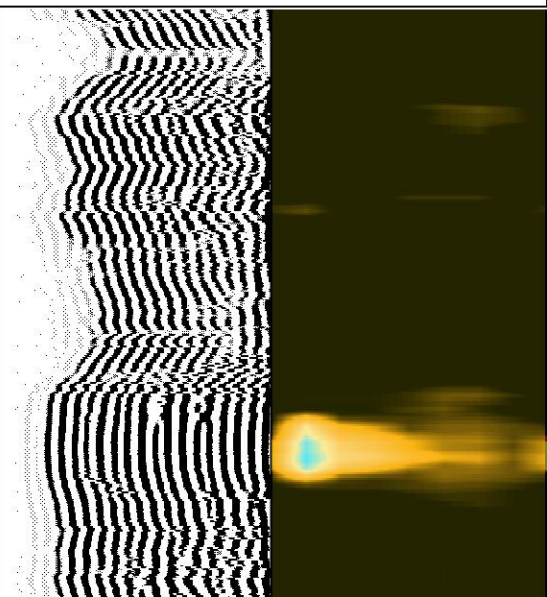
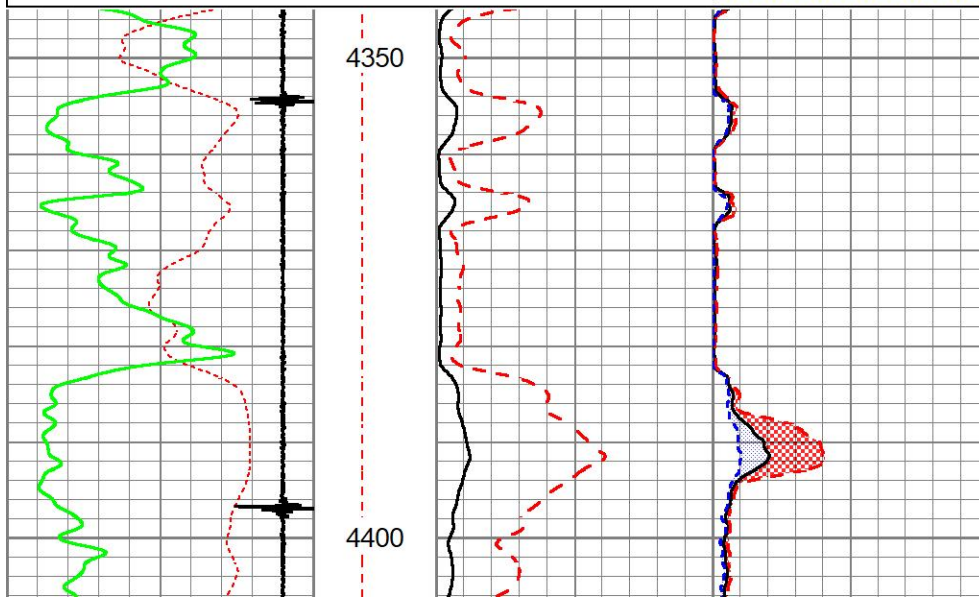


## REPEAT SECTION

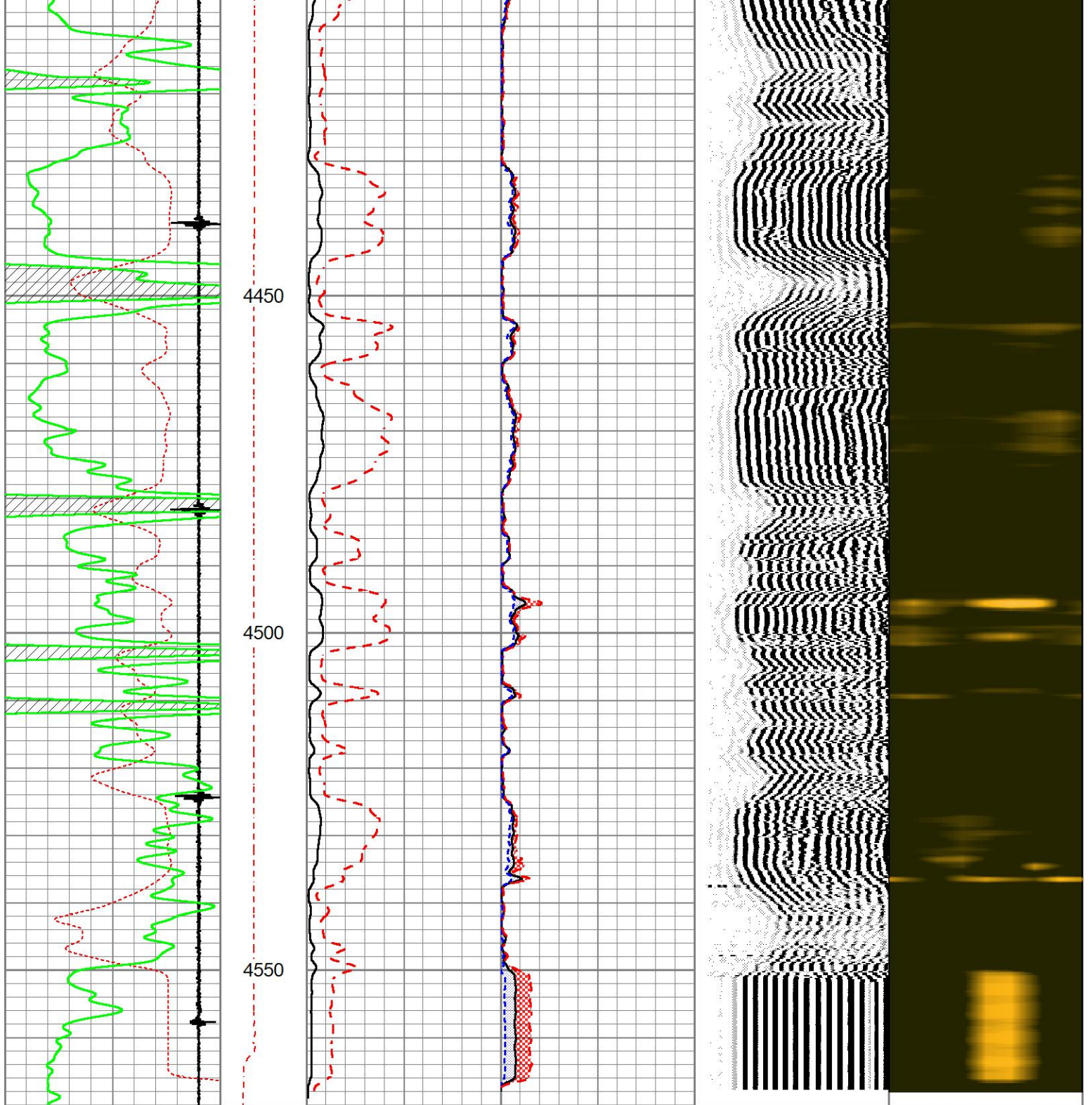
ZERO PSI APPLIED AT SURFACE

Database File: shakespeare\_cale\_#1\_27\_scbl.db  
 Dataset Pathname: pass4  
 Presentation Format: pinr\_scbl  
 Dataset Creation: Tue Feb 08 10:14:11 2022  
 Charted by: Depth in Feet scaled 1:240

3' Travel Time 600 (usec) 200	Line Tension 0 (12000)	3' Amplitude (mV) 100	Sector Amplitude Average	200	VDL (usec) 1200	1	Sector Map	8
-9 Collar Locator 1		3' Amplified Amplitude X 5 (mV) 20	Sector Amplitude Maximum	0				
0 Gamma Ray 150				Sector Amplitude Minimum	0			







3' Travel Time		Line Tension	3' Amplitude		Sector Amplitude Average	
600 (usec)	200		0 (mV)	100	0	150
-9 Collar Locator		0 (12000)	3' Amplified Amplitude X 5		Sector Amplitude Maximum	
0	150		0 (mV)	20	0	150
					Sector Amplitude Minimum	
					0	150



Gamma Ray Calibration Report

Serial Number: 060802  
 Tool Model: 2 3/4" Probe  
 Performed: Tue May 11 19:37:17 2021

Calibrator Value: 1.0

Background Reading: 0.0 cps  
 Calibrator Reading: 1.0 cps

Sensitivity: 0.8000 /cps

Segmented Cement Bond Log Calibration Report

Serial Number: PR-012  
 Tool Model: RBL-D

Calibration Casing Diameter: 5.500 in  
 Calibration Depth: 3019.897 ft

Master Calibration, performed Tue Feb 8 10:03:31 2022:

	Raw (v)		Calibrated (mv)		Results	
	Zero	Cal	Zero	Cal	Gain	Offset
3'	-0.001	2.034	0.700	71.921	34.995	0.727
CAL	-0.004	2.435				
5'	-0.002	1.825	0.700	71.921	38.982	0.791
SUM						
S1	0.021	2.093	0.000	100.000	48.261	-0.991
S2	0.001	2.115	0.000	100.000	47.312	-0.066
S3	0.001	2.086	0.000	100.000	47.981	-0.070
S4	0.001	2.004	0.000	100.000	49.933	-0.042
S5	0.000	1.896	0.000	100.000	52.756	-0.017
S6	-0.000	1.863	0.000	100.000	53.676	0.008
S7	-0.000	1.913	0.000	100.000	52.275	0.011
S8	-0.001	2.032	0.000	100.000	49.207	0.026

Air Zero Calibration, performed Tue Feb 8 09:33:33 2022:

	Raw (v)		Calibrated (v)		Results	
	Zero		Zero		Offset	
3'	0.000		0.000			0.000
5'	0.000		0.000			0.000
SUM						
S1	0.000		0.000			0.000
S2	0.000		0.000			0.000
S3	0.000		0.000			0.000
S4	0.000		0.000			0.000
S5	0.000		0.000			0.000
S6	0.000		0.000			0.000
S7	0.000		0.000			0.000
S8	0.000		0.000			0.000





MIDWEST WIRELINE

Field

County

State

Gove

Kansas