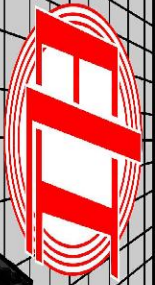


SONIC
LOG



Company DOWNING - NELSON OIL COMPANY, INC.
Well CHARLENE #1-17
Field UNNAMED
County RAWLINS State KANSAS

Location: 2310' FSL & 835' FWL
W/2 - NE - NW - SW
API #: 15-153-21272-0000
Permanent Datum GROUND LEVEL Elevation 3345
Log Measured From KELLY BUSHING 8' A.G.L.
Drilling Measured From KELLY BUSHING
Other Services
CDL/CNL
DIL/ML
Elevation
K.B. 3353
D.F. 3351
G.L. 3345

Company	DOWNING - NELSON OIL CO., INC.
Well	CHARLENE #1-17
Field	UNNAMED
County	RAWLINS
State	KANSAS
Date	12/4/21
Run Number	TWO
Depth Driller	4946
Depth Logger	4948
Bottom Logged Interval	4940
Top Log Interval	400
Casing Driller	8 5/8"@446'
Casing Logger	446
Bit Size	7 7/8"
Type Fluid in Hole	CHEMICAL MUD
Density / Viscosity	9.3/60
PH / Fluid Loss	9.5/8.4
Source of Sample	FLOWLINE
Rm @ Meas. Temp	1.75@92F
Rmf @ Meas. Temp	1.31@92F
Rmc @ Meas. Temp	2.10@92F
Source of Rmf / Rmc	MEASUREMENT
Rm @ BHT	1.29@125F
Time Circulation Stopped	4 HOURS
Time Logger on Bottom	9:30 P.M.
Maximum Recorded Temperature	125F
Equipment Number	922339
Location	HAYS, KANSAS
Recorded By	JEFF LUEBBERS
Witnessed By	MARC DOWNING

<<< Fold Here >>>

All interpretations are opinions based on inferences from electrical or other measurements and we cannot and do not guarantee the accuracy or correctness of any interpretation, and we shall not, except in the case of gross or willful negligence on our part, be liable or responsible for any loss, costs, damages, or expenses incurred or sustained by anyone resulting from any interpretation made by any of our officers, agents or employees. These interpretations are also subject to our general terms and conditions set out in our current Price Schedule.

15-153-21272-0000 Comments

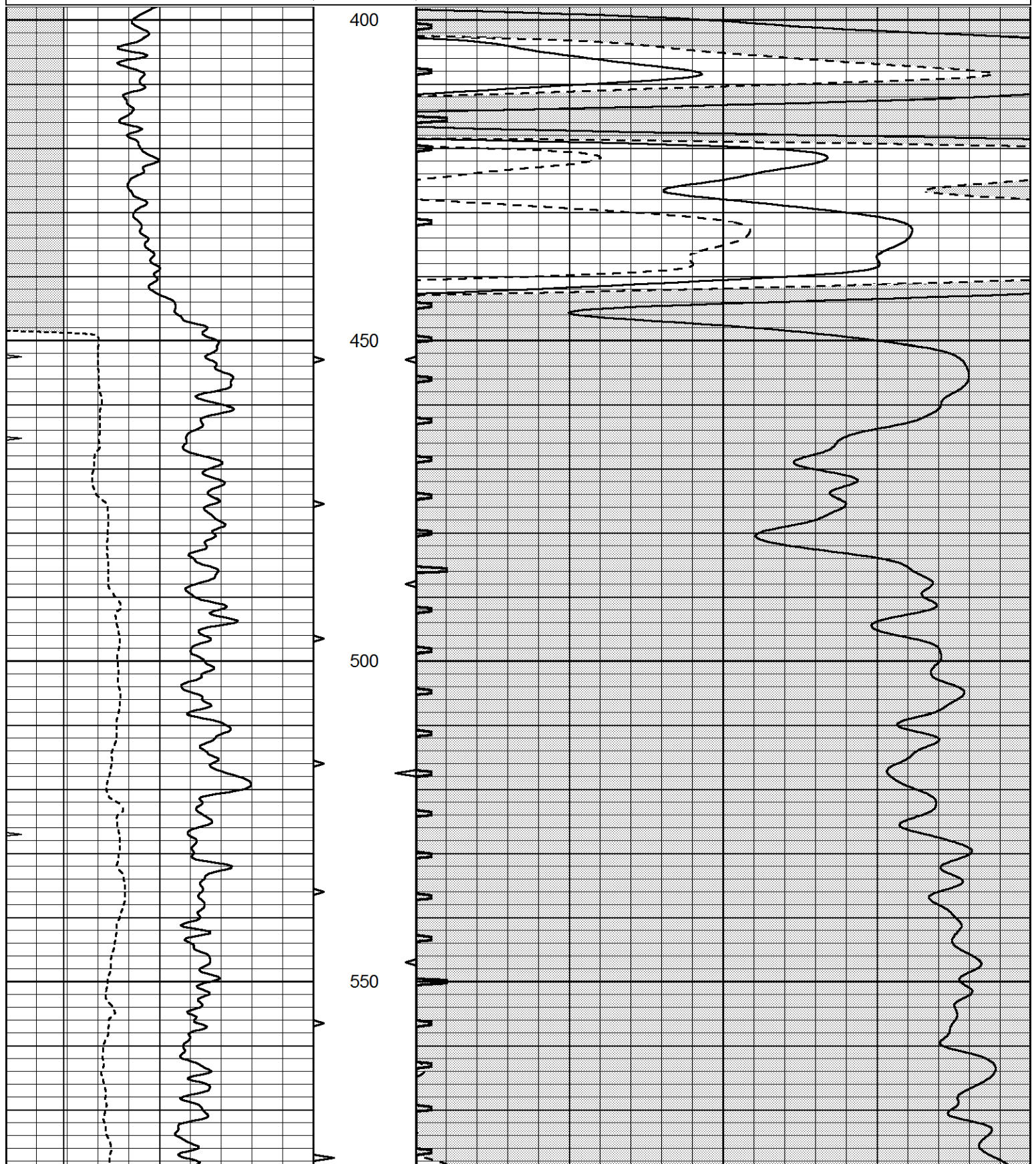
THANK YOU FOR USING ELI WIRELINE HAYS, KANSAS (785) 628-6395
DIRECTIONS
BREWSTER, KS., N. ON BLKTOP TO CURVE WEST, THEN 3N., 1/2W., N. INTO

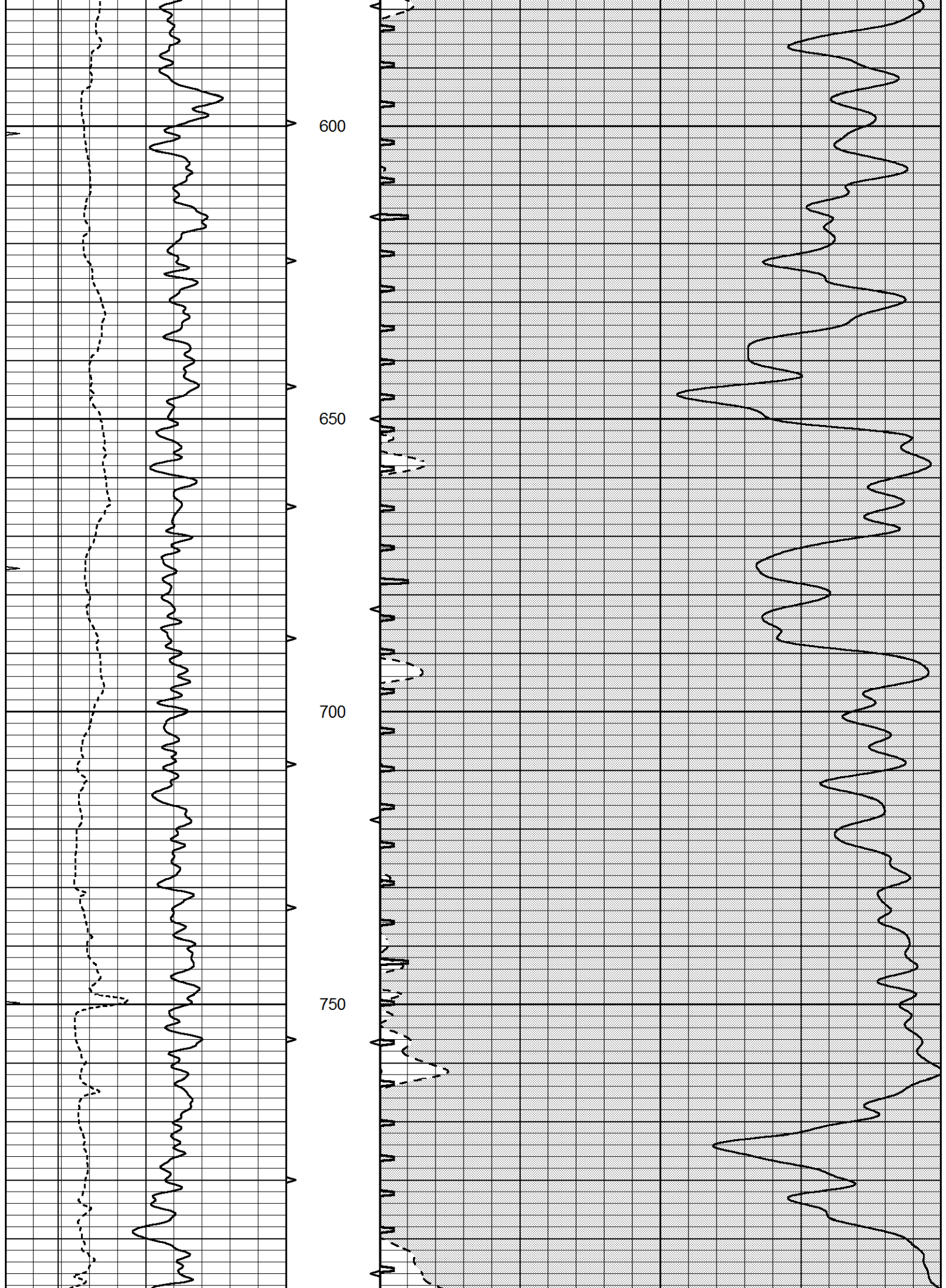


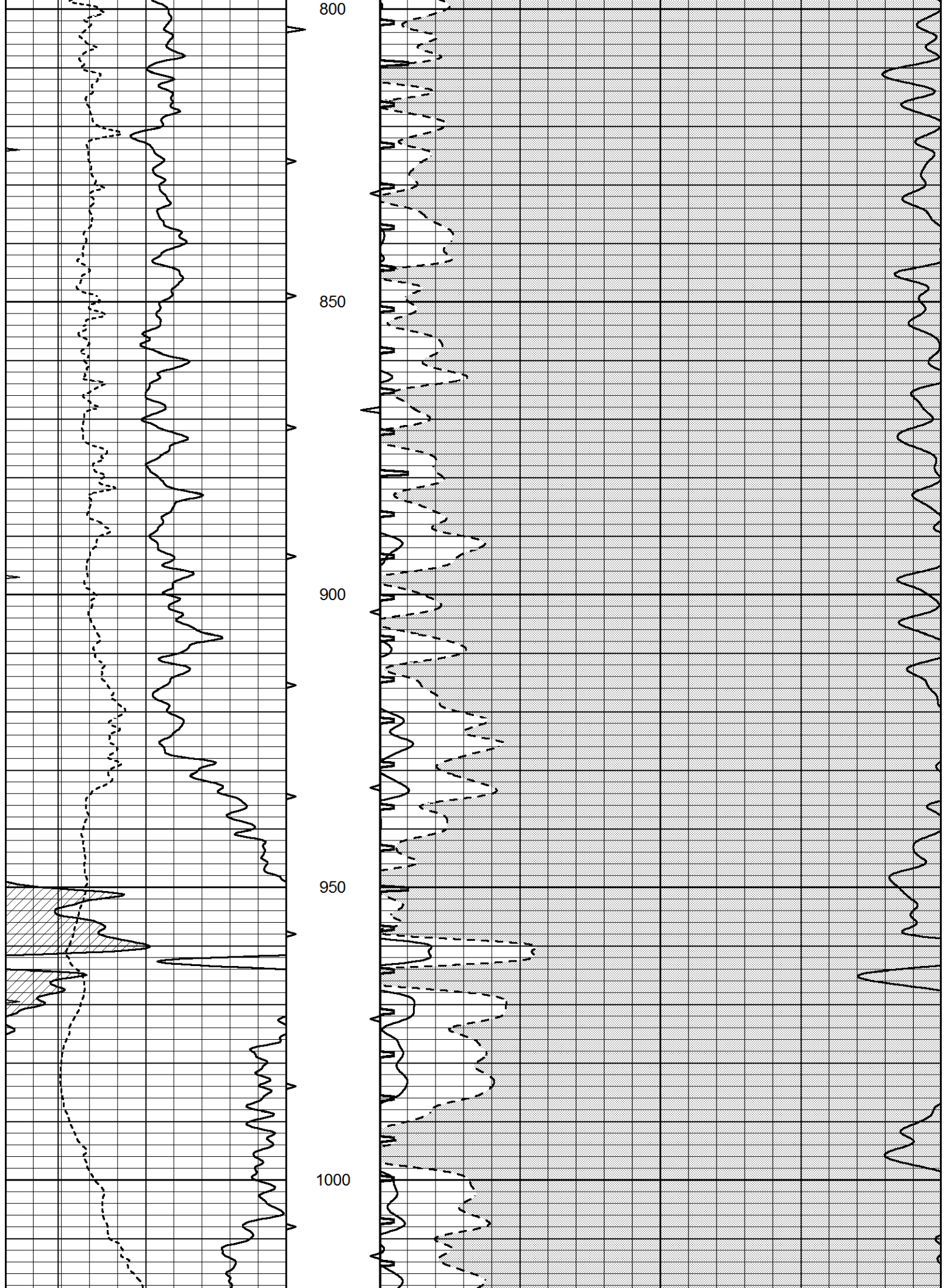
MAIN SECTION

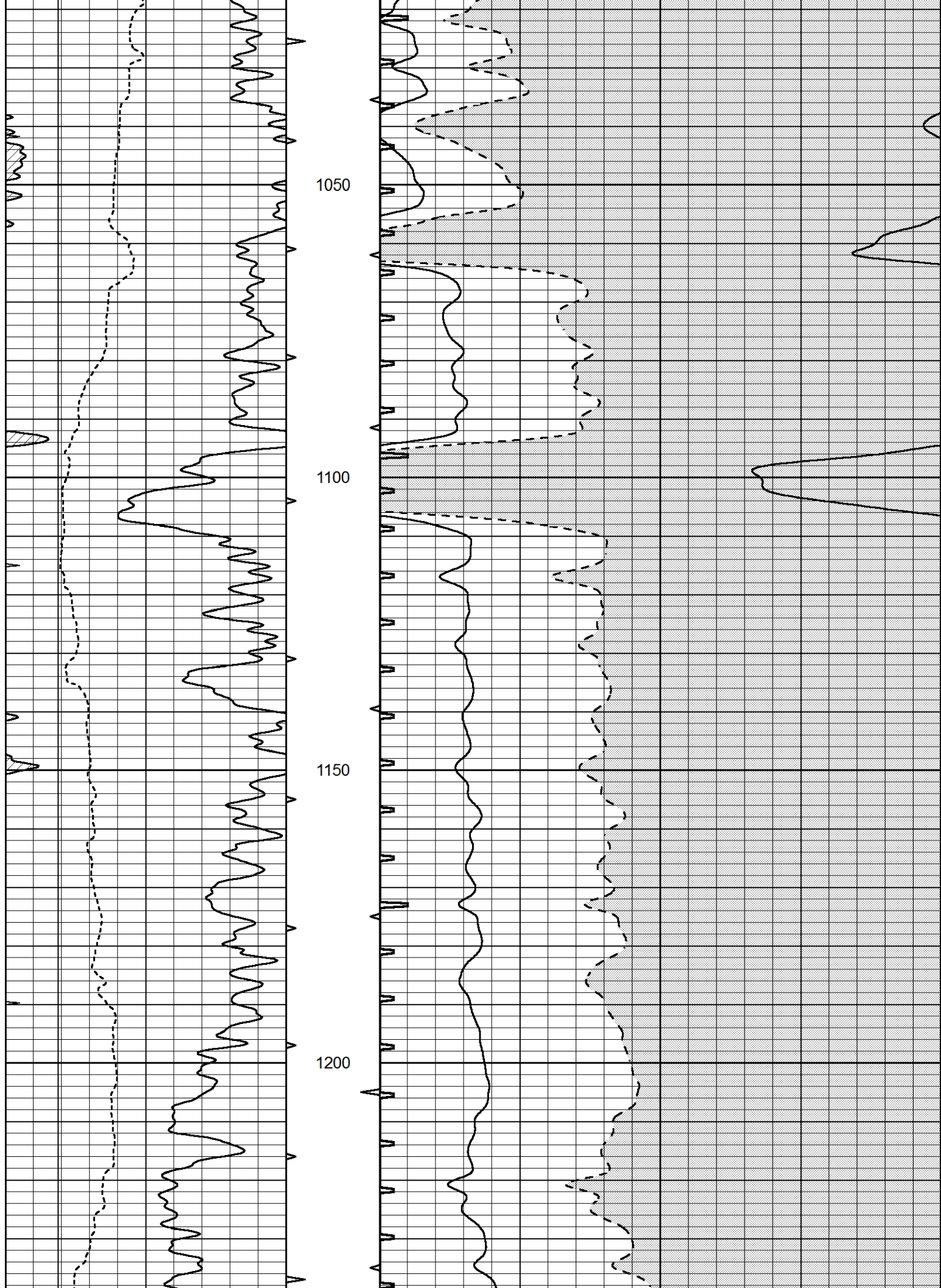
Database File 5840ddn.db
 Dataset Pathname pass6.3
 Presentation Format slt
 Dataset Creation Sat Dec 04 23:25:39 2021
 Charted by Depth in Feet scaled 1:240

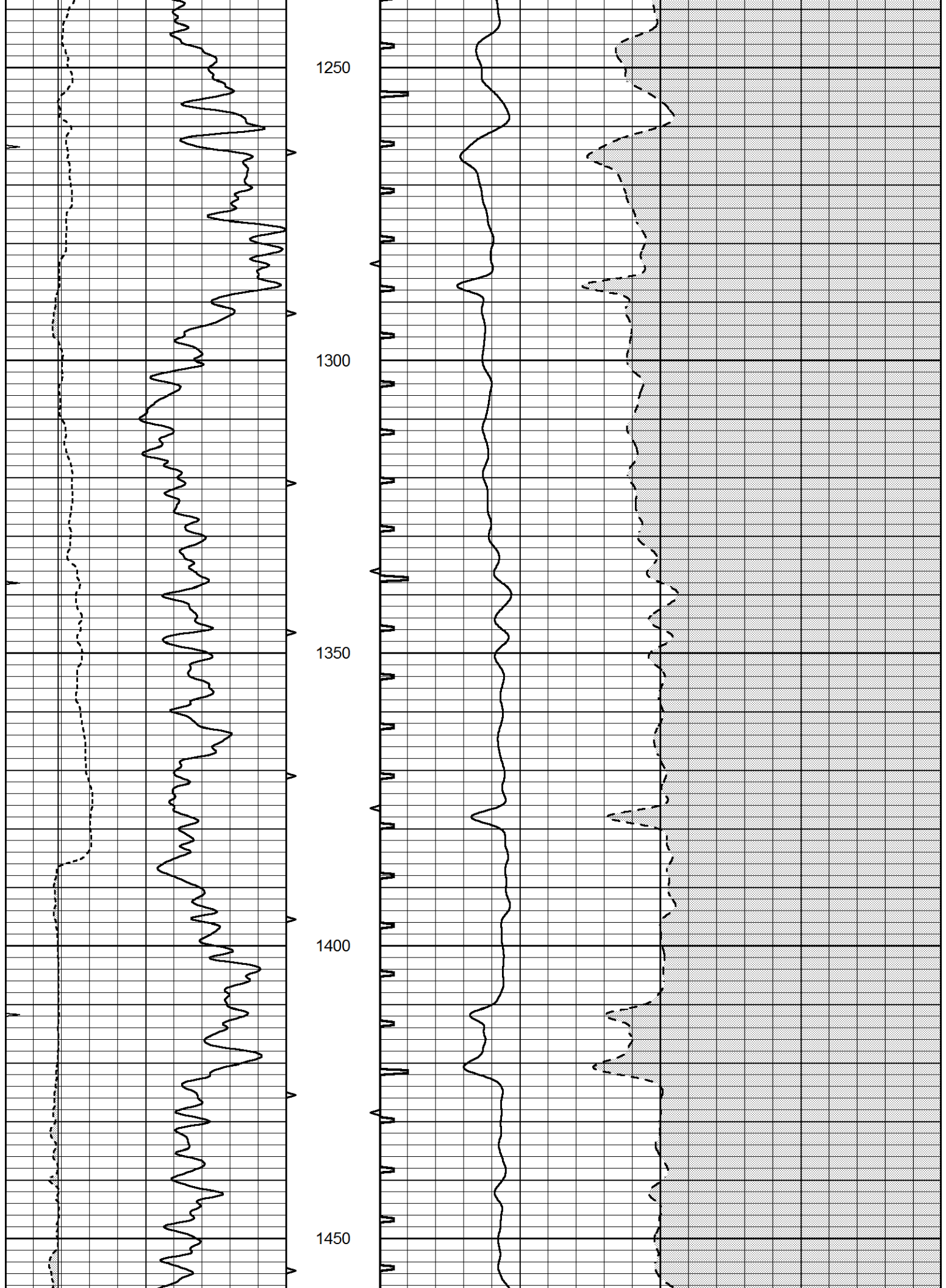
0	GAMMA RAY (GAPI)	150	ABHV	140	DELTA TIME (usec/ft)	40
6	CALIPER (in)	16	10 (ft3) 0	30	SONIC POROSITY (pu)	-10
0	MINMK	20	TBHV	0	ITT (msec)	20
			0 (ft3) 10			

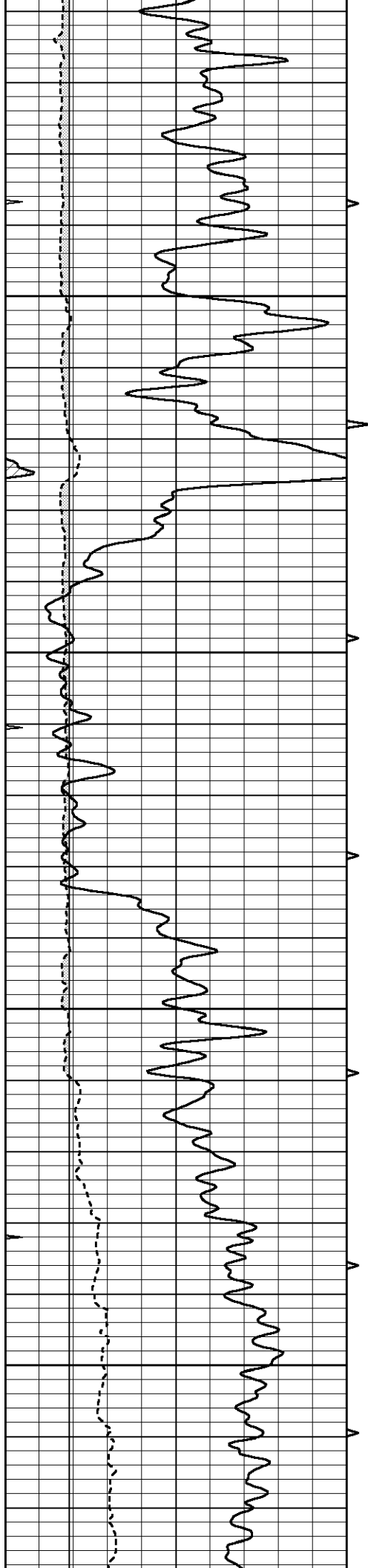










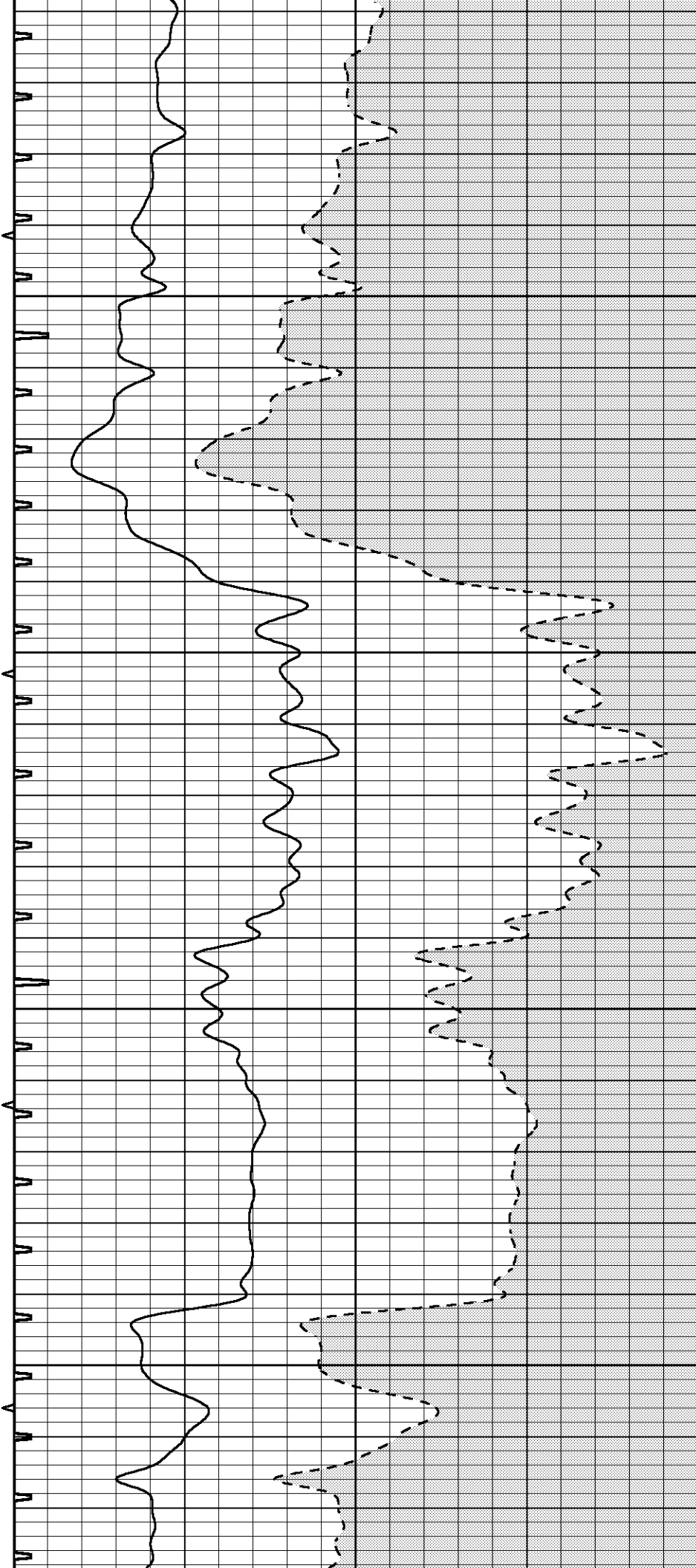


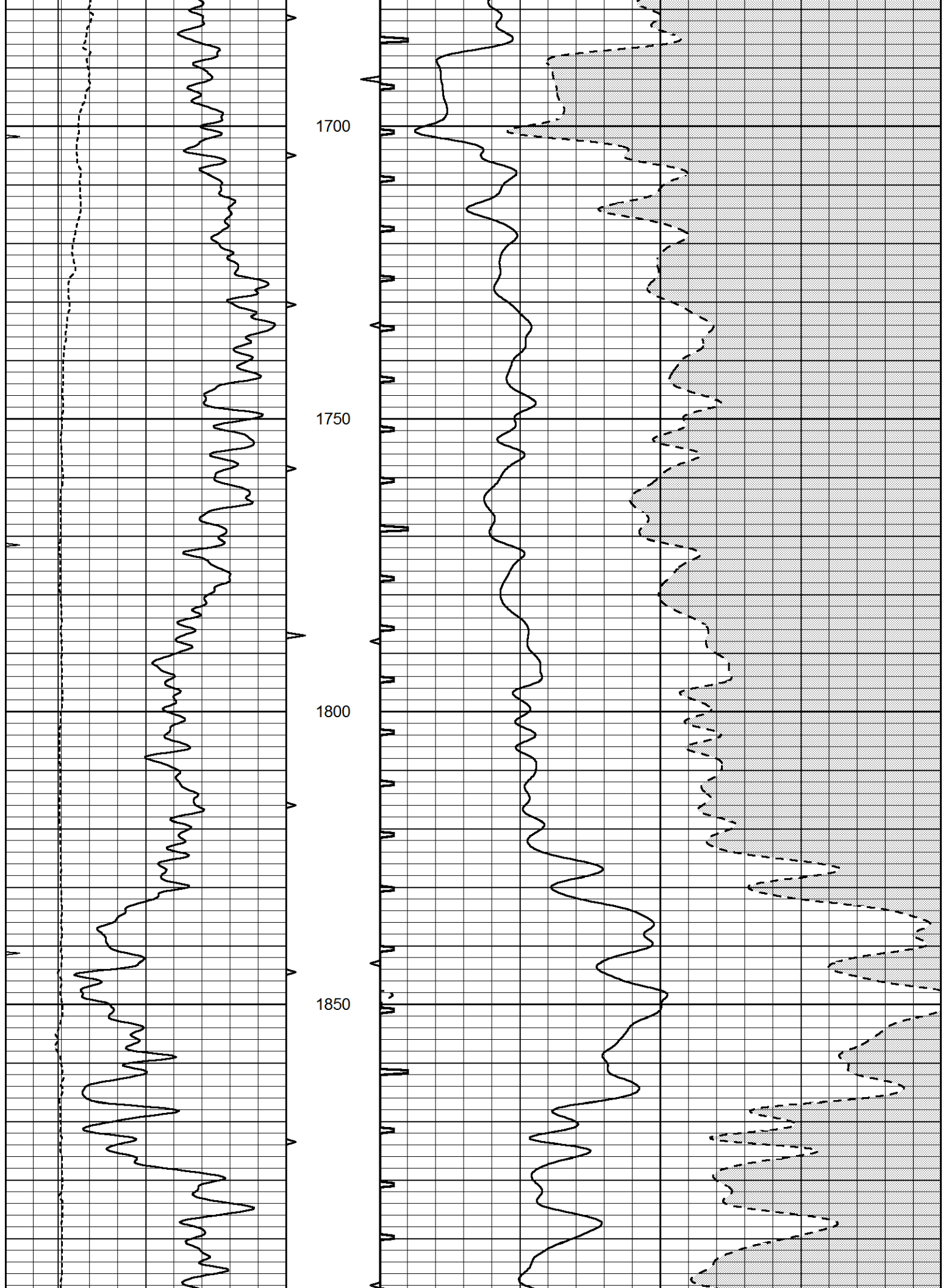
1500

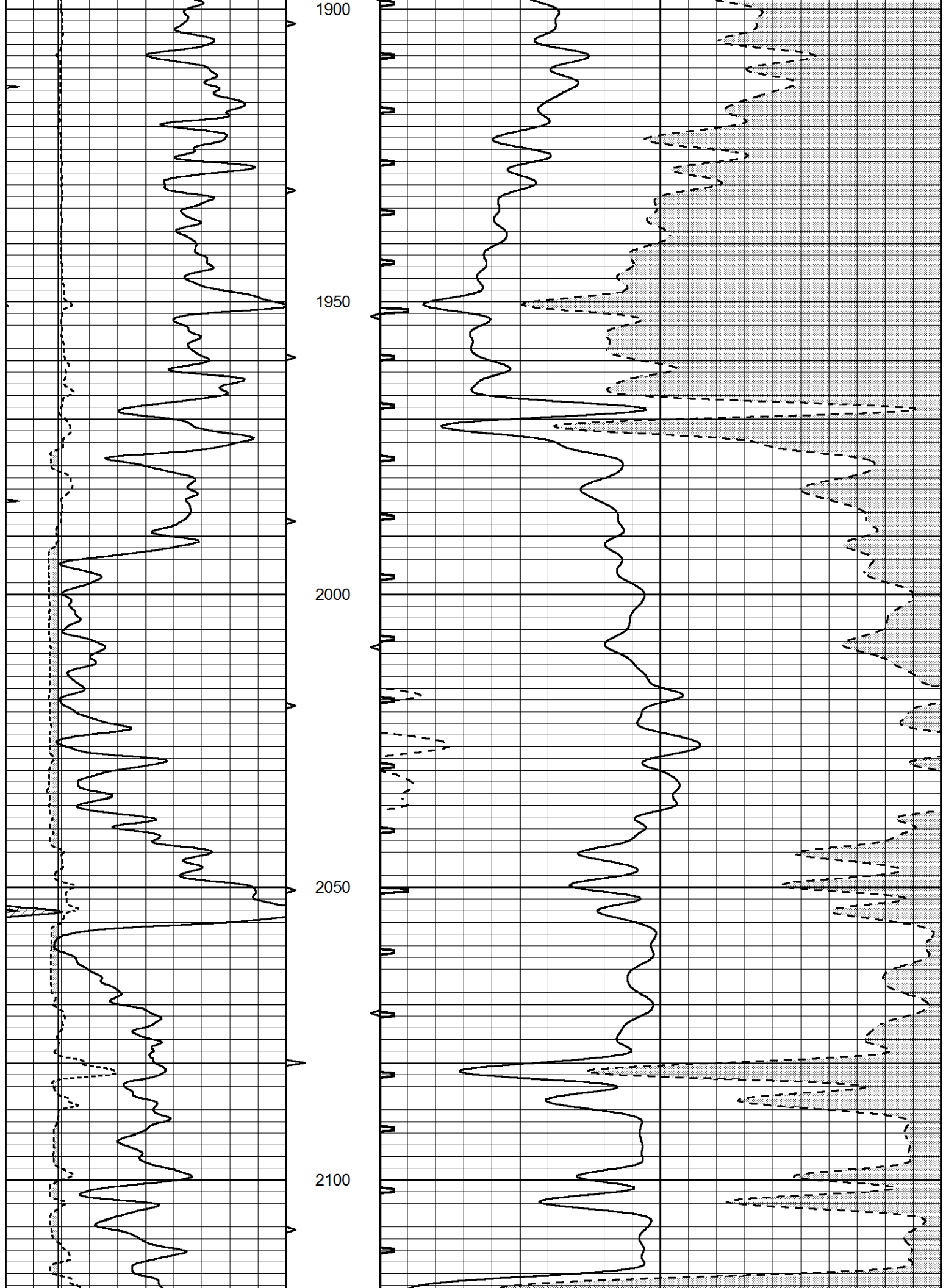
1550

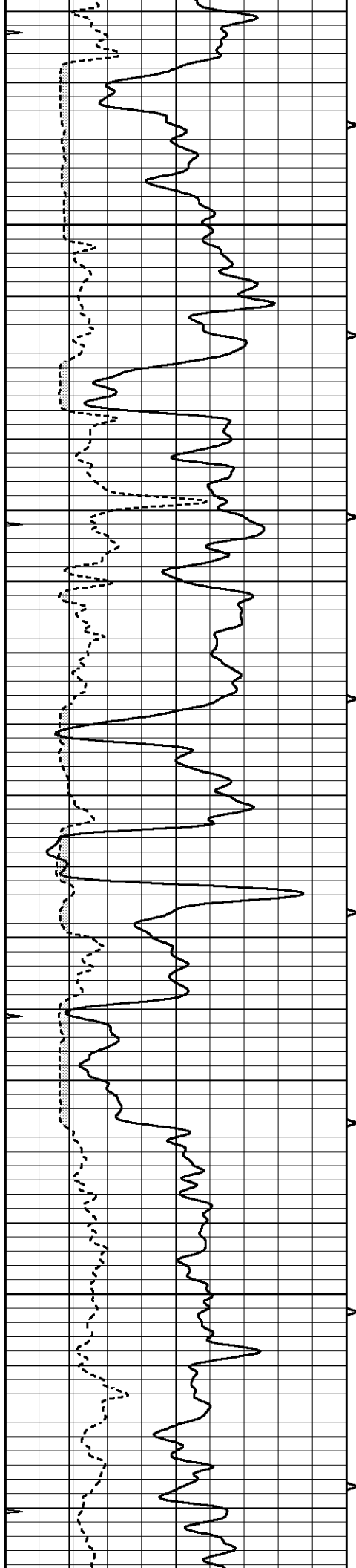
1600

1650







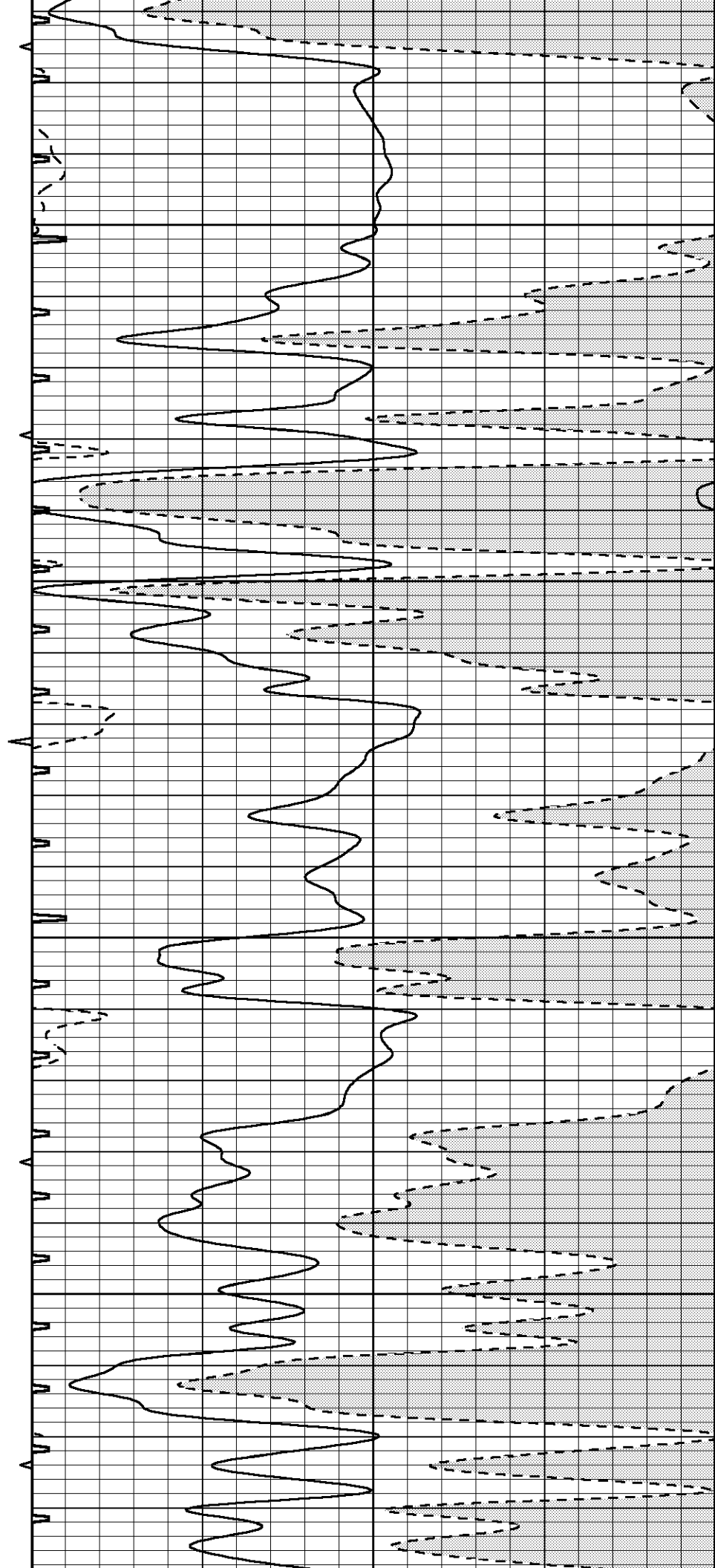


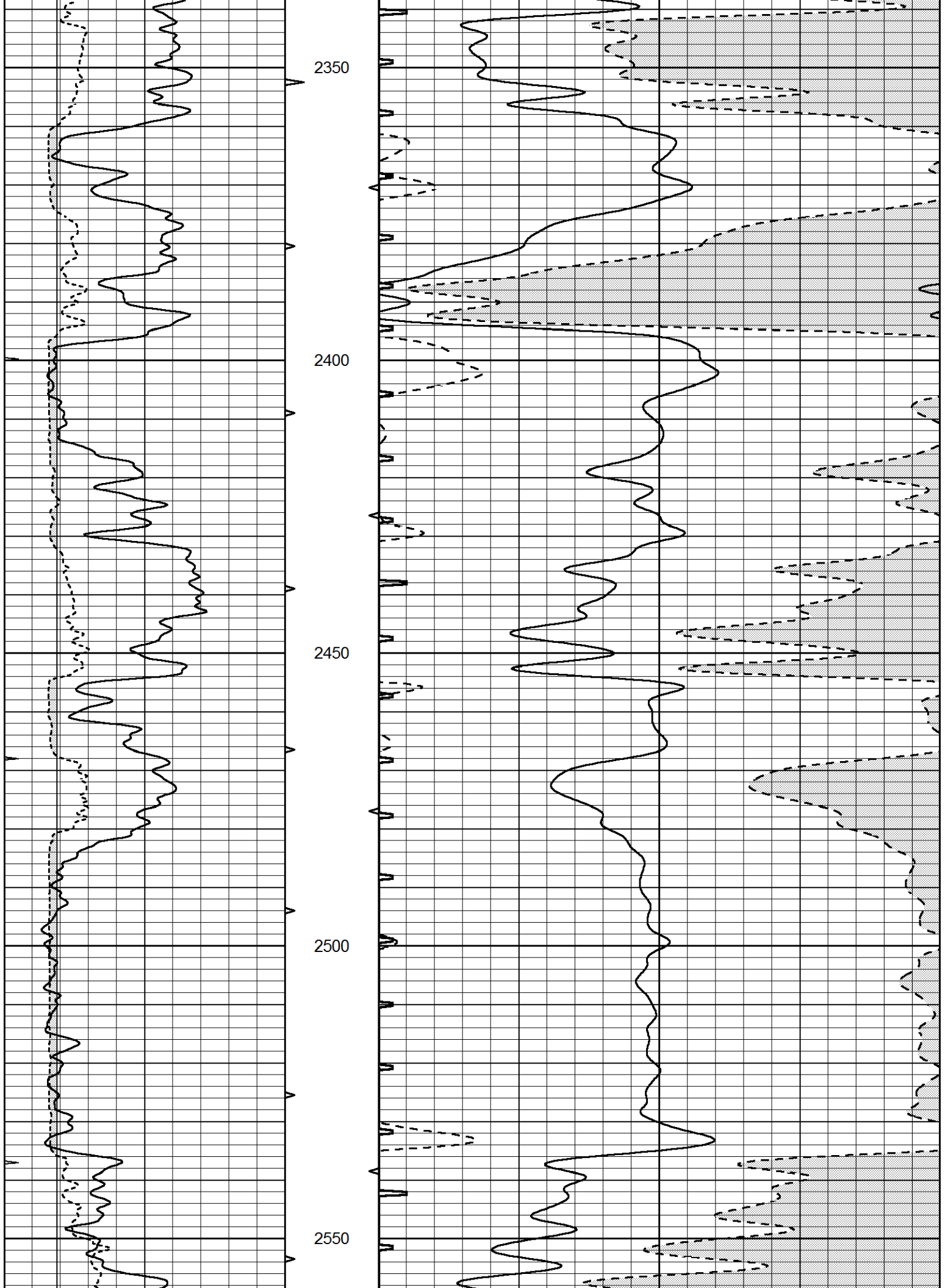
2150

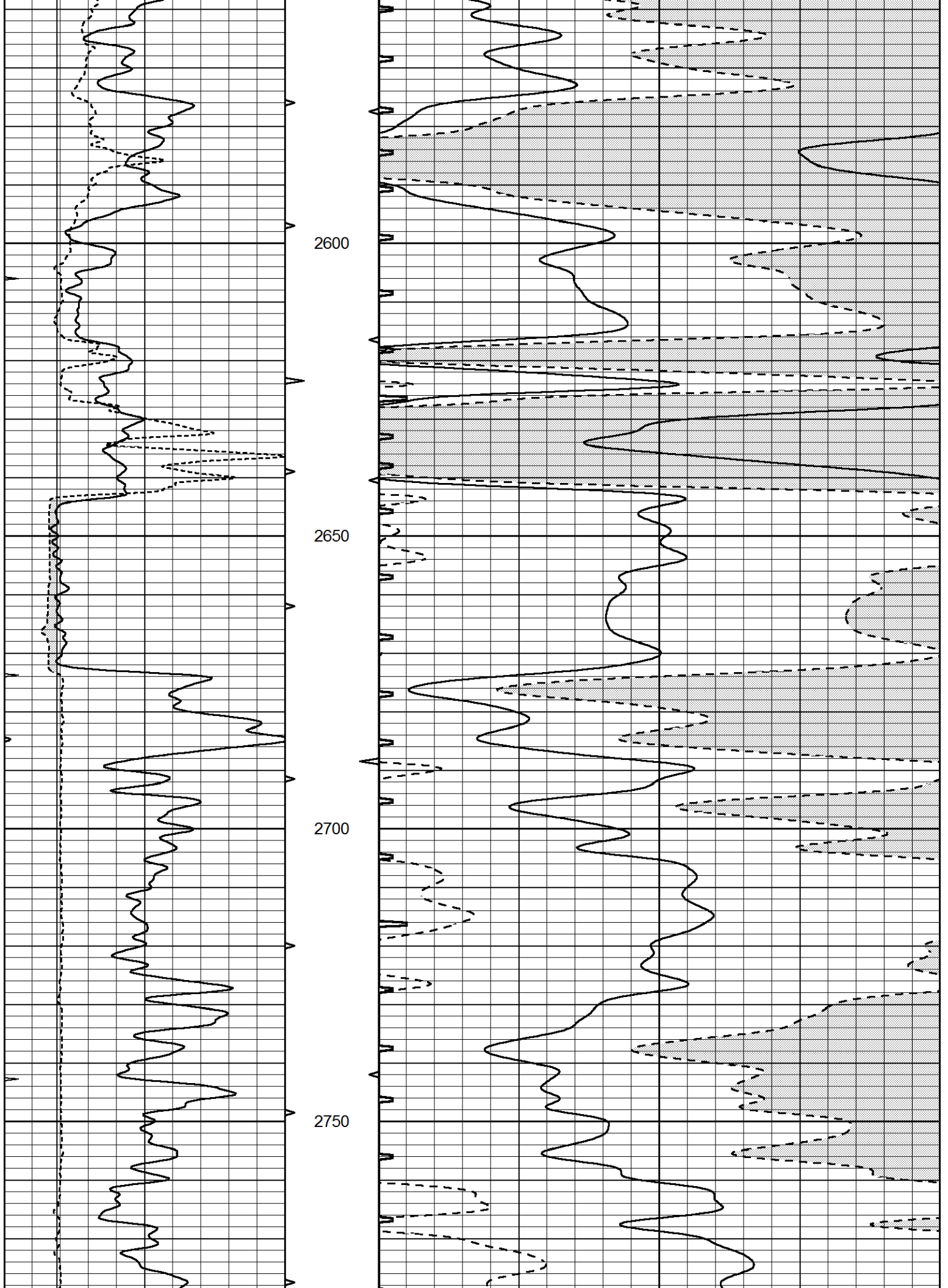
2200

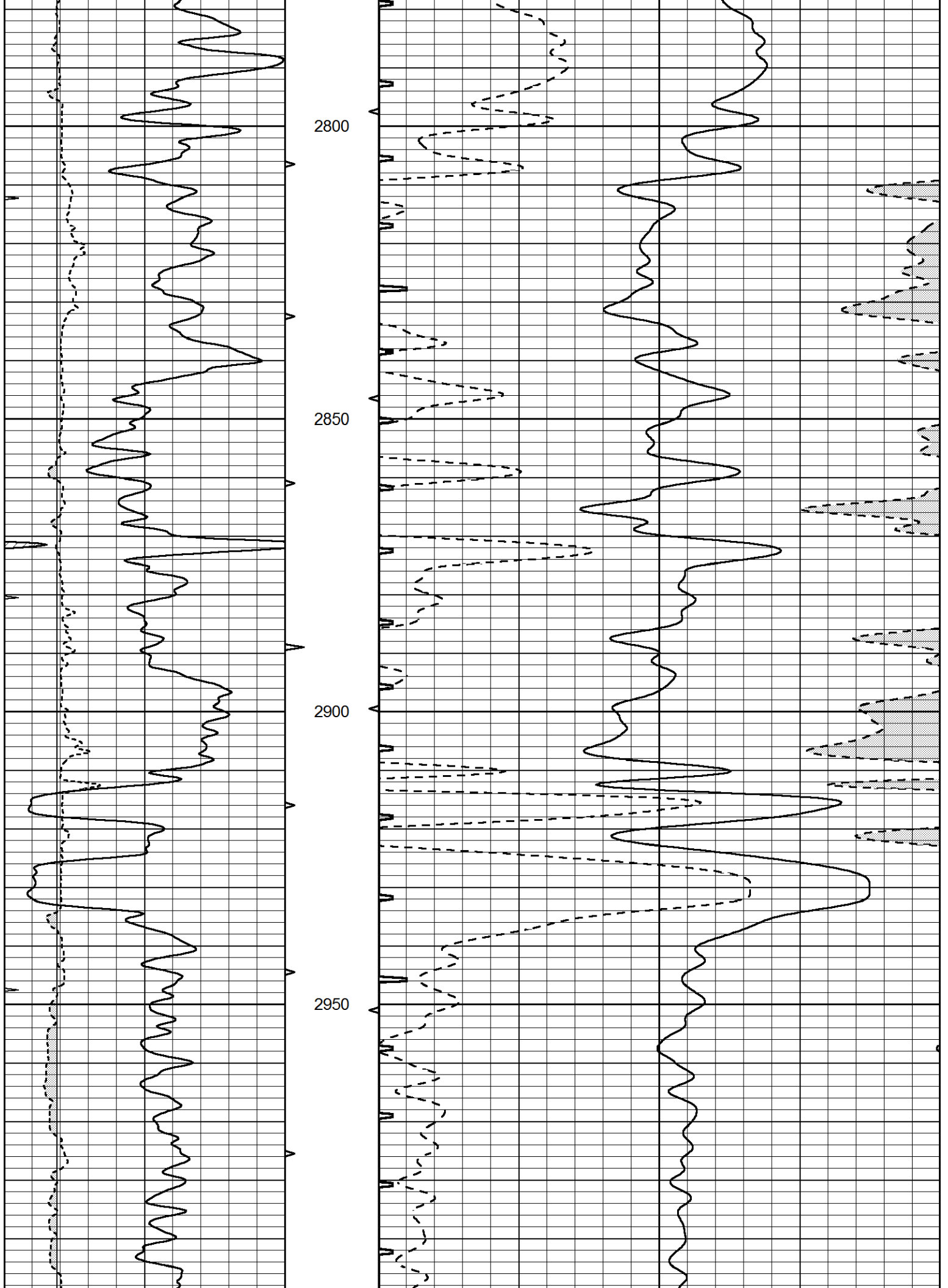
2250

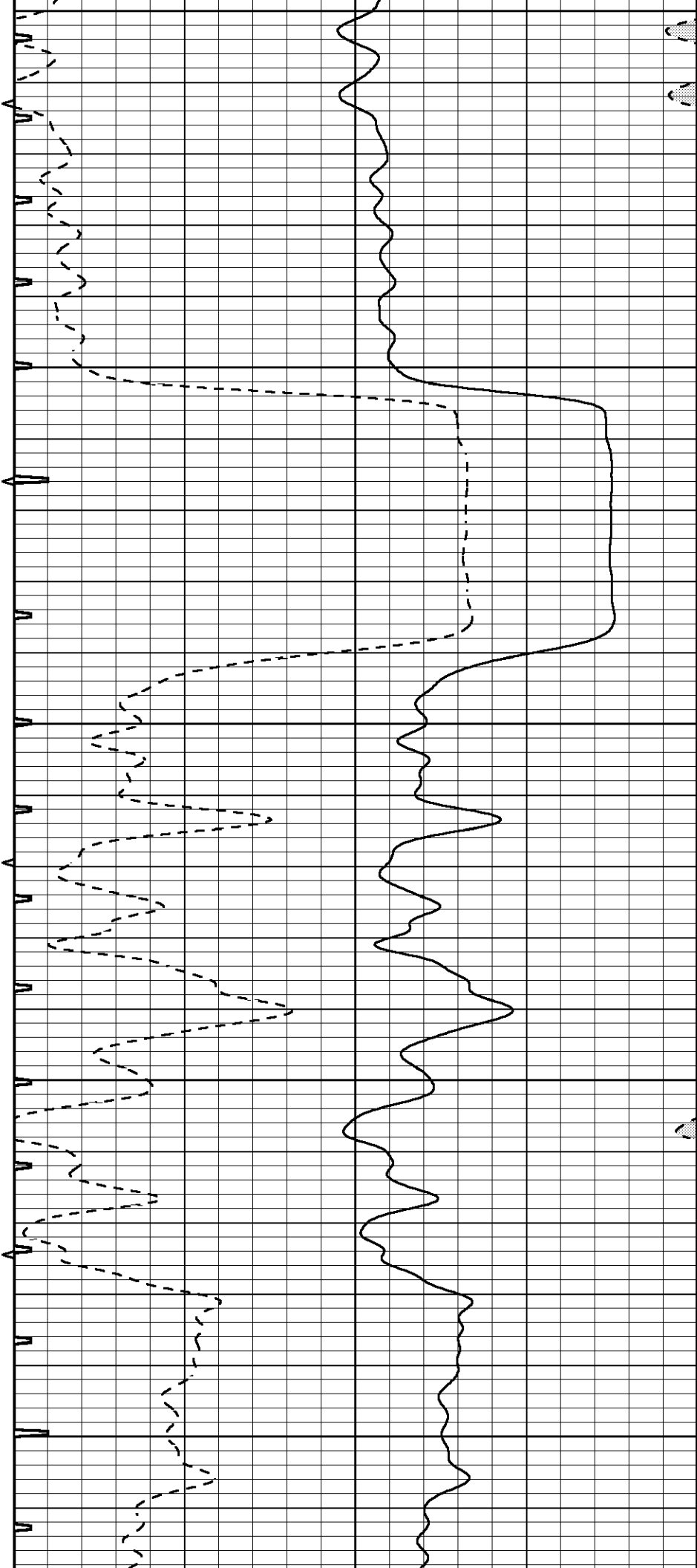
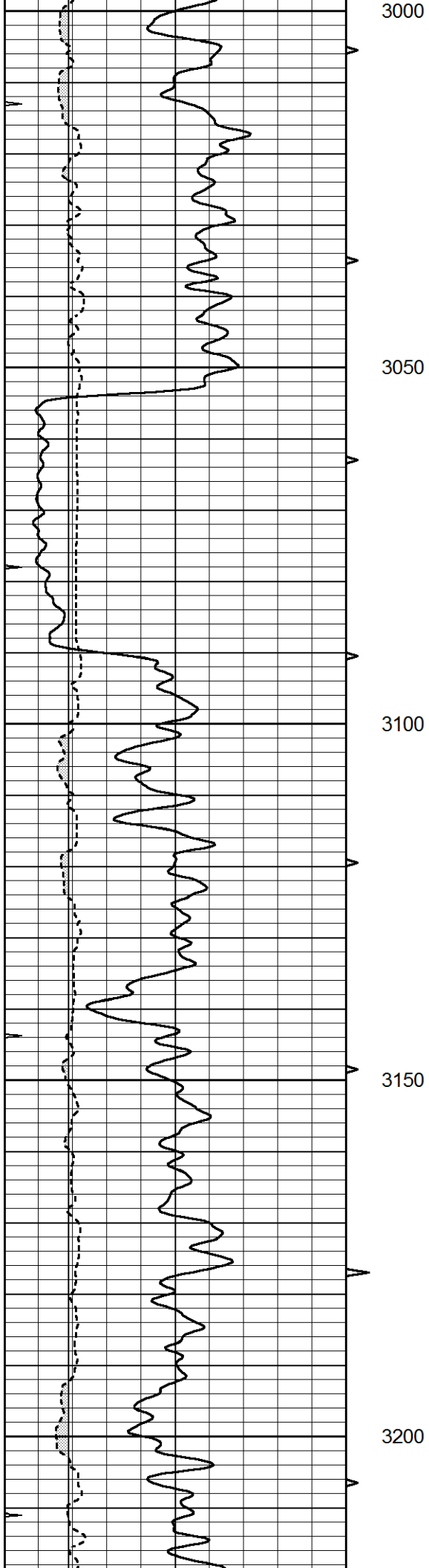
2300

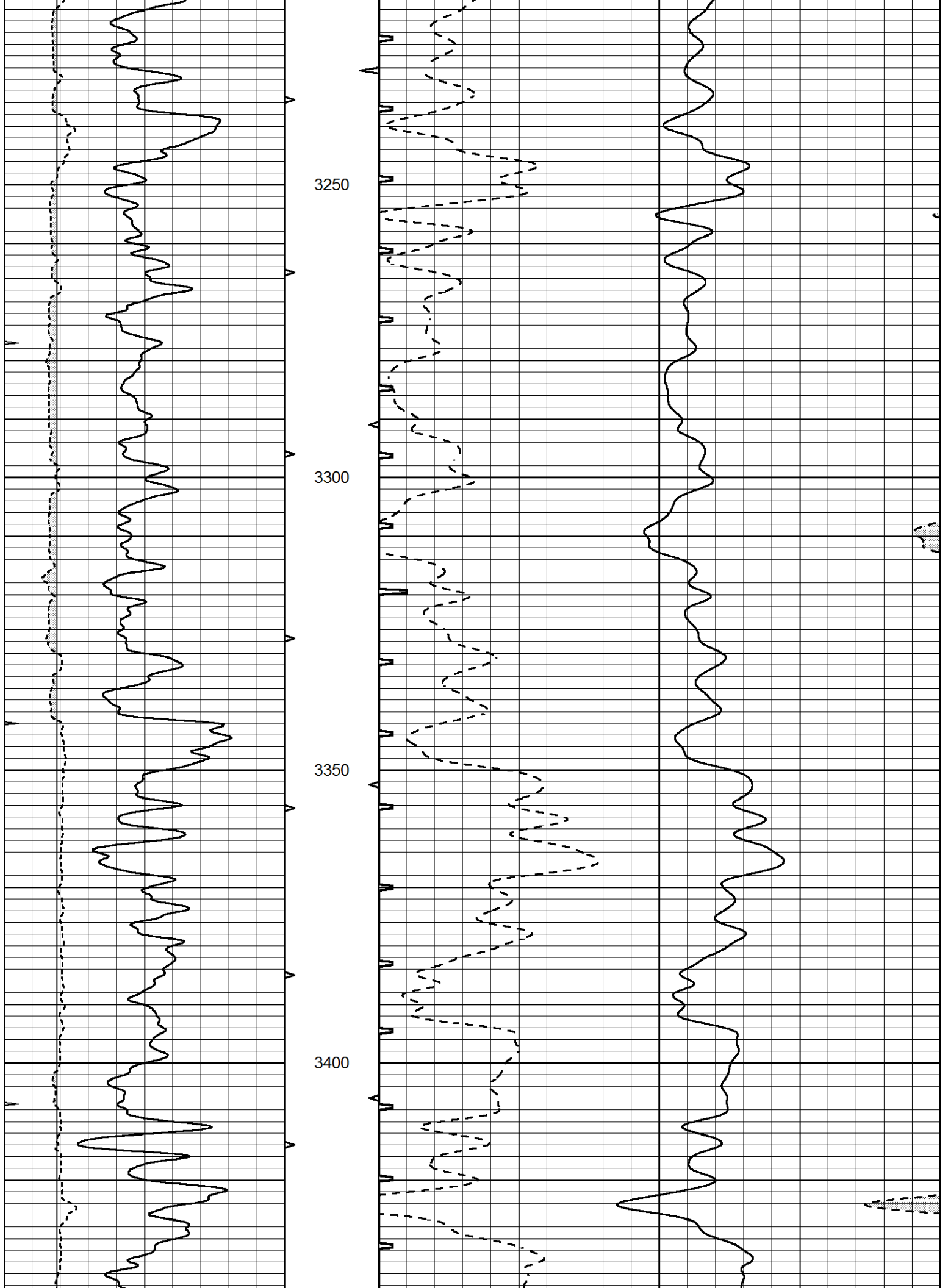


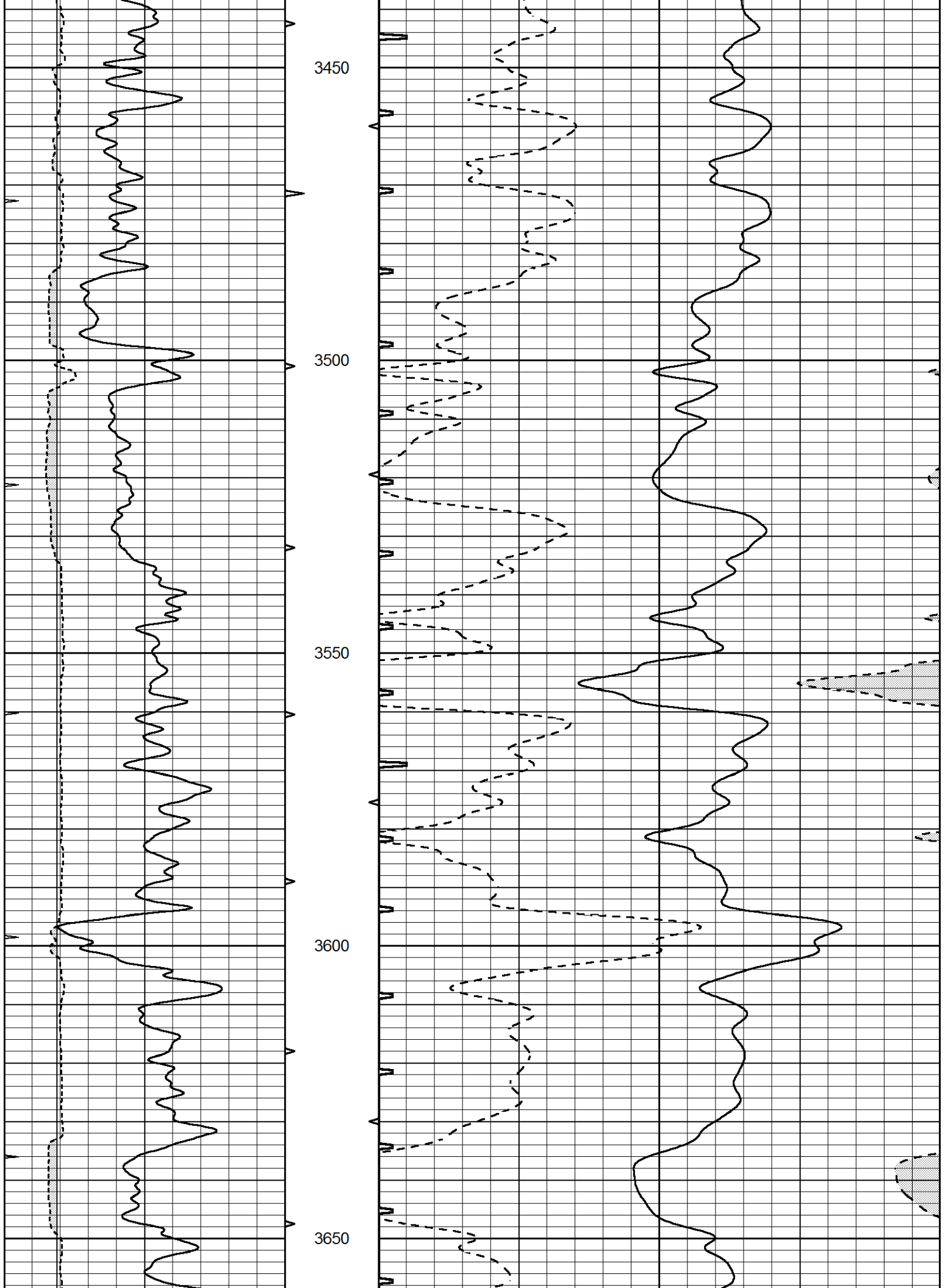


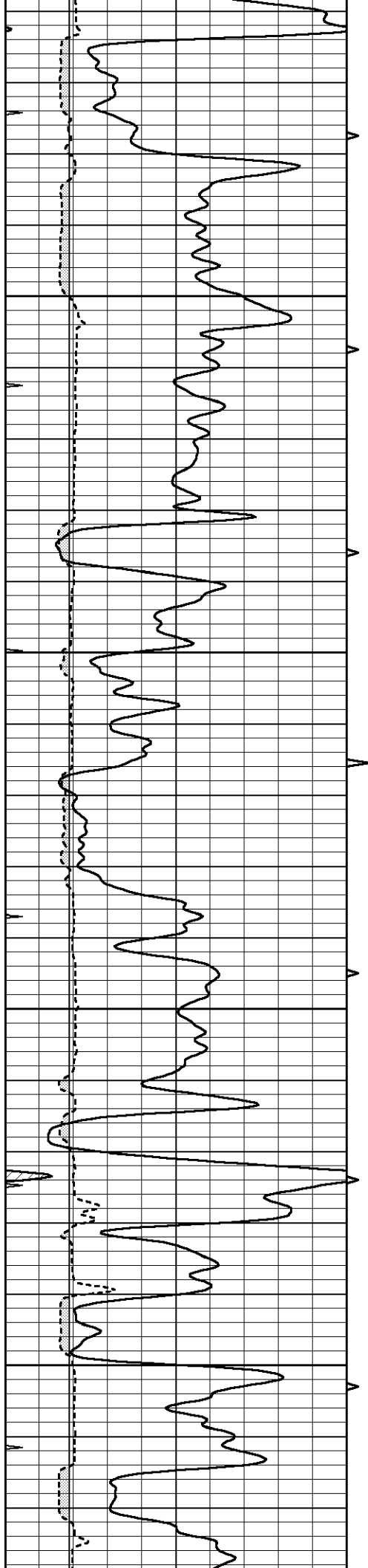










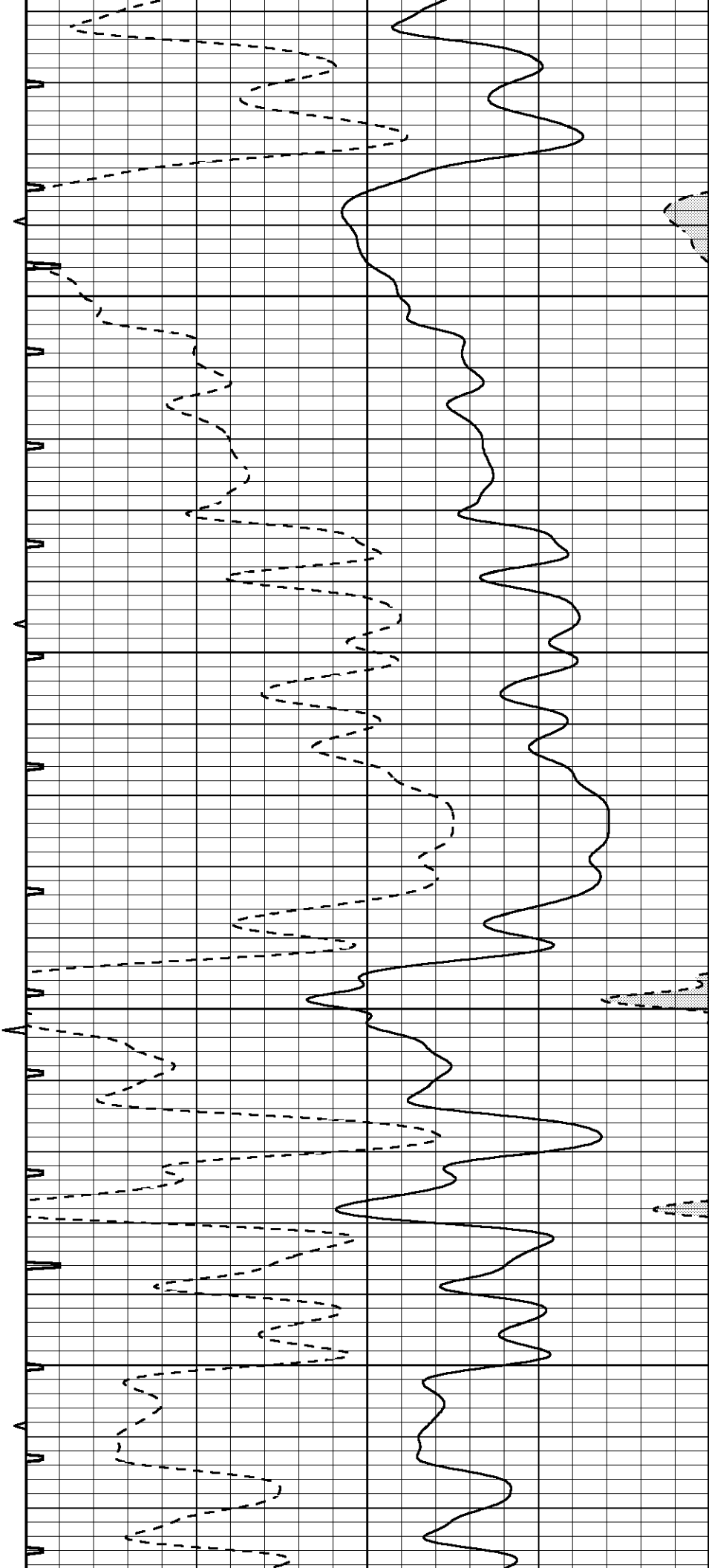


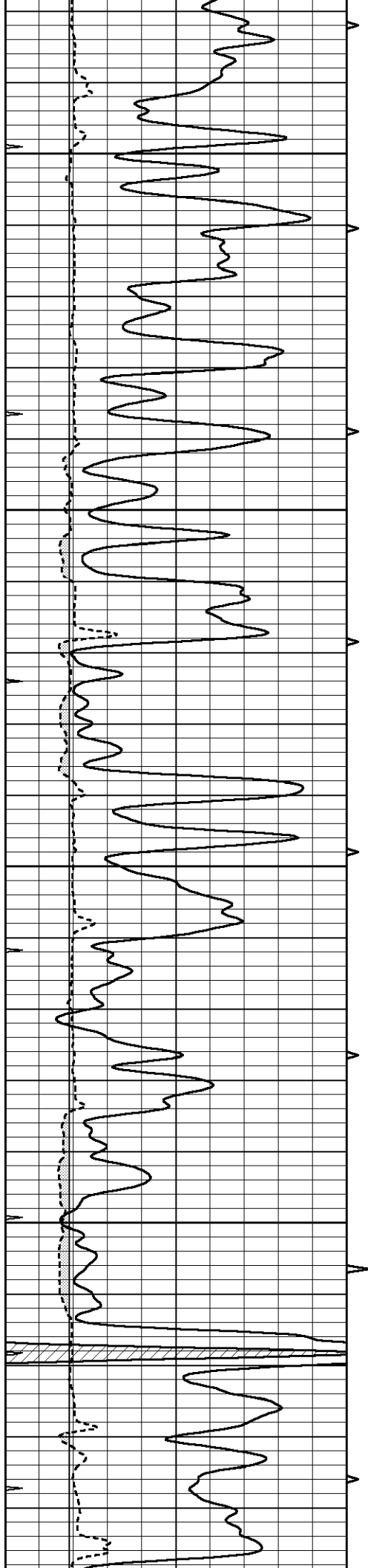
3700

3750

3800

3850



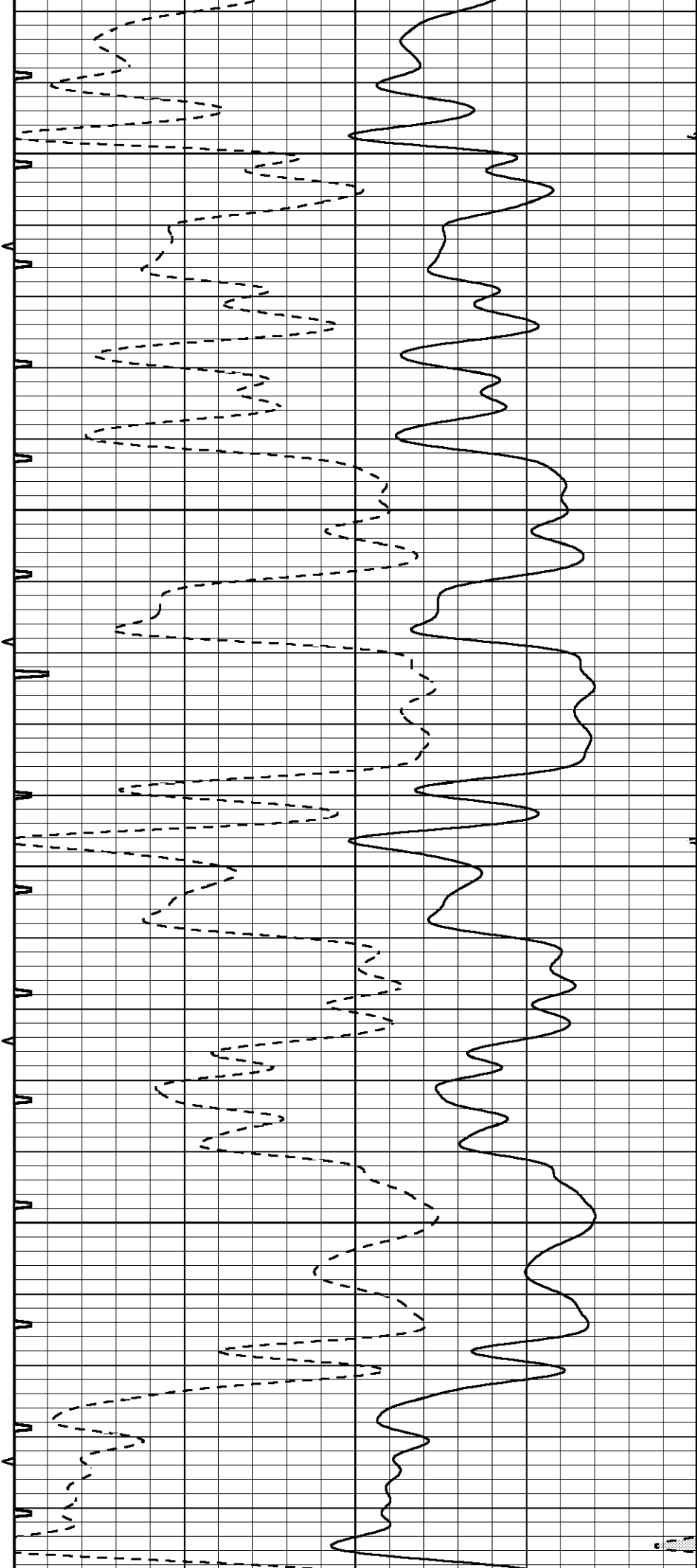


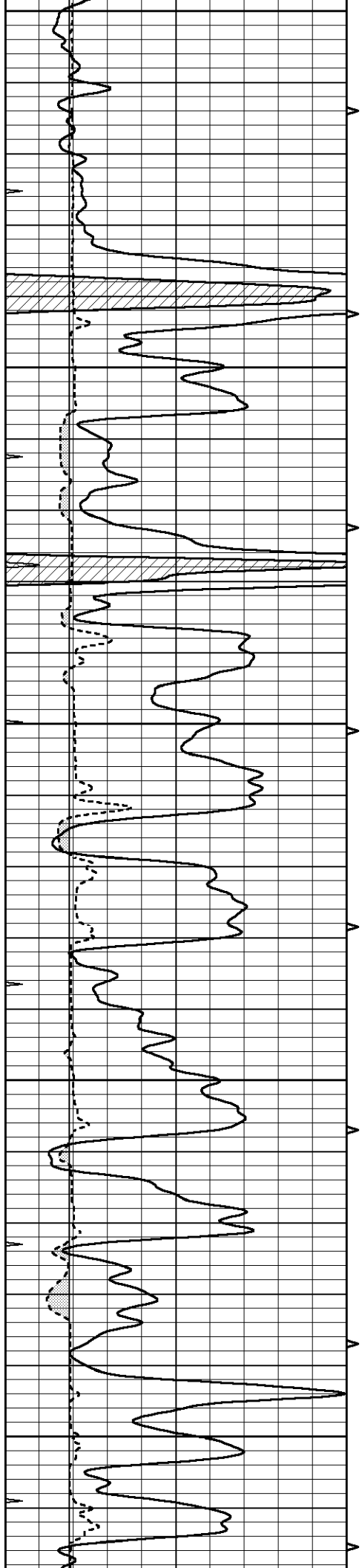
3900

3950

4000

4050





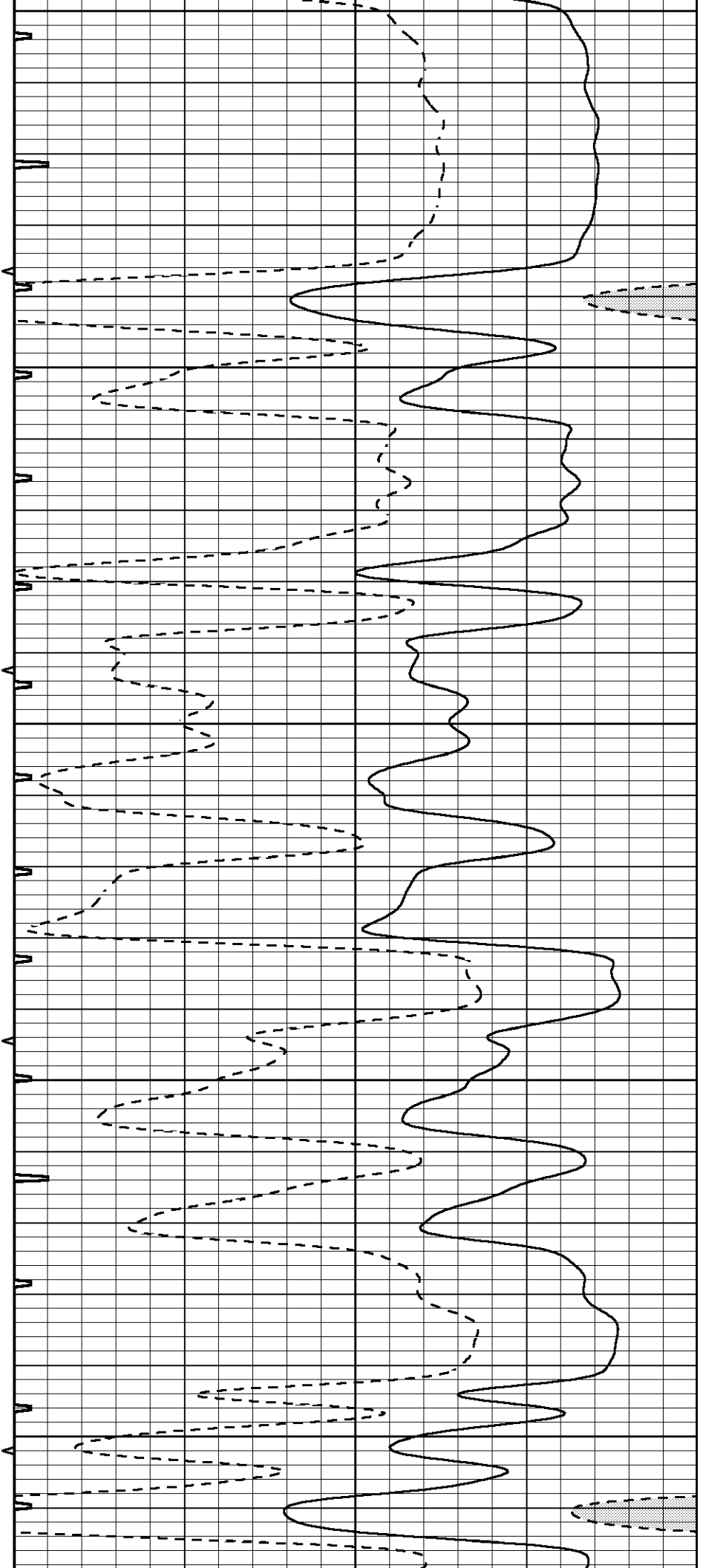
4100

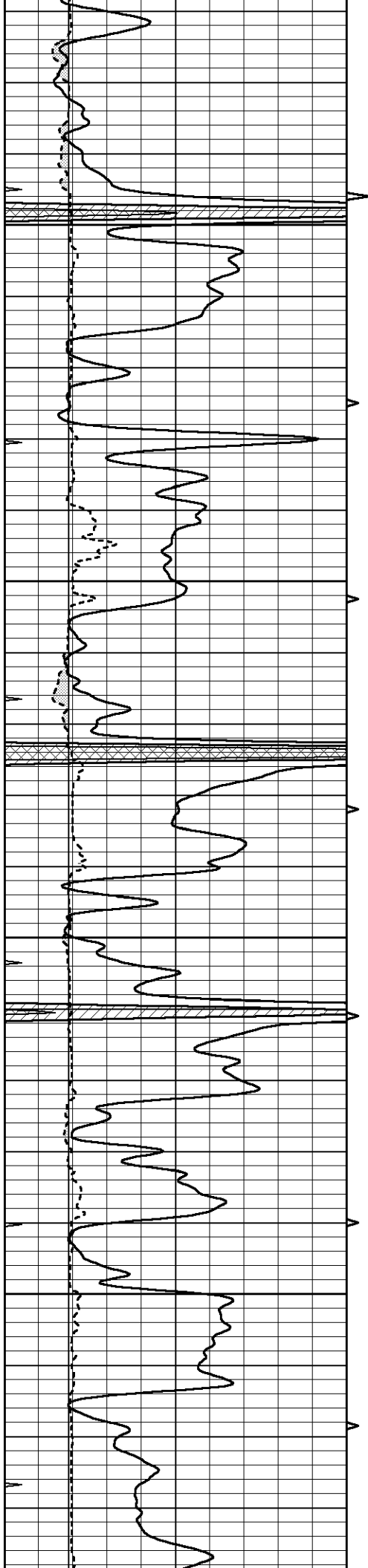
4150

4200

4250

4300



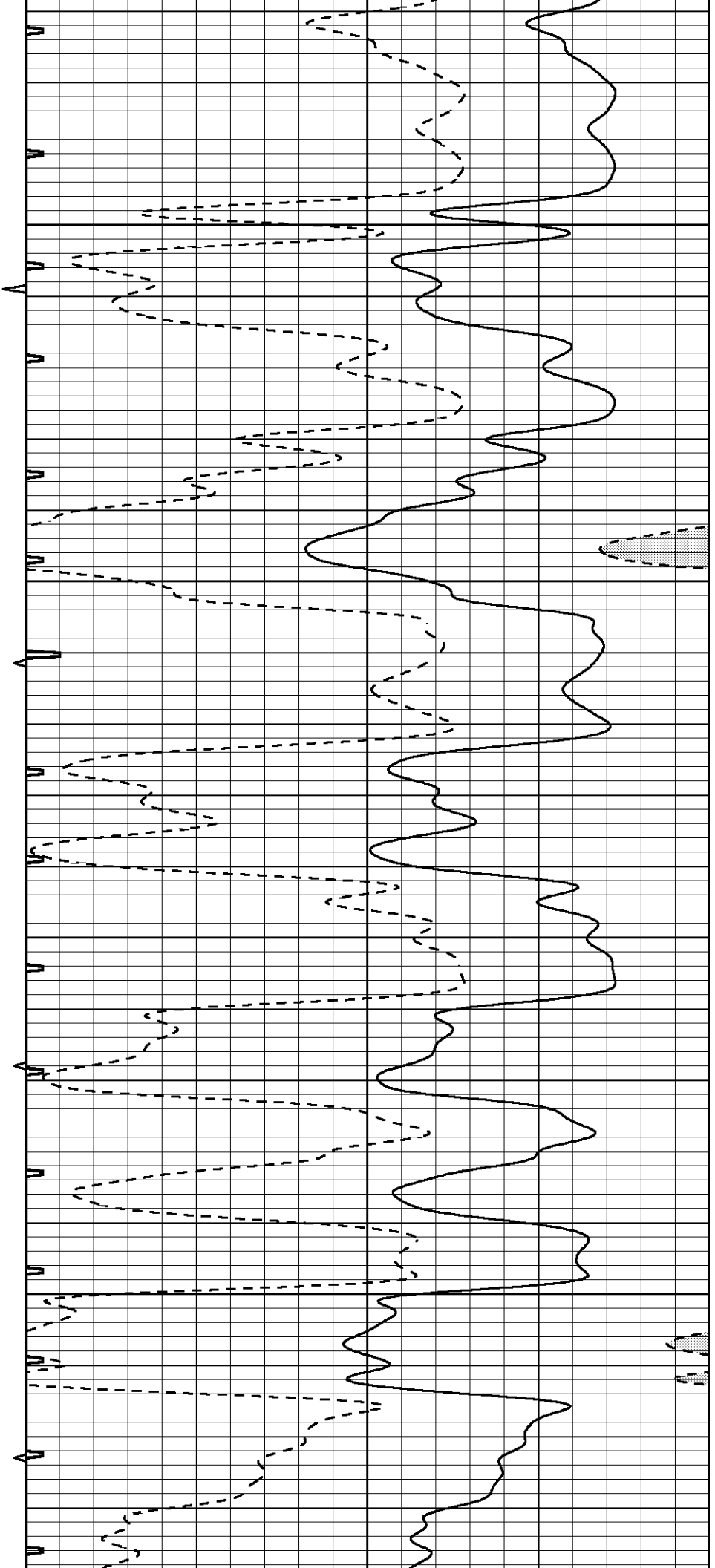


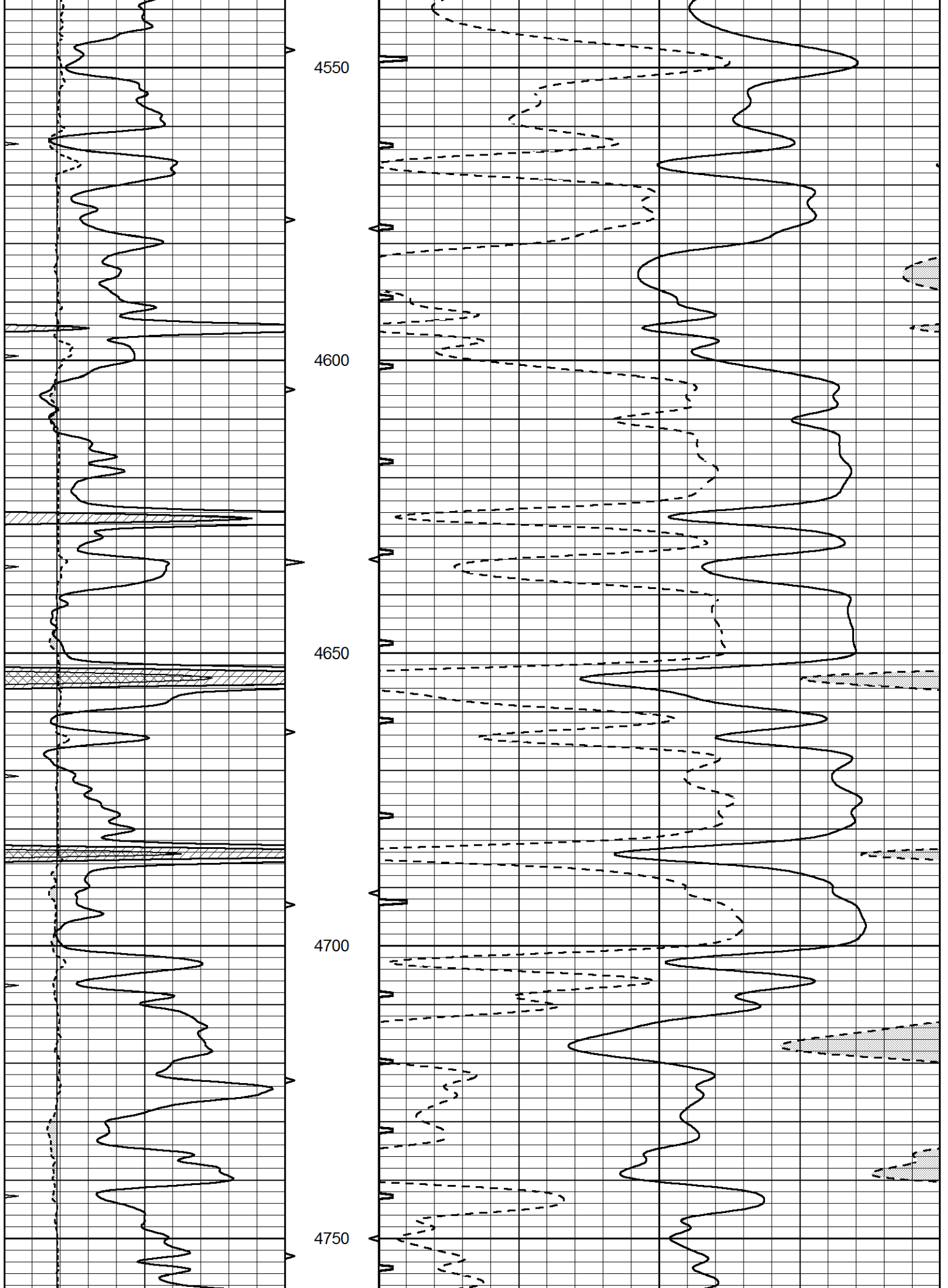
4350

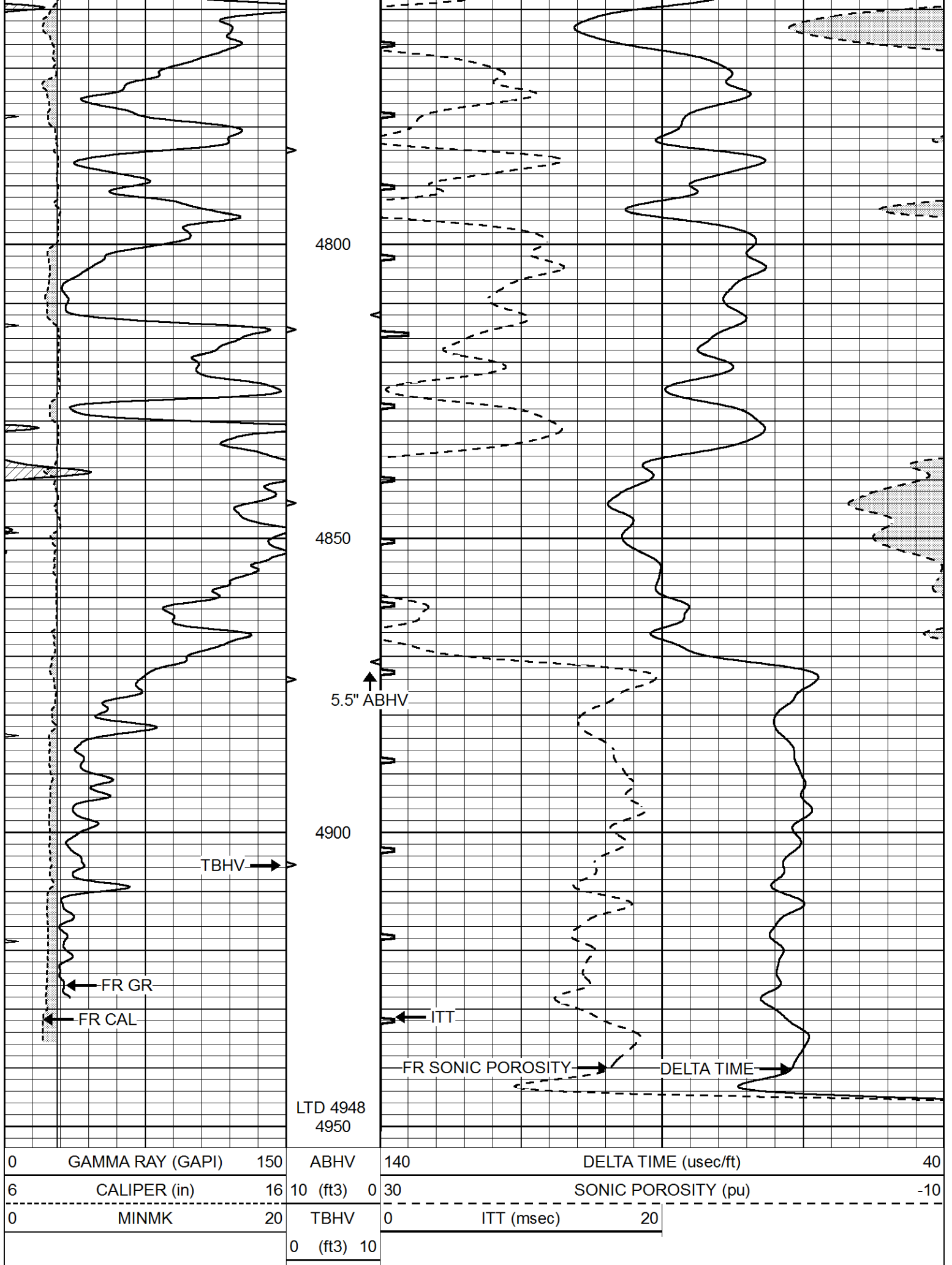
4400

4450

4500









REPEAT SECTION

Database File 5840ddn.db
 Dataset Pathname pass5.1
 Presentation Format slt
 Dataset Creation Sat Dec 04 22:05:44 2021
 Charted by Depth in Feet scaled 1:240

0	GAMMA RAY (GAPI)	150	ABHV	140	DELTA TIME (usec/ft)	40
6	CALIPER (in)	16	10 (ft3)	0	30	SONIC POROSITY (pu)
0	MINMK	20	TBHV	0	ITT (msec)	20
			0 (ft3)	10		

