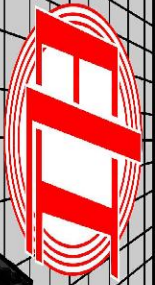


MICRO LOG



Company DOWNING - NELSON OIL CO., INC.
 Well CHARLENE #1-17
 Field UNNAMED
 County RAWLINS
 State KANSAS

Company DOWNING - NELSON OIL COMPANY, INC.
 Well CHARLENE #1-17
 Field UNNAMED
 County RAWLINS State KANSAS

Location: 2310' FSL & 835' FWL
 W/2 - NE - NW - SW
 API #: 15-153-21272-0000
 Permanent Datum GROUND LEVEL Elevation 3345
 Log Measured From KELLY BUSHING 8' A.G.L.
 Drilling Measured From KELLY BUSHING
 SEC 17 TWP 5S RGE 36W
 Other Services CDL/CNL DIL/SON
 Elevation K.B. 3353 D.F. 3351 G.L. 3345

Date	12/4/21
Run Number	TWO
Depth Driller	4946
Depth Logger	4948
Bottom Logged Interval	4932
Top Log Interval	3500
Casing Driller	8 5/8"@446'
Casing Logger	446
Bit Size	7 7/8"
Type Fluid in Hole	CHEMICAL MUD
Density / Viscosity	9.3/60
pH / Fluid Loss	9.5/8.4
Source of Sample	FLOWLINE
Rm @ Meas. Temp	1.75@92F
Rmf @ Meas. Temp	1.31@92F
Rmc @ Meas. Temp	2.10@92F
Source of Rmf / Rmc	MEASUREMENT
Rm @ BHT	1.29@125F
Time Circulation Stopped	4 HOURS
Time Logger on Bottom	9:30 P.M.
Maximum Recorded Temperature	125F
Equipment Number	922339
Location	HAYS, KANSAS
Recorded By	JEFF LUEBBERS
Witnessed By	MARC DOWNING

<<< Fold Here >>>

All interpretations are opinions based on inferences from electrical or other measurements and we cannot and do not guarantee the accuracy or correctness of any interpretation, and we shall not, except in the case of gross or willful negligence on our part, be liable or responsible for any loss, costs, damages, or expenses incurred or sustained by anyone resulting from any interpretation made by any of our officers, agents or employees. These interpretations are also subject to our general terms and conditions set out in our current Price Schedule.

15-153-21272-0000 Comments

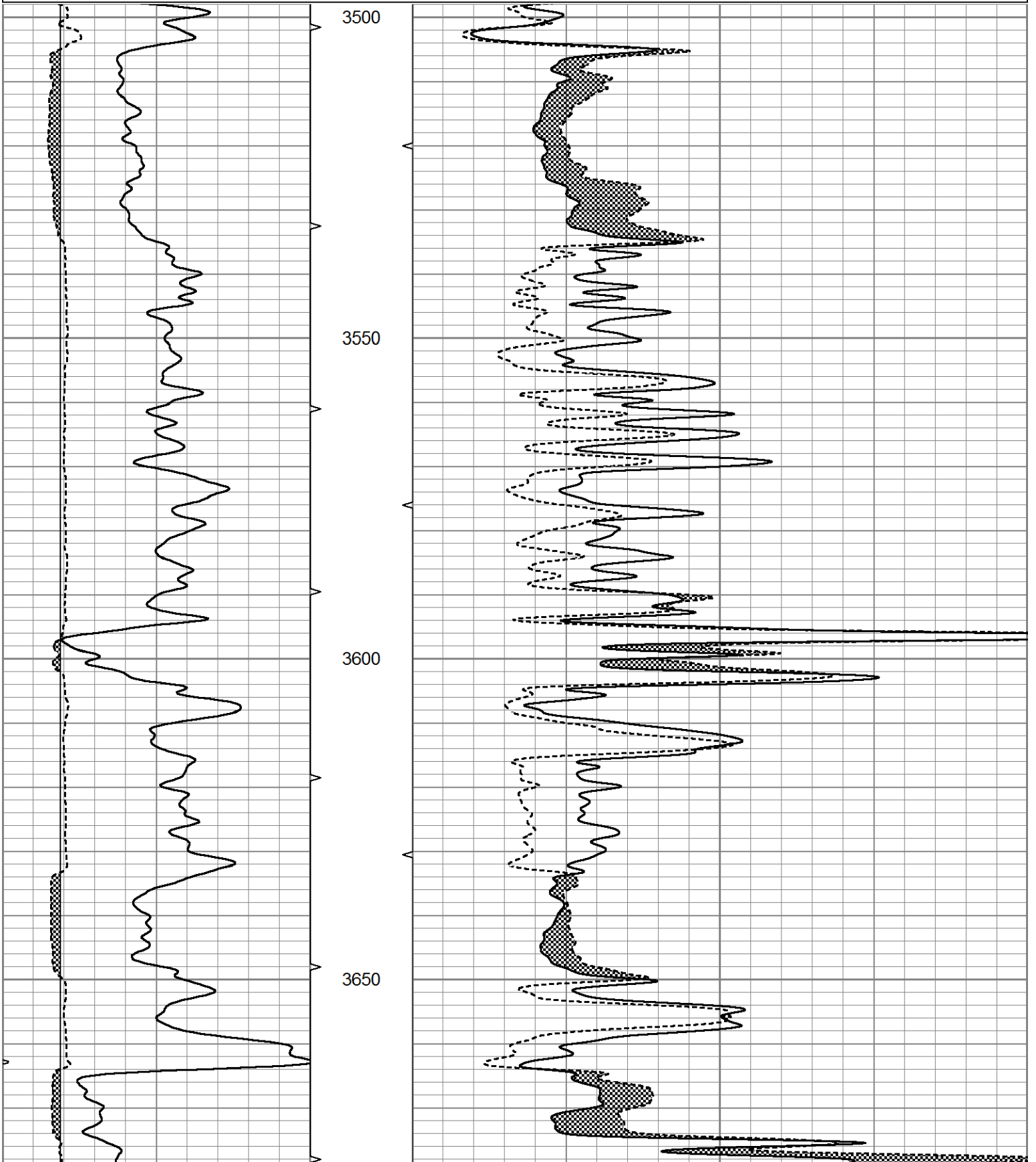
THANK YOU FOR USING ELI WIRELINE HAYS, KANSAS (785) 628-6395
 DIRECTIONS
 BREWSTER, KS., N. ON BLKTOP TO CURVE WEST, THEN 3N., 1/2W., N. INTO

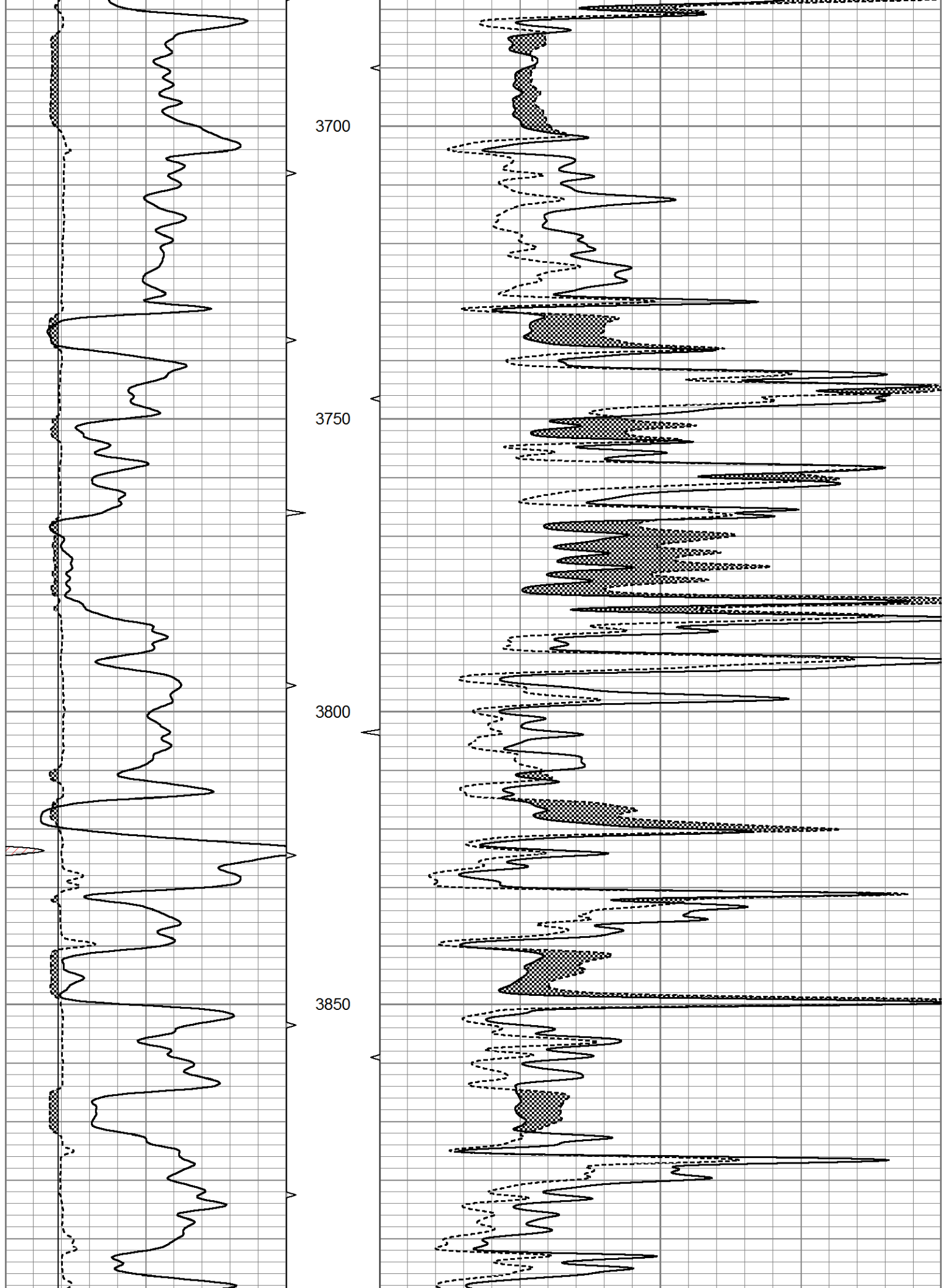


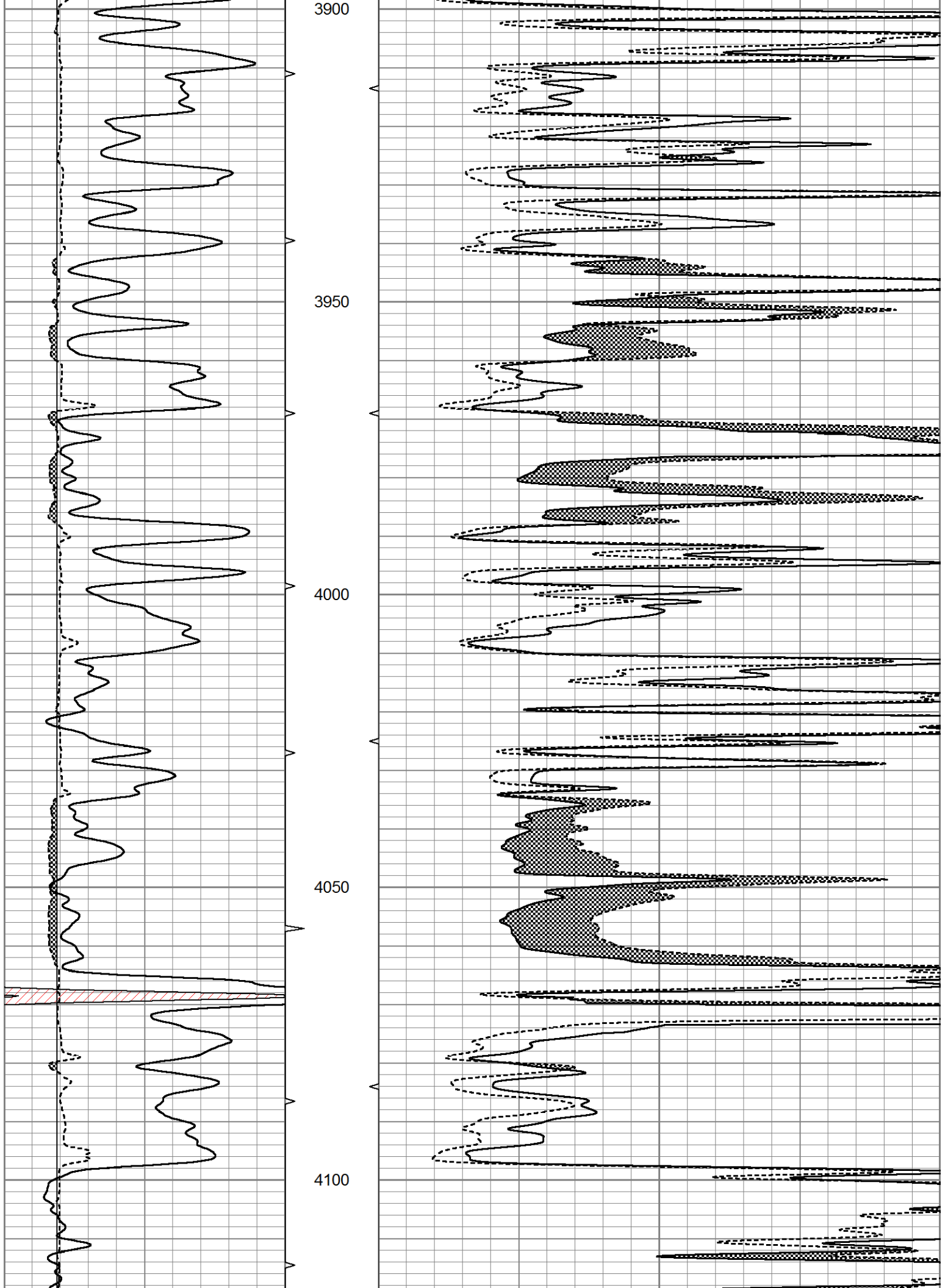
MAIN SECTION

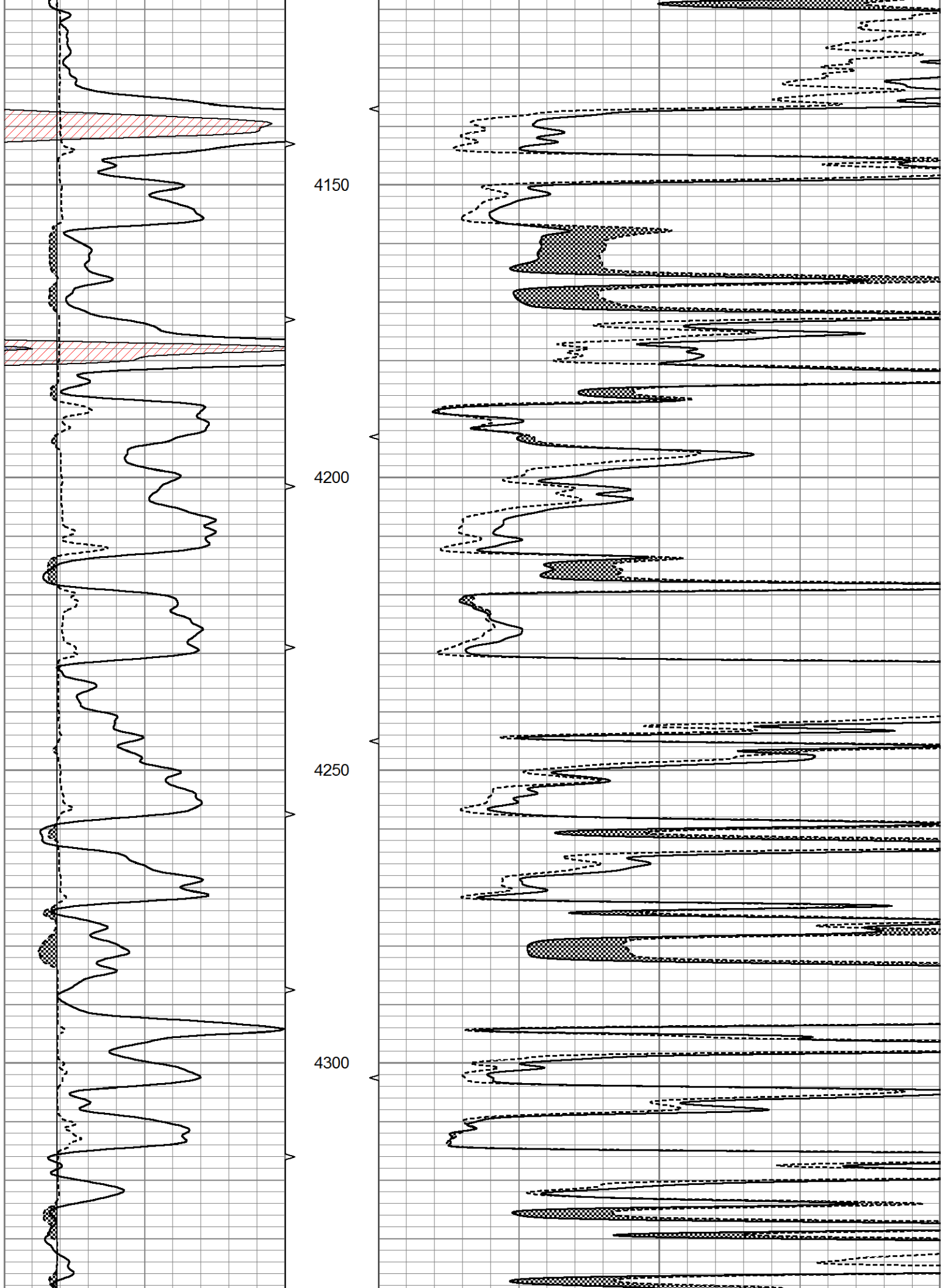
Database File 5840ddn.db
 Dataset Pathname pass6.2
 Presentation Format micro
 Dataset Creation Sat Dec 04 23:03:29 2021
 Charted by Depth in Feet scaled 1:240

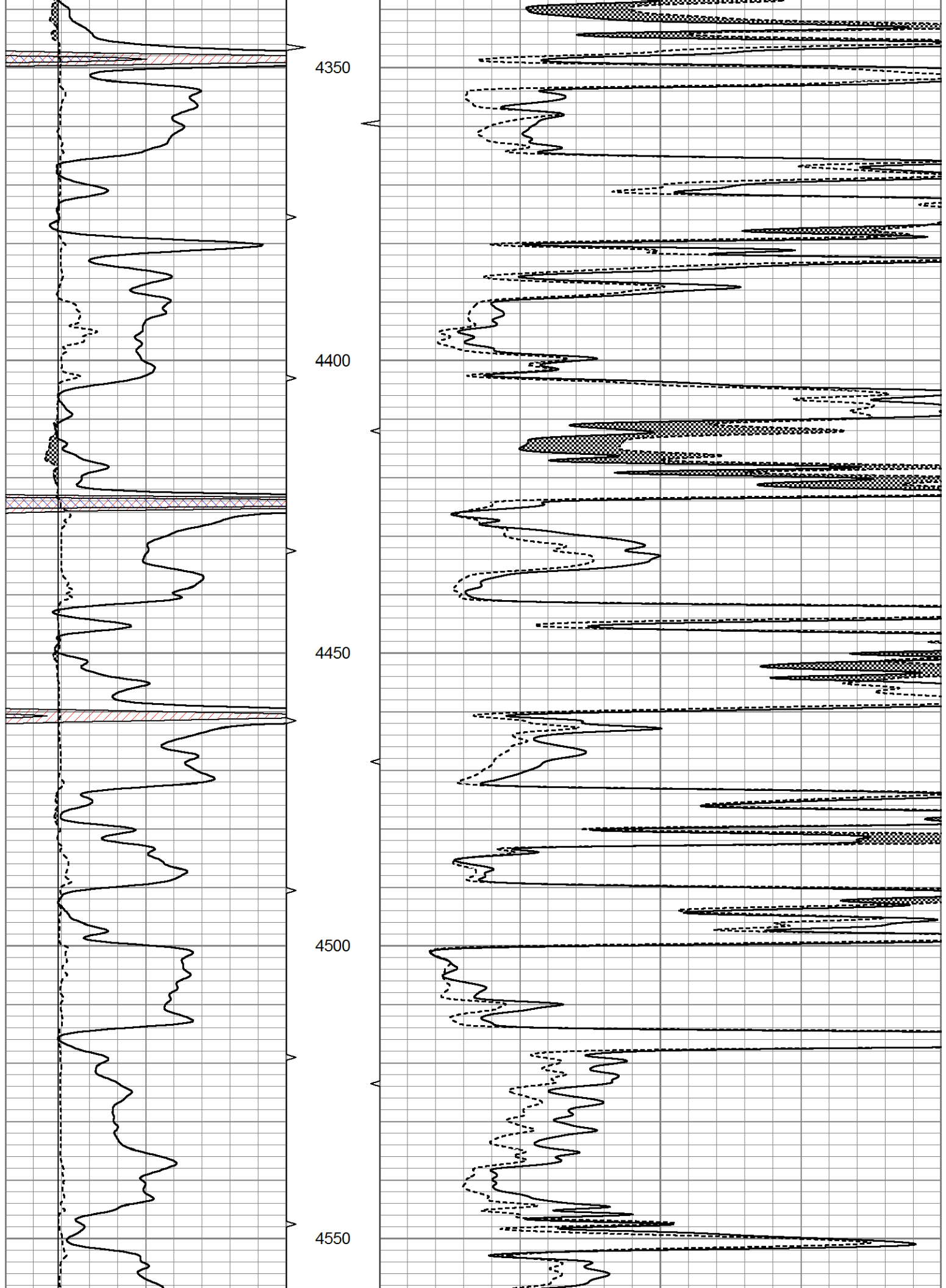
0	GR (GAPI)	150	ABHV	0	MEL20 (Ohm-m)	40
6	MELCAL (in)	16	10 (ft3)	0	MEL15 (Ohm-m)	40
			ABHV			
			0 (ft3)	10		

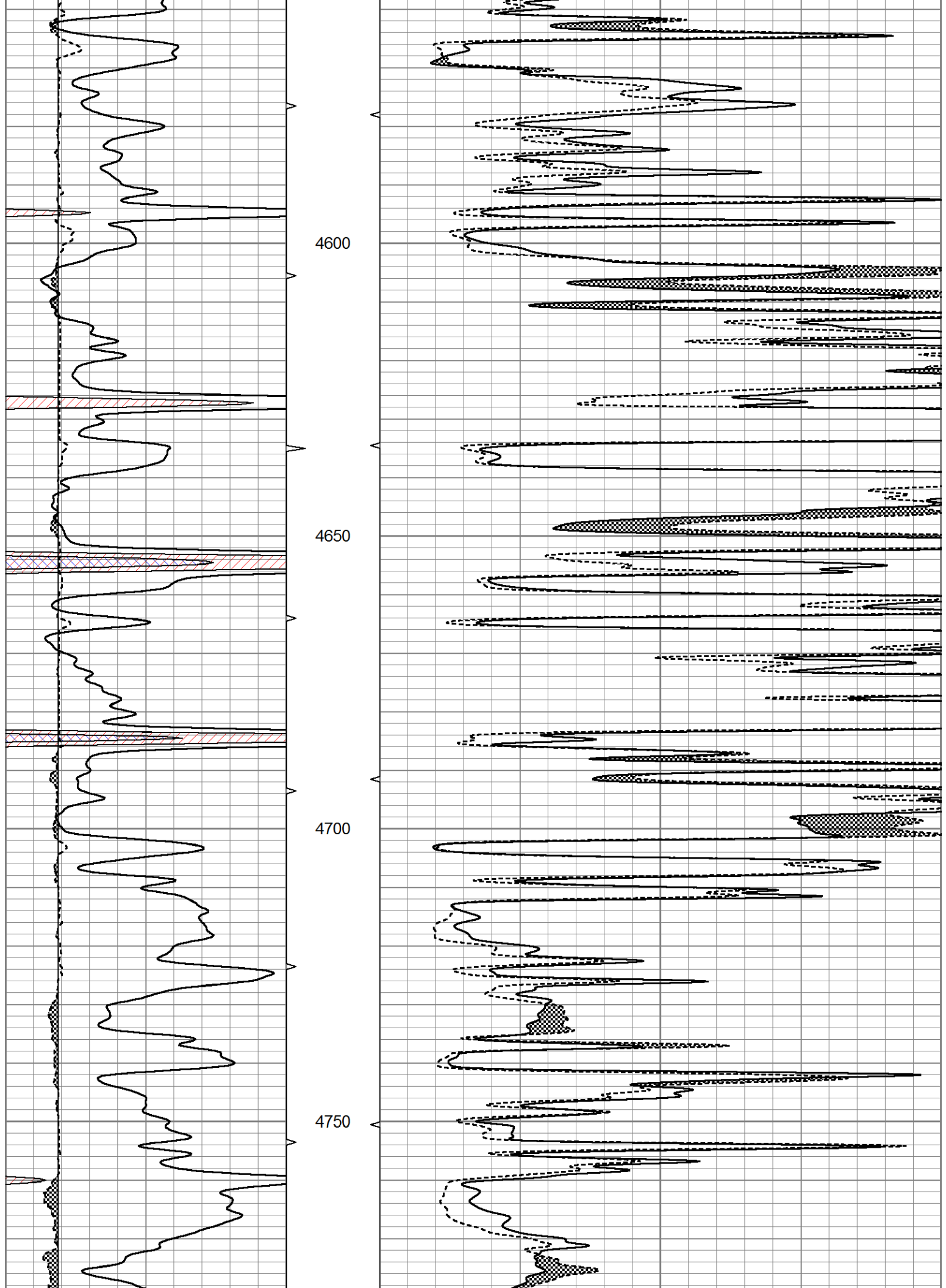


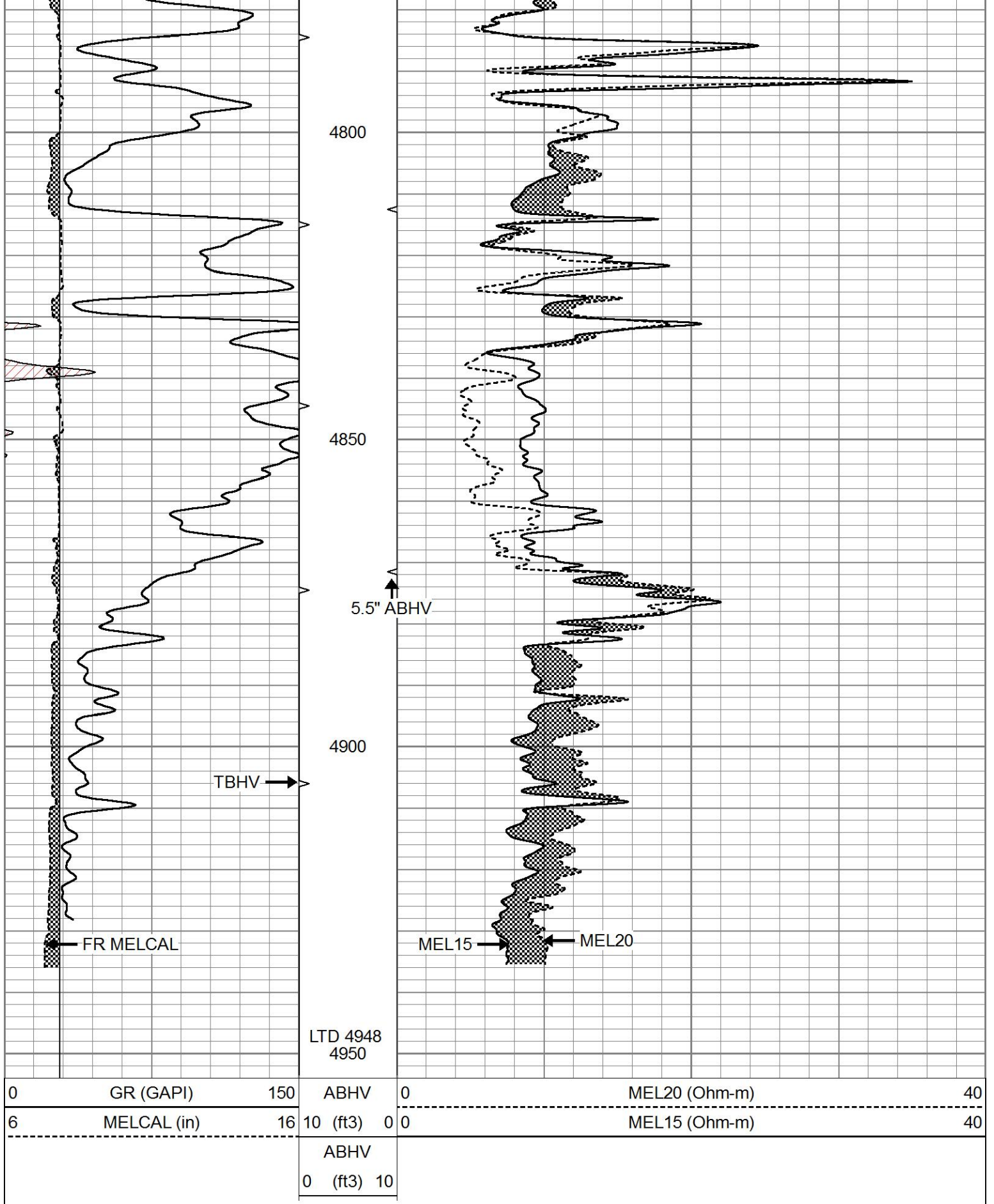








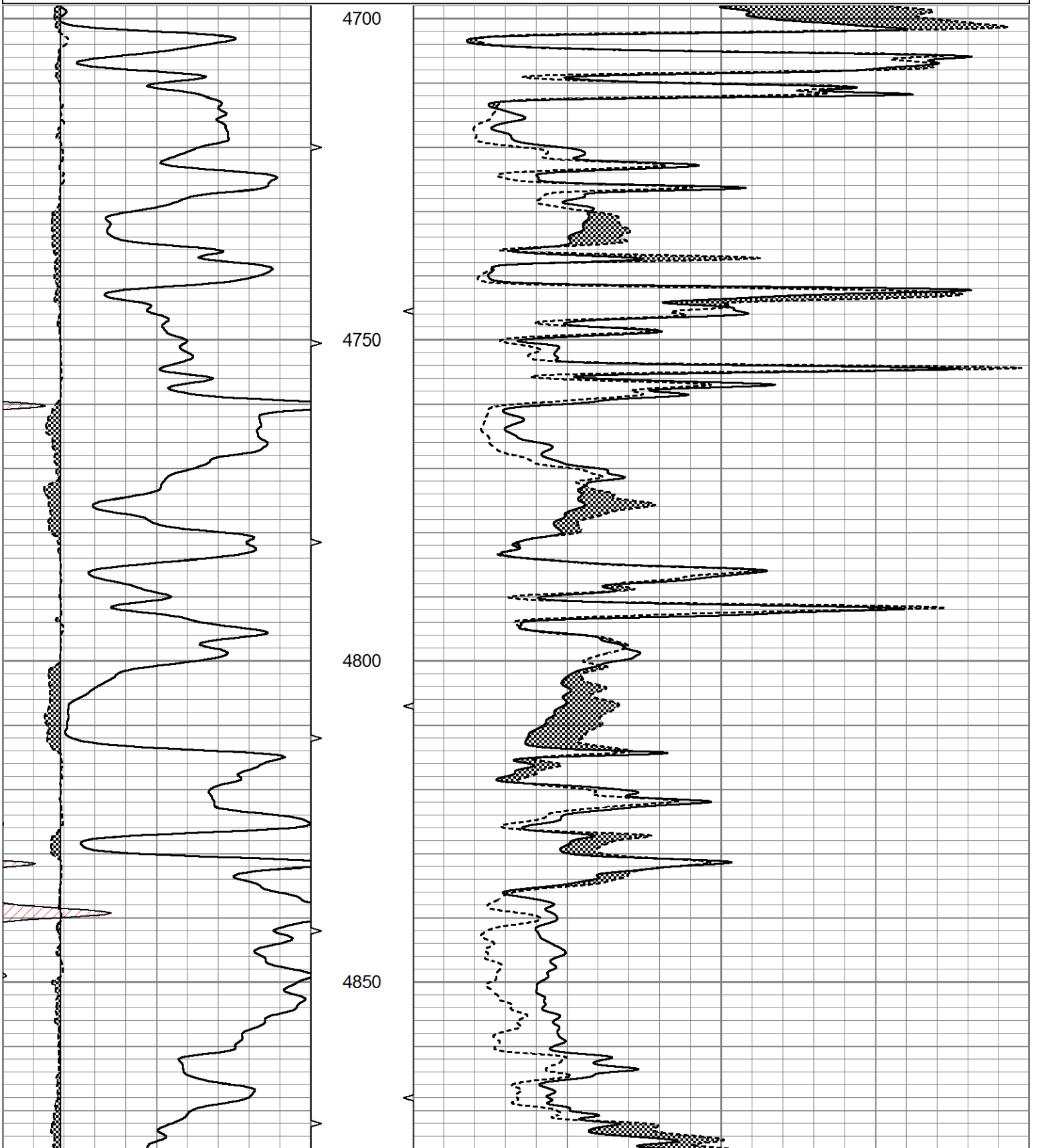


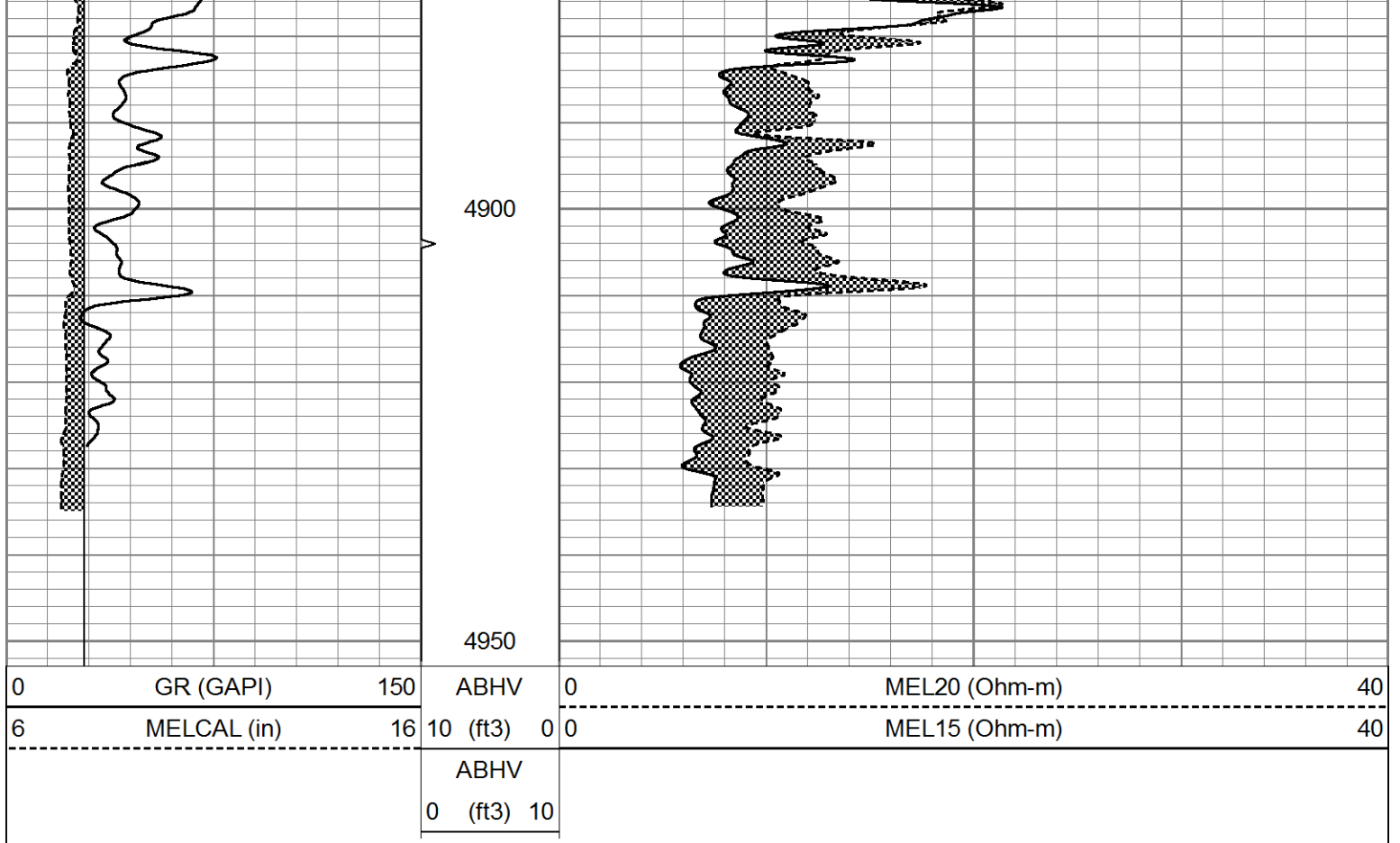


REPEAT SECTION

Database File 5840ddn.db
 Dataset Pathname pass5.1
 Presentation Format micro
 Dataset Creation Sat Dec 04 22:05:44 2021
 Charted by Depth in Feet scaled 1:240

0	GR (GAPI)	150	ABHV	0	MEL20 (Ohm-m)	40
6	MELCAL (in)	16	10 (ft3)	0 0	MEL15 (Ohm-m)	40
			ABHV			
			0 (ft3)	10		





Calibration Report

Database File 5840ddn.db
 Dataset Pathname pass6.2
 Dataset Creation Sat Dec 04 23:03:29 2021

MICRO Calibration Report

Serial Number:	070912	
Tool Model:	ProbeN	
Performed:	Wed Dec 01 03:00:18 2021	
Caliper Calibration:	Gain=3.478	Offset=0.696
References	Low Cal 8.000	High Cal 16.000
Readings	2.100	4.400
1.5" Calibration:	Gain=32.000	Offset=-1.000
References	Low Cal 0.000	High Cal 20.000
Readings	0.002	1.239
2" Calibration:	Gain=42.000	Offset=0.800
References	Low Cal 0.000	High Cal 20.000
Readings	0.003	1.075

Gamma Ray Calibration Report

Serial Number:	070559	
Tool Model:	OPEN_GR	
Performed:	Sun Oct 24 12:56:47 2021	
Calibrator Value:	1.0	GAPI

Background Reading:	0.0	cps
Calibrator Reading:	1.0	cps
Sensitivity:	0.2800	GAPI/cps