



MIDWEST SURVEYS
 LOGGING - PERFORATING - CONSULTING SERVICES
 P.O. Box 68, Osawatomie, KS 68064
 913 / 755 - 2128

GAMMA RAY / NEUTRON / CCL

File No. _____

Company **Colt Energy, Inc.**

Well **Fitzpatrick No.- 10**

Field **Iola**

County **Allen** State **Kansas**

Location **1508' FSL & 1155' FWL**

SE-SE-NW-SW

Other Services **Perforate**

Sec. 9
 Permament Datum **GL** Elevation **1018'**
 Log Measured From **GL** K.E. NA
 Drilling Measured From **GL** D.L. NA
 G.L. 1018'

Date **10-15-2021**

Run Number **One**

Depth Logger **1130.0**

Bottom Logged Interval **1048.0**

Top Log Interval **20.0**

Fluid Level **Full**

Type Fluid **Water**

Density / Viscosity **NA**

Salinity - PPM Cl **NA**

Max Recorded Temp **NA**

Estimated Cement Top **NA**

Equipment No. **102** Location **Osawatimie**

Recorded By **Steve Windisch**

Witnessed By **Wes Moors**

BORE-HOLE RECORD				CASING RECORD			
Run	BIT	FROM	TO	SIZE	WT	FROM	TO
One	12.25"	0.0	20.0	8.625"	24.0 #	0.0	20.0
Two	6.75"	20.0	1130.0	4.50"	10.5 #	0.0	1057.44
					Set	At	1053.44

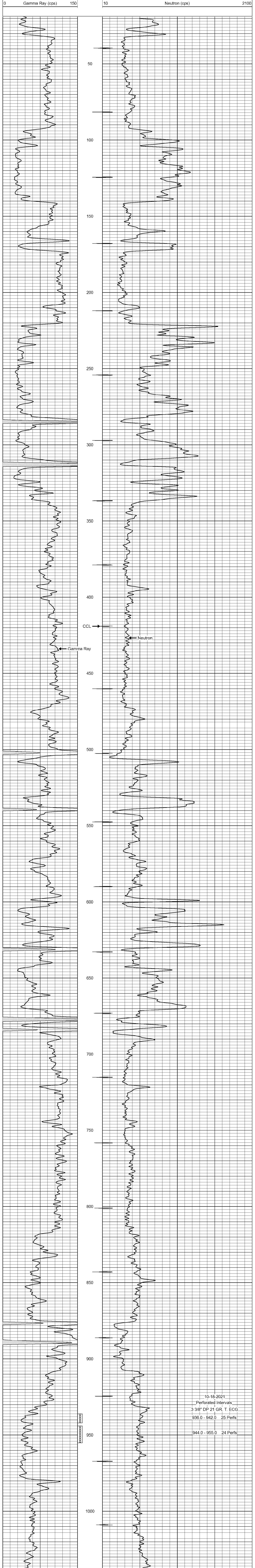
<<< Fold Here >>>

All interpretations are opinions based on inferences from electrical or other measurements and we cannot and do not guarantee the accuracy or correctness of any interpretation, and we shall not, except in the case of gross or willful negligence on our part, be liable or responsible for any loss, costs, damages, or expenses incurred or sustained by anyone resulting from any interpretation made by any of our officers, agents or employees. These interpretations are also subject to our general terms and conditions set out in our current Price Schedule.

Comments

Drilling Contractor :
Colt Energy, Inc.

Database File: fitzpatrick 10.db
 Dataset Pathname: pass1
 Presentation Format: gr-n-ccl
 Dataset Creation: Fri Oct 15 09:26:55 2021 by Log SCH 111116
 Charted by: Depth in Feet scaled 1:240



10-18-2021
 Perforated Intervals
 3 3/8" DP 21 GR, T, ECG
 936.0 - 942.0 25 Perfs
 944.0 - 955.0 24 Perfs