



**CEMENT  
BOND  
LOG**

Company John O Farmer Inc.  
Well Sutor-Zeigler #10  
Field Overlook  
County Sheridain  
State KS

Company John O Farmer Inc.  
Well Sutor-Zeigler #10  
Field Overlook  
County Sheridain  
State KS

Location: 2470 FNL' & 2710' FEL  
API #: 15-179-21474

Permanent Datum	SEC 30 TWP 8S RGE 26W	Ground Level	Elevation	2569'	Other Services  PERF  Elevation K.B. 2577' D.F. 2576' G.L. 2569'
Log Measured From	K.B. 8' AGL				
Drilling Measured From	K.B.				

Date 9/07/21

Run Number One  
Depth Driller 4000'  
Depth Logger 3952'  
Bottom Logged Interval 3951'  
Top Log Interval Surface  
Open Hole Size 7 7/8"  
Type Fluid Water  
Density / Viscosity  
Max. Recorded Temp. // // //  
Estimated Cement Top 2650'  
Time Well Ready R.O.A  
Time Logger on Bottom 3:00 p.m  
Equipment Number T-118

Location Hays, KS  
Recorded By C. Patterson  
Witnessed By Mr. Duane Eichman

Borehole Record			Tubing Record				
Run Number	Bit	From	To	Size	Weight	From	To

Casing Record	Size	Wgt/Ft	Top	Bottom
Surface String	8 5/8"	23#	0'	222'
Prot. String				
Production String	5 1/2"	15.5#	0'	3995'
Liner				

<<< Fold Here >>>

All interpretations are opinions based on inferences from electrical or other measurements and we cannot and do not guarantee the accuracy or correctness of any interpretation, and we shall not, except in the case of gross or willful negligence on our part, be liable or responsible for any loss, costs, damages, or expenses incurred or sustained by anyone resulting from any interpretation made by any of our officers, agents or employees. These interpretations are also subject to our general terms and conditions set out in our current Price Schedule.

**Comments**

Hill City, KSU.S 24 W/West MAIN St. 23 mi West to RD10  
South on Rd 10 S 1.3 mi., to Rd 100E  
Then South on 100 E 1.5 mi, West Into Location

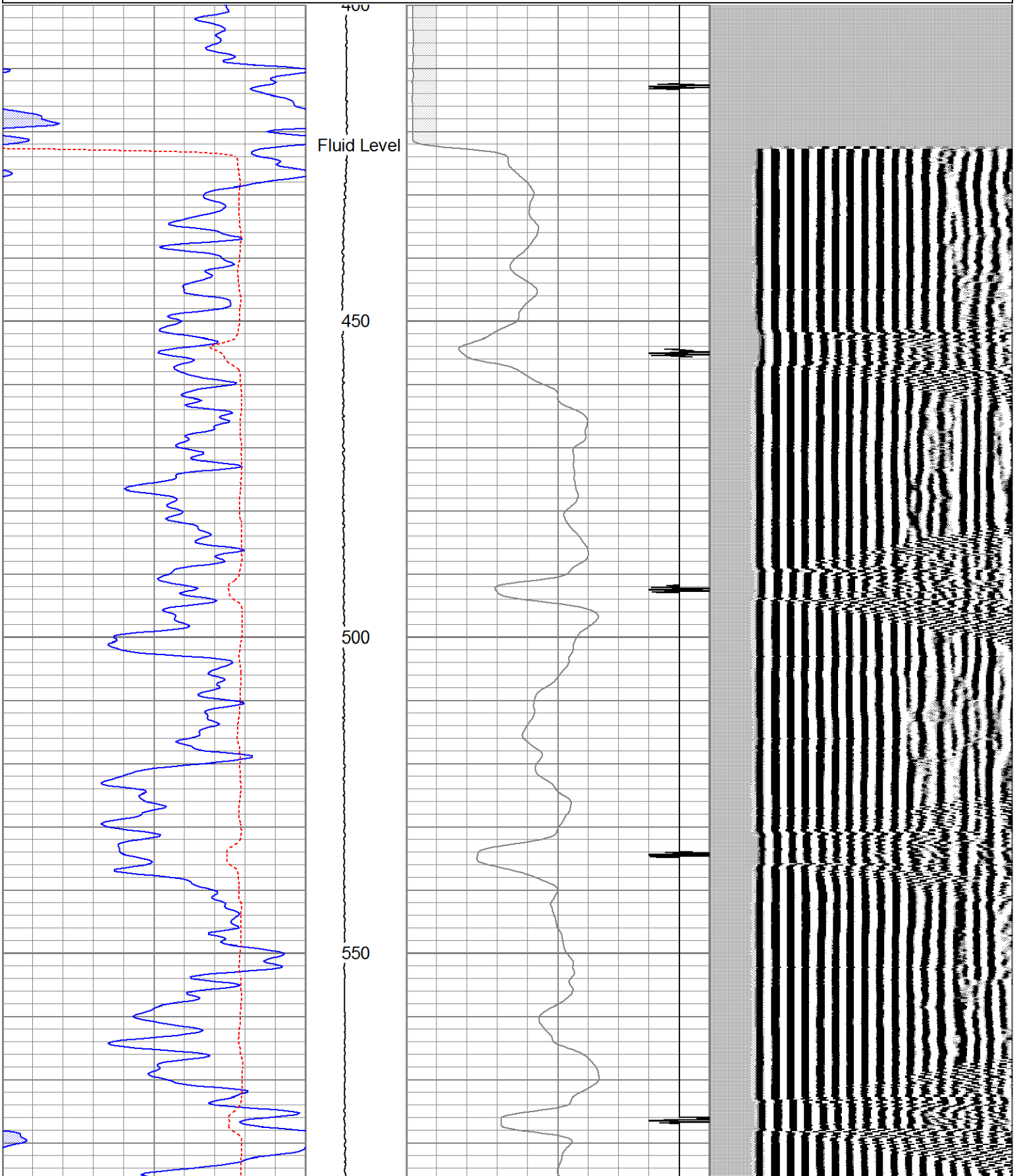
LAT/LONG  
39.328285,-100.2650529  
Thank You For Using Gemini Wireline  
785-625-1182

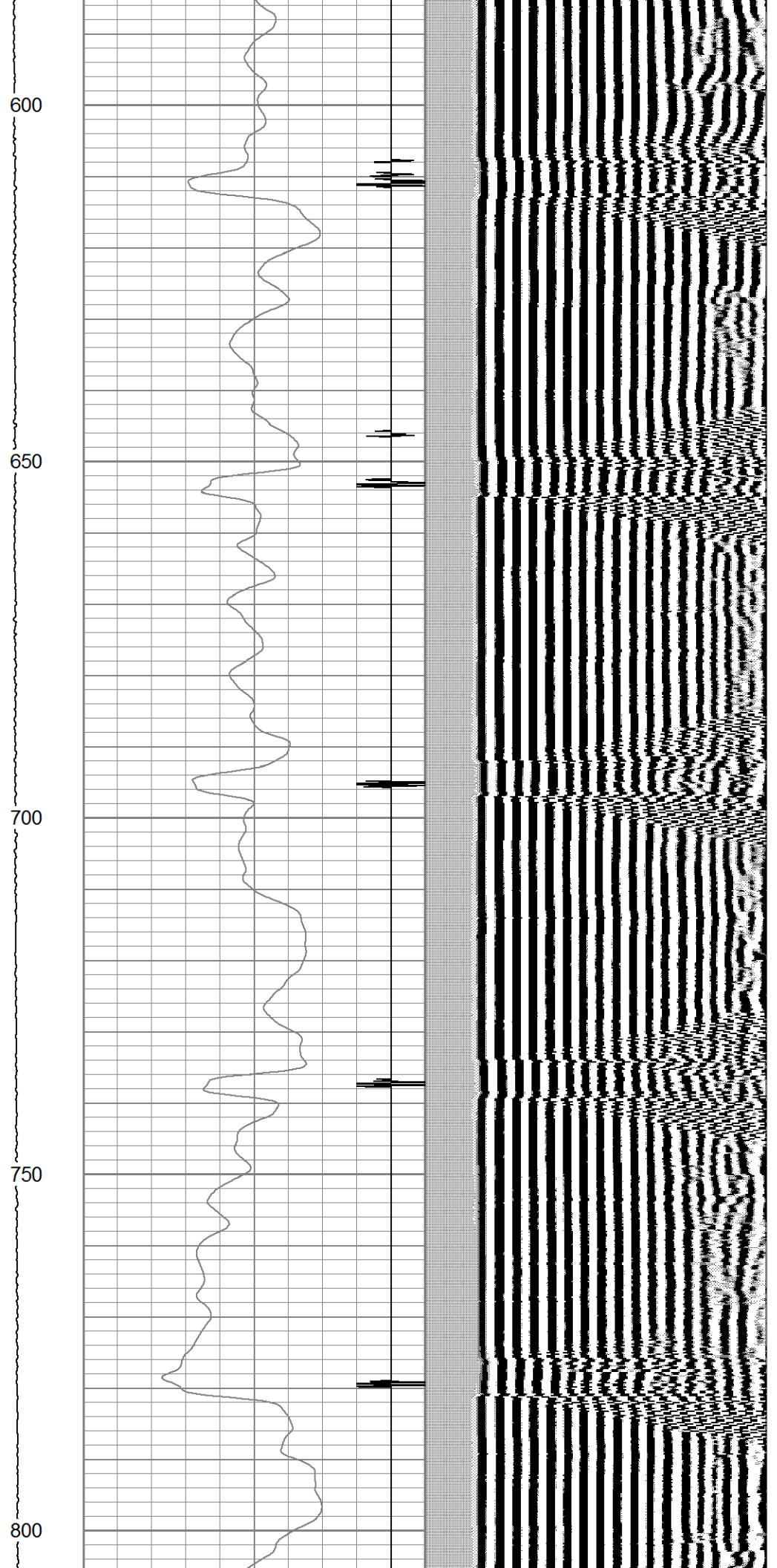
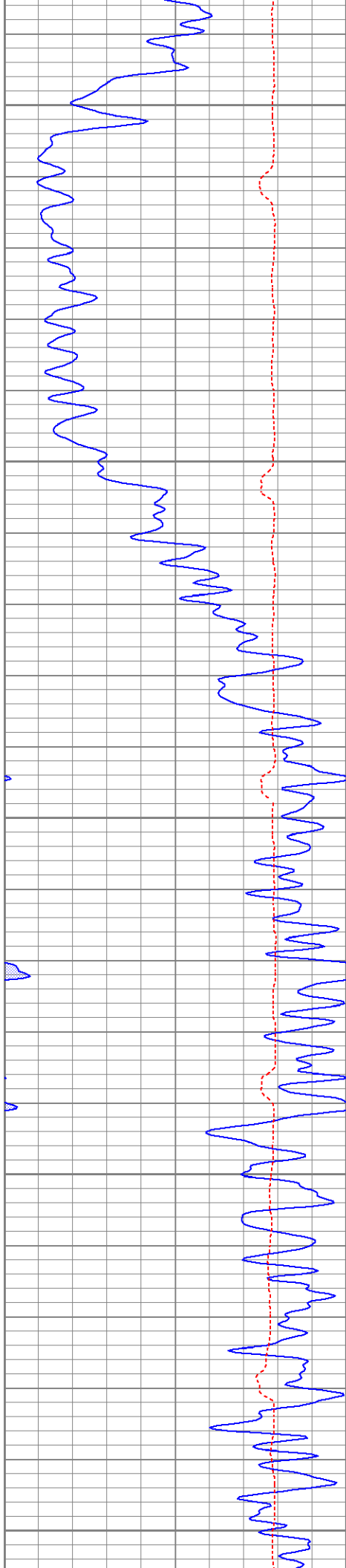


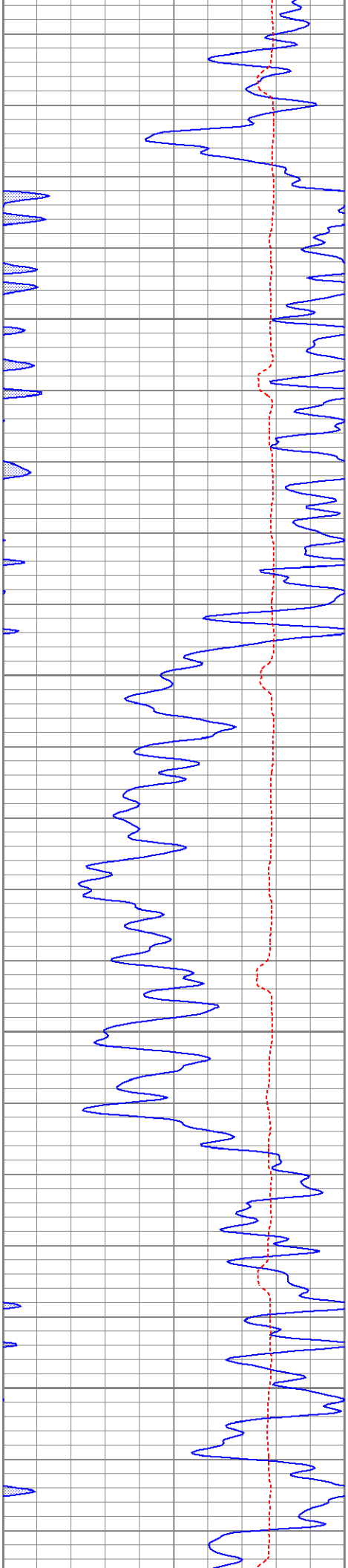
**MAIN PASS**

Database File jofsutor-ziegler#10cbl.db  
 Dataset Pathname pass2  
 Presentation Format cbl  
 Dataset Creation Tue Sep 07 15:12:46 2021  
 Charted by Depth in Feet scaled 1:240

0	GR (GAPI)	150	LTEN	18	CCL	-2	200	VDL (usec)	1200
150	GR (GAPI)	300	(lb)	0	AMP3FT (mV)	100			
400	TT3FT (usec)	200	-100 1100						





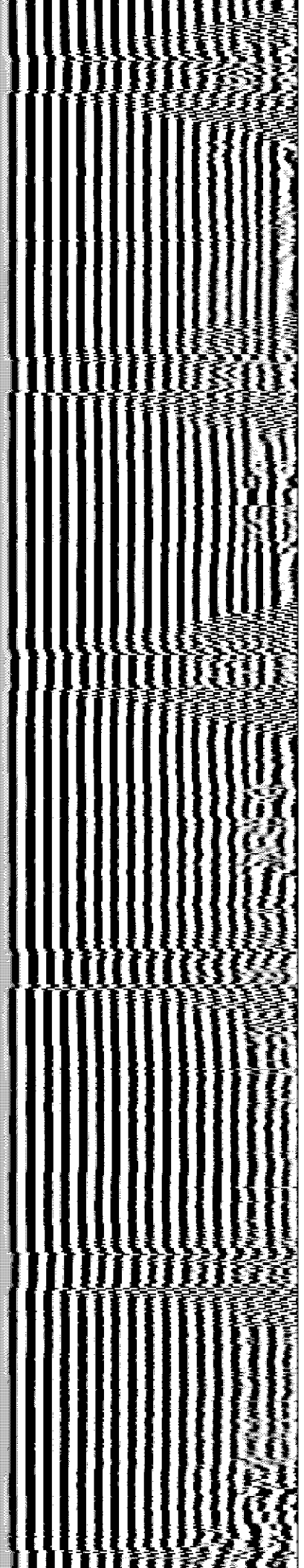
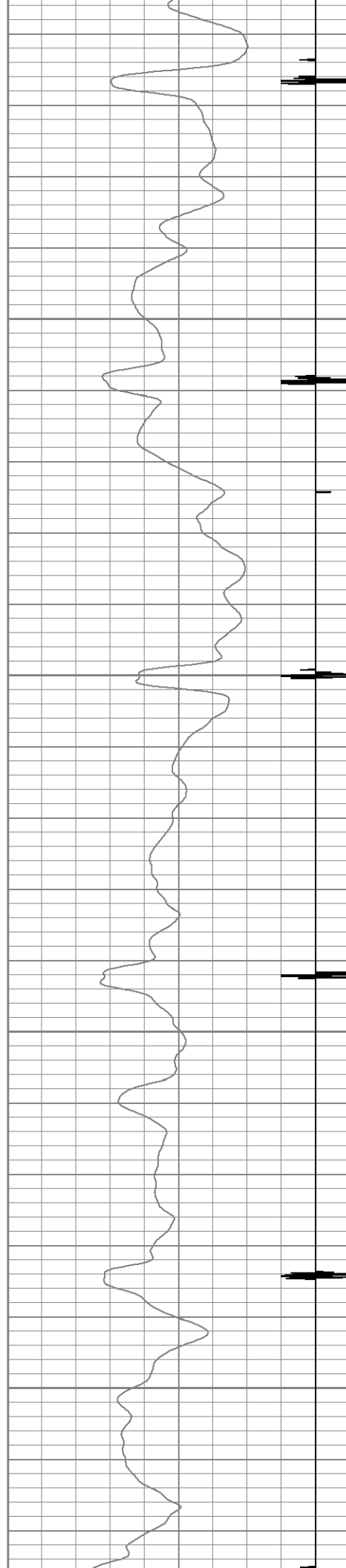


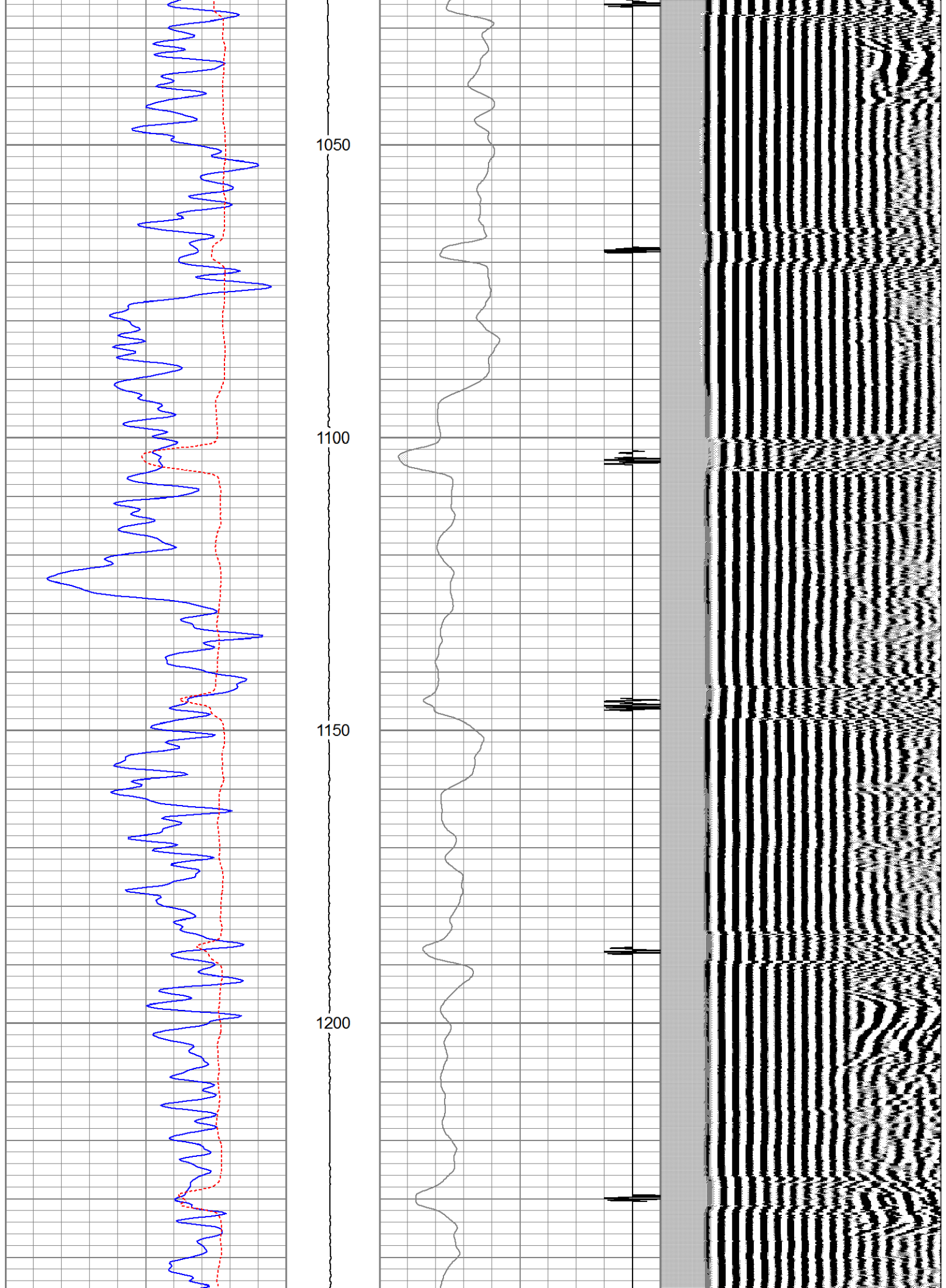
850

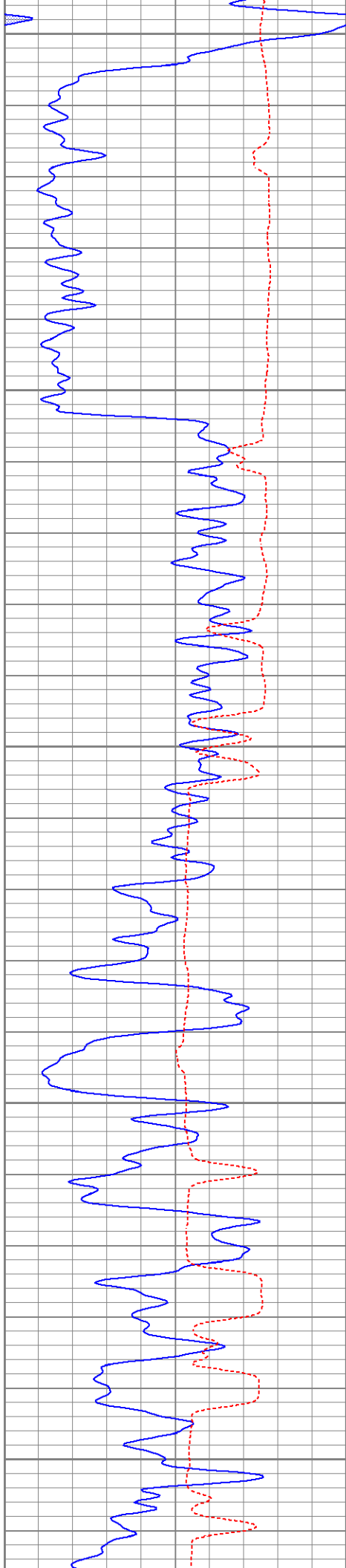
900

950

1000







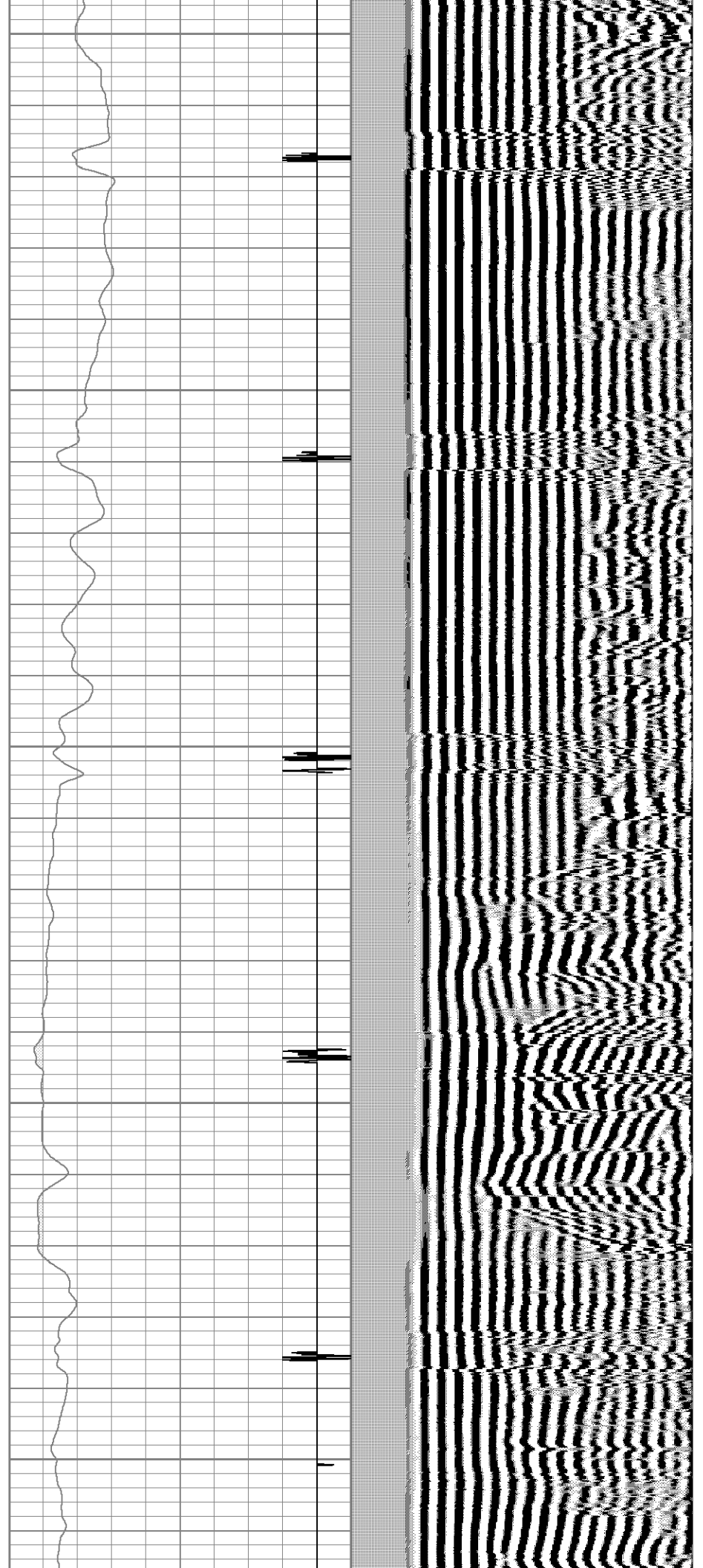
1250

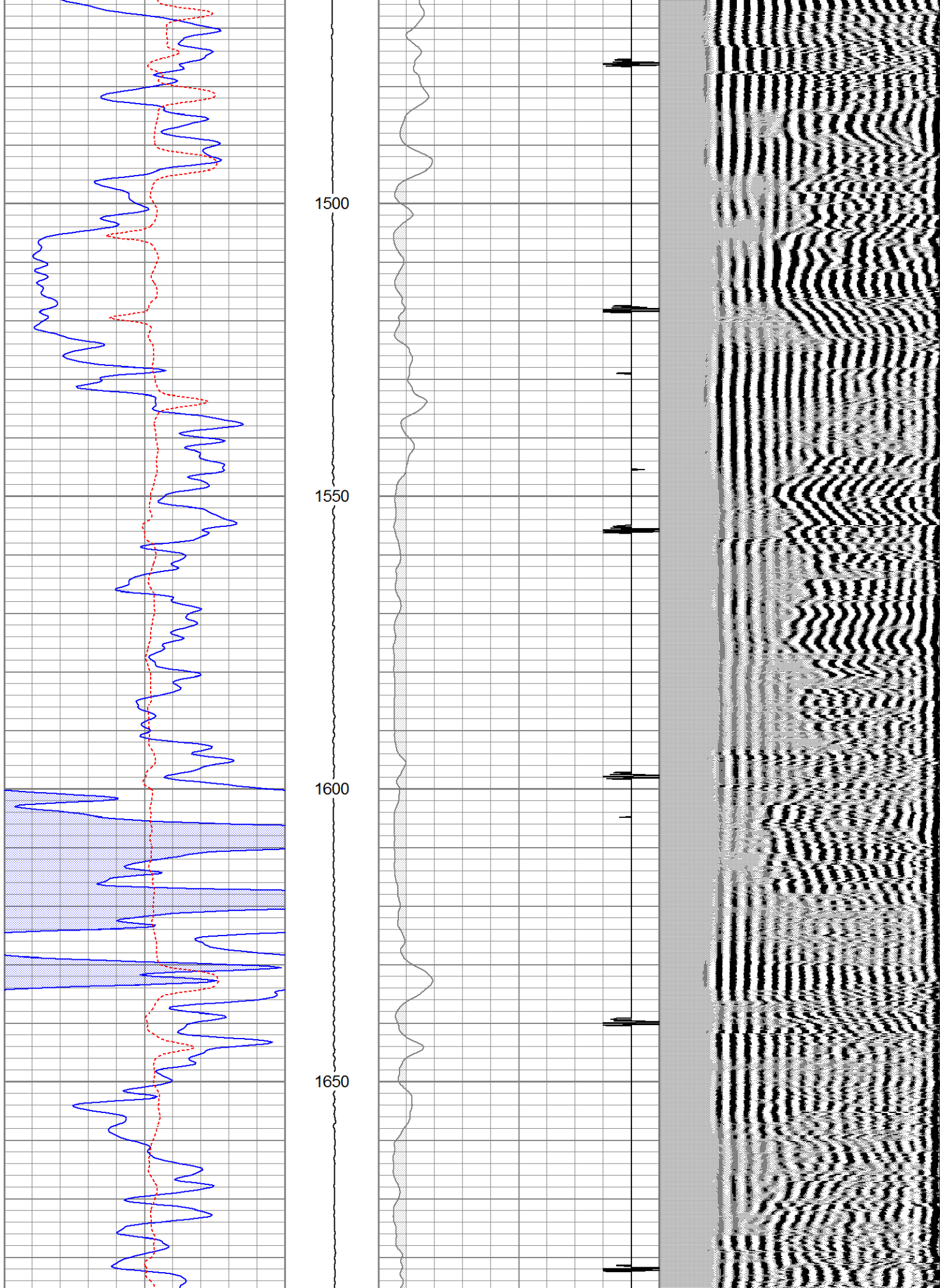
1300

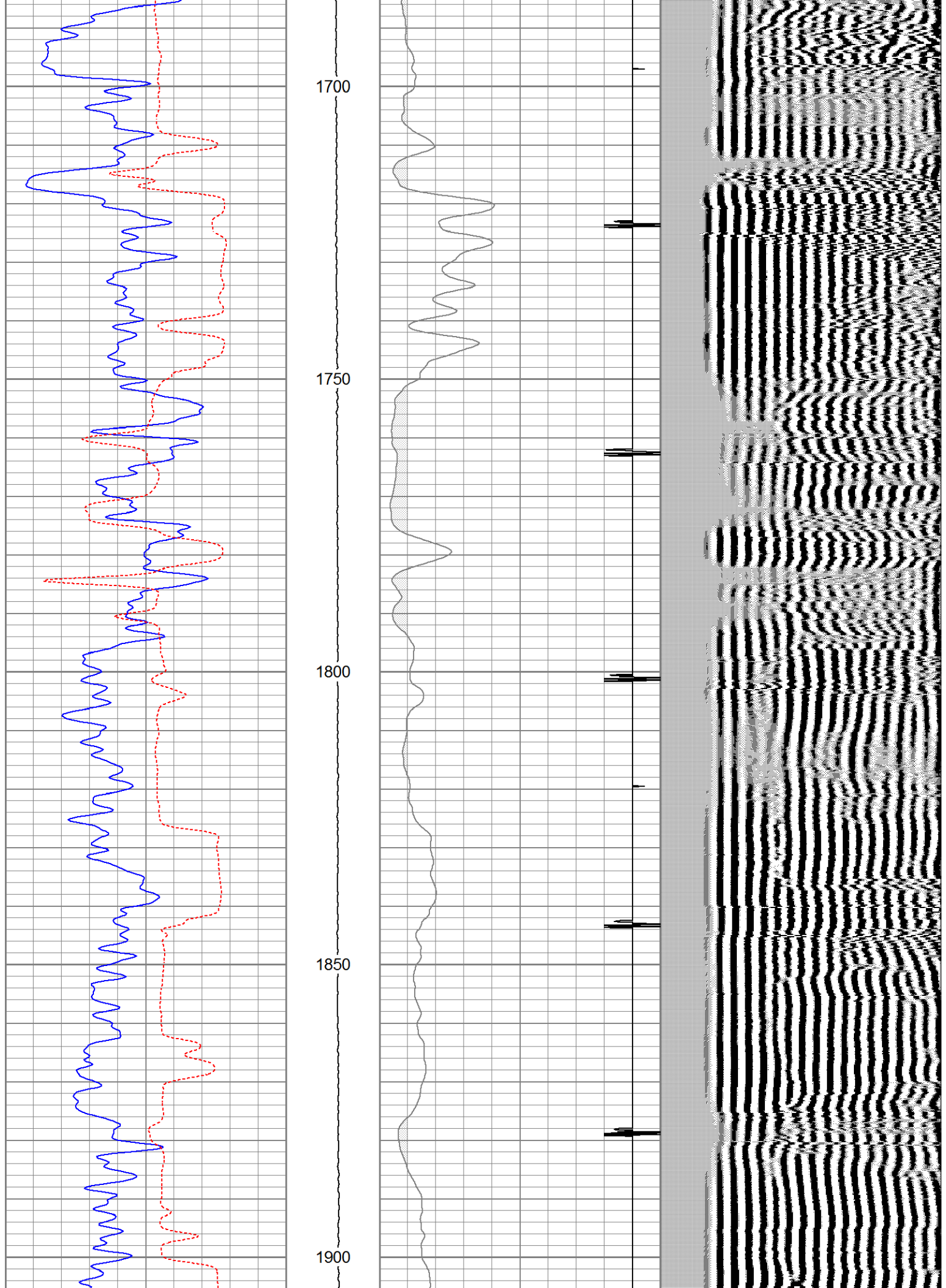
1350

1400

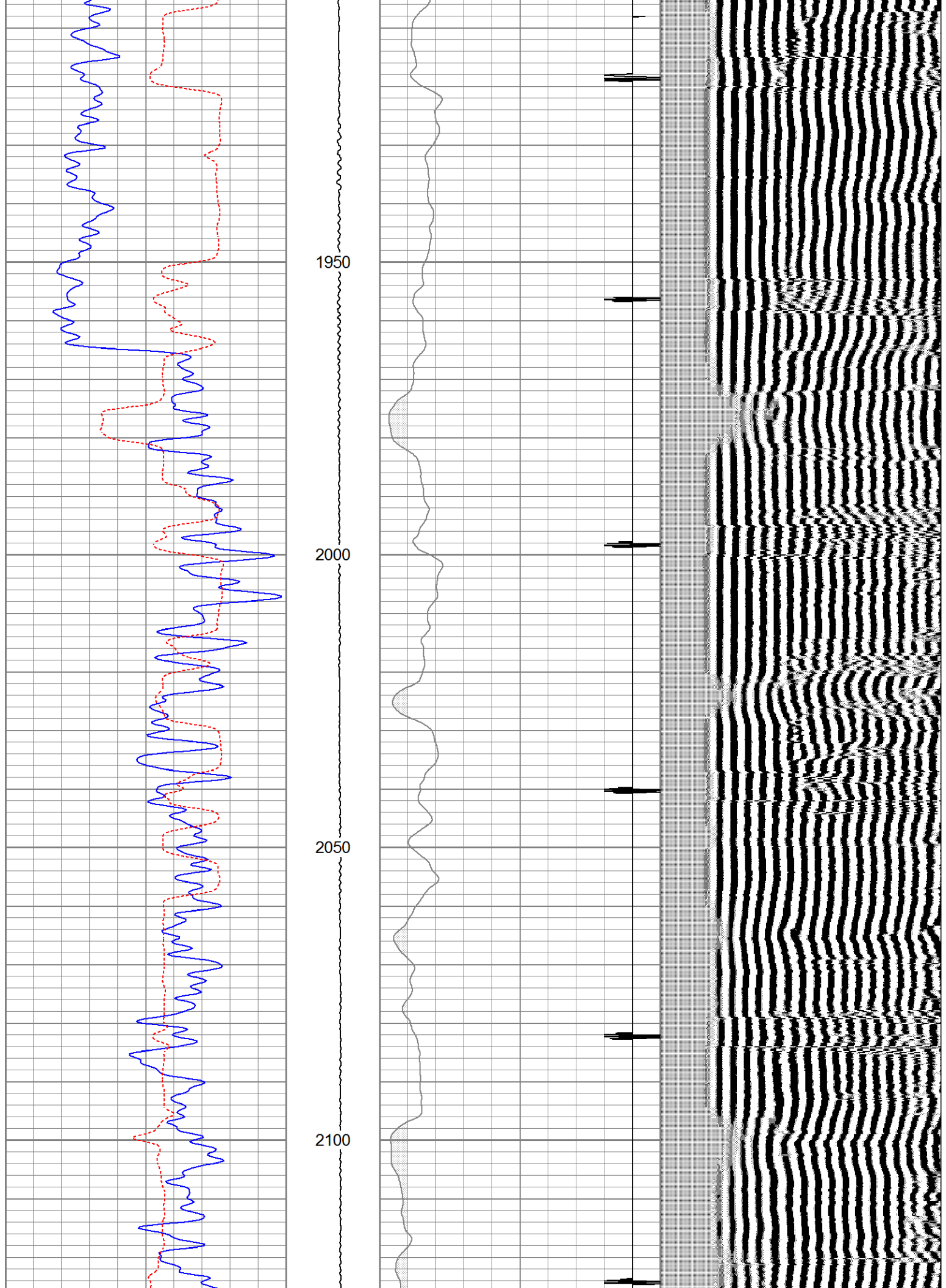
1450

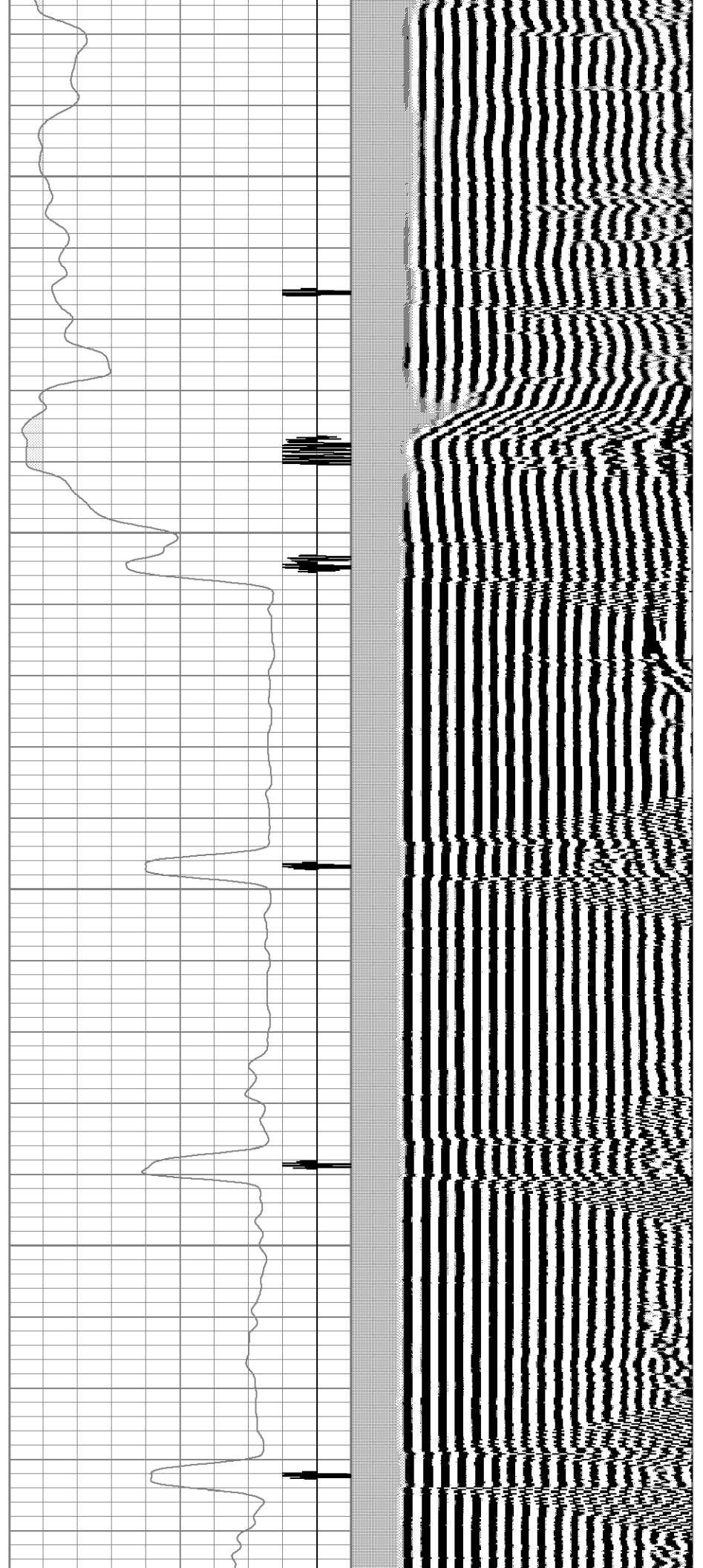
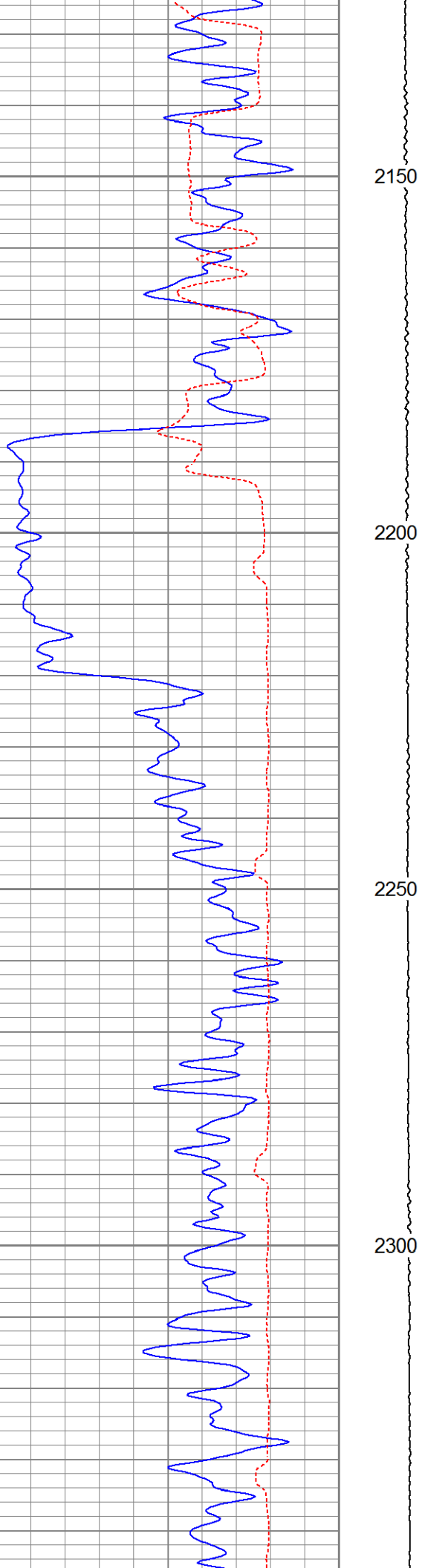


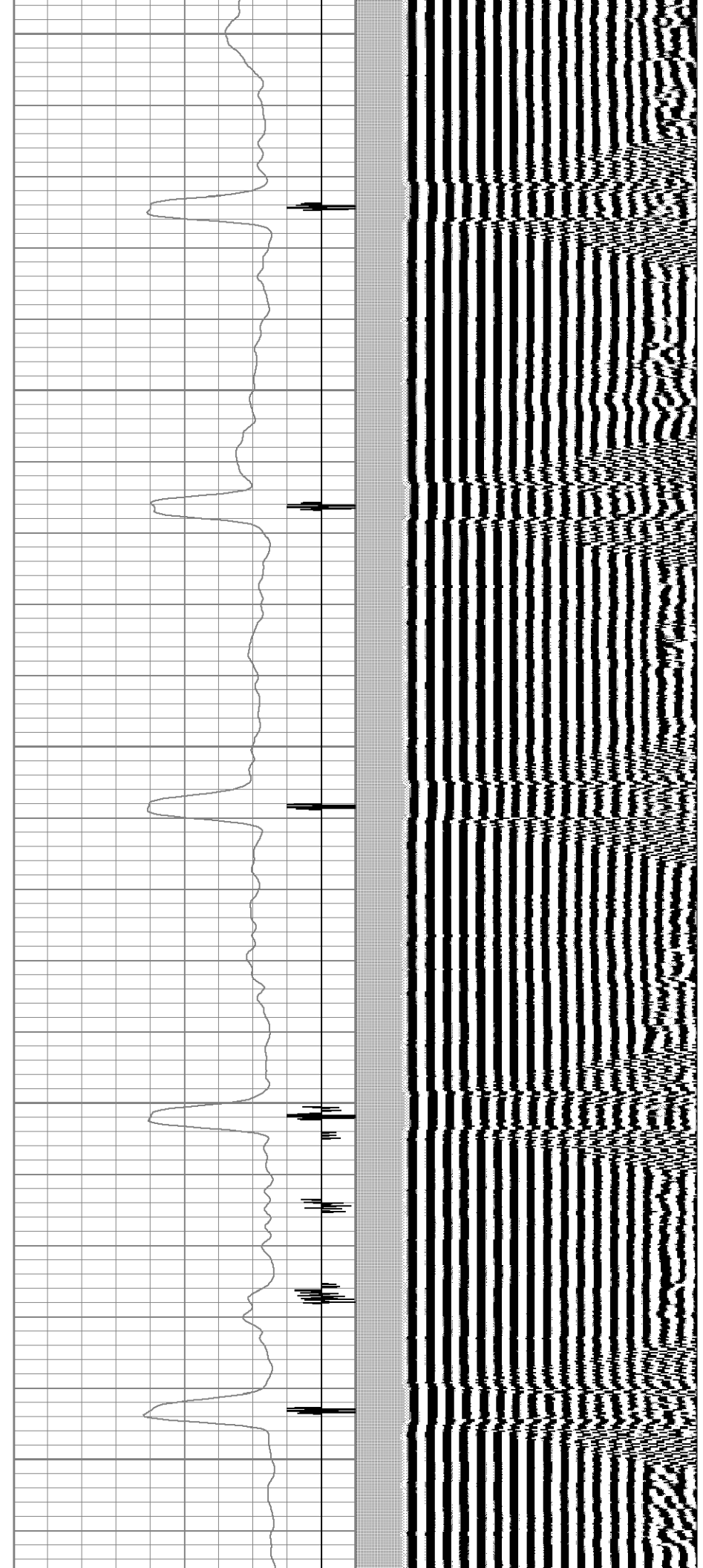
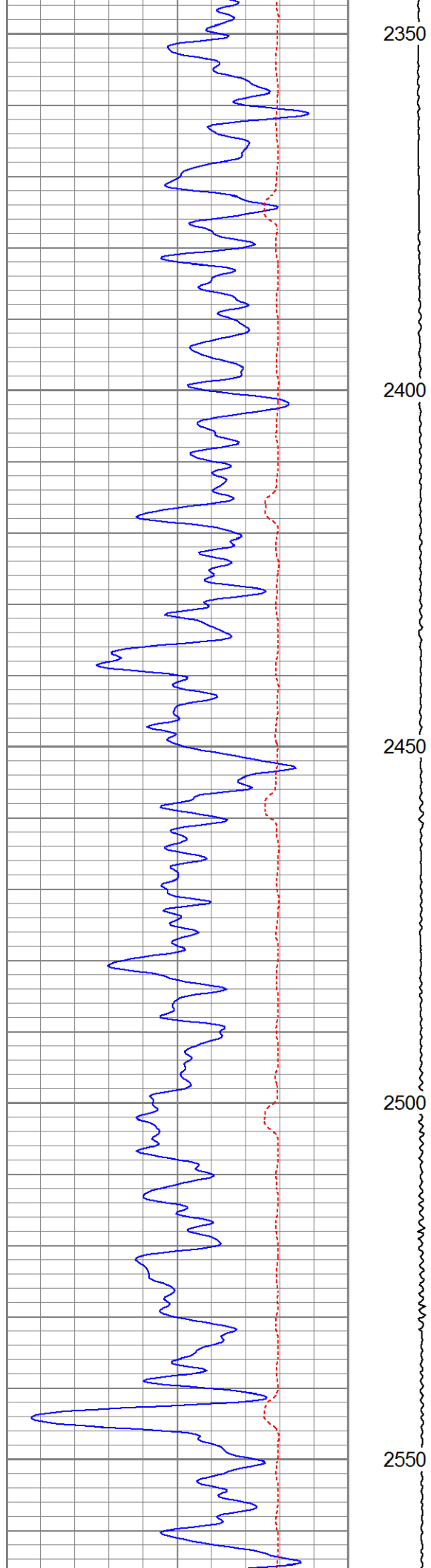


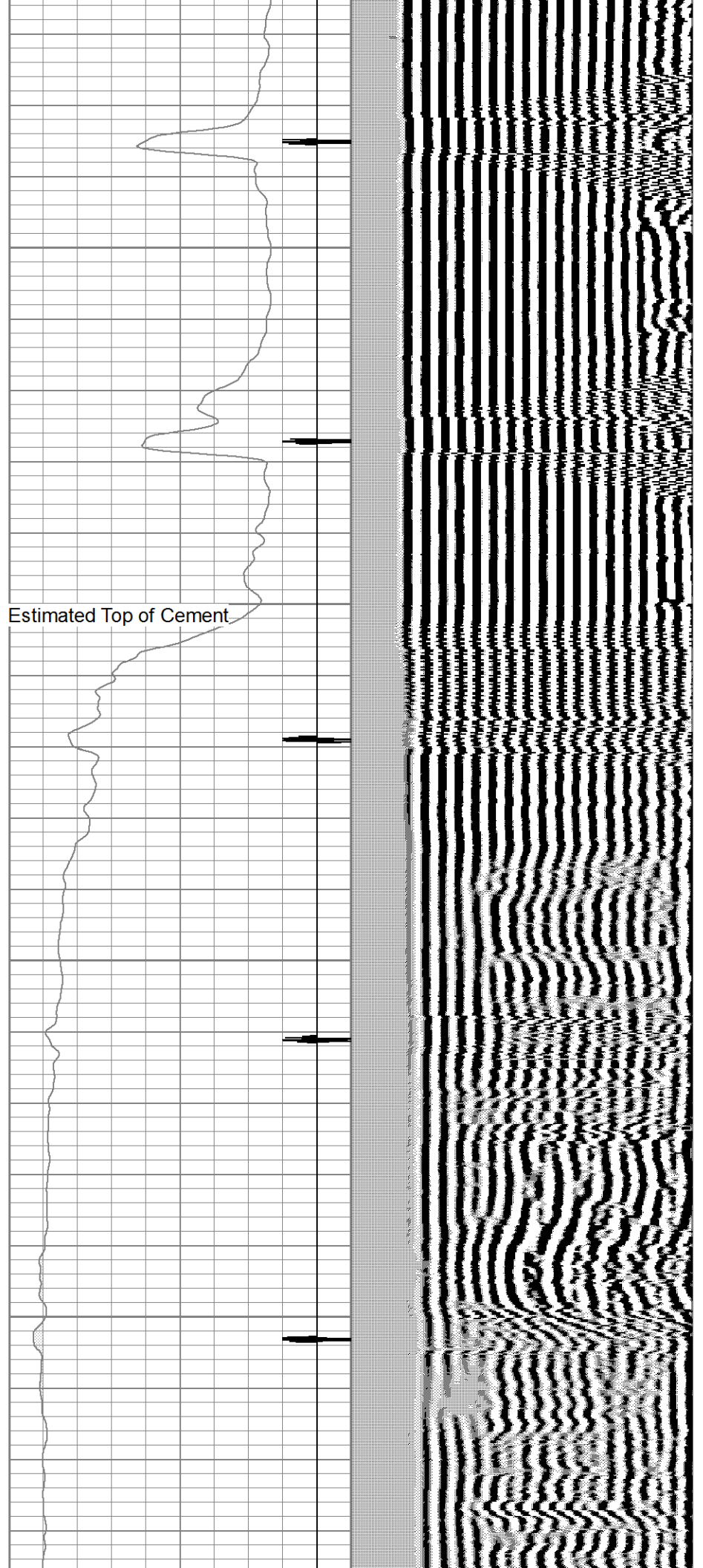
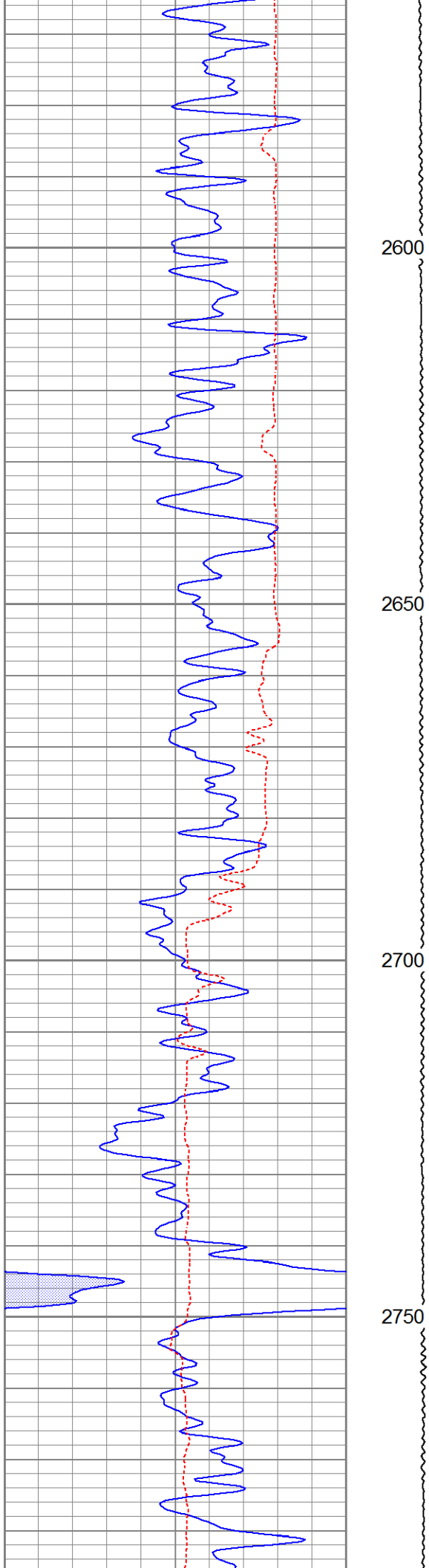


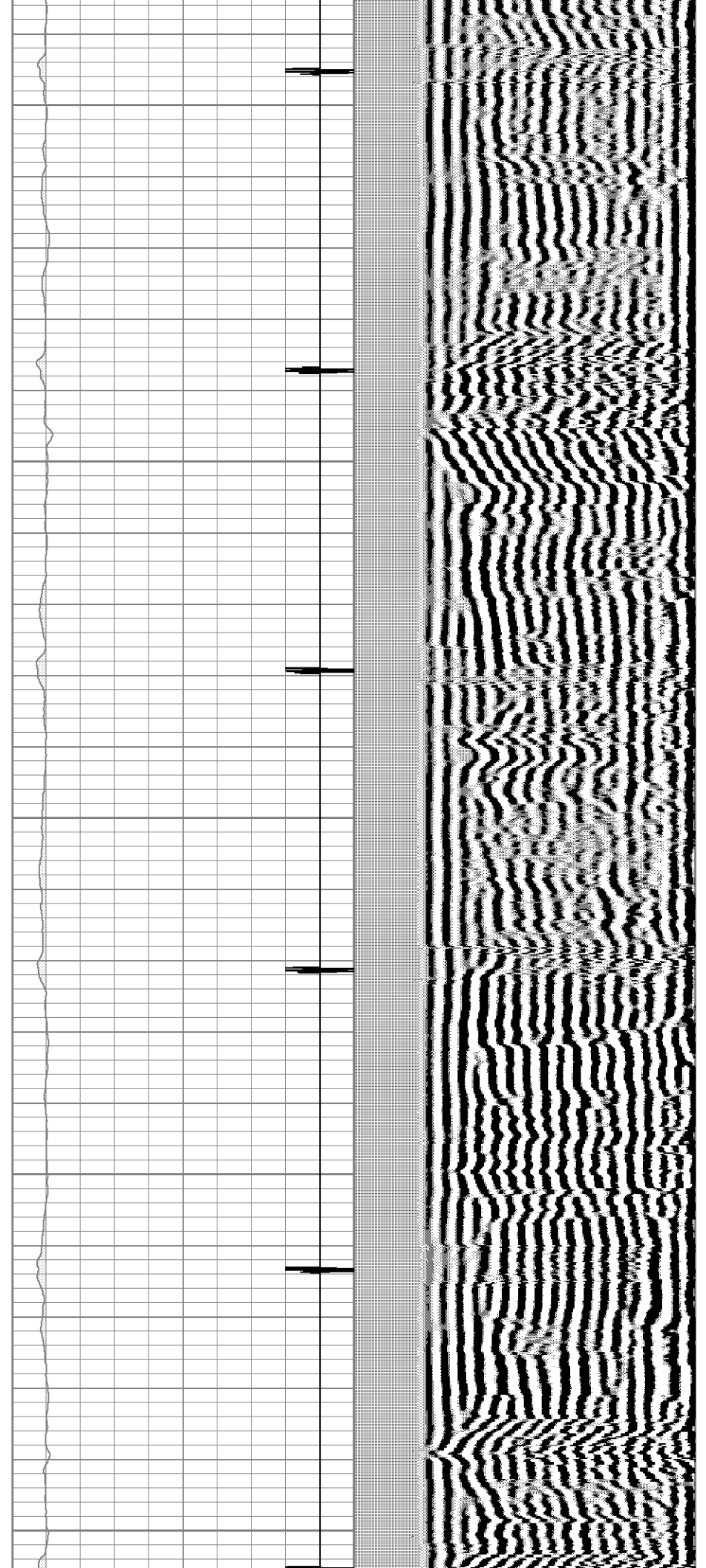
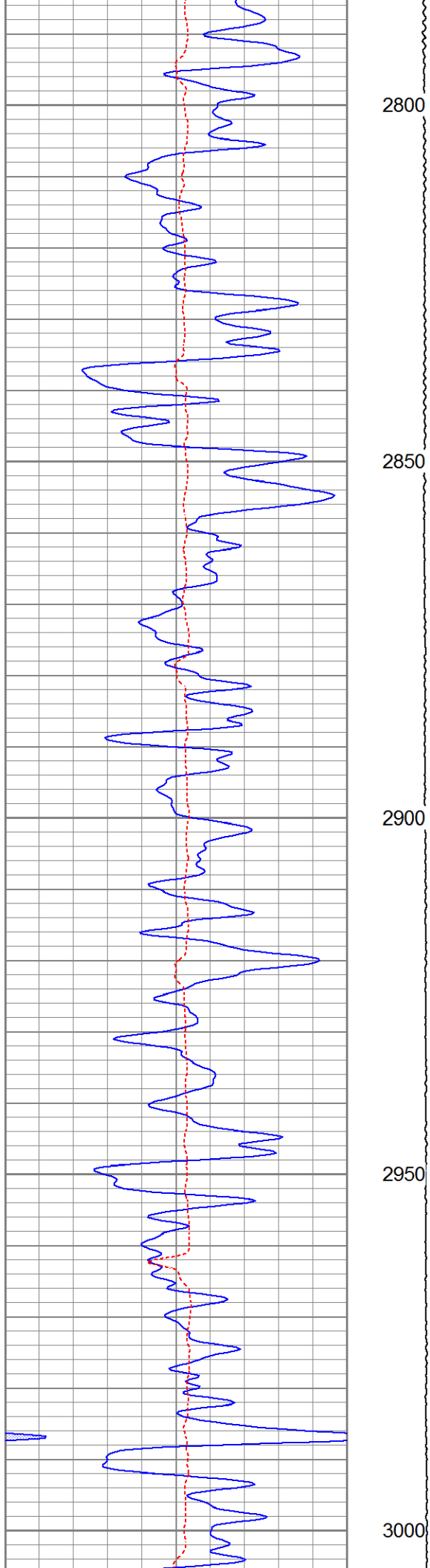


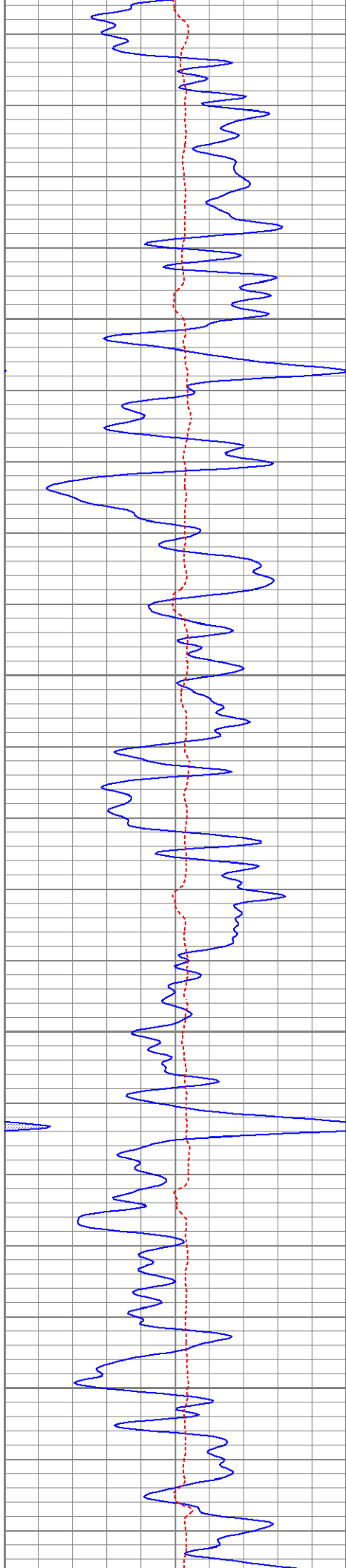










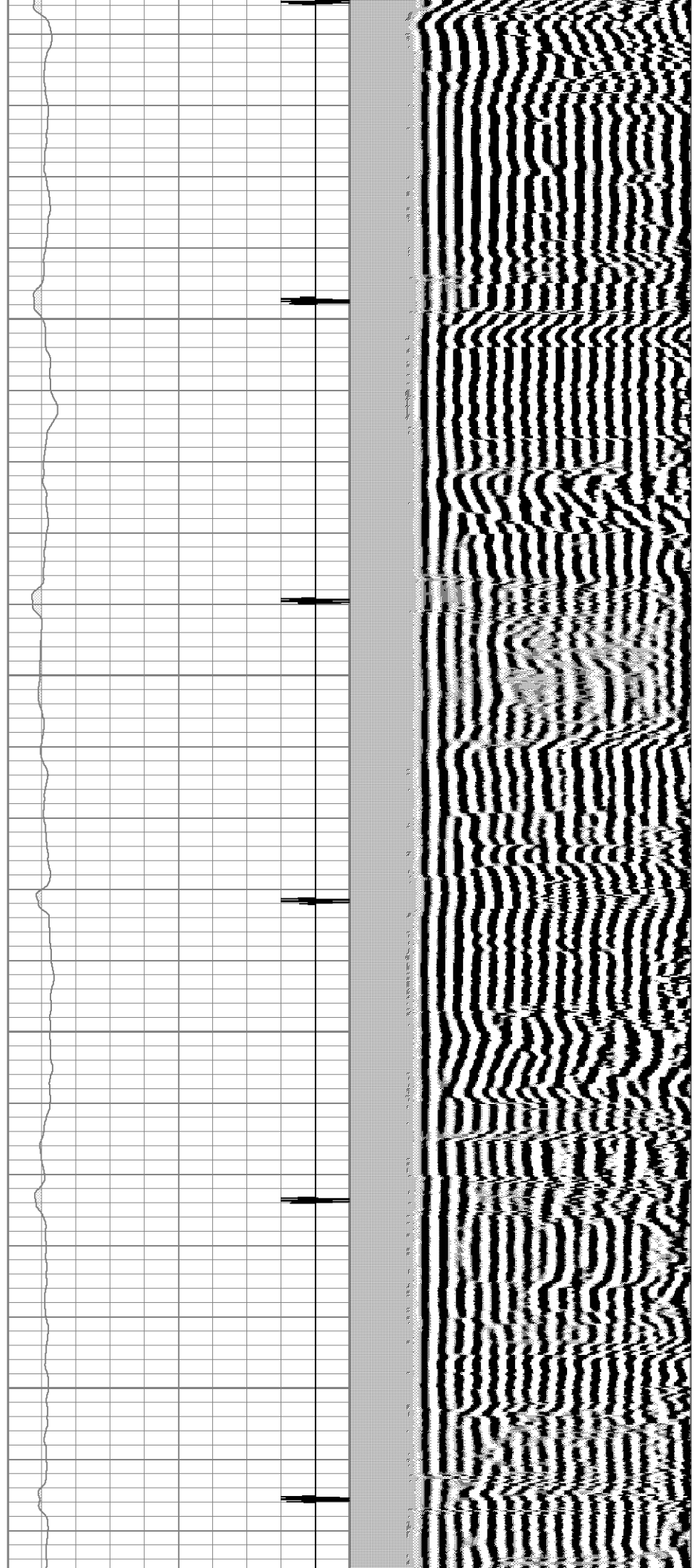


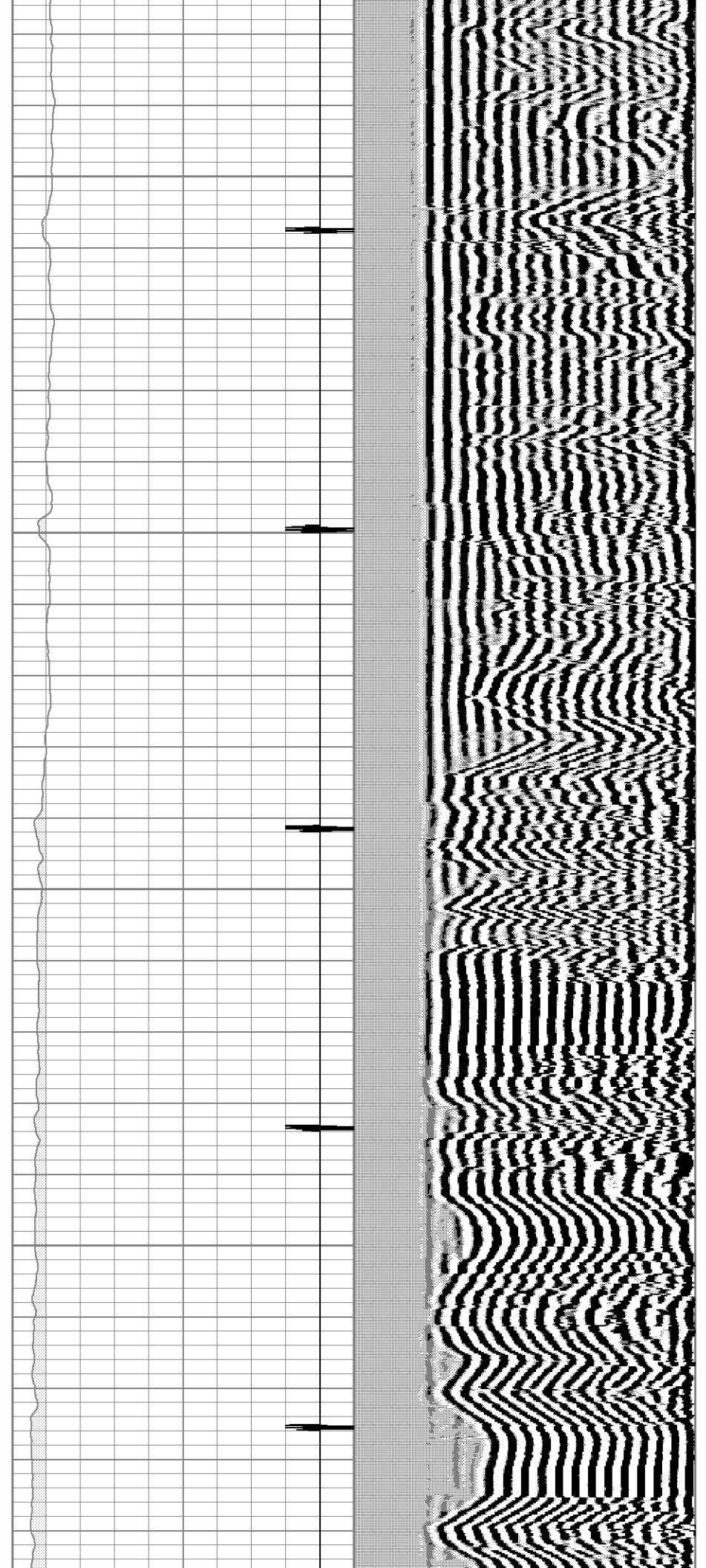
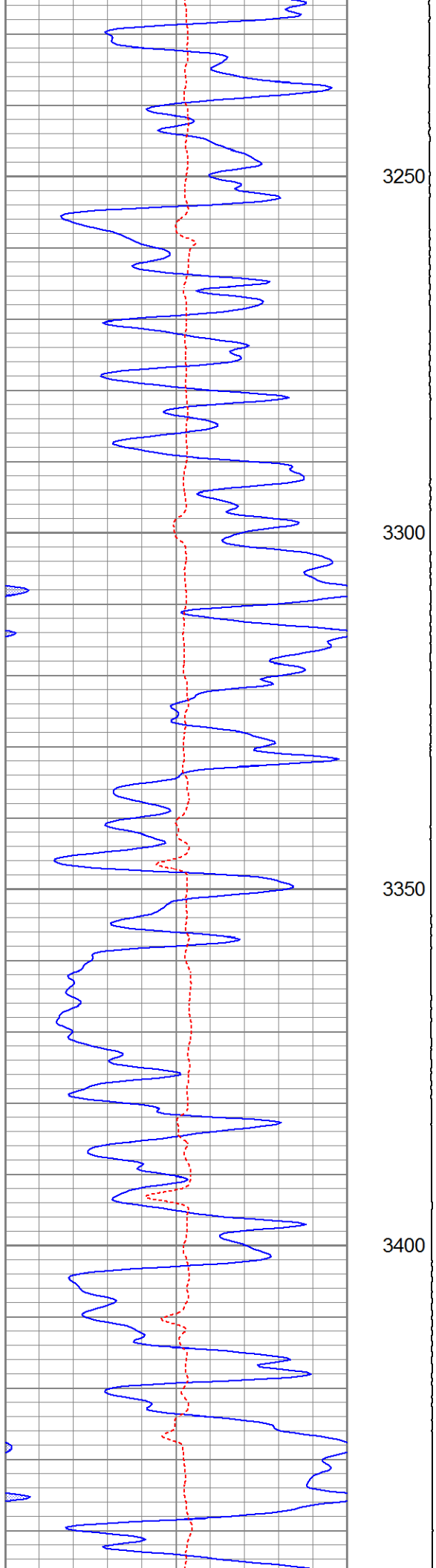
3050

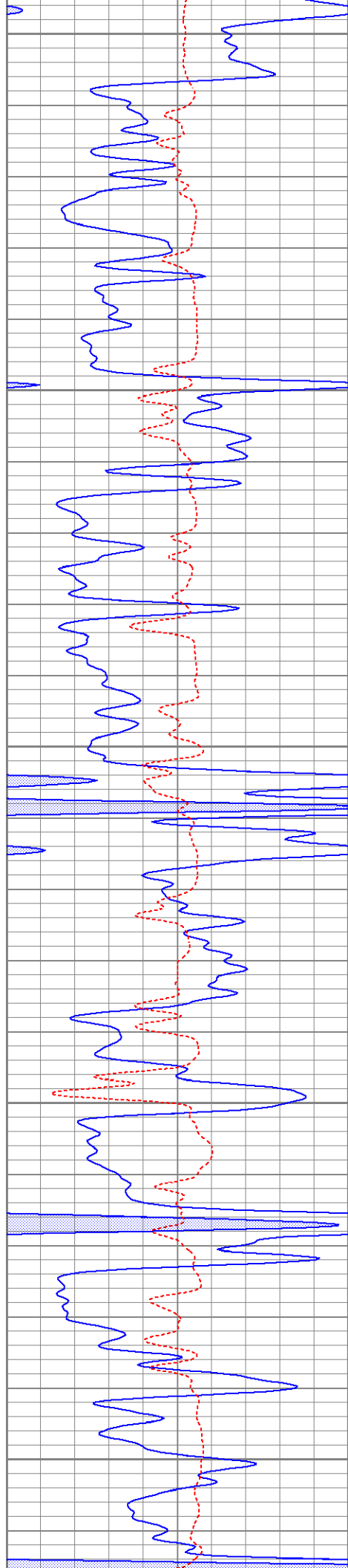
3100

3150

3200







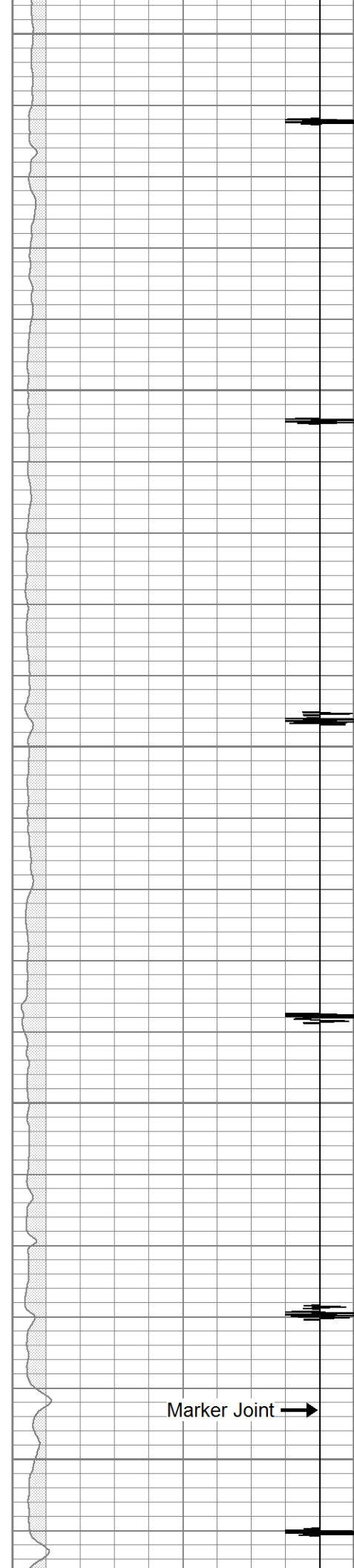
3450

3500

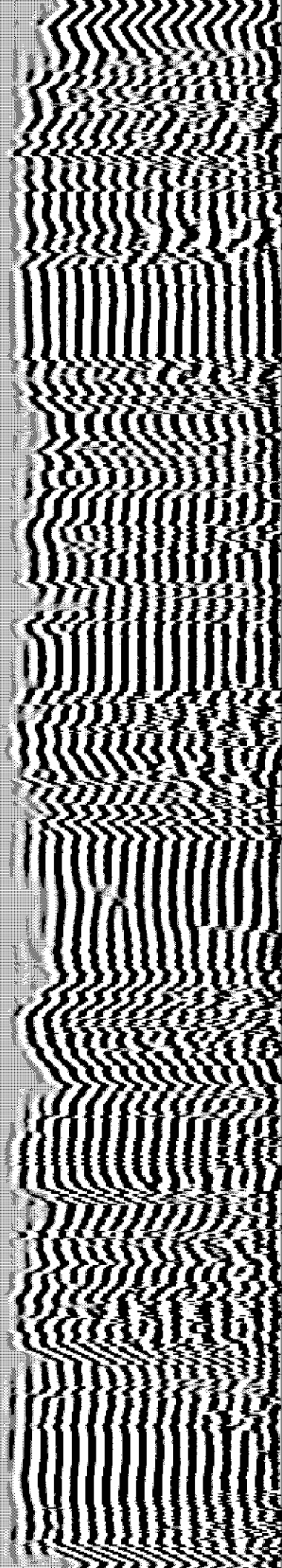
3550

3600

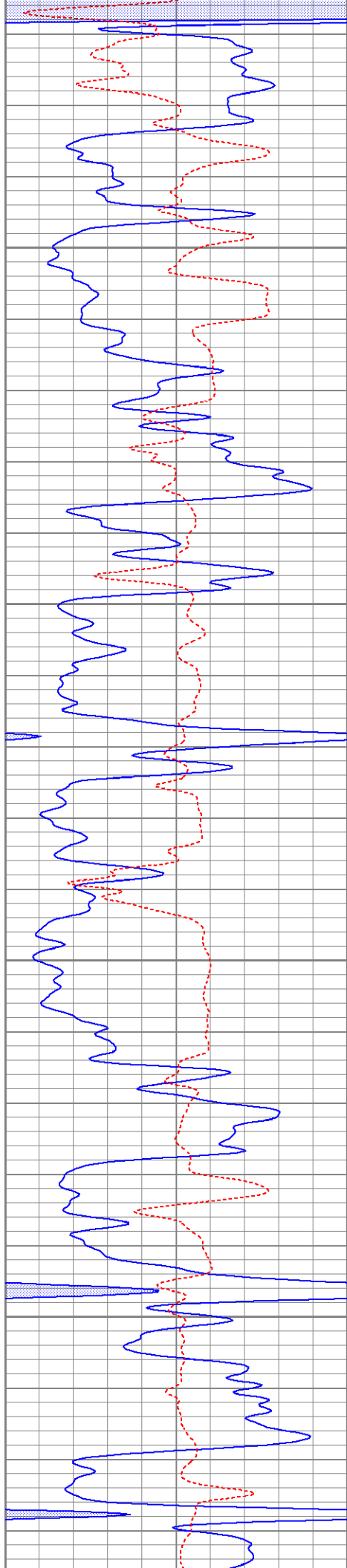
3650



Marker Joint →





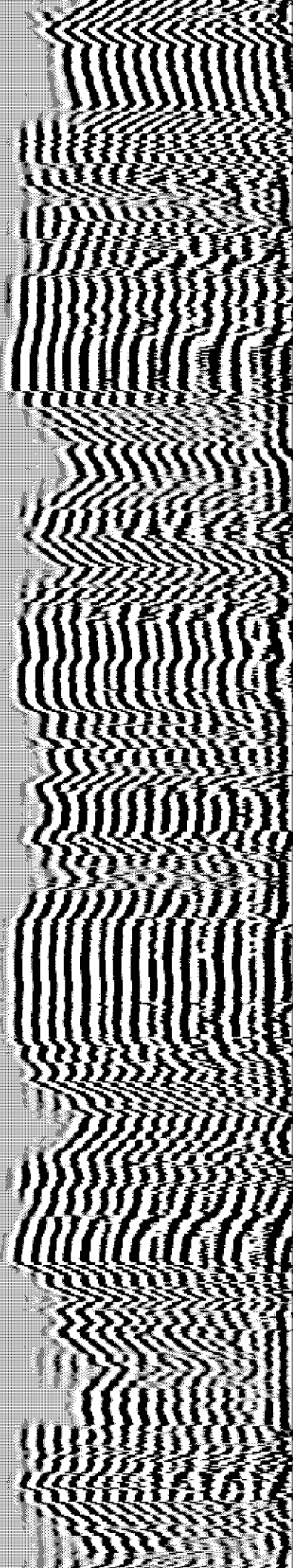
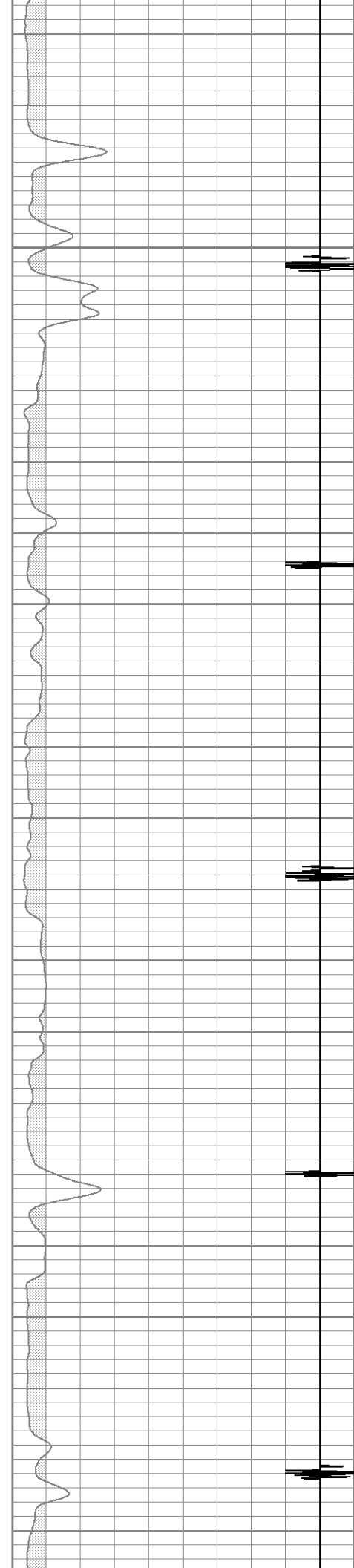


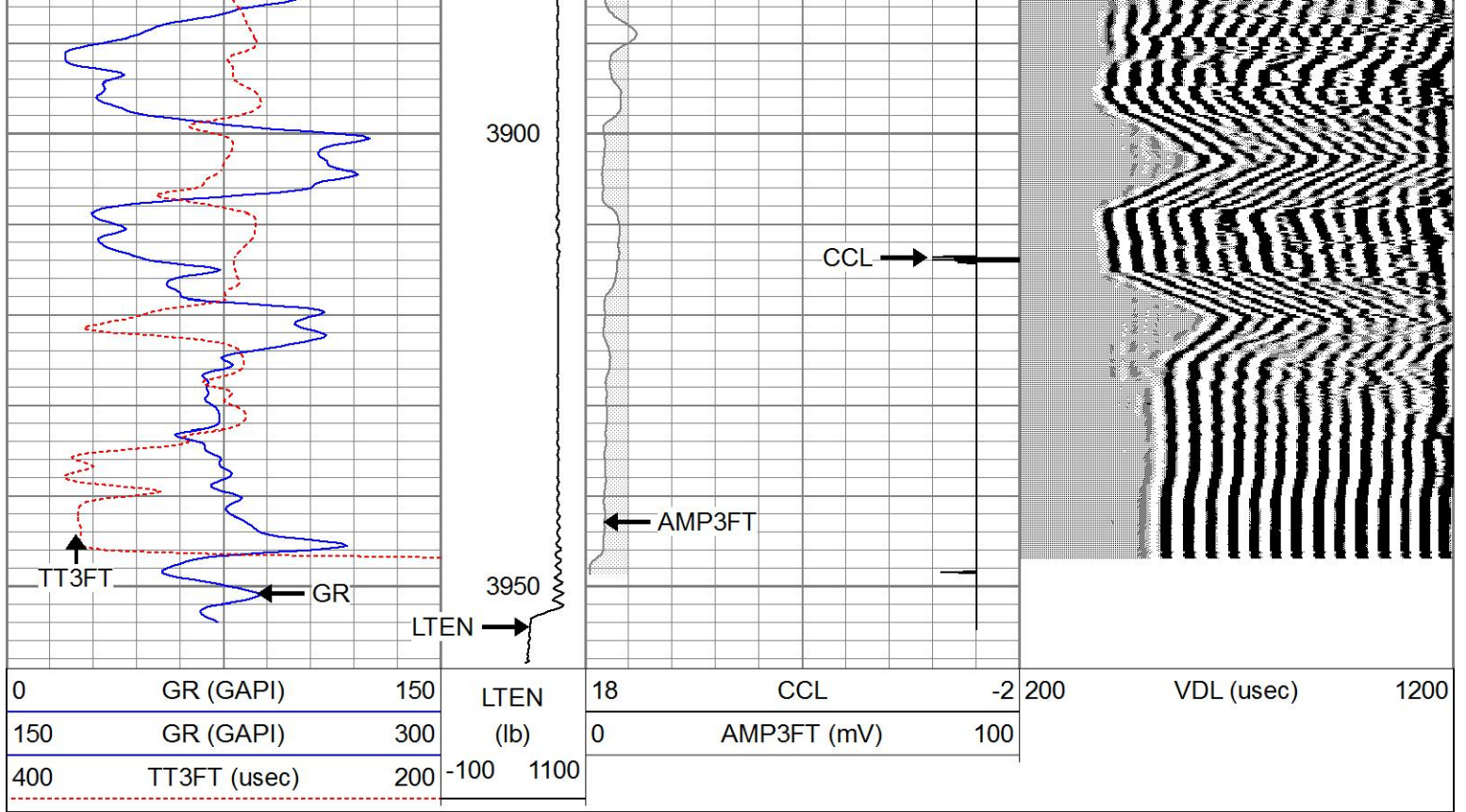
3700

3750

3800

3850

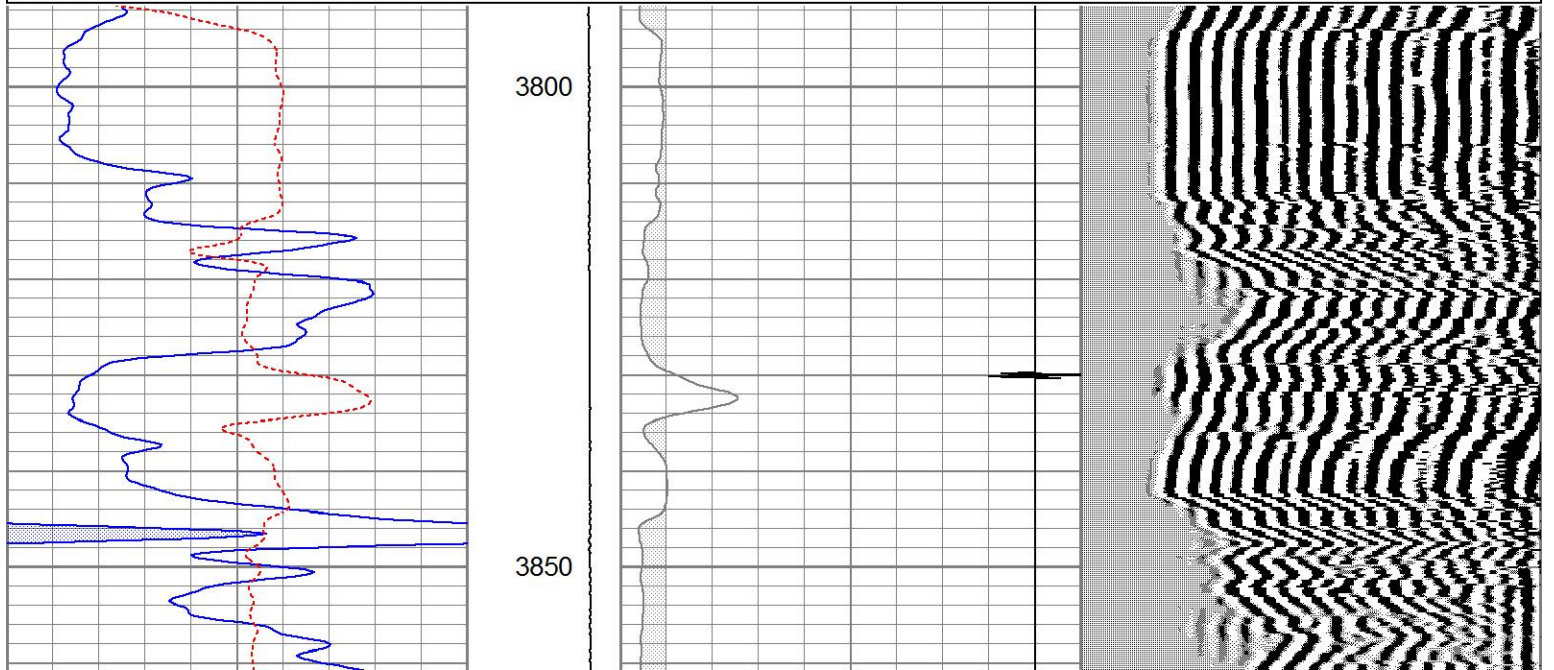


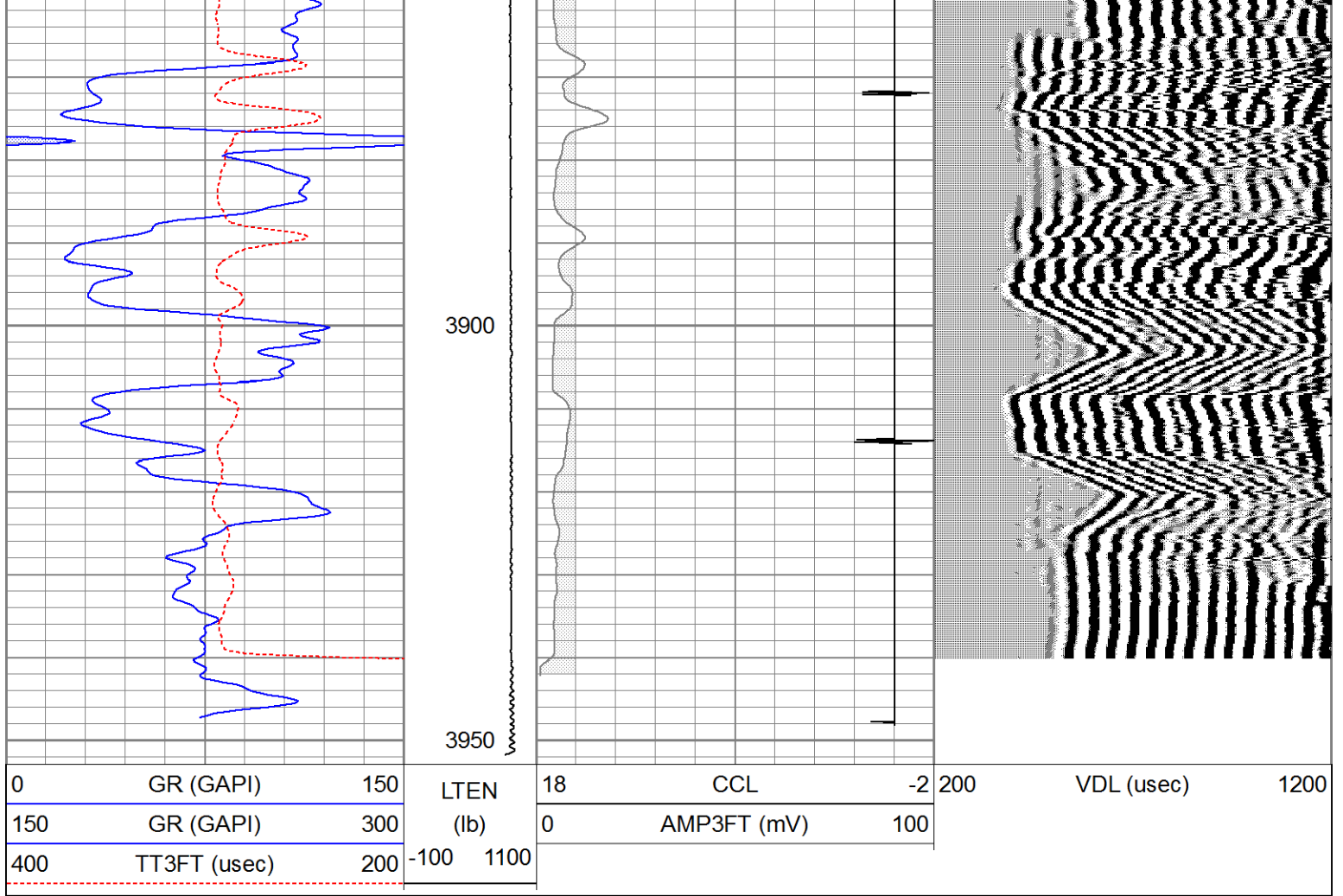


# REPEAT SECTION

Database File jofsutor-ziegler#10cbl.db  
 Dataset Pathname pass1  
 Presentation Format cbl  
 Dataset Creation Tue Sep 07 15:05:46 2021  
 Charted by Depth in Feet scaled 1:240

0	GR (GAPI)	150	LTEN	18	CCL	-2	200	VDL (uSec)	1200
150	GR (GAPI)	300	(lb)	0	AMP3FT (mV)	100			
400	TT3FT (uSec)	200	-100 1100						





### Calibration Report

Database File jofsutor-ziegler#10cbl.db  
 Dataset Pathname pass2  
 Dataset Creation Tue Sep 07 15:12:46 2021

### Gamma Ray Calibration Report

Serial Number: 080224  
 Tool Model: Probe1  
 Performed: Wed Jun 09 10:33:39 2021

Calibrator Value: 200.0 GAPI  
 Background Reading: 15.0 cps  
 Calibrator Reading: 222.7 cps

Sensitivity: 1.0000 GAPI/cps

### Segmented Cement Bond Log Calibration Report

Serial Number: 061007  
 Tool Model: DigitalCBL

Calibration Casing Diameter: 5.500 in  
 Calibration Depth: 2265.842 ft

Master Calibration, performed Tue Sep 07 15:01:13 2021:

Raw (v)		Calibrated (mv)		Results	
Zero	Cal	Zero	Cal	Gain	Offset

3'	0.003	1.187	1.000	71.921	59.879	0.846
5'	0.002	1.178	1.000	71.921	60.316	0.853
SUM						
S1						
S2						
S3						
S4						
S5						
S6						
S7						
S8						


Internal Reference Calibration, performed (Not Performed):

	Raw (v)		Calibrated (v)		Results	
	Zero	Cal	Zero	Cal	Gain	Offset
CAL						

Air Zero Calibration, performed Wed Nov 13 08:15:38 2019:

	Raw (v)		Calibrated (v)		Results	
	Zero		Zero		Offset	
3'	0.000		0.000		0.000	
5'	0.000		0.000		0.000	
SUM						
S1						
S2						
S3						
S4						
S5						
S6						
S7						
S8						

Sensor	Offset (ft)	Schematic	Description	Length (ft)	O.D. (in)	Weight (lb)
CHD	19.89		CHD-sdschd	0.75	1.44	3.00
CENT	19.14		CENT-275 2 3/4" Centralizer	2.94	2.75	10.00
WVF5FT	11.69		Probedig-DigitalCBL (061007) 2 3/4 Bond Tool	8.77	2.75	92.00
WVF3FT	11.69					
CENT	7.44					
WVFSYNC	7.44		CENT-275 2 3/4" Centralizer	2.94	2.75	10.00
CCL	3.67		CCL-Probe (080224)	1.42	2.75	20.00

GR	2.30		GR-Probe1 (080224)	3.08	2.75	40.00
		Dataset: jofsutor-ziegler#10cbl.db: field/well/run1/pass2 Total length: 19.89 ft Total weight: 175.00 lb O.D.: 2.75 in				