



MIDWEST WIRELINE

# MICRORESISTIVITY LOG

Company Russell Oil, Inc.  
 Well Ben Wieland #14-1  
 Field Wildcat  
 County Logan  
 State Kansas

Company Russell Oil, Inc.  
 Well Ben Wieland #14-1  
 Field Wildcat  
 County Logan State Kansas

Location: API #: 15-109-21611-00-00  
 NE SW SW SW  
 455' FSL & 435' FWL  
 SEC 14 TWP 11S RGE 32W  
 Permanent Datum Ground Level Elevation 3043'  
 Log Measured From Kelly Bushing  
 Drilling Measured From Kelly Bushing  
 Other Services  
 CNL/CDL  
 DIL  
 Elevation  
 K.B. 3048'  
 D.F.  
 G.L. 3043'

Date	6/17/2021
Run Number	Two
Depth Driller	4718'
Depth Logger	4718'
Bottom Logged Interval	4717'
Top Log Interval	3700'
Casing Driller	8.625" @ 323'
Casing Logger	325'
Bit Size	7.875"
Type Fluid in Hole	Chemical
Salinity, ppm CL	2500
Density / Viscosity	9.4 50
pH / Fluid Loss	10.5 8.8
Source of Sample	FLOWLINE
Rm @ Meas. Temp	0.8 @ 75
Rmt @ Meas. Temp	0.6 @ 75
Rmc @ Meas. Temp	1.08 @ 75
Source of Rmf / Rmc	CHARTS
Rm @ BHT	0.49 @ 123
Operating Rig Time	3.5 Hours
Max Rec. Temp. F	123 Deg F
Equipment Number	P-24
Location	HAYS
Recorded By	T. Martin
Witnessed By	Kitt Noah

<<< Fold Here >>>

All interpretations are opinions based on inferences from electrical or other measurements and Midwest Wireline LLC cannot and does not guarantee the accuracy or correctness of any interpretation, and Midwest Wireline LLC will not be liable or responsible for any loss, costs, damages, or expenses incurred or sustained by anyone resulting from any interpretation made by any of our officers, agents or employees.

Comments

N/A DENOTES NOT AVAILABLE OR NON-APPLICABLE.

Oakley, KS, Old 40 and 83, 2 S on 83, E then N into

Log Measured From: Kelly Bushing 5 Ft. Above Permanent Datum

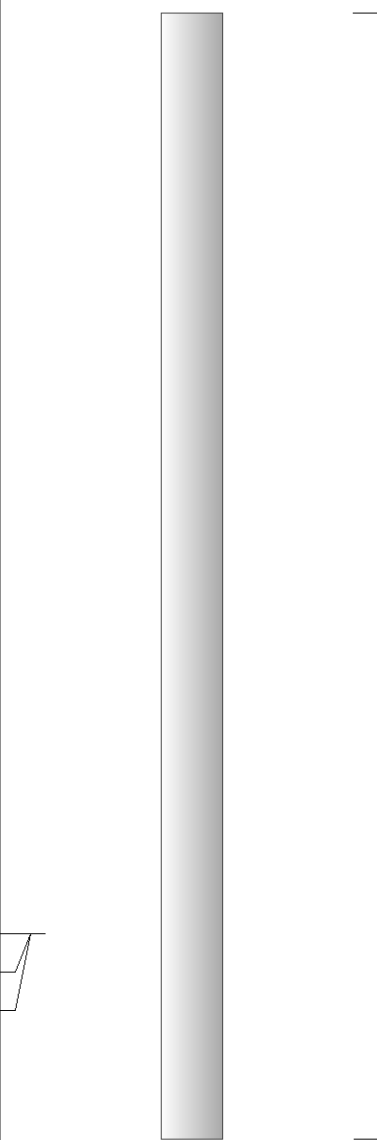
THANK YOU FOR USING MIDWEST WIRELINE LLC  
 785-625-3858

Your Midwest Wireline Crew

Engineer: T. Martin  
 Operator:  
 Operator:  
 Operator:

This Log Record Was Witnessed By

Primary Witness: Kitt Noah  
 Secondary Witness:  
 Secondary Witness:  
 Secondary Witness:

Sensor	Offset (ft)	Schematic	Description	Length (ft)	O.D. (in)	Weight (lb)
MCAL MI MN	1.00 1.00 1.00		ML-Pengo (Pengo3)	5.50	3.50	100.00

Dataset: russell\_ben wieland #14-1.db: field/well/MEL/pass4  
 Total length: 5.50 ft  
 Total weight: 100.00 lb  
 O.D.: 3.50 in

## Log Variables

Database: C:\ProgramData\Warrior\Data\russell\_ben wieland #14-1.db  
 Dataset: field/well/Stack/pass3.1/\_vars\_

### Top - Bottom

A	BOREID	BOTTEMP	CASEOD	CASETHCK	FLUIDDEN	M	MATRXDEN
	in	degF	in	in	g/cc		g/cc
1	7.875	123	5.5	0	1	2	2.71
NPORSEL	PERFS	SNDERR	SNDERRM	SPSHIFT	SRFTEMP	SZCOR	TDEPTH
Limestone	No	mmho/m	mmho/m	mV	degF	Off	ft
		0	0	470	90		4718

### Variable Description

A : Cement Factor (a)  
 BOREID : Borehole I.D.  
 BOTTEMP : Bottom Hole Temperature  
 CASEOD : Casing O.D.  
 CASETHCK : Casing Thickness  
 FLUIDDEN : Fluid Density  
 M : Cement Exp (m)  
 MATRXDEN : Matrix Density

NPORSEL : Neutron Porosity Curve Select  
 PERFS : Perforation Flag  
 SNDERR : Deep Sonde Error Correction  
 SNDERRM : Medium Sonde Error Correction  
 SPSHIFT : S.P. Baseline Offset  
 SRFTEMP : Surface Temperature  
 SZCOR : CN Size Cor. ?  
 TDEPTH : Total Depth



MIDWEST WIRELINE

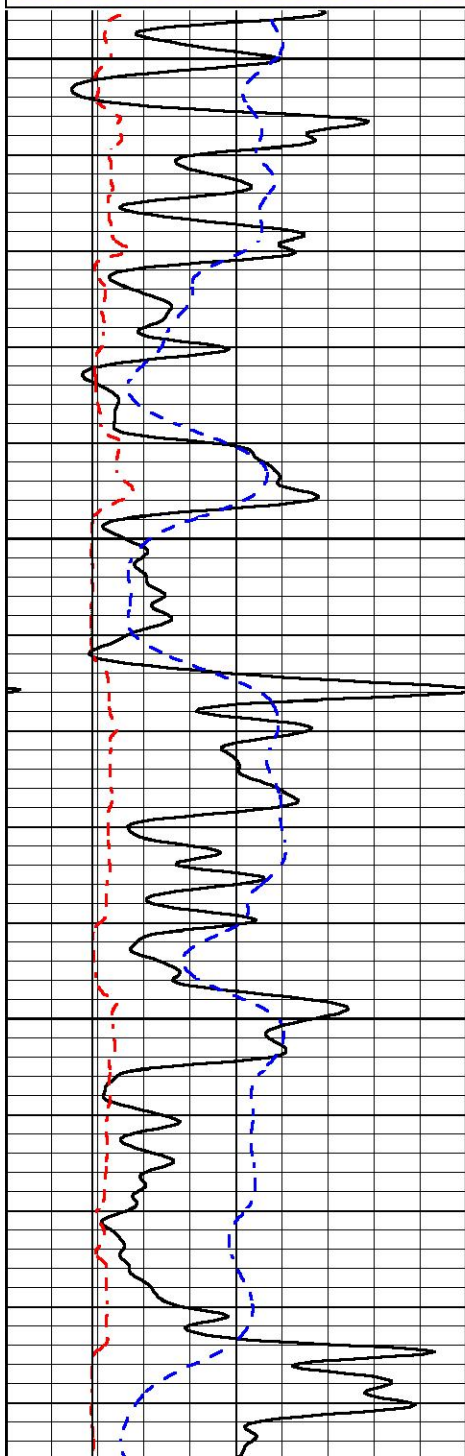
# DETAIL SECTION

## MAIN PASS

Database File russell\_ben wieland #14-1.db  
 Dataset Pathname Stack/pass3.1  
 Presentation Format \_micro  
 Dataset Creation Thu Jun 17 23:17:21 2021  
 Charted by Depth in Feet scaled 1:240

0	GAMMA RAY (GAPI)	150
6	MCAL (in)	16
6	Bit Size (in)	16
-200	sp (mV)	0

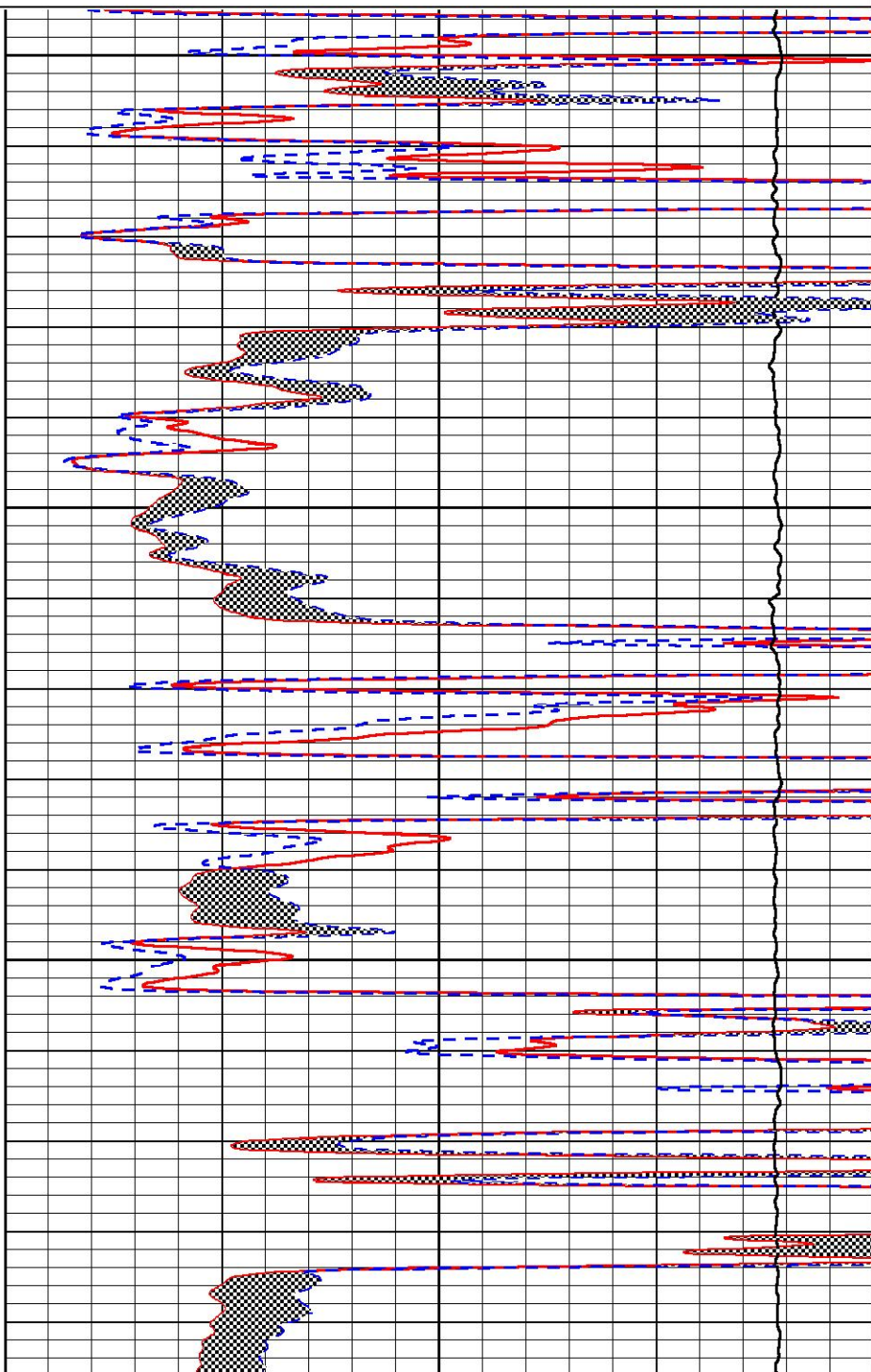
0	MICRO INVERSE 1 X 1 (Ohm-m)	40
0	MICRO NORMAL 2" (Ohm-m)	40
10000	Line Weight (lb)	0

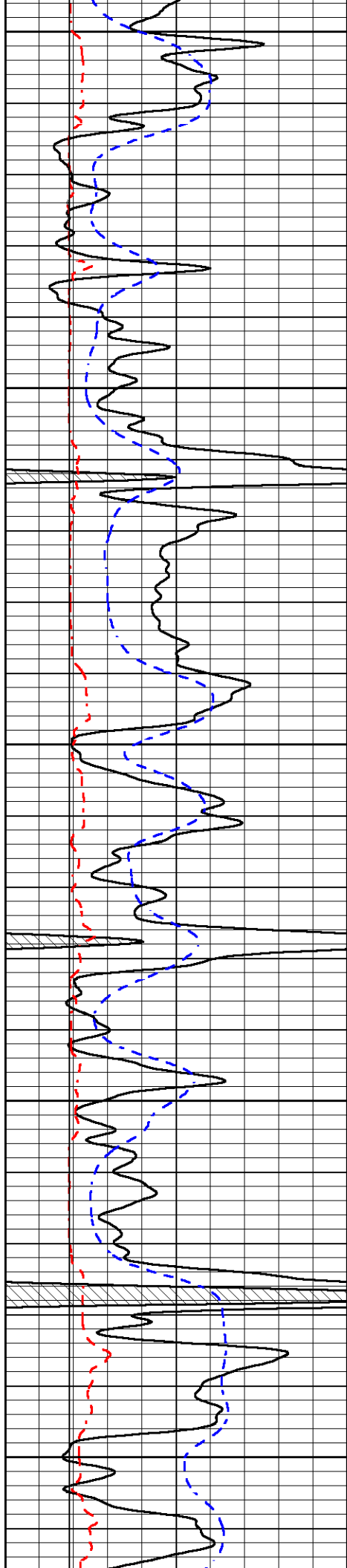


3700

3750

3800





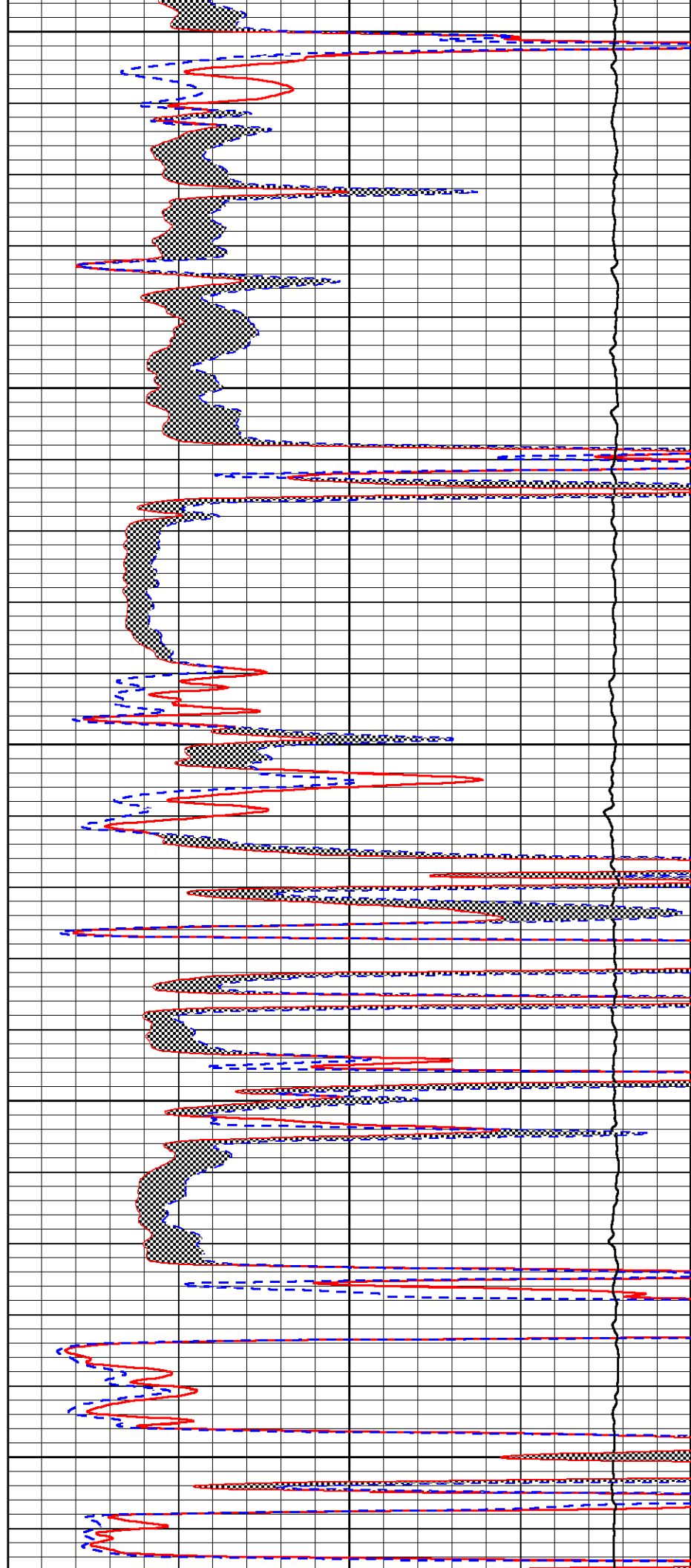
3850

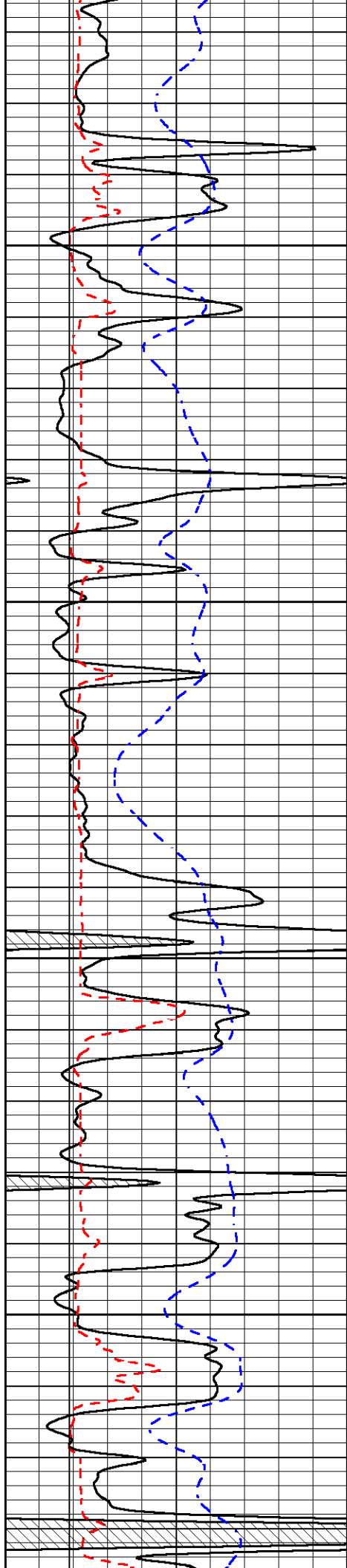
3900

3950

4000

4050



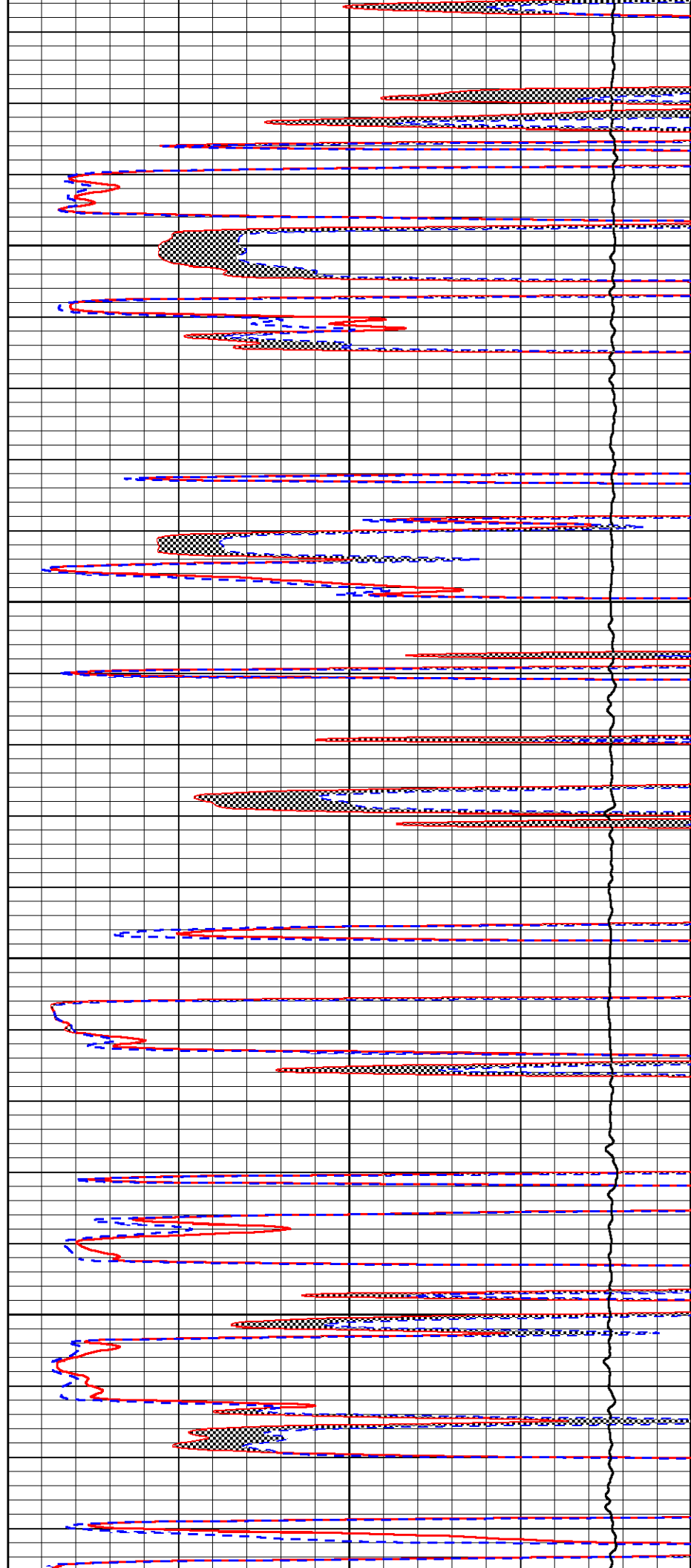


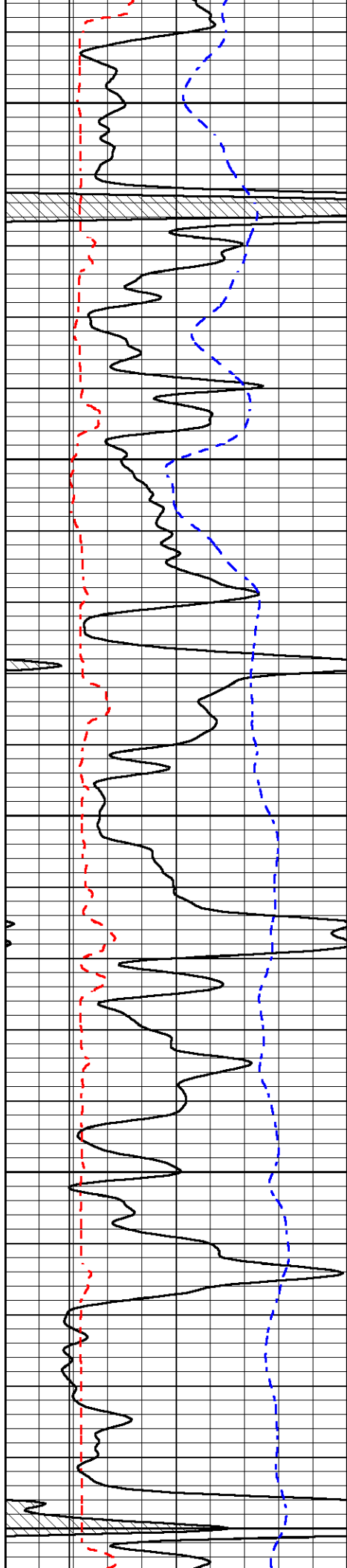
4100

4150

4200

4250





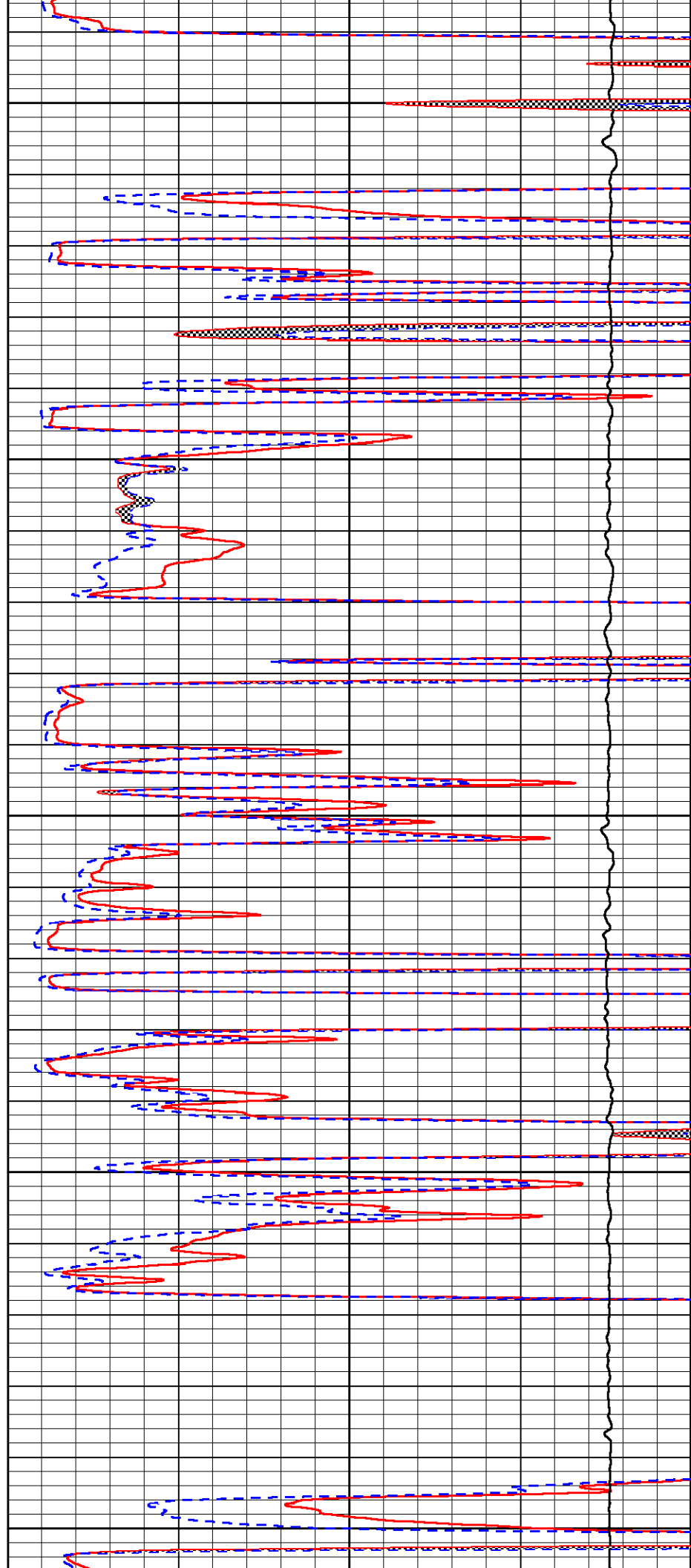
4300

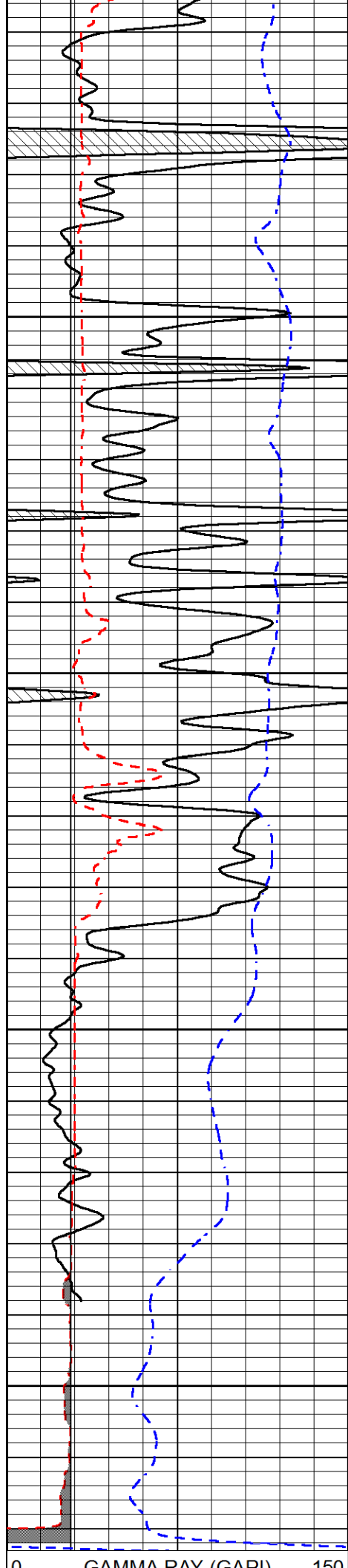
4350

4400

4450

4500



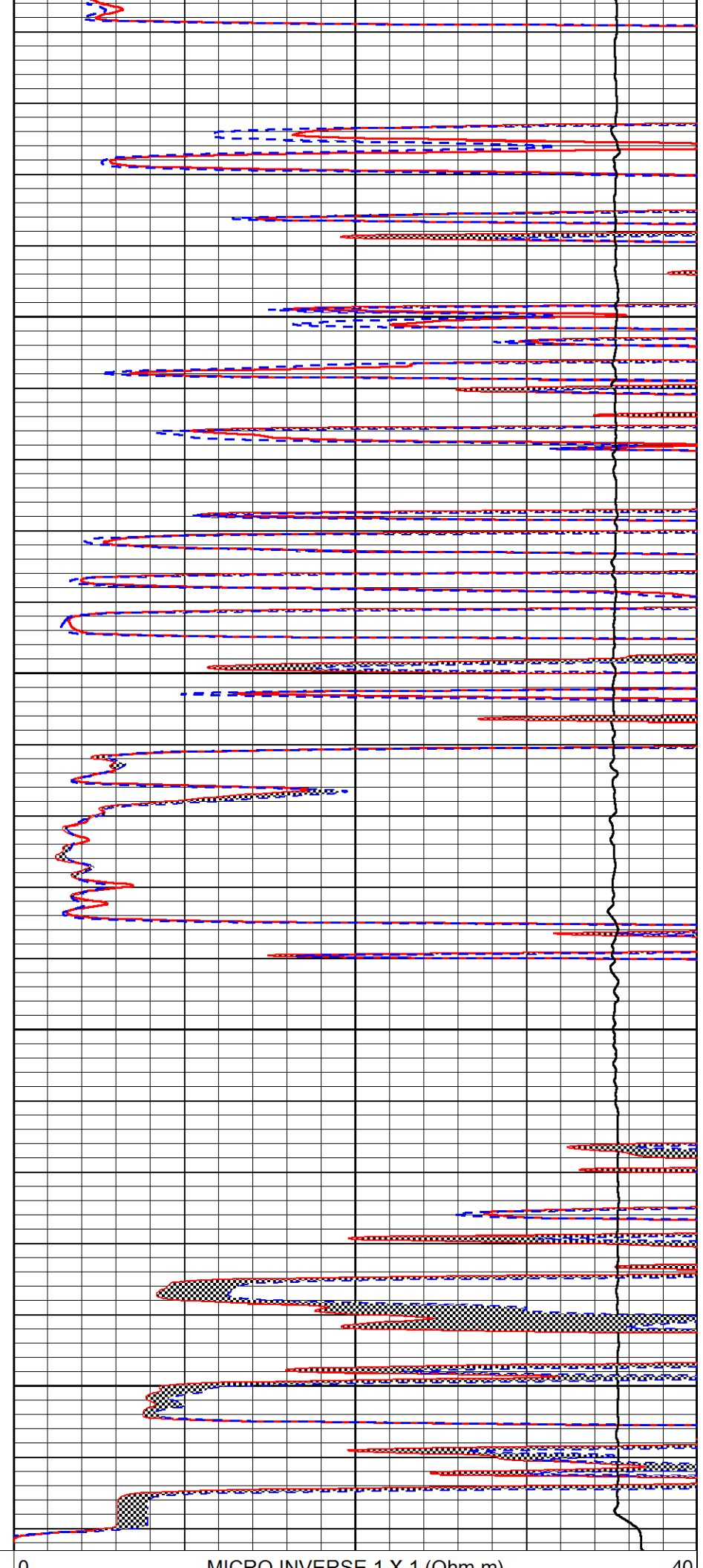


4550

4600

4650

4700



MICRO INVERSE 1 X 1 (Ohm m)

0	GAMMA RAY (GAPI)	150
6	MCAL (in)	16
6	Bit Size (in)	16
-200	sp (mV)	0

0	MICRO INVERSE 1 X 1 (Ohm-m)	40
0	MICRO NORMAL 2" (Ohm-m)	40
10000	Line Weight (lb)	0



MIDWEST WIRELINE

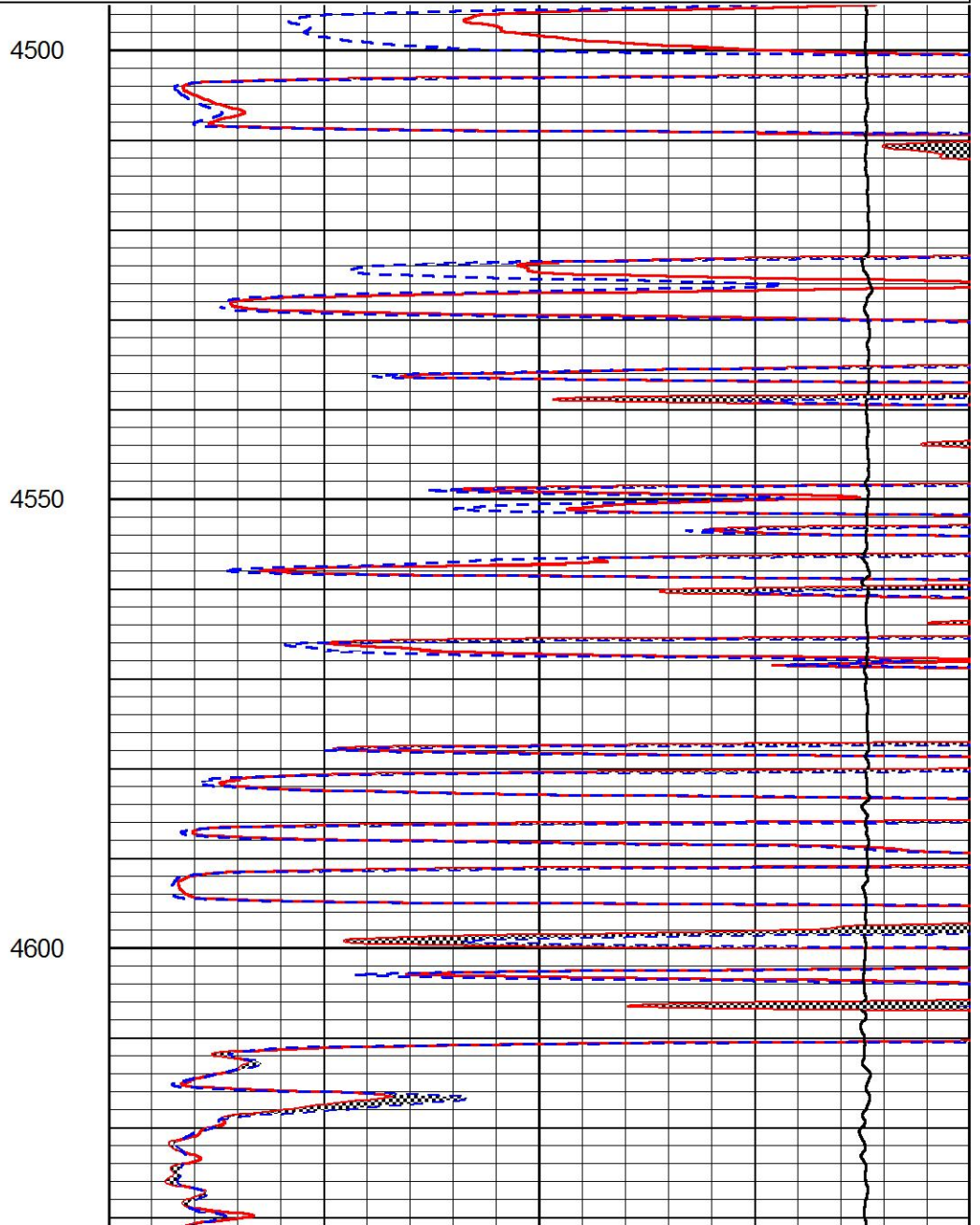
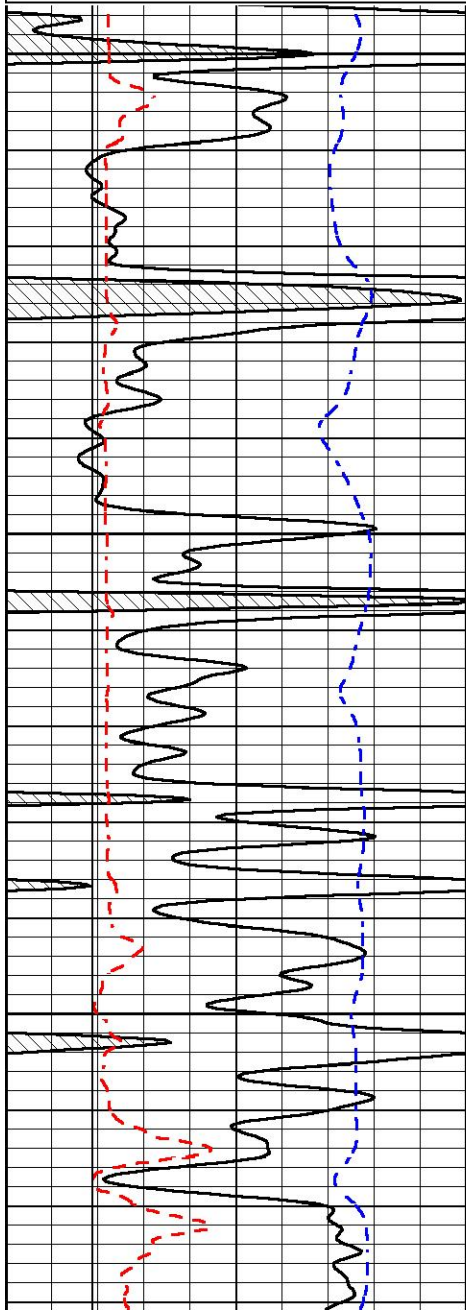
# REPEAT SECTION

## REPEAT PASS

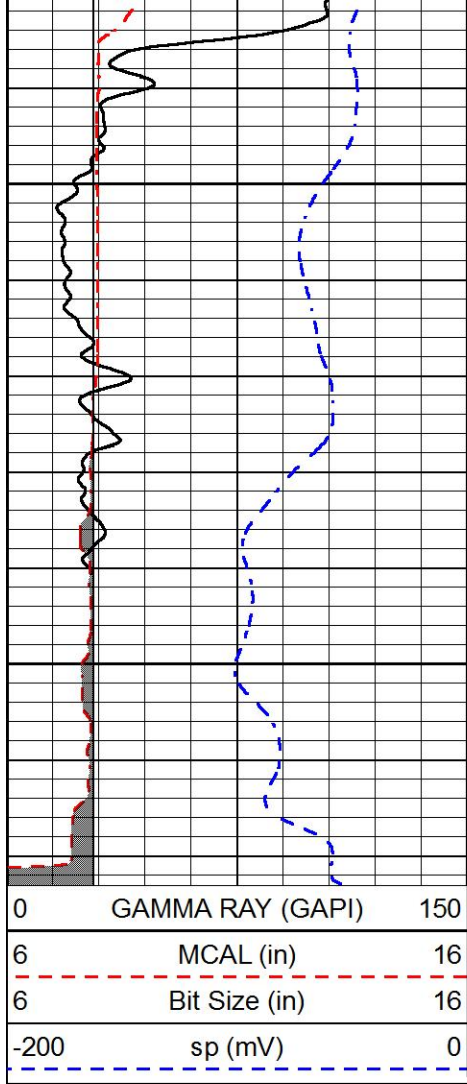
Database File russell\_ben\_wieland #14-1.db  
 Dataset Pathname Stack/pass2.1  
 Presentation Format \_micro  
 Dataset Creation Thu Jun 17 22:35:34 2021  
 Charted by Depth in Feet scaled 1:240

0	GAMMA RAY (GAPI)	150
6	MCAL (in)	16
6	Bit Size (in)	16
-200	sp (mV)	0

0	MICRO INVERSE 1 X 1 (Ohm-m)	40
0	MICRO NORMAL 2" (Ohm-m)	40
10000	Line Weight (lb)	0

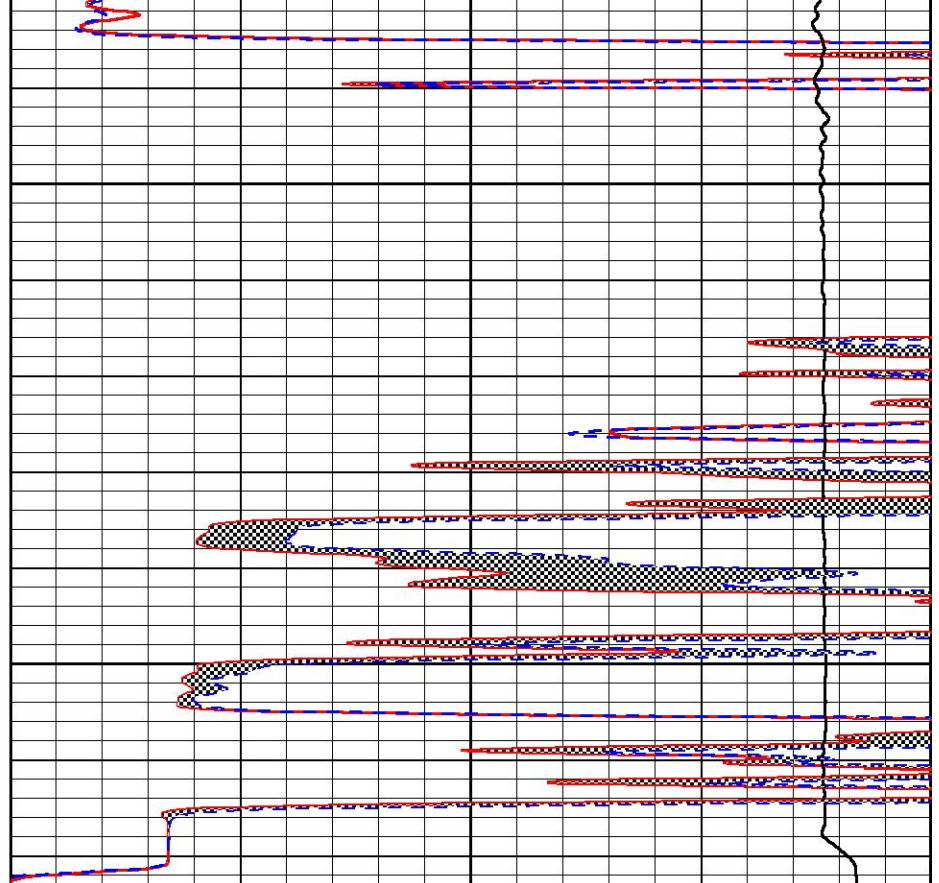






4650

4700



0	MICRO INVERSE 1 X 1 (Ohm-m)	40
0	MICRO NORMAL 2" (Ohm-m)	40
10000	Line Weight (lb)	0



MIDWEST WIRELINE

Company Russell Oil, Inc.  
 Well Ben Wieland #14-1  
 Field Wildcat  
 County Logan  
 State Kansas