



MIDWEST WIRELINE

DUAL COMP POROSITY LOG

Company **Russell Oil, Inc.**
 Well **Ben Wieland #14-1**
 Field **Wildcat**
 County **Logan** State **Kansas**

Company **Russell Oil, Inc.**
 Well **Ben Wieland #14-1**
 Field **Wildcat**
 County **Logan**
 State **Kansas**

Location: **API #: 15-109-21611-00-00**
NE SW SW SW
455' FSL & 435' FWL
SEC 14 TWP 11S RGE 32W
 Permanent Datum **Ground Level** Elevation **3043'**
 Log Measured From **Kelly Bushing**
 Drilling Measured From **Kelly Bushing**
 Other Services **DIL/MEL**
 K.B. **3048'**
 D.F. **3043'**
 G.L.

Date	6/17/2021						
Run Number	One						
Type Log	CNL/CDL						
Depth Driller	4718'						
Depth Logger	4718'						
Bottom Logged Interval	4697'						
Top Logged Interval	3700'						
Type Fluid In Hole	Chemical						
Salinity, PPM CL	2500						
Density	9.4						
Level	Full						
Max. Rec. Temp. F	123 Deg F						
Operating Rig Time	3.5 Hours						
Equipment -- Location	P-24 HAYS						
Recorded By	T. Martin						
Witnessed By	Kitt Noah						
Borehole Record							
Run No.	Bit	From	To	Size	Wgt.	From	To
One	12.25"	00'	323'	8.625"	23#	00'	323'
Two	7.875"	323'	TD				
Casing Record							

<<< Fold Here >>>

All interpretations are opinions based on inferences from electrical or other measurements and Midwest Wireline Services, LLC cannot and does not guarantee the accuracy or correctness of any interpretation, and Midwest Wireline Services, LLC will not be liable or responsible for any loss, costs, damages, or expenses incurred or sustained by anyone resulting from any interpretation made by any of our officers, agents or employees.

Comments

N/A DENOTES NOT AVAILABLE OR NON-APPLICABLE.

Oakley, KS, Old 40 and 83, 2 S on 83, E then N into

Log Measured From: Kelly Bushing 5 Ft. Above Permanent Datum

THANK YOU FOR USING MIDWEST WIRELINE LLC
 785-625-3858

Your Midwest Wireline Crew		This Log Record Was Witnessed By	
Engineer: T. Martin	Operator:	Primary Witness: Kitt Noah	Secondary Witness:
Operator:	Operator:	Secondary Witness:	Secondary Witness:
Operator:		Secondary Witness:	

Sensor	Offset (ft)	Schematic	Description	Length (ft)	O.D. (in)	Weight (lb)
GR	33.00		GR-M&W (233-M&W)	3.00	3.50	50.00
CNLSC CNSSC	29.90 29.15		CNT-M&W (207-MW)	5.50	3.50	100.00
LSD DCAL SSD	20.85 20.83 20.35		CDL-M&W (934-226)	8.50	4.00	250.00
RLL3F RLL3	15.80 15.80		DIL-PSI HIGH TEMP (952-828)	18.50	3.50	220.00
CILD	8.00					
CILM	4.70					
SP	0.20					

Dataset: russell_ben wieland #14-1.db: field/well/Stack/pass3.1
 Total length: 35.50 ft
 Total weight: 620.00 lb
 O.D.: 4.00 in

Log Variables

DatabaseC:\ProgramData\Warrior\Data\russell_ben wieland #14-1.db
 Dataset field/well/Stack/pass3.1/_vars_

Top - Bottom

A	BOREID in	BOTTEMP degF	CASEOD in	CASETHCK in	FLUIDDEN g/cc	M	MATRXDEN g/cc
1	7.875	123	5.5	0	1	2	2.71
NPORSEL	PERFS	SNDERR mmho/m	SNDERRM mmho/m	SPSHIFT mV	SRFTEMP degF	SZCOR	TDEPTH ft
Limestone	No	0	0	470	90	Off	4718

Variable Description

A : Cement Factor (a)
 BOREID : Borehole I.D.
 BOTTEMP : Bottom Hole Temperature
 CASEOD : Casing O.D.
 CASETHCK : Casing Thickness
 FLUIDDEN : Fluid Density
 M : Cement Exp (m)
 MATRXDEN : Matrix Density

NPORSEL : Neutron Porosity Curve Select
 PERFS : Perforation Flag
 SNDERR : Deep Sonde Error Correction
 SNDERRM : Medium Sonde Error Correction
 SPSHIFT : S.P. Baseline Offset
 SRFTEMP : Surface Temperature
 SZCOR : CN Size Cor. ?
 TDEPTH : Total Depth



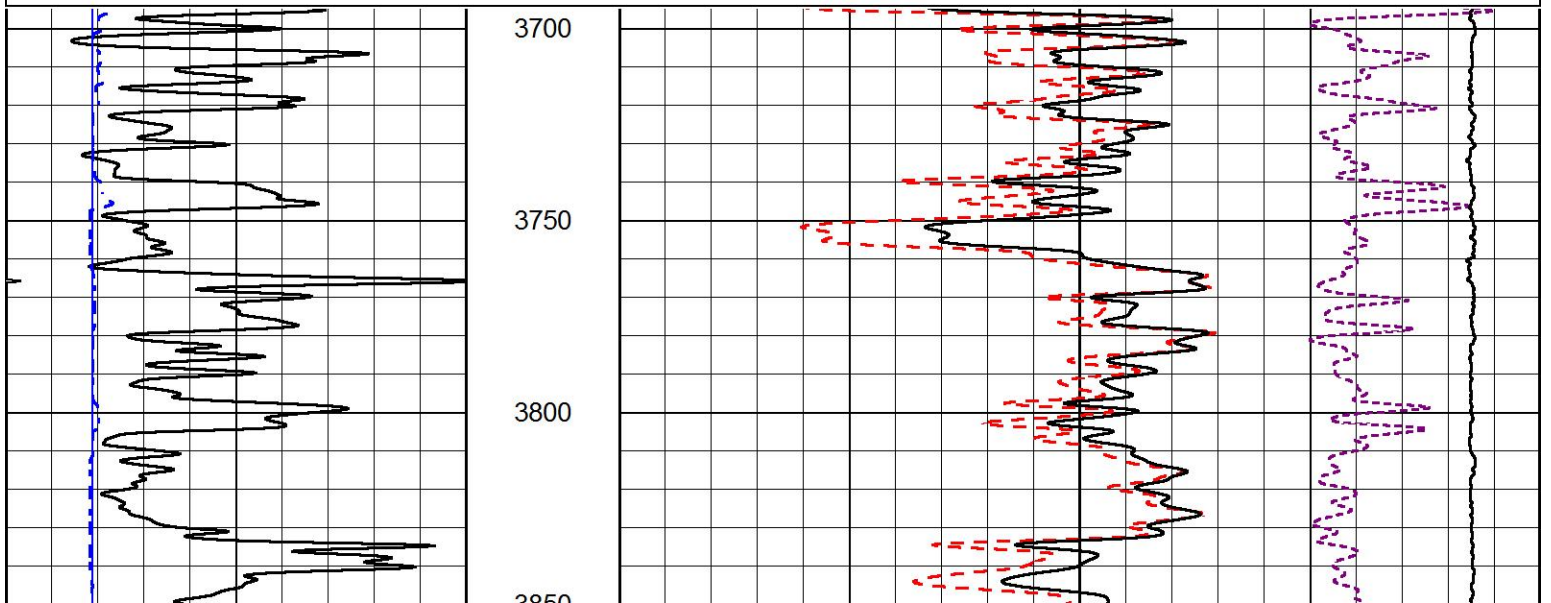
2" SCALE BULK DENSITY

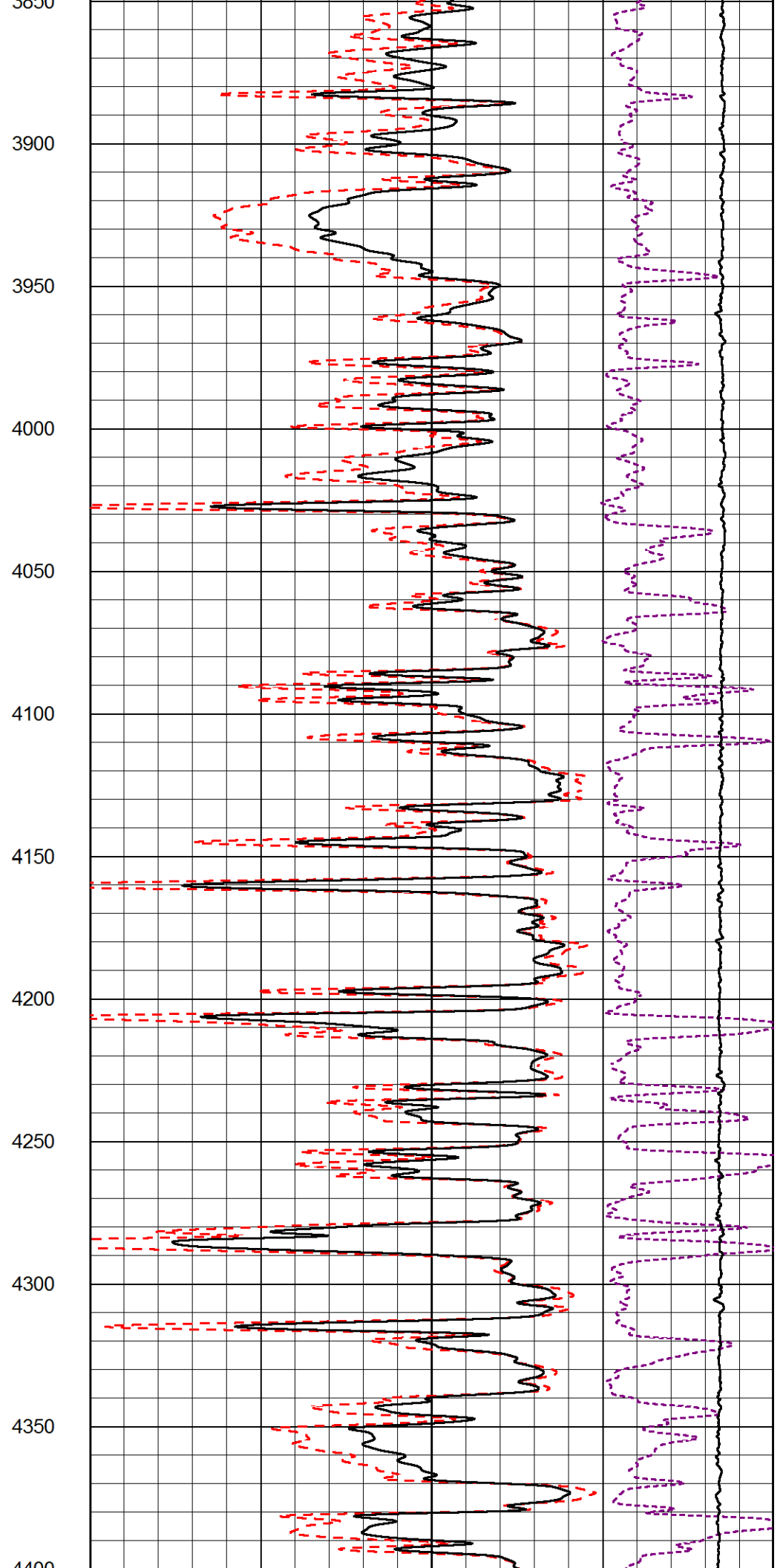
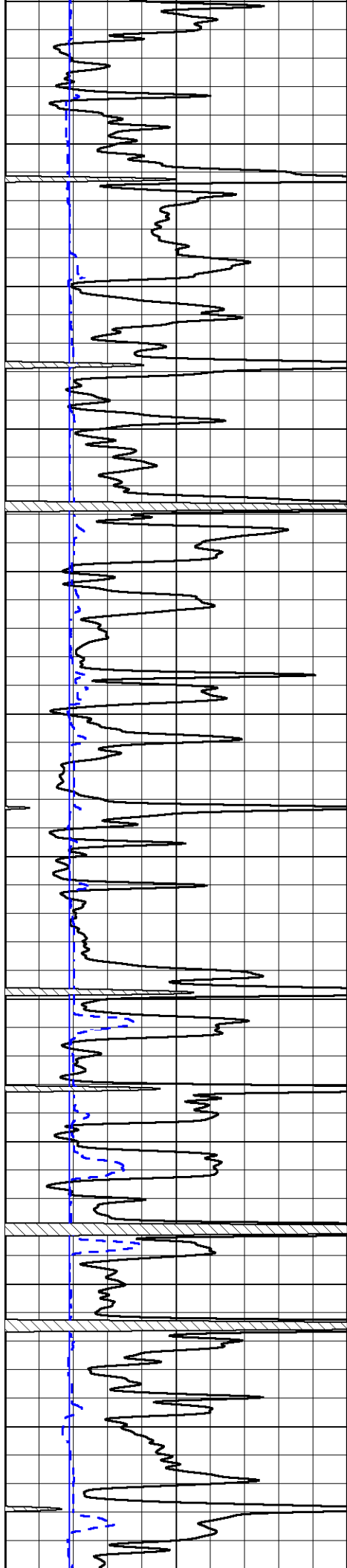
MAIN PASS

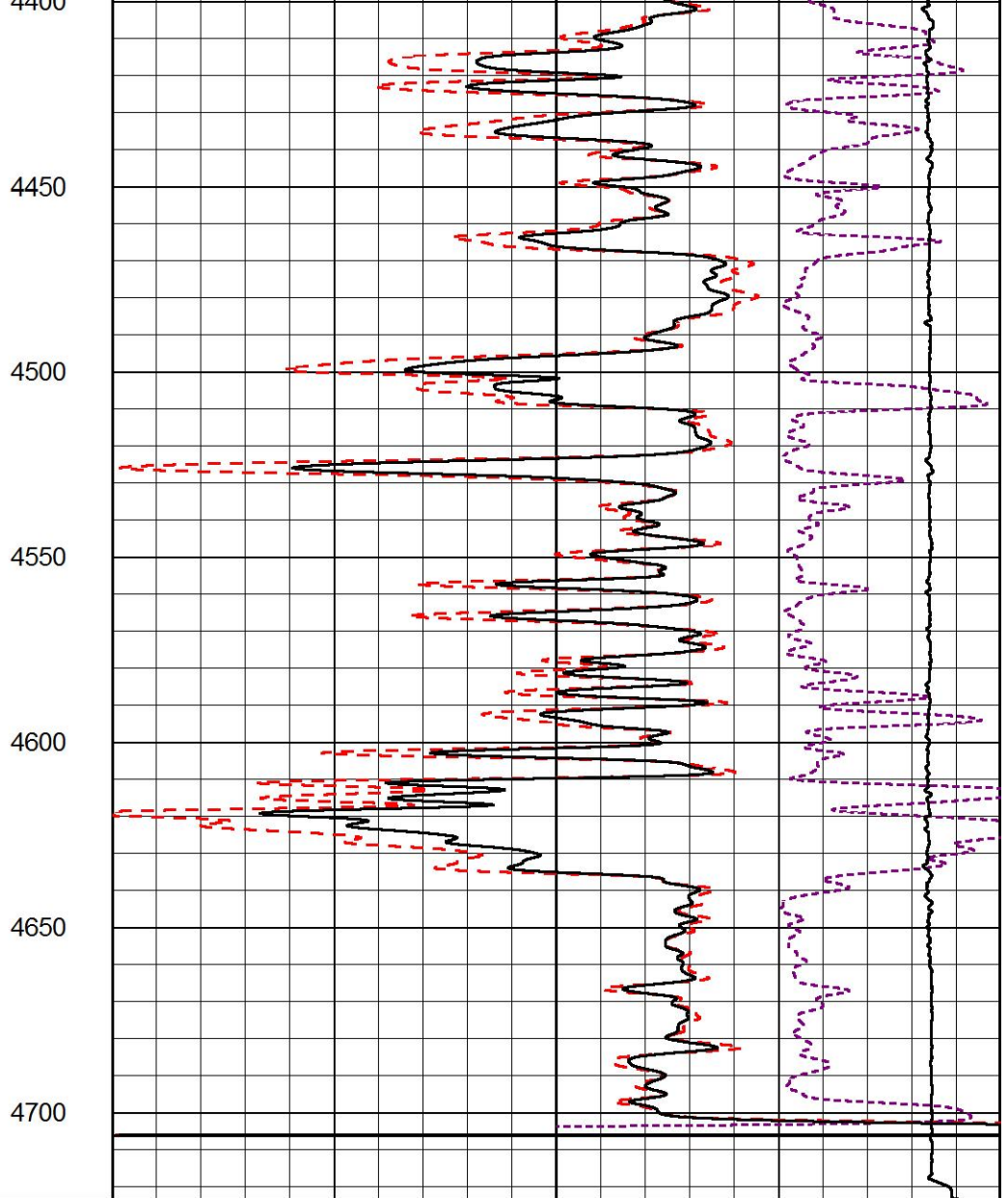
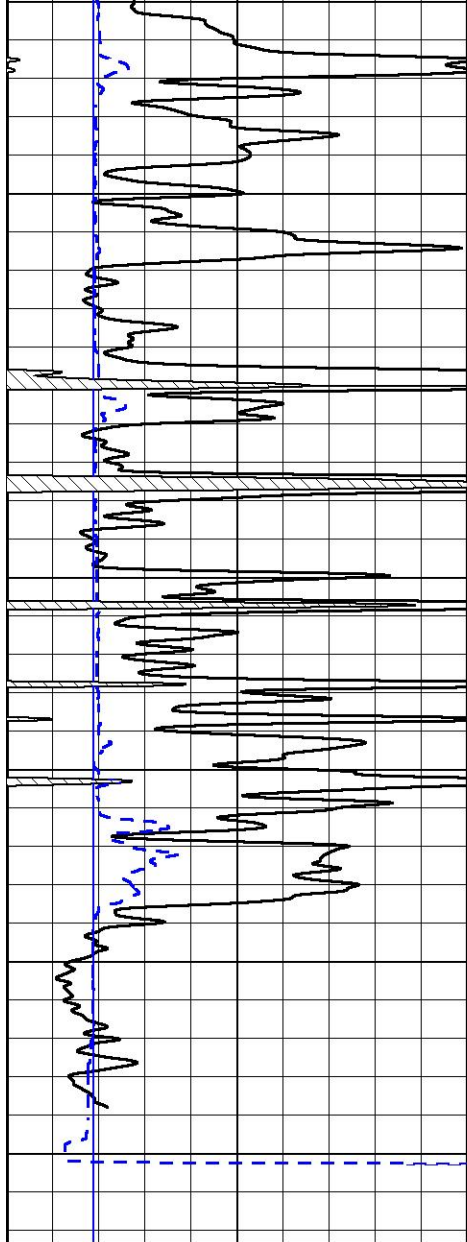
Database File russell_ben wieland #14-1.db
 Dataset Pathname Stack/pass3.3
 Presentation Format _cdl
 Dataset Creation Thu Jun 17 22:37:05 2021
 Charted by Depth in Feet scaled 1:600

0	GAMMA RAY (GAPI)	150
6	DCAL (in)	16

COMPENSATED DENSITY (2.65 MA)	
30	(pu) -10
2	BULK DENSITY (g/cc) 3
15000	LINE TENSION (lb) 0
-0.25	CORRECTION (g/cc) 0.25







0	GAMMA RAY (GAPI)	150
6	DCAL (in)	16

COMPENSATED DENSITY (2.65 MA)		
30	(pu)	-10
2	BULK DENSITY (g/cc)	3
15000	LINE TENSION (lb)	0
-0.25	CORRECTION (g/cc)	0.25



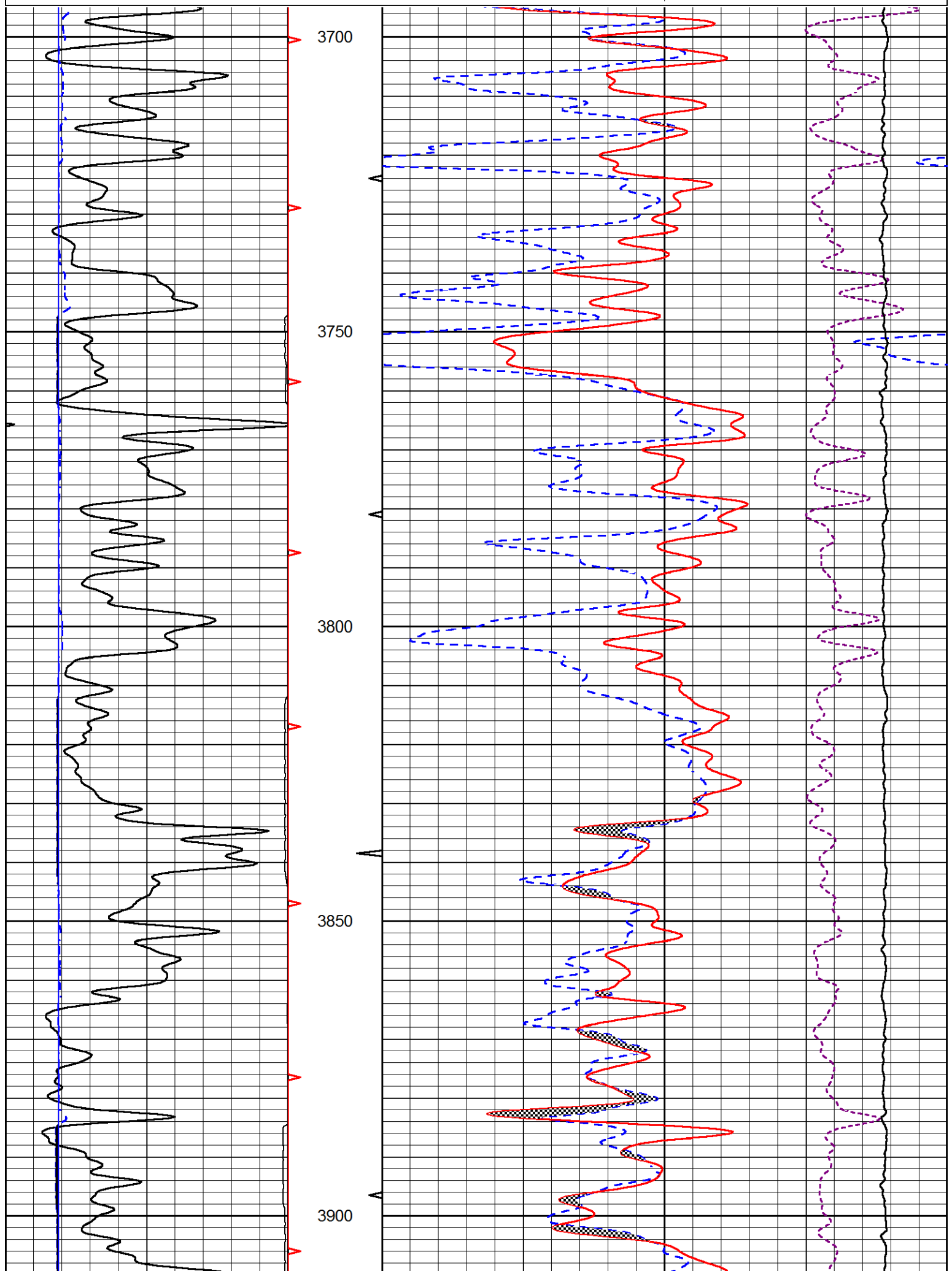
DETAIL SECTION

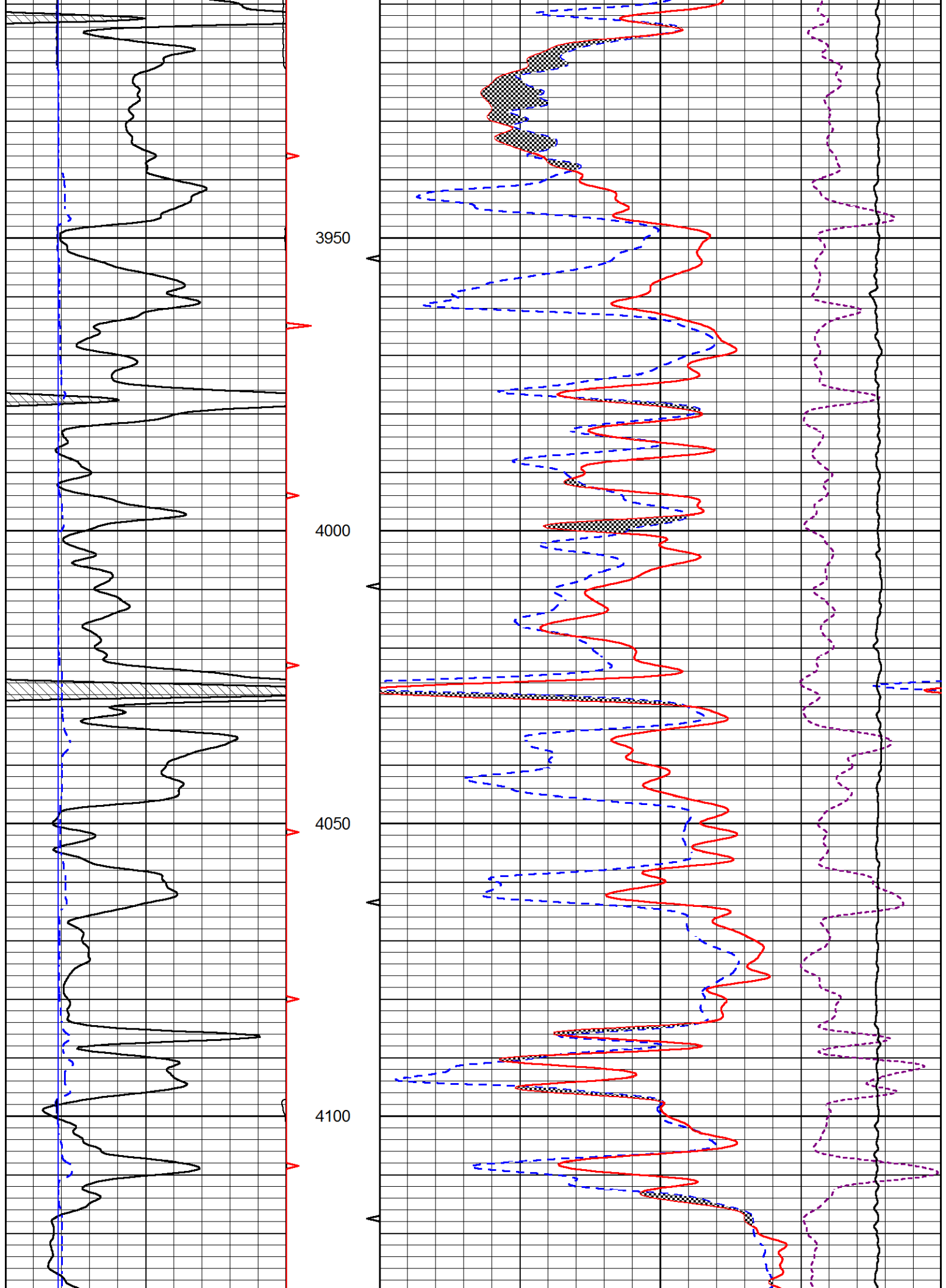
MAIN PASS

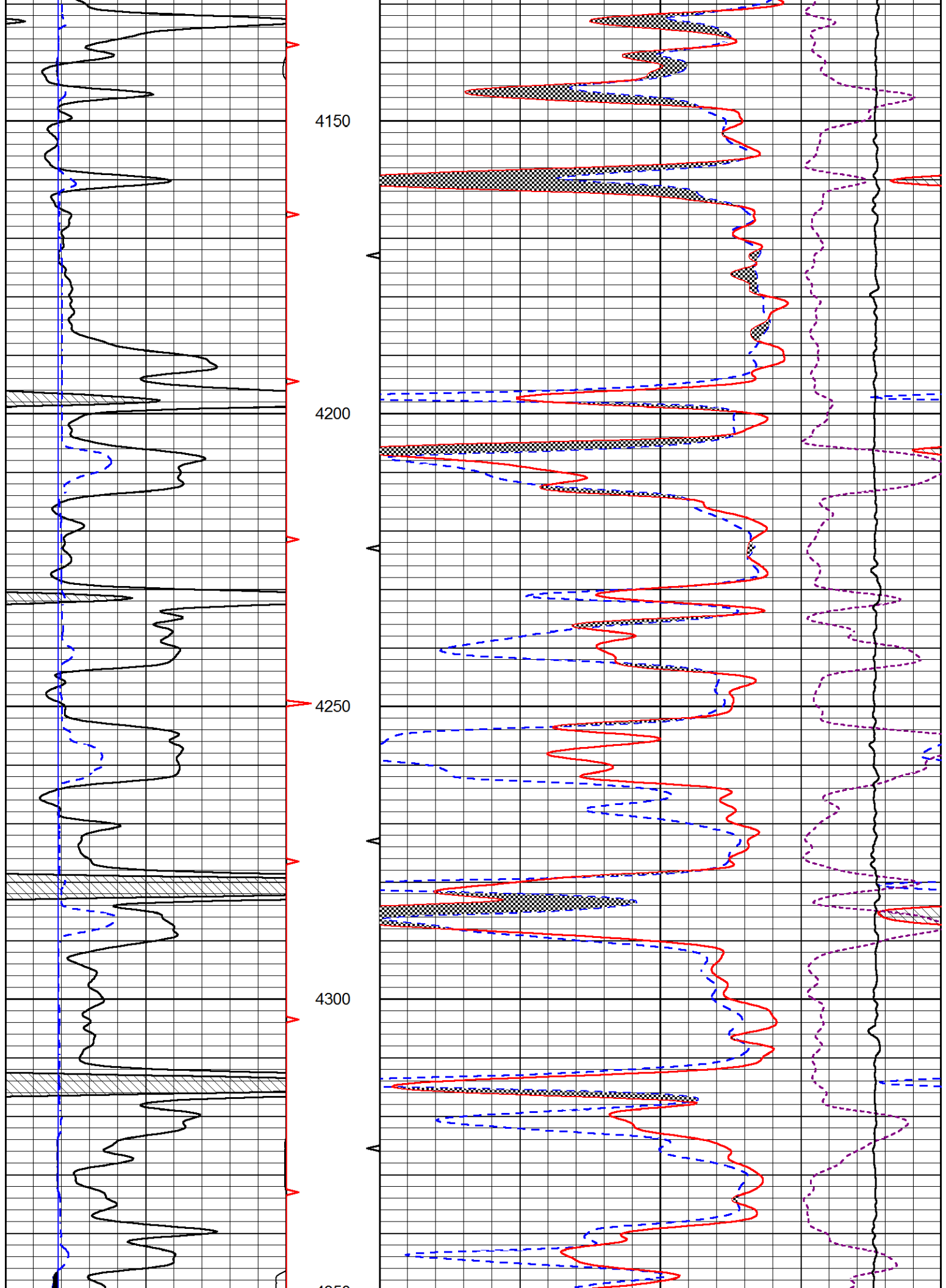
Database File russell_ben wieland #14-1.db
 Dataset Pathname Stack/pass3.1
 Presentation Format _CNDLS~1
 Dataset Creation Thu Jun 17 23:17:21 2021
 Charted by Depth in Feet scaled 1:240

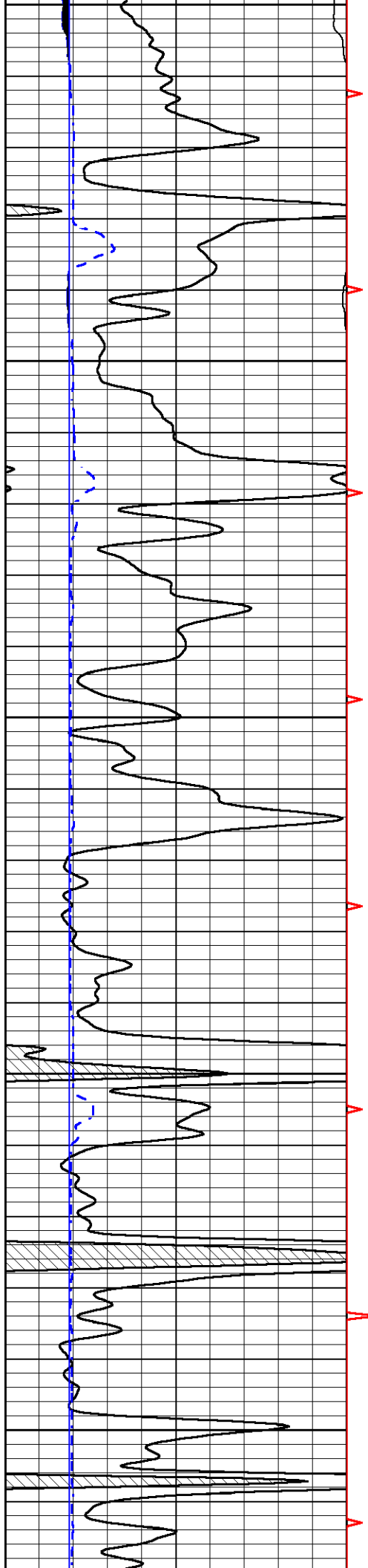
0	GAMMA RAY (GAPI)	150
6	DCAL (in)	16

30	CNPOR (pu)	-10
30	DPOR (pu)	-10
10000	LINE TENSION (lb)	0









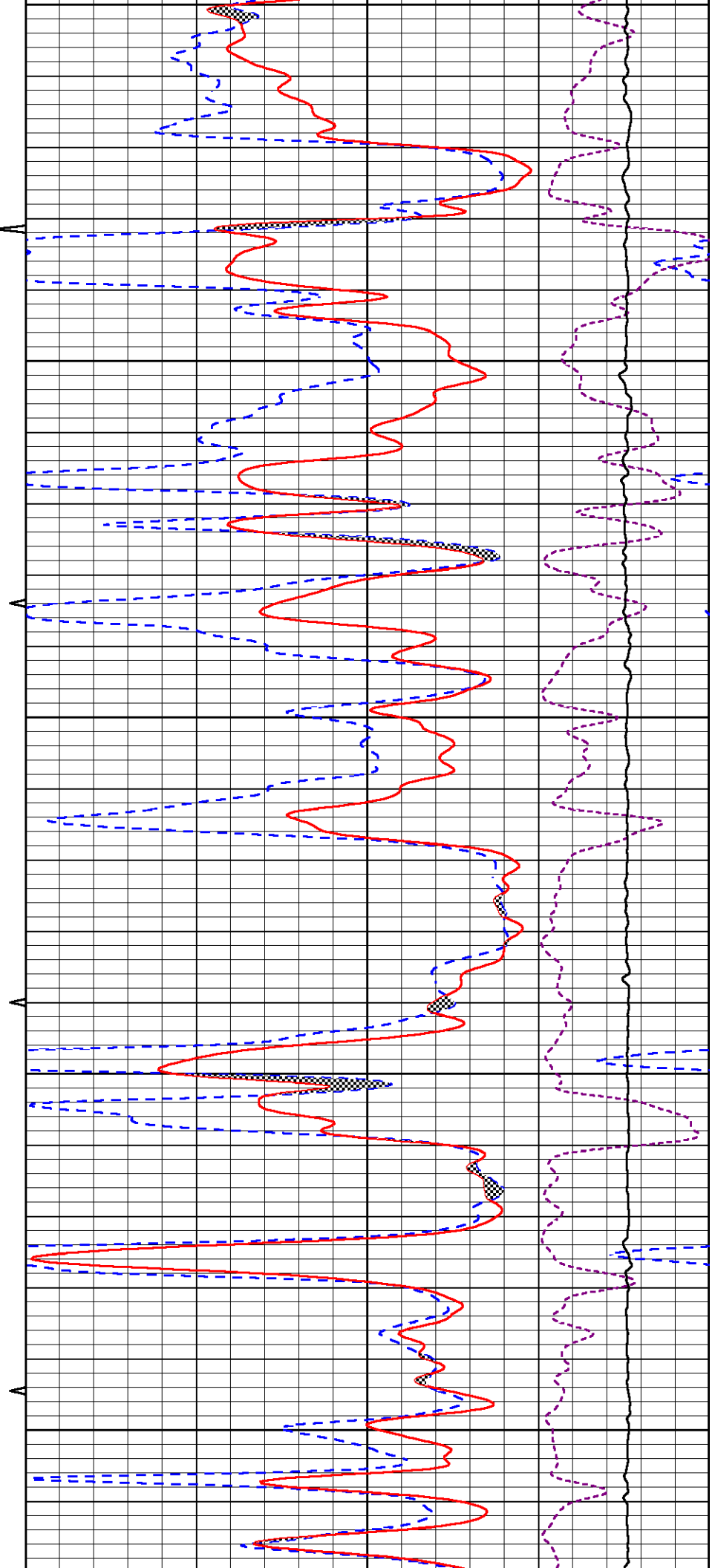
4350

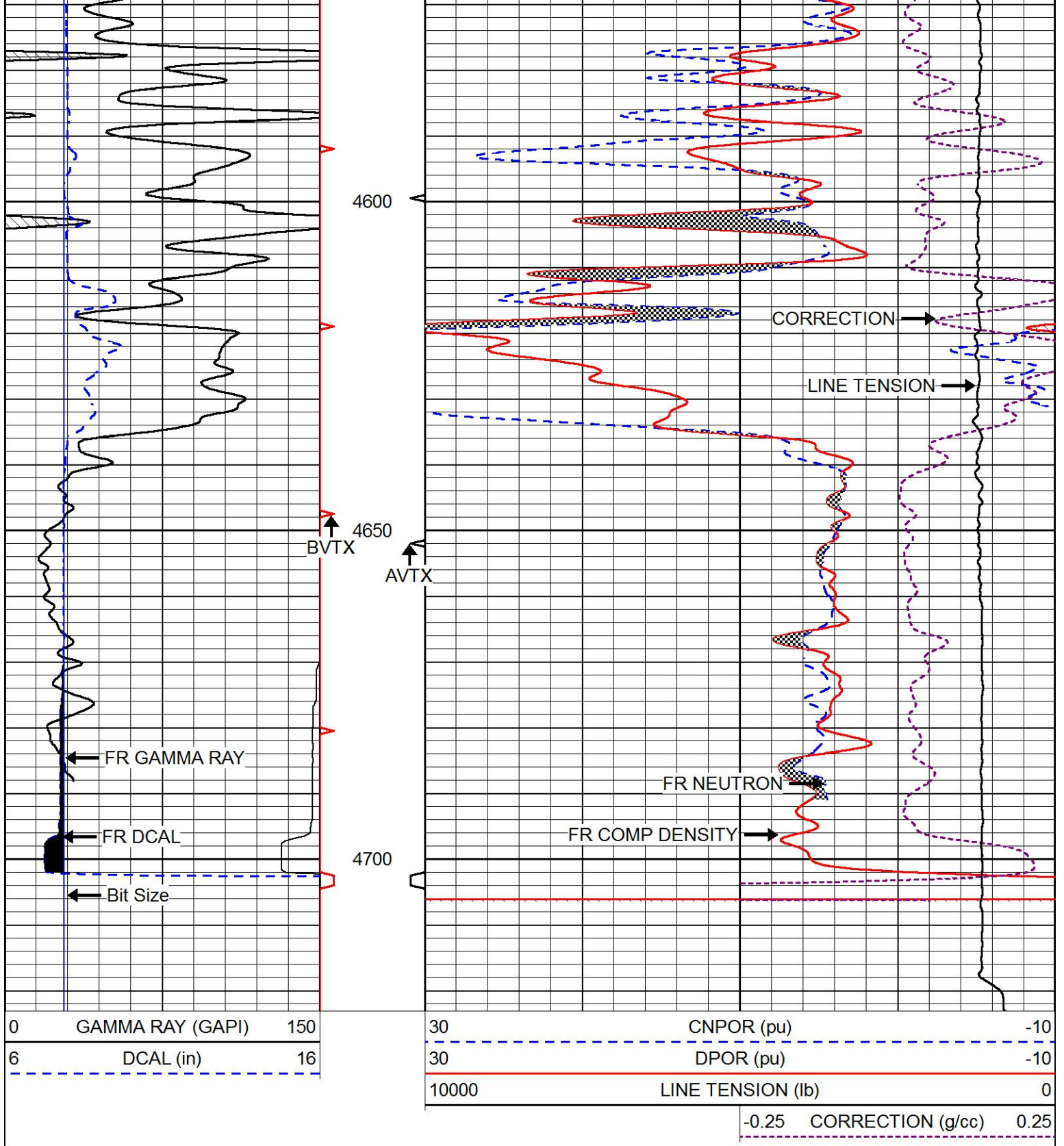
4400

4450

4500

4550





REPEAT SECTION

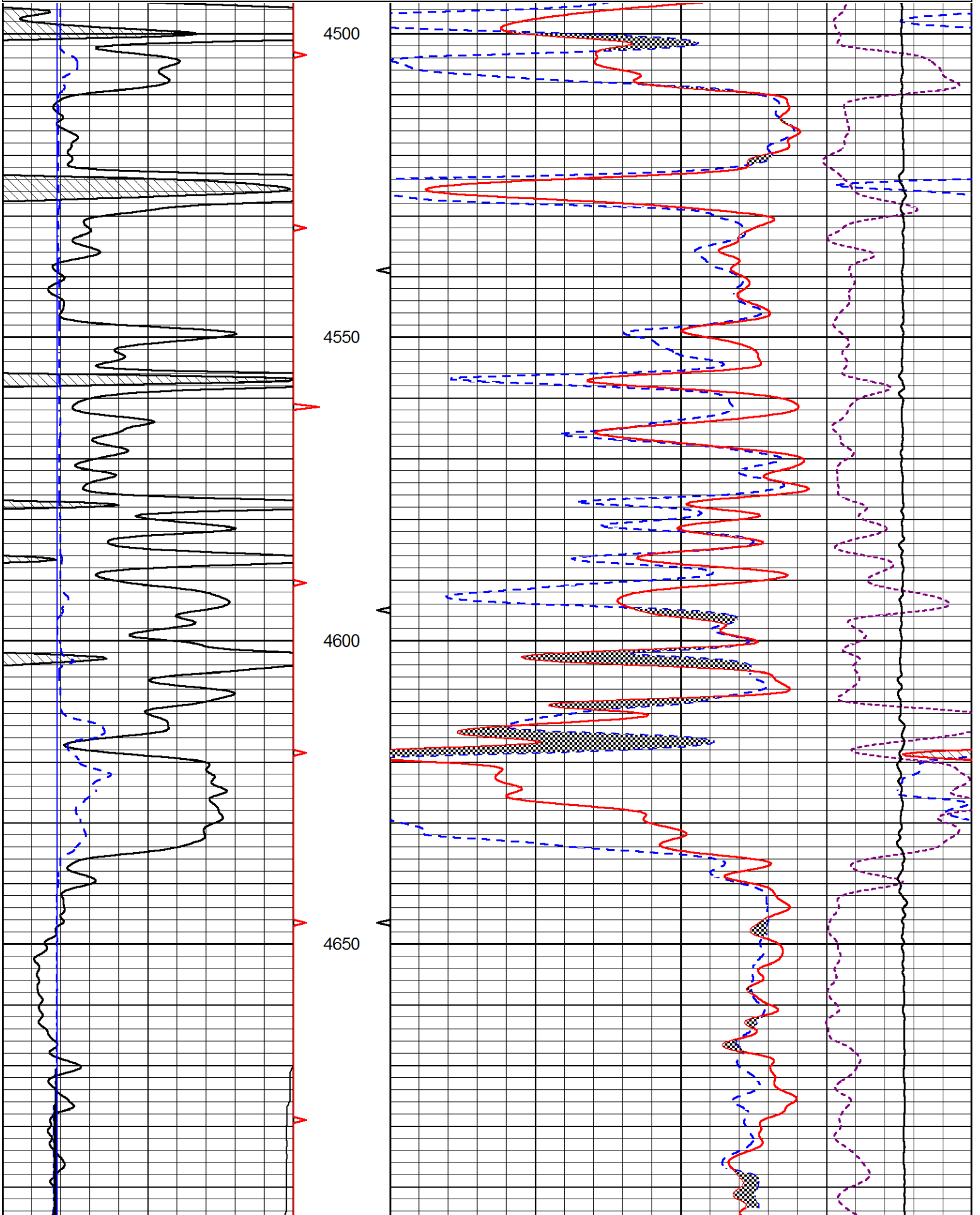
REPEAT PASS

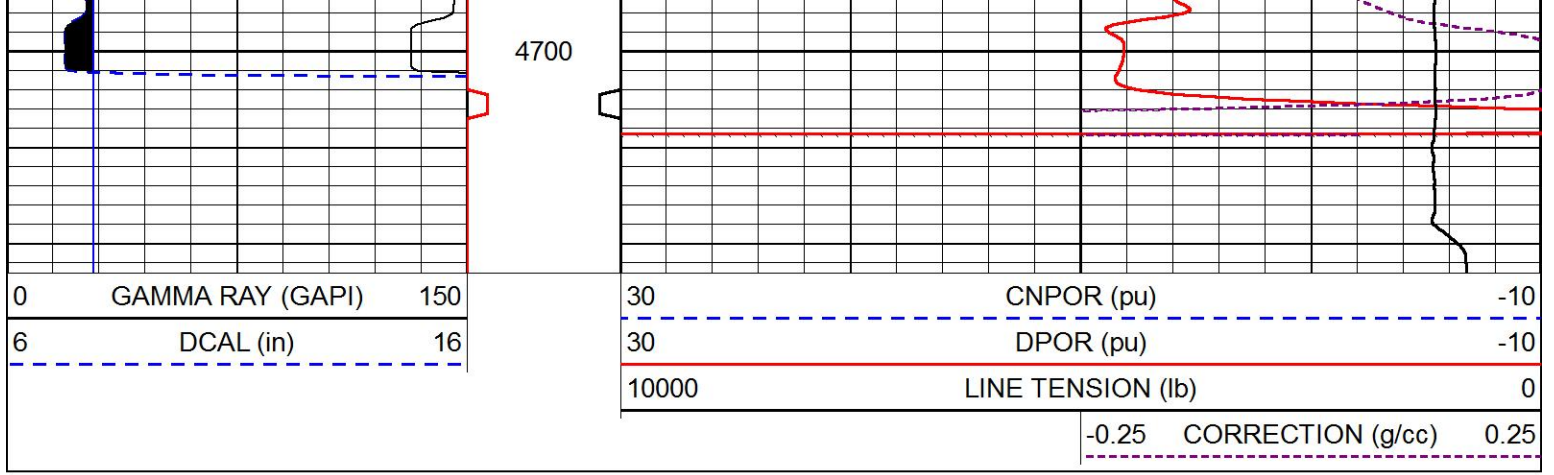
Database File russell_ben wieland #14-1.db
 Dataset Pathname Stack/pass2.1
 Presentation Format _CNDLS~1
 Dataset Creation Thu Jun 17 22:35:34 2021
 Charted by Depth in Feet scaled 1:240

0	GAMMA RAY (GAPI)	150
6	DCAL (in)	16

30	CNPOR (pu)	-10
30	DPOR (pu)	-10
10000	LINE TENSION (lb)	0

-0.25	CORRECTION (g/cc)	0.25
-------	-------------------	------





Company Russell Oil, Inc.
 Well Ben Wieland #14-1
 Field Wildcat
 County Logan
 State Kansas