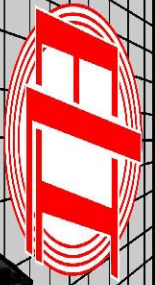


SONIC
LOG



Company DARRAH OIL COMPANY, LLC.
Well YOUNKIN #1-10
Field WILDCAT
County LOGAN State KANSAS

Location: 2355' FSL & 290' FEL
NE - NE - NE - SE
API #: 15-109-21604-0000
SEC 10 TWP 14s RGE 34W
Permanent Datum GROUND LEVEL Elevation 2927
Log Measured From KELLY BUSHING 11" A.G.L.
Drilling Measured From KELLY BUSHING
Other Services
CDL/CNL
DIL/ML
Elevation
K.B. 2938
D.F. 2936
G.L. 2927

Date	6/18/20
Run Number	TWO
Depth Driller	4675
Depth Logger	4672
Bottom Logged Interval	4664
Top Log Interval	200
Casing Driller	8 5/8"@263'
Casing Logger	263
Bit Size	7 7/8"
Type Fluid in Hole	CHEMICAL MUD
Density / Viscosity	9.3/54
pH / Fluid Loss	9.5/7.5
Source of Sample	FLOWLINE
Rm @ Meas. Temp	.590@85F
Rmf @ Meas. Temp	.443@85F
Rmc @ Meas. Temp	.708@85F
Source of Rmf / Rmc	MEASUREMENT
Rm @ BHT	.411@122F
Time Circulation Stopped	4:5 HOURS
Time Logger on Bottom	6:00 P.M.
Maximum Recorded Temperature	122F
Equipment Number	922339
Location	HAYS, KANSAS
Recorded By	JEFF LUEBBERS
Witnessed By	SETH EVENSON

<<< Fold Here >>>

All interpretations are opinions based on inferences from electrical or other measurements and we cannot and do not guarantee the accuracy or correctness of any interpretation, and we shall not, except in the case of gross or willful negligence on our part, be liable or responsible for any loss, costs, damages, or expenses incurred or sustained by anyone resulting from any interpretation made by any of our officers, agents or employees. These interpretations are also subject to our general terms and conditions set out in our current Price Schedule.

Comments

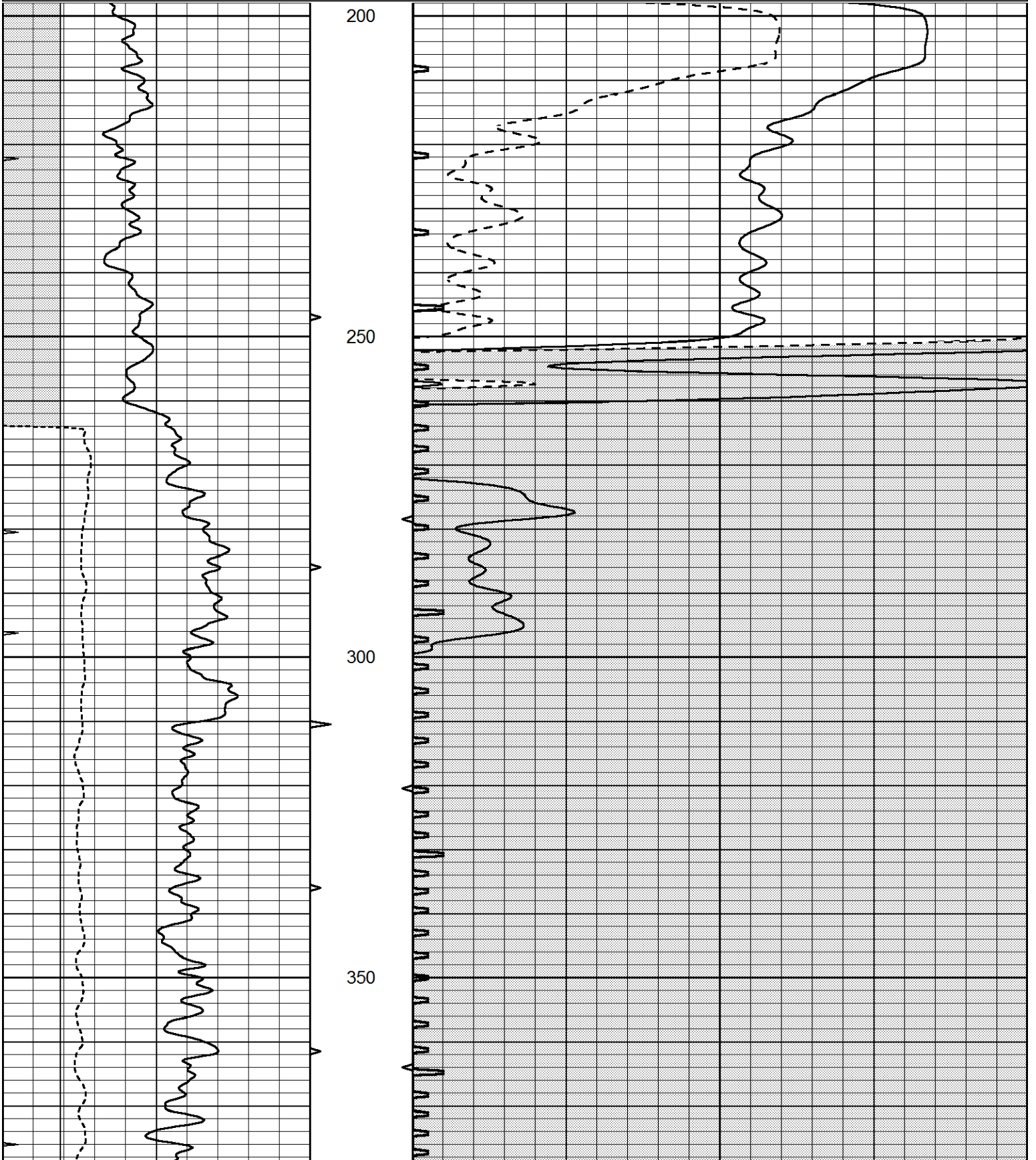
THANK YOU FOR USING E.L.I. WIRELINE SERVICES HAYS, KANSAS (785)628-6395
DIRECTIONS
OAKLEY, KS., 13S. ON HWY 83 TO "QUAIL RD.", 7W. TO "RD. 370" 1S. TO "PLAINS RD.", 2W. TO "RD. 350", 4S. TO "LARIAT RD.", 1W. TO CATTLE GUARD, 1W. IN PASTURE THEN TAKE LEFT FORK

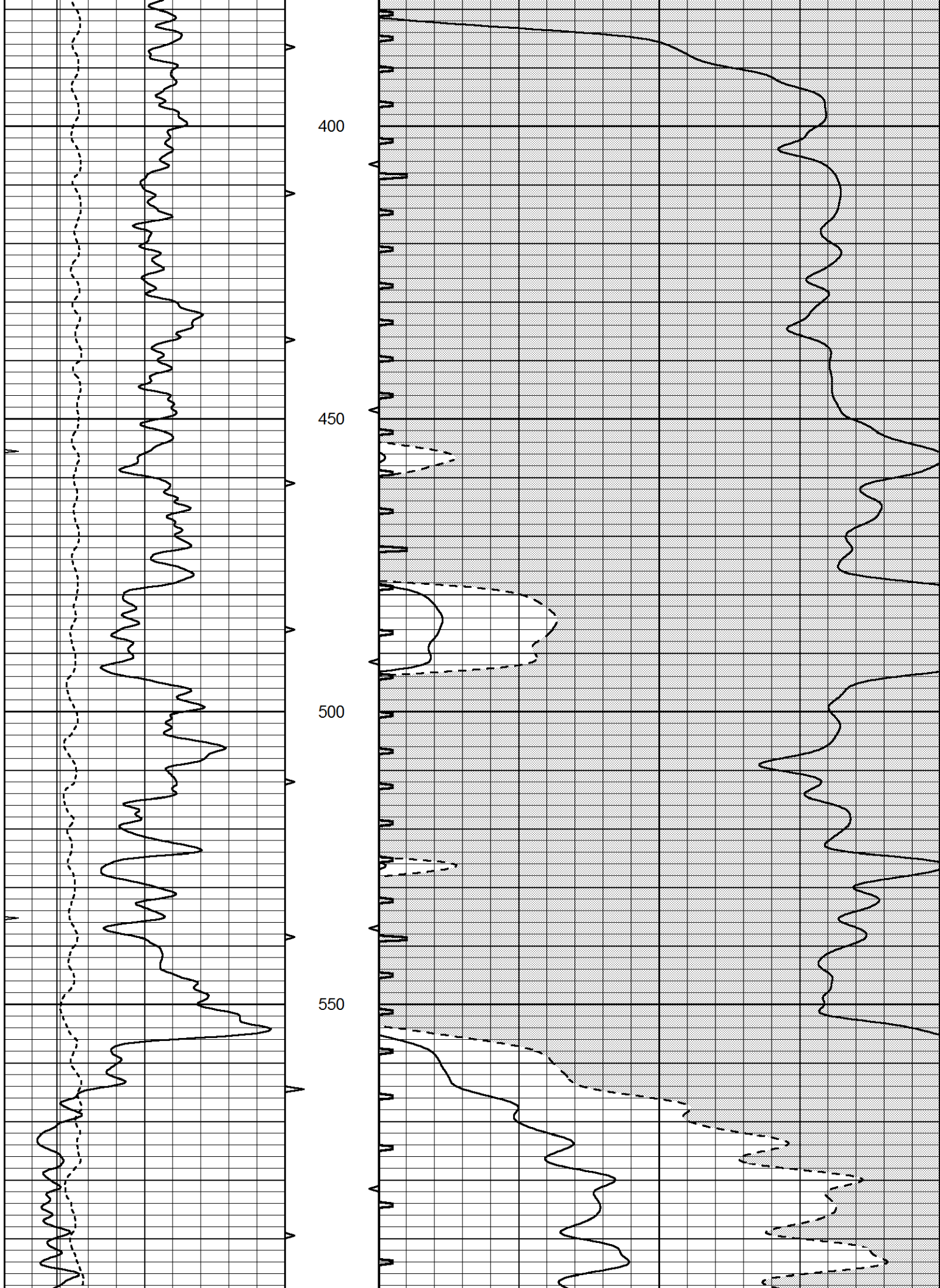


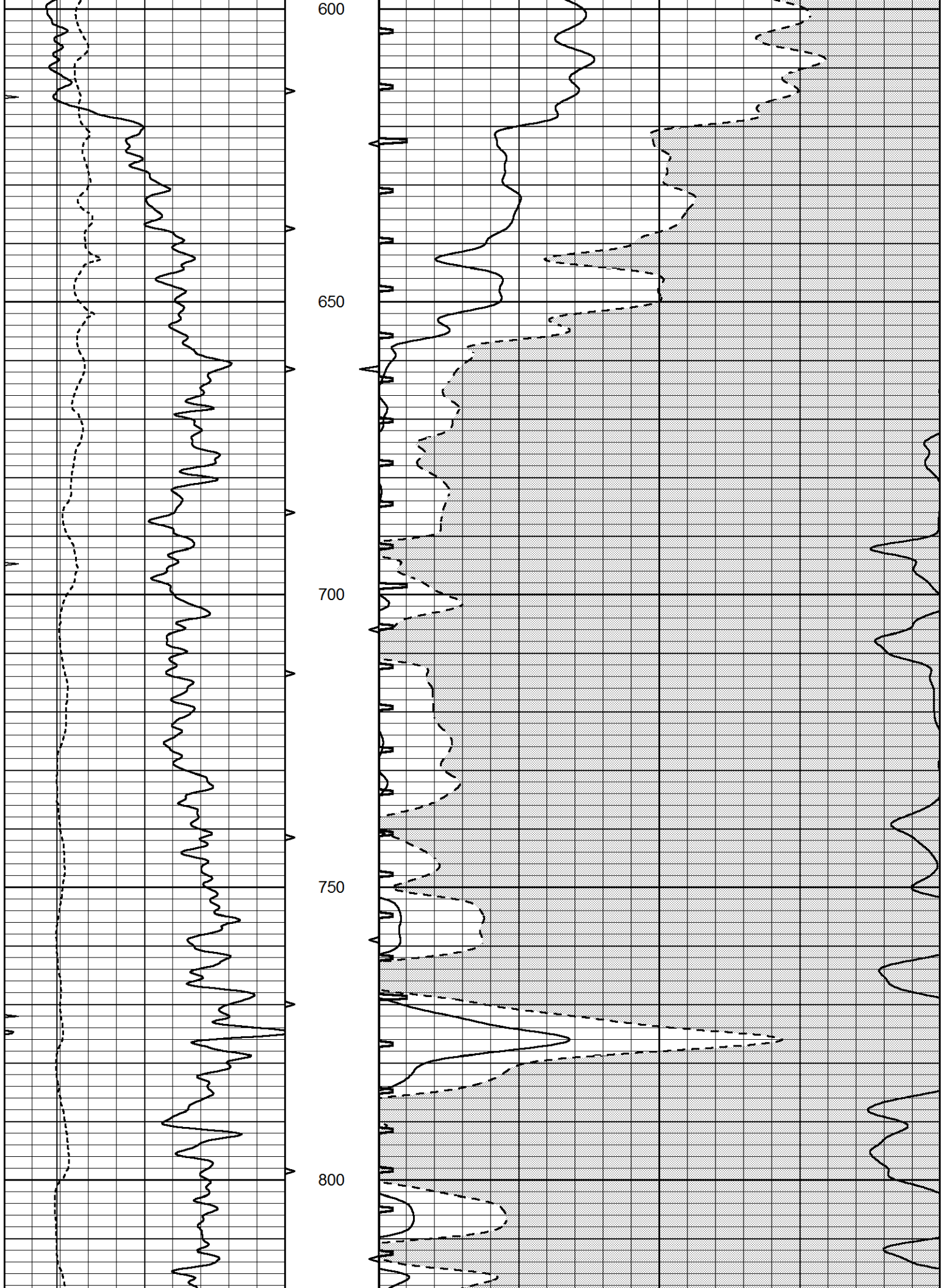
MAIN SECTION

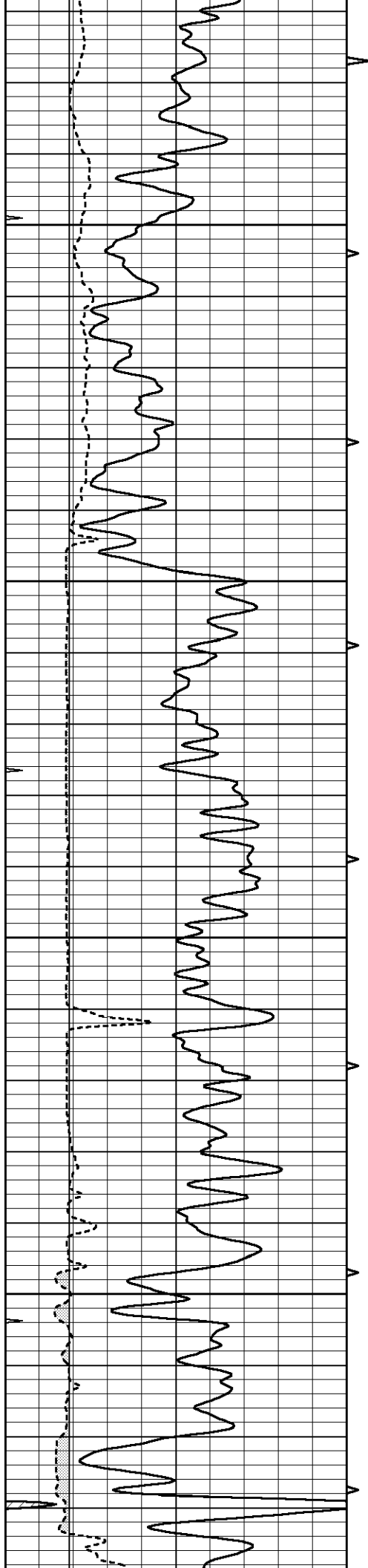
Database File 4546pe.db
 Dataset Pathname pass8.2
 Presentation Format slt
 Dataset Creation Thu Jun 18 19:30:43 2020
 Charted by Depth in Feet scaled 1:240

0	GAMMA RAY (GAPI)	150	ABHV	140	DELTA TIME (usec/ft)	40	
6	CALIPER (in)	16	10 (ft3)	0	30	SONIC POROSITY (pu)	-10
0	MINMK	20	TBHV	0	ITT (msec)	20	
			0 (ft3)	10			







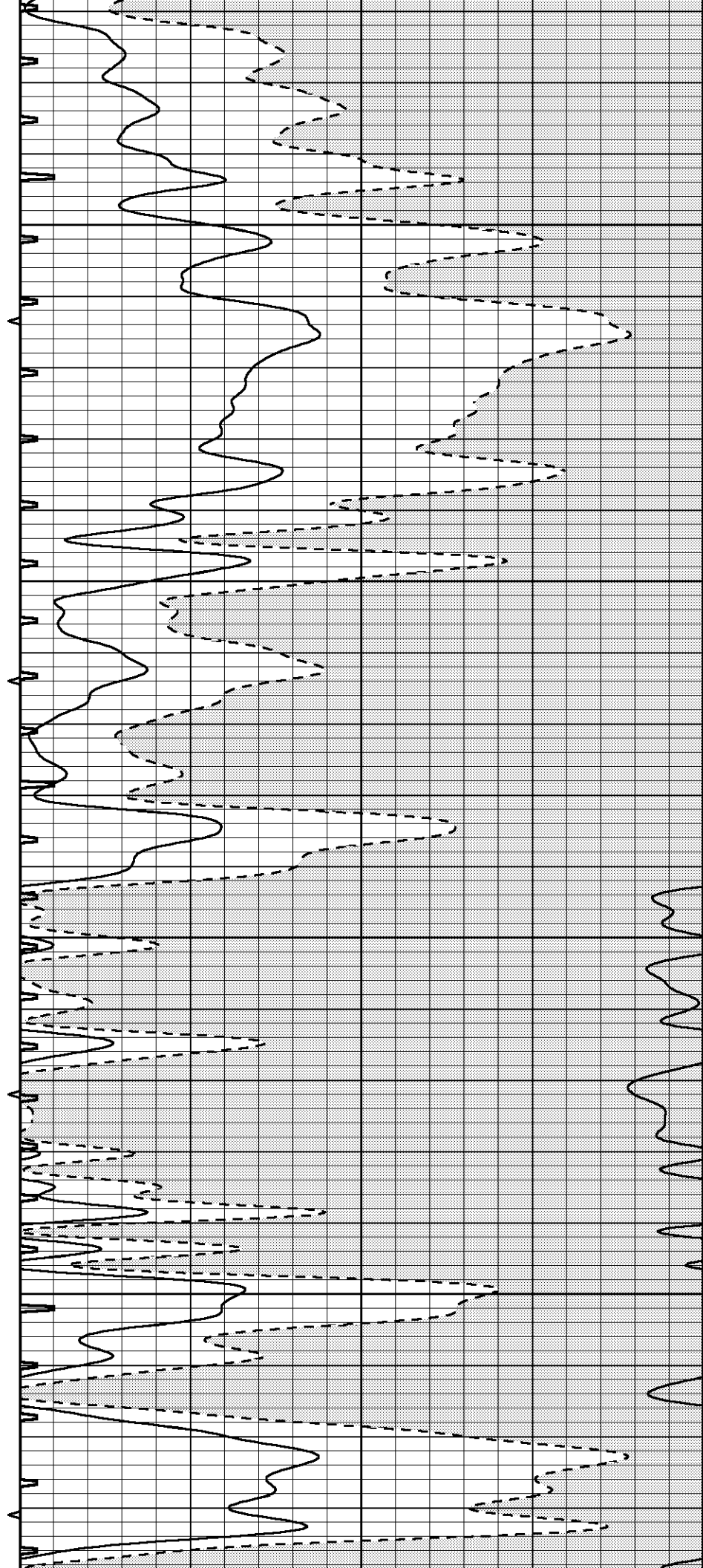


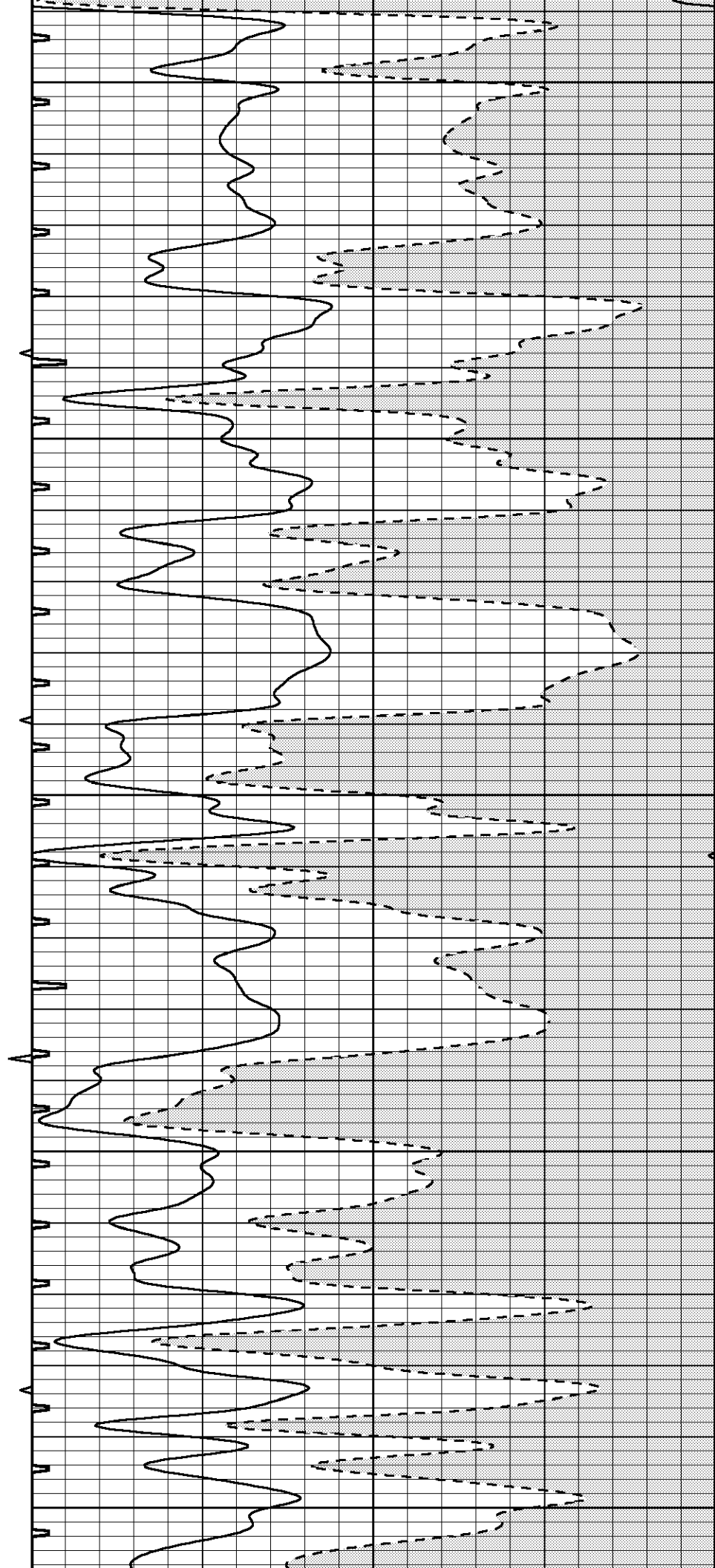
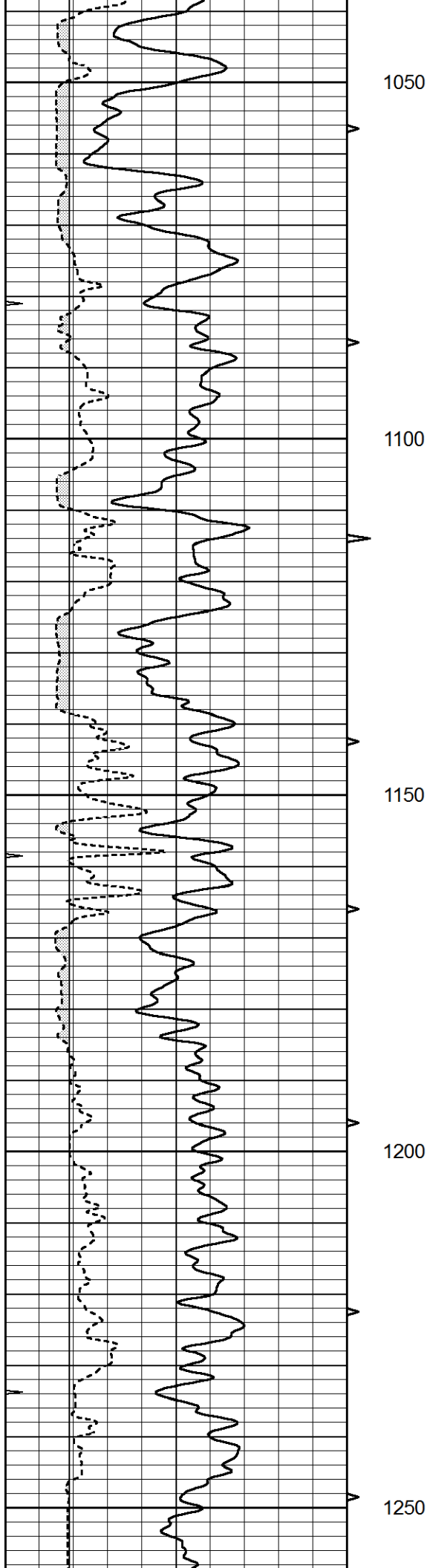
850

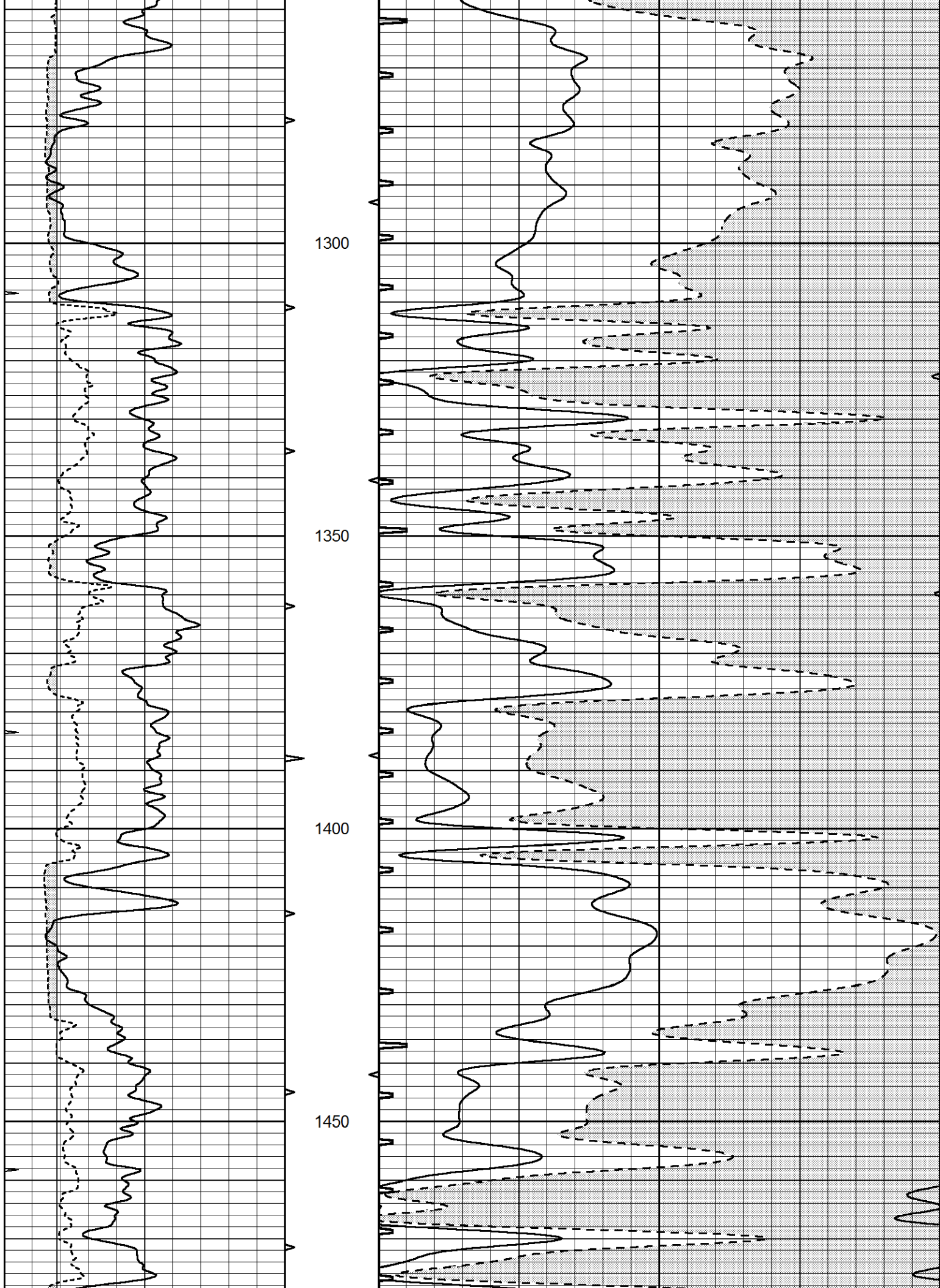
900

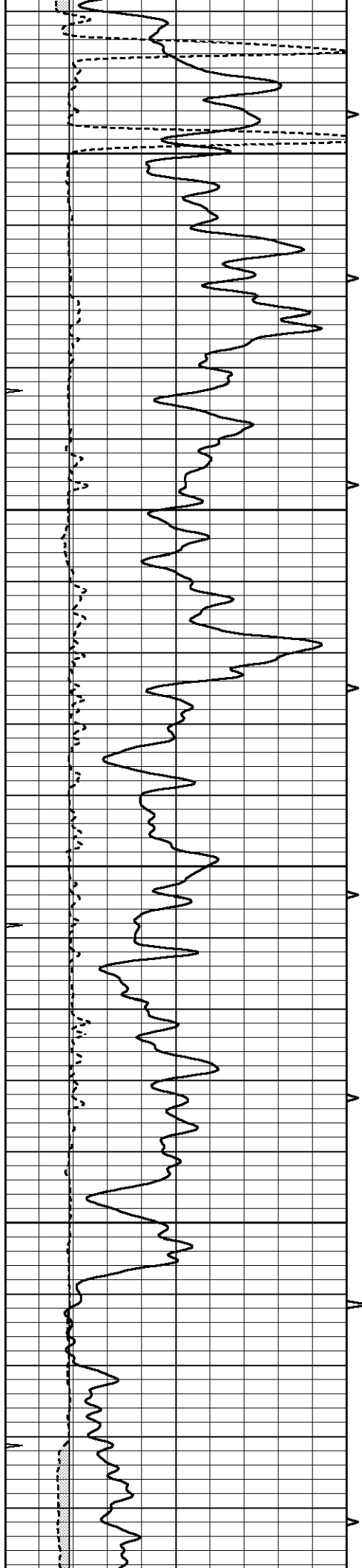
950

1000







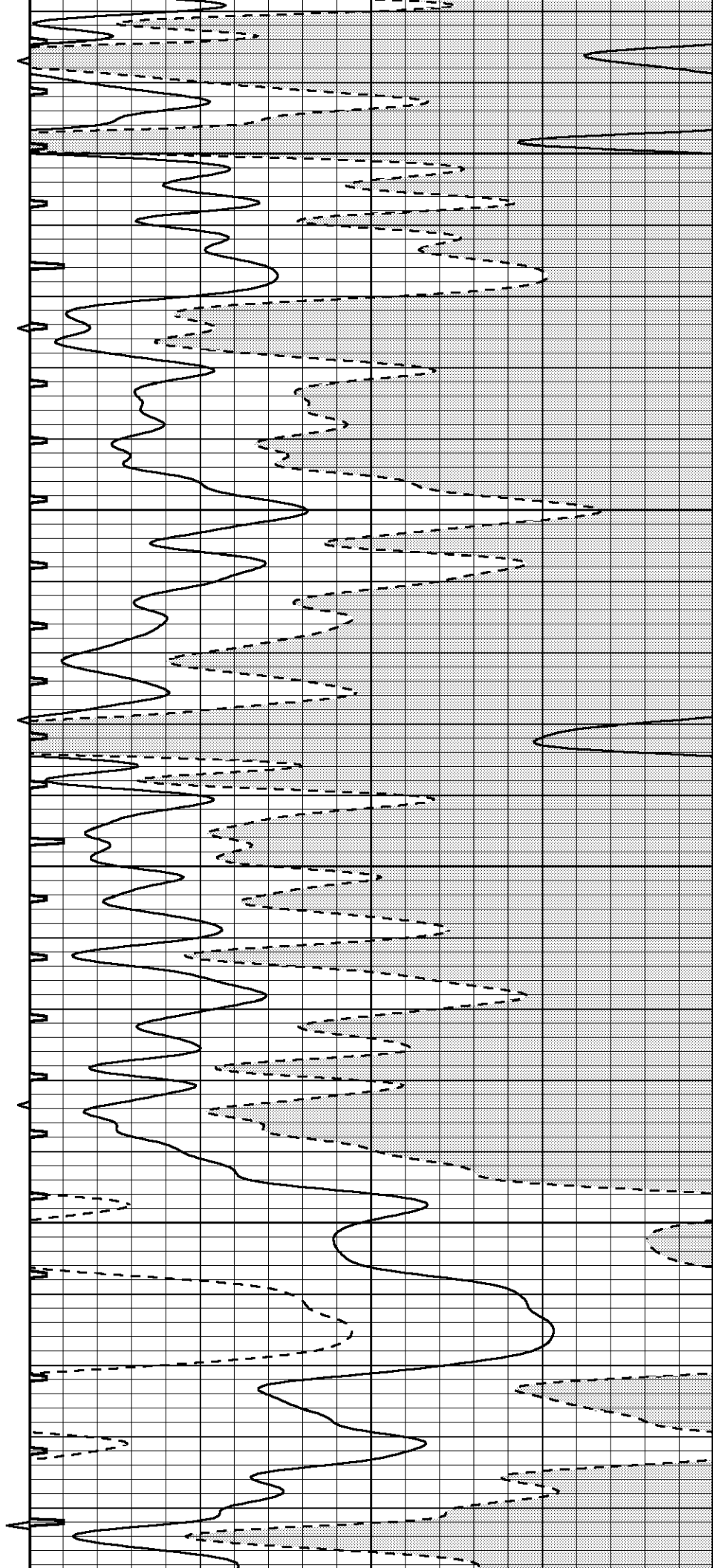


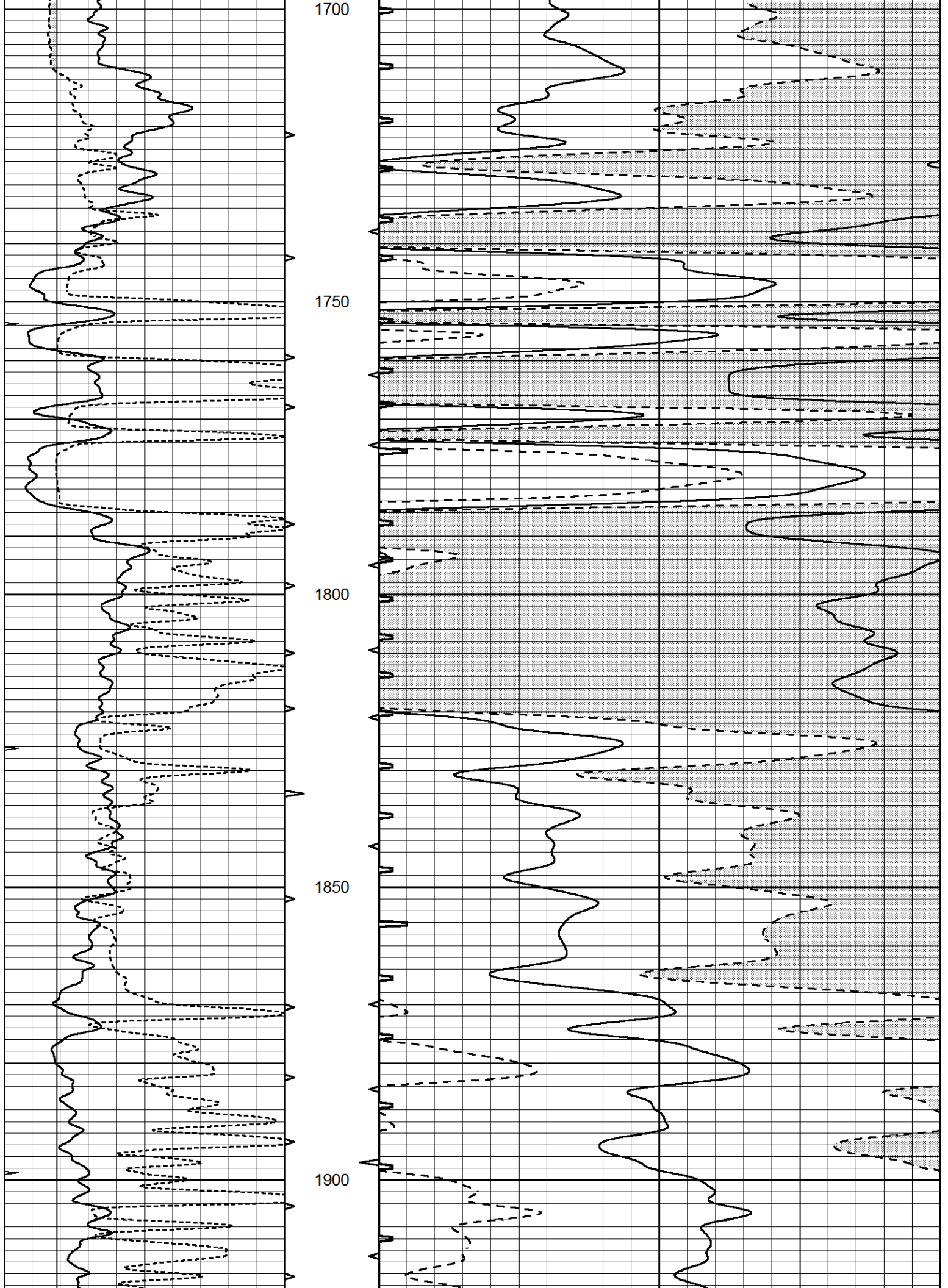
1500

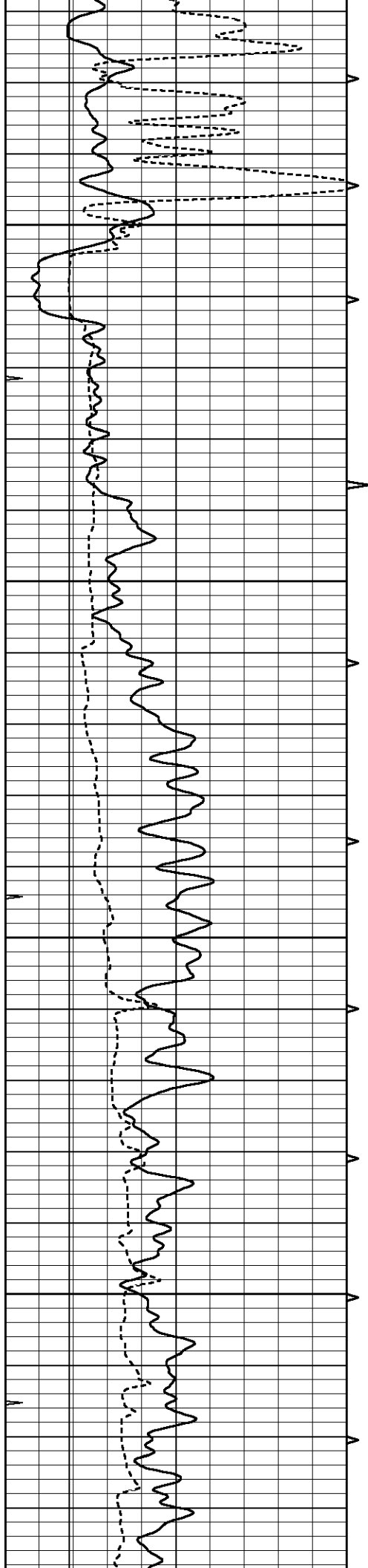
1550

1600

1650





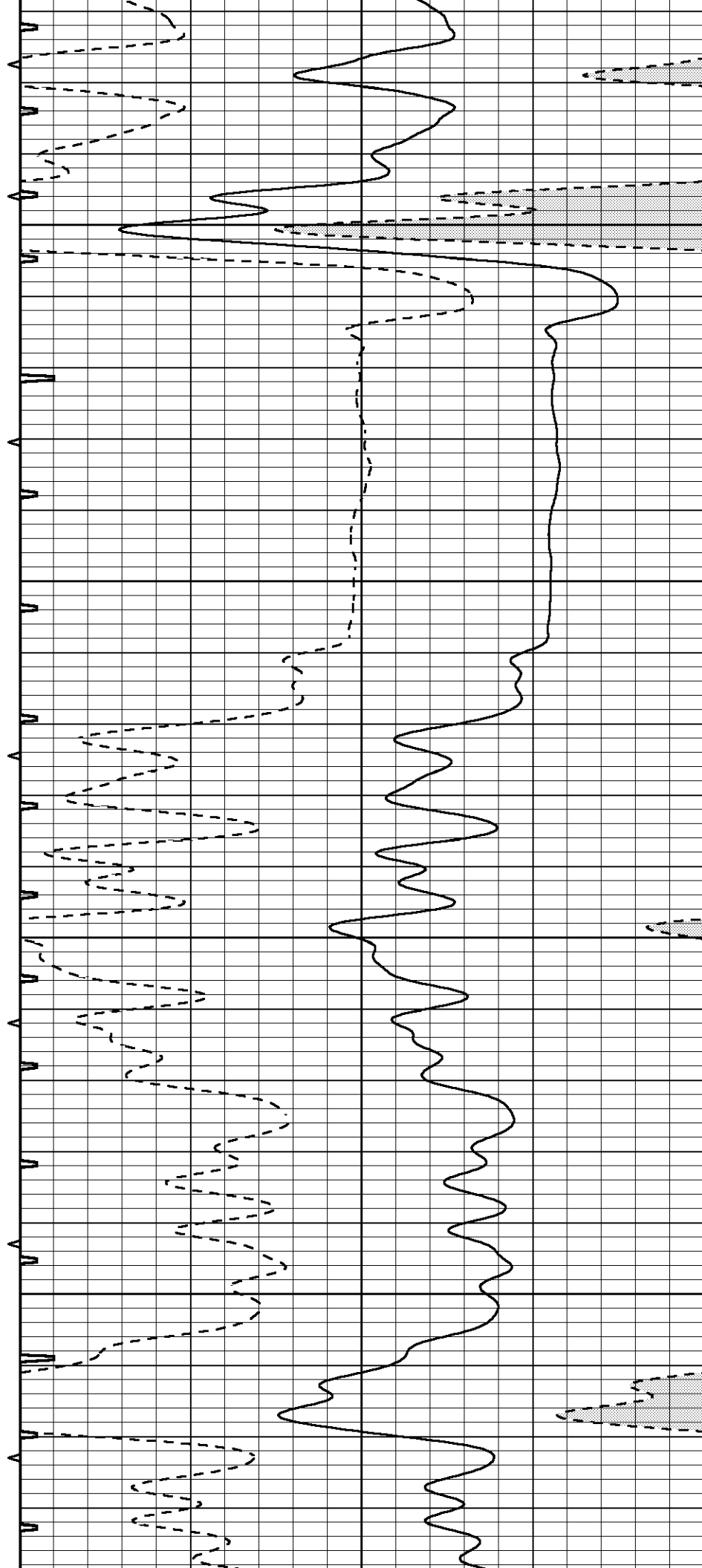


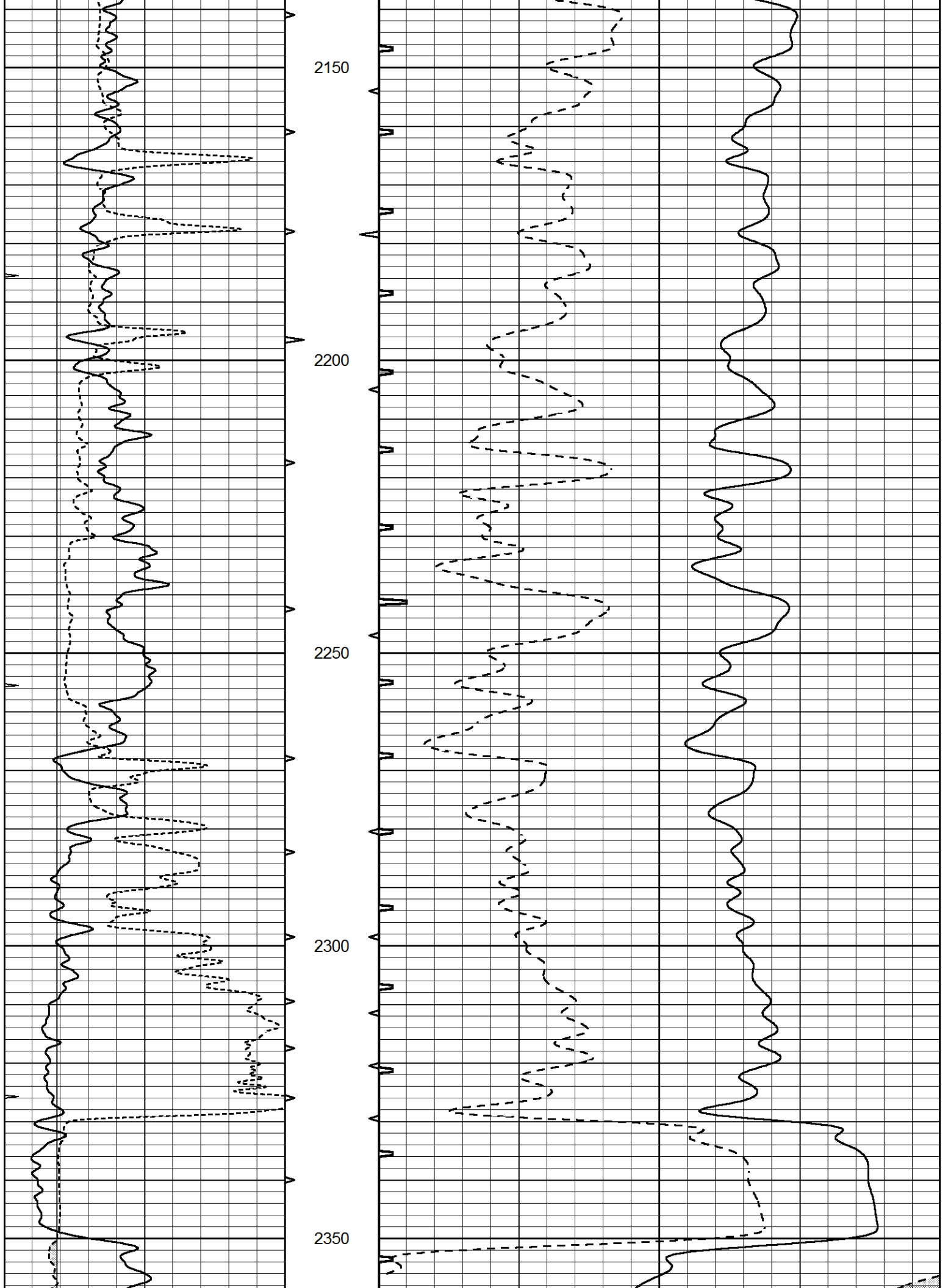
1950

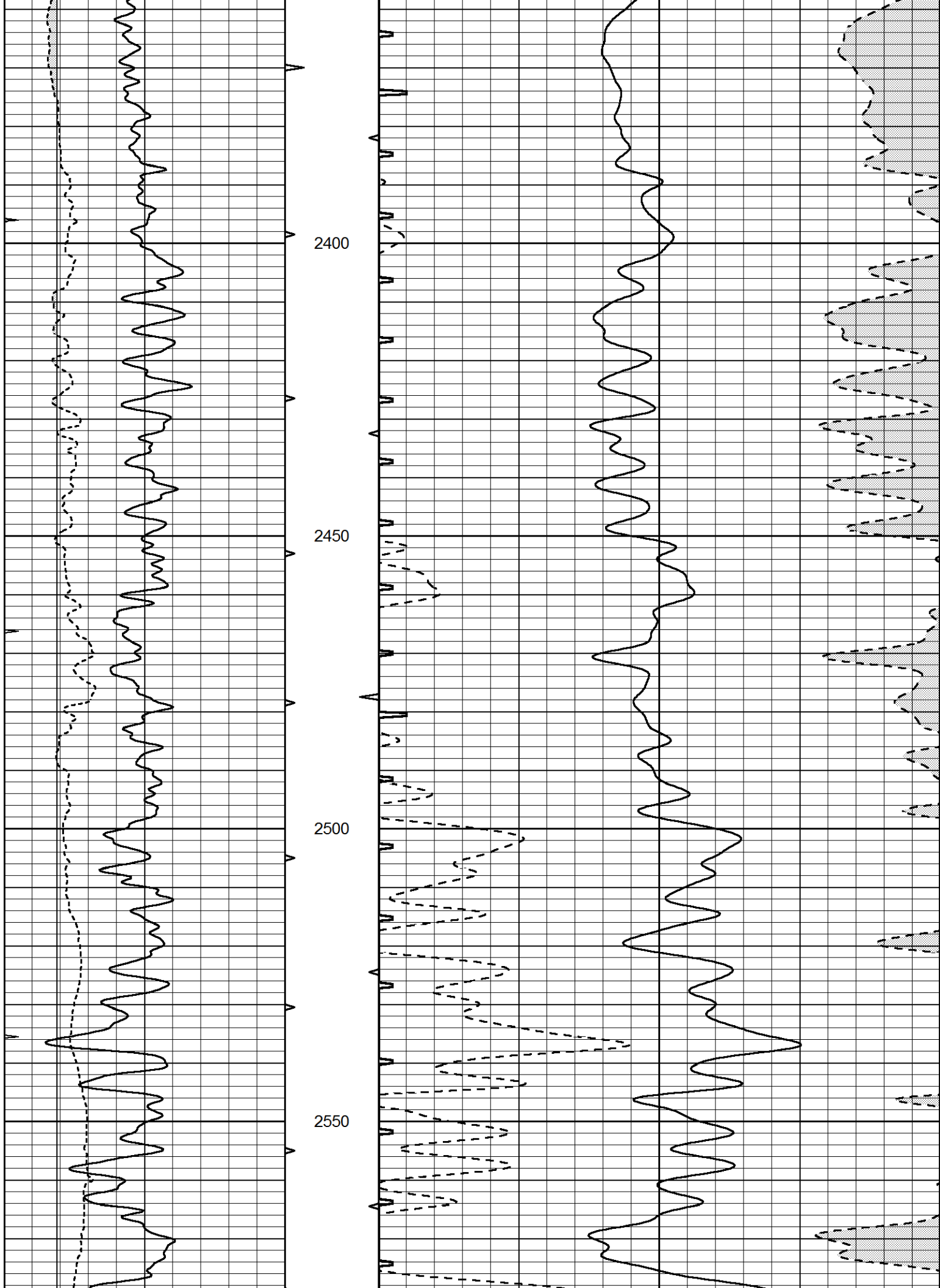
2000

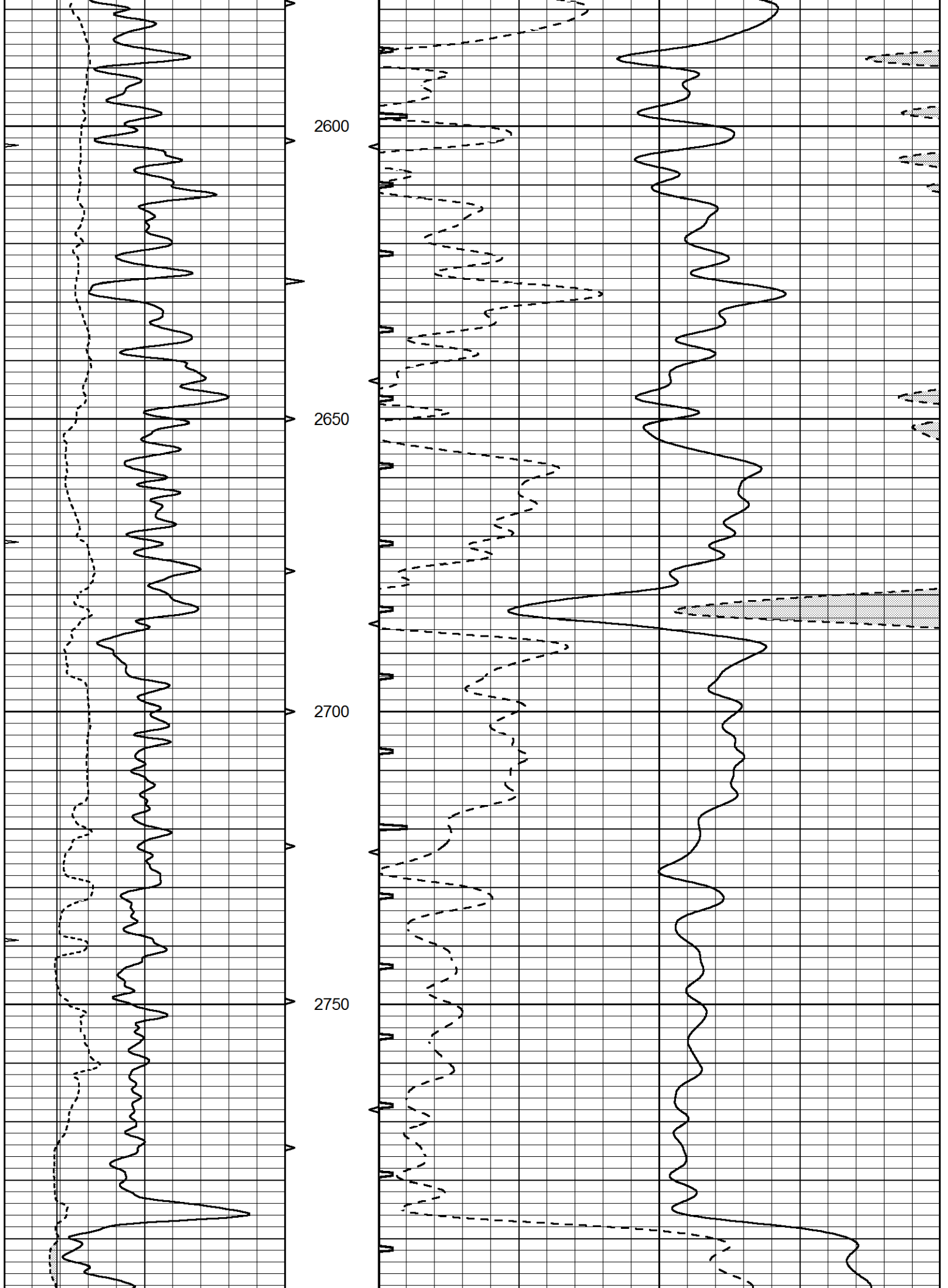
2050

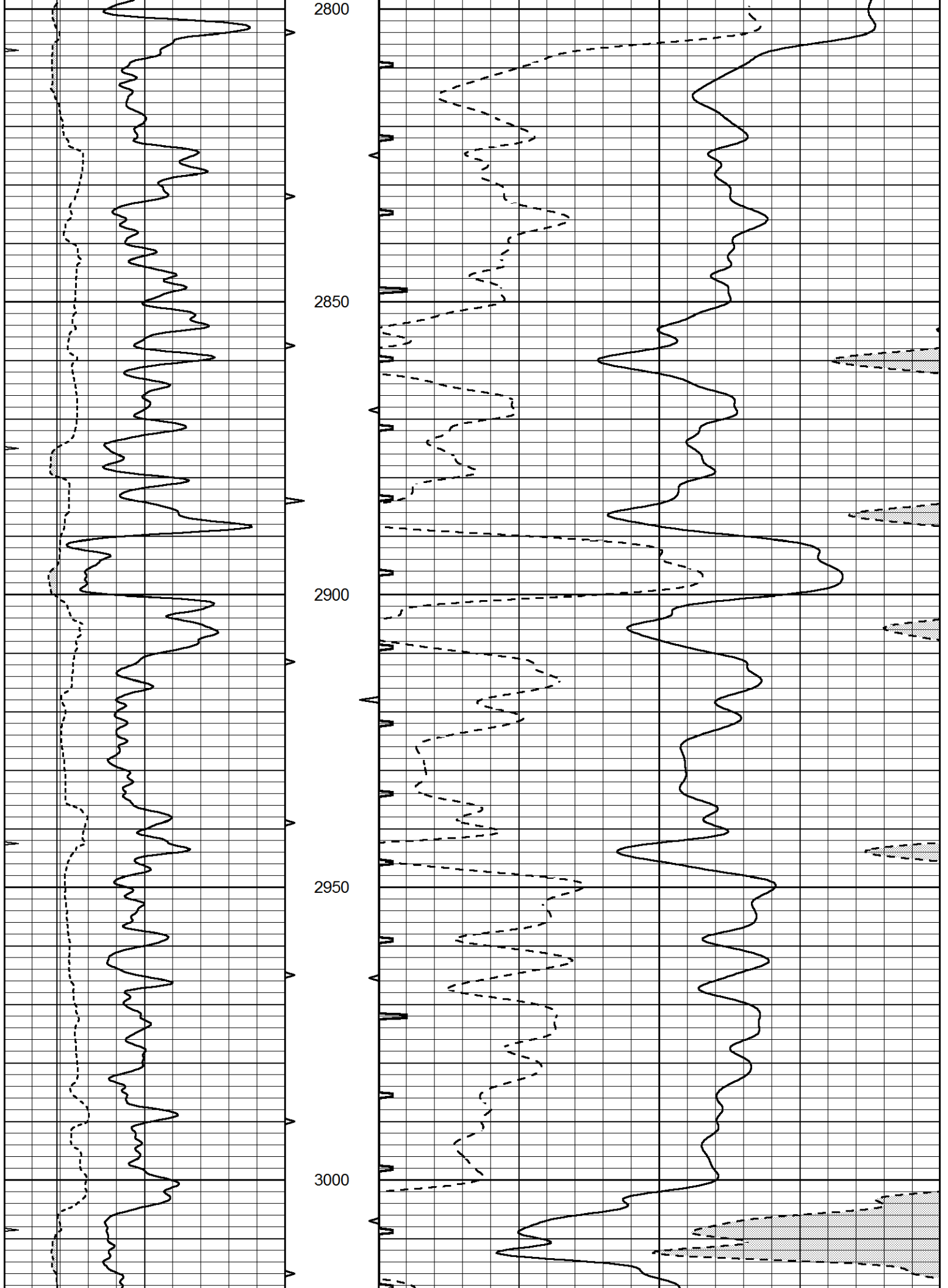
2100

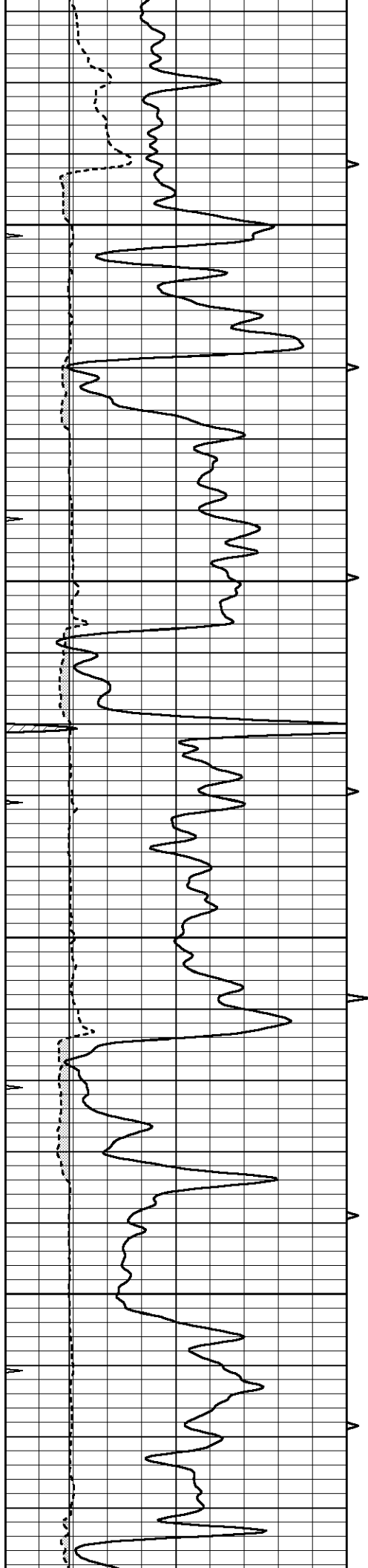










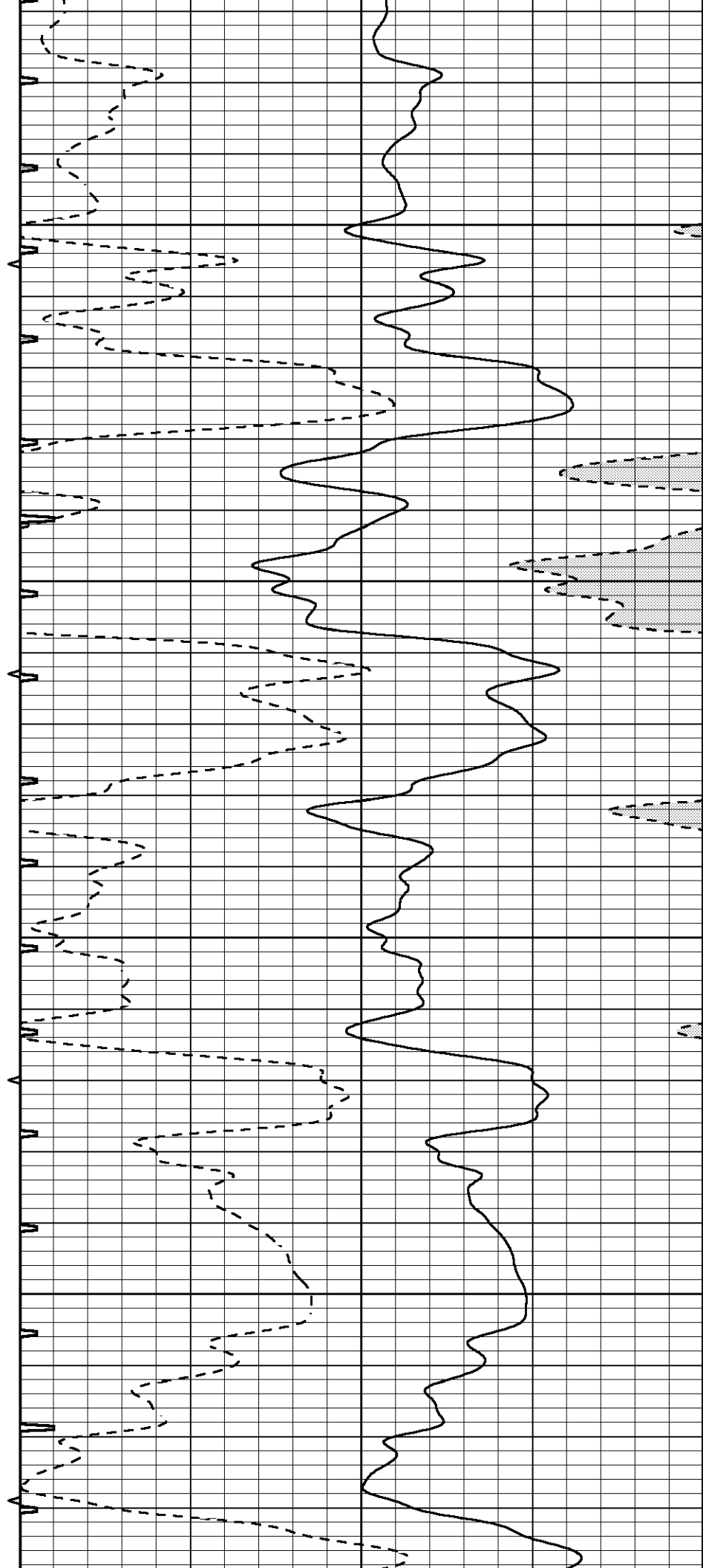


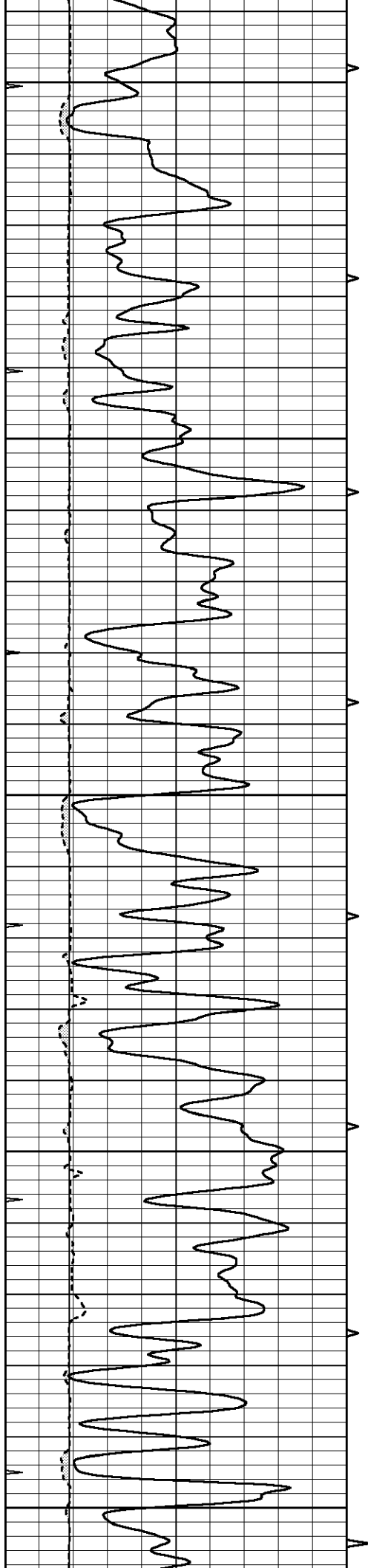
3050

3100

3150

3200





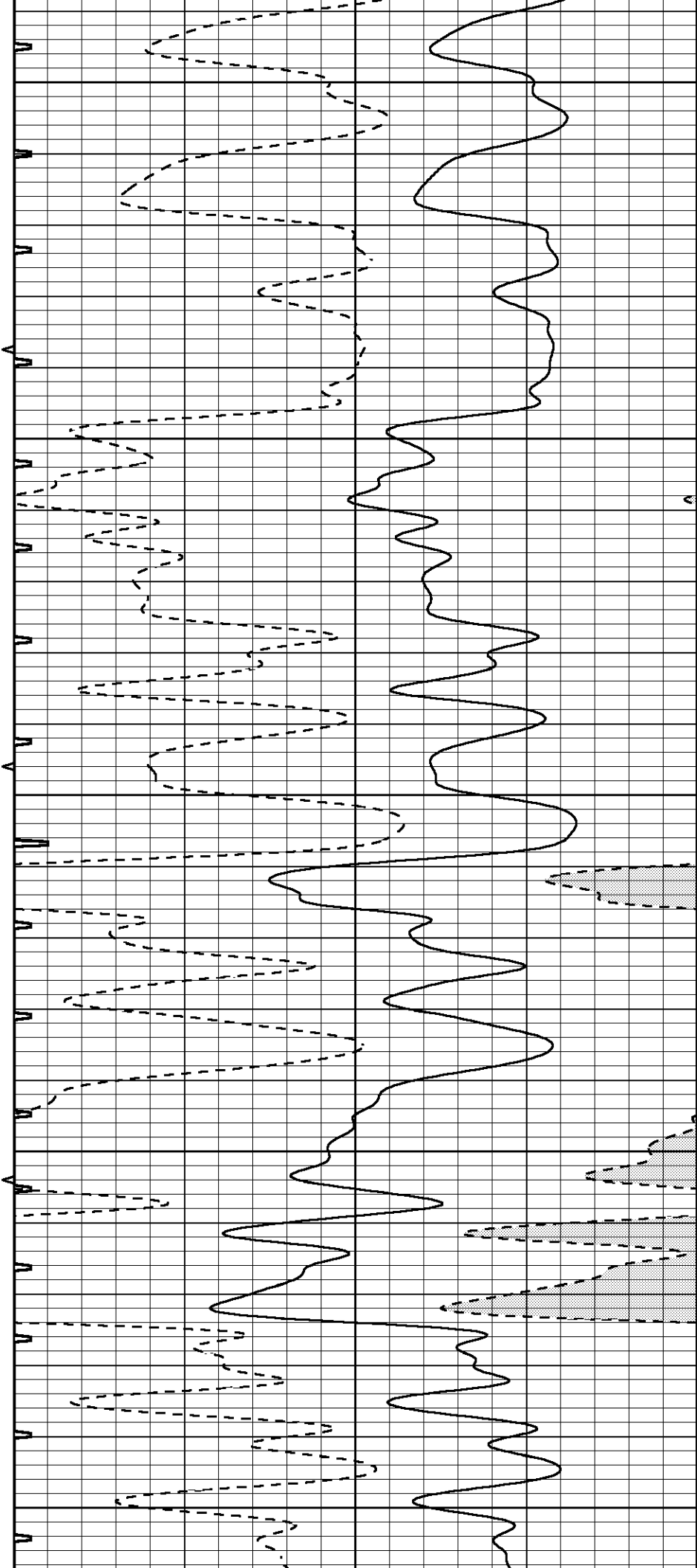
3250

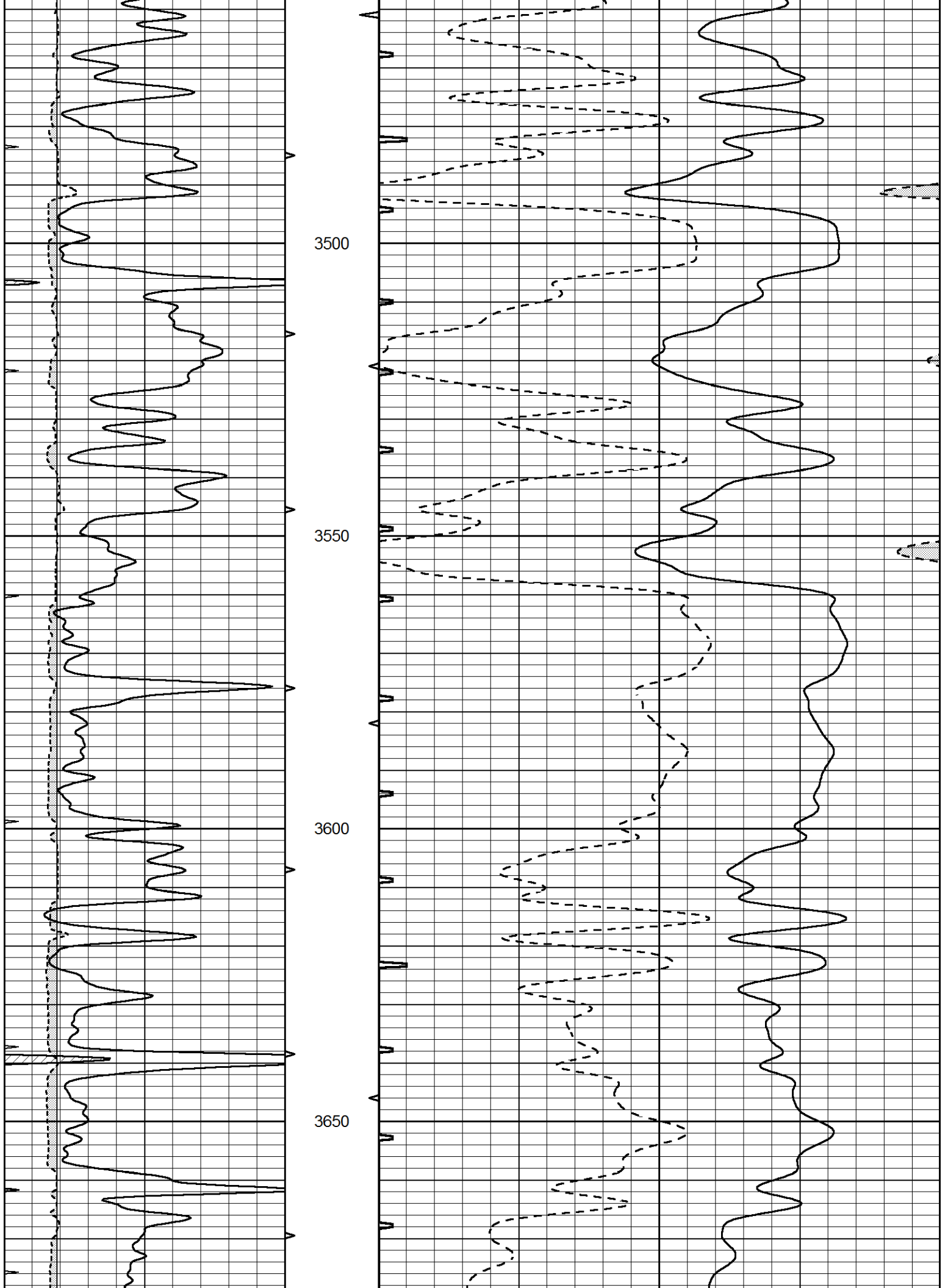
3300

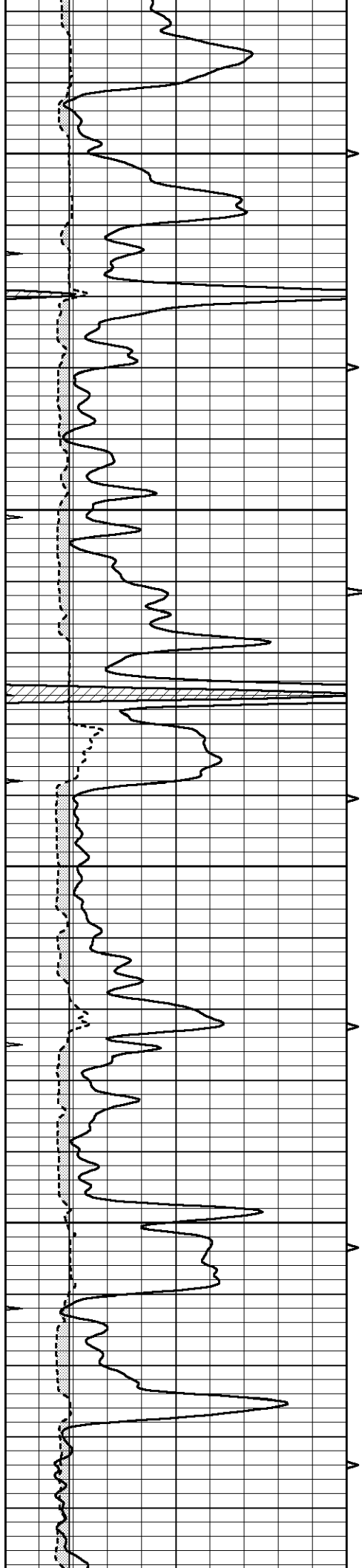
3350

3400

3450





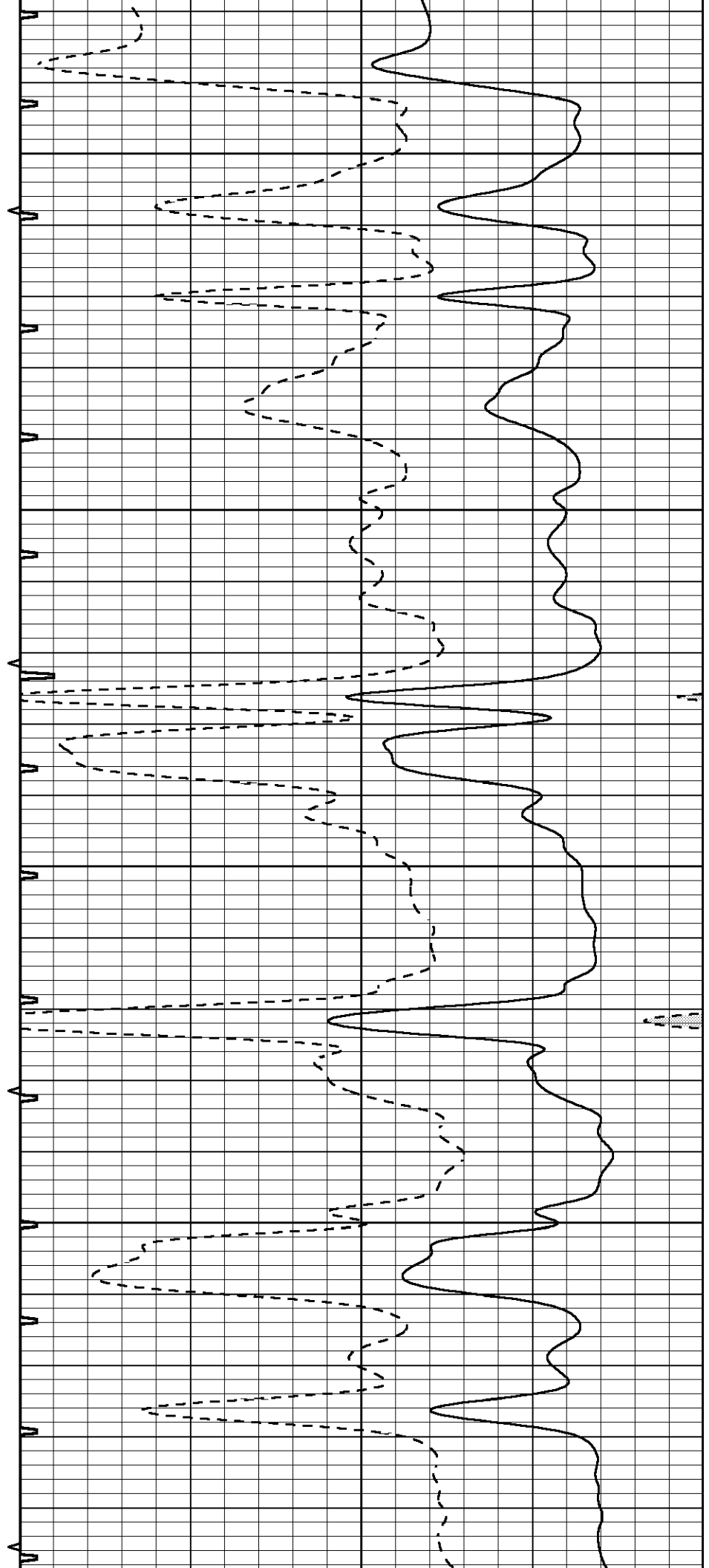


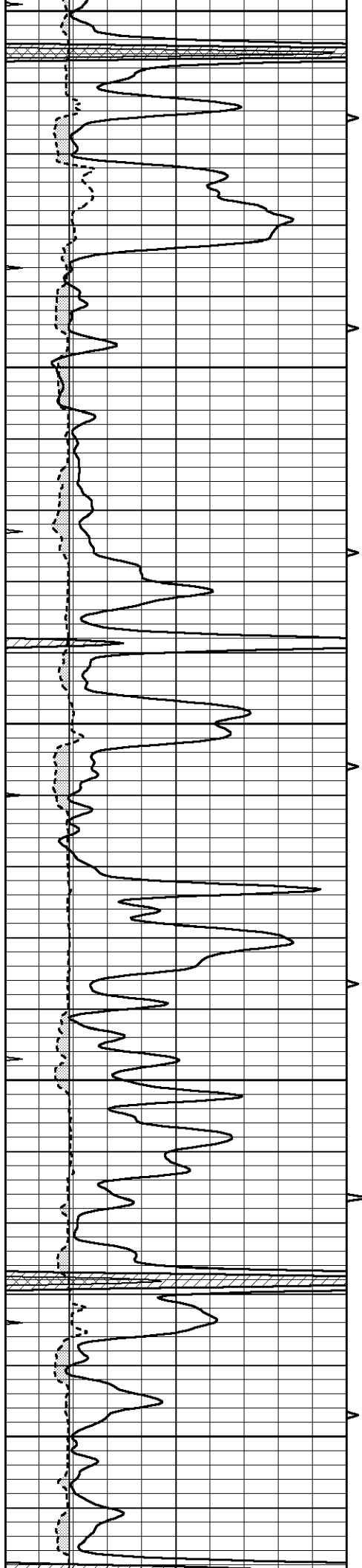
3700

3750

3800

3850





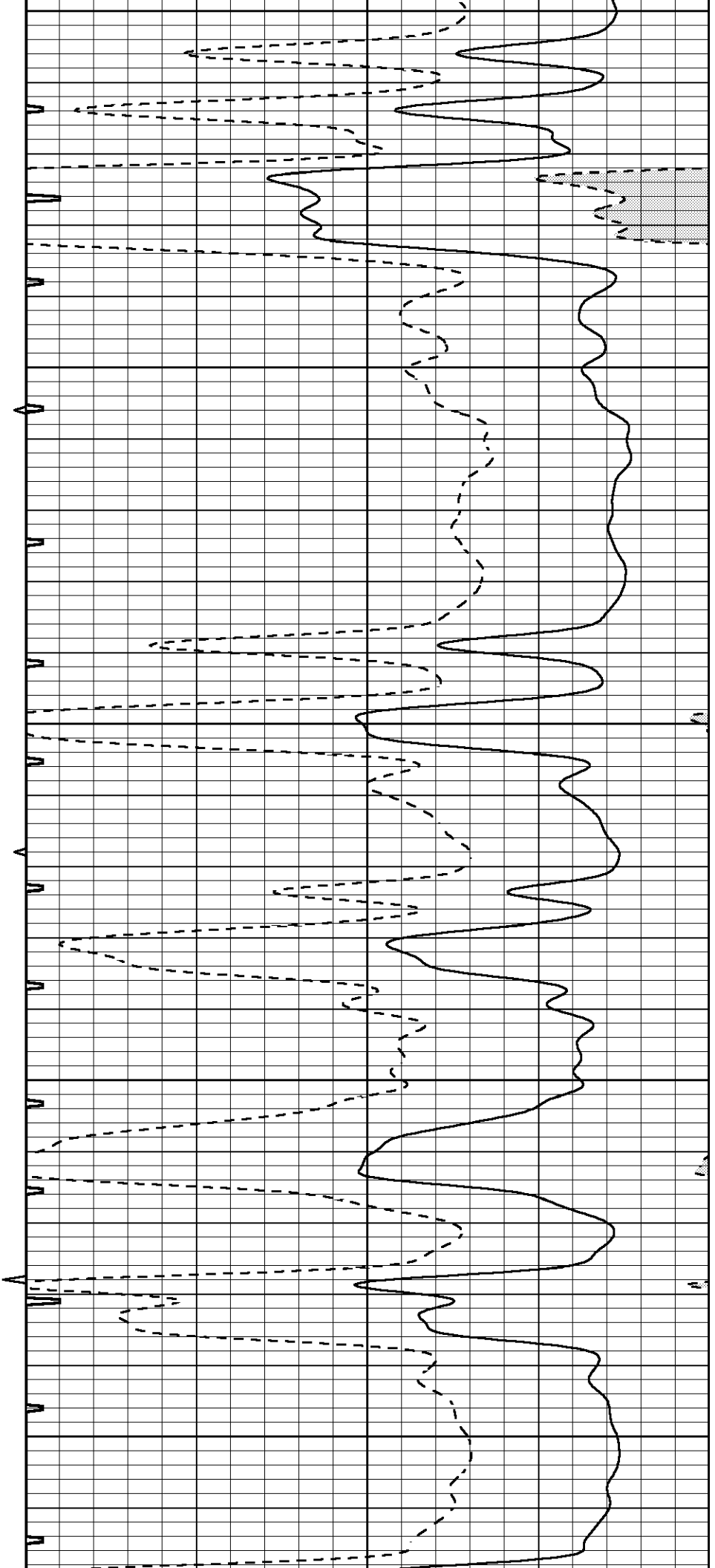
3900

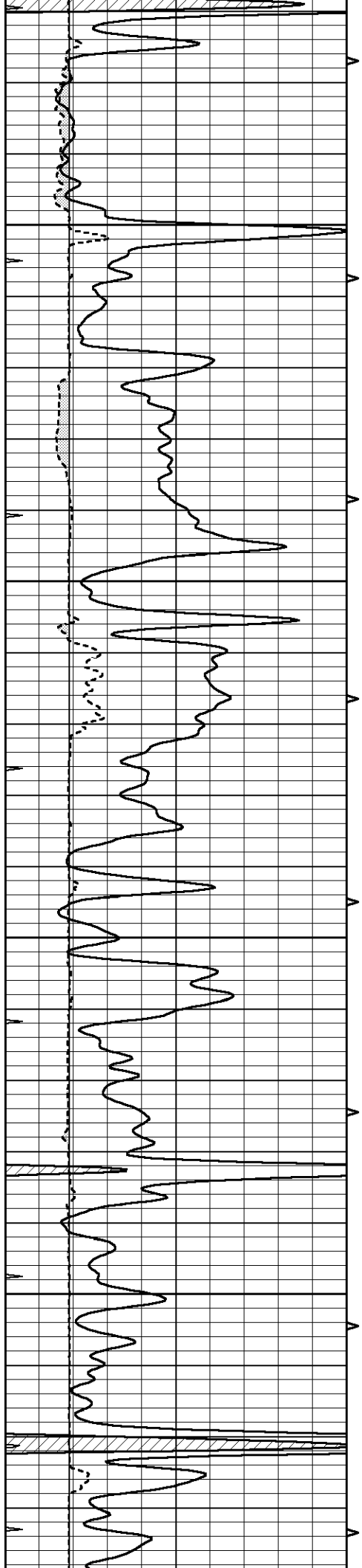
3950

4000

4050

4100



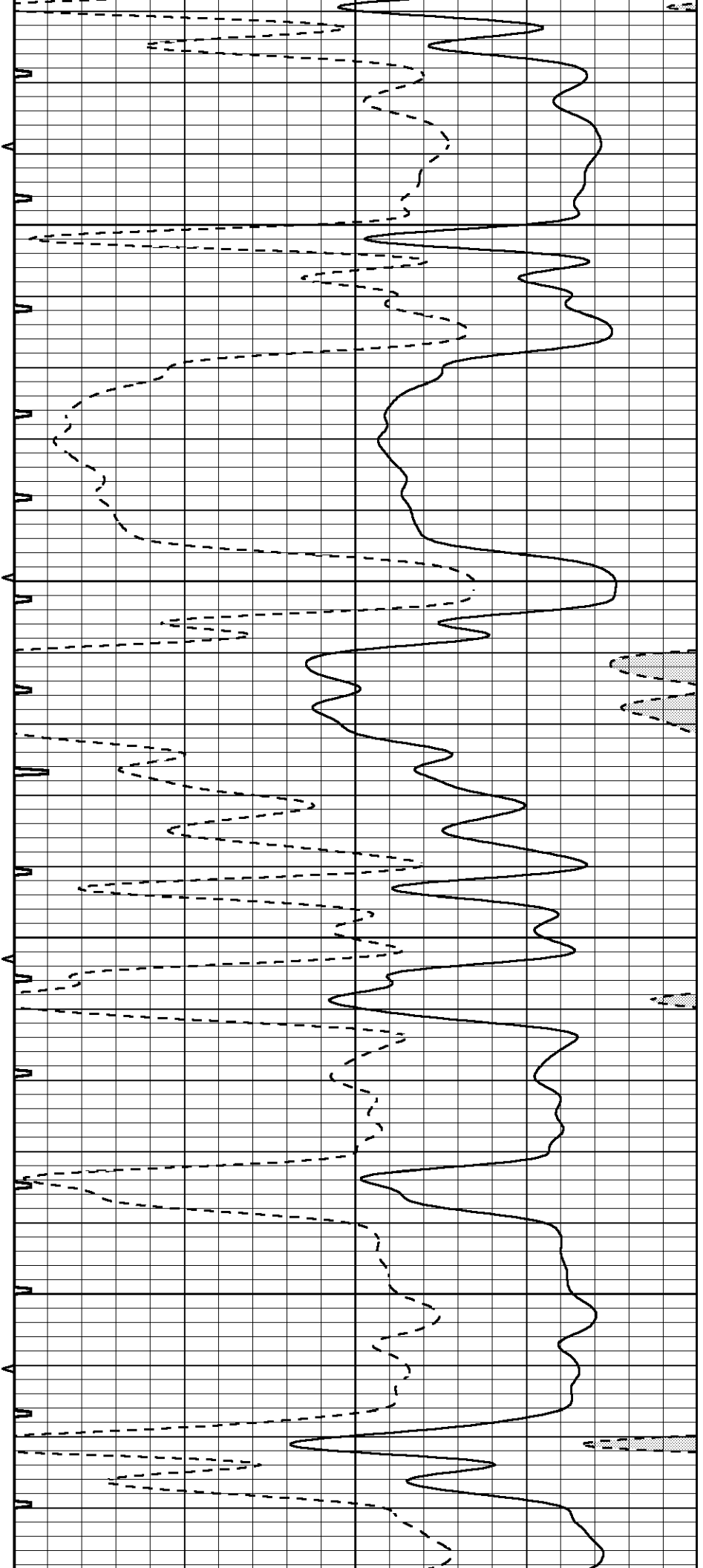


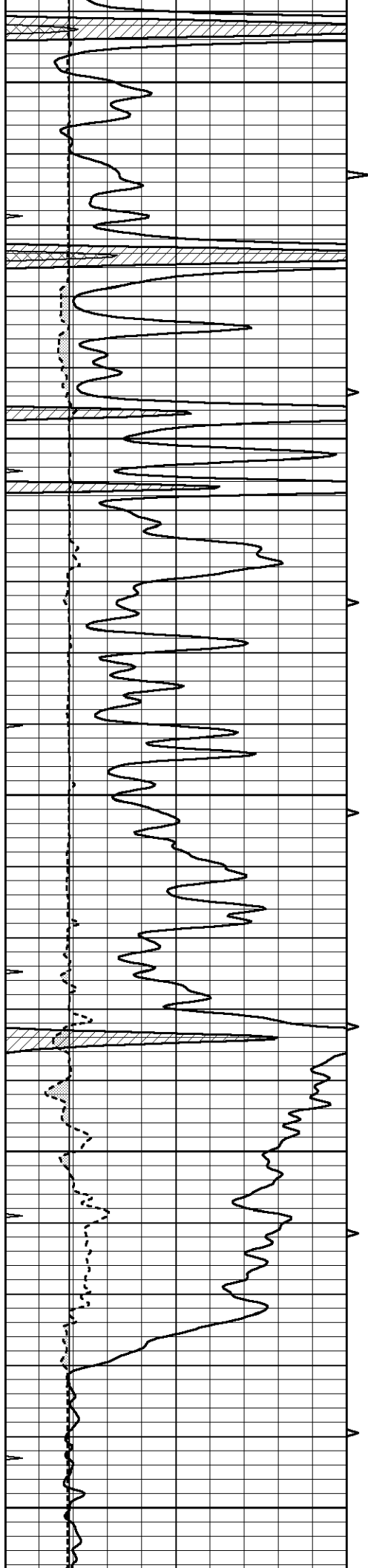
4150

4200

4250

4300





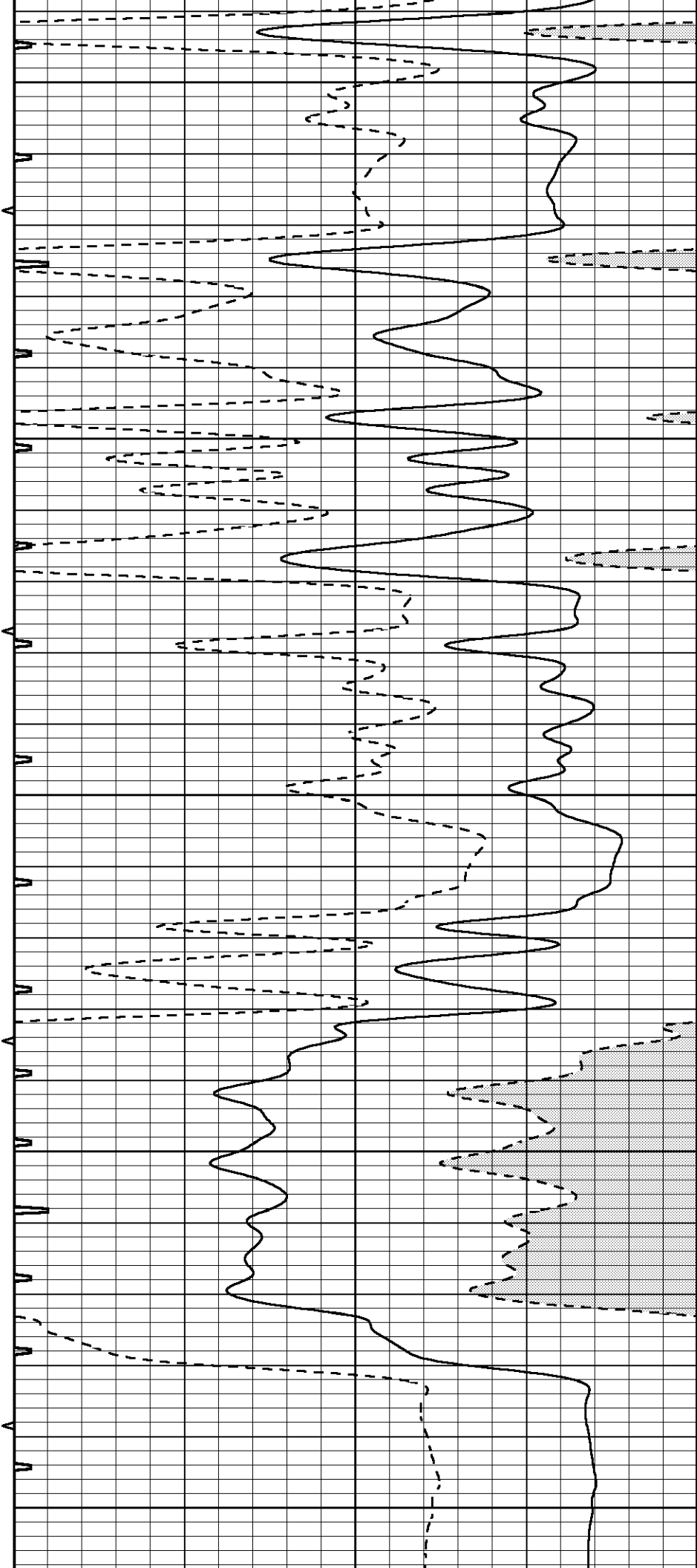
4350

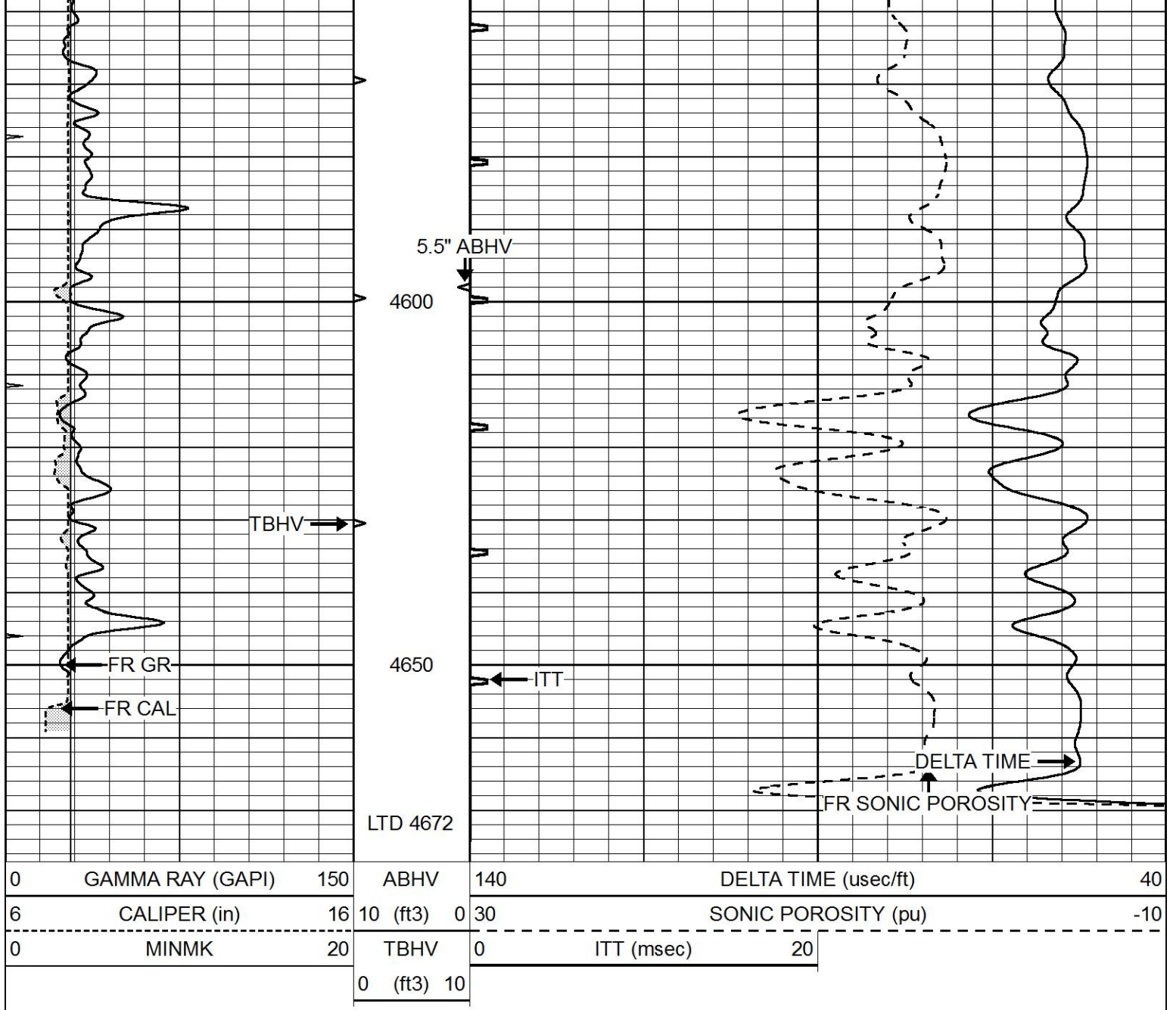
4400

4450

4500

4550

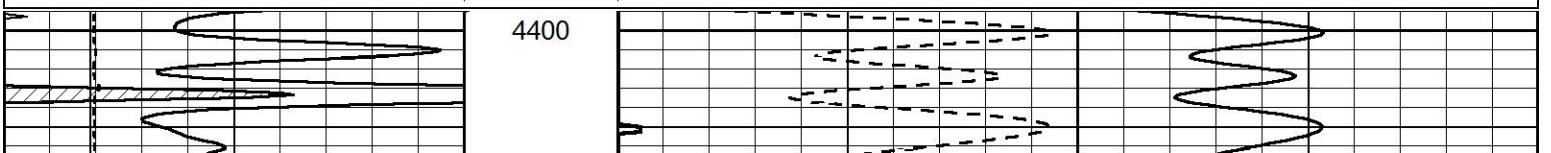


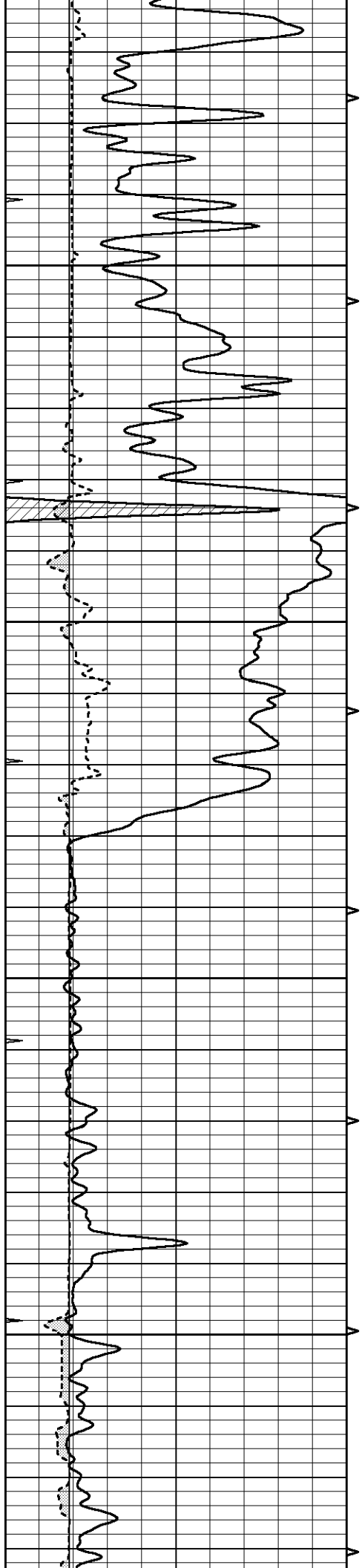


REPEAT SECTION

Database File 4546pe.db
 Dataset Pathname pass7.2
 Presentation Format slt
 Dataset Creation Thu Jun 18 18:20:08 2020
 Charted by Depth in Feet scaled 1:240

0	GAMMA RAY (GAPI)	150	ABHV	140	DELTA TIME (usec/ft)	40
6	CALIPER (in)	16	10 (ft3)	0 30	SONIC POROSITY (pu)	-10
0	MINMK	20	TBHV	0	ITT (msec)	20
			0 (ft3)	10		





4450

4500

4550

4600

