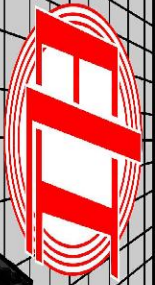


MICRO LOG



Company DARRAH OIL COMPANY, LLC.
 Well YOUNKIN #1-10
 Field WILDCAT
 County LOGAN State KANSAS

Location: API #: 15-109-21604-0000
 2355' FSL & 290' FEL
 NE - NE - NE - SE
 SEC 10 TWP 14s RGE 34W
 Permanent Datum GROUND LEVEL Elevation 2927
 Log Measured From KELLY BUSHING 11" A.G.L.
 Drilling Measured From KELLY BUSHING
 Other Services CDL/CNL DIL/SON
 Elevation K.B. 2938 D.F. 2936 G.L. 2927

Date	6/18/20
Run Number	TWO
Depth Driller	4675
Depth Logger	4672
Bottom Logged Interval	4656
Top Log Interval	3000
Casing Driller	8 5/8"@263'
Casing Logger	263
Bit Size	7 7/8"
Type Fluid in Hole	CHEMICAL MUD
Density / Viscosity	9.3/54
pH / Fluid Loss	9.5/7.5
Source of Sample	FLOWLINE
Rm @ Meas. Temp	.590@85F
Rmf @ Meas. Temp	.443@85F
Rmc @ Meas. Temp	.708@85F
Source of Rmf / Rmc	MEASUREMENT
Rm @ BHT	.411@122F
Time Circulation Stopped	4:5 HOURS
Time Logger on Bottom	6:00 P.M.
Maximum Recorded Temperature	122F
Equipment Number	922339
Location	HAYS, KANSAS
Recorded By	JEFF LUEBBERS
Witnessed By	SETH EVENSON

<<< Fold Here >>>

All interpretations are opinions based on inferences from electrical or other measurements and we cannot and do not guarantee the accuracy or correctness of any interpretation, and we shall not, except in the case of gross or willful negligence on our part, be liable or responsible for any loss, costs, damages, or expenses incurred or sustained by anyone resulting from any interpretation made by any of our officers, agents or employees. These interpretations are also subject to our general terms and conditions set out in our current Price Schedule.

Comments

THANK YOU FOR USING E.L.I. WIRELINE SERVICES HAYS, KANSAS (785)628-6395
 DIRECTIONS
 OAKLEY, KS., 13S. ON HWY 83 TO "QUAIL RD.", 7W. TO "RD. 370" 1S. TO "PLAINS RD.", 2W. TO "RD. 350", 4S. TO "LARIAT RD.", 1W. TO CATTLE GUARD, 1W. IN PASTURE THEN TAKE LEFT FORK

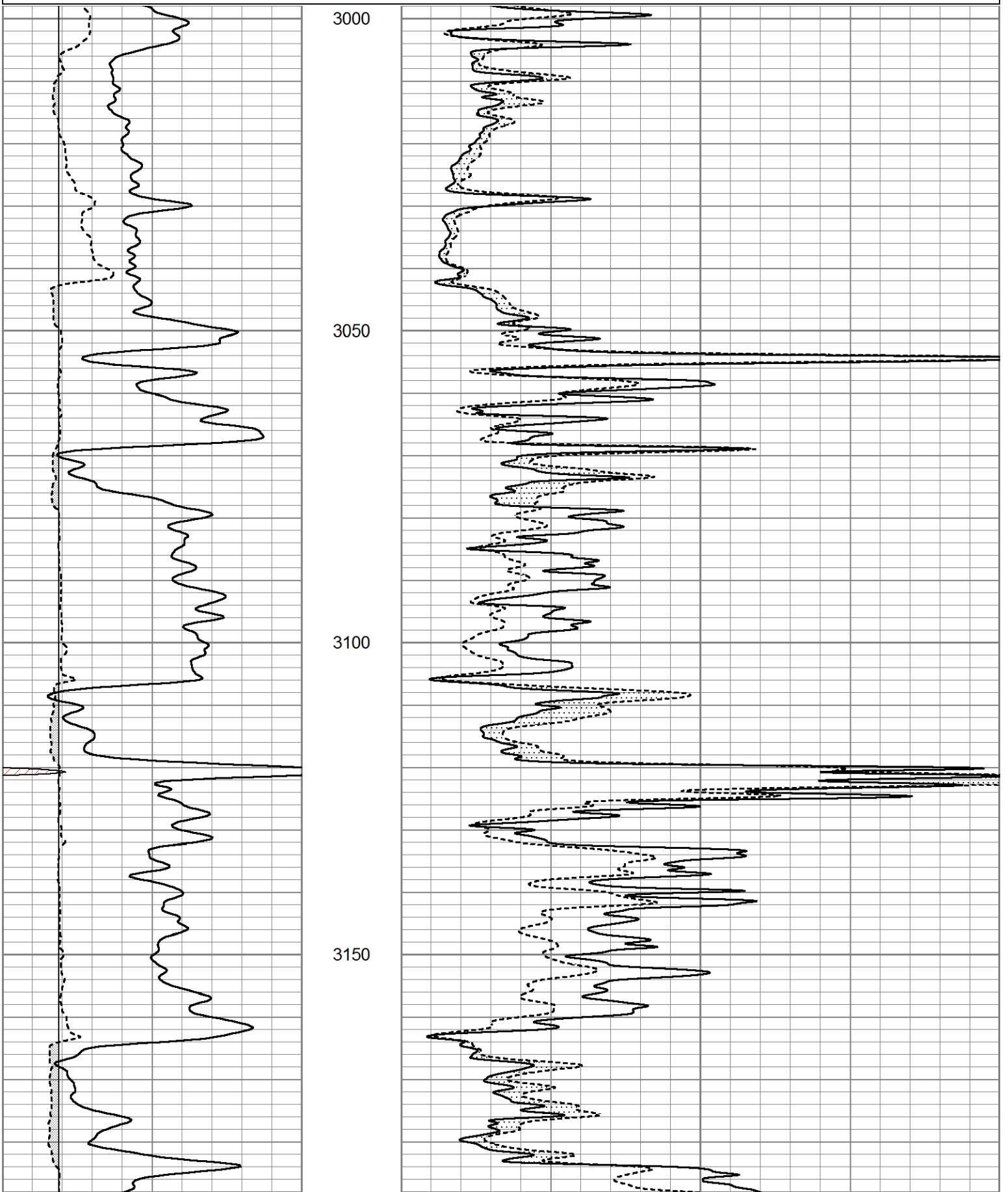


MAIN SECTION

Database File 4546pe.db
 Dataset Pathname pass8.1
 Presentation Format micro
 Dataset Creation Thu Jun 18 18:55:36 2020
 Charted by Depth in Feet scaled 1:240

0	GR (GAPI)	150
6	MELCAL (in)	16

0	MEL20 (Ohm-m)	40
0	MEL15 (Ohm-m)	40



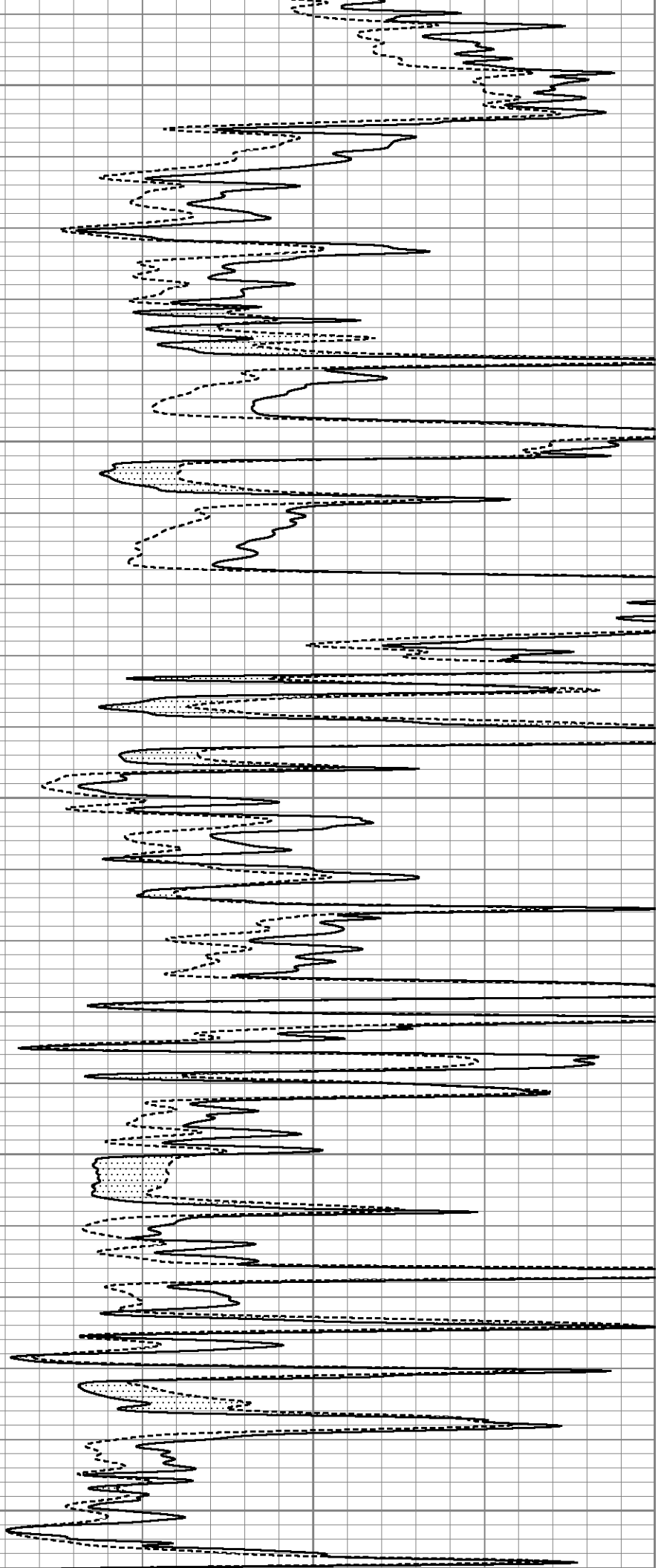
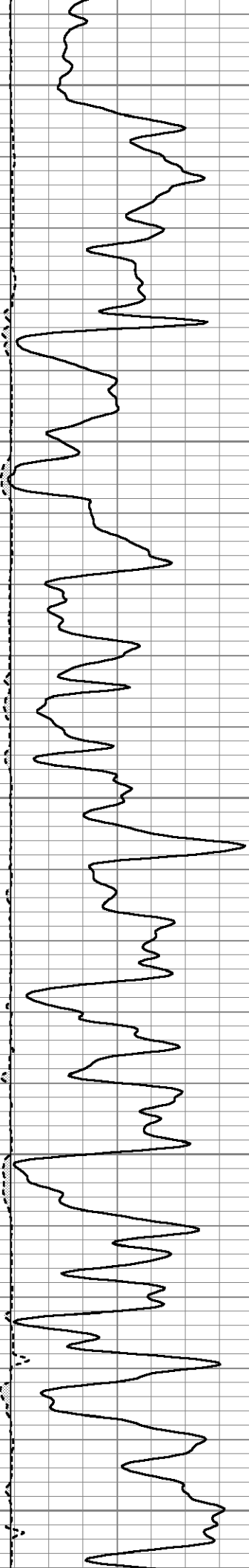
3200

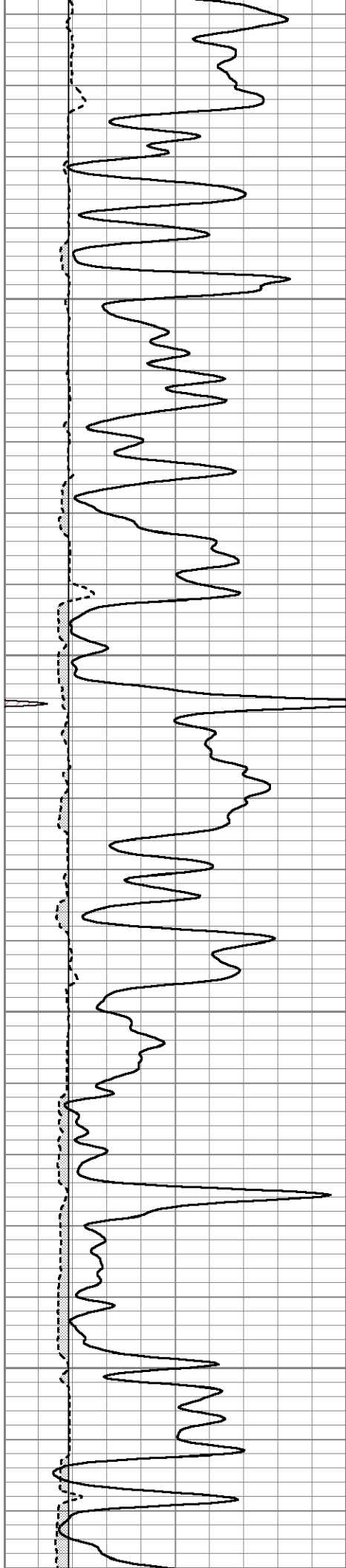
3250

3300

3350

3400



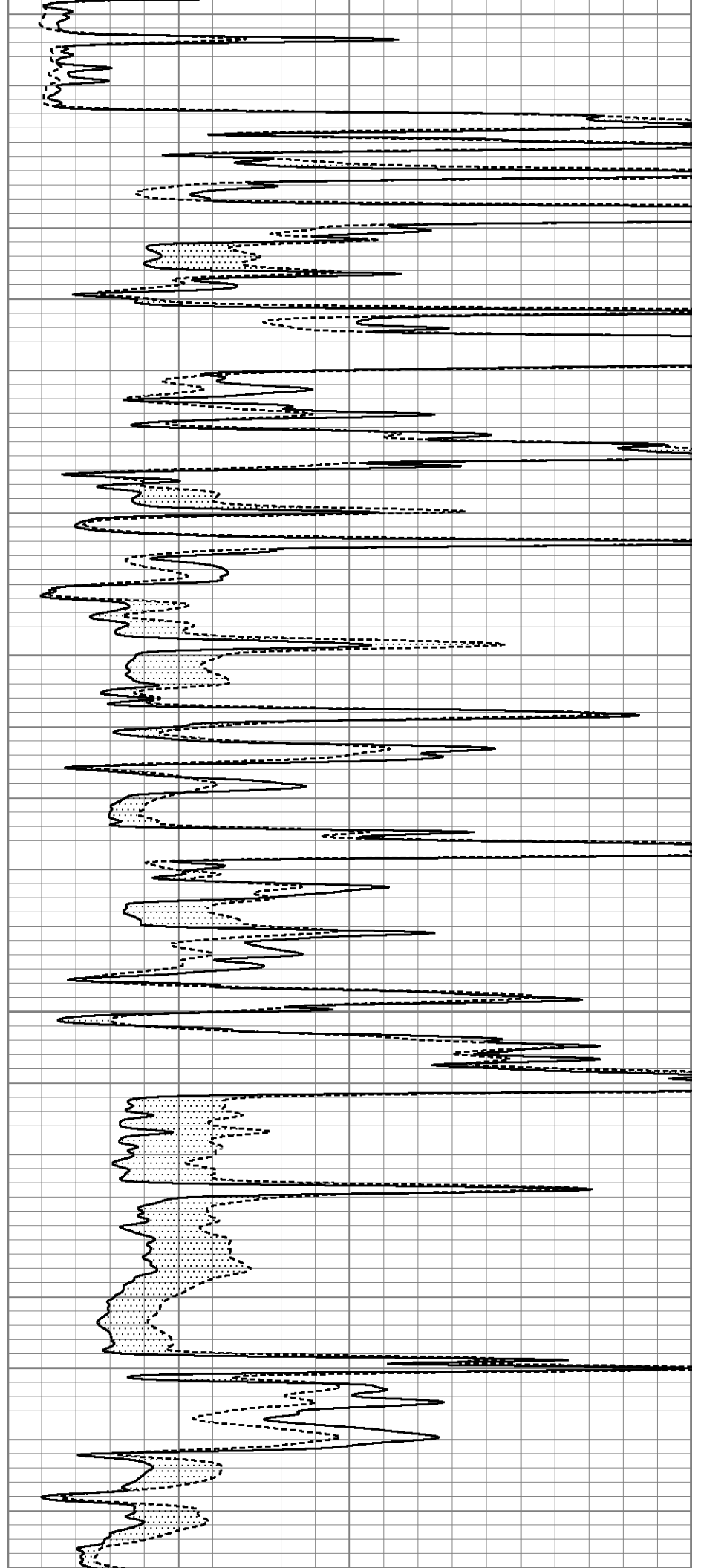


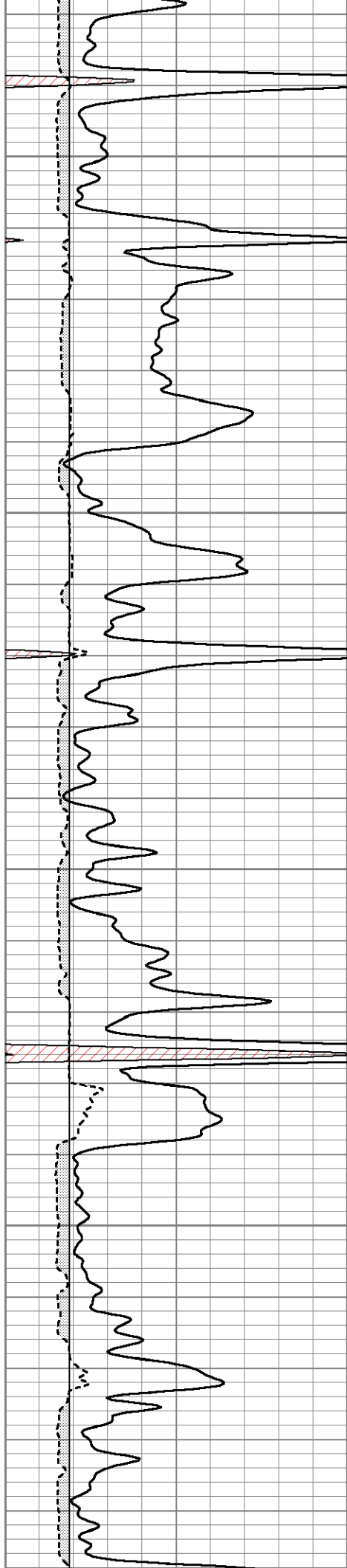
3450

3500

3550

3600



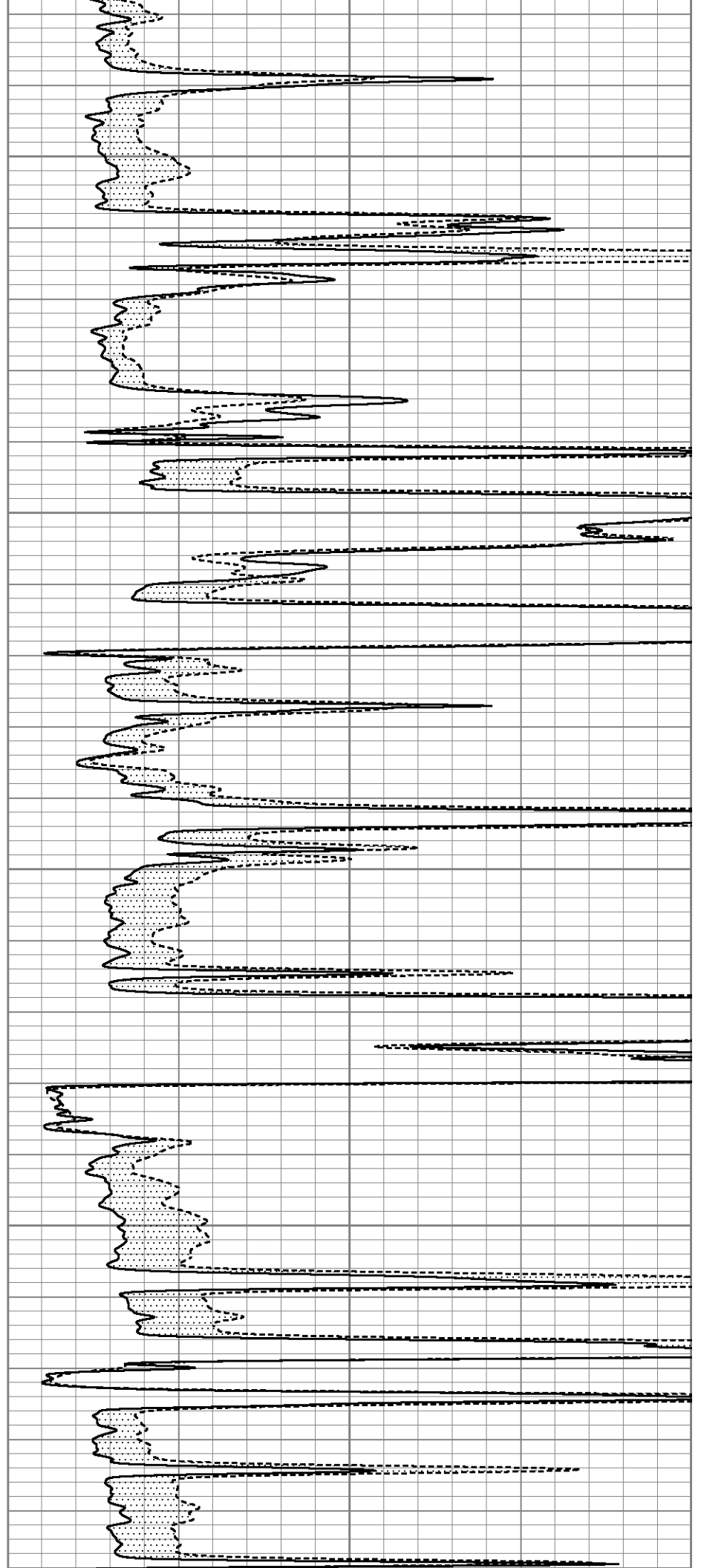


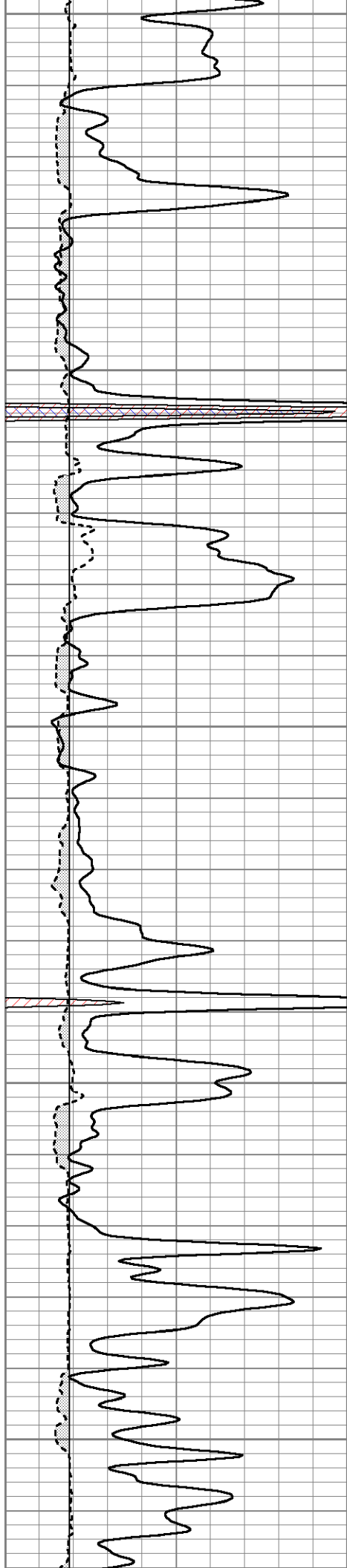
3650

3700

3750

3800





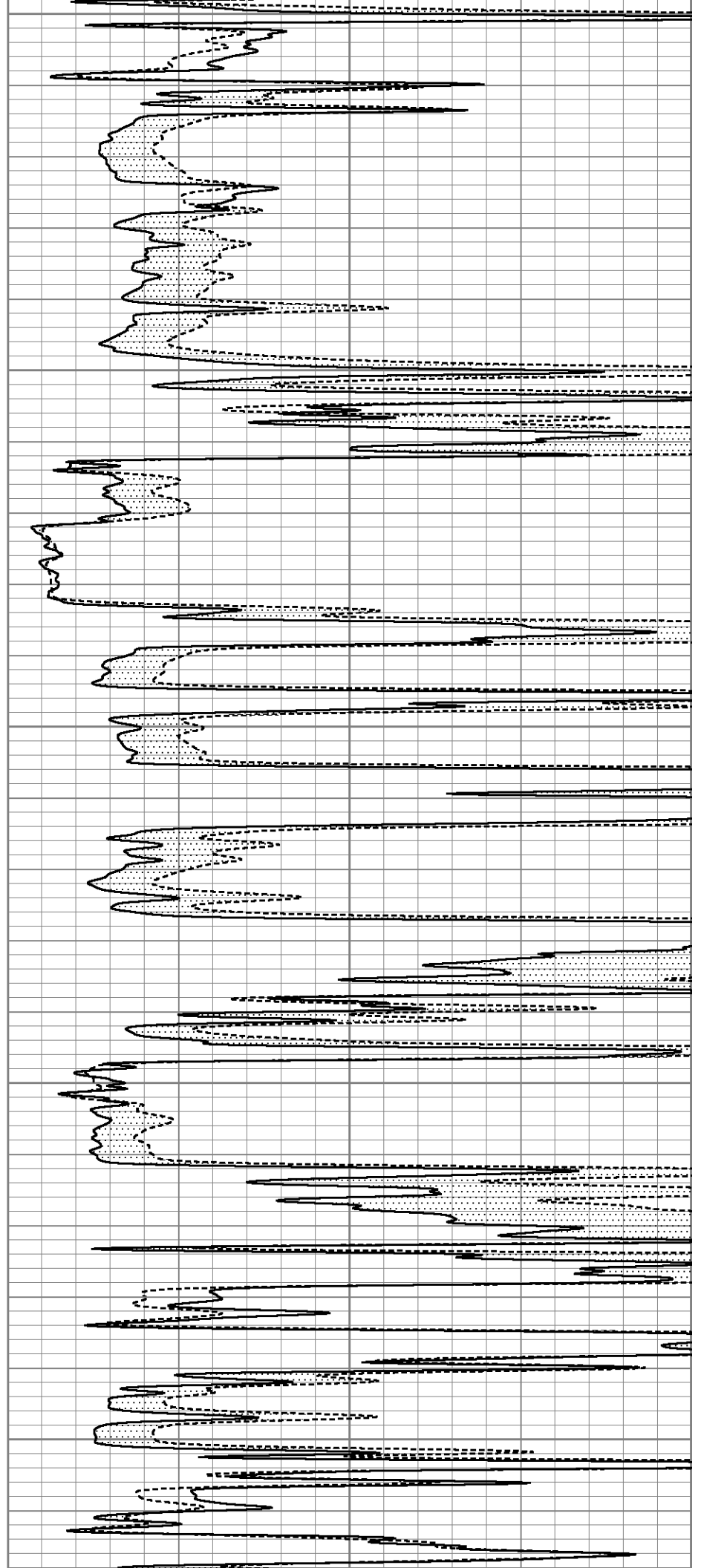
3850

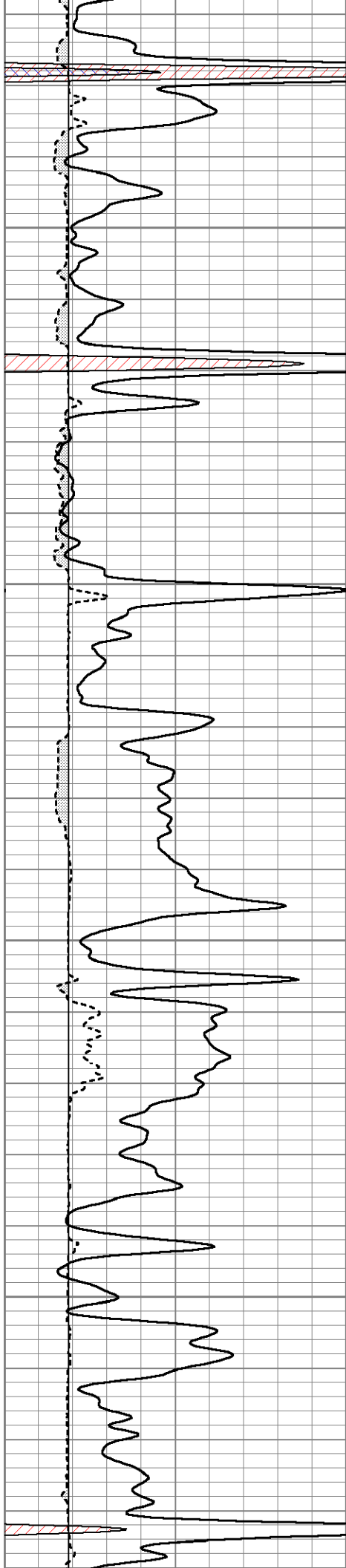
3900

3950

4000

4050



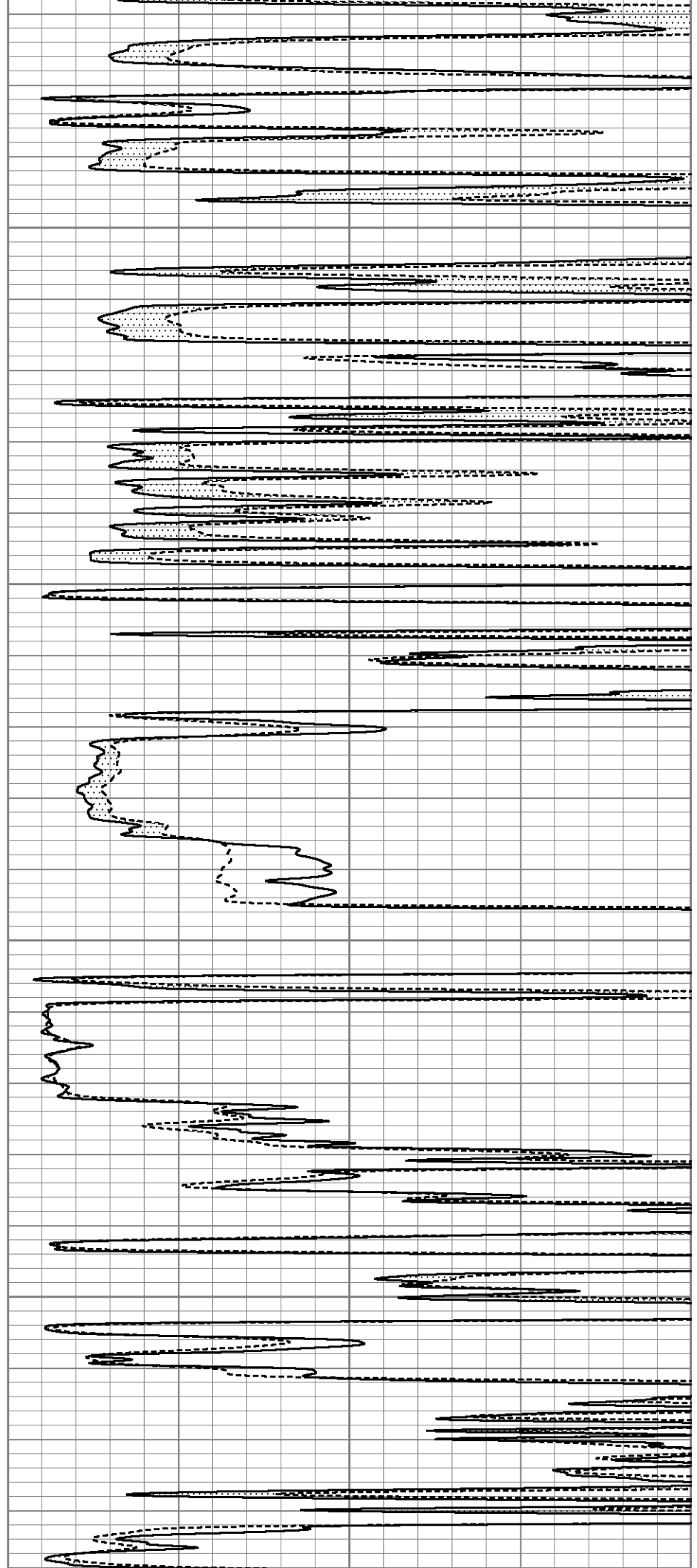


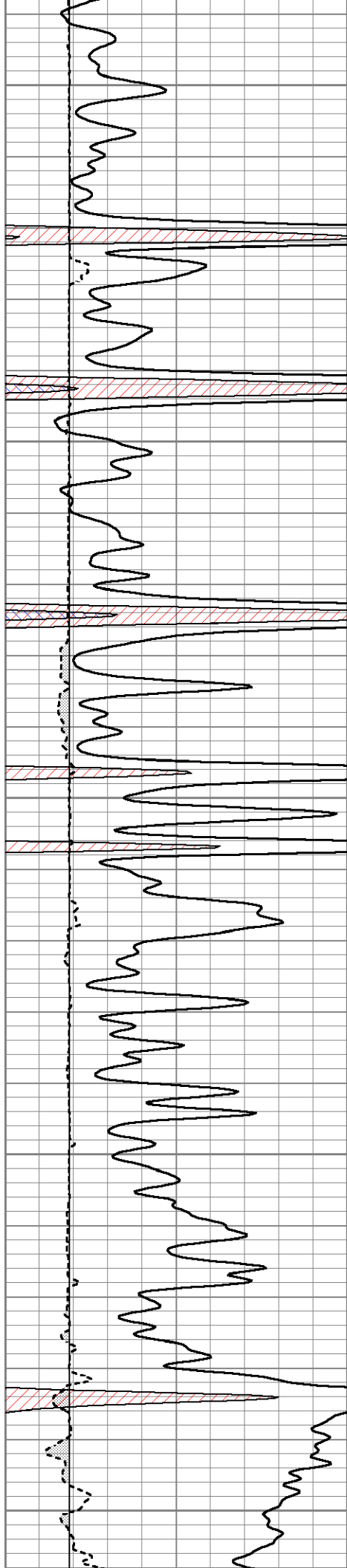
4100

4150

4200

4250





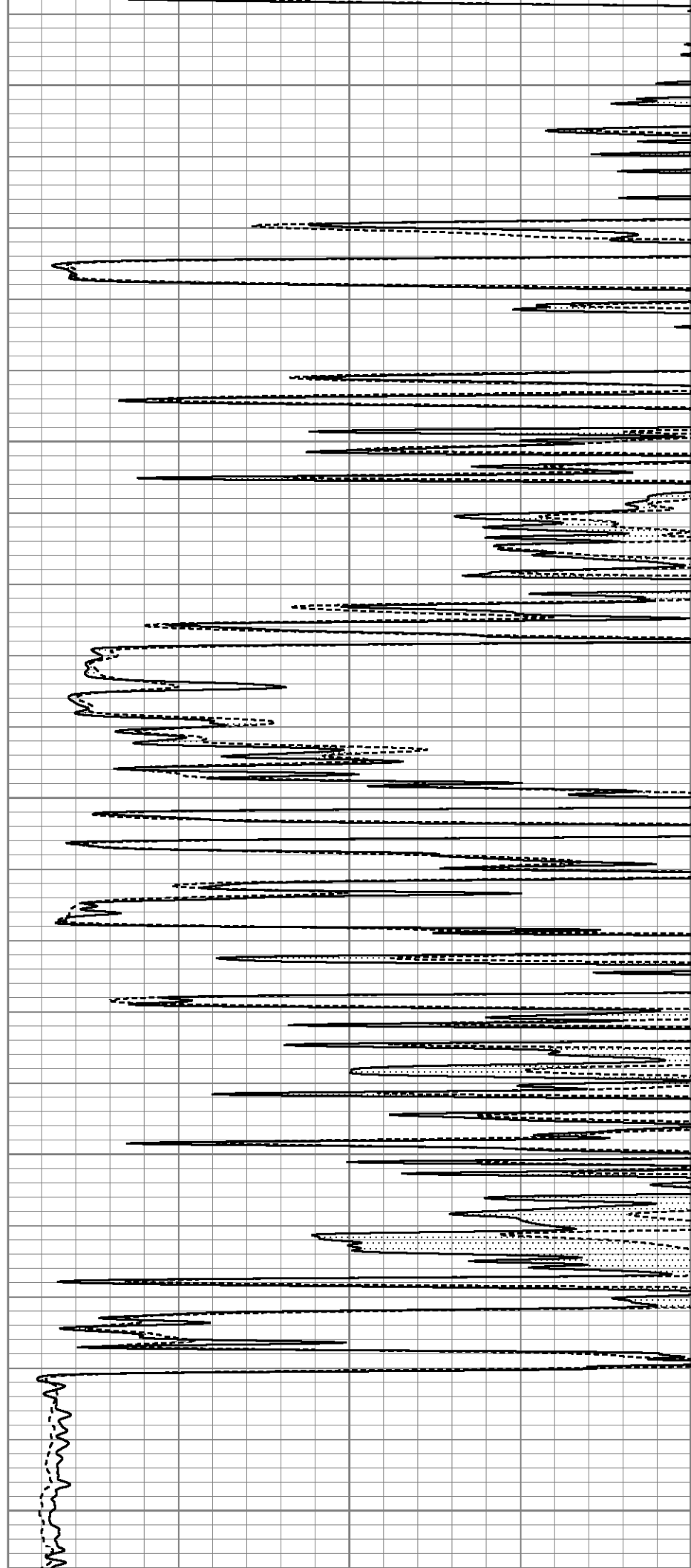
4300

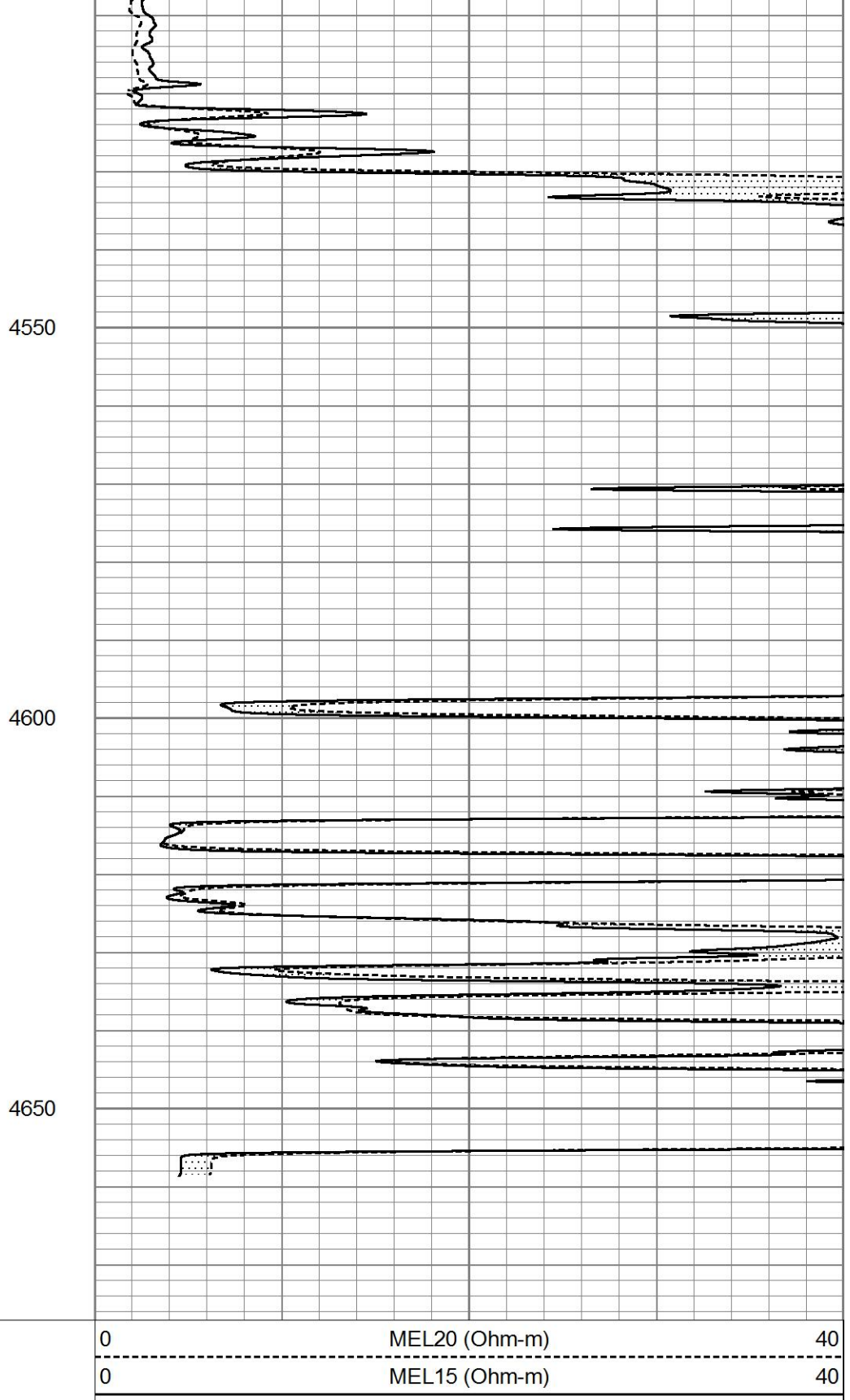
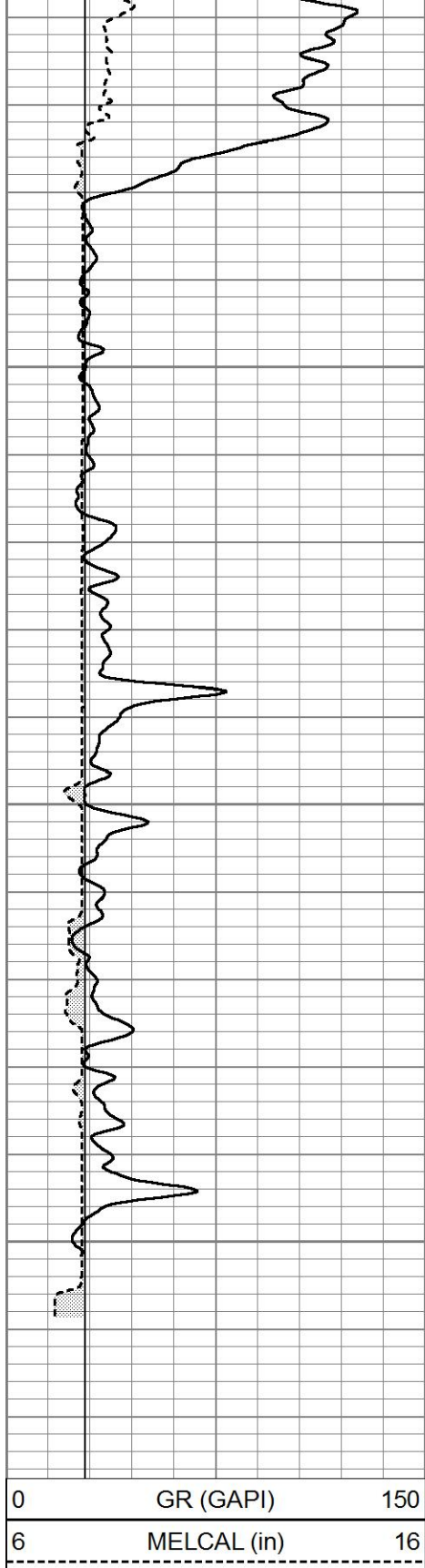
4350

4400

4450

4500



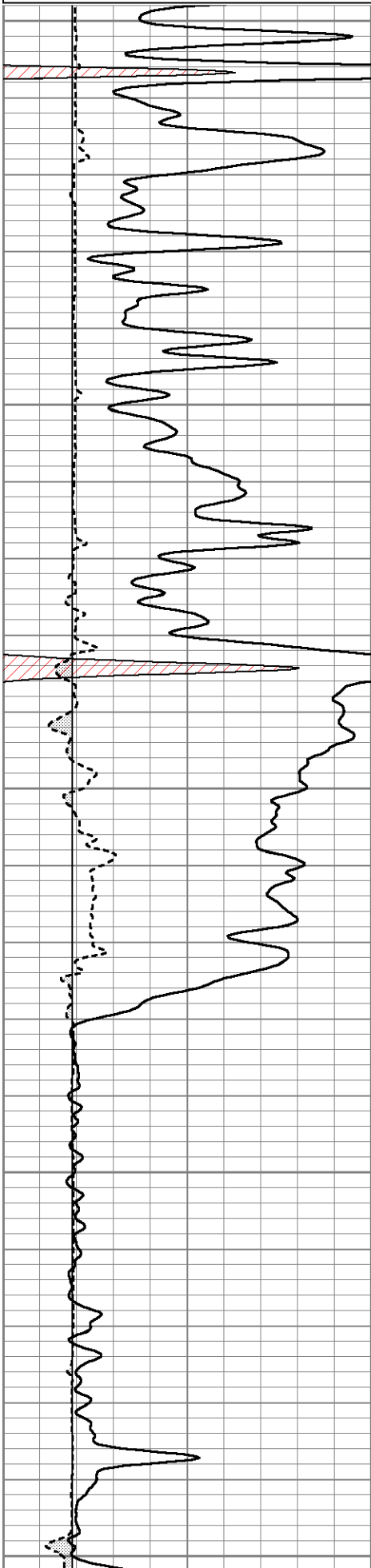


REPEAT SECTION

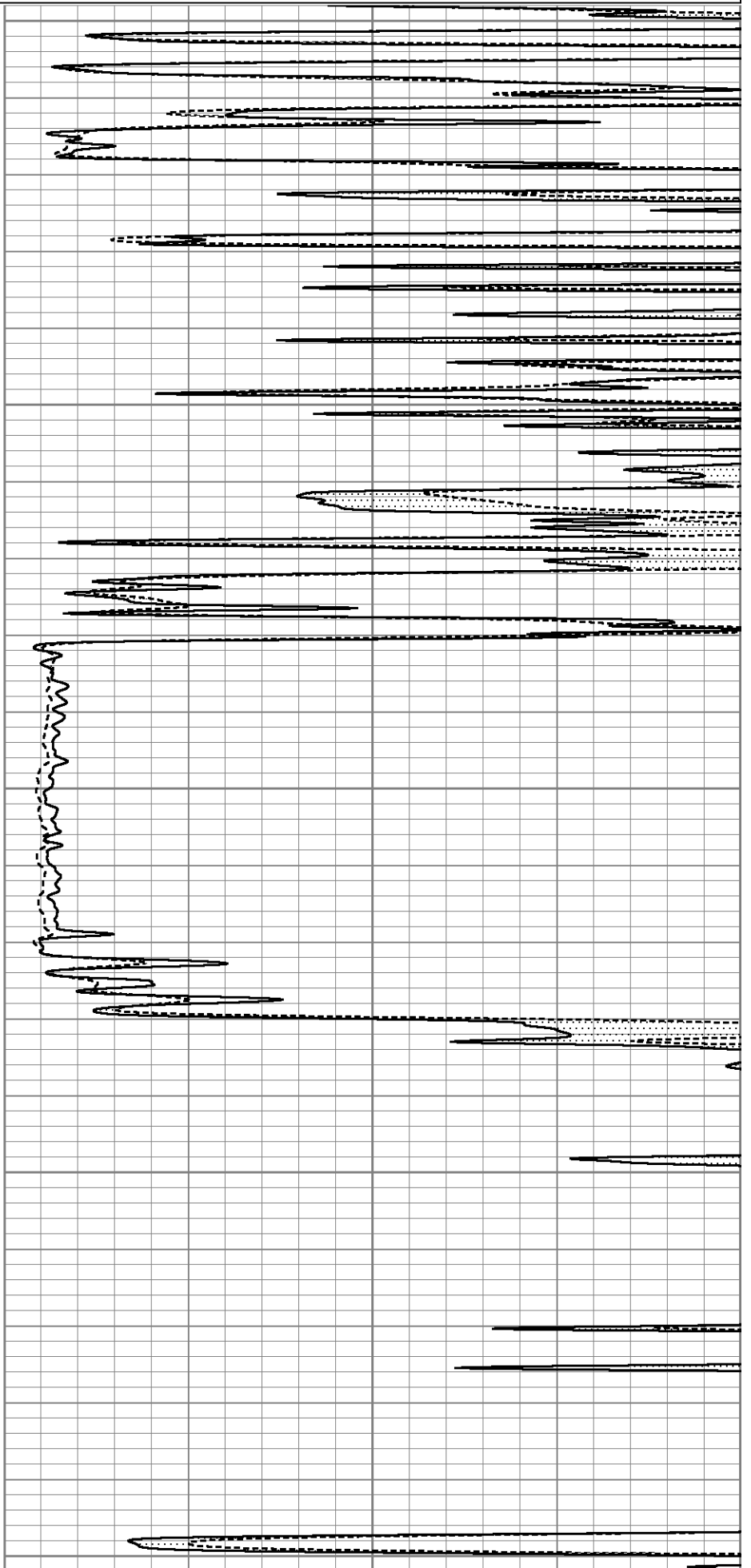
Database File 4546pe.db
 Dataset Pathname pass7.1
 Presentation Format micro
 Dataset Creation Thu Jun 18 18:16:29 2020

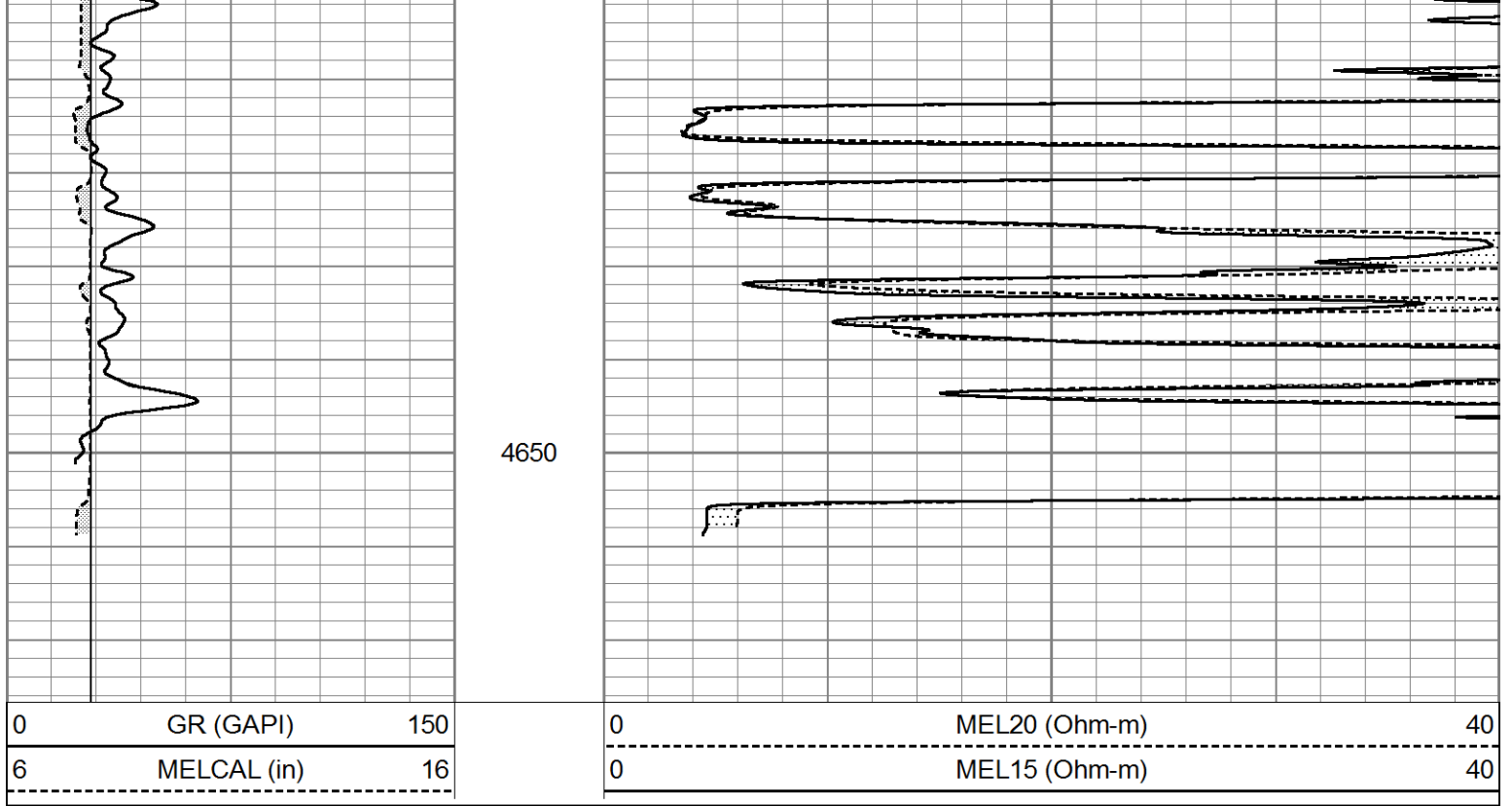
0	GR (GAPI)	150
6	MELCAL (in)	16

0	MEL20 (Ohm-m)	40
0	MEL15 (Ohm-m)	40



4400
4450
4500
4550
4600





Calibration Report

Database File 4546pe.db
 Dataset Pathname pass8.1
 Dataset Creation Thu Jun 18 18:55:36 2020

MICRO Calibration Report

Serial Number: 070912
 Tool Model: ProbeN
 Performed: Thu Jun 18 18:03:19 2020

Caliper Calibration: Gain=3.361 Offset=0.874

References	Low Cal	High Cal
	8.000	16.000
Readings	2.120	4.500

1.5" Calibration: Gain=45.000 Offset=-0.800

References	Low Cal	High Cal
	0.000	20.000
Readings	0.002	1.239

2" Calibration: Gain=50.000 Offset=-0.300

References	Low Cal	High Cal
	0.000	20.000
Readings	0.003	1.075

Gamma Ray Calibration Report

Serial Number: 070559
 Tool Model: OPEN_GR
 Performed: Thu Jun 18 11:25:33 2020

Calibrator Value:	1.0	GAPI
Background Reading:	0.0	cps
Calibrator Reading:	1.0	cps

Sensitivity:

0.3200

GAPI/cps