



Pioneer Energy Services

Dual Induction Log

15-007-24,209-00-00

API No.

Company Indian Oil Company

Well Yates #1

Field Stranathan Pool

County Barber State

Kansas

Location

SW NW NE NW
517' FNL & 1573' FWL

Other Services
CNL/CDL

Sec: 13

Twp: 35S

Rge: 12W

Elevation

K.B. 1351

D.F. 1340

G.L. 1340

Ground Level

Elevation 1340

Kelly Bushing

11 Ft. Above Perm. Datum

Drilling Measured From Kelly Bushing

Date 8/23/2014

Run Number One

Depth Driller 5213

Depth Logger 5216

Bottom Logged Interval 5215

Top Log Interval 900

Casing Driller 8.625 @ 928

Casing Logger 922

Bit Size 7.875

Type Fluid in Hole Chemical

Salinity, ppm CL 5,000

Density / Viscosity 9.1 50

pH / Fluid Loss 9.5 9.6

Source of Sample Flowline

Rm @ Meas. Temp .45 @ 75

Rmf @ Meas. Temp .34 @ 75

Rmc @ Meas. Temp .61 @ 75

Source of Rmf / Rmc Charts

Rm @ BHT .26 @ 128

Operating Rig Time 3 Hours

Max Rec. Temp. F 128

Equipment Number 10

Location Hays

Recorded By C. Desai

Witnessed By Scott Alberg

<<< Fold Here >>>

All interpretations are opinions based on inferences from electrical or other measurements and we cannot and do not guarantee the accuracy or correctness of any interpretation, and we shall not, except in the case of gross or willful negligence on our part, be liable or responsible for any loss, costs, damages, or expenses incurred or sustained by anyone resulting from any interpretation made by any of our officers, agents or employees. These interpretations are also subject to our general terms and conditions set out in our current Price Schedule.

Comments

Thank you for using Pioneer Energy Services
www.pioneerenergy.com
785 625 3858

Hardtner KS, E to Stubbs Rd, S to Stateline Rd,
1 1/4 W, N Into 3/4

Database File: c:\warrior\data\indian oil_yates #1\indhd.db
Dataset Pathname: dil\indstk
Presentation Format: dil2in
Dataset Creation: Sat Aug 23 01:44:28 2014
Charted by: Depth in Feet scaled 1:600

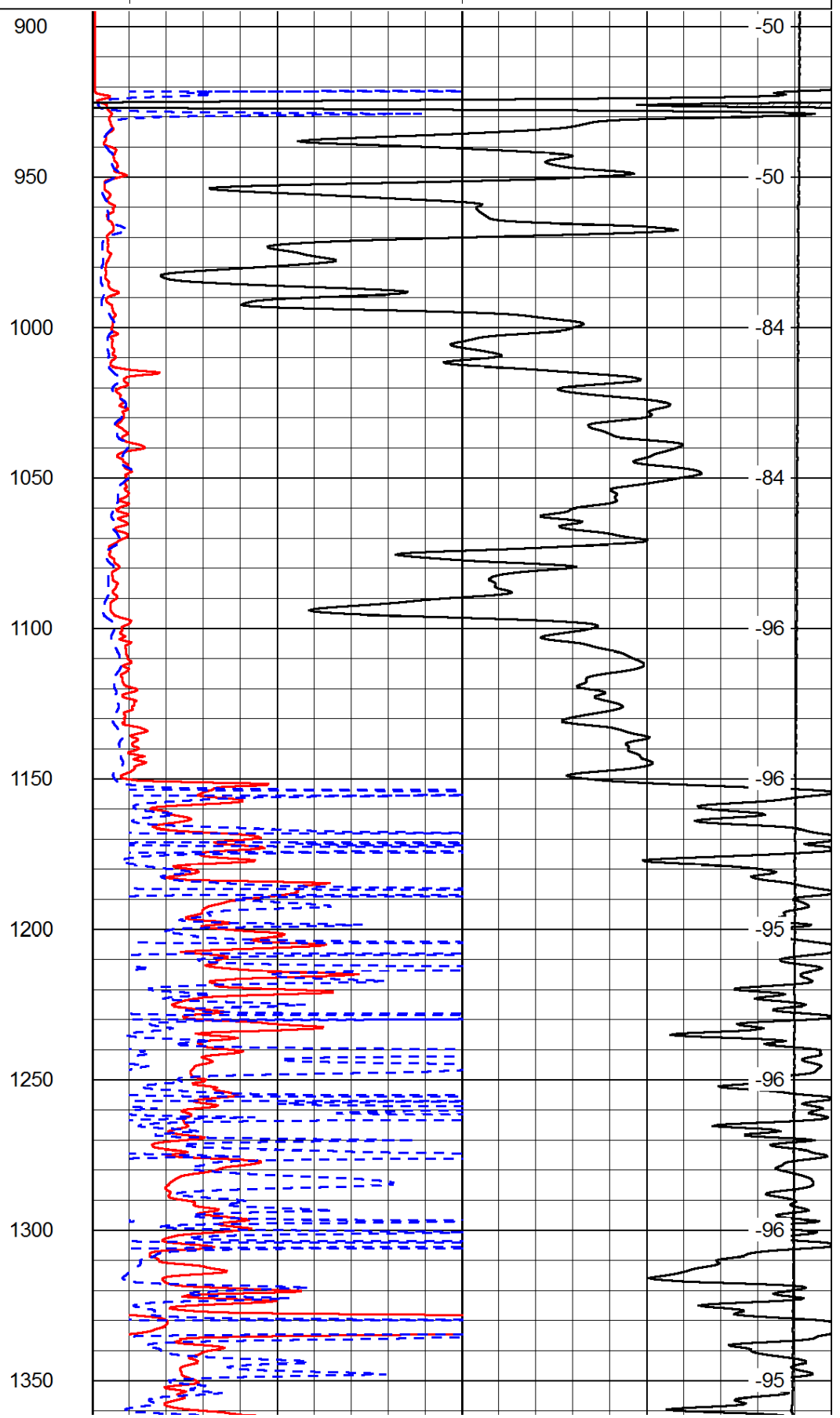
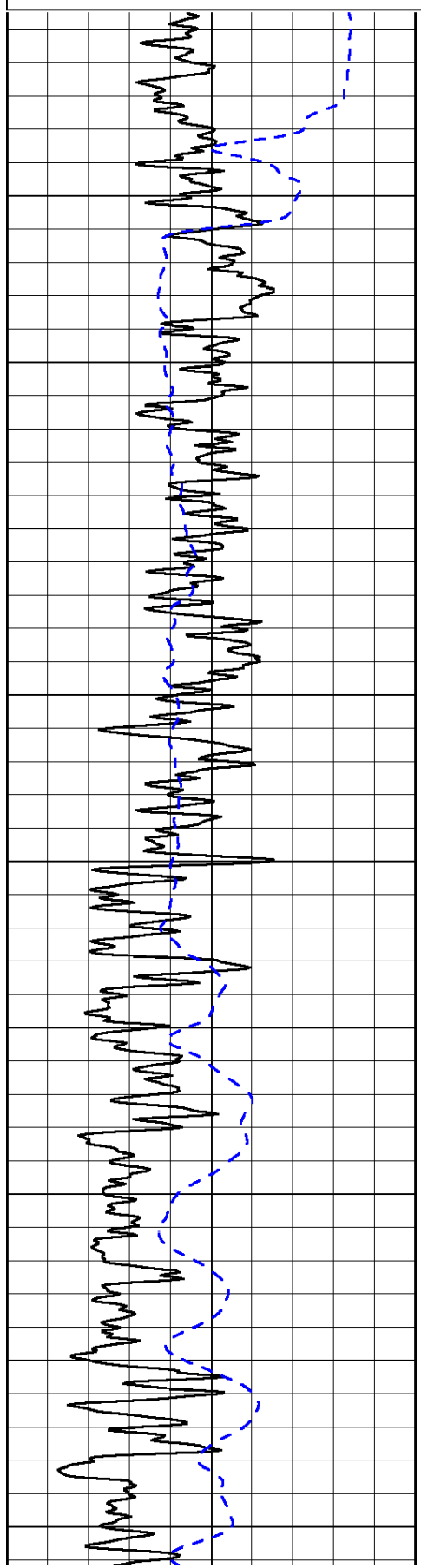
0	Gamma Ray	150
-200	SP (mV)	0

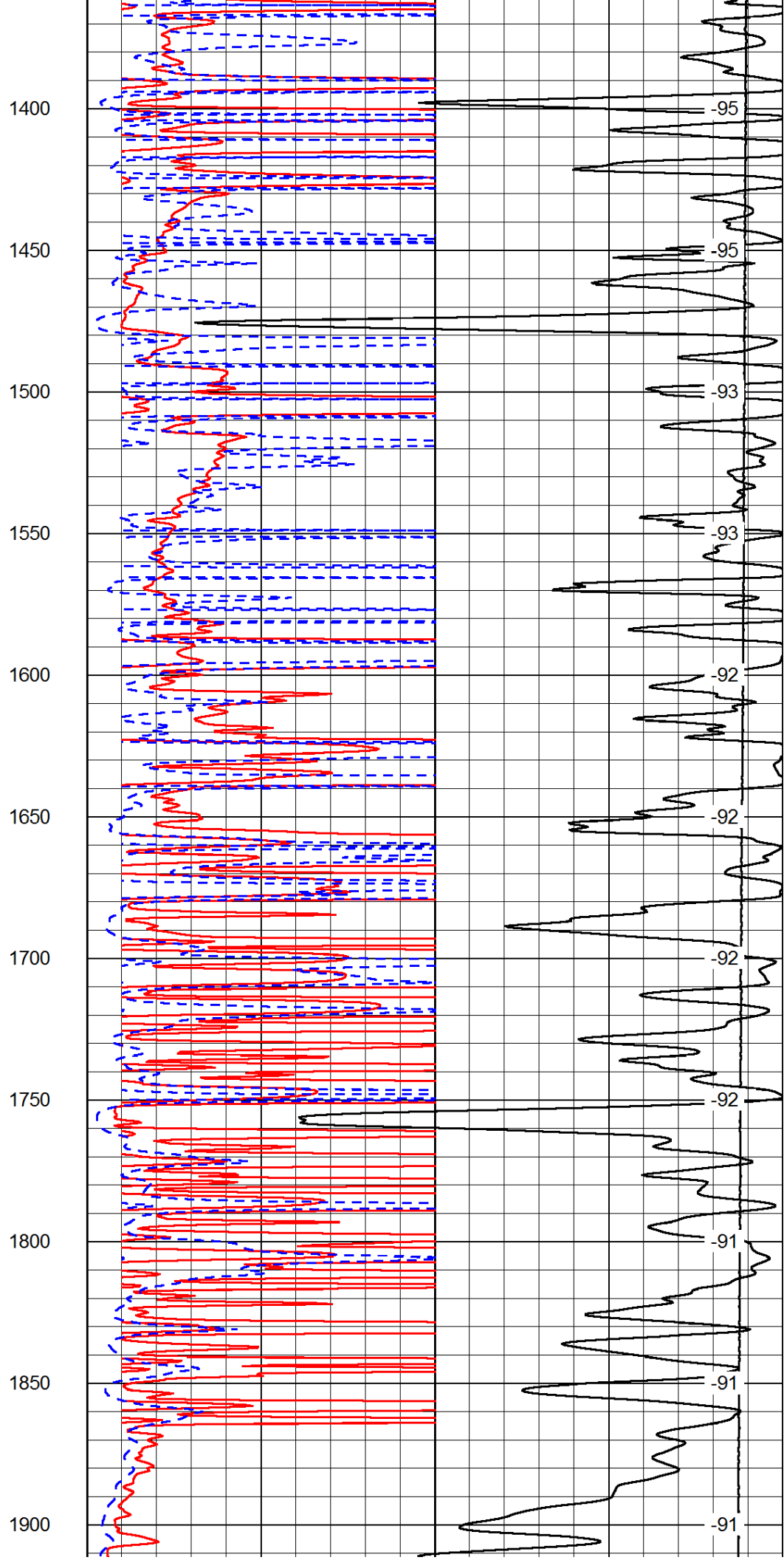
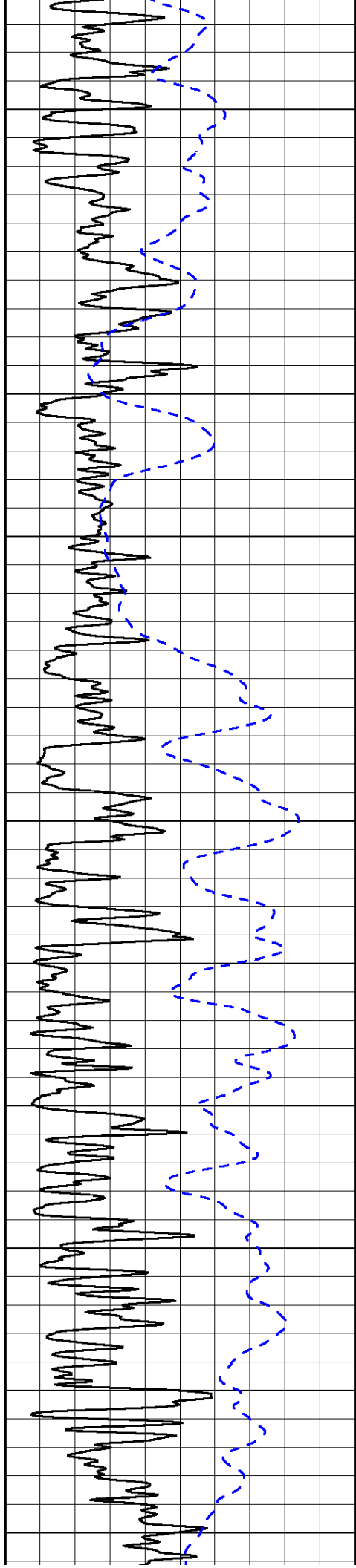
0	Shallow Resistivity	50
0	Deep Resistivity	50

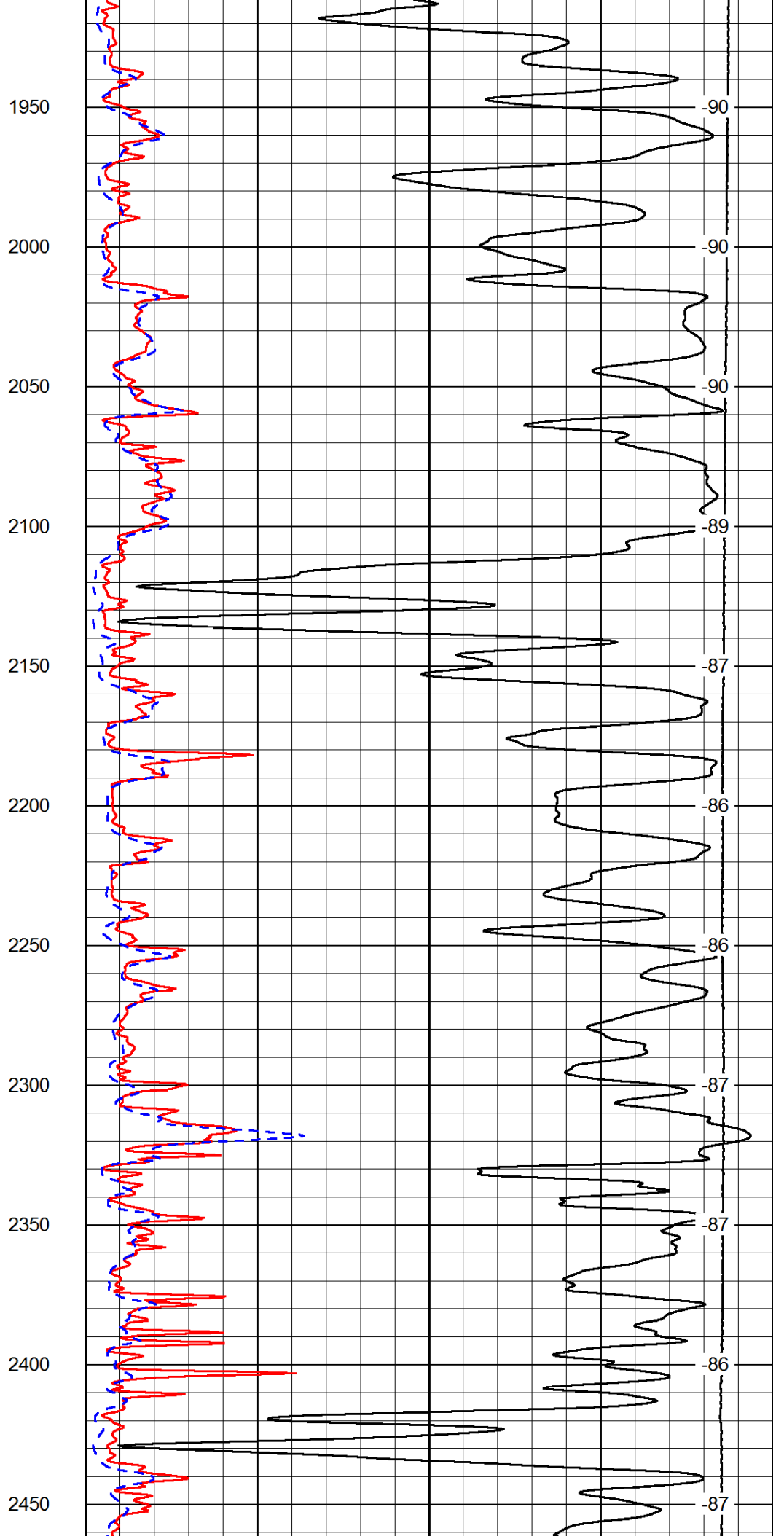
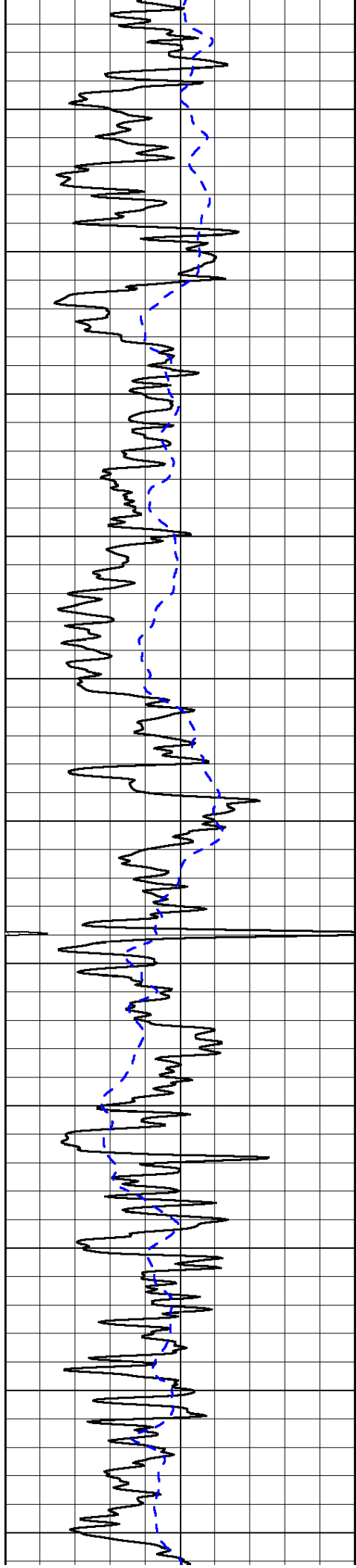
LSPD

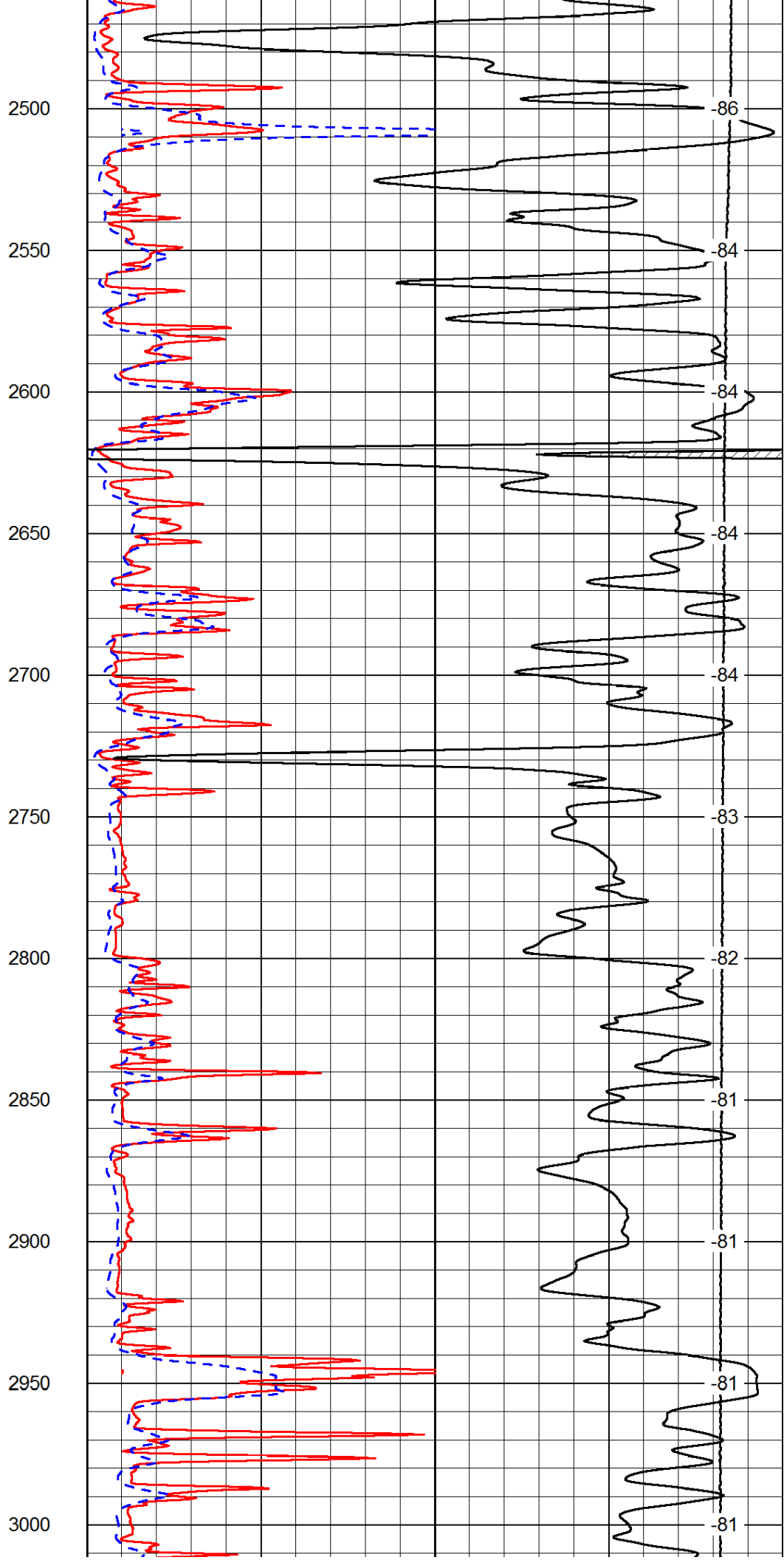
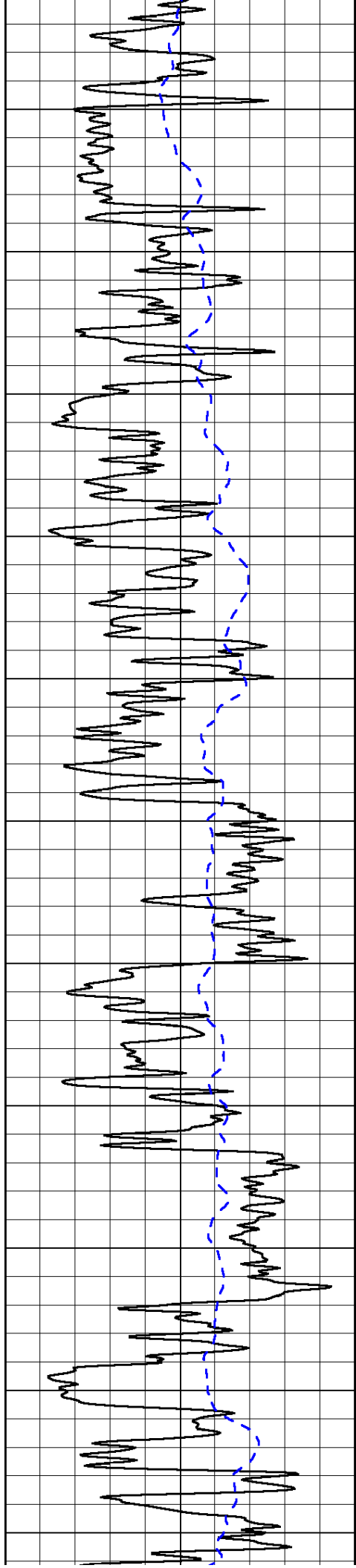
1000	Conductivity	0
15000	Line Tension	0

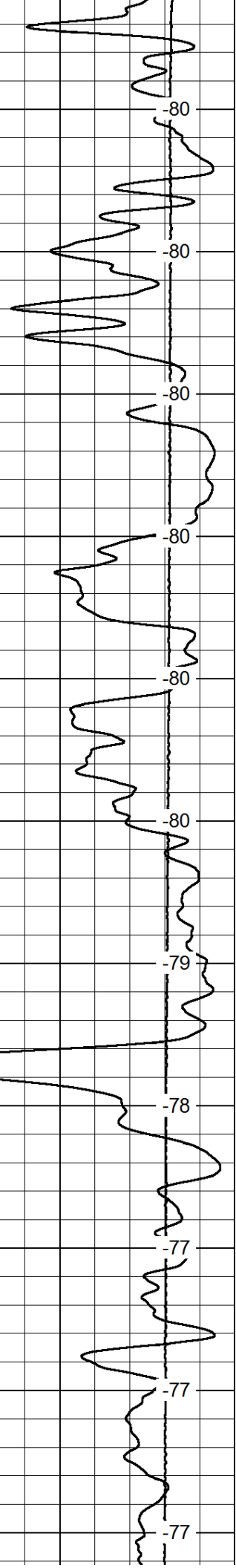
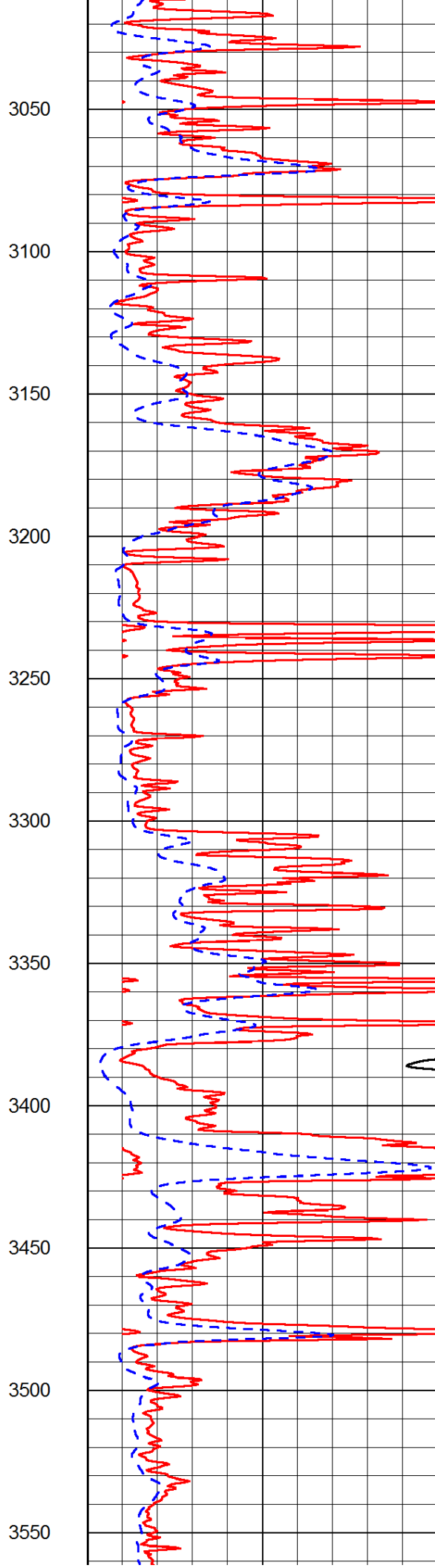
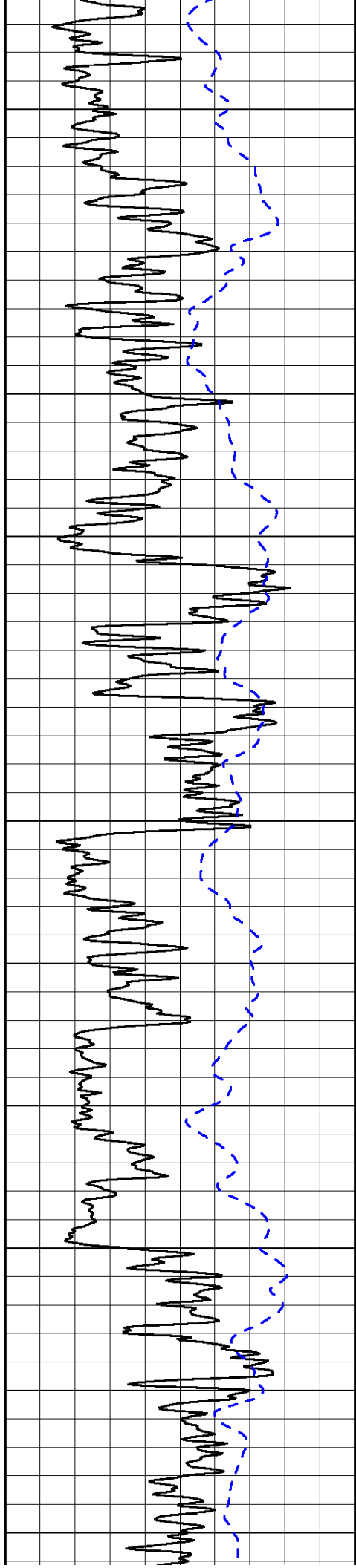
50	Shallow Resistivity	500
50	Deep Resistivity	500

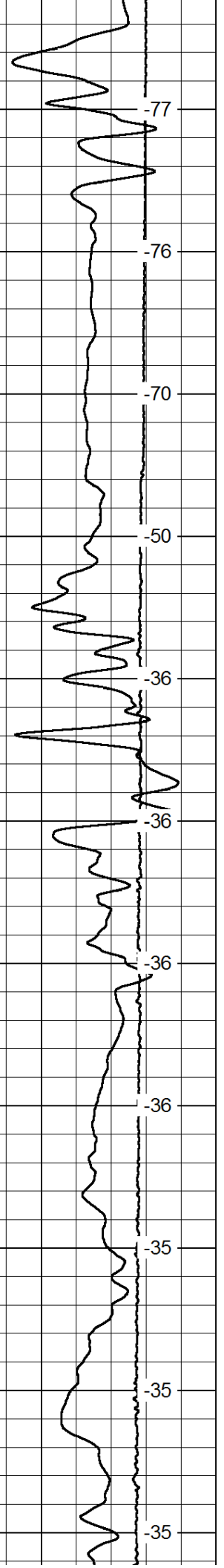
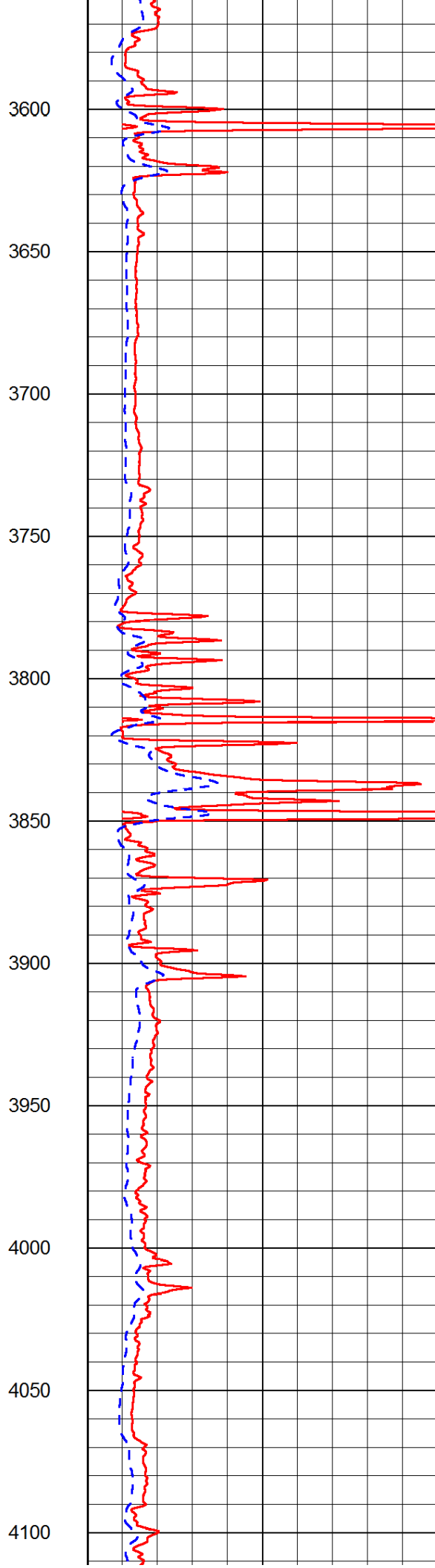
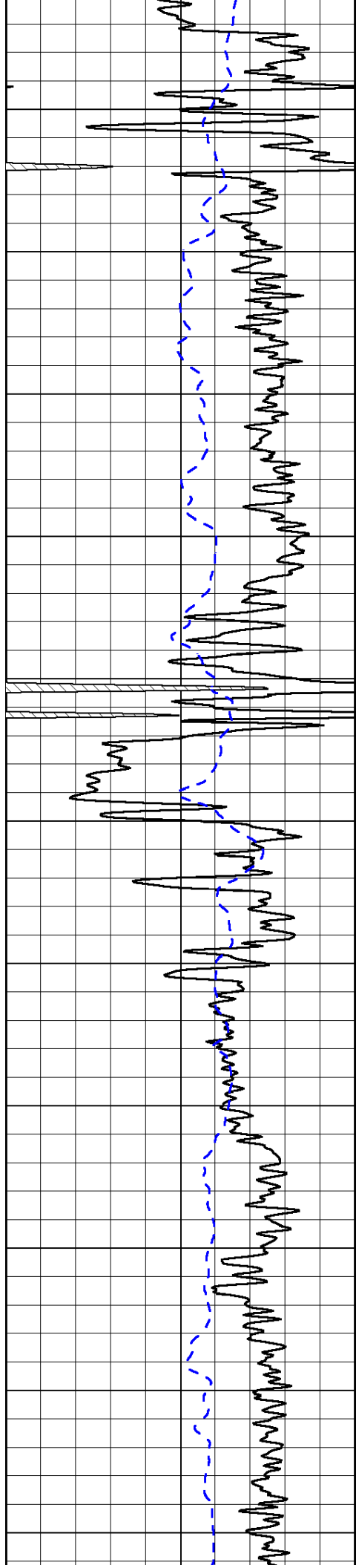


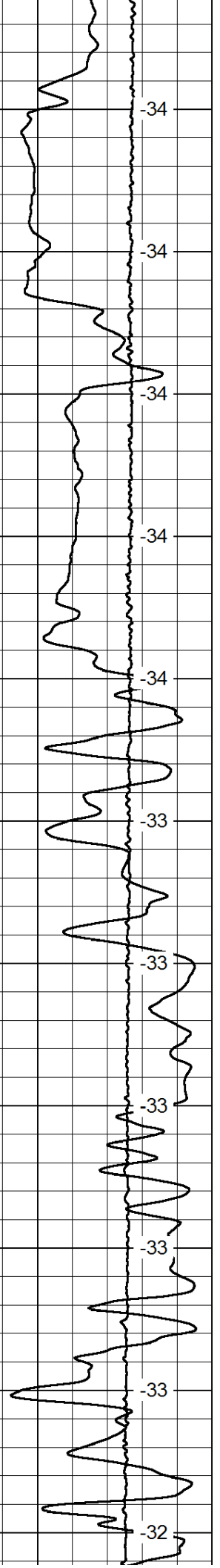
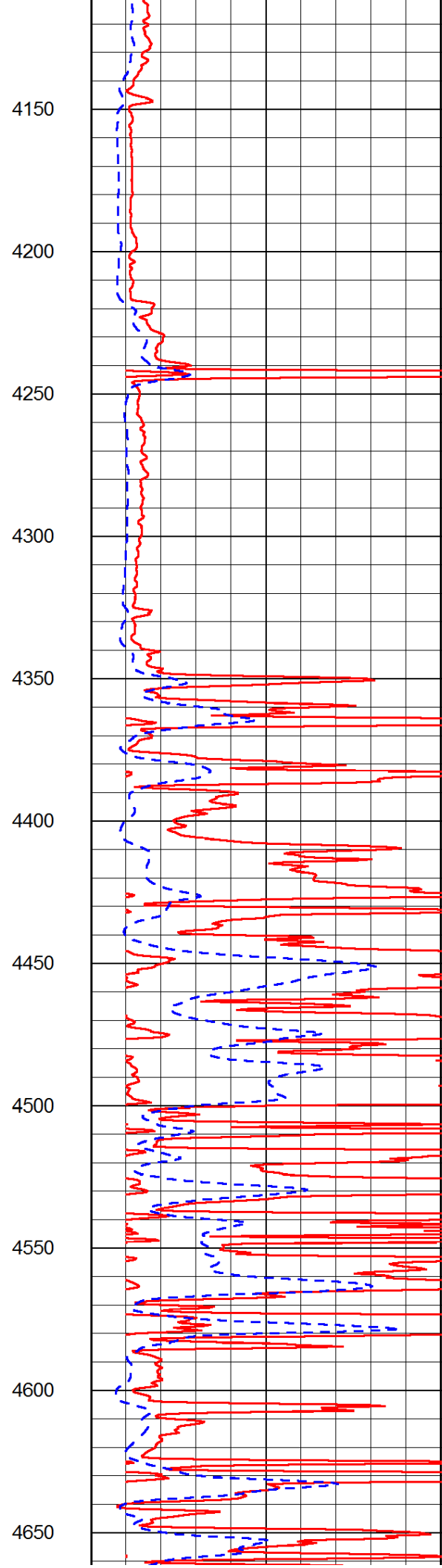
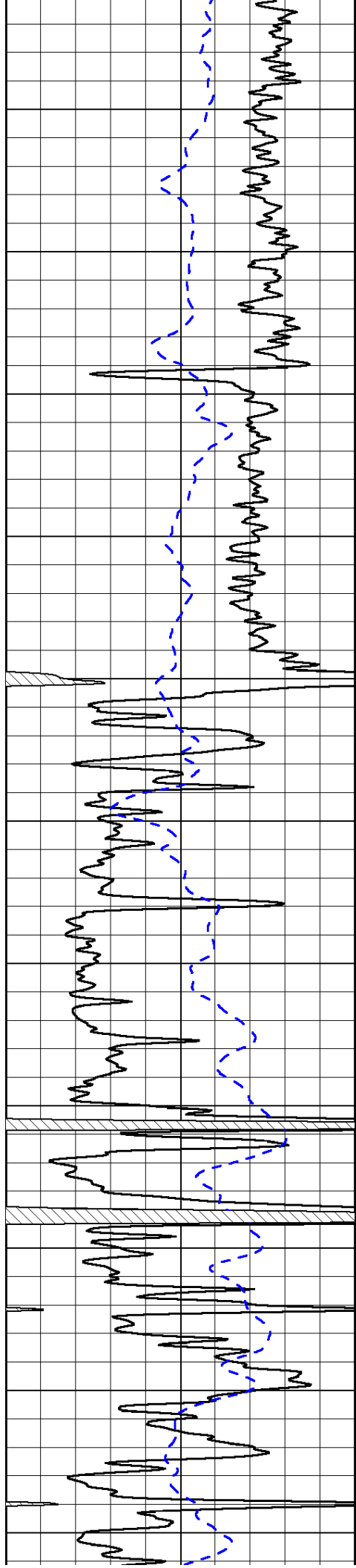


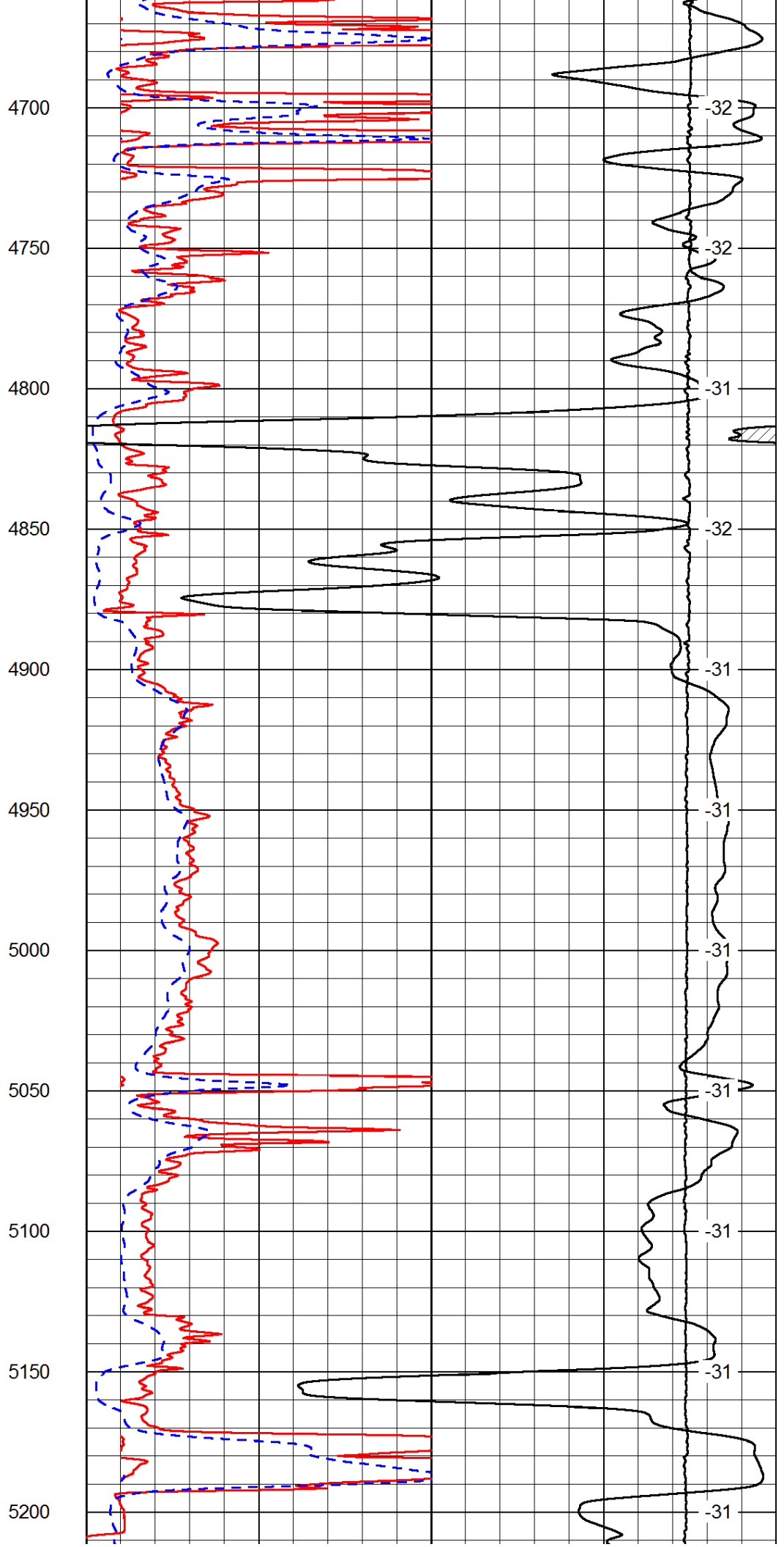
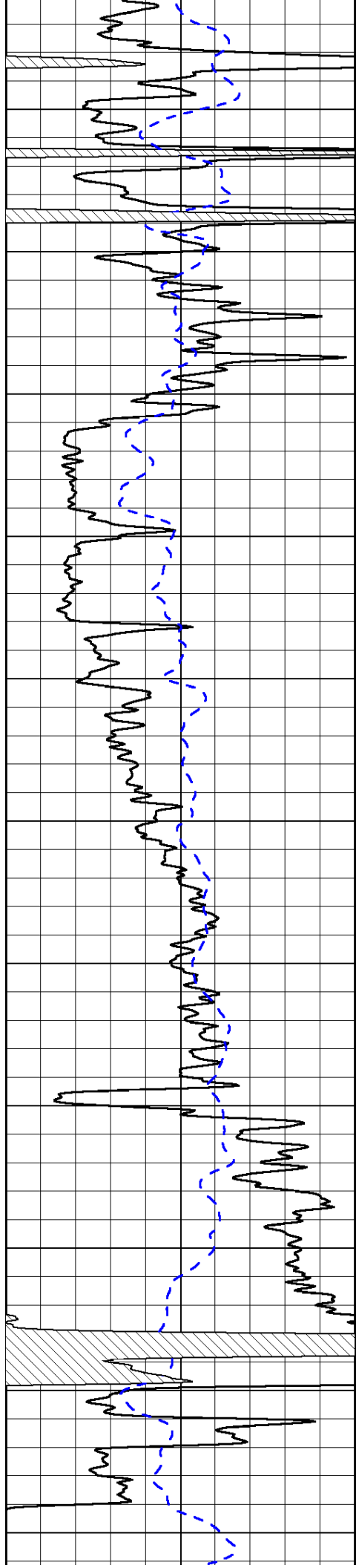








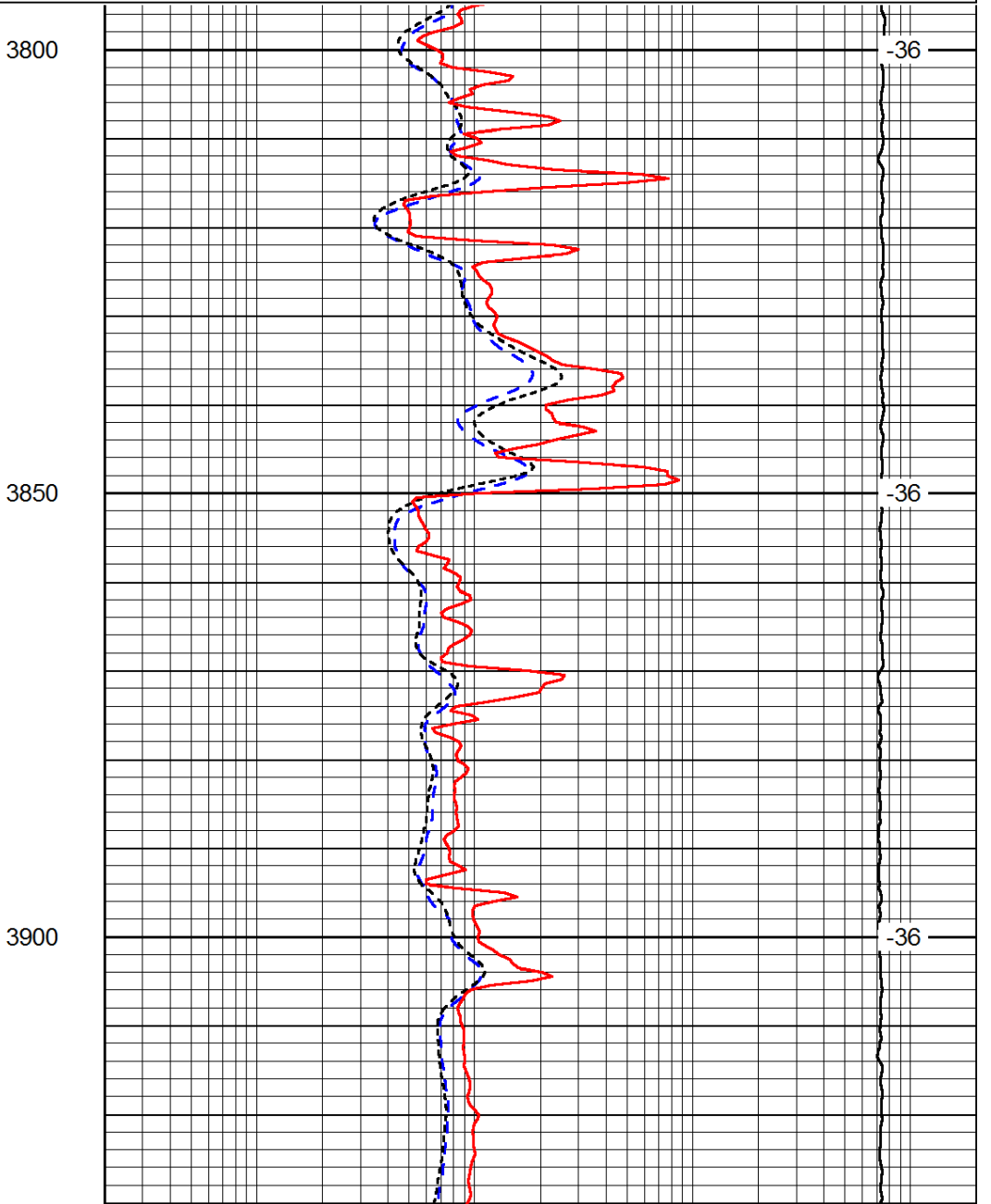
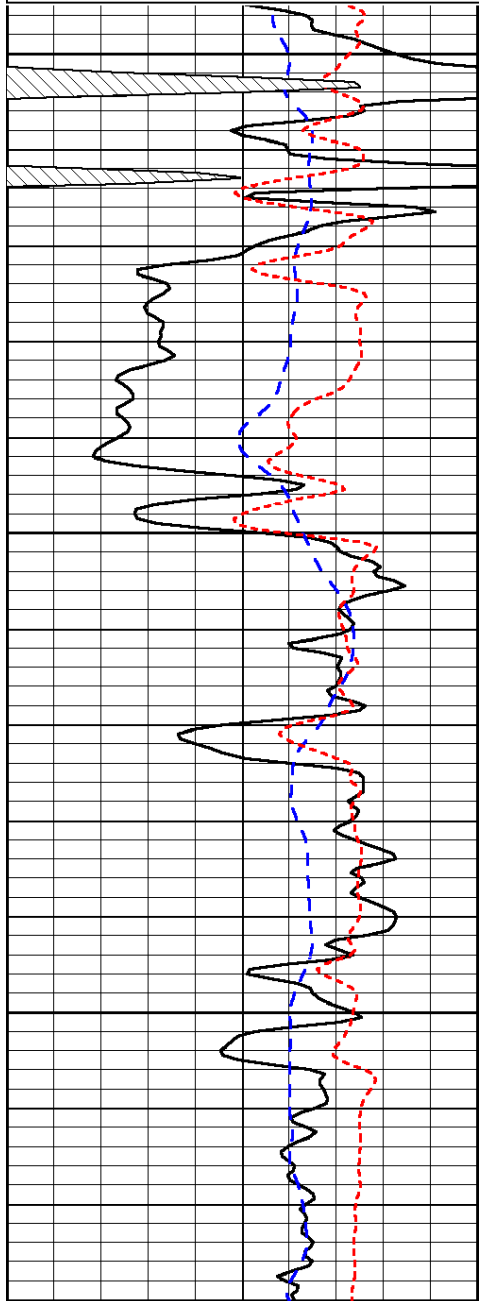


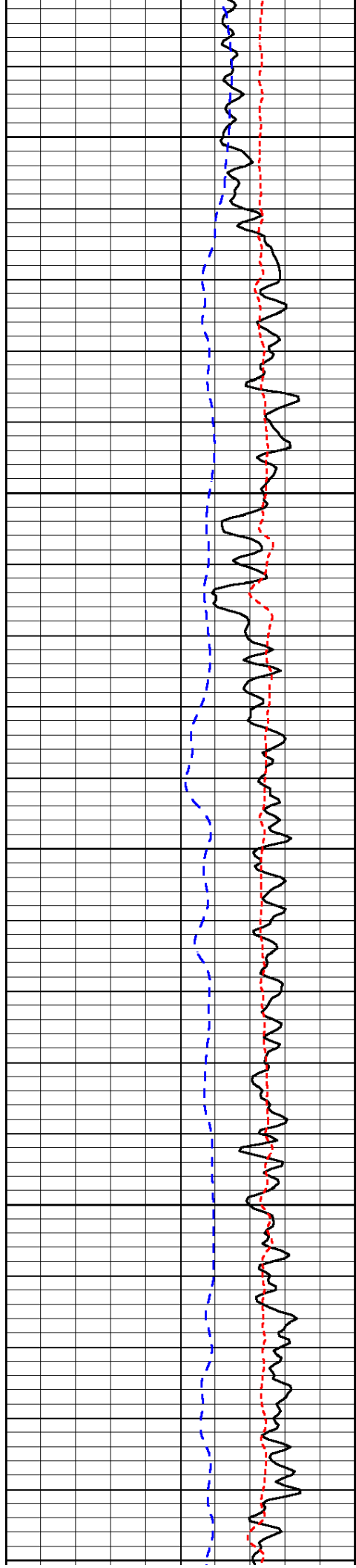


0	Gamma Ray	150	0	Shallow Resistivity	50		LSPD
-200	SP (mV)	0	0	Deep Resistivity	50		
			1000	Conductivity			0
			15000	Line Tension			0
			50	Shallow Resistivity	500		
			50	Deep Resistivity	500		

Database File: c:\warrior\data\indian oil_yates #1\indhd.db
 Dataset Pathname: dil/indstk
 Presentation Format: dil
 Dataset Creation: Sat Aug 23 01:44:28 2014
 Charted by: Depth in Feet scaled 1:240

0	Gamma Ray	150	0.2	Deep Resistivity	2000		LSPD
-200	SP (mV)	0	0.2	Medium Resistivity	2000		
-160	RxoRt	40	0.2	Shallow Resistivity	2000		
			15000	Line Tension			0





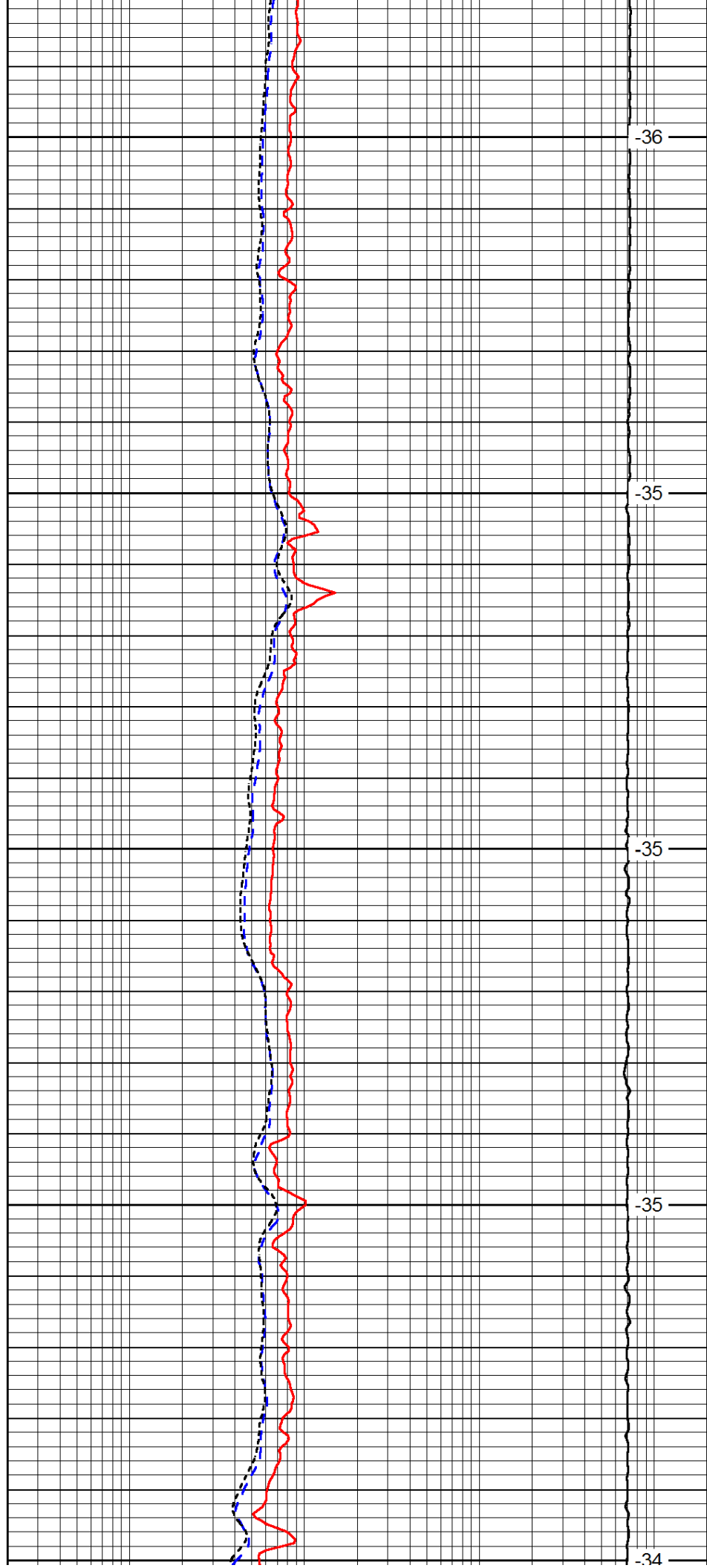
3950

4000

4050

4100

4150



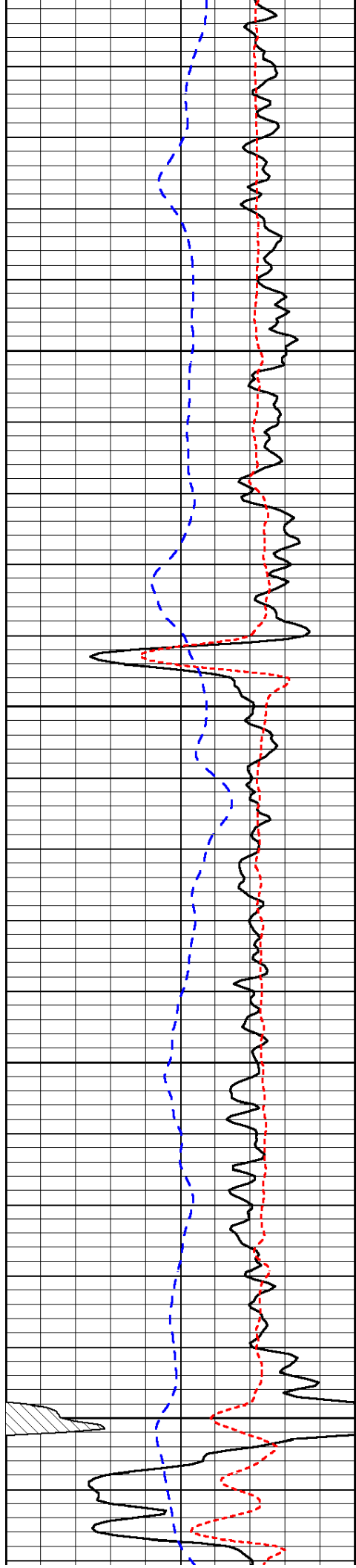
-36

-35

-35

-35

-34

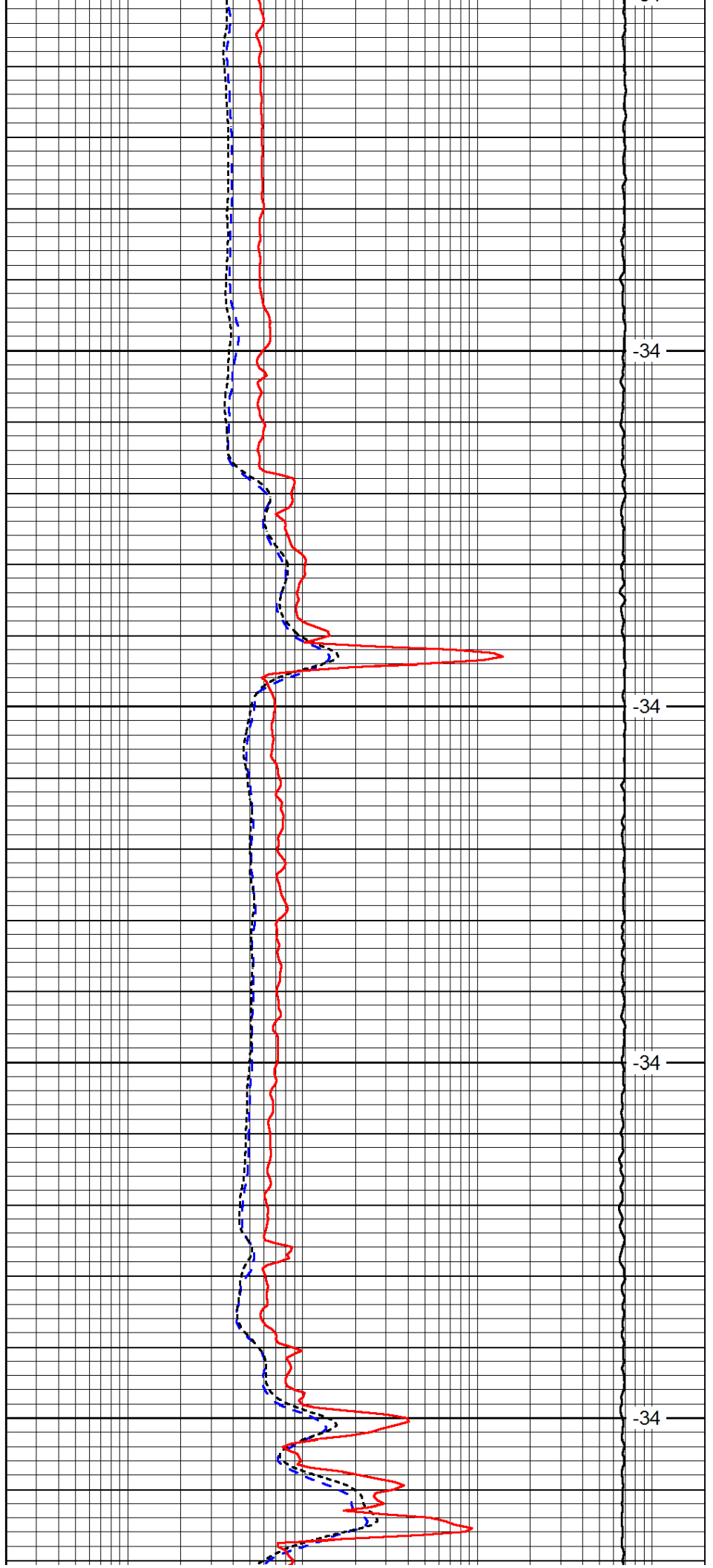


4200

4250

4300

4350

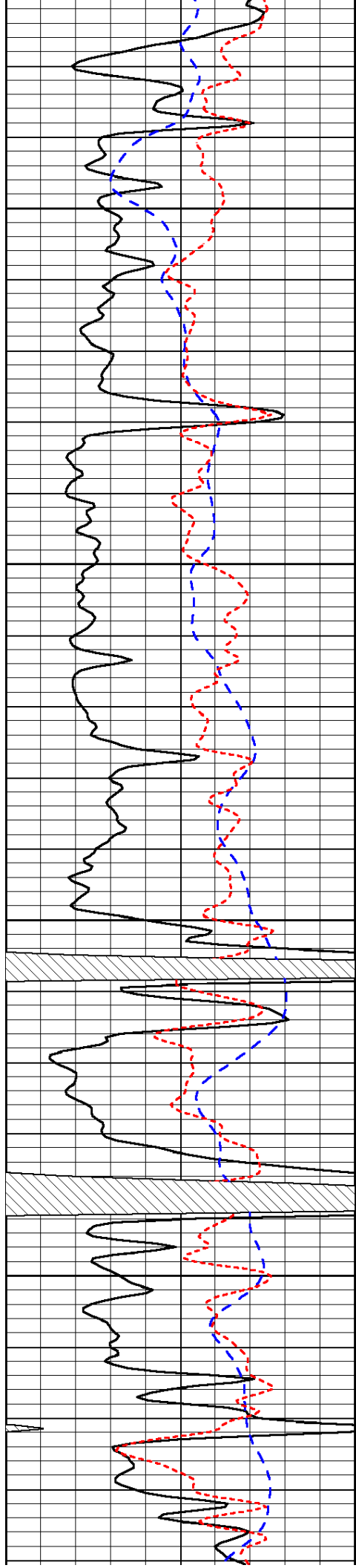


4200

4250

4300

4350

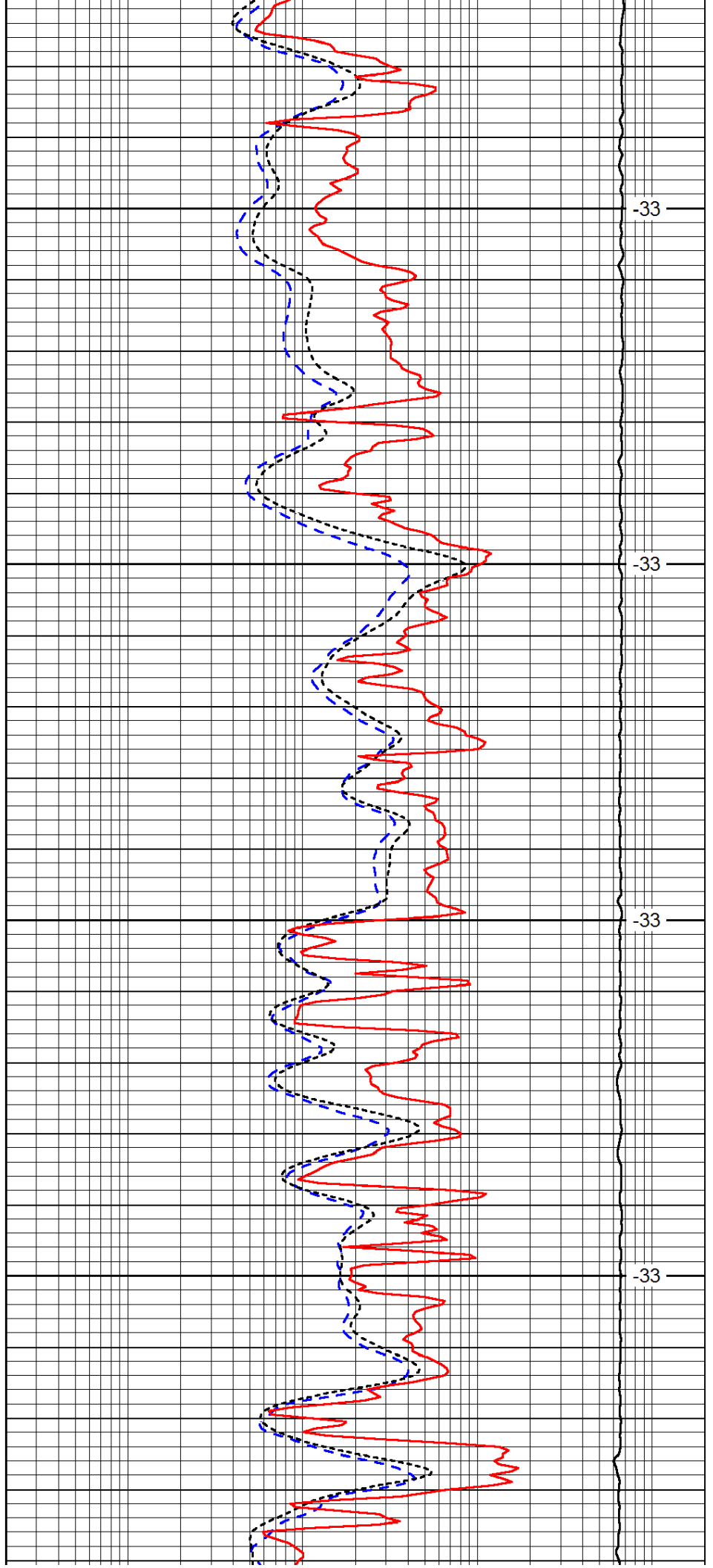


4400

4450

4500

4550

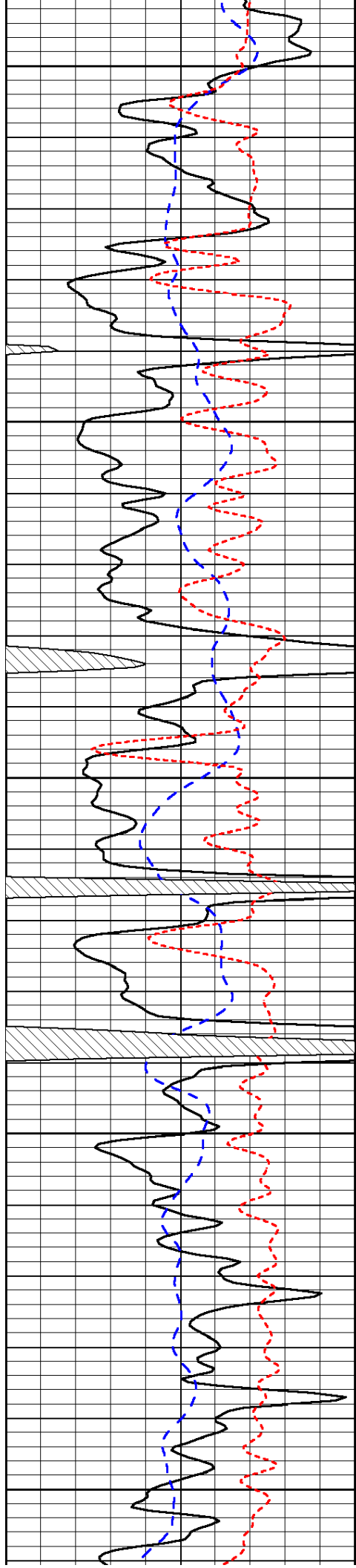


-33

-33

-33

-33



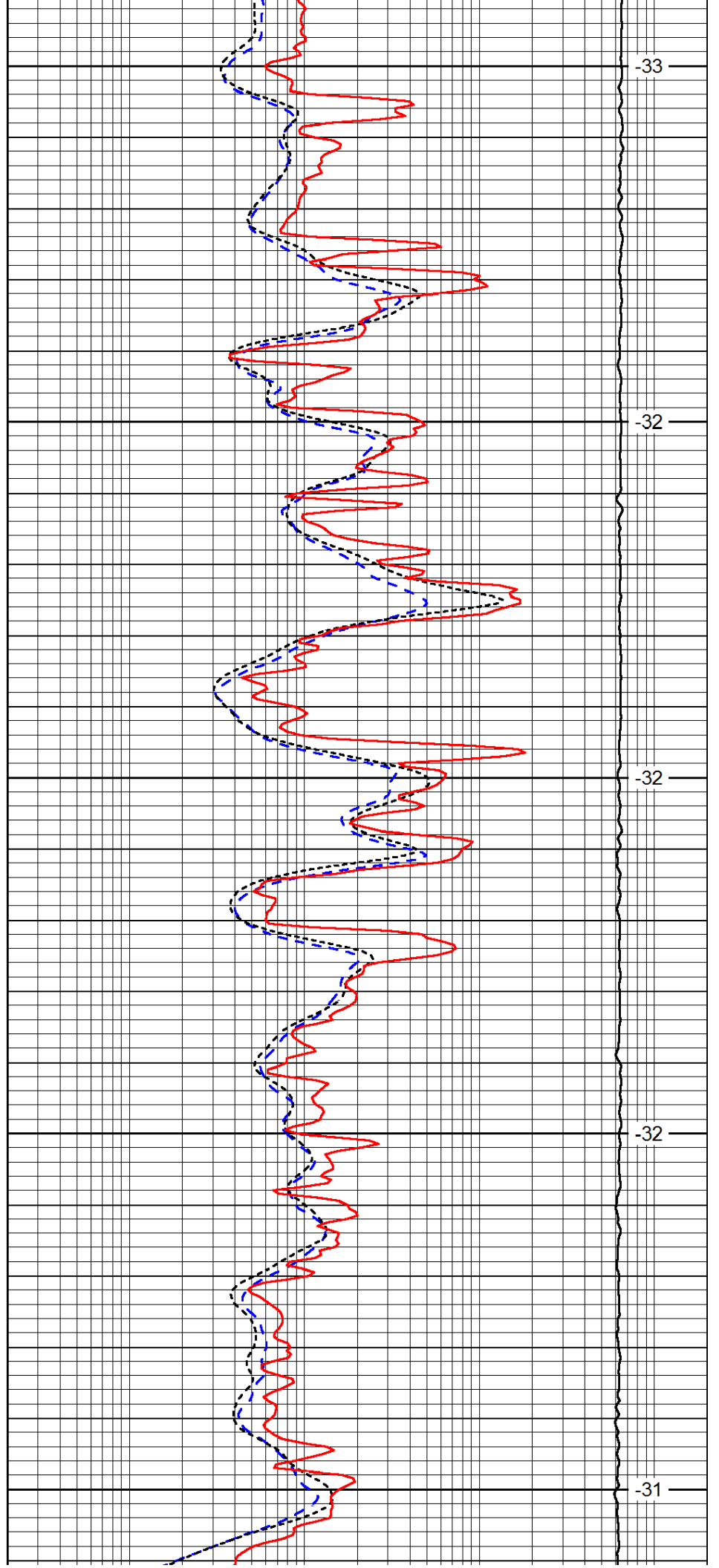
4600

4650

4700

4750

4800



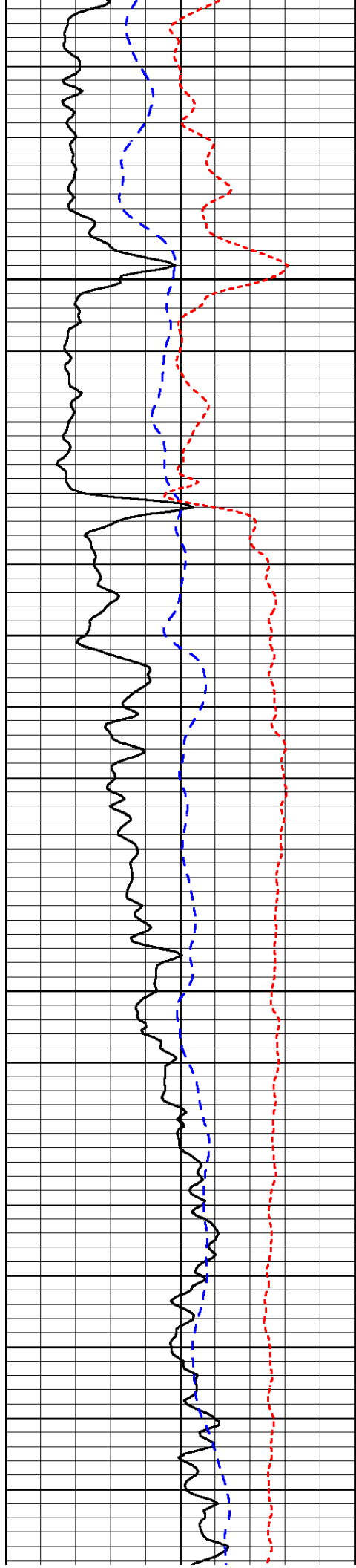
-33

-32

-32

-32

-31

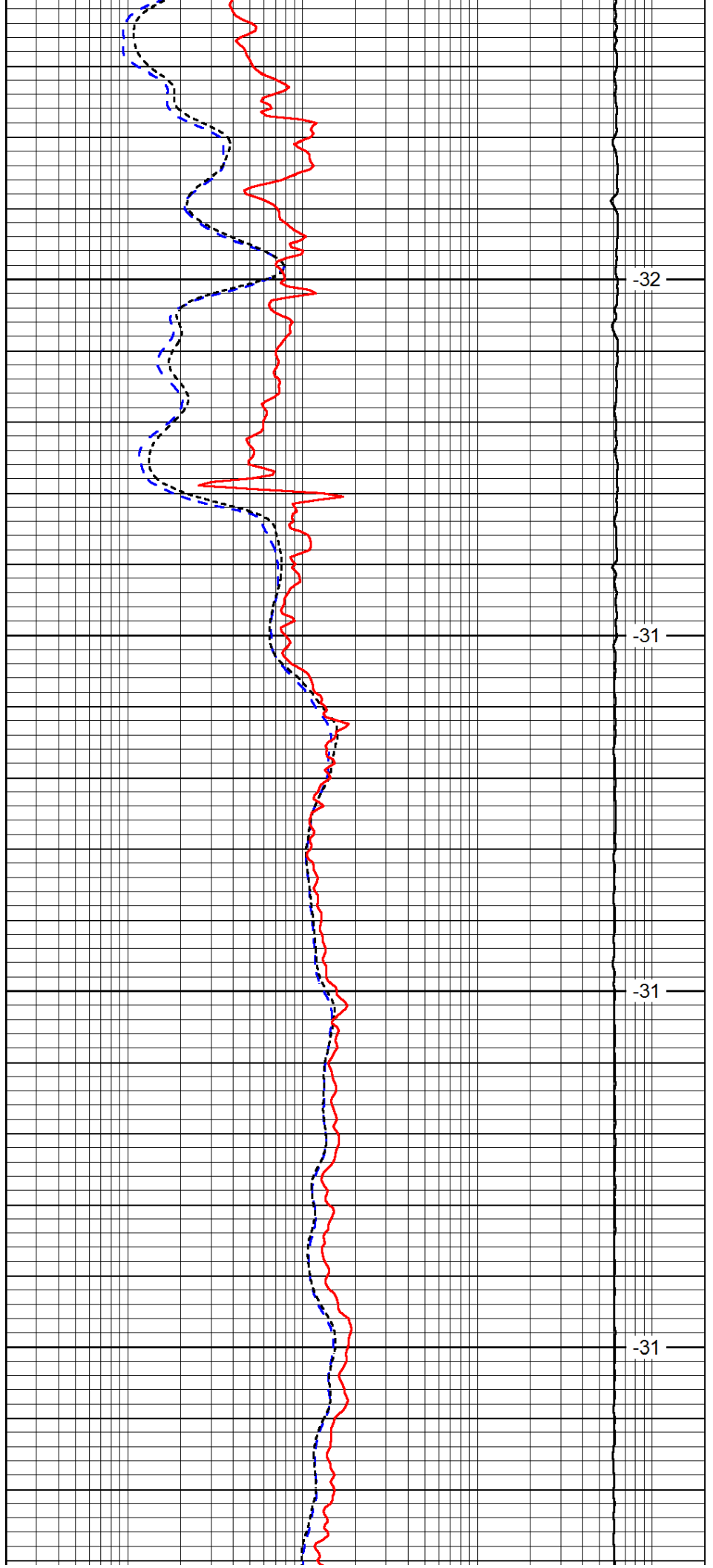


4850

4900

4950

5000

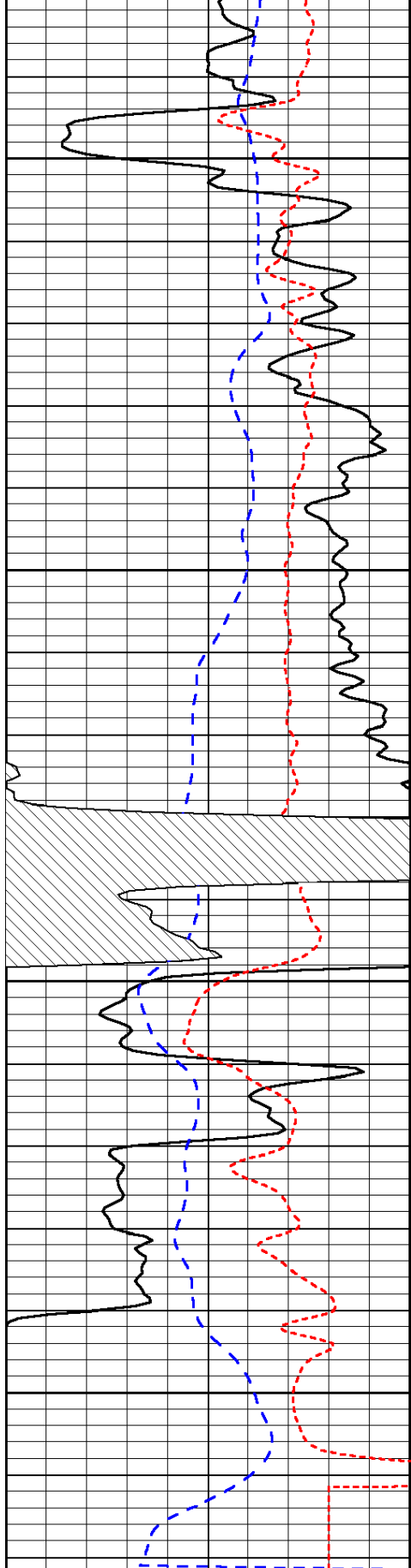


-32

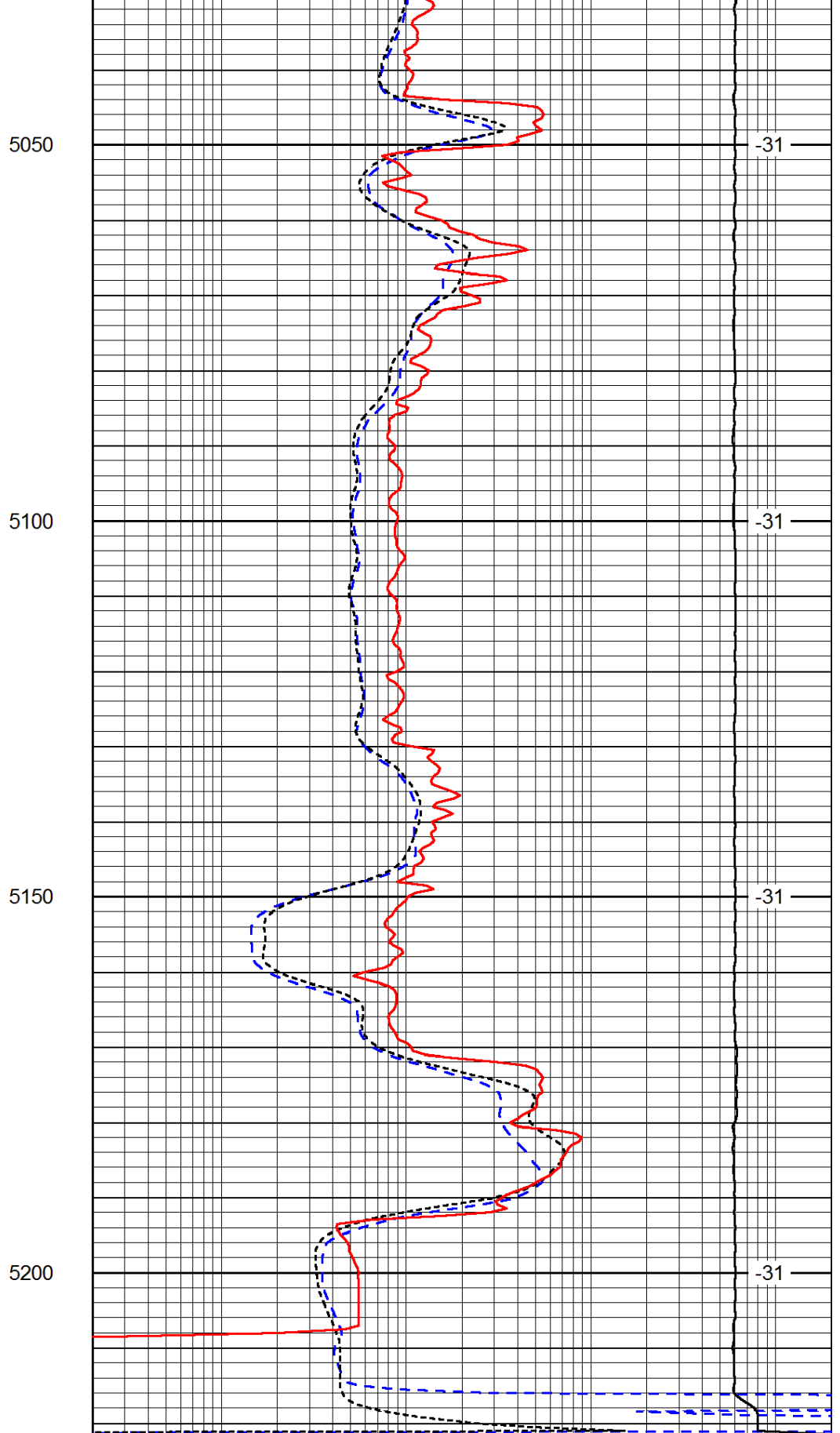
-31

-31

-31



0	Gamma Ray	150
-200	SP (mV)	0
-160	RxoRt	40



0.2	Deep Resistivity	2000
0.2	Medium Resistivity	2000
0.2	Shallow Resistivity	2000
15000	Line Tension	0

LSPD