



Pioneer Energy Services

Dual Compensated Porosity Log

15-007-24,209-00-00

API No.

Company **Indian Oil Company**
 Well **Yates #1**
 Field **Stranathan Pool**
 County **Barber** State **Kansas**

Location **SW NW NE NW**
517' FNL & 1573' FWL
 Sec: **13** Twp: **35S** Rge: **12W**

Permanent Datum **Ground Level** Elevation **1340**
 Log Measured From **Kelly Bushing** **11 Ft. Above Perm. Datum**
 Drilling Measured From **Kelly Bushing**

Other Services
DIL
 Elevation
 K.B. **1351**
 D.F. **1340**
 G.L. **1340**

Date	8/23/2014	
Run Number	One	
Type Log	CNL / CDL	
Depth Driller	5213	
Depth Logger	5216	
Bottom Logged Interval	5195	
Top Logged Interval	3800	
Type Fluid In Hole	Chemical	
Salinity, PPM CL	5,000	
Density Level	9.1	
Level	Full	
Max. Rec. Temp. F	128	
Operating Rig Time	3 Hours	
Equipment -- Location	10 Hays	
Recorded By	C. Desaire	
Witnessed By	Scott Alberg	

Borehole Record

Casing Record

Run No.	Bit	From	To	Size	Wgt.	From	To
1	12.25	00	928	8.625	24#	00	928
2	7.875	928	5213				

<<< Fold Here >>>

All interpretations are opinions based on inferences from electrical or other measurements and we cannot and do not guarantee the accuracy or correctness of any interpretation, and we shall not, except in the case of gross or willful negligence on our part, be liable or responsible for any loss, costs, damages, or expenses incurred or sustained by anyone resulting from any interpretation made by any of our officers, agents or employees. These interpretations are also subject to our general terms and conditions set out in our current Price Schedule.

Comments

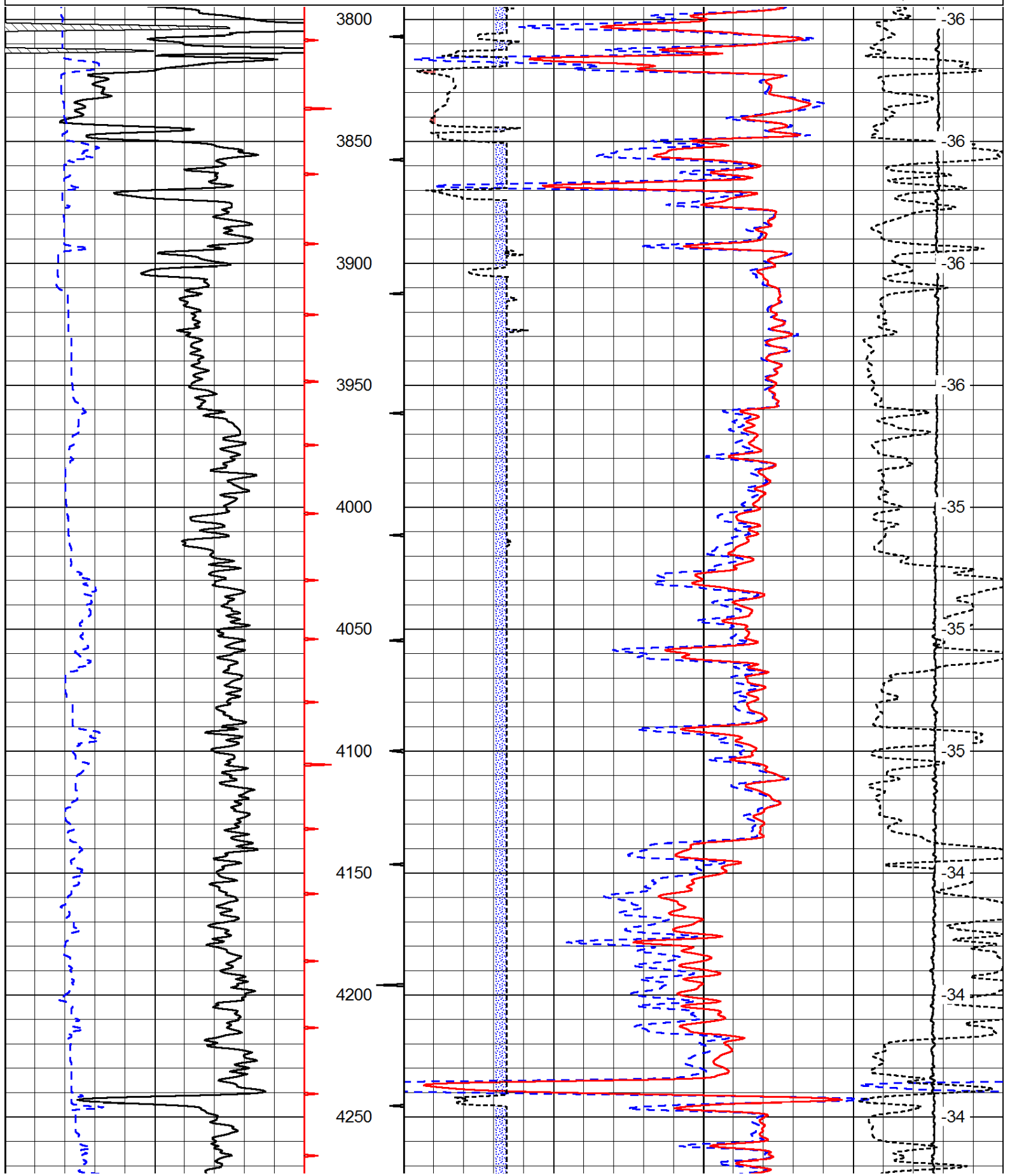
Thank you for using Pioneer Energy Services
www.pioneerenergy.com
 785 625 3858

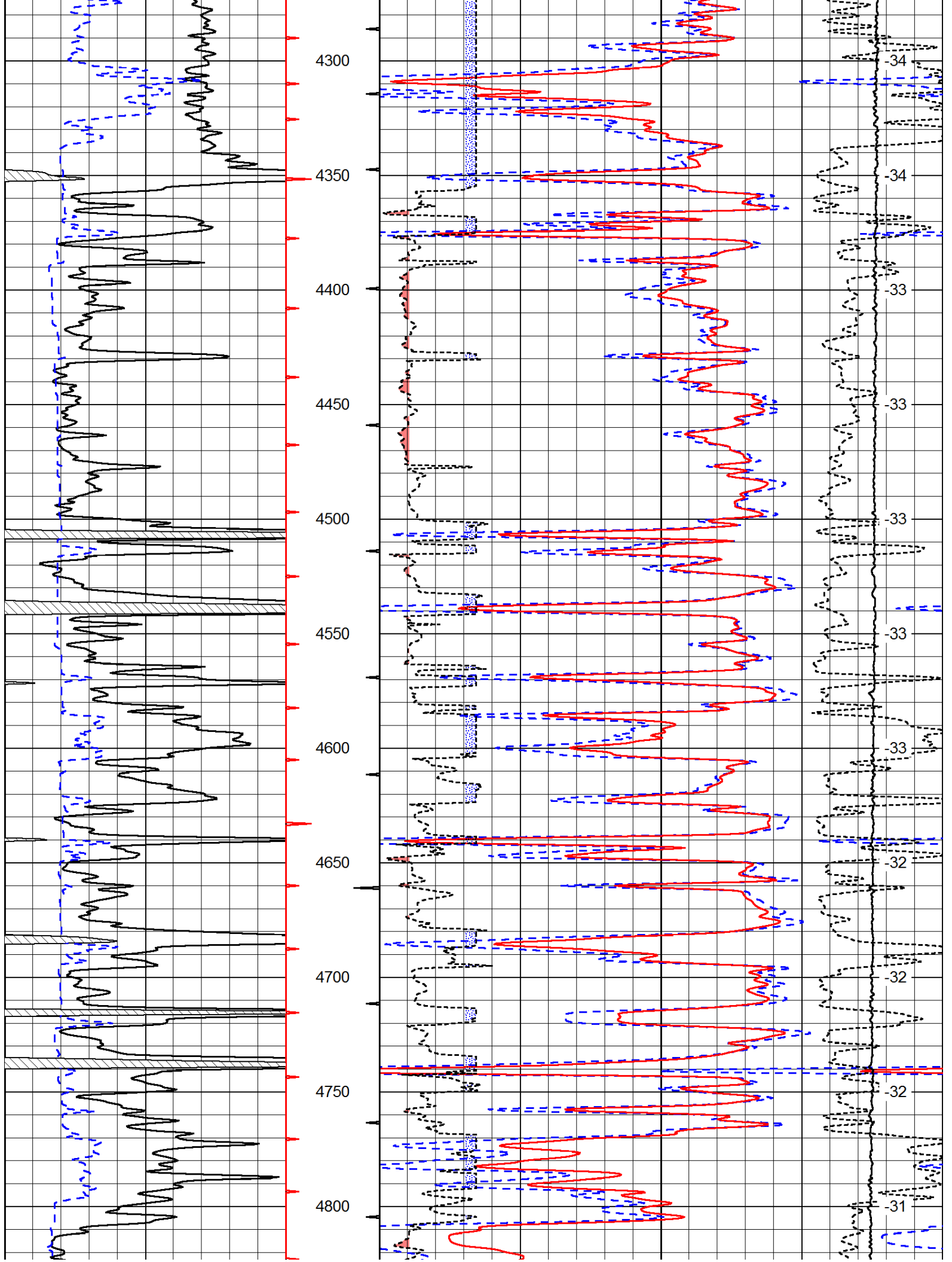
Hardtner KS, E to Stubbs Rd, S to Stateline Rd,
 1 1/4 W, N Into 3/4

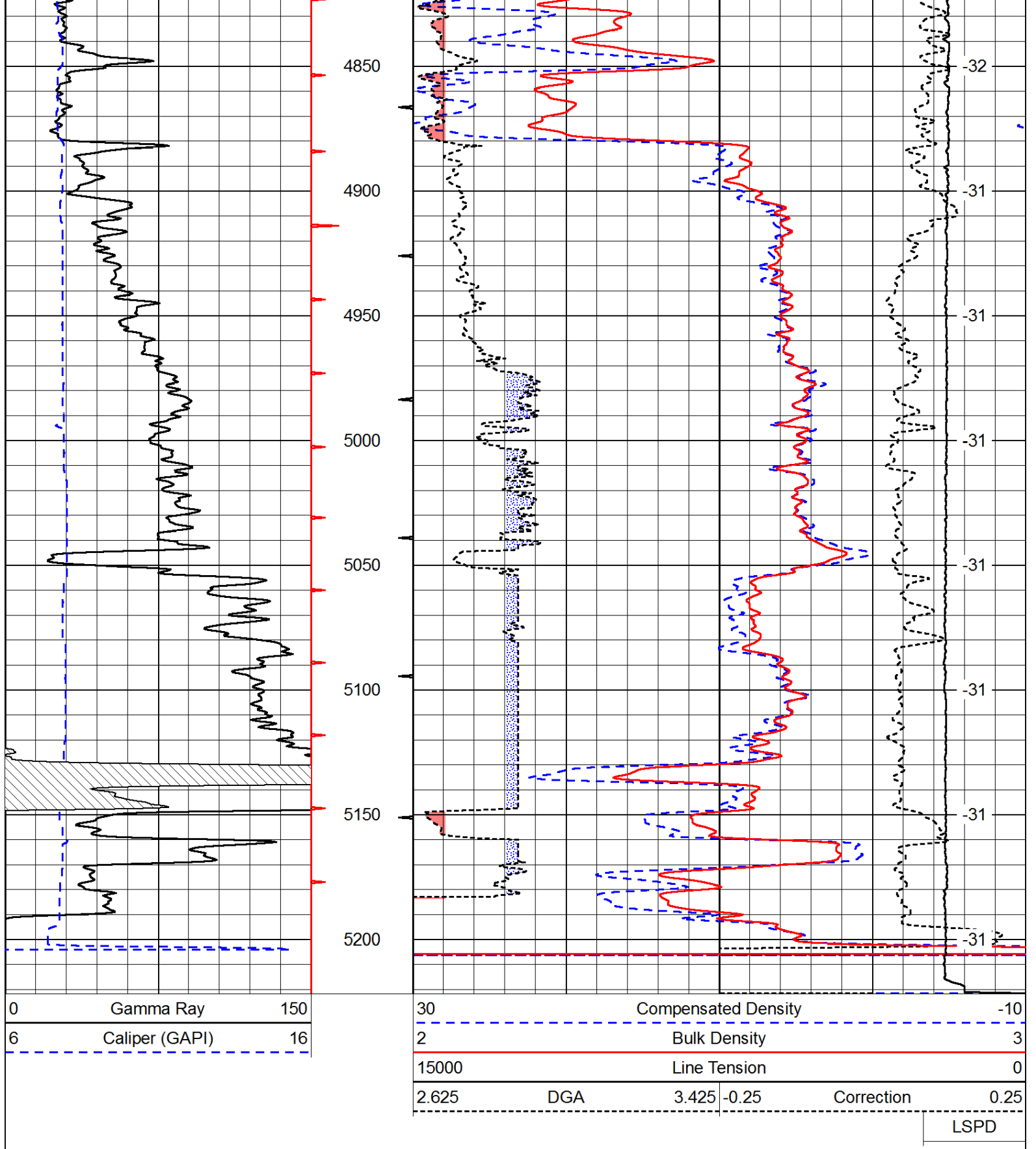
Database File: c:\warrior\data\indian oil_yates #1\indhd.db
 Dataset Pathname: dil/indstk
 Presentation Format: cdl
 Dataset Creation: Sat Aug 23 01:44:28 2014
 Charted by: Depth in Feet scaled 1:600

0	Gamma Ray	150
6	Caliper (GAPI)	16

30	Compensated Density		-10
2	Bulk Density		3
15000	Line Tension		0
2.625	DGA	3.425	-0.25
			Correction
			LSPD







Database File: c:\warrior\data\indian oil_yates #1\indhd.db
 Dataset Pathname: dil/indstk
 Presentation Format: cndlspec
 Dataset Creation: Sat Aug 23 01:44:28 2014
 Charted by: Depth in Feet scaled 1:240

0	Gamma Ray	150	30	Compensated Neutron (Limestone)	-10
6	Caliper (GAPI)	16	30	Compensated Density (Limestone)	-10

LSPD

