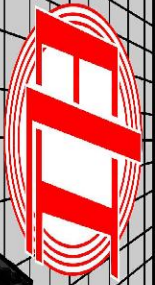


SONIC
LOG



Company DOWNING NELSON OIL COMPANY, INC.
Well FLEMMING #1-24
Field WILDCAT
County CHEYENNE State KANSAS

Location: API #: 15-023-21521-0000
1640' FNL & 990' FEL
SEC 24 TWP 5S RGE 37W
Permanent Datum GROUND LEVEL Elevation 3299
Log Measured From KELLY BUSHING 8' A.G.L
Drilling Measured From KELLY BUSHING
Other Services
CDL/CNL
DIL/MEL
Elevation
K.B. 3307
D.F. 3305
G.L. 3299

Date	10/6/19		
Run Number	TWO		
Depth Driller	4940		
Depth Logger	4941		
Bottom Logged Interval	4931		
Top Log Interval	450		
Casing Driller	8 5/8" @ 474'		
Casing Logger	474'		
Bit Size	7 7/8		
Type Fluid in Hole	CHEMICAL MUD	CHLORIDES 5000 PPM	
Density / Viscosity	8.9/56		
pH / Fluid Loss	10.0/7.2		
Source of Sample	FLOWLINE		
Rm @ Meas. Temp	1.30 @ 76F		
Rmf @ Meas. Temp	0.97 @ 76F		
Rmc @ Meas. Temp	1.56 @ 76F		
Source of Rmf / Rmc	MEASUREMENT		
Rm @ BHT	0.79 @ 124F		
Time Circulation Stopped	2 HOURS		
Time Logger on Bottom	////		
Maximum Recorded Temperature	124F		
Equipment Number	3802		
Location	HAYS, KANSAS		
Recorded By	JASON CAPPELLUCCI		
Witnessed By	MARC DOWNING		

<<< Fold Here >>>

All interpretations are opinions based on inferences from electrical or other measurements and we cannot and do not guarantee the accuracy or correctness of any interpretation, and we shall not, except in the case of gross or willful negligence on our part, be liable or responsible for any loss, costs, damages, or expenses incurred or sustained by anyone resulting from any interpretation made by any of our officers, agents or employees. These interpretations are also subject to our general terms and conditions set out in our current Price Schedule.

Comments

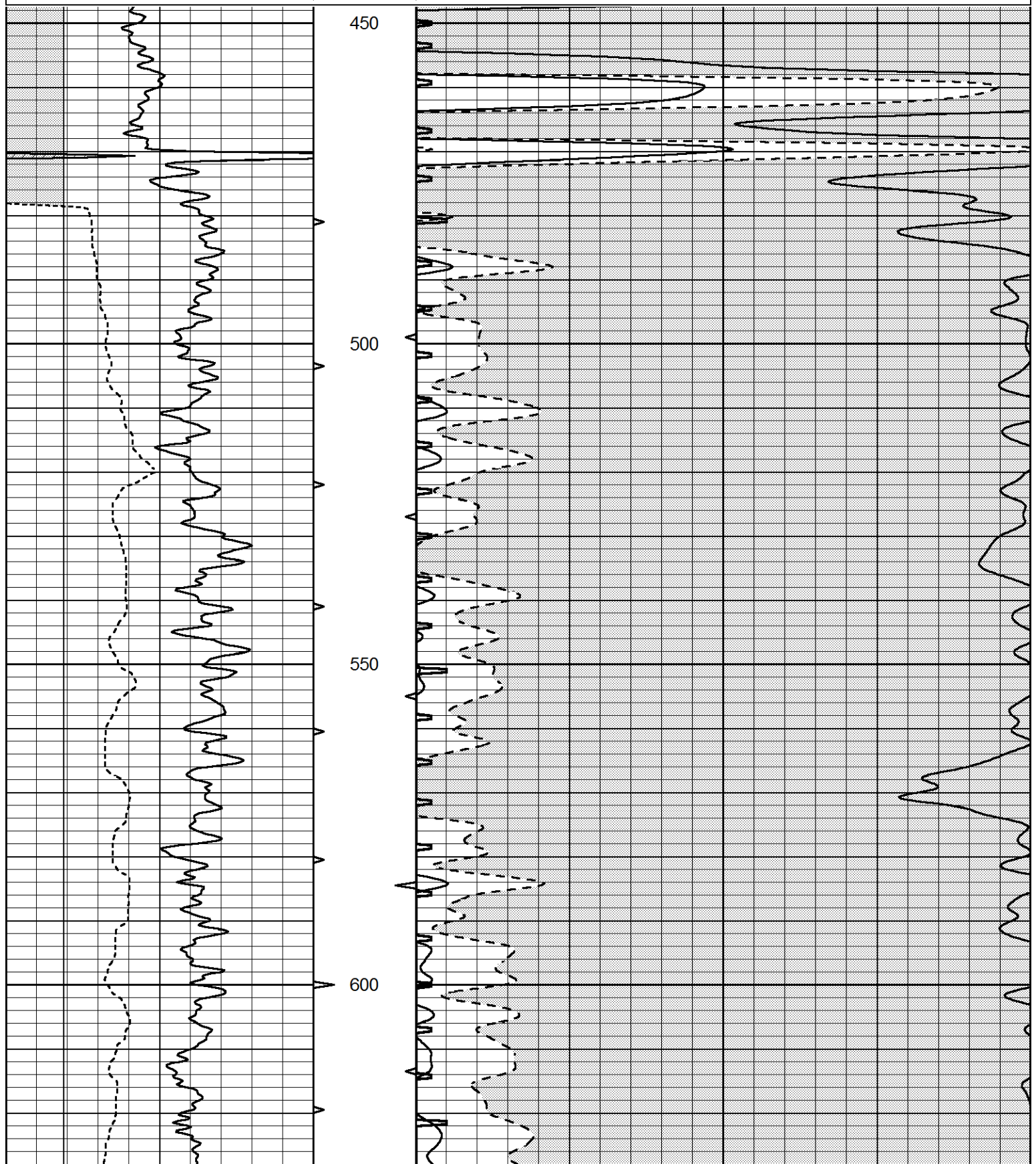
THANK YOU FOR USING ELI WIRELINE SERVICES, HAYS, KS. (785) 628-6395
DIRECTIONS
BREWSTER, KS. - 16 NORTH TO THE T - WEST TO RD. 34 - NORTH 3 MILES
JUST PAST RD. D - EAST INTO

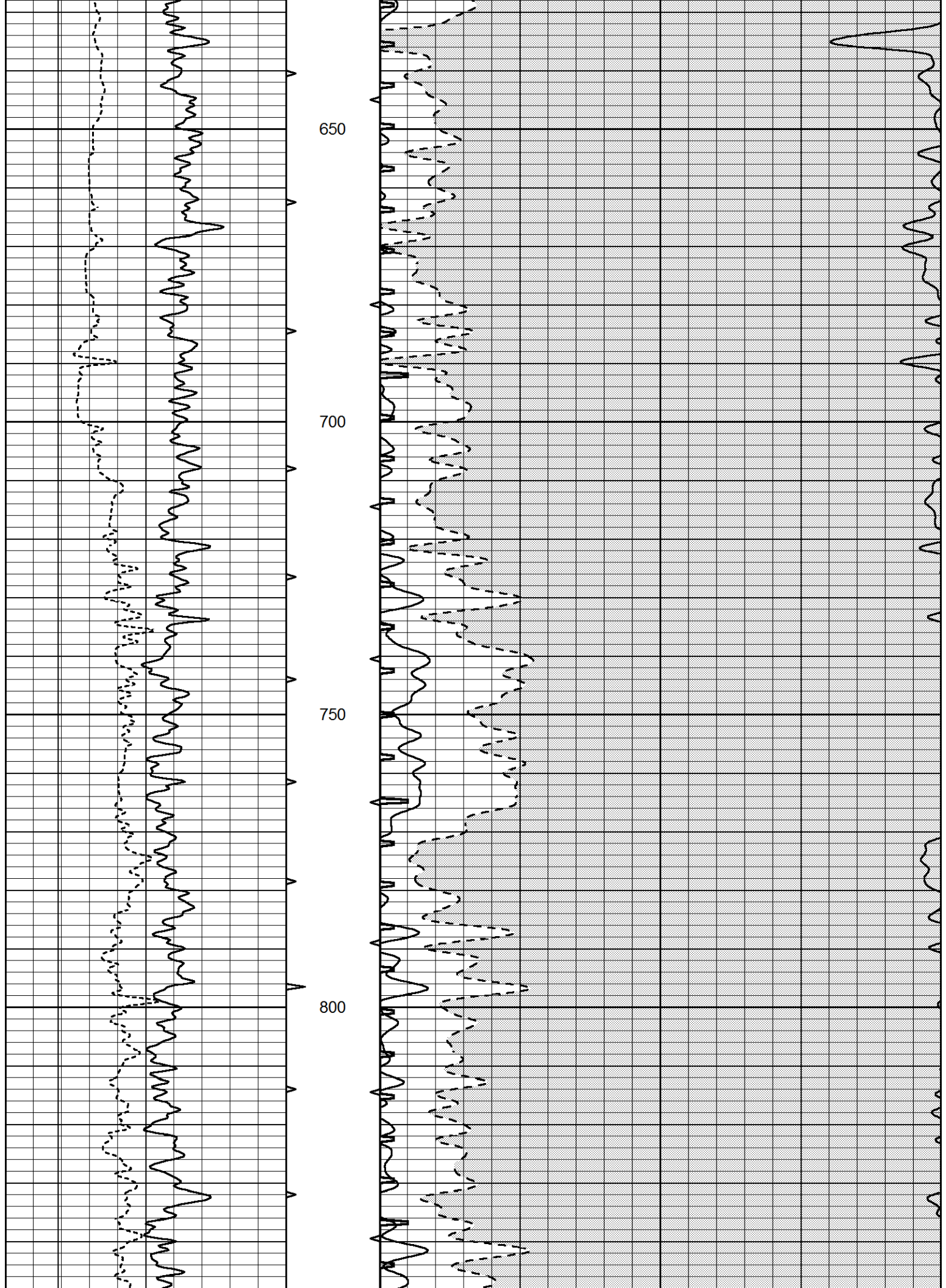


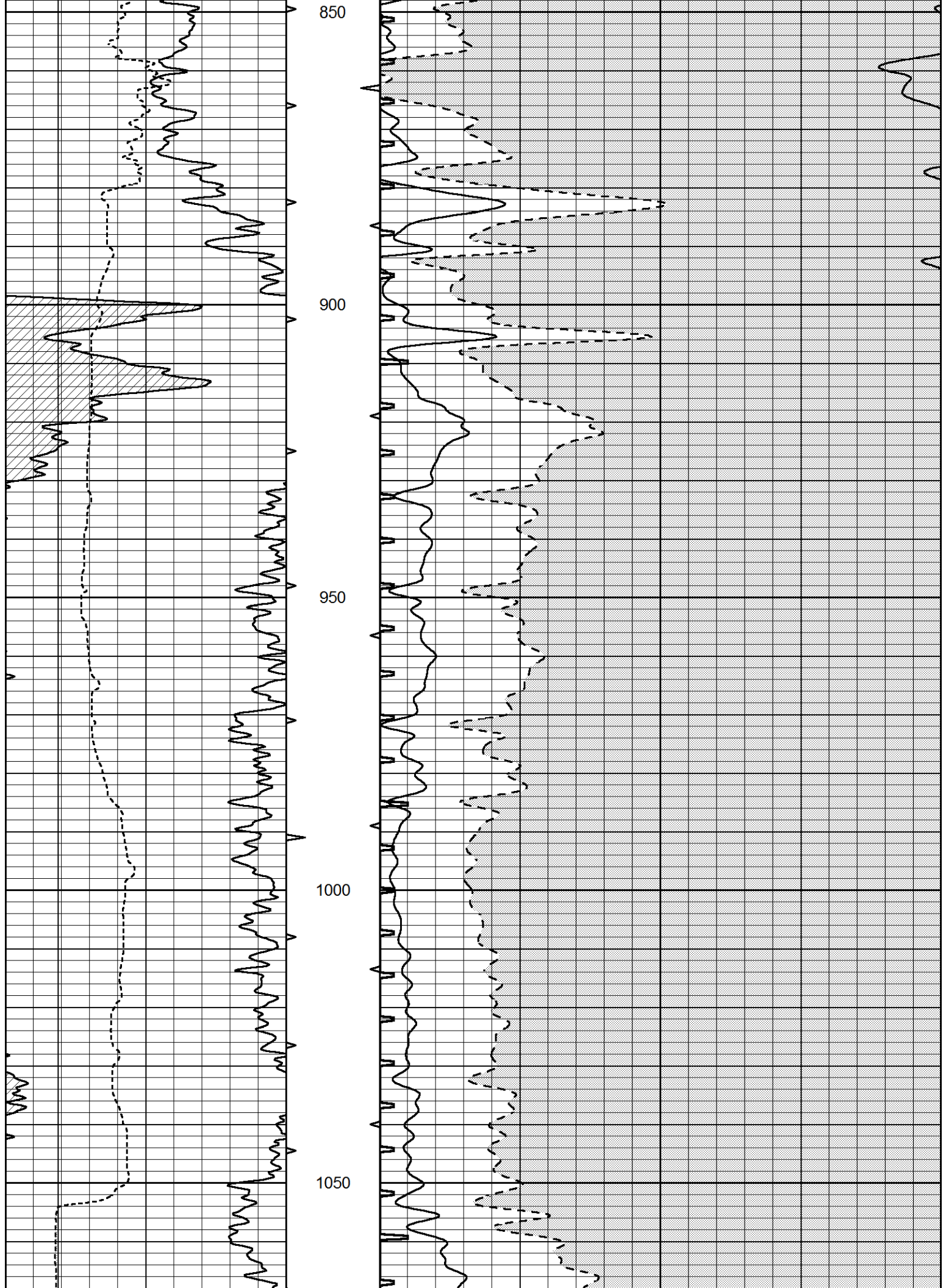
MAIN SECTION

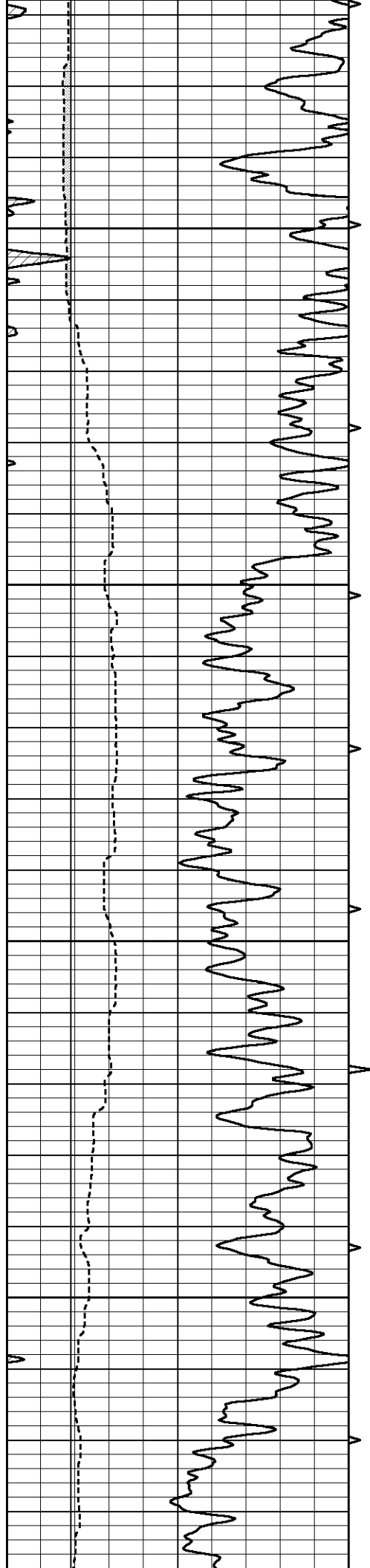
Database File 3997ddn8.db
 Dataset Pathname pass12
 Presentation Format _slt
 Dataset Creation Sun Oct 06 09:35:10 2019
 Charted by Depth in Feet scaled 1:240

0	GAMMA RAY (GAPI)	150	ABHV	140	DELTA TIME (usec/ft)	40	
6	CALIPER (in)	16	10 (ft3)	0	30	SONIC POROSITY (pu)	-10
			TBHV	0	ITT (msec)	20	
			0 (ft3)	10			







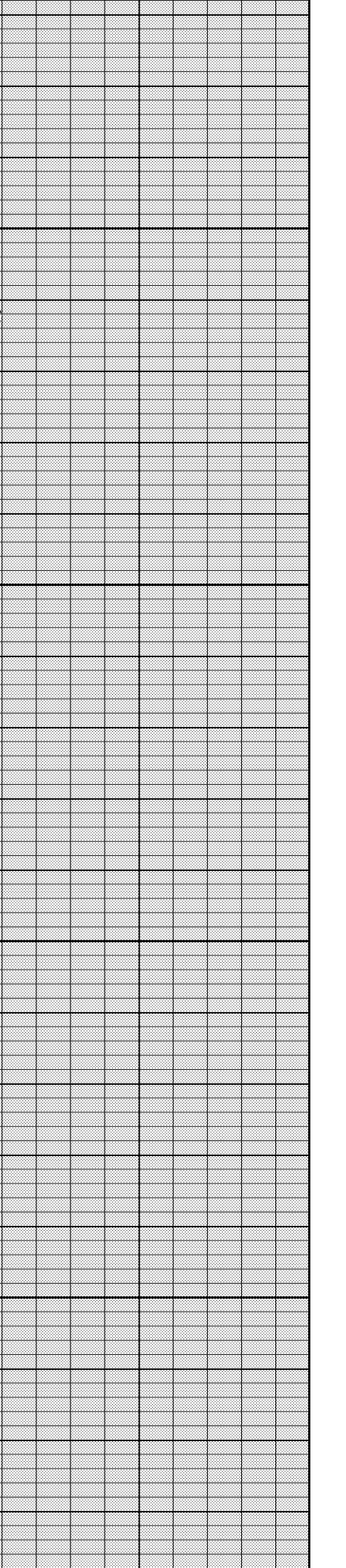
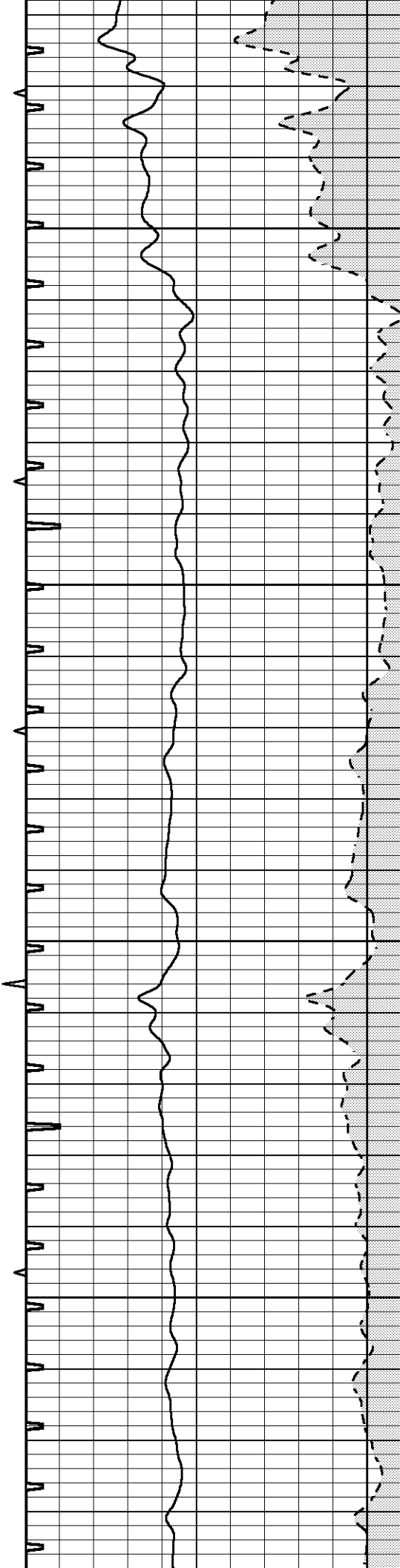


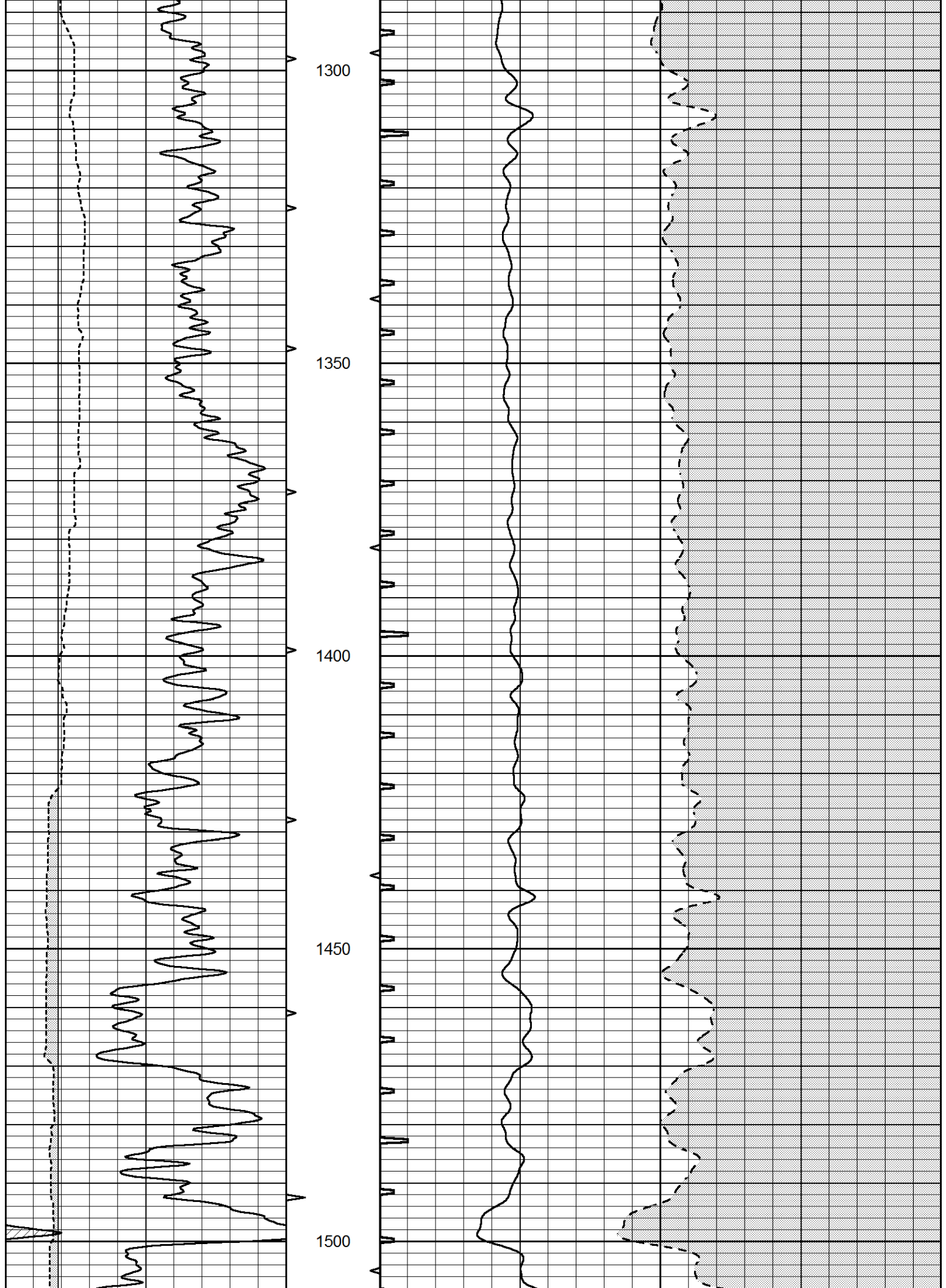
1100

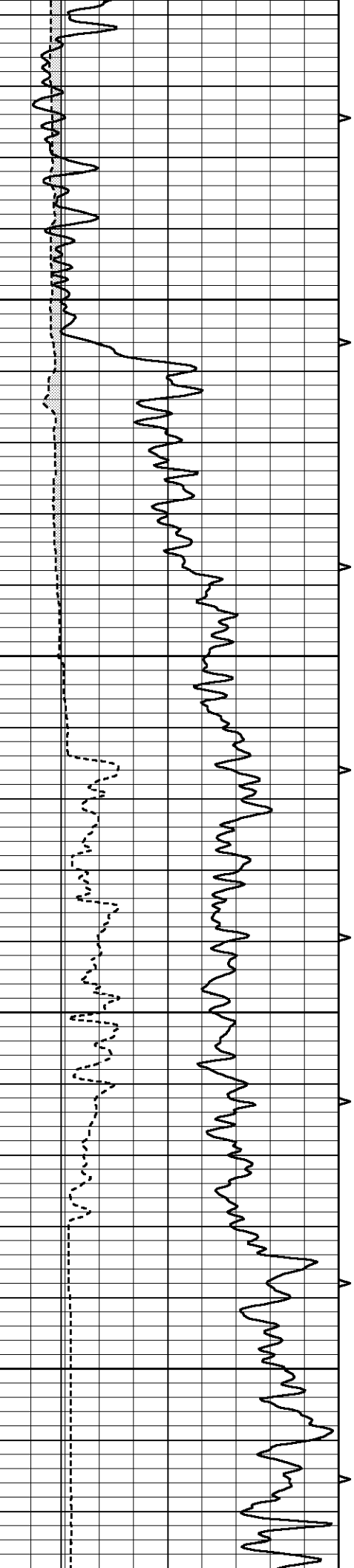
1150

1200

1250





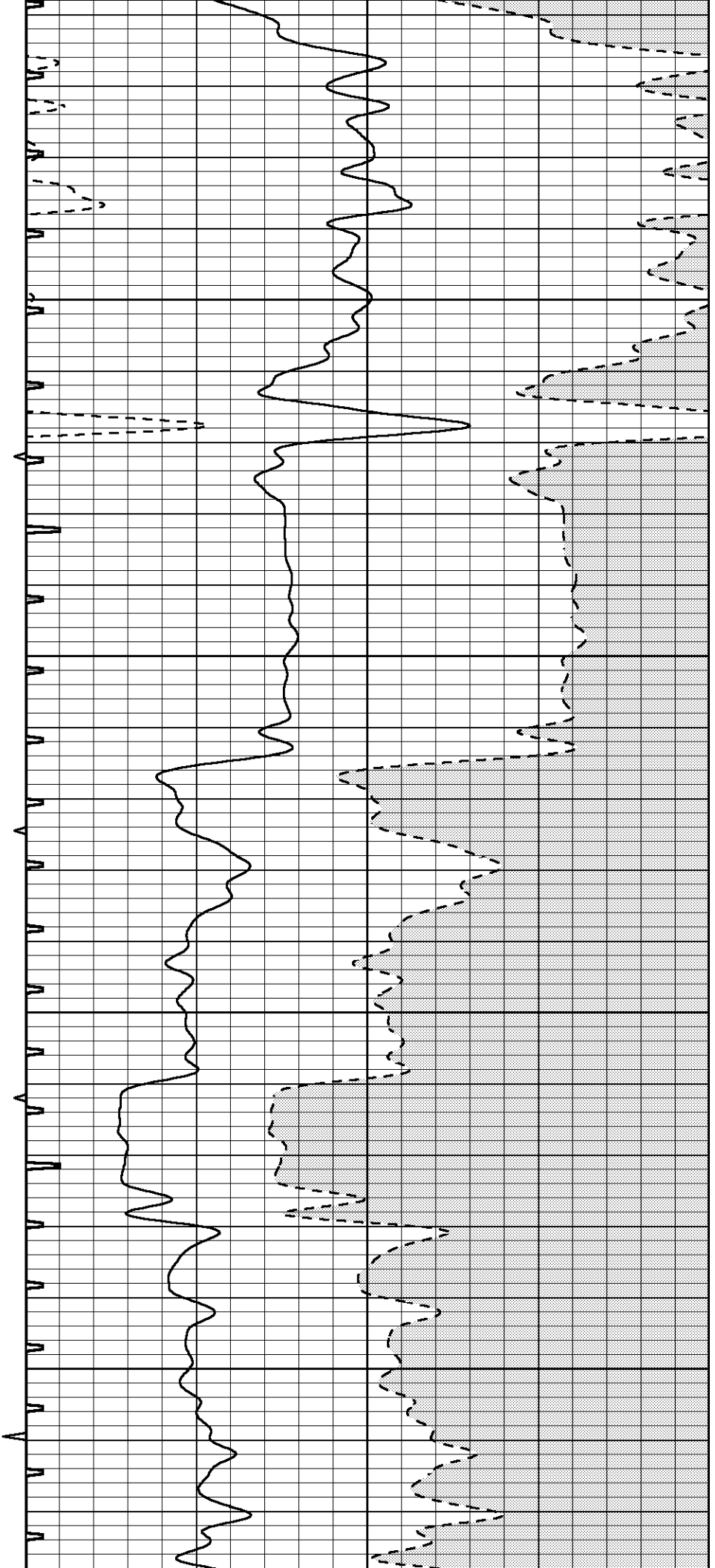


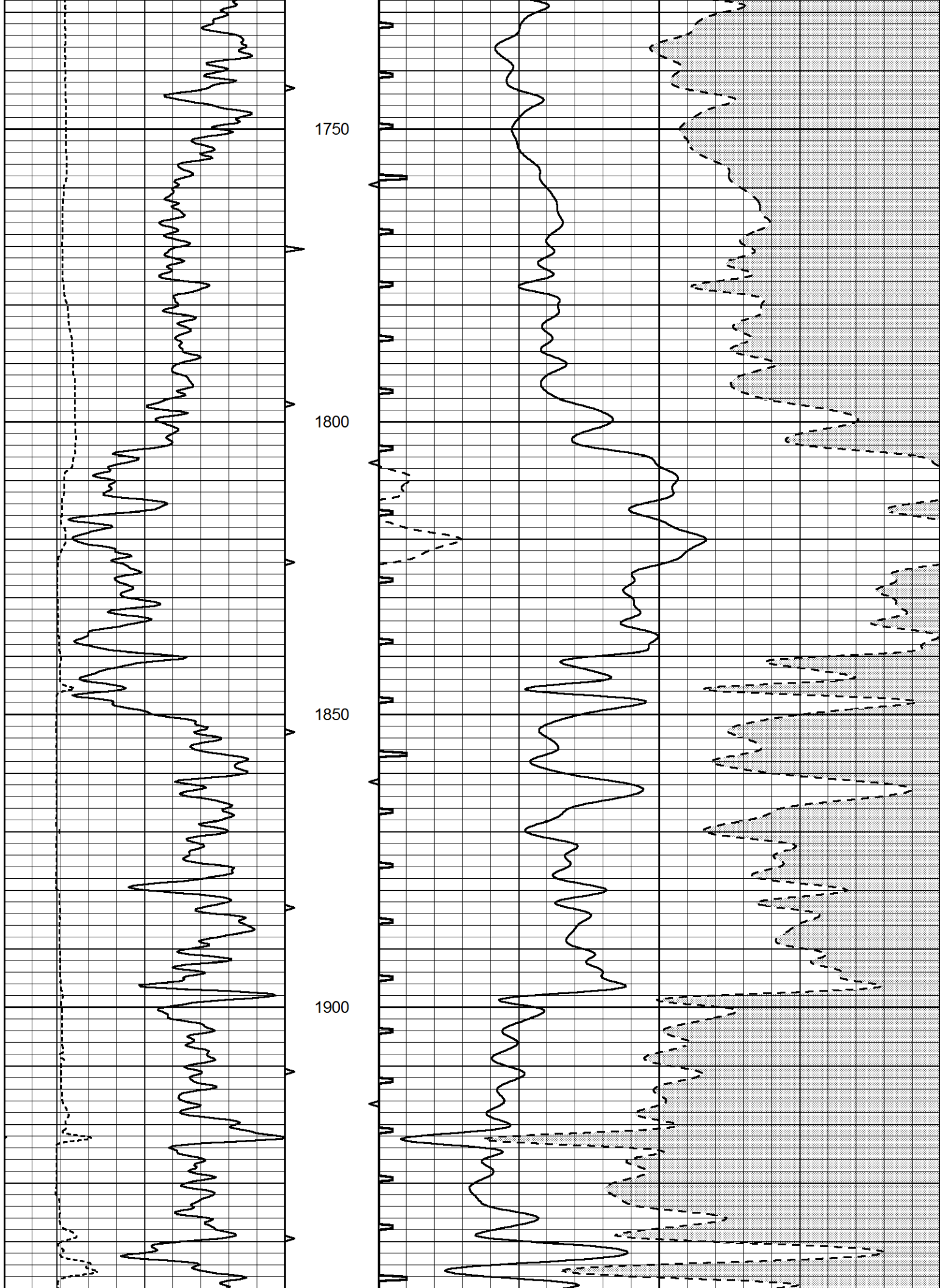
1550

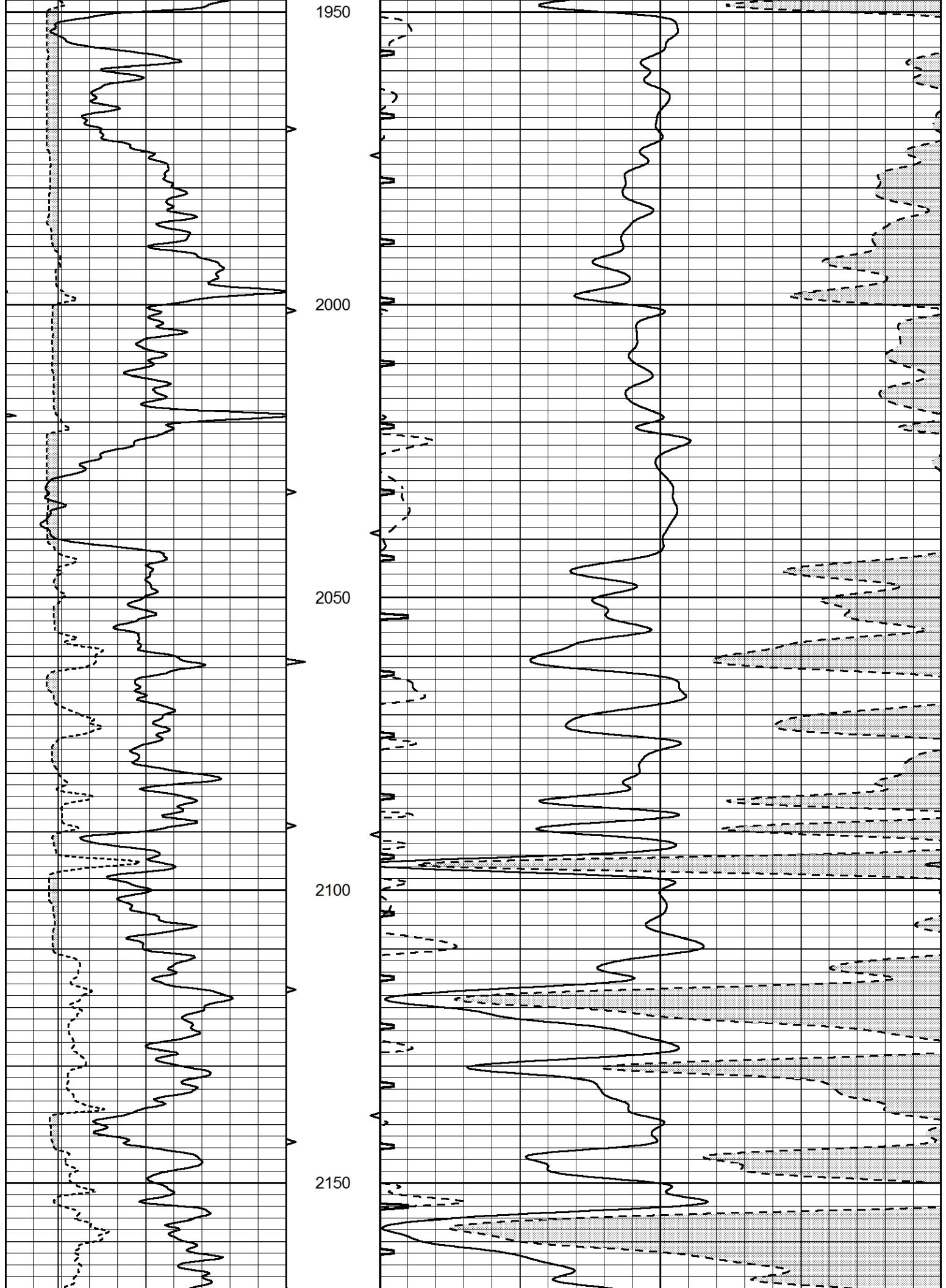
1600

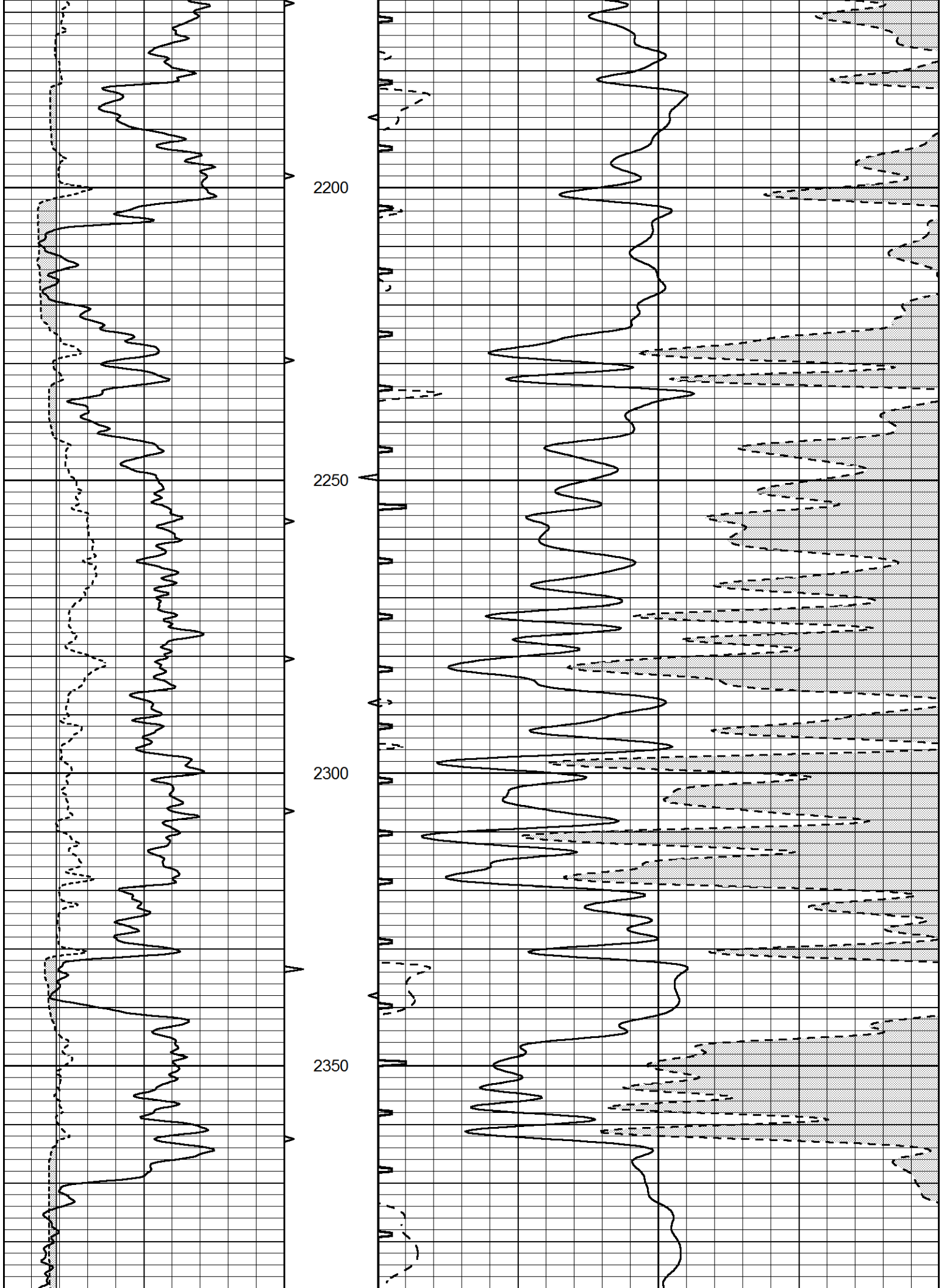
1650

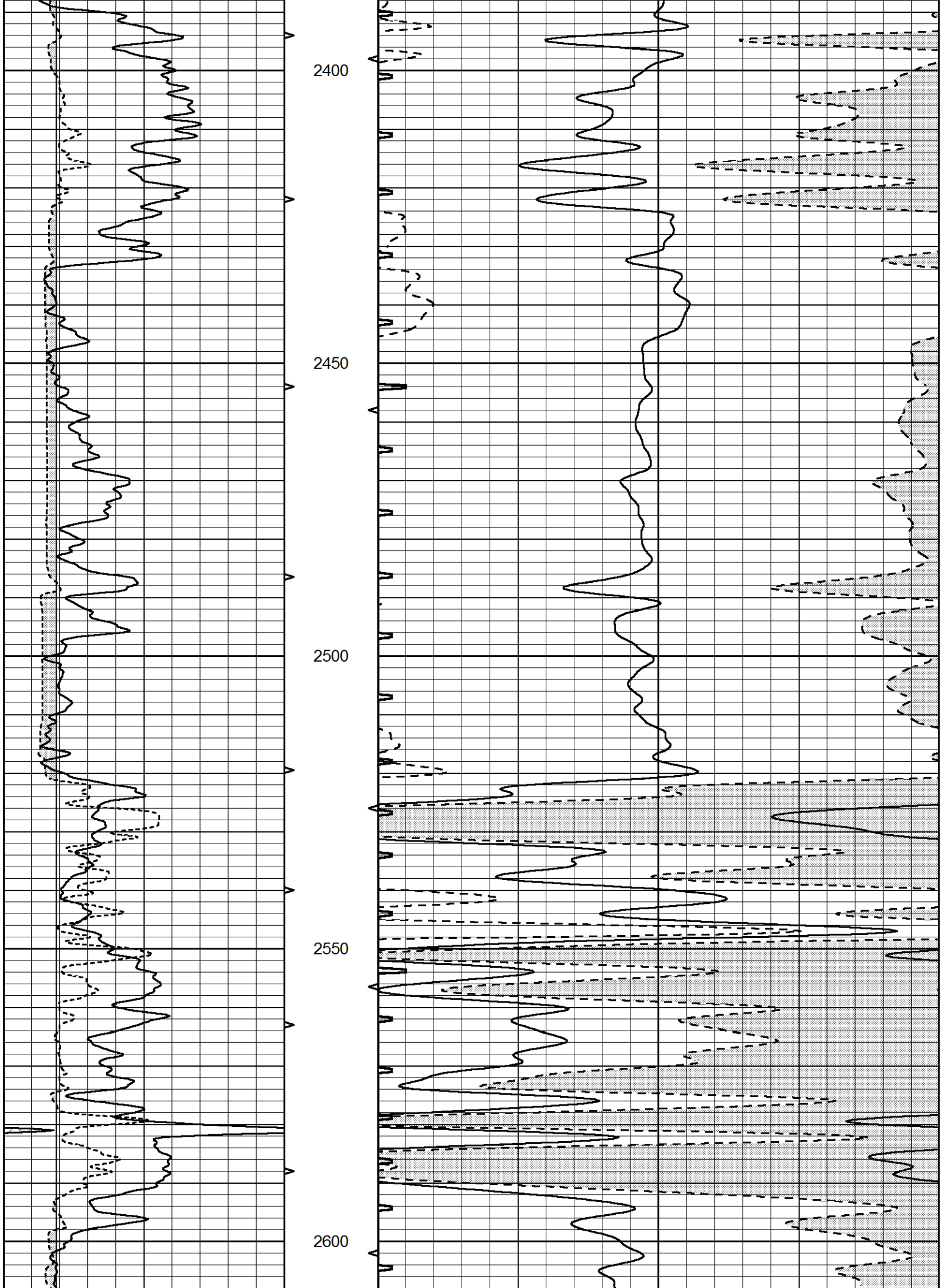
1700

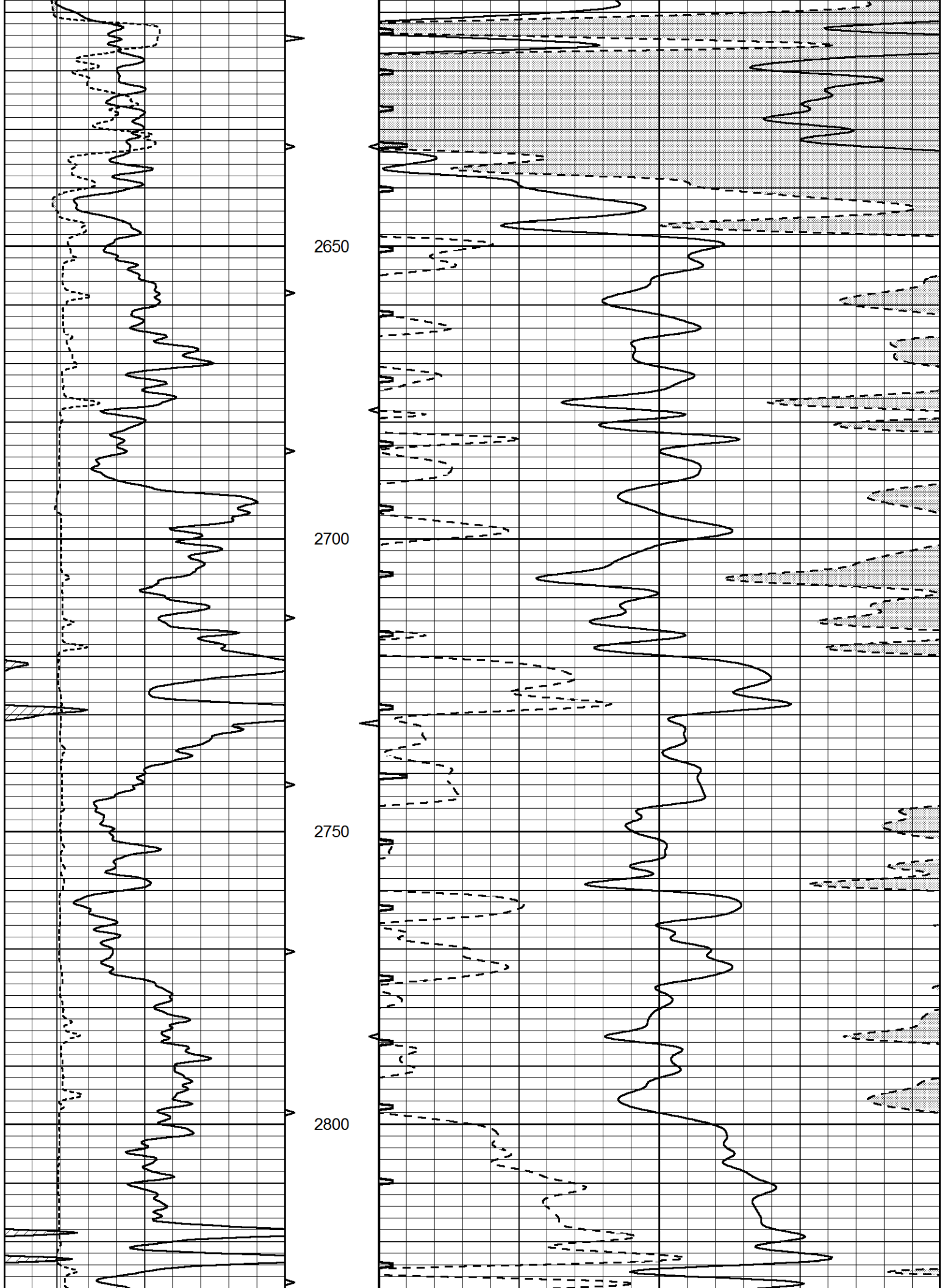


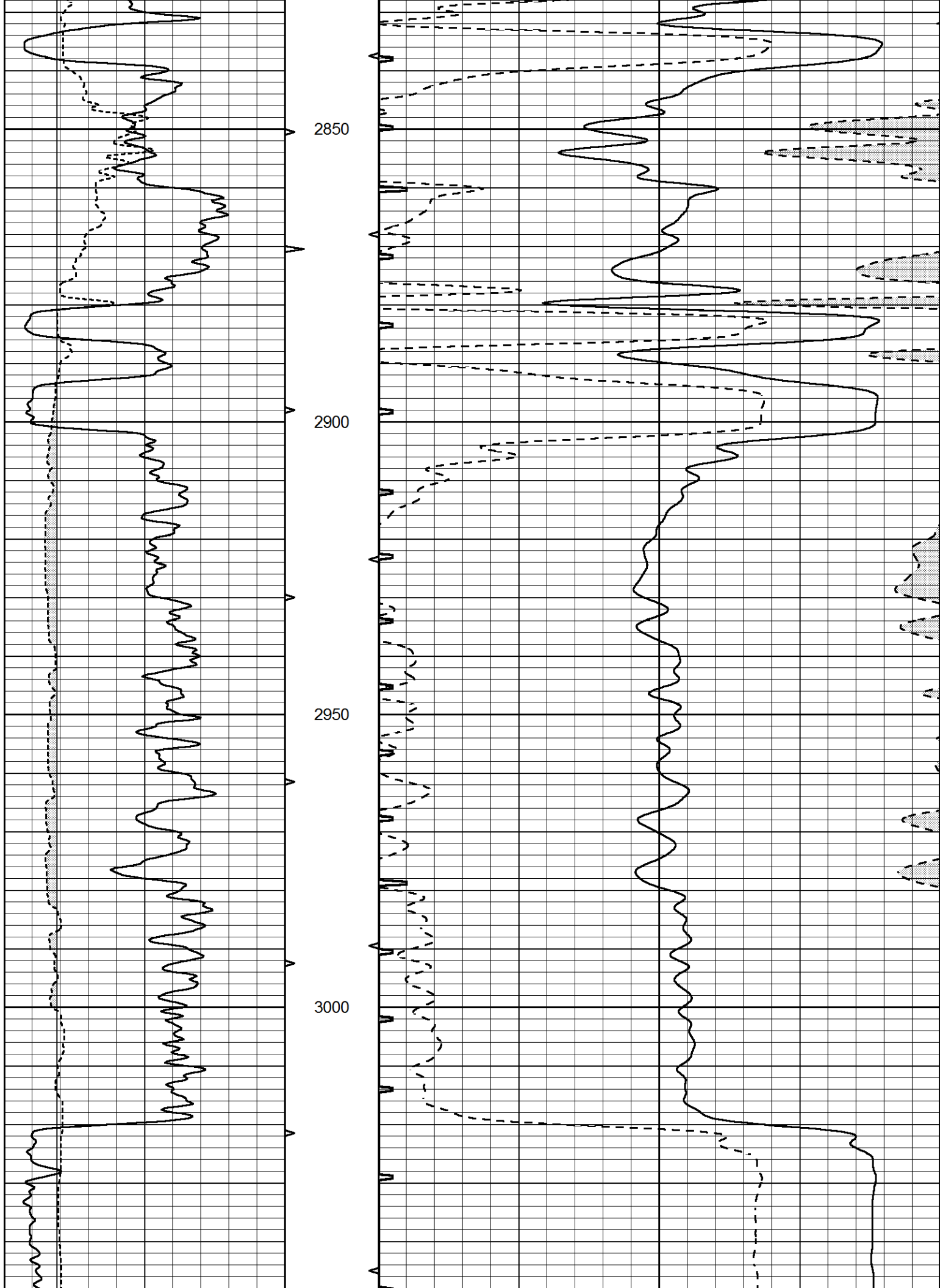


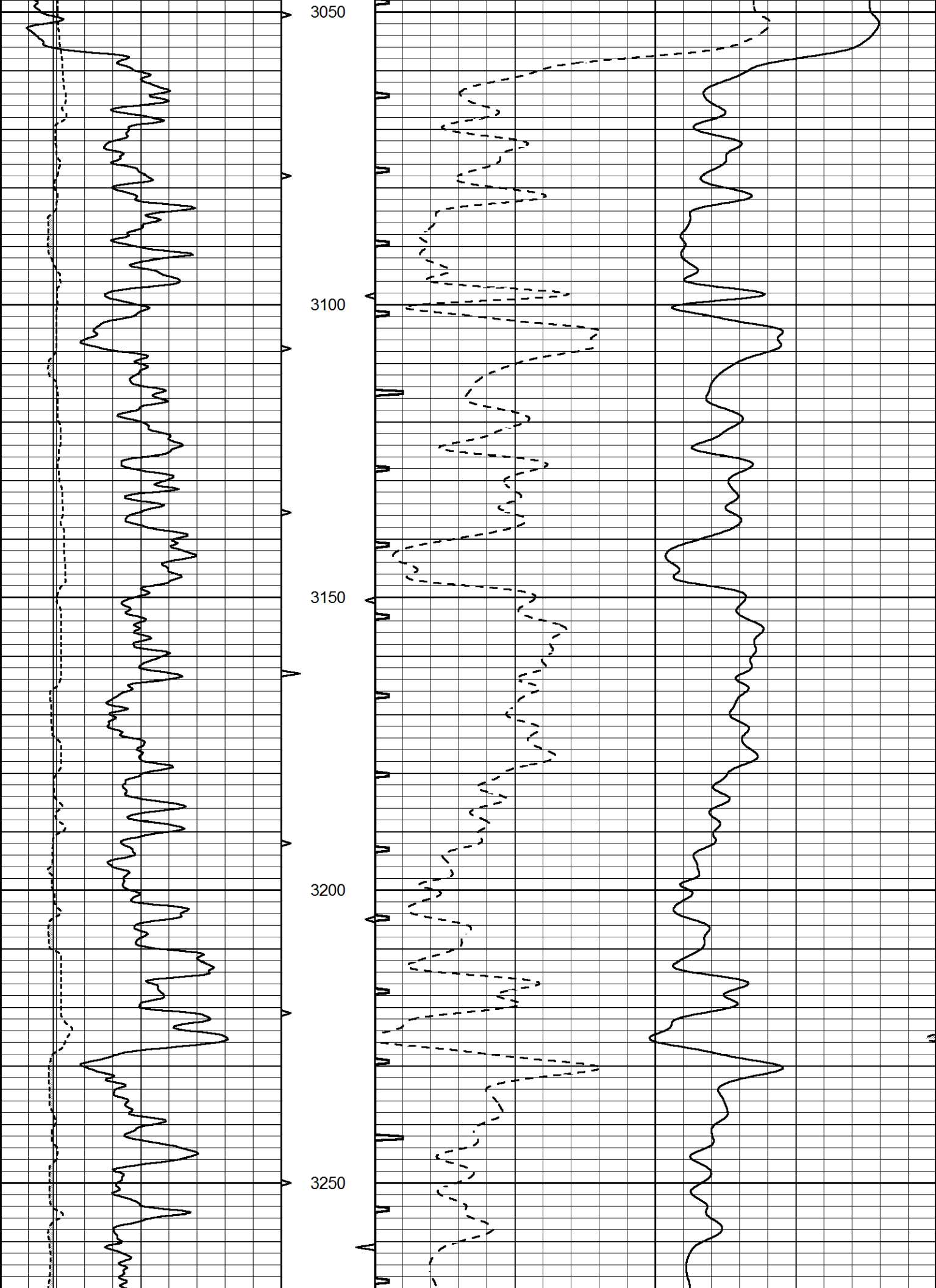


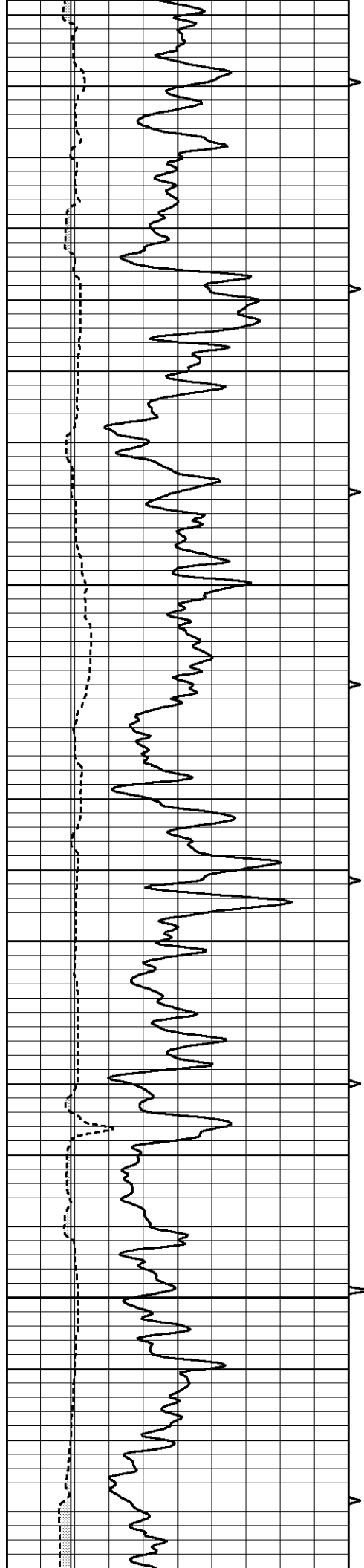










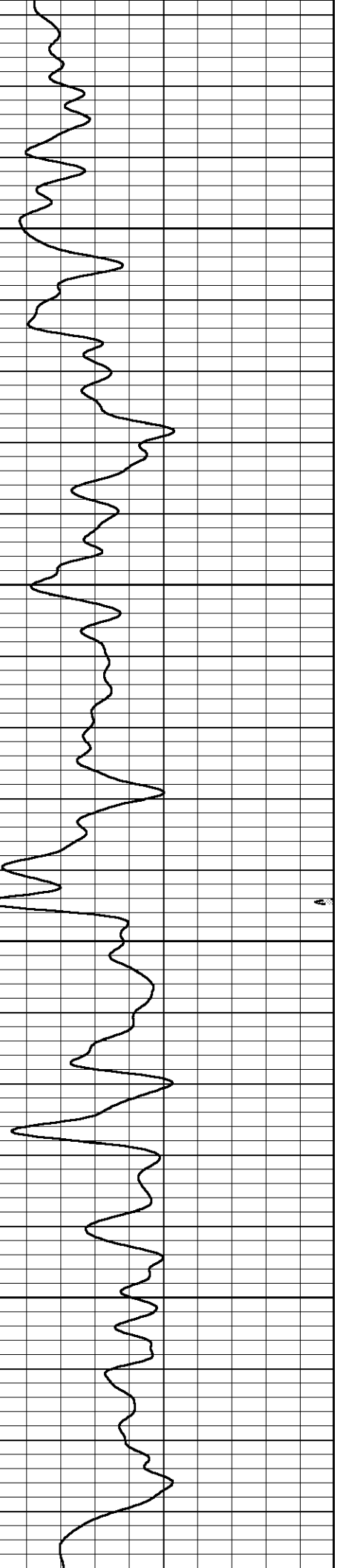
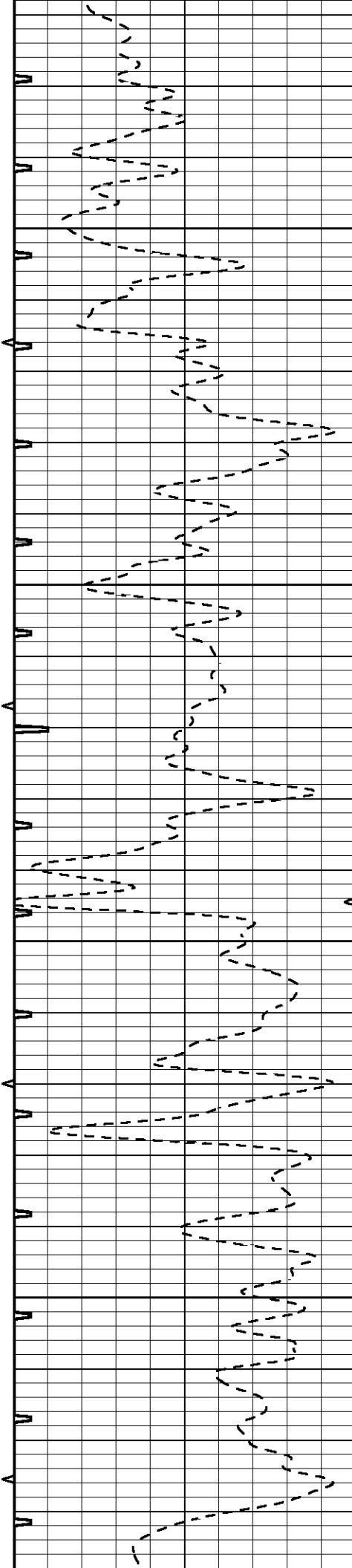


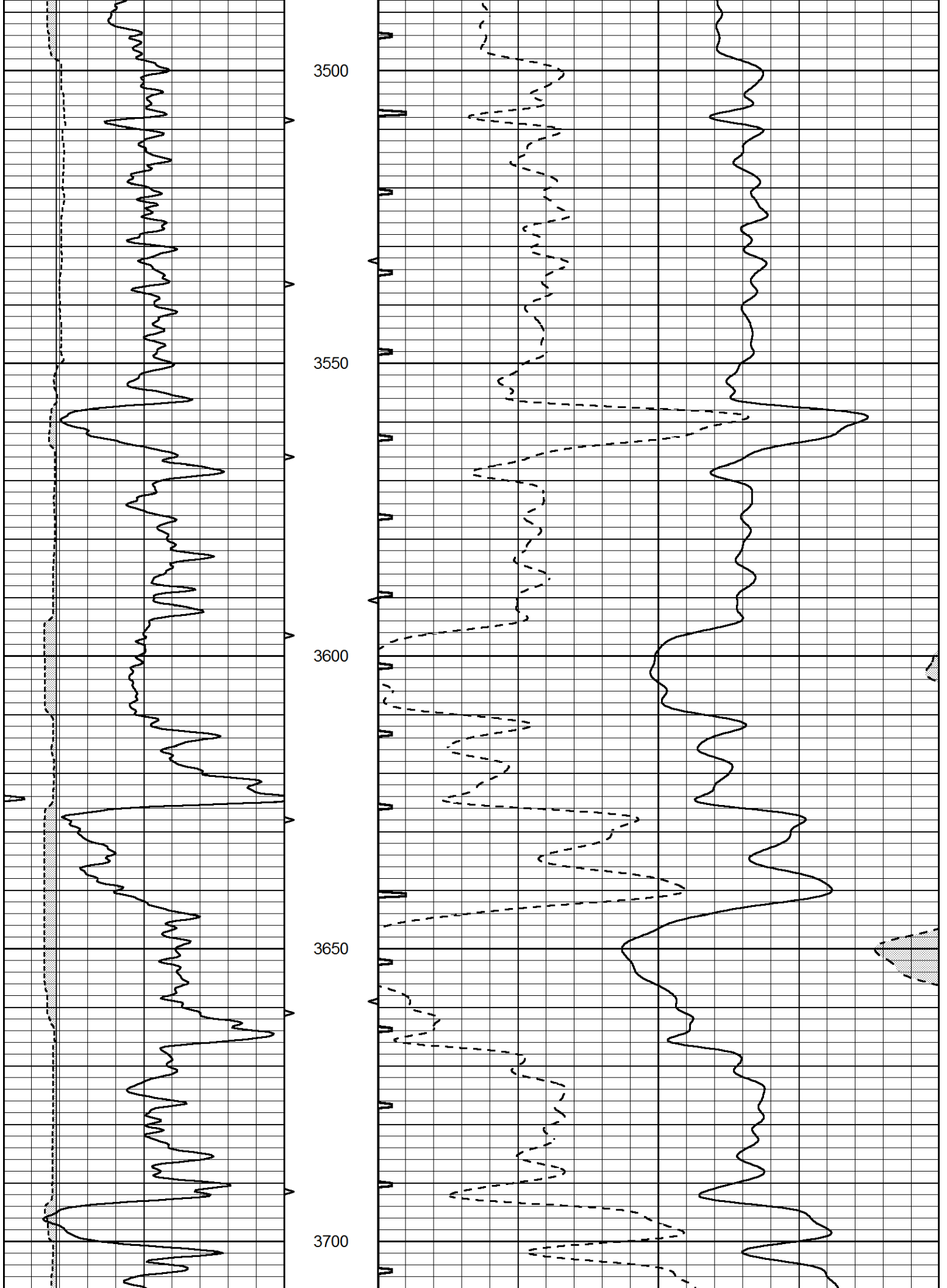
3300

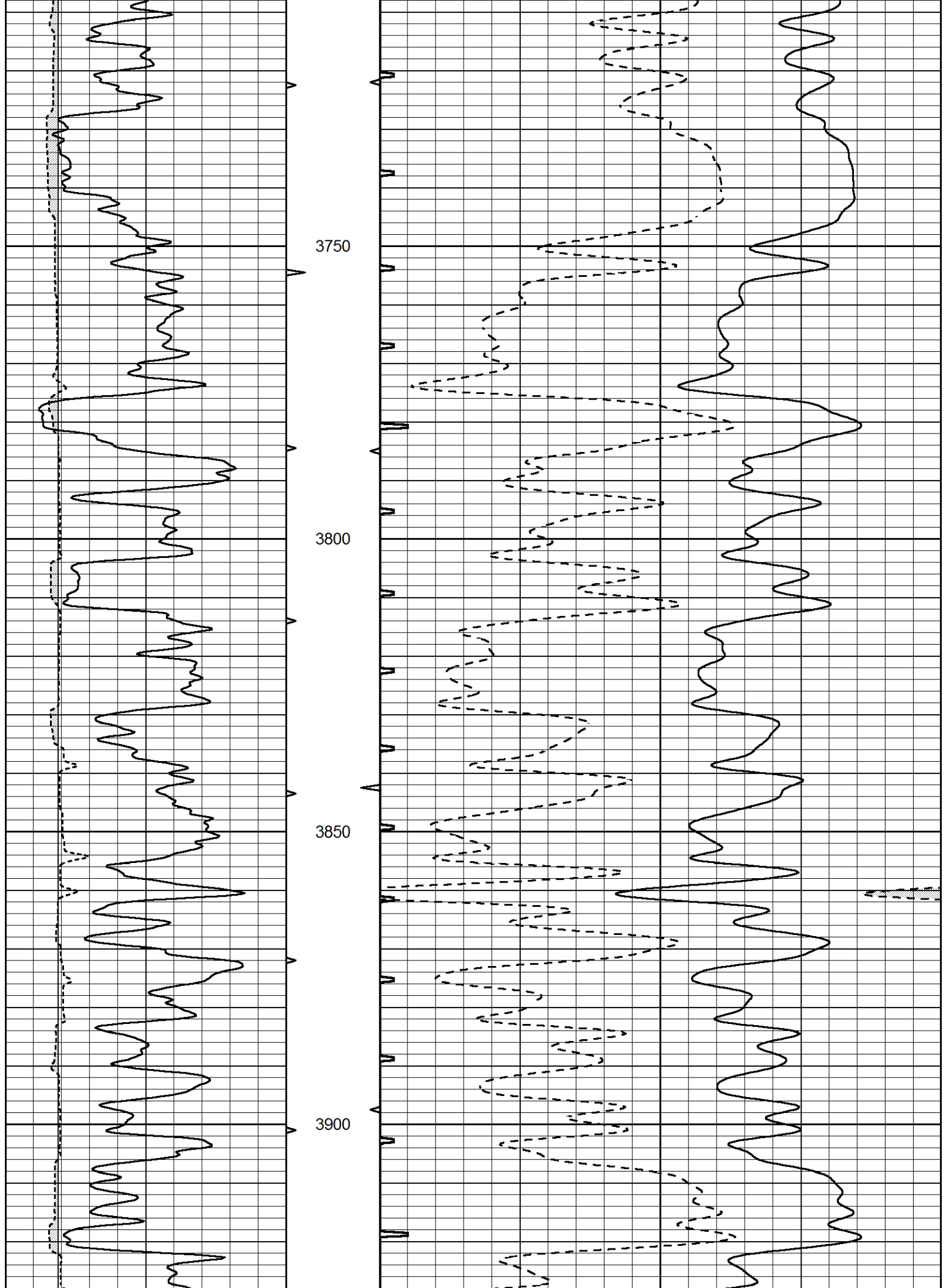
3350

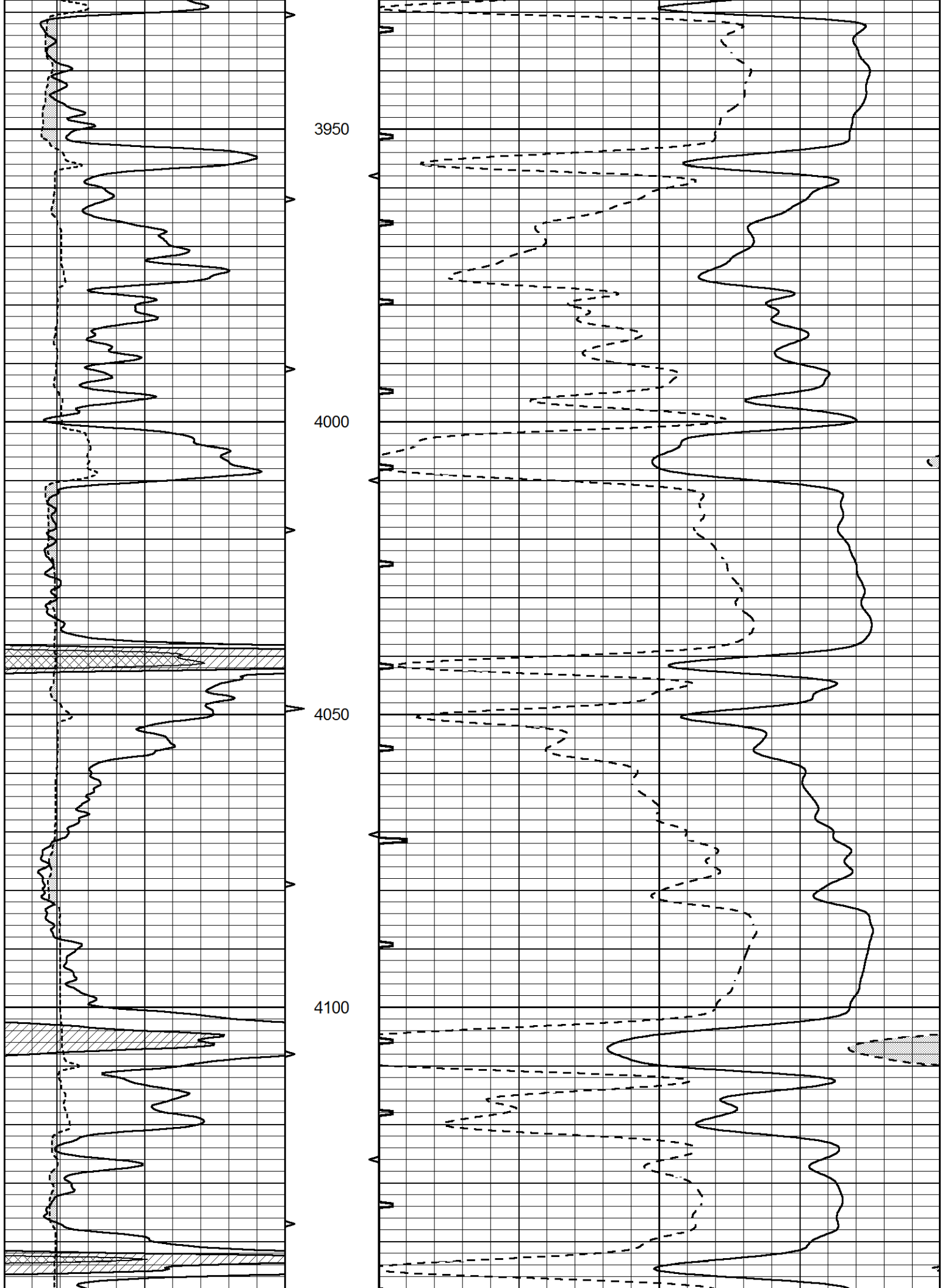
3400

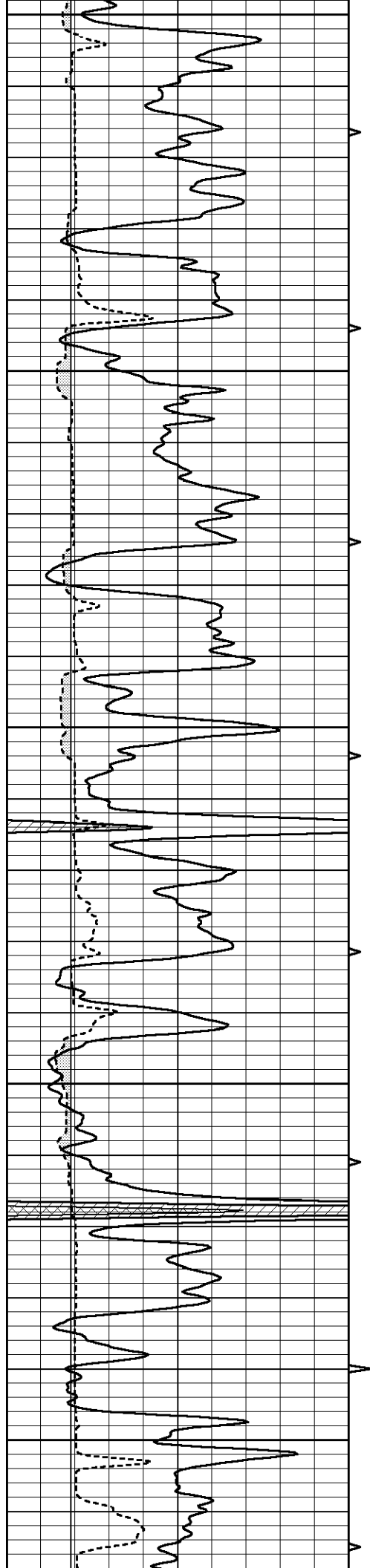
3450











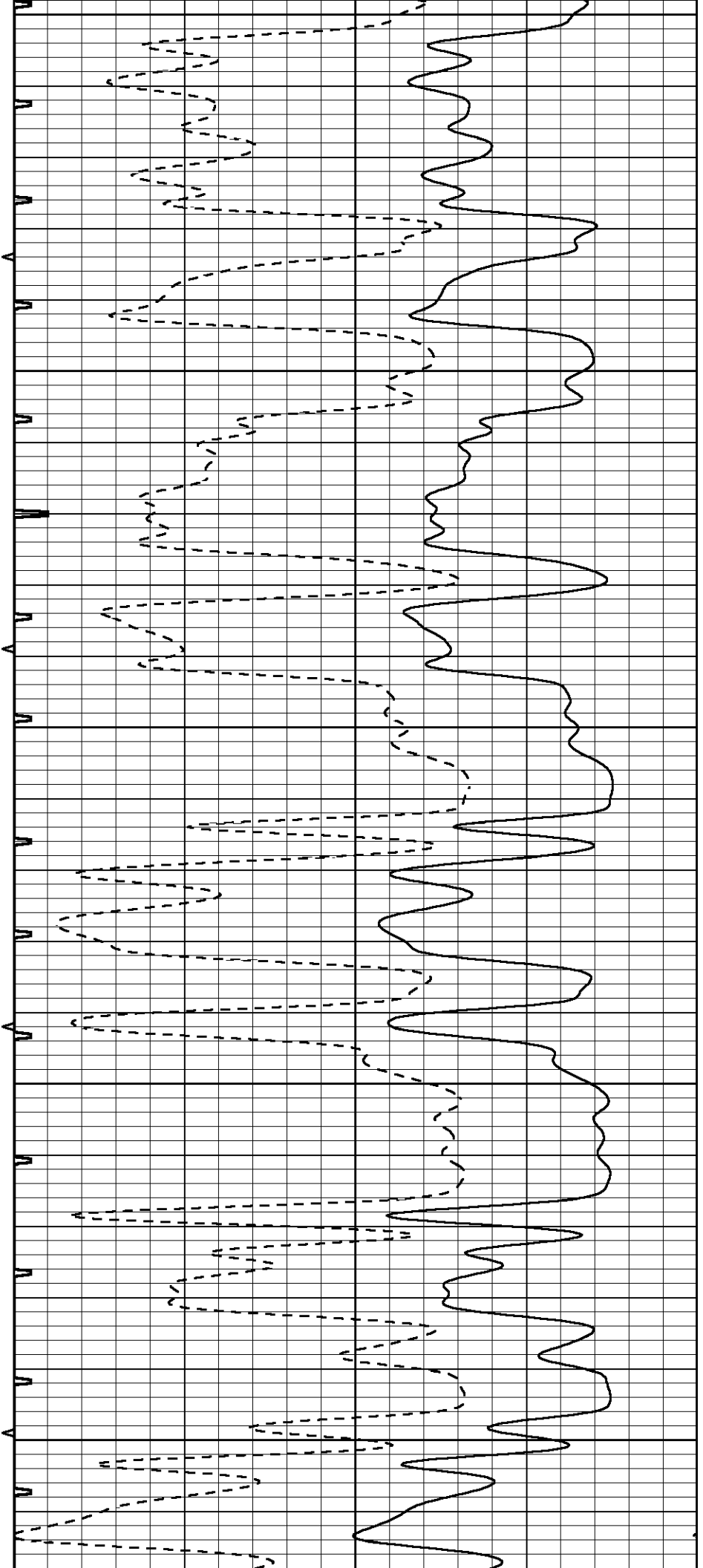
4150

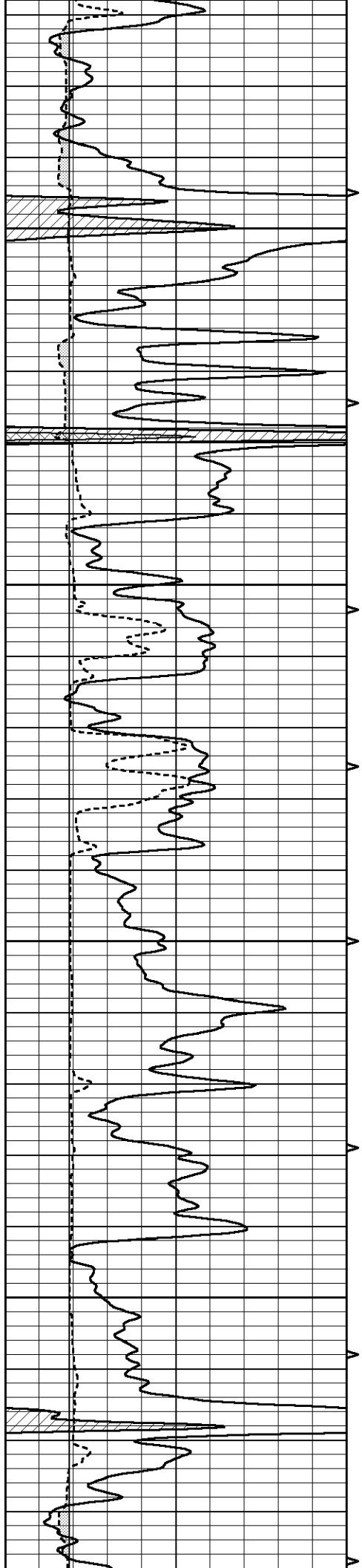
4200

4250

4300

4350



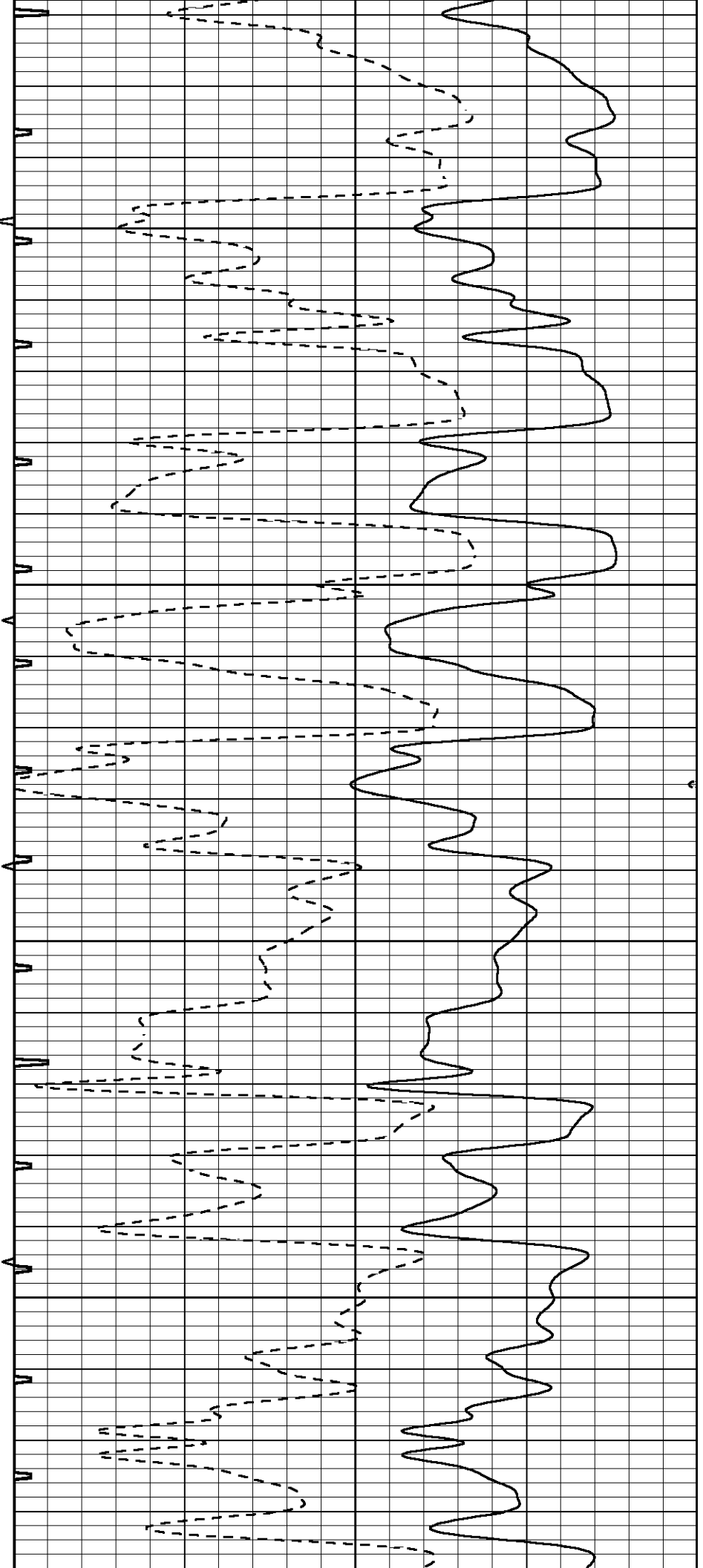


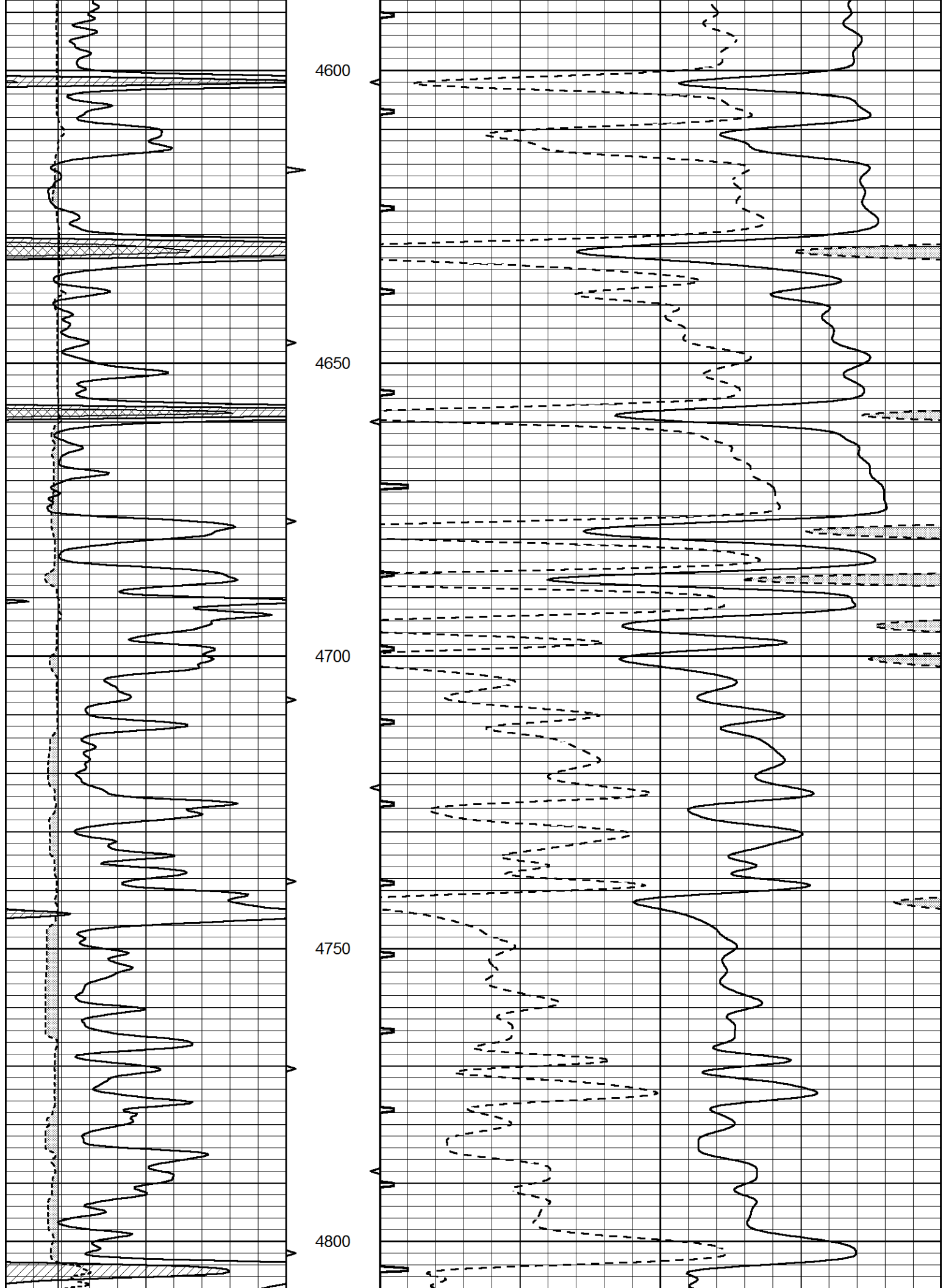
4400

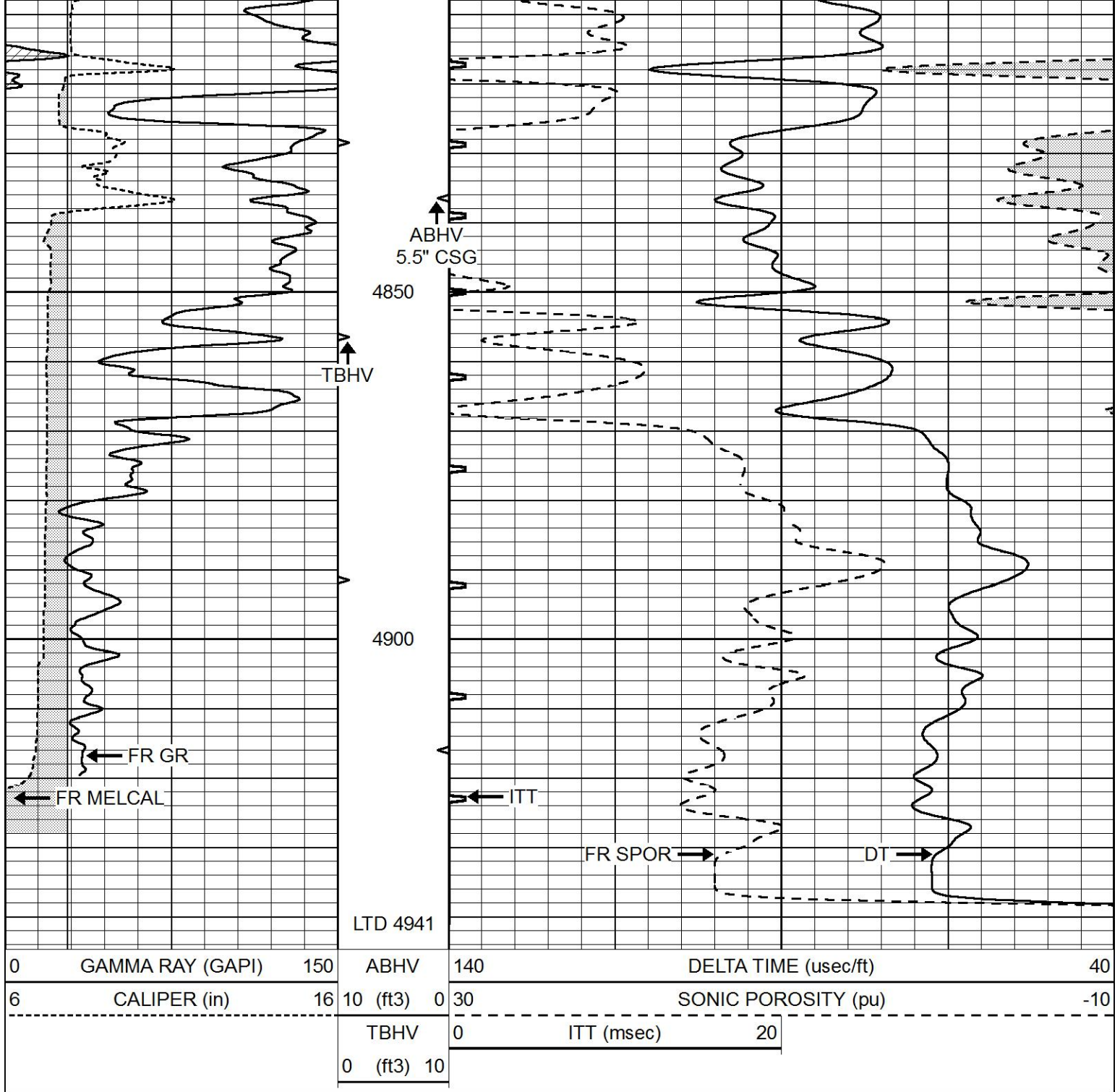
4450

4500

4550







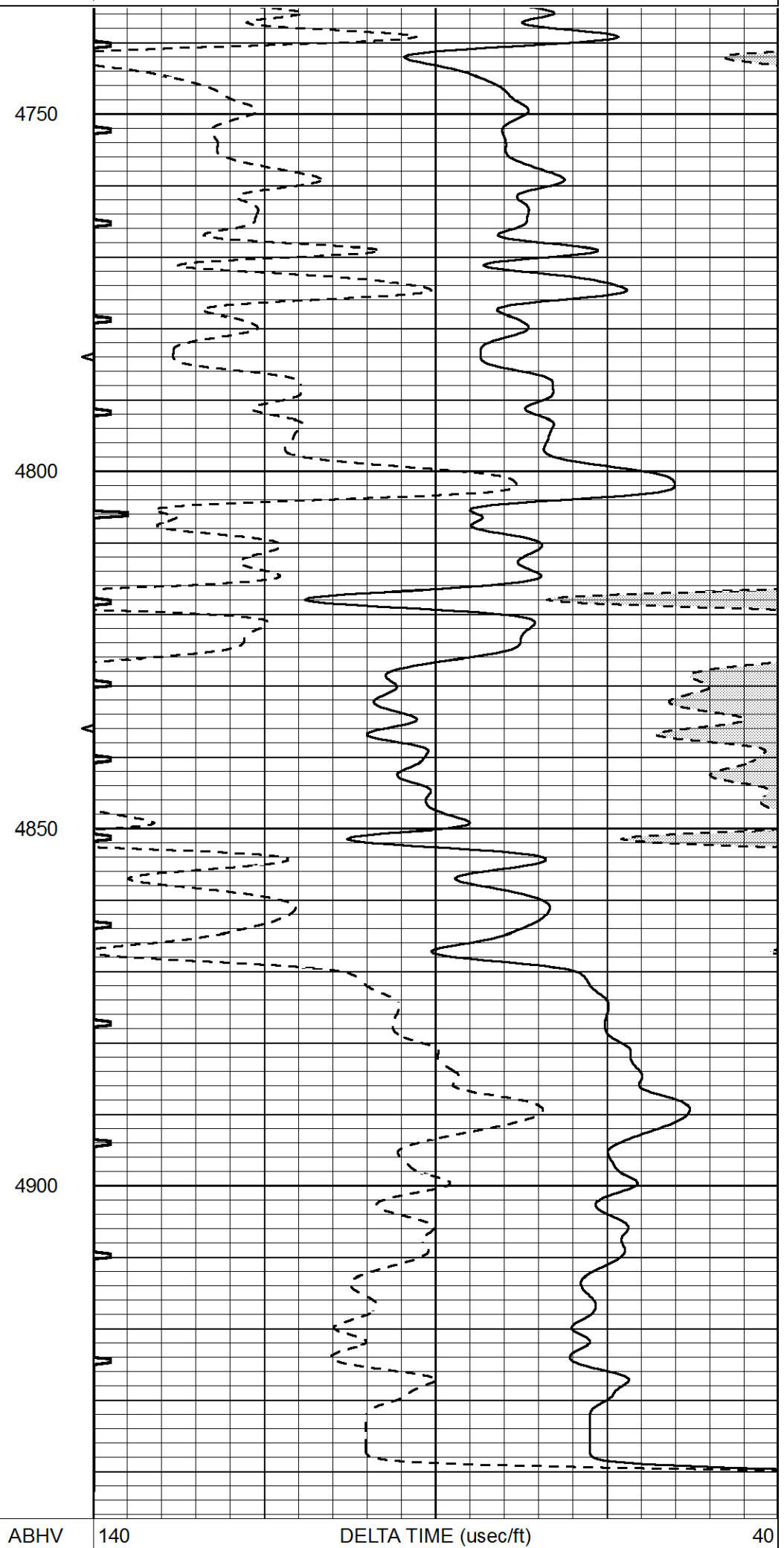
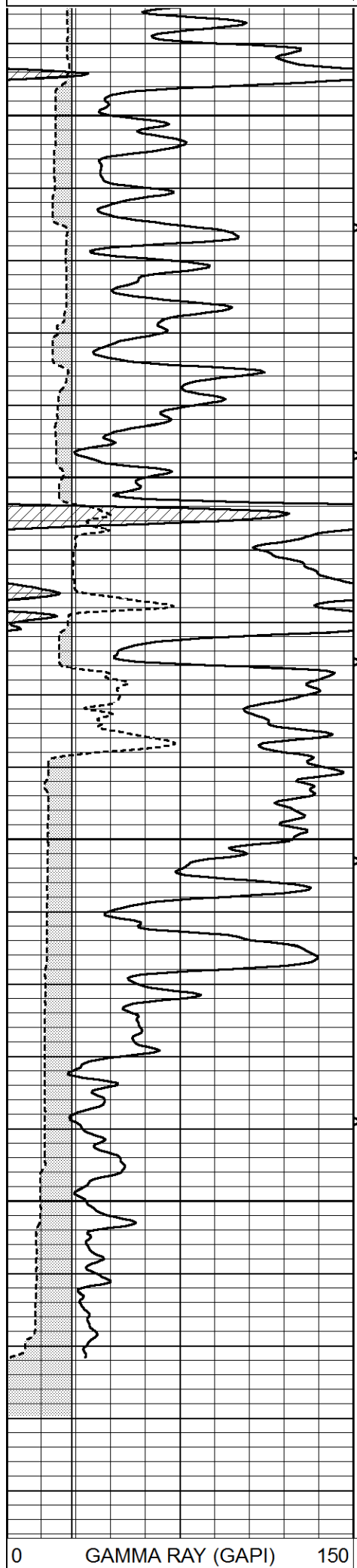
0	GAMMA RAY (GAPI)	150	ABHV	140	DELTA TIME (usec/ft)	40
6	CALIPER (in)	16	10 (ft3) 0	30	SONIC POROSITY (pu)	-10
			TBHV	0	ITT (msec)	20
			0 (ft3) 10			



REPEAT SECTION

Database File 3997ddn8.db
 Dataset Pathname pass11.1
 Presentation Format _slt
 Dataset Creation Sun Oct 06 09:47:27 2019
 Charted by Depth in Feet scaled 1:240

0	GAMMA RAY (GAPI)	150	ABHV	140	DELTA TIME (usec/ft)	40
6	CALIPER (in)	16	10 (ft3) 0	30	SONIC POROSITY (pu)	-10
			TBHV	0	ITT (msec)	20
			0 (ft3) 10			



6	CALIPER (in)	16	10 (ft3)	0	30	SONIC POROSITY (pu)	-10
			TBHV	0	ITT (msec)	20	
			0 (ft3)	10			