



**COMPENSATED
DENSITY/NEUTRON
LOG**

Company DOWNING NELSON OIL COMPANY, INC.

Well FLEMMING #1-24

Field WILDCAT

County CHEYENNE **State** KANSAS

Location: API #: 15-023-21521-0000
1640' FNL & 990' FEL

Other Services
DILMEL
SONIC

Permanent Datum GROUND LEVEL Elevation 3299

Log Measured From KELLY BUSHING 8' A.G.L
Drilling Measured From KELLY BUSHING

Elevation
K.B. 3307
D.F. 3305
G.L. 3299

Company DOWNING NELSON OIL COMPANY, INC.
Well FLEMMING #1-24
Field WILDCAT
County CHEYENNE
State KANSAS

Date	10/6/19		
Run Number	ONE		
Depth Driller	4940		
Depth Logger	4941		
Bottom Logged Interval	4917		
Top Log Interval	3800		
Casing Driller	8 5/8" @ 474'		
Casing Logger	474'		
Bit Size	7 7/8		
Type Fluid in Hole	CHEMICAL MUD	CHLORIDES 5000 PPM	
Density / Viscosity	8.9/56		
pH / Fluid Loss	10.0/7.2		
Source of Sample	FLOWLINE		
Rm @ Meas. Temp	1.30 @ 76F		
Rmf @ Meas. Temp	0.97 @ 76F		
Rmc @ Meas. Temp	1.56 @ 76F		
Source of Rmf / Rmc	MEASUREMENT		
Rm @ BHT	0.79 @ 124F		
Time Circulation Stopped	2 HOURS		
Time Logger on Bottom	////		
Maximum Recorded Temperature	124F		
Equipment Number	3802		
Location	HAYS, KANSAS		
Recorded By	JASON CAPPELLUCCI		
Witnessed By	MARC DOWNING		

<<< Fold Here >>>

All interpretations are opinions based on inferences from electrical or other measurements and we cannot and do not guarantee the accuracy or correctness of any interpretation, and we shall not, except in the case of gross or willful negligence on our part, be liable or responsible for any loss, costs, damages, or expenses incurred or sustained by anyone resulting from any interpretation made by any of our officers, agents or employees. These interpretations are also subject to our general terms and conditions set out in our current Price Schedule.

Comments

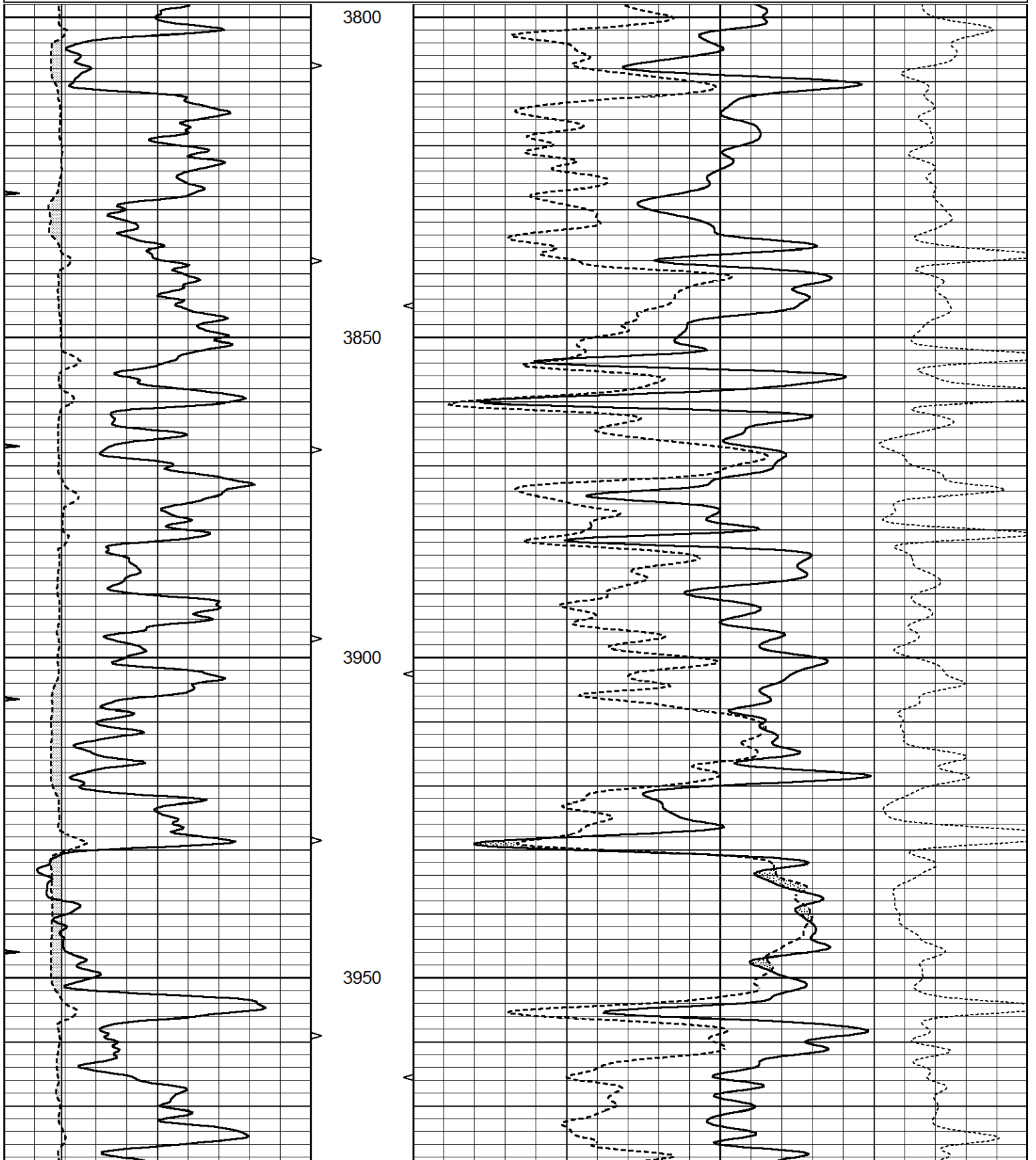
THANK YOU FOR USING ELI WIRELINE SERVICES, HAYS, KS. (785) 628-6395
DIRECTIONS
BREWSTER, KS. - 16 NORTH TO THE T - WEST TO RD. 34 - NORTH 3 MILES
JUST PAST RD. D - EAST INTO

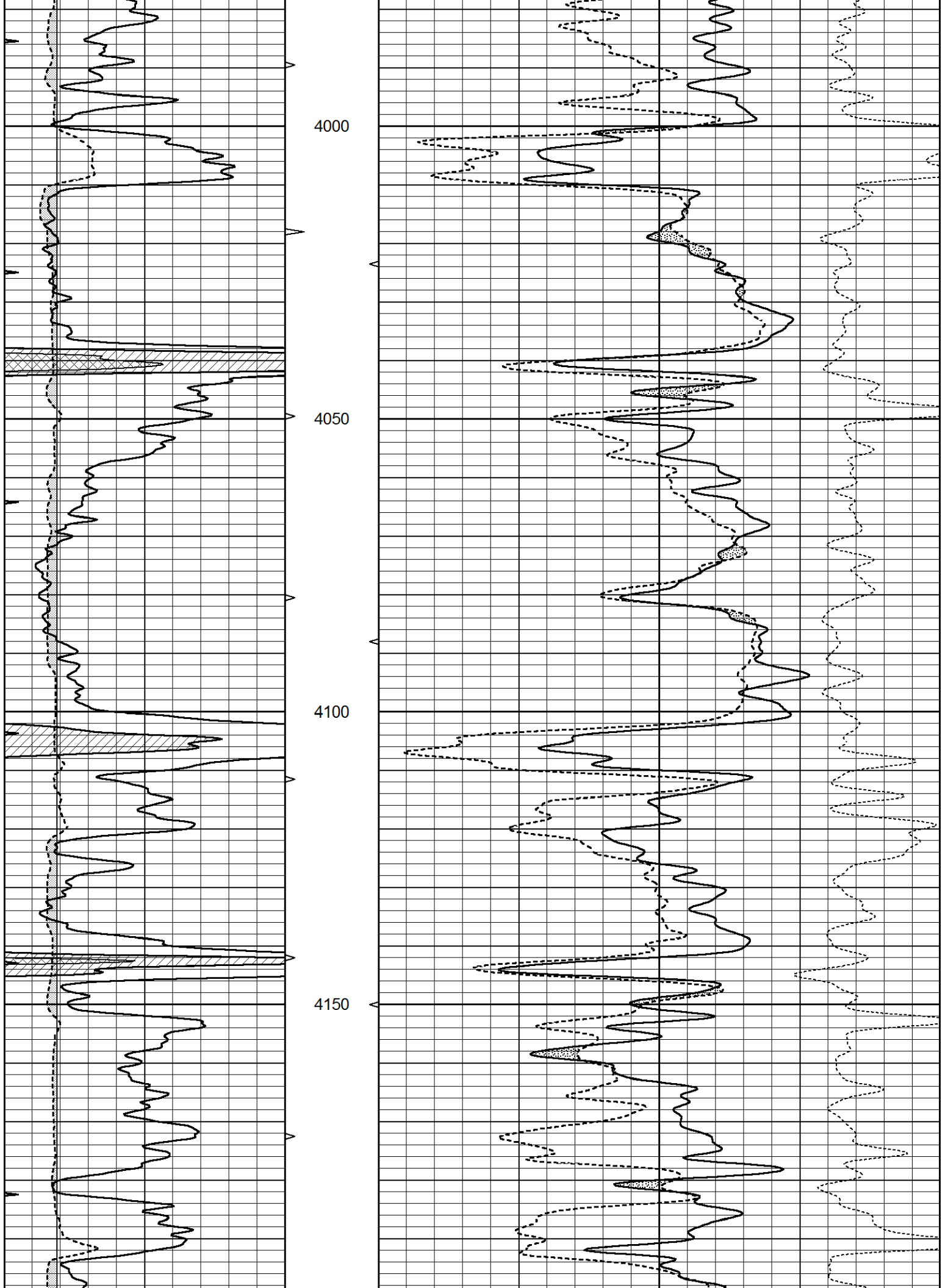


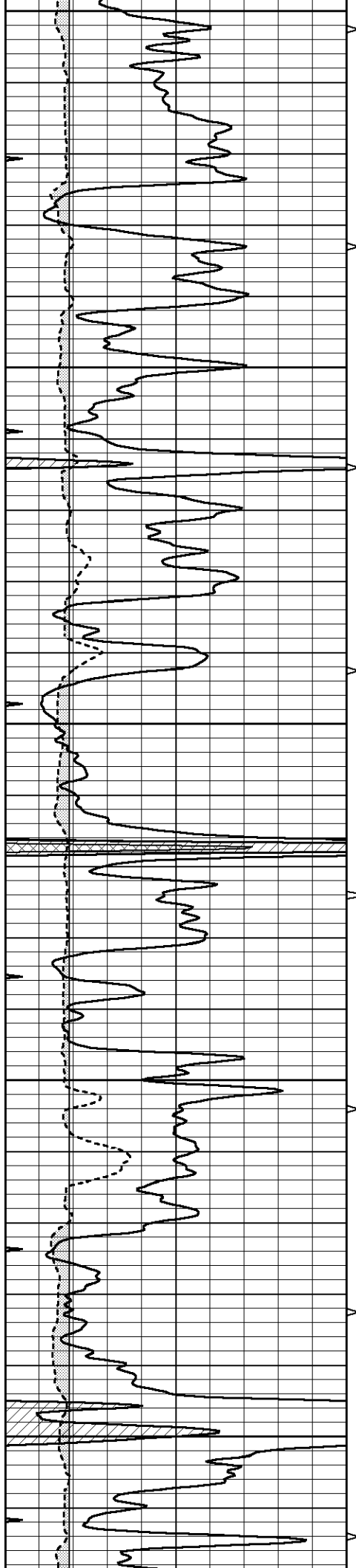
MAIN SECTION

Database File 3997ddn8.db
 Dataset Pathname pass9.1
 Presentation Format _den_neu
 Dataset Creation Sun Oct 06 08:14:45 2019
 Charted by Depth in Feet scaled 1:240

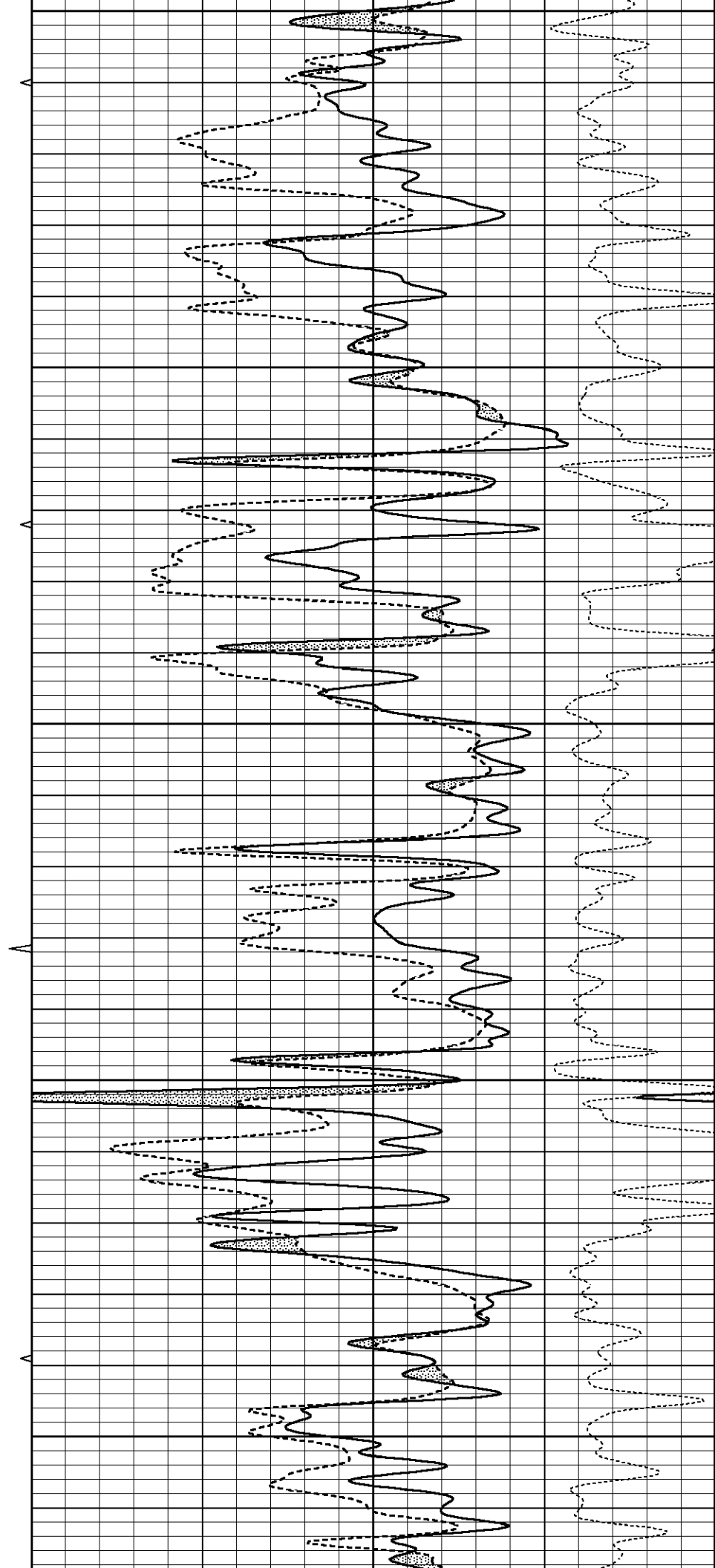
0	GAMMA RAY (GAPI)	150	AVTX	30	COMPENSATED DENSITY (pu)	-10
0	MINMK	20	10 (ft3) 0	30	COMPENSATED NEUTRON (pu)	-10
6	CALIPER (in)	16	BVTX		-0.25 CORRECTION (g/cc)	0.25
			0 (ft3) 10			

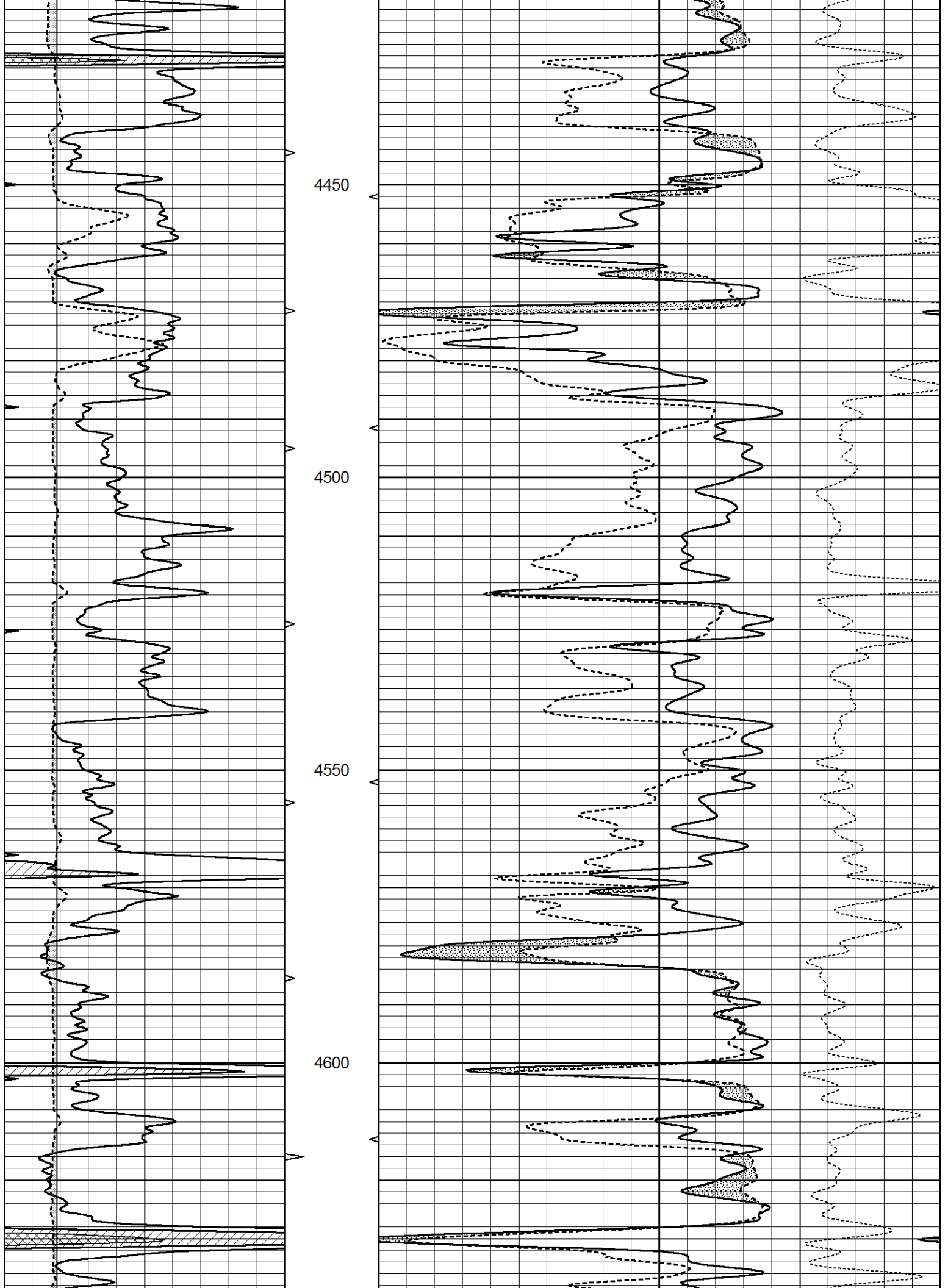


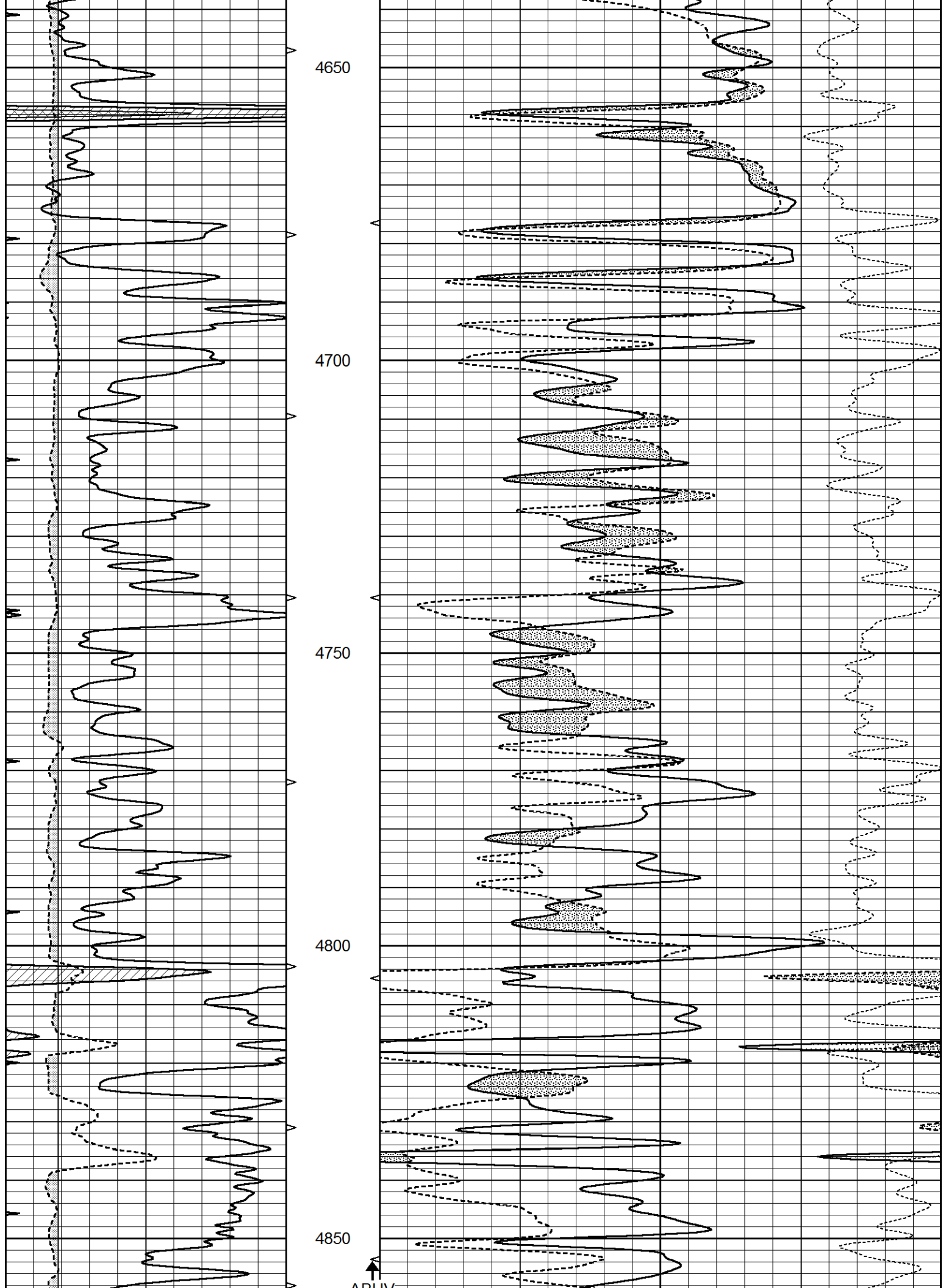


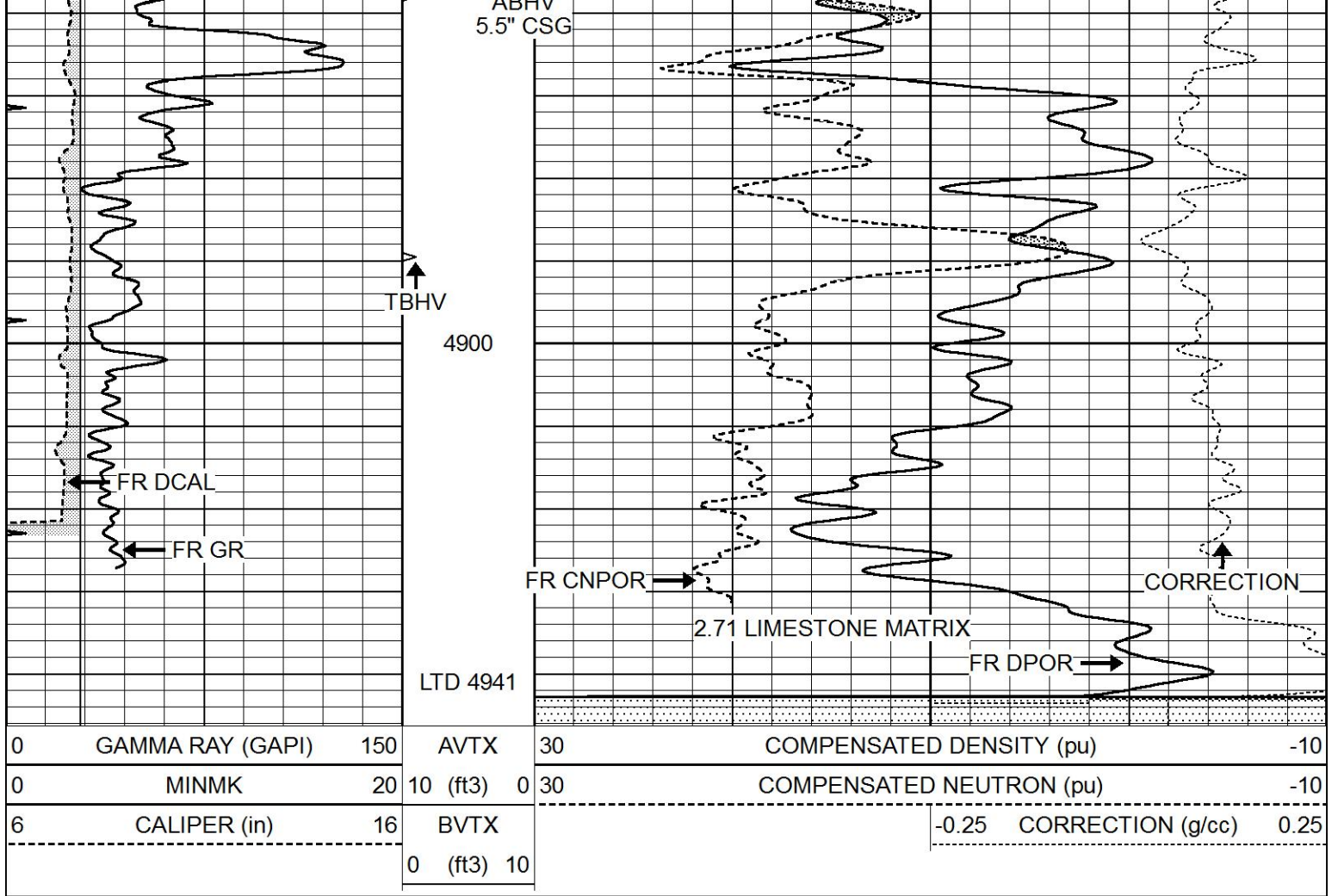


4200
4250
4300
4350
4400





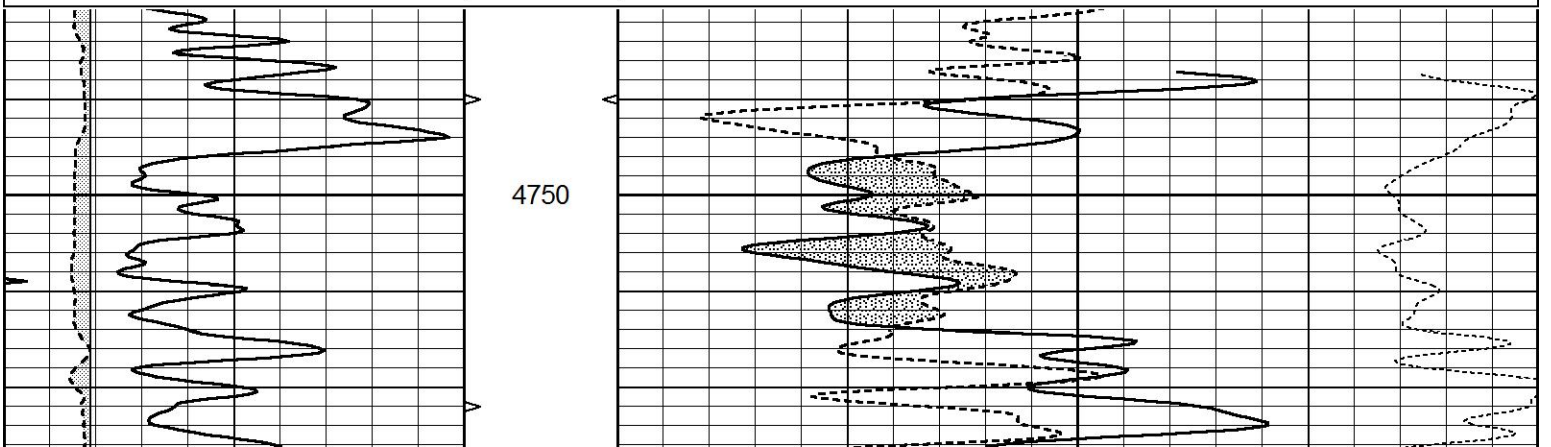


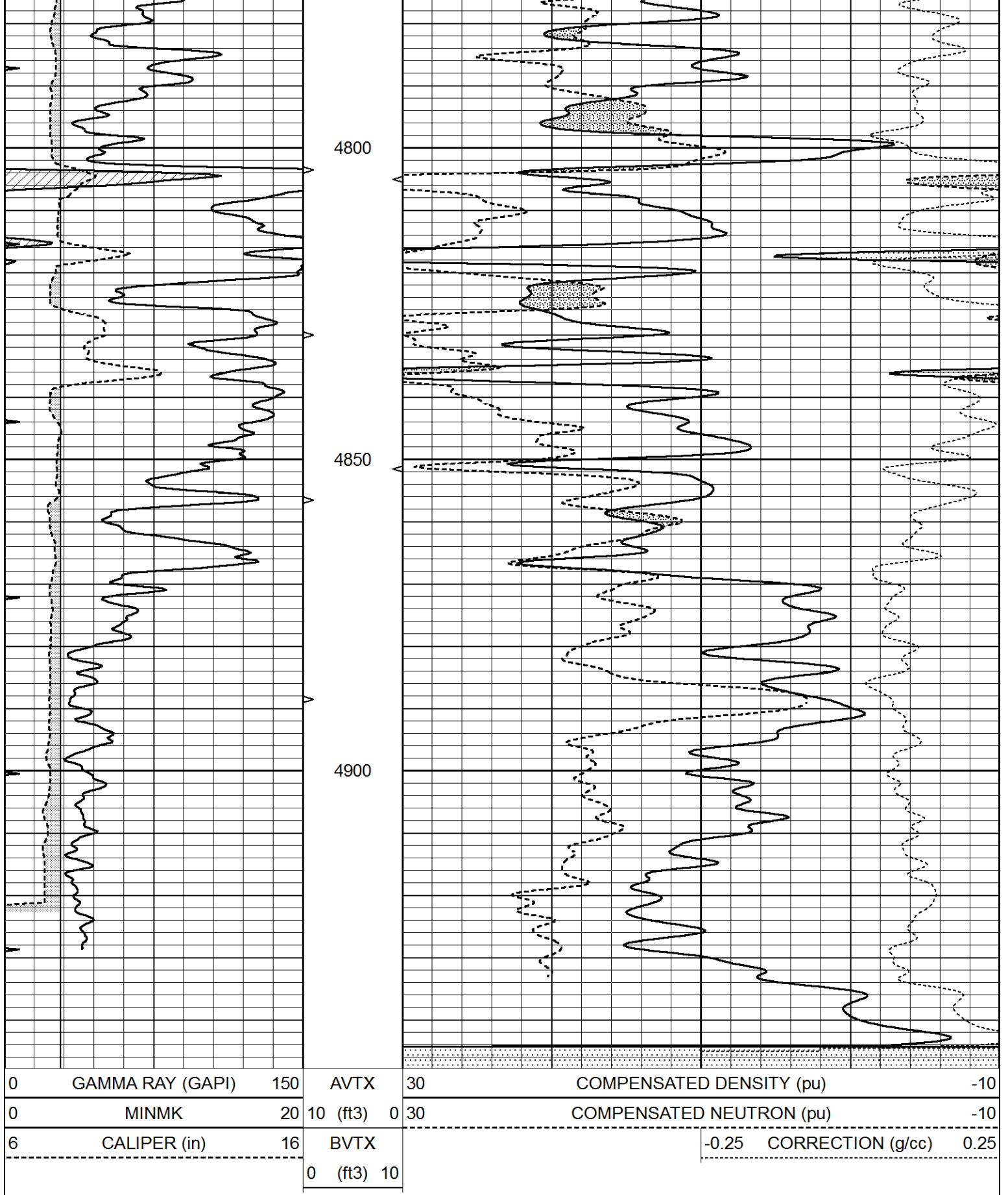


REPEAT SECTION

Database File 3997ddn8.db
 Dataset Pathname pass8.1
 Presentation Format _den_neu
 Dataset Creation Sun Oct 06 07:56:41 2019
 Charted by Depth in Feet scaled 1:240

0	GAMMA RAY (GAPI)	150	AVTX	30	COMPENSATED DENSITY (pu)	-10
0	MINMK	20	10 (ft3)	0 30	COMPENSATED NEUTRON (pu)	-10
6	CALIPER (in)	16	BVTX		-0.25 CORRECTION (g/cc)	0.25
			0 (ft3)	10		





Calibration Report

Database File 3997ddn8.db
 Dataset Pathname pass8.1
 Dataset Creation Sun Oct 06 07:56:41 2019

Master Calibration Performed: Fri Jan 18 10:53:52 2019

	Background	Aluminum	Magnesium	
Window 1	563.20	5403.39	24190.50	cps
Window 2	44.78	1243.51	6049.93	cps
Window 4	247.62	1222.40	5239.60	cps
Window 5	568.17	8975.27	17094.80	cps
Window 6	44.48	1484.88	2922.28	cps
Window 8	270.82	2877.34	5377.89	cps
Bulk Density	-	2.6020	1.6830	g/cc
Pe	-	3.0000	2.5070	b/e

LS Alpha: : -1.8641 SS Alpha: : -0.7692 LS CPE: : 1.1004
 LS Beta: : 127931.7253 SS Beta: : 20075.8142 SS CPE: : 1.5209

Before Survey Background Counts Verification Performed: Wed Dec 31 18:00:00 1969

Window 1	0.00	cps
Window 2	0.00	cps
Window 4	0.00	cps
Window 5	0.00	cps
Window 6	0.00	cps
Window 8	0.00	cps

After Survey Background Counts Verification Performed: Wed Dec 31 18:00:00 1969

Window 1	0.00	cps
Window 2	0.00	cps
Window 4	0.00	cps
Window 5	0.00	cps
Window 6	0.00	cps
Window 8	0.00	cps

Lithodensity Caliper Calibration Performed: Fri Jan 18 10:53:52 2019

Results		References (in)		Gain	Offset
Low	High	Low	High		
3586.3	5529.9	8.0	16.0	0.0	-6.8

Before Survey Caliper Verification Performed:

Reference	Reading
_____	_____
Caliper (in)	

After Survey Caliper Verification Performed:

Compensated Neutron Calibration Report

Serial Number: 080621PMC
 Tool Model: NABORS

Detector	Readings	Measured	Target
Short Space	cps		
Long Space	cps	pu	pu

POST-SURVEY VERIFICATION

Detector	Readings	Measured	Target
Short Space	cps		
Long Space	cps	pu	pu

Gamma Ray Calibration Report

Serial Number:	7		
Tool Model:	Probe1		
Performed:	Tue Feb 19 11:45:10 2019		
Calibrator Value:	1.0	GAPI	
Background Reading:	0.0	cps	
Calibrator Reading:	1.0	cps	
Sensitivity:	0.4300	GAPI/cps	