



Sonic Cement
Bond Log

15-007-24342-0000

API No.

Company Woolsey Operating Company, LLC

Well Mikita #2

Field Hardtner

County Barber State Kansas

Location

SE - NW - NW - NW
650' FNL & 530' FWL

Sec: 17 Twp: 35S Rge: 12W

Other Services
Mast Trailer

Permanent Datum Ground Level Elevation 1391
Log Measured From Kelly Bushing 12 Ft. Above Perm. Datum
Drilling Measured From Kelly Bushing

Elevation
K.B. 1403
D.F. 1401
G.L. 1391

Run Number	One	
Date Survey	12/12/2018	
Date Cementing	12/7/2018	
Type Cementing Operation	Primary	
Depth Driller	5307	
Depth Logger	4958	
Logged Interval	4957 to	
Casing Driller	5.5 @ TD	
Float Collar -- D.V. Tool	////	@
Squeeze Depth	////	
Amount & Type Cement	////	
Amount & Type Admix	////	
Type Fluid In Hole	Water	
Fluid Level	Full	
Salinity PPM CL	////	
Weight lb/gal -- Vis.	////	////
Approx. Logged Cement Top		
Calculated Cement Top		
Max. Hole Temperature	////	
Tool No.	DIG02	
Spacing Recorded	3-5	
Equipment -- Location	02	Pratt
Recorded By	N. Schmeidler	
Witnessed By	Bill Gallagher	

<<< Fold Here >>>

All interpretations are opinions based on inferences from electrical or other measurements and we cannot and do not guarantee the accuracy or correctness of any interpretation, and we shall not, except in the case of gross or willful negligence on our part, be liable or responsible for any loss, costs, damages, or expenses incurred or sustained by anyone resulting from any interpretation made by any of our officers, agents or employees. These interpretations are also subject to our general terms and conditions set out in our current Price Schedule.

Comments

Thank you for using Excel Wireline (620) 388-5676

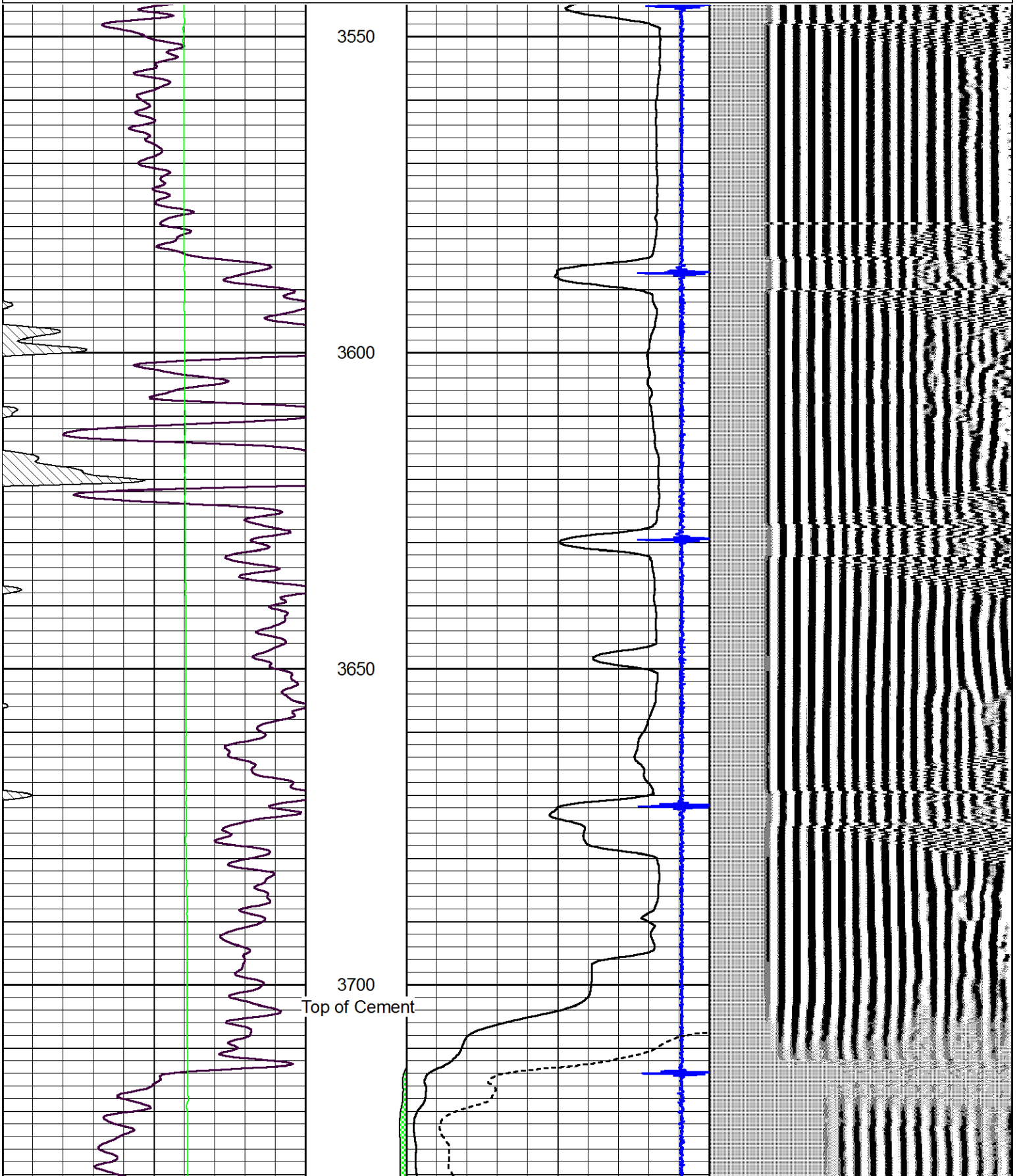
Hardtner
S to State Line Rd
1/4 W
N into

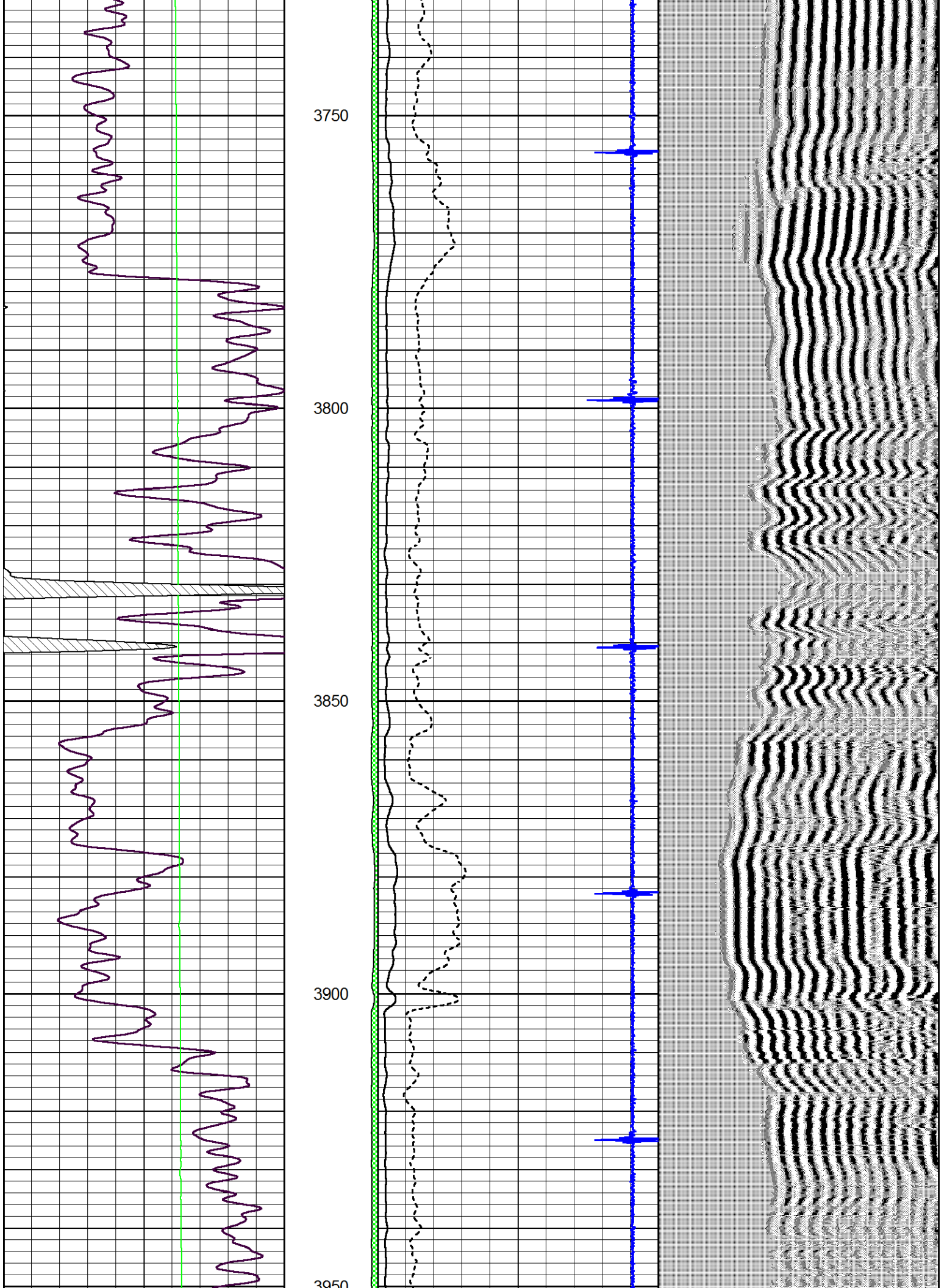


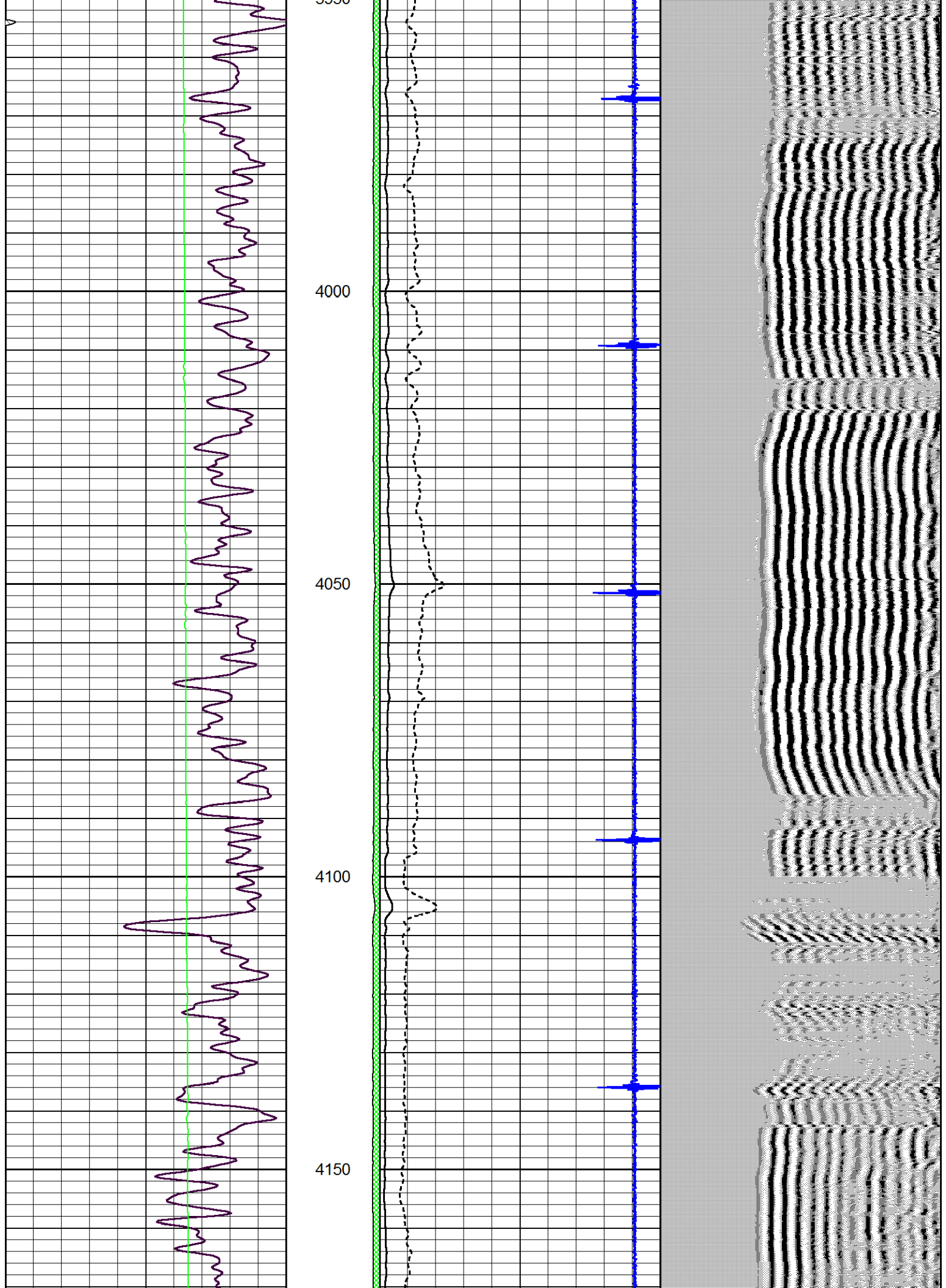
Main Pass

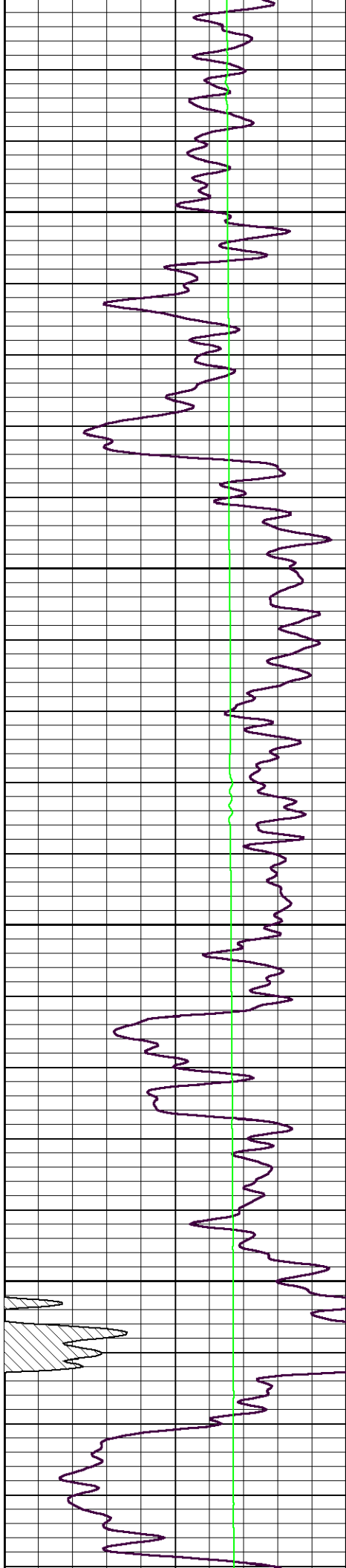
Database File woolsey_mikita_2.db
 Dataset Pathname grcbl/pass5
 Presentation Format excel
 Dataset Creation Wed Dec 12 08:31:55 2018
 Charted by Depth in Feet scaled 1:240

0	Gamma Ray (GAPI)	150	amp3ft	3	Casing Collars	-0.3	200	Variable Density (usec)	1200
0	LTEN (lb)	2000	(mV)	Amplitude					
			-100 10	Amplified Amplitude (mV)					







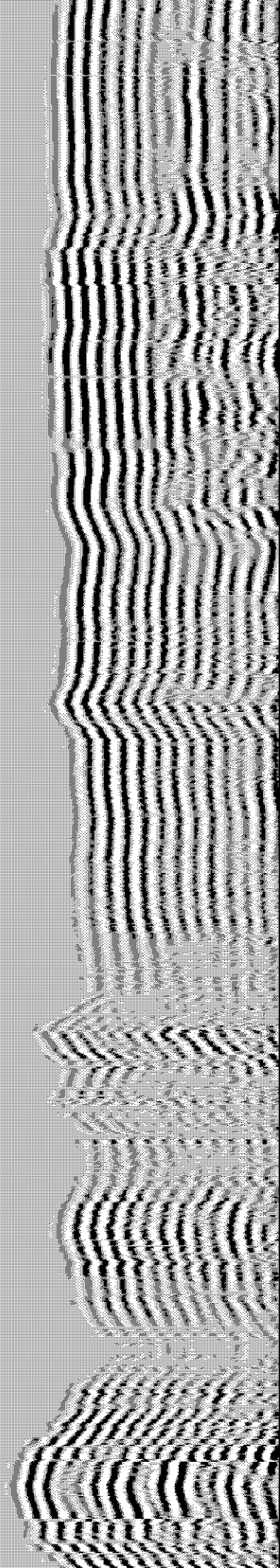
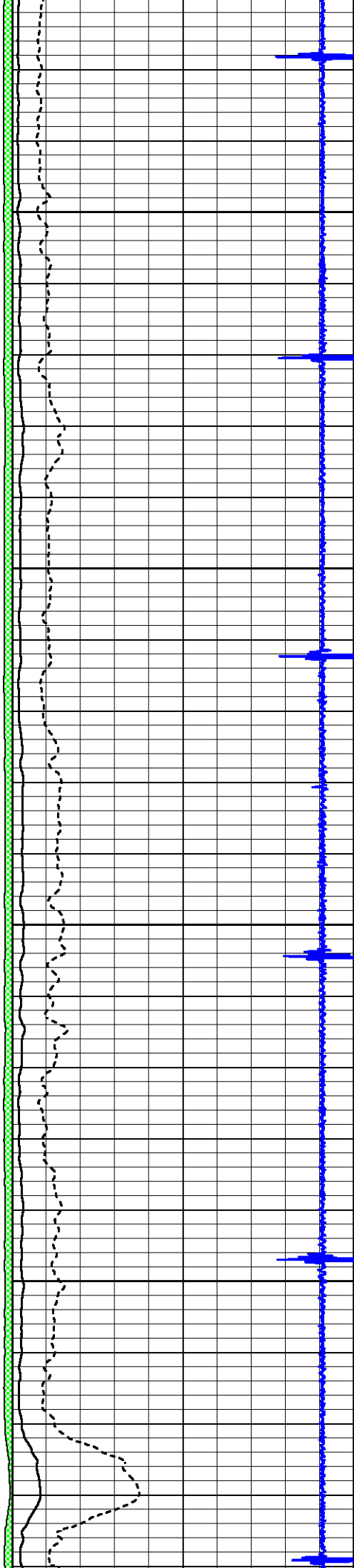


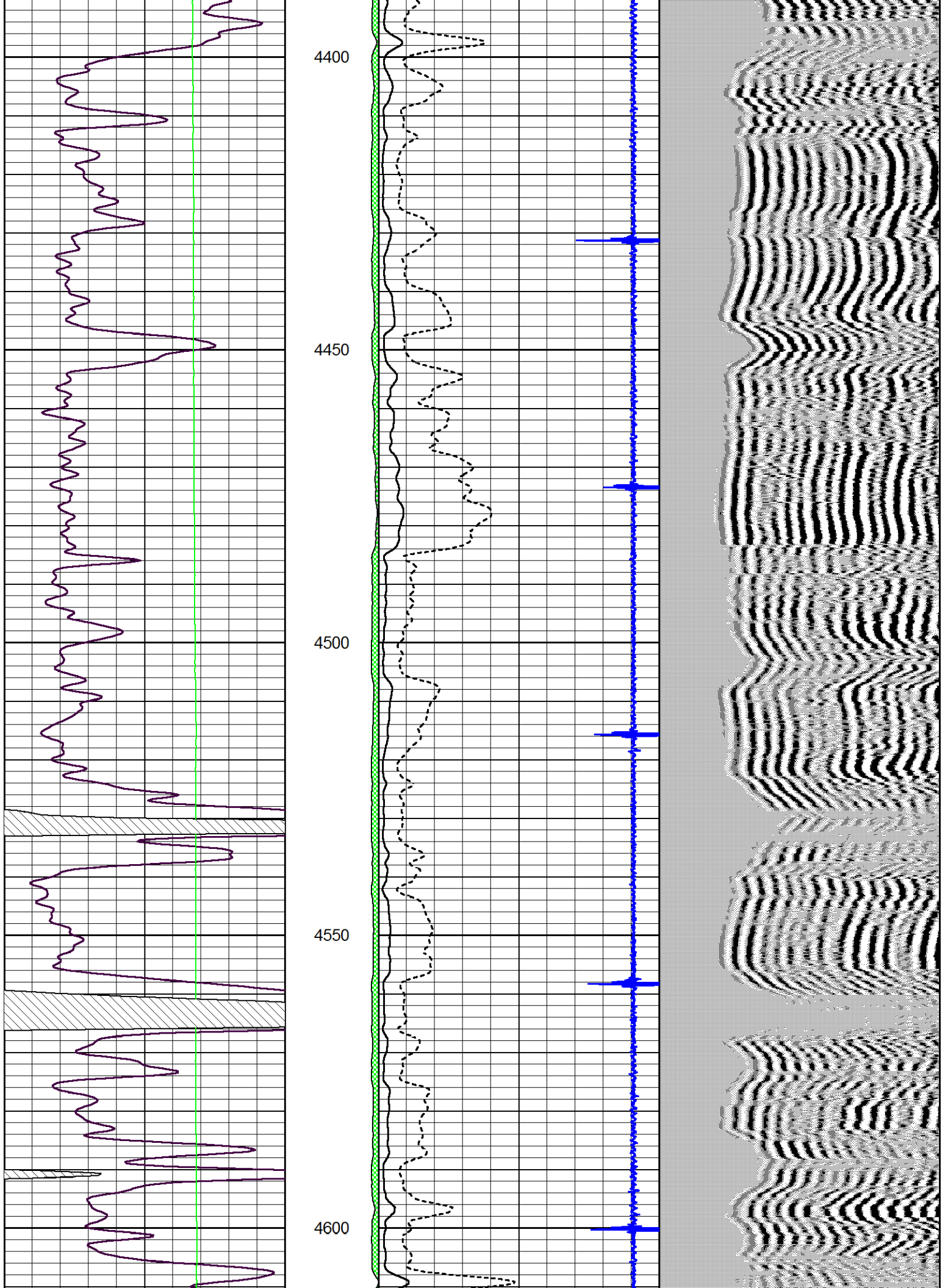
4200

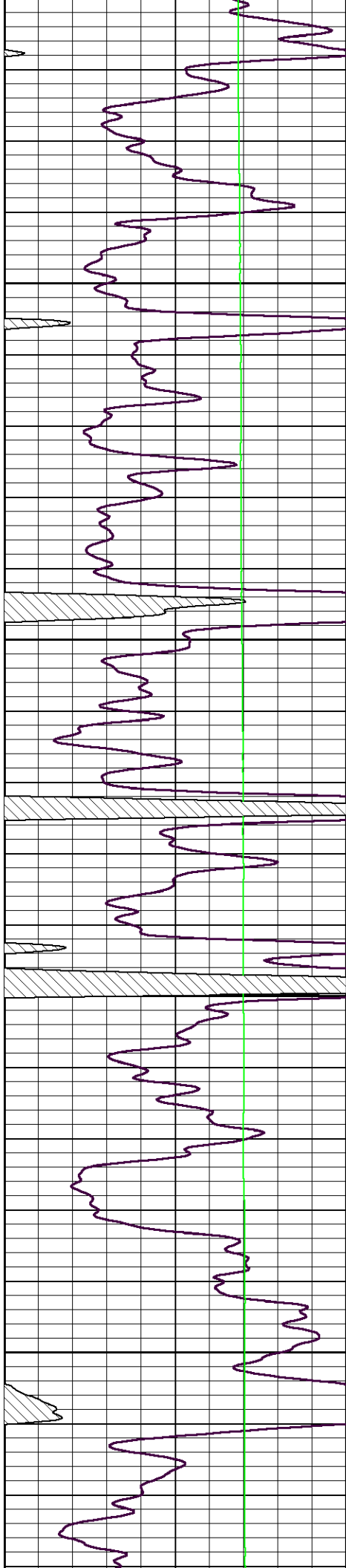
4250

4300

4350





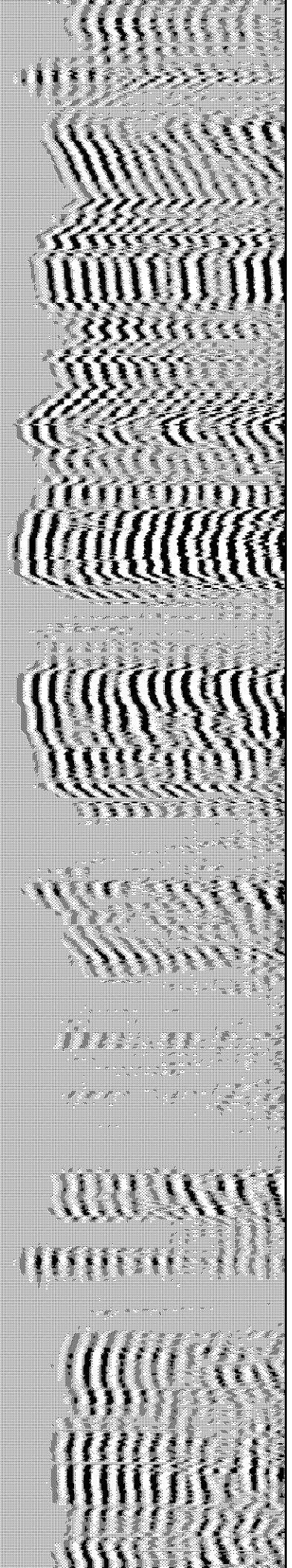
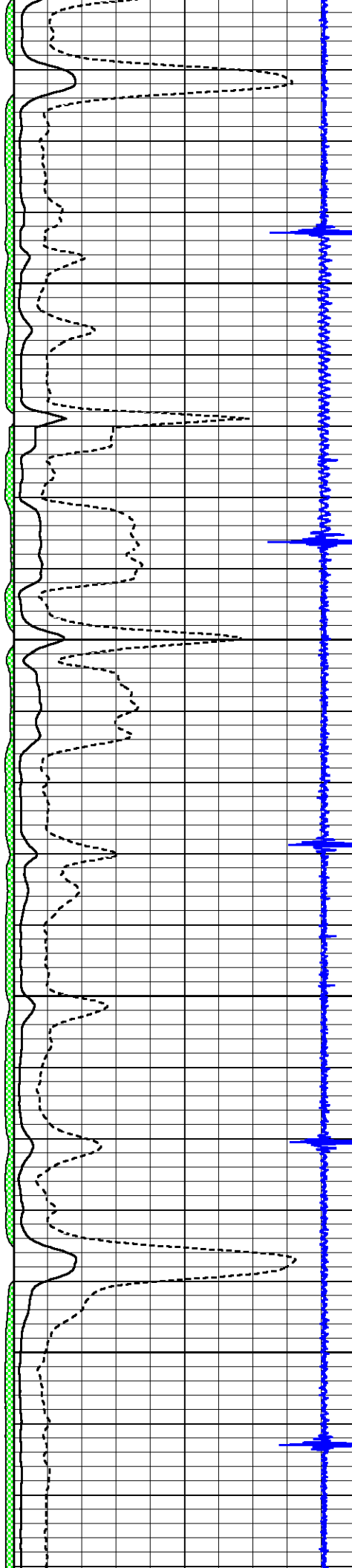


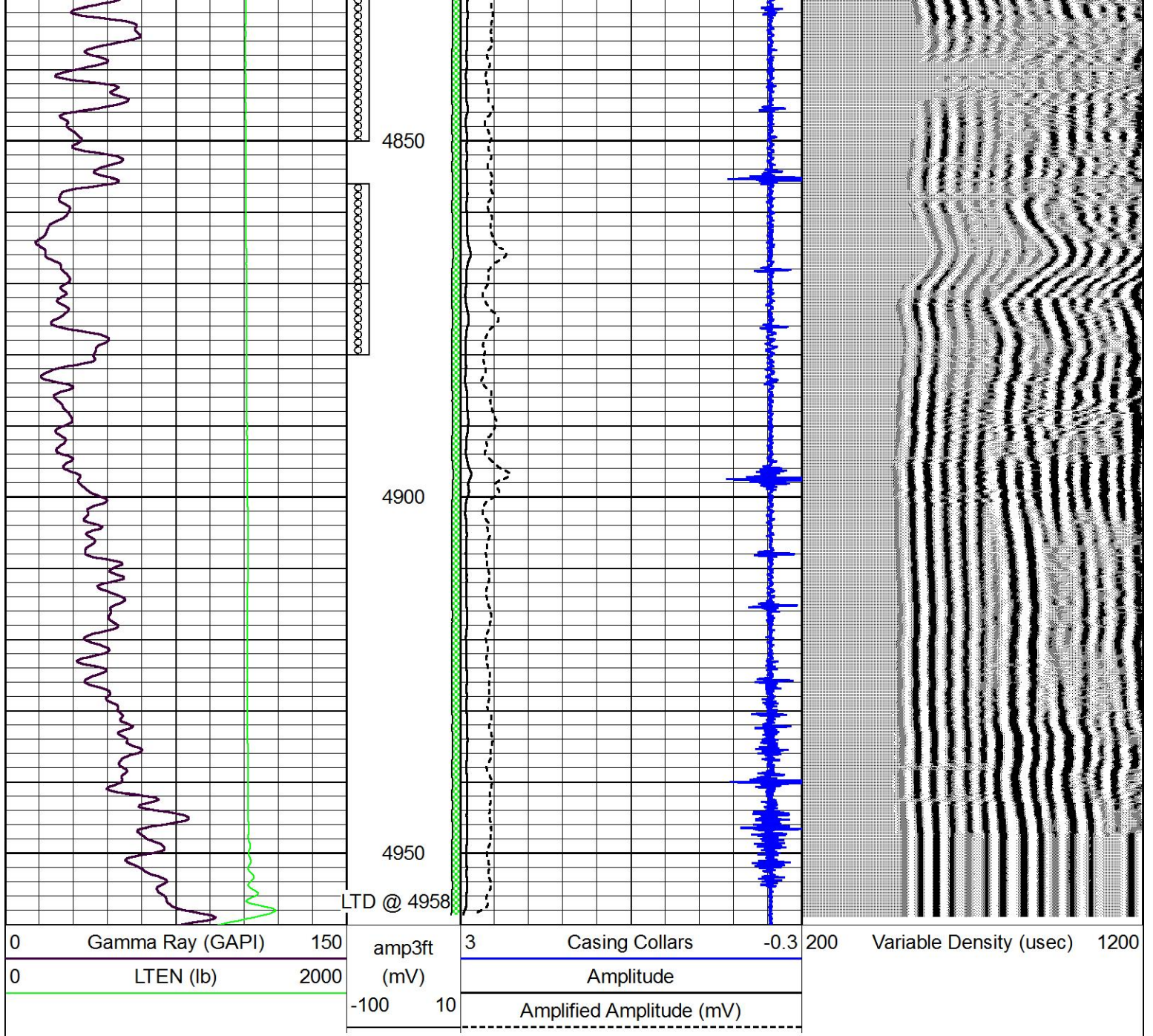
4650

4700

4750

4800





Repeat Section

Database File woolsey_mikita_2.db
 Dataset Pathname grcbl/pass4
 Presentation Format excel
 Dataset Creation Wed Dec 12 08:25:44 2018
 Charted by Depth in Feet scaled 1:240

