

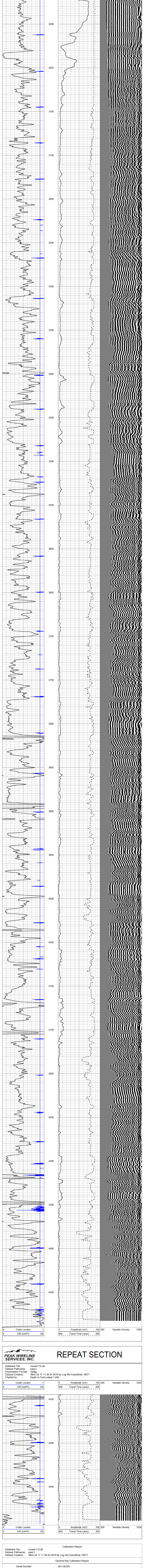
PEAK WIRELINE SERVICES, INC.		DUAL SPACED CEMENT BOND LOG	
Company: MULL DRILLING COMPANY, INC.		Well: COOPER #1-12	
Field: WILDCAT		County: RAMWINS	
Location: 242 FNL & 581 FWL		State: KANSAS	
SEC 12 TWP 5S RGE 33W		Offset Services:	
Permanent Chain: GROUND LEVEL Emission 3012		Emission: 05-3015	
Log Measured From: KELLY BUSHING		01-3012	
Date: 7-17-2019	Drilling Measured From: KELLY BUSHING		
Order Number: 4482	Depth Other: 4850		
Depth: 4850	Tool Casing Interval: 2830		
Casing Size: 5 1/2"	Valve: VALVER		
Type Hole Section: 3020	Estimated Cement Top: 3020		
Time Log on Bottom:	TK-8		
Equipment Number:	CHRYSLER HENDERSON		
Recorded By:	RAY BROWN		
Run Number:	10	Logging Record:	10
Borehole Record:	3522	Well ID:	100
THM:	7.78"	API:	4850
API:	209	Well ID:	100
Log Scale:	5.58"	Well ID:	100
Surface String:	5.72"	Well ID:	100
Bottom String:	15.58"	Well ID:	100
Bottom:	4850		

All interpretations are opinions based on inferences from electrical or other measurements and we cannot and do not guarantee the accuracy or correctness of any interpretation, and we shall not, except in the case of gross or willful negligence on our part, be liable or responsible for any loss, costs, damages, or expenses incurred or sustained by anyone resulting from any interpretation made by any of our officers, agents or employees. These interpretations are also subject to our general terms and conditions set out in our current Price Schedule.

Comments

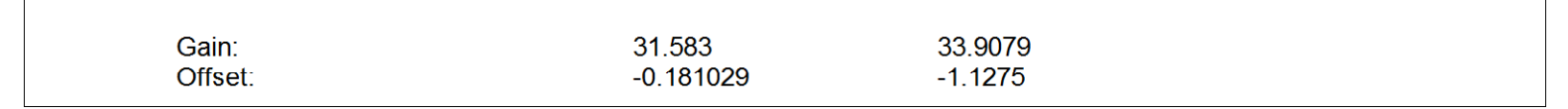
MAIN PASS

Database File: cooper112.db
 Dataset Pathname: pass2
 Presentation Format: cbldlg
 Dataset Creation: Wed Jul 17 11:43:14 2019 by Log Std Casedhole 10071
 Charted by: Depth in Feet scaled 1:240



REPEAT SECTION

Database File: cooper112.db
 Dataset Pathname: pass1
 Dataset Creation: Wed Jul 17 11:38:44 2019 by Log Std Casedhole 10071
 Charted by: Depth in Feet scaled 1:240



Calibration Report

Database File: cooper112.db
 Dataset Pathname: pass1
 Dataset Creation: Wed Jul 17 11:38:44 2019 by Log Std Casedhole 10071

Gamma Ray Calibration Report

Serial Number: 061120GR
 Tool Model: PROBE
 Performed: Wed Jul 17 11:39:10 2019
 Calibrator Value: 1.0 GAPI
 Background Reading: 0.0 cps
 Calibrator Reading: 1.0 cps
 Sensitivity: 1.0000 GAPI/cps

Cement Bond Log Calibration Report

Serial Number: 5.5dig940201
 Tool Model: Probe275Digital
 Performed: Wed Jul 17 11:29:12 2019
 Depth: 0 ft
 Casing Diameter: 5.5 in
 3' Spacing
 5' Spacing

Signal Zero: 0.25 mV
 Calibrated Amplitude: 71.921 mV
 Reading at Signal Zero: 0.0136475 V
 Reading in Free Pipe: 2.28294 V
 Gain: 31.583 33.9079
 Offset: -0.181029 -1.1275