

SONIC LOG

Company MULL DRILLING COMPANY, INC.
Well #1-12 COOPER
Field WILDCAT
County RAWLINS
State KANSAS

Company MULL DRILLING COMPANY, INC.
Well #1-12 COOPER
Field WILDCAT
County RAWLINS
State KANSAS

Location: API # : 15-153-21232-0000
Permanent Datum GROUND LEVEL Elevation 3012
Log Measured From KELLY BUSHING 5' A.G.L.
Drilling Measured From KELLY BUSHING
SEC 12 TWP 5S RGE 33W
Elevation
K.B. 3017
D.F. 3015
G.L. 3012

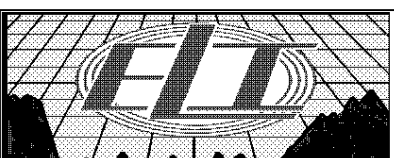
Date	7/5/19
Run Number	TWO
Depth Driller	4550
Depth Logger	4552
Bottom Logged Interval	4544
Top Log Interval	200
Casing Driller	8 5/8"@209'
Casing Logger	209
Bit Size	7 7/8"
Type Fluid in Hole	CHEMICAL MUD
Density / Viscosity	9.1/59
pH / Fluid Loss	11.0/7.2
Source of Sample	FLOWLINE
Rim @ Meas. Temp	.640@98F
Rmf @ Meas. Temp	.480@98F
Rmc @ Meas. Temp	.768@98F
Source of Rmf / Rmc	MEASUREMENT
Rim @ BHT	.518@121F
Time Circulation Stopped	4 HOURS
Time Logger on Bottom	4:15 A.M.
Maximum Recorded Temperature	121F
Equipment Number	922339
Location	HAYS, KANSAS
Recorded By	JEFF LUEBBERS
Witnessed By	RUSTY MOURNING

<<< Fold Here >>>

All interpretations are opinions based on inferences from electrical or other measurements and we cannot and do not guarantee the accuracy or correctness of any interpretation, and we shall not, except in the case of gross or willful negligence on our part, be liable or responsible for any loss, costs, damages, or expenses incurred or sustained by anyone resulting from any interpretation made by any of our officers, agents or employees. These interpretations are also subject to our general terms and conditions set out in our current Price Schedule.

Comments

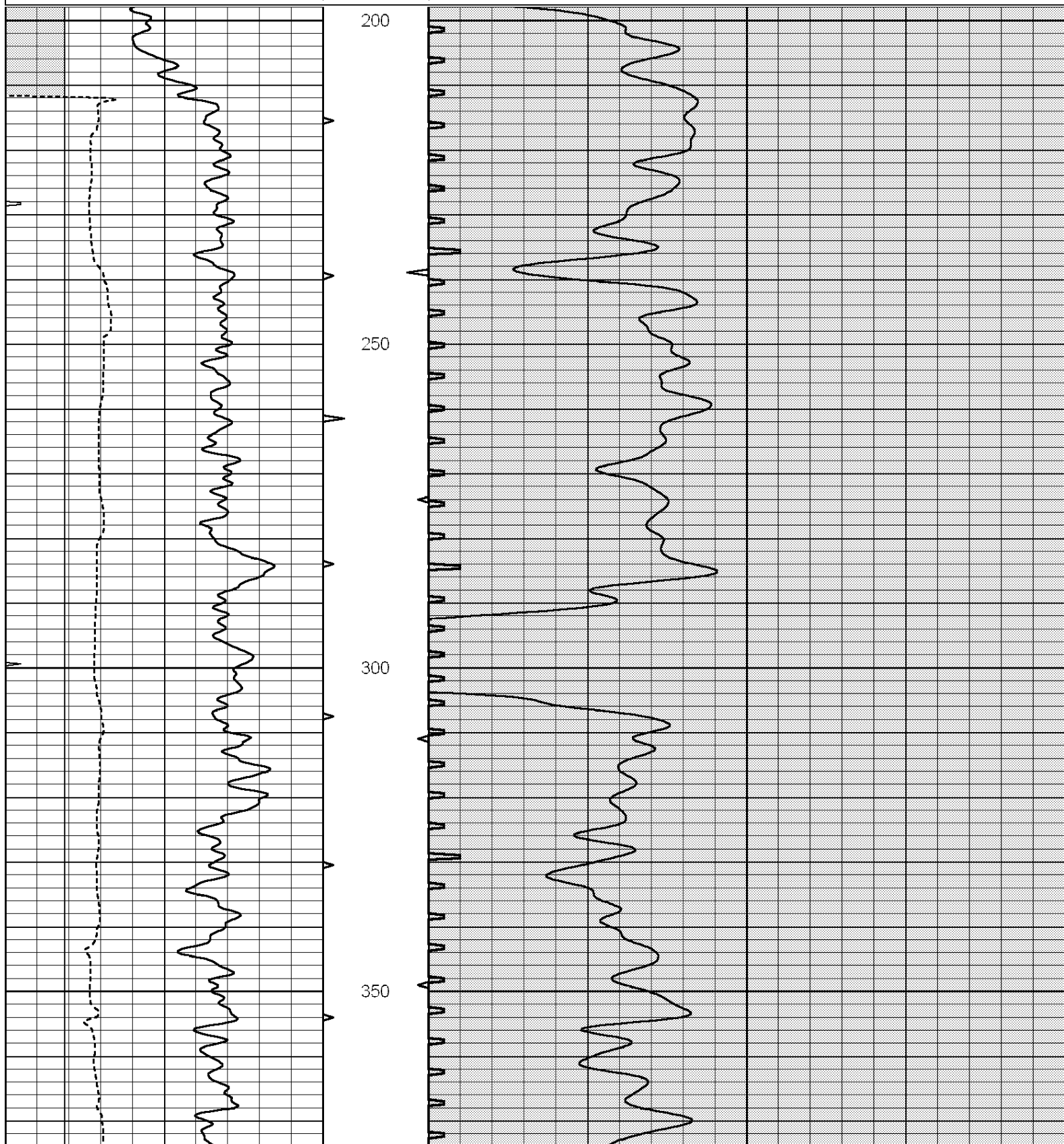
THANK YOU FOR USING ELI WIRELINE HAYS, KANSAS (785) 628-6395
DIRECTIONS
COLBY, KS. 17N. ON HWY 25 TO "RD. E", 3E. TO "RD. 23", 1N. TO "RD. F", 1 E., S. & E. INTO

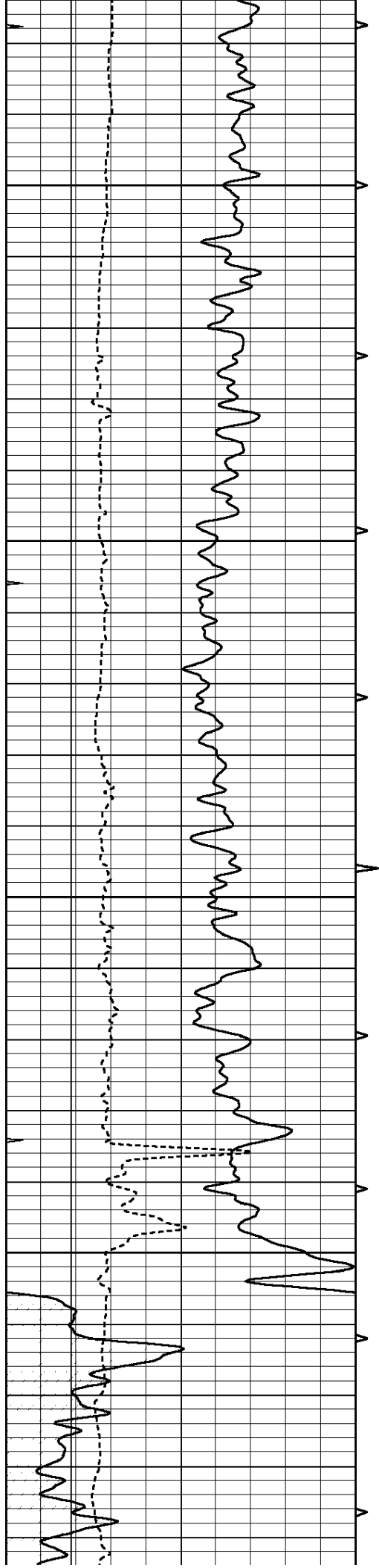


MAIN SECTION

Database File: 3739pe.db
 Dataset Pathname: pass6.2
 Presentation Format: slt
 Dataset Creation: Fri Jul 05 05:55:10 2019 by Calc SOC 120430
 Charted by: Depth in Feet scaled 1:240

0	GAMMA RAY (GAPI)	150	ABHV	140	DELTA TIME (usec/ft)	40
6	CALIPER (in)	16	10 (ft3)	0	30	SONIC POROSITY (pu)
0	MINMK	20	TBHV	0	ITT (msec)	20
			0 (ft3)	10		



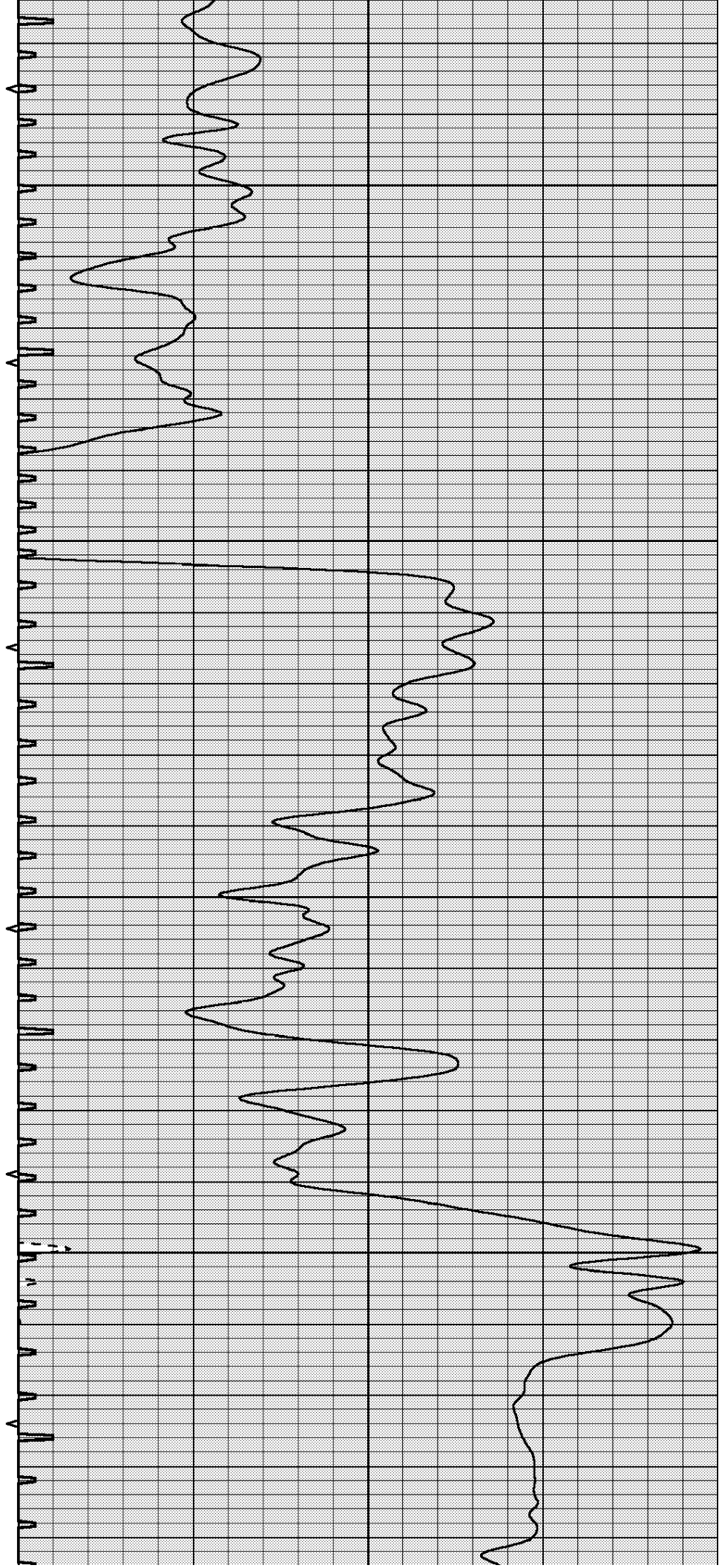


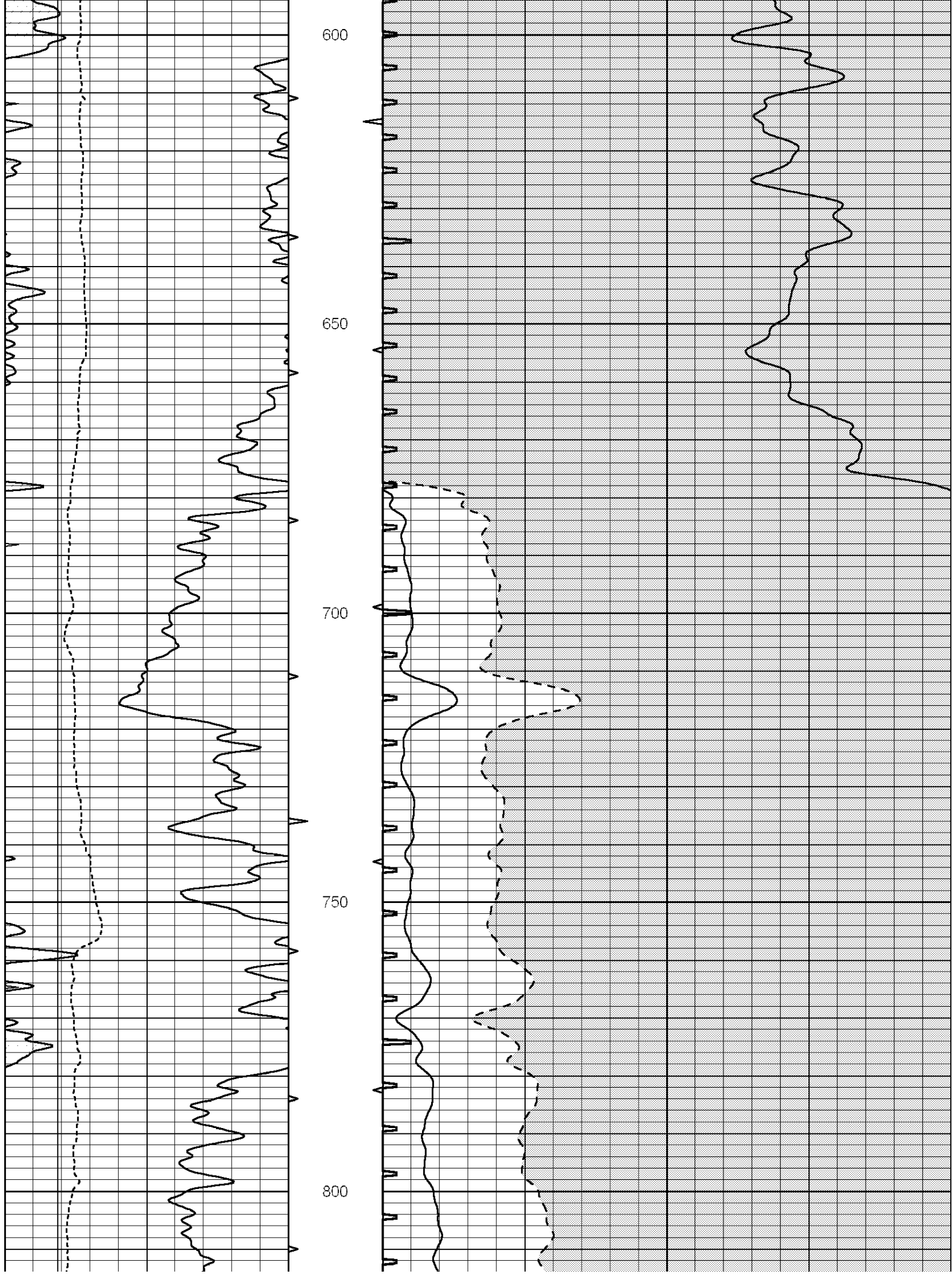
400

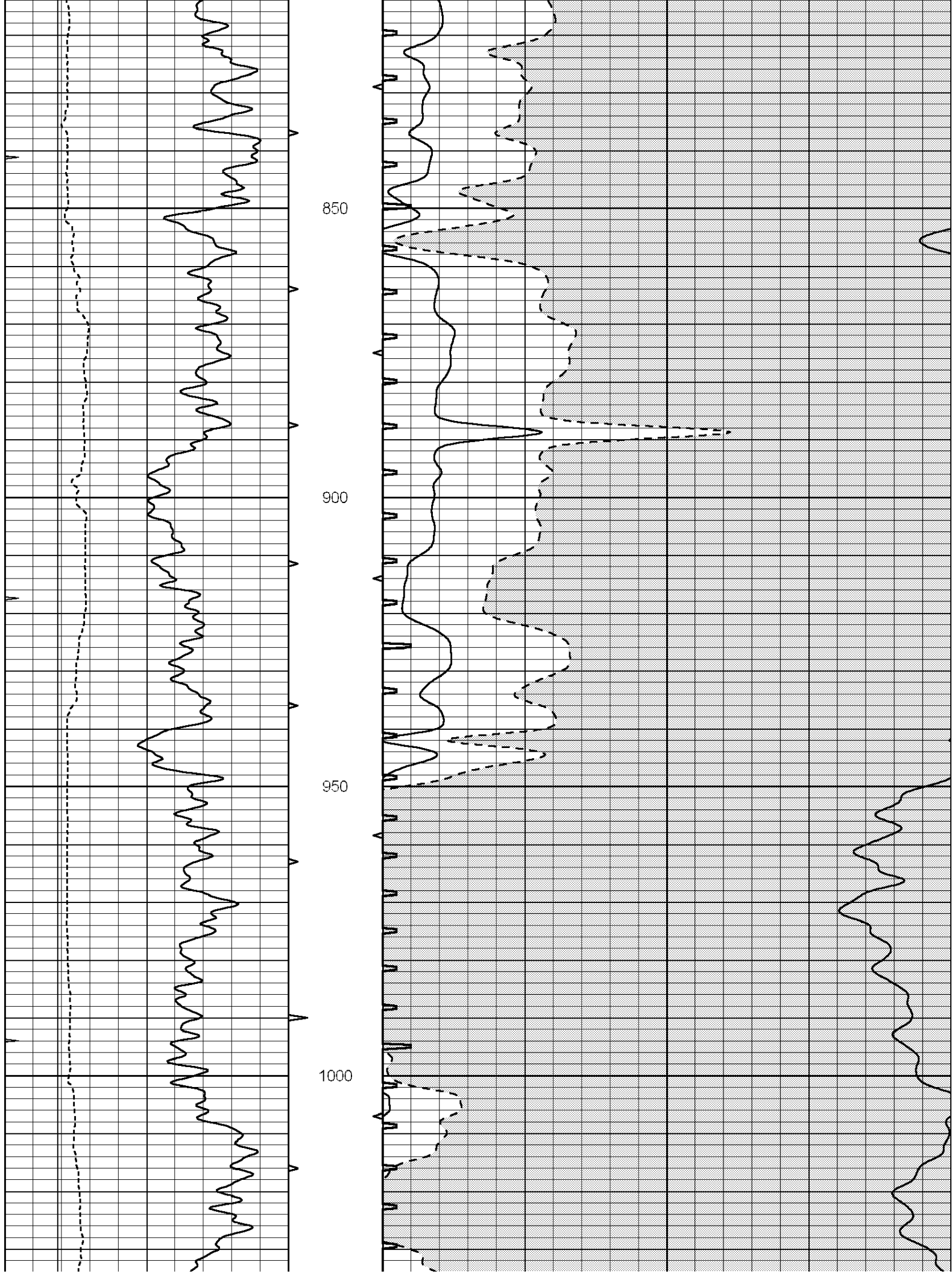
450

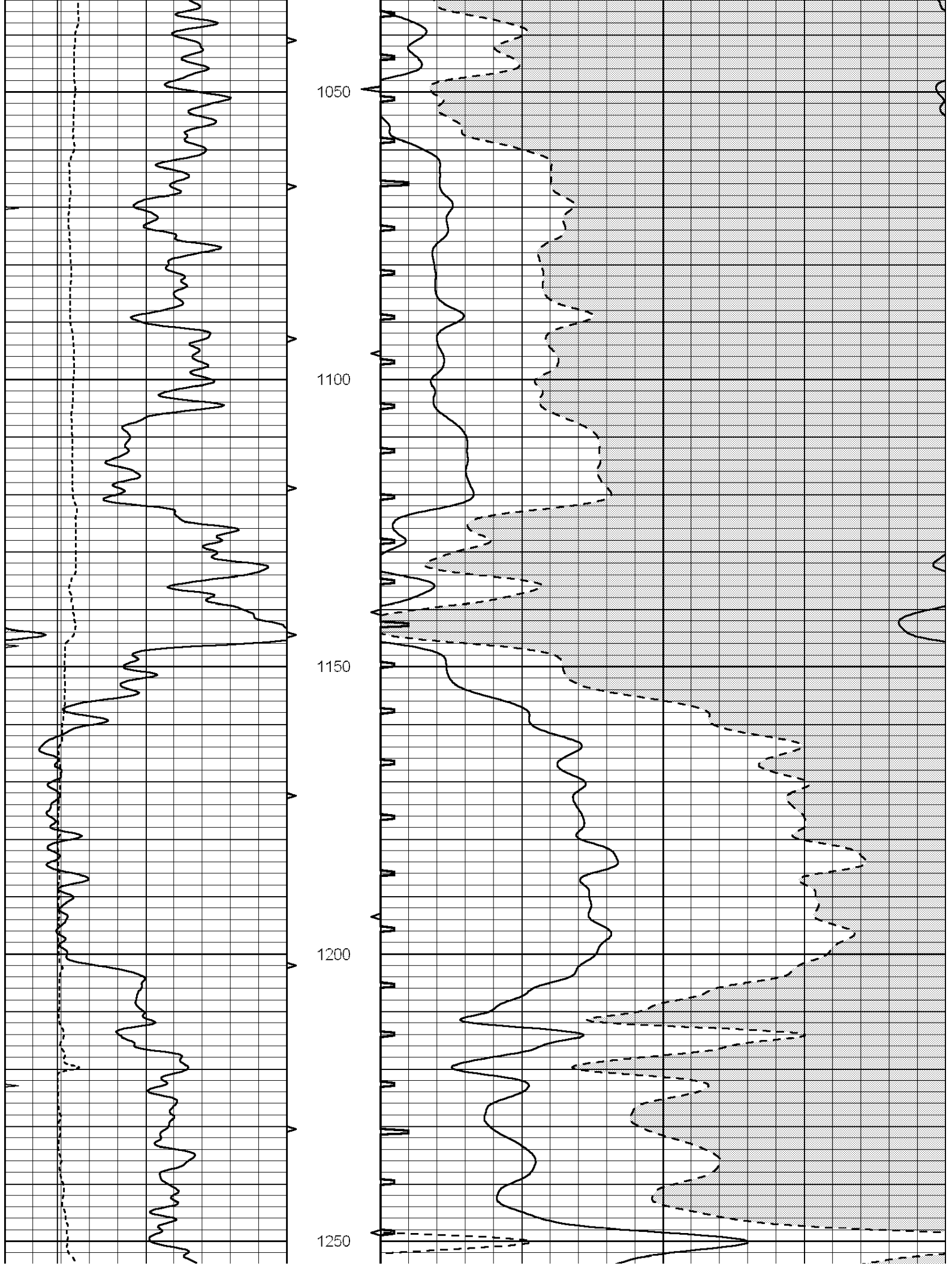
500

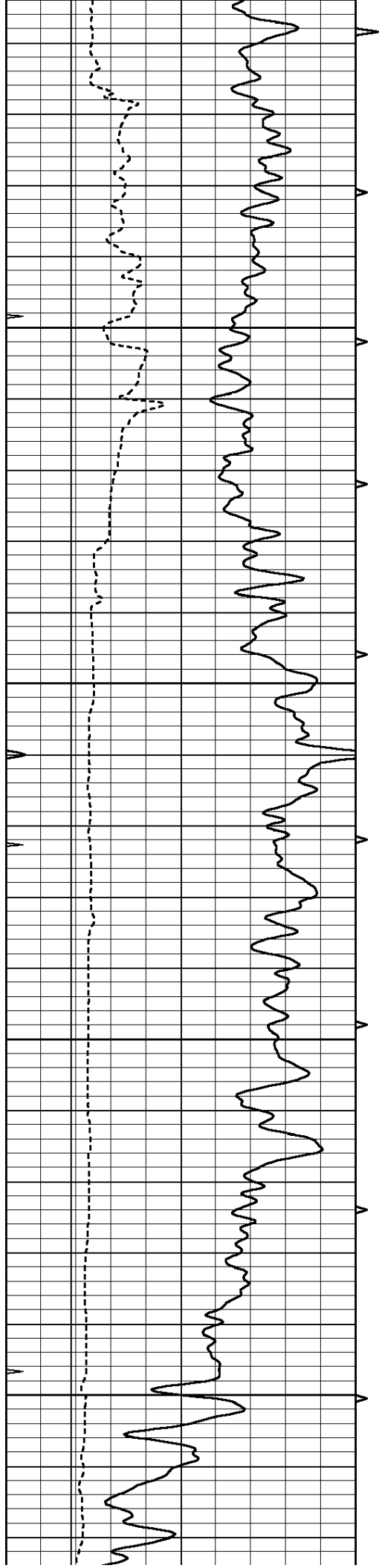
550









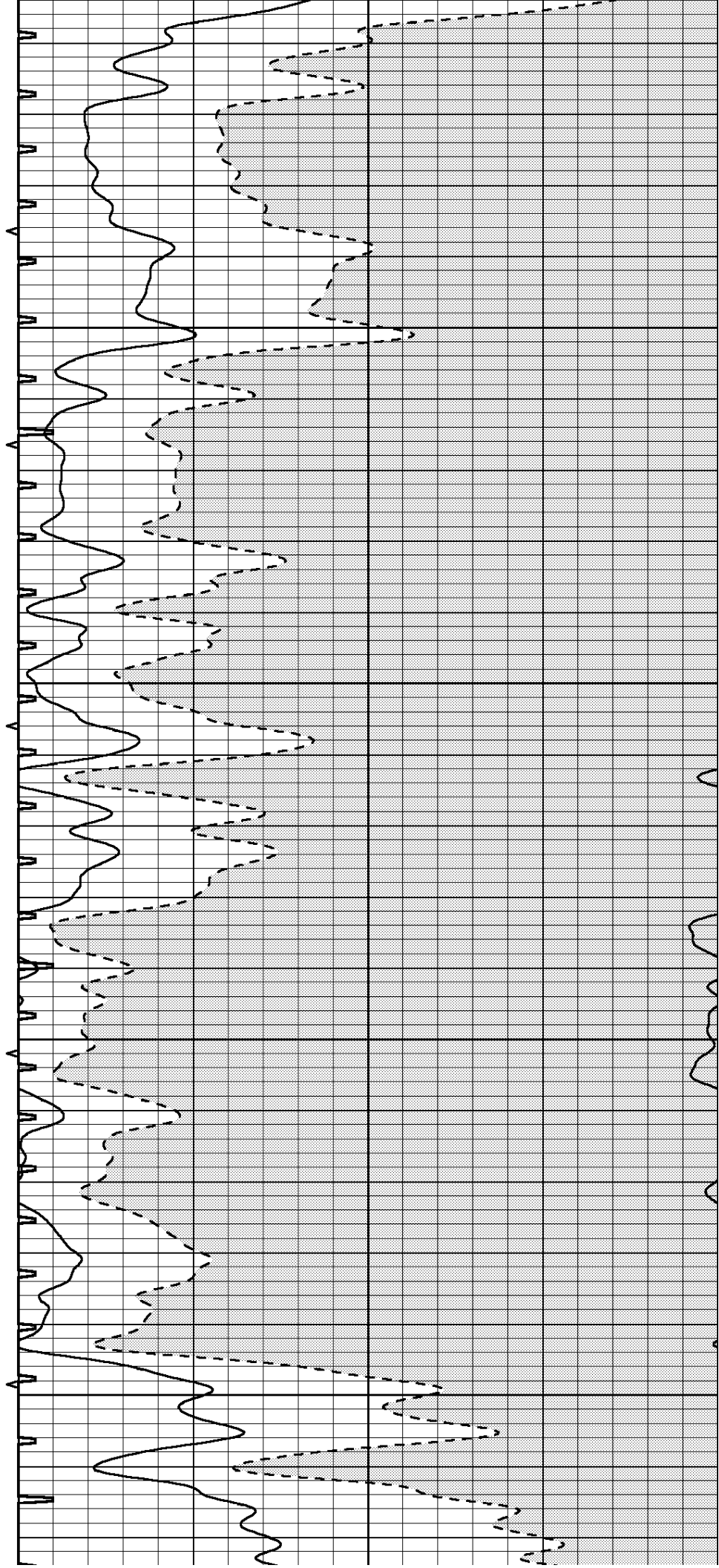


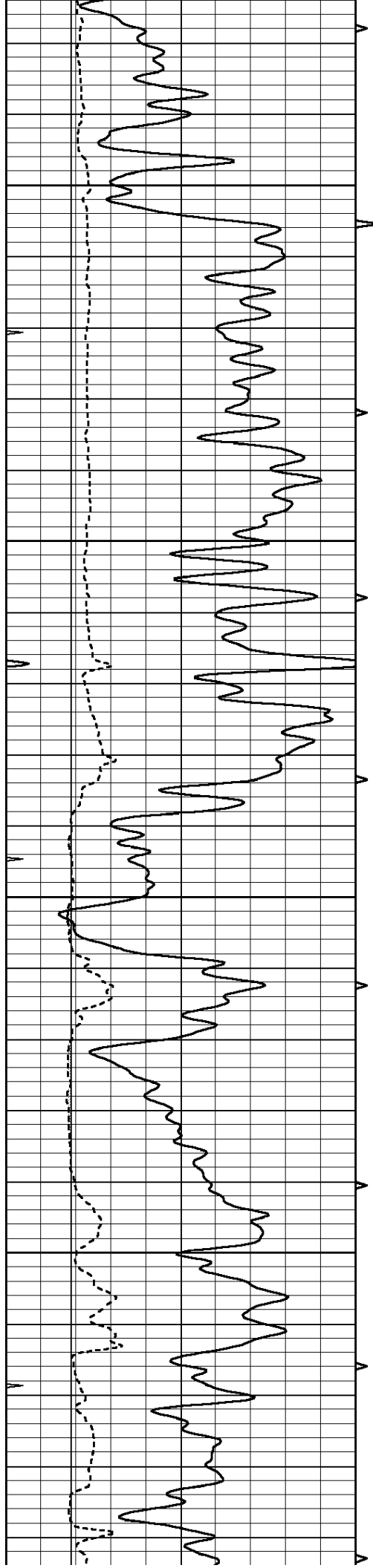
1300

1350

1400

1450



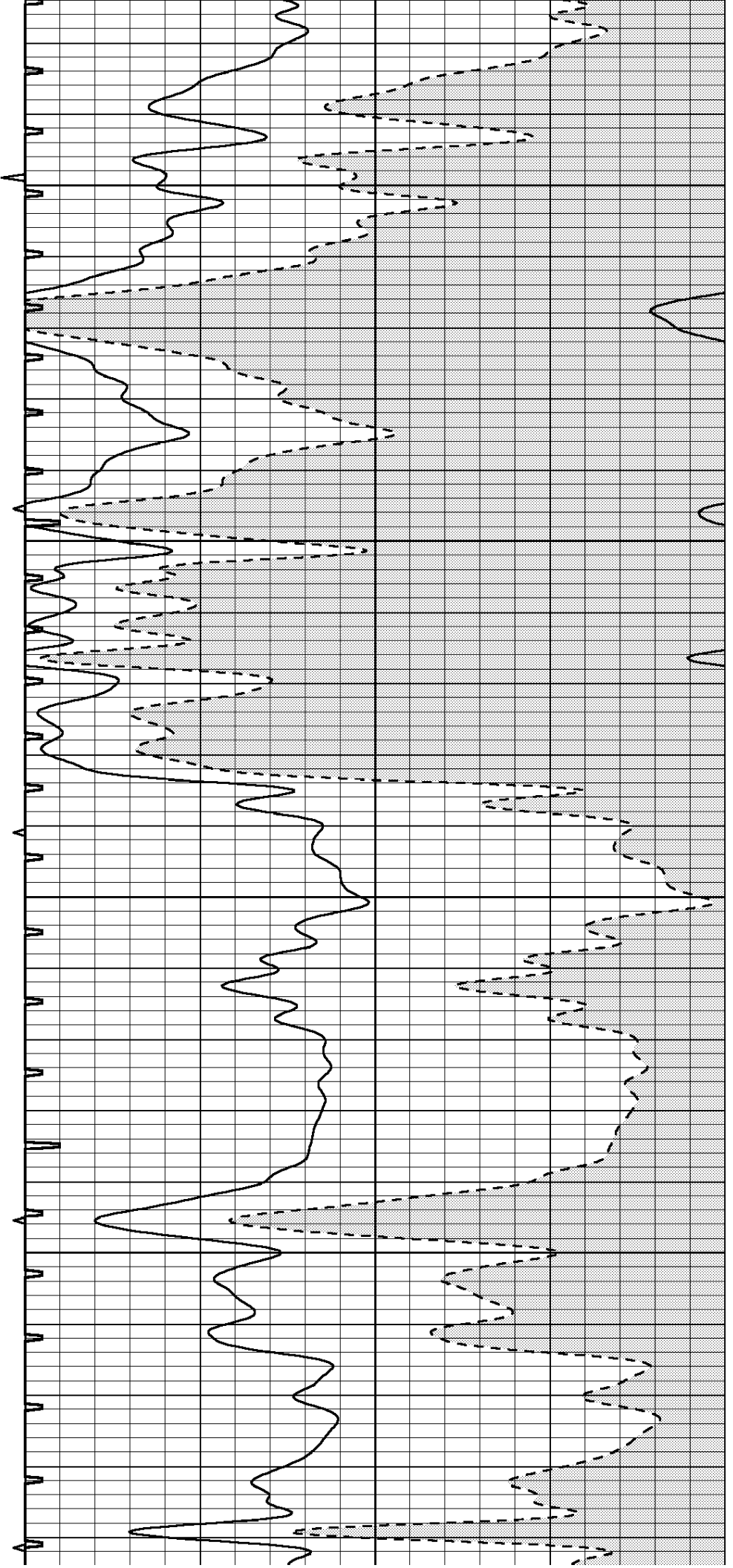


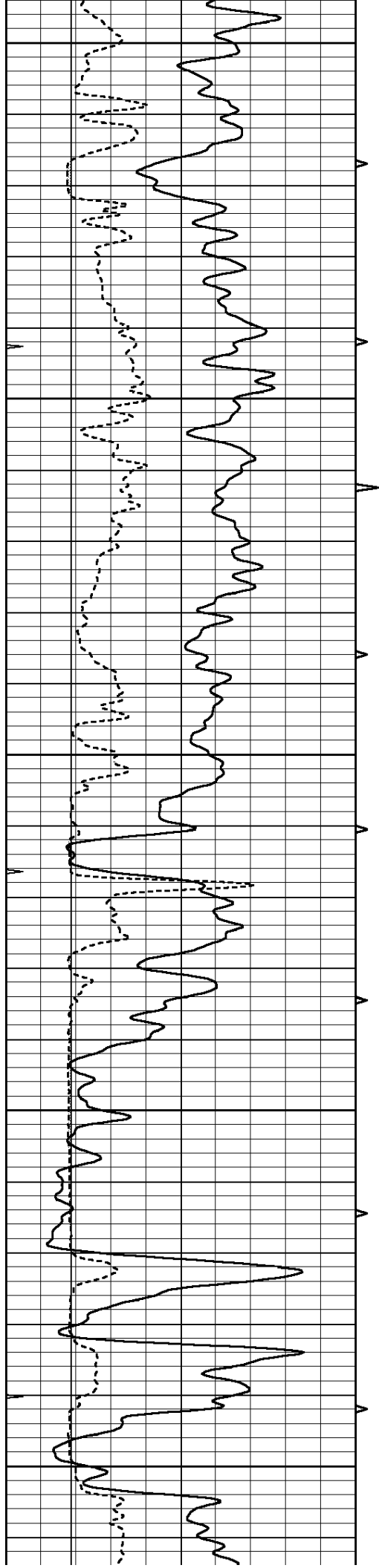
1500

1550

1600

1650





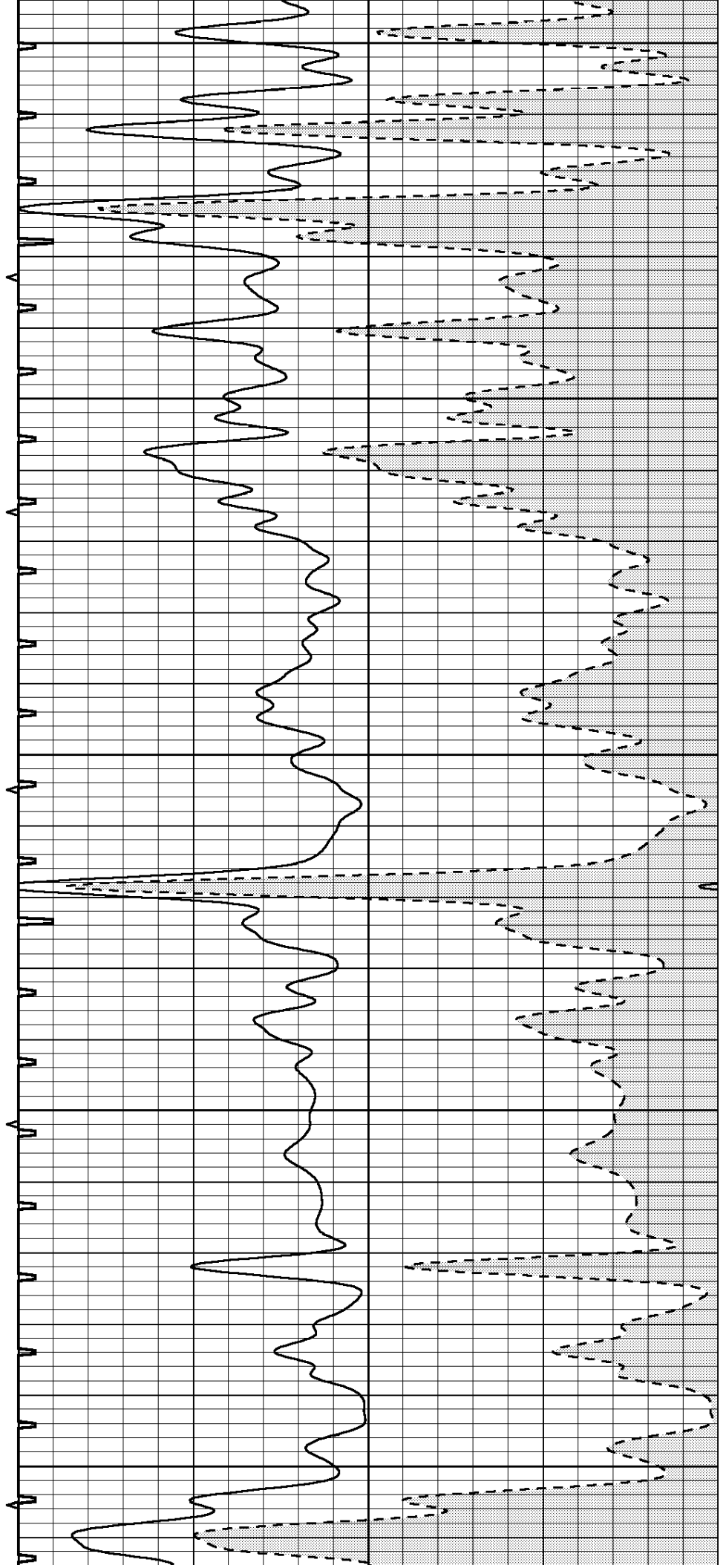
1700

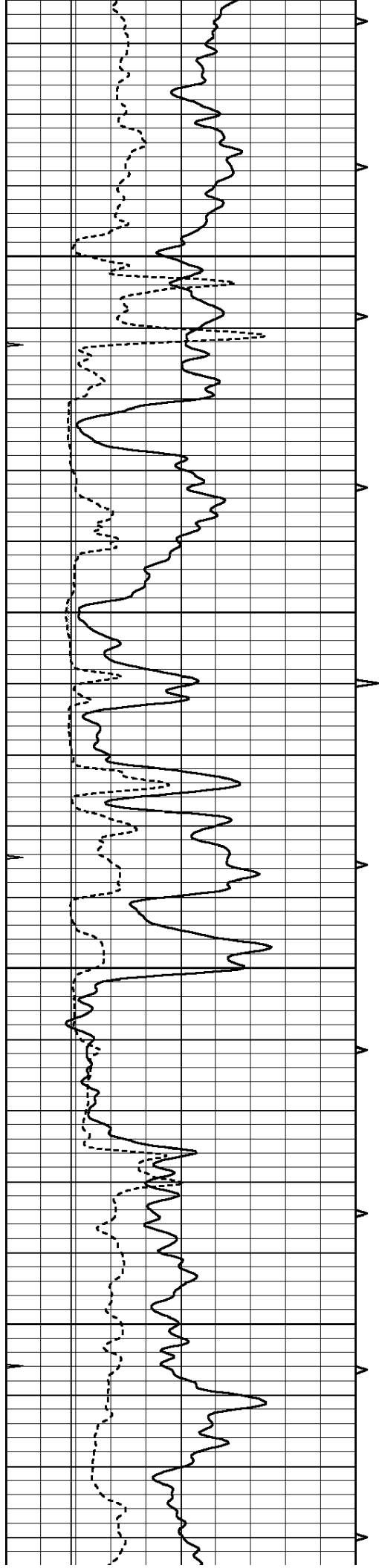
1750

1800

1850

1900



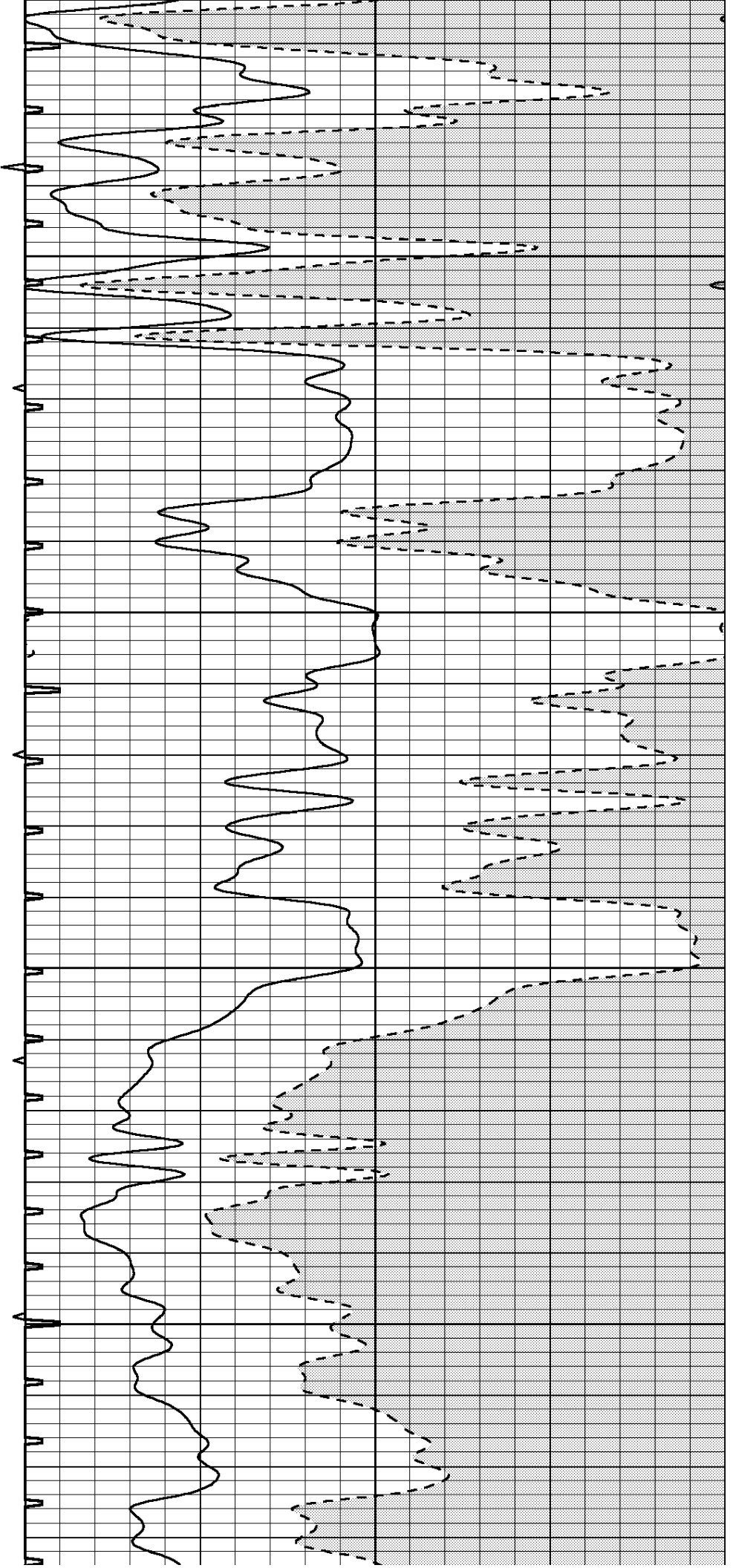


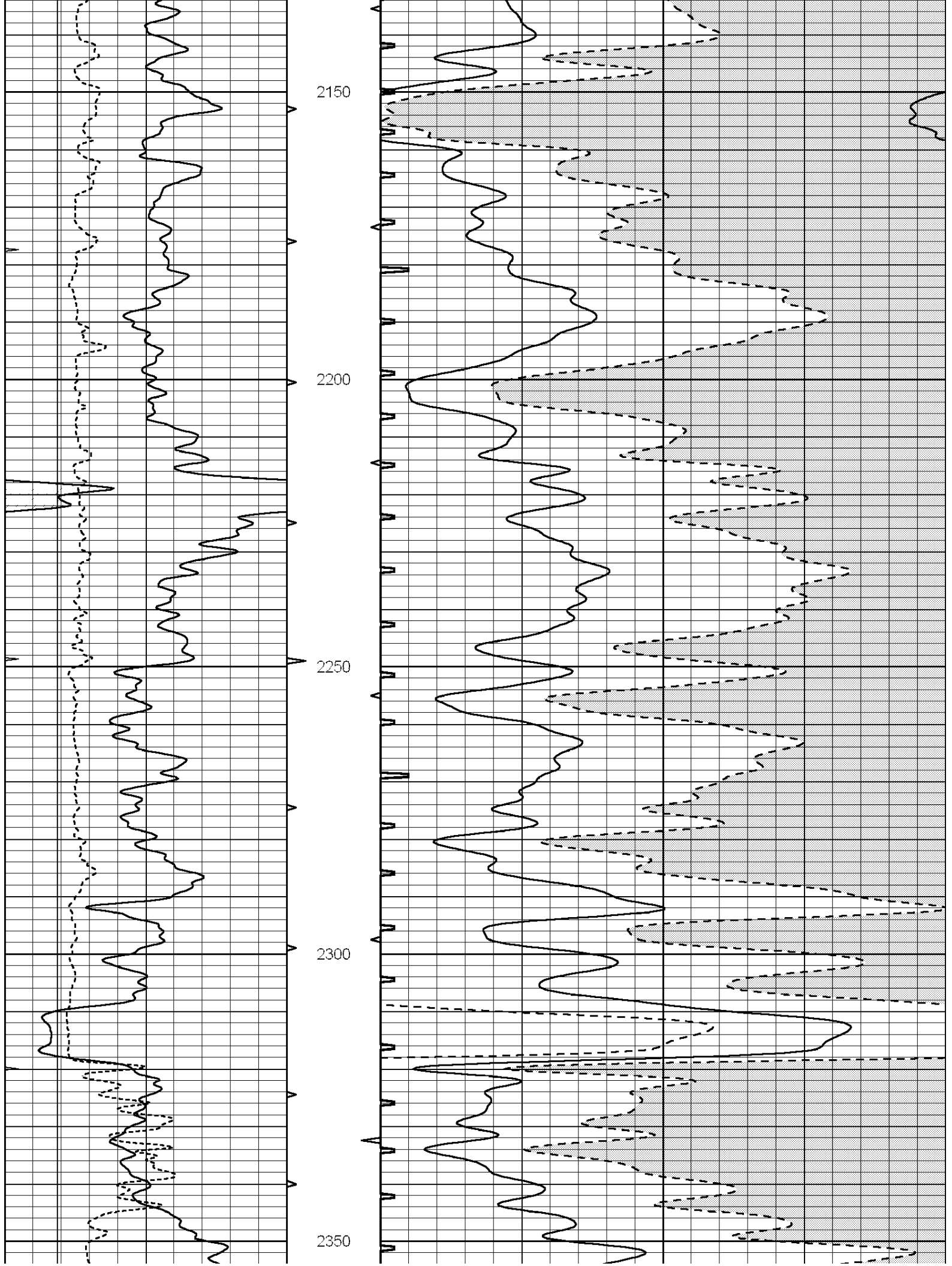
1950

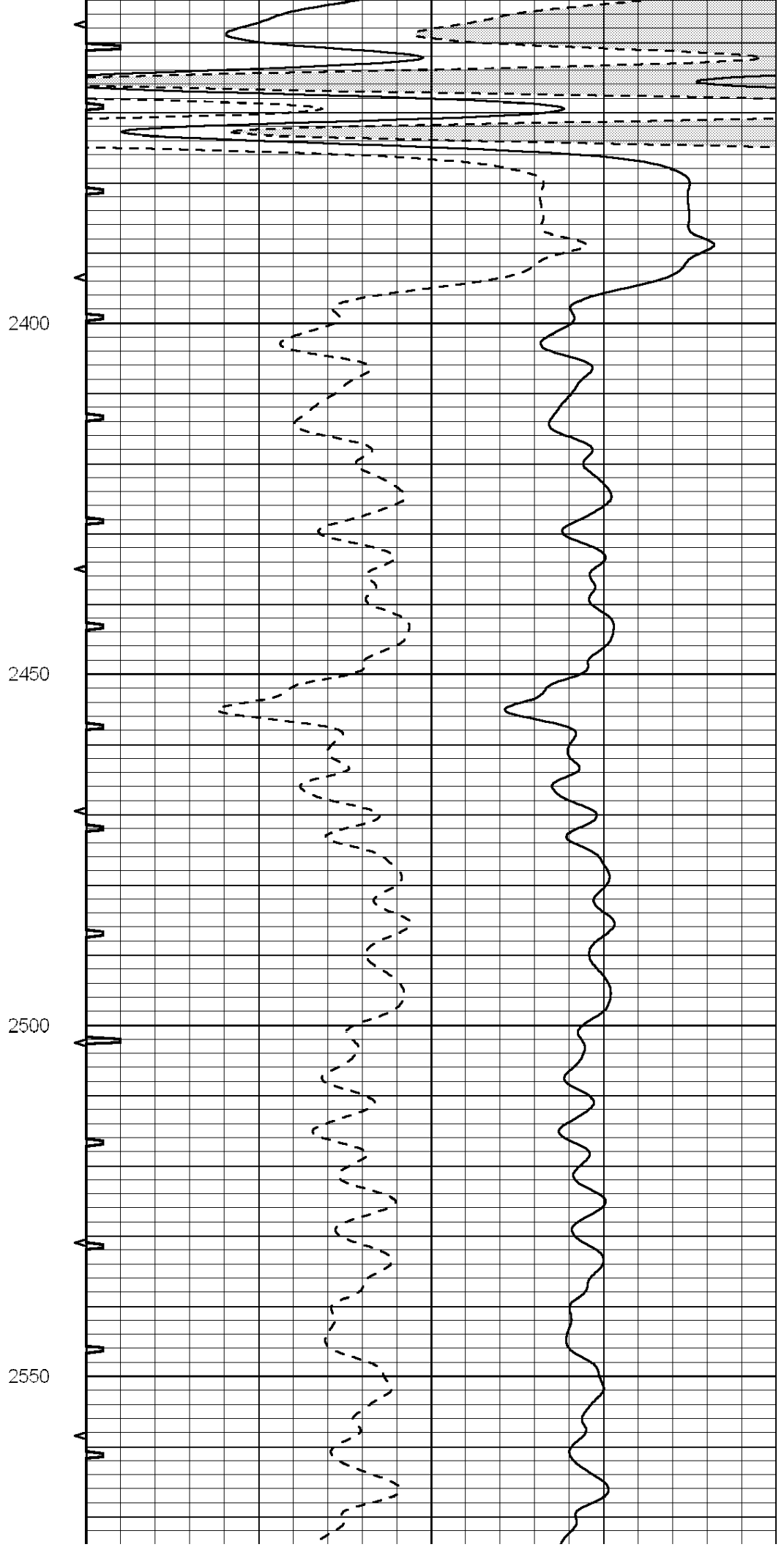
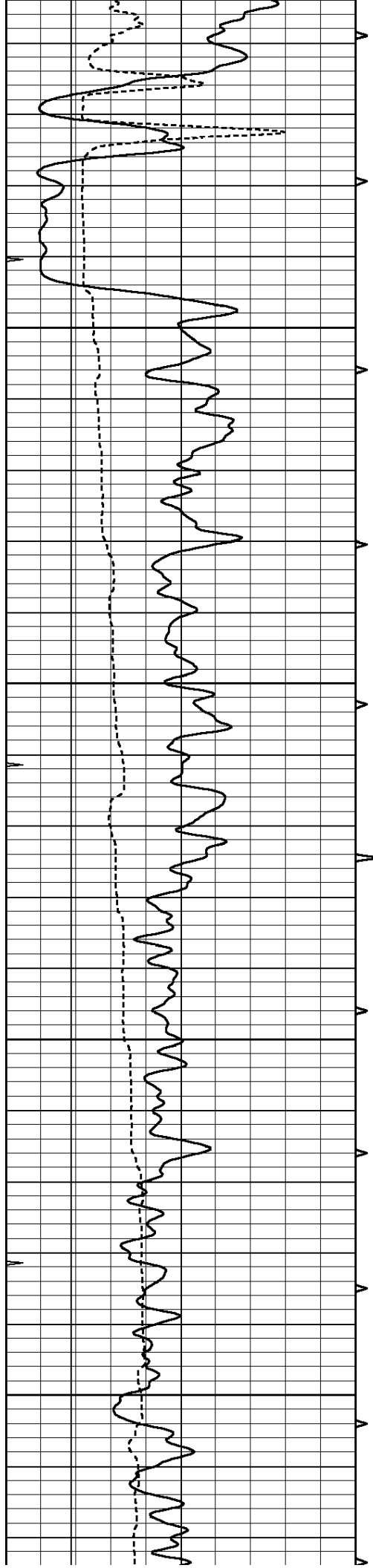
2000

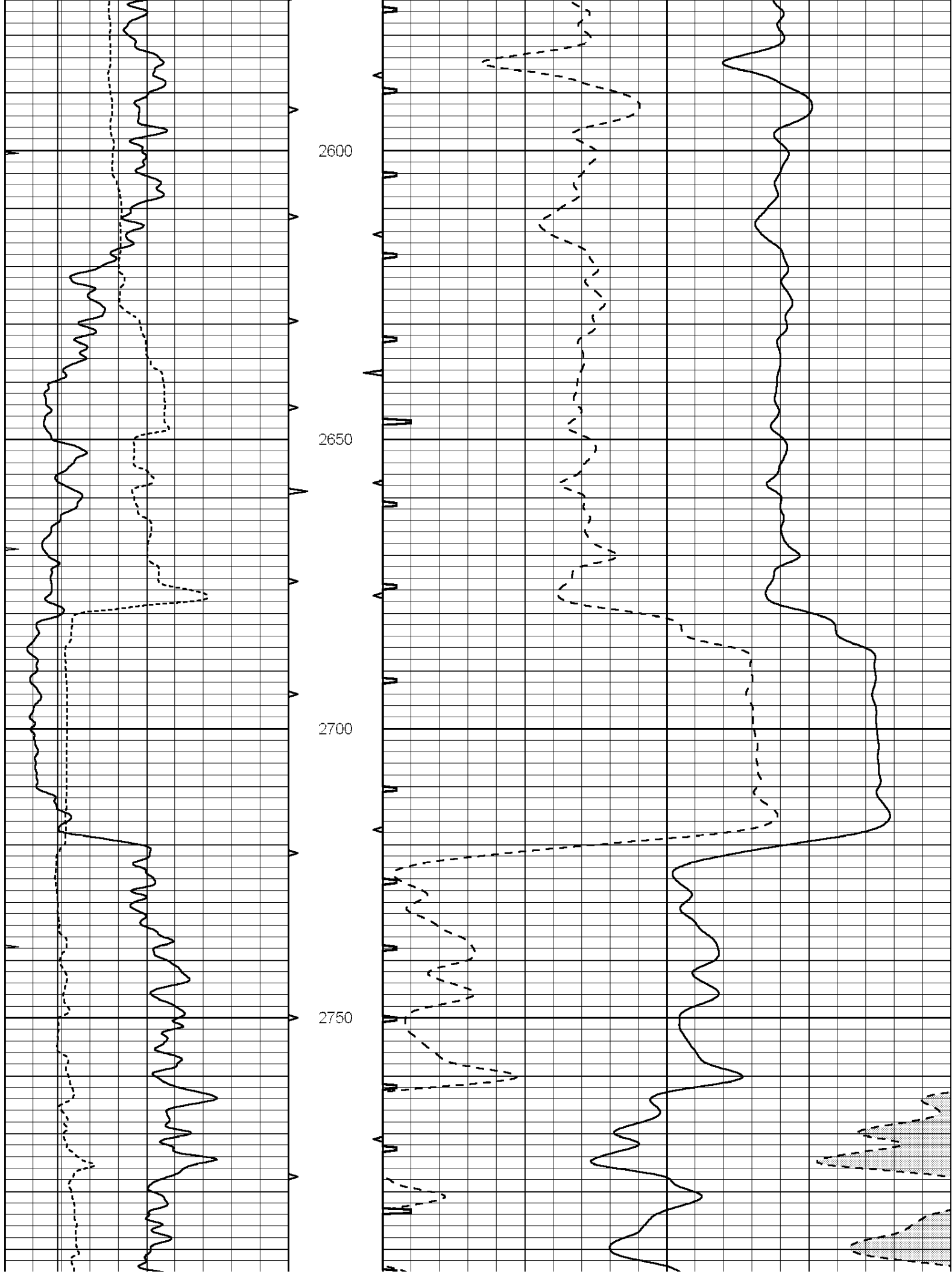
2050

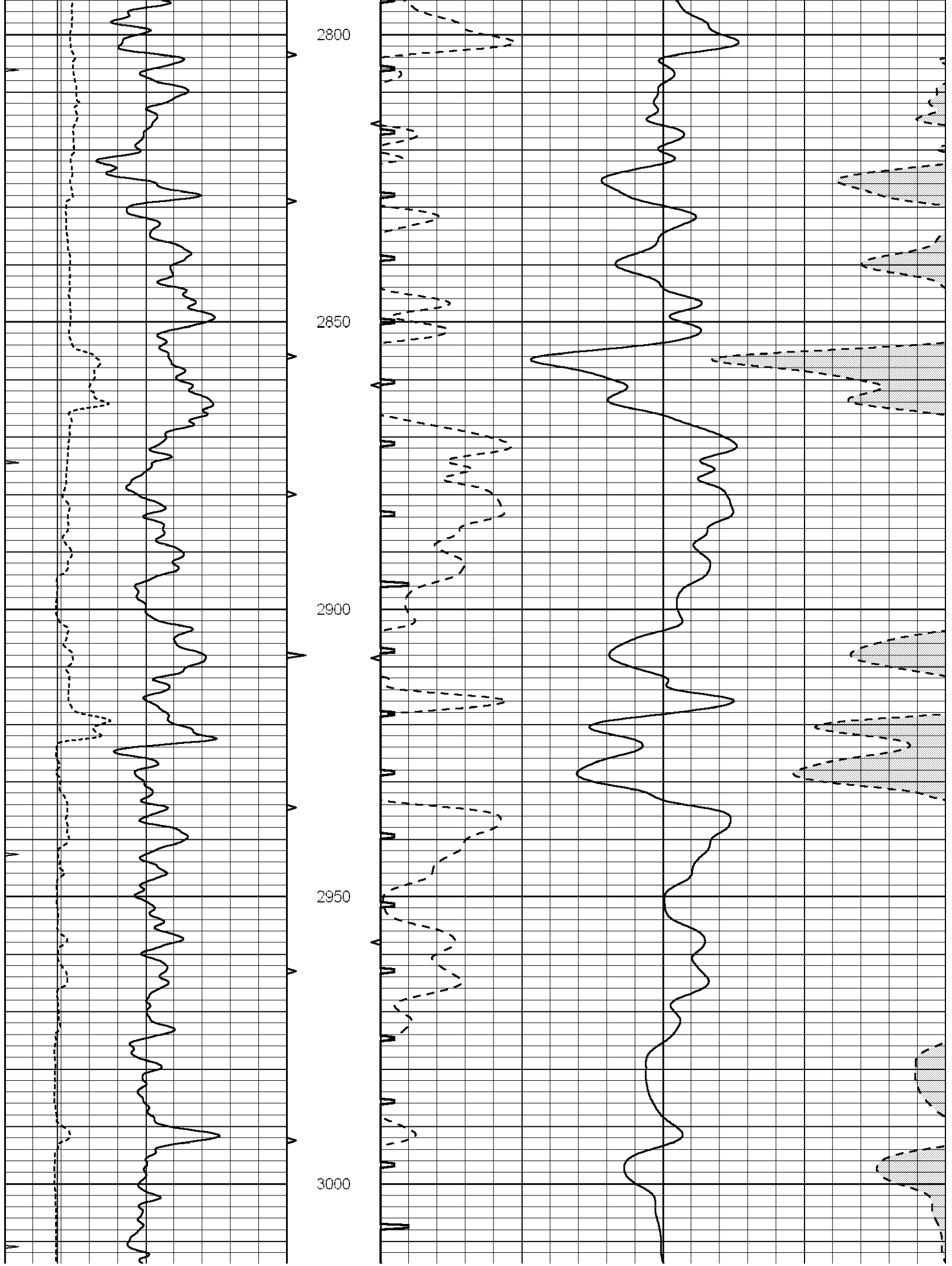
2100

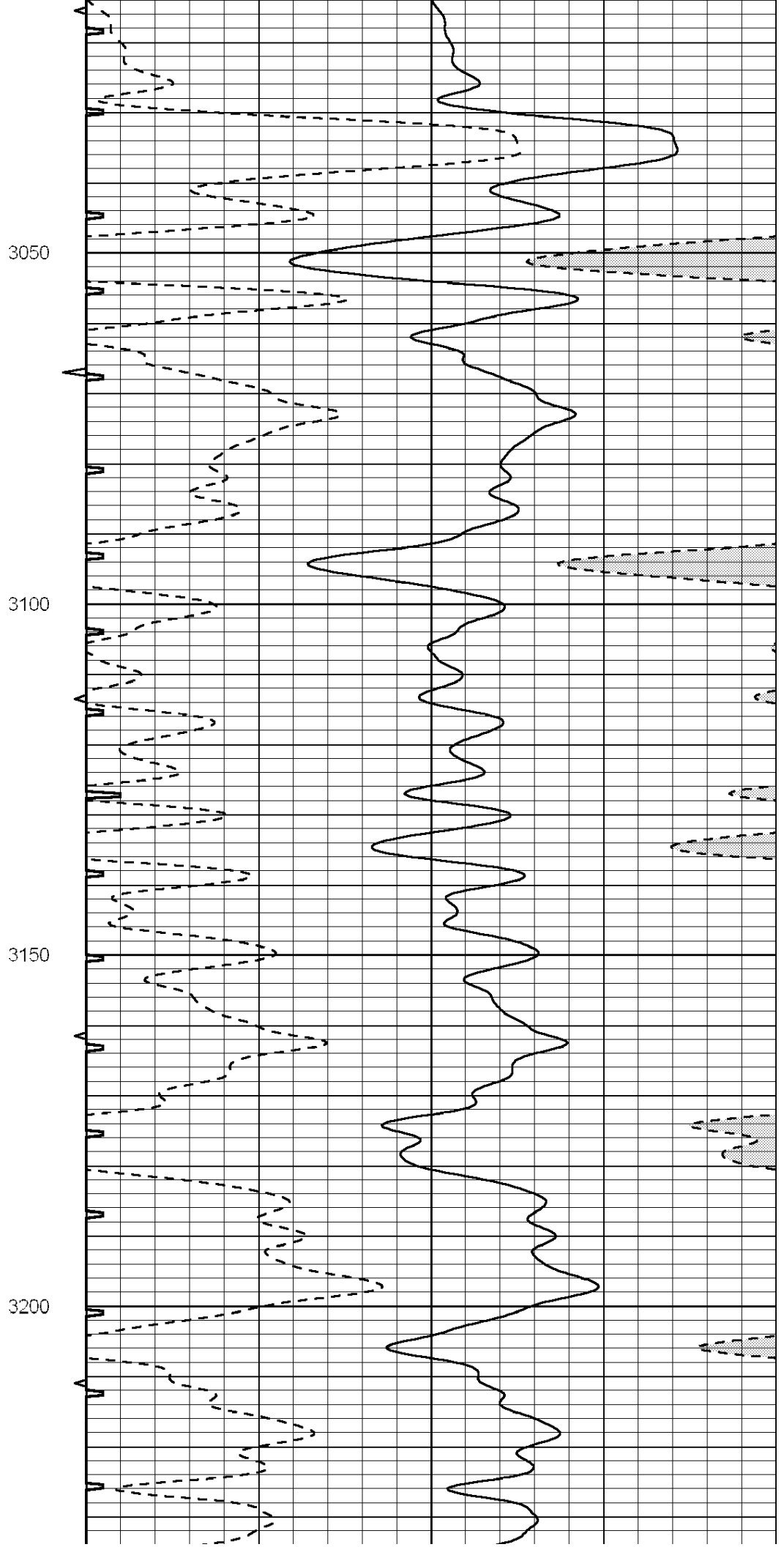
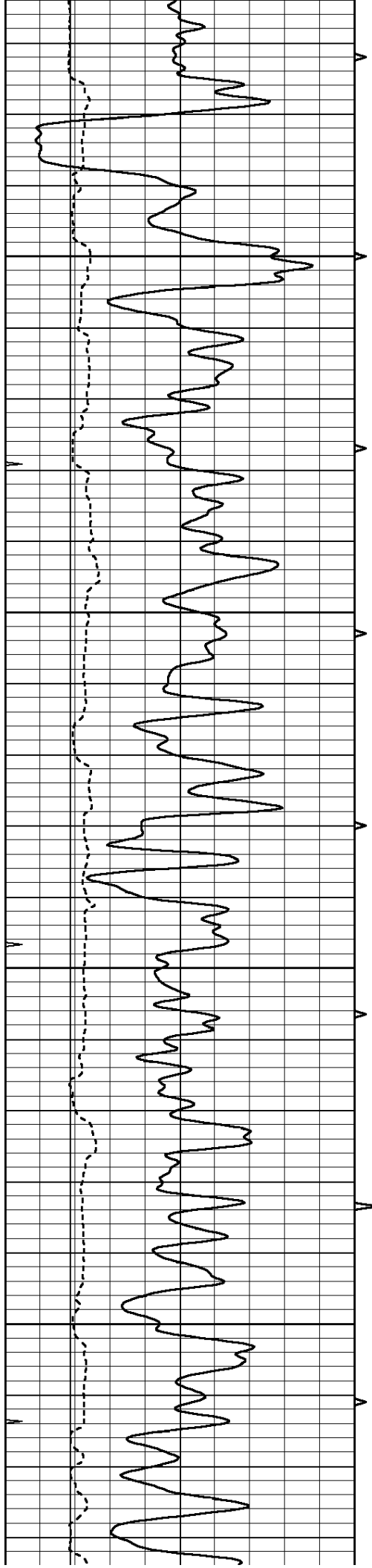


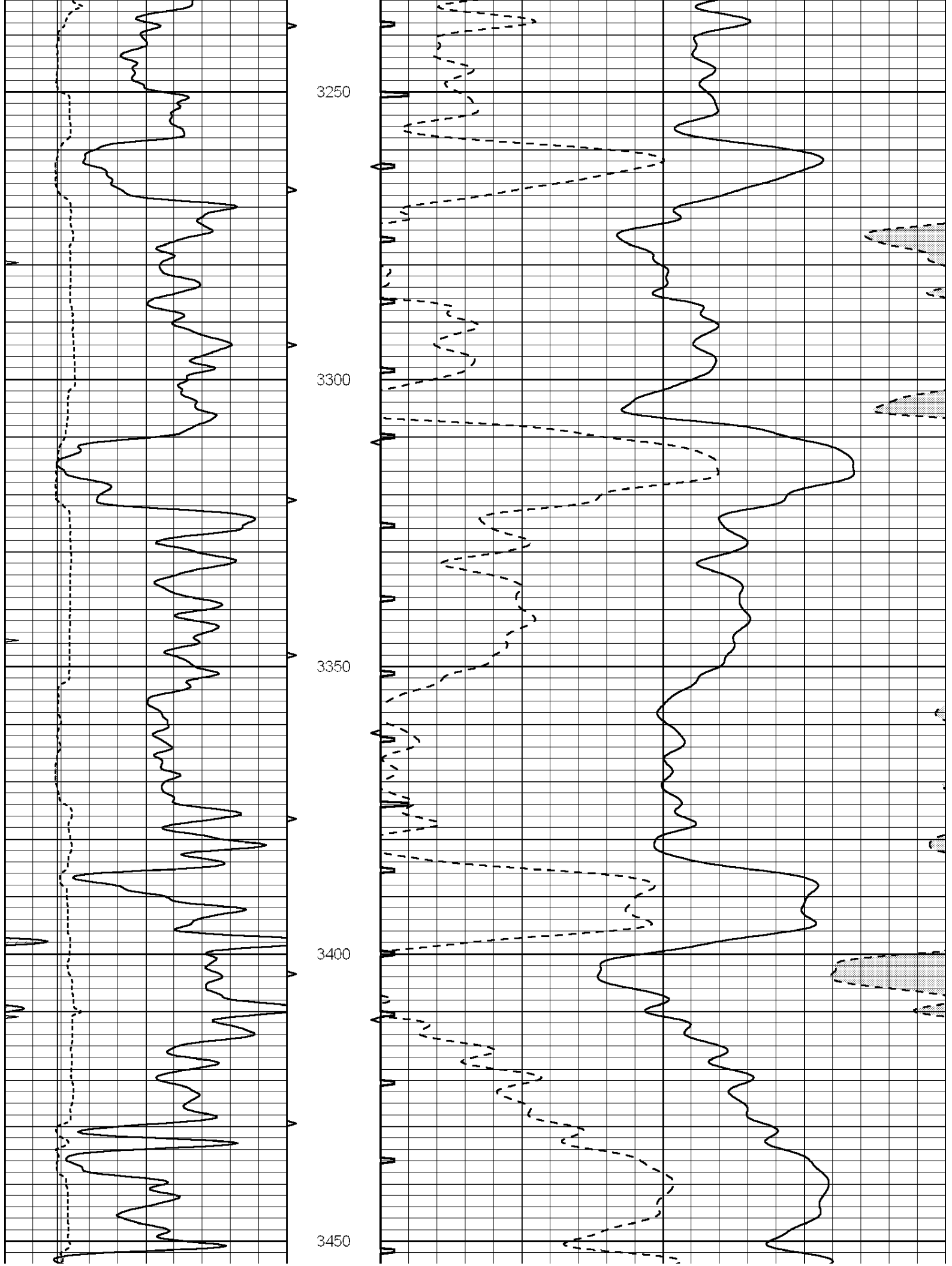


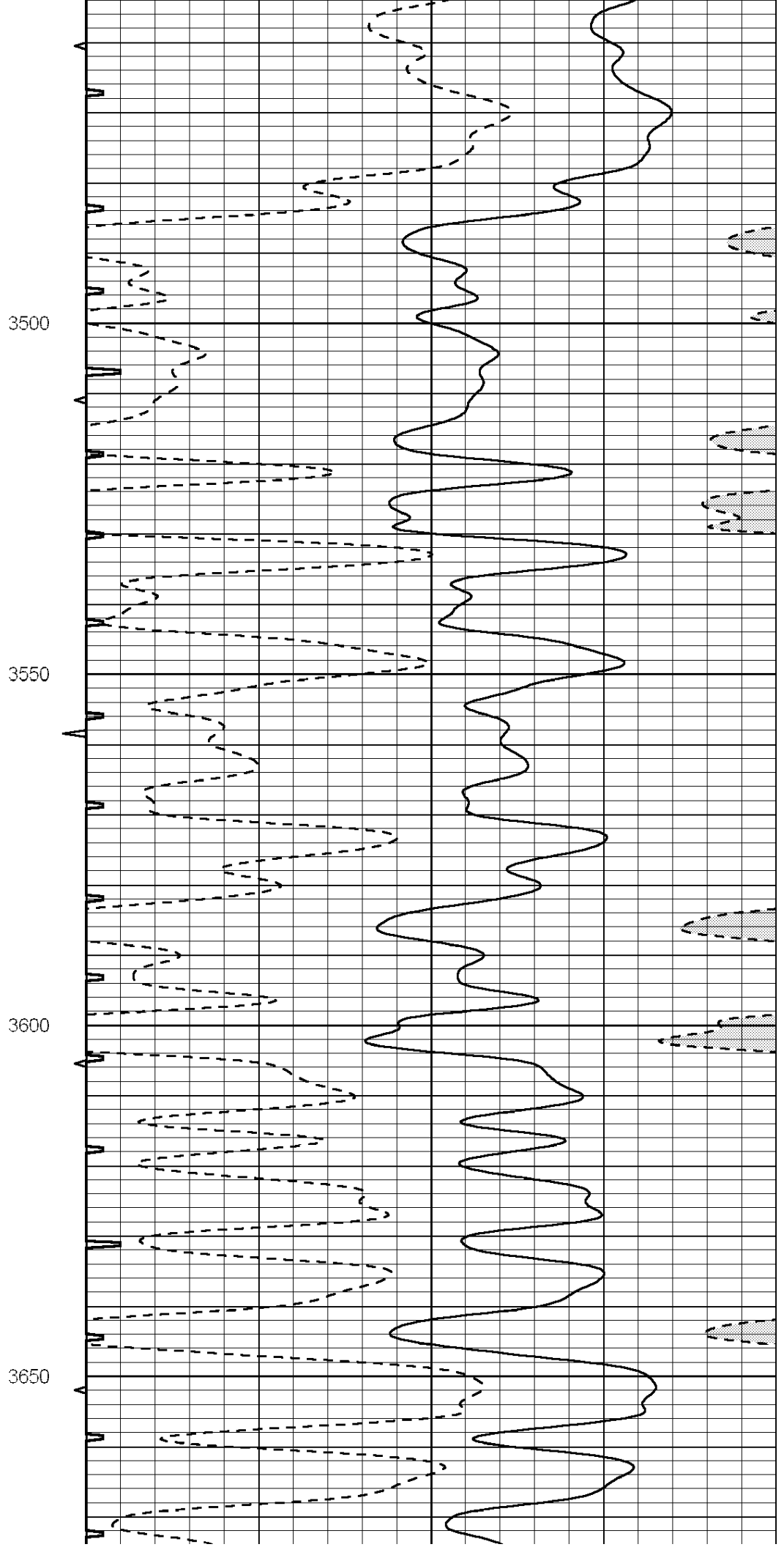
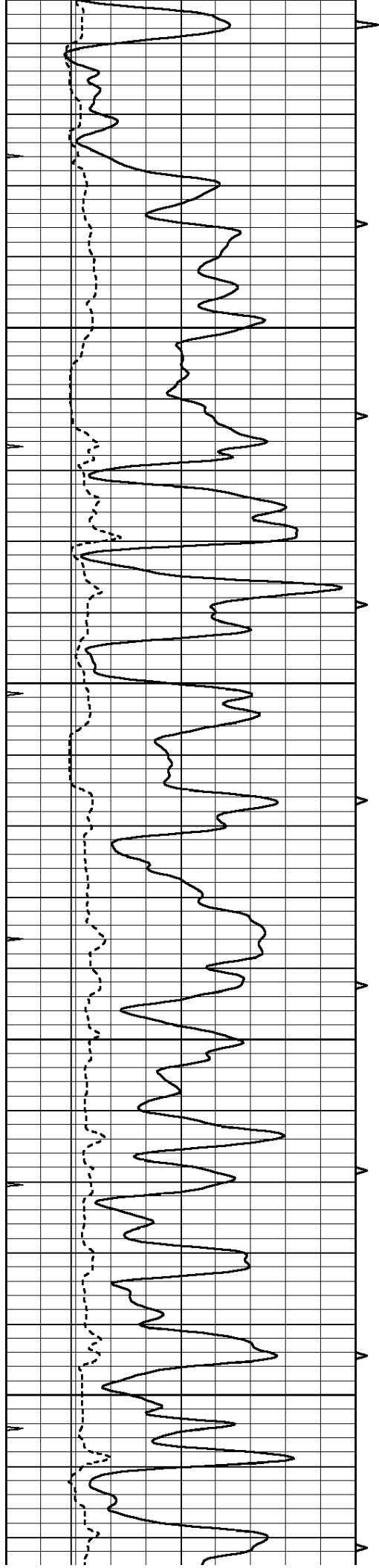


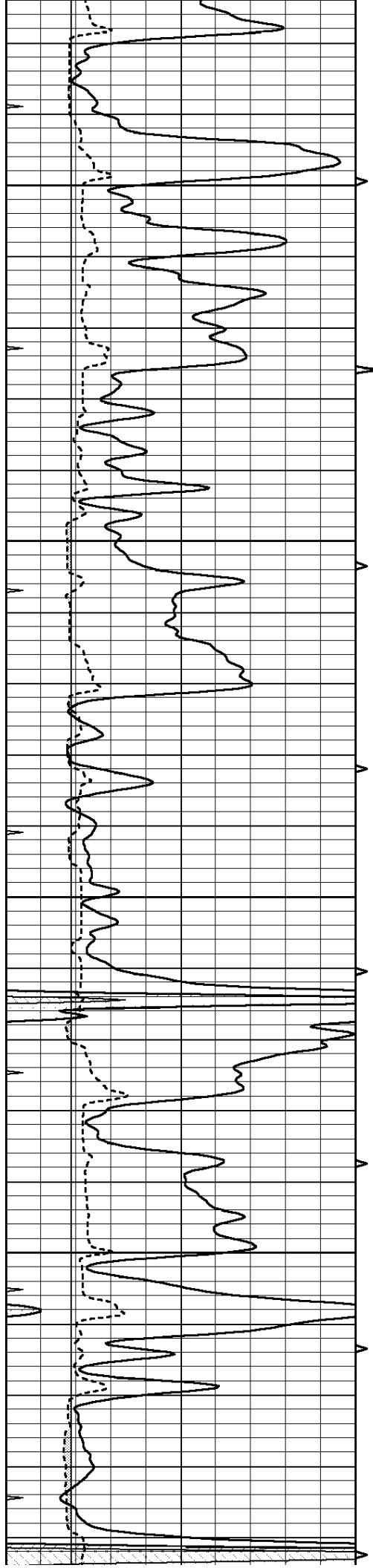










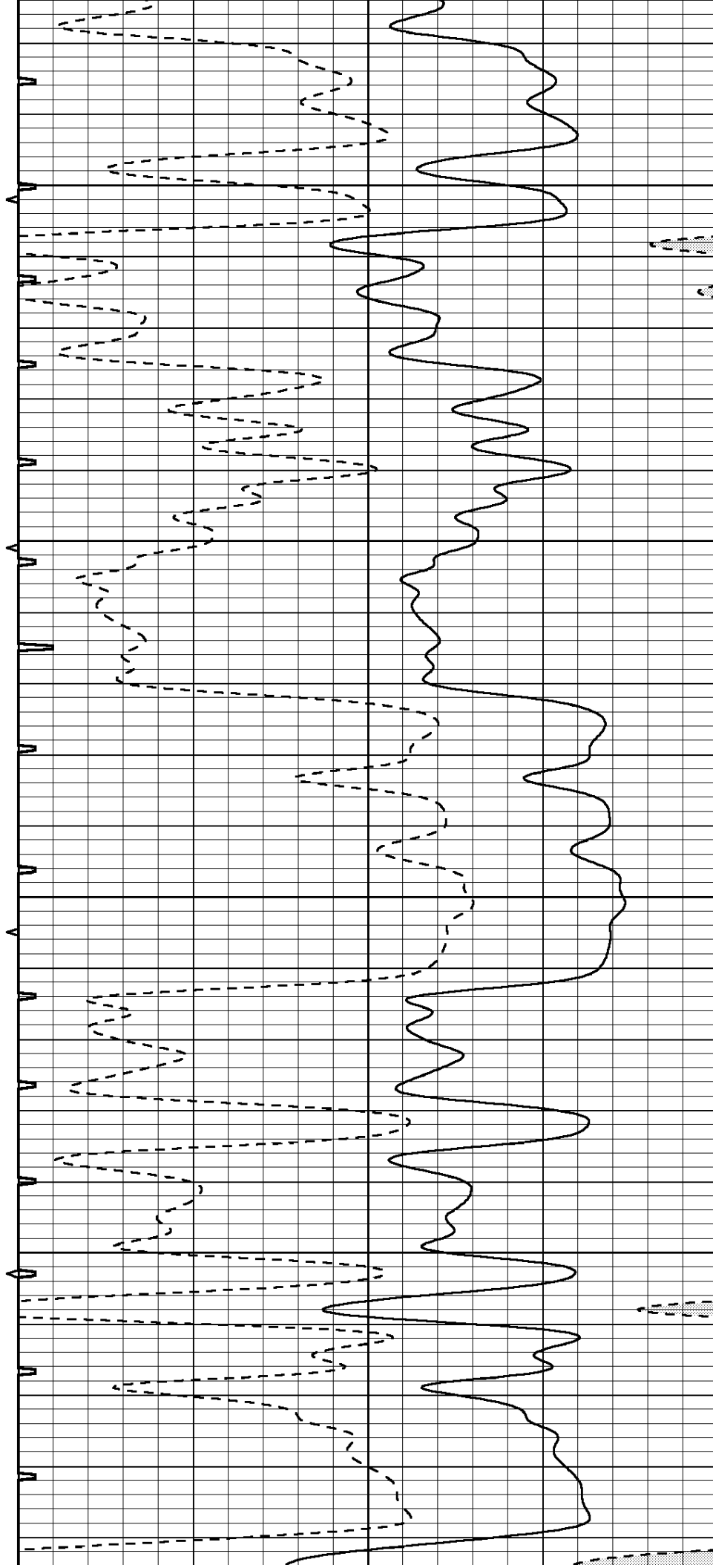


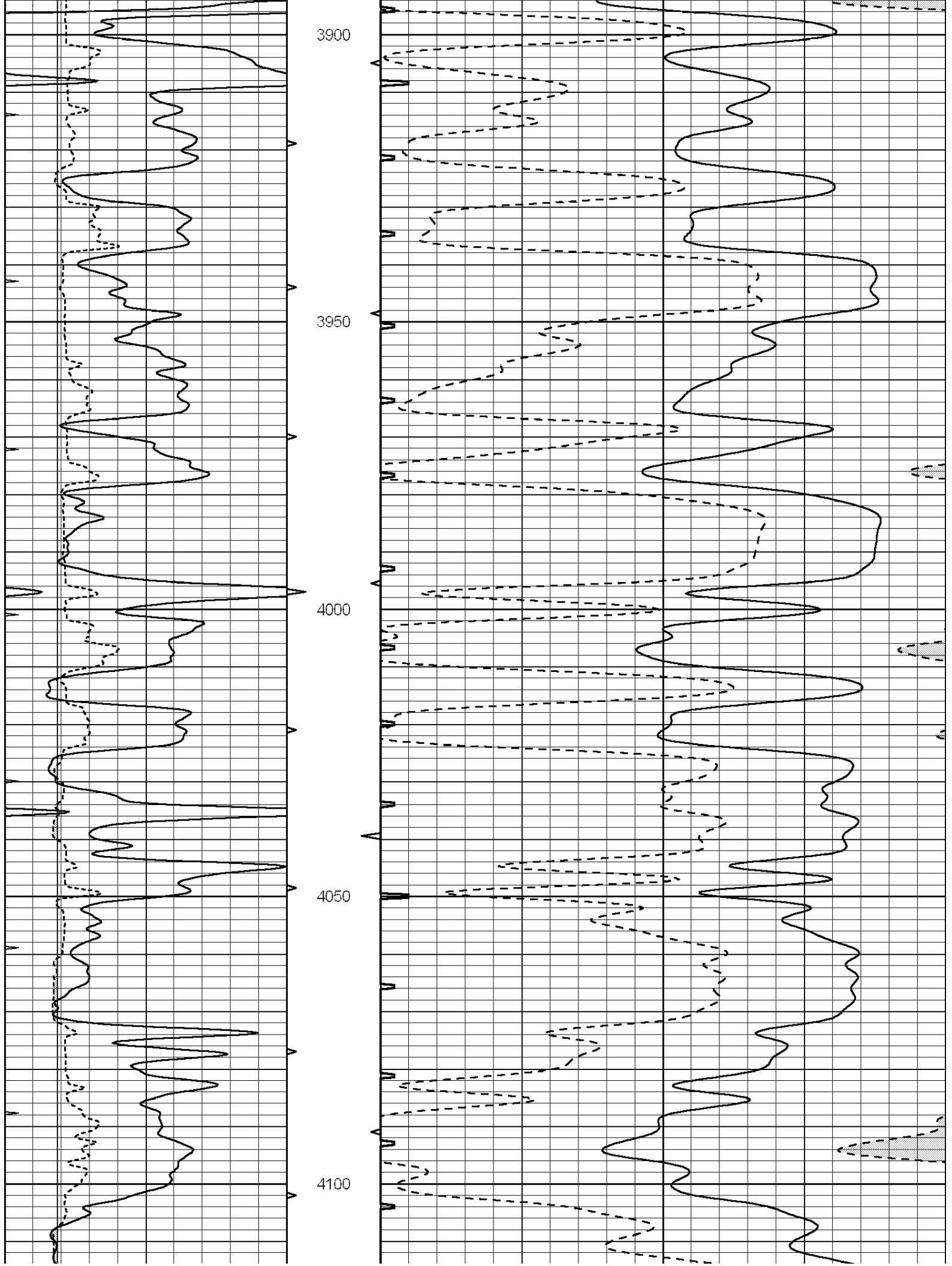
3700

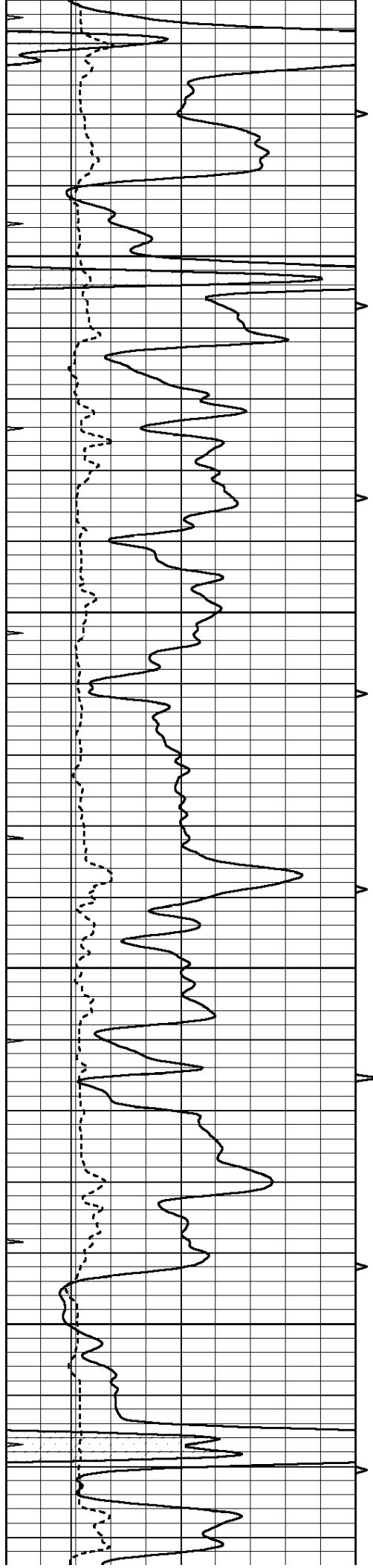
3750

3800

3850





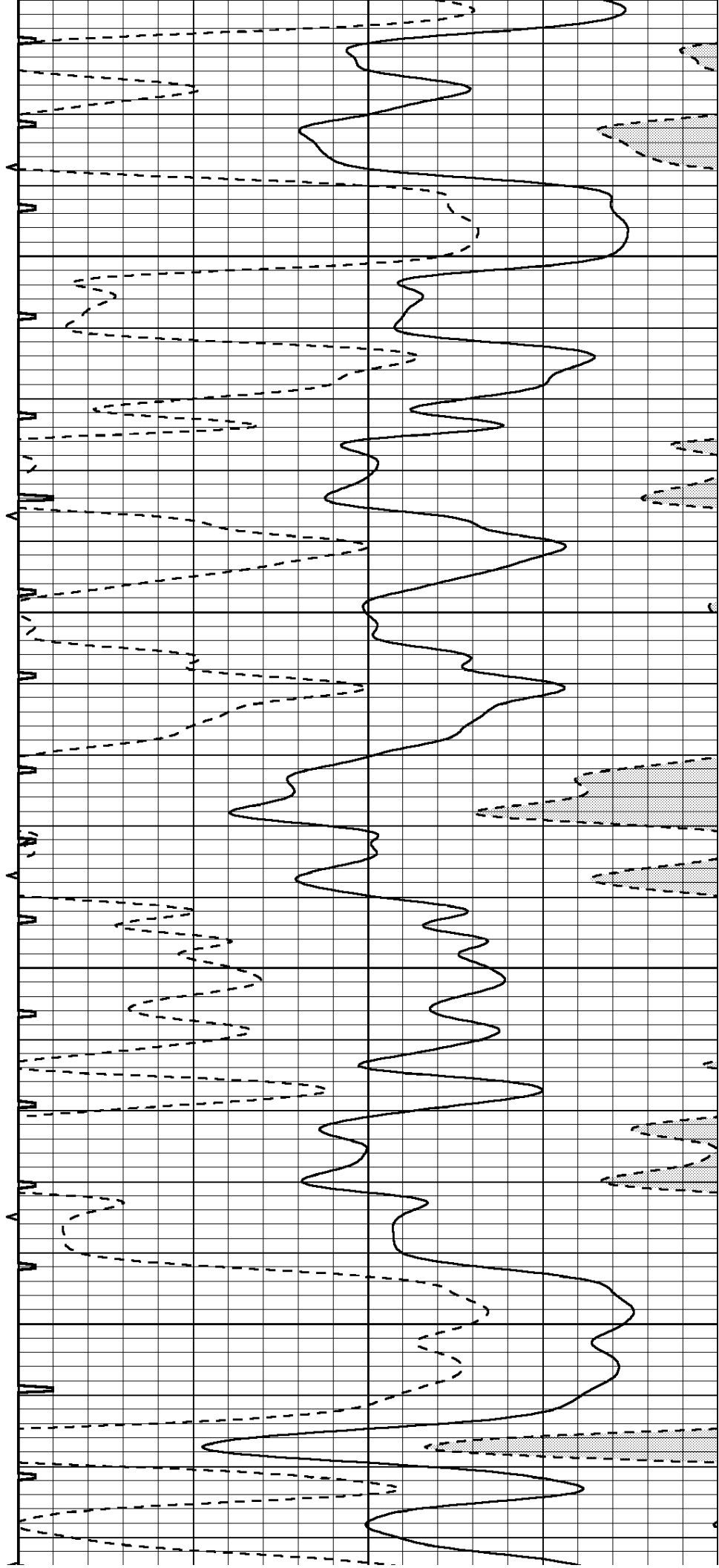


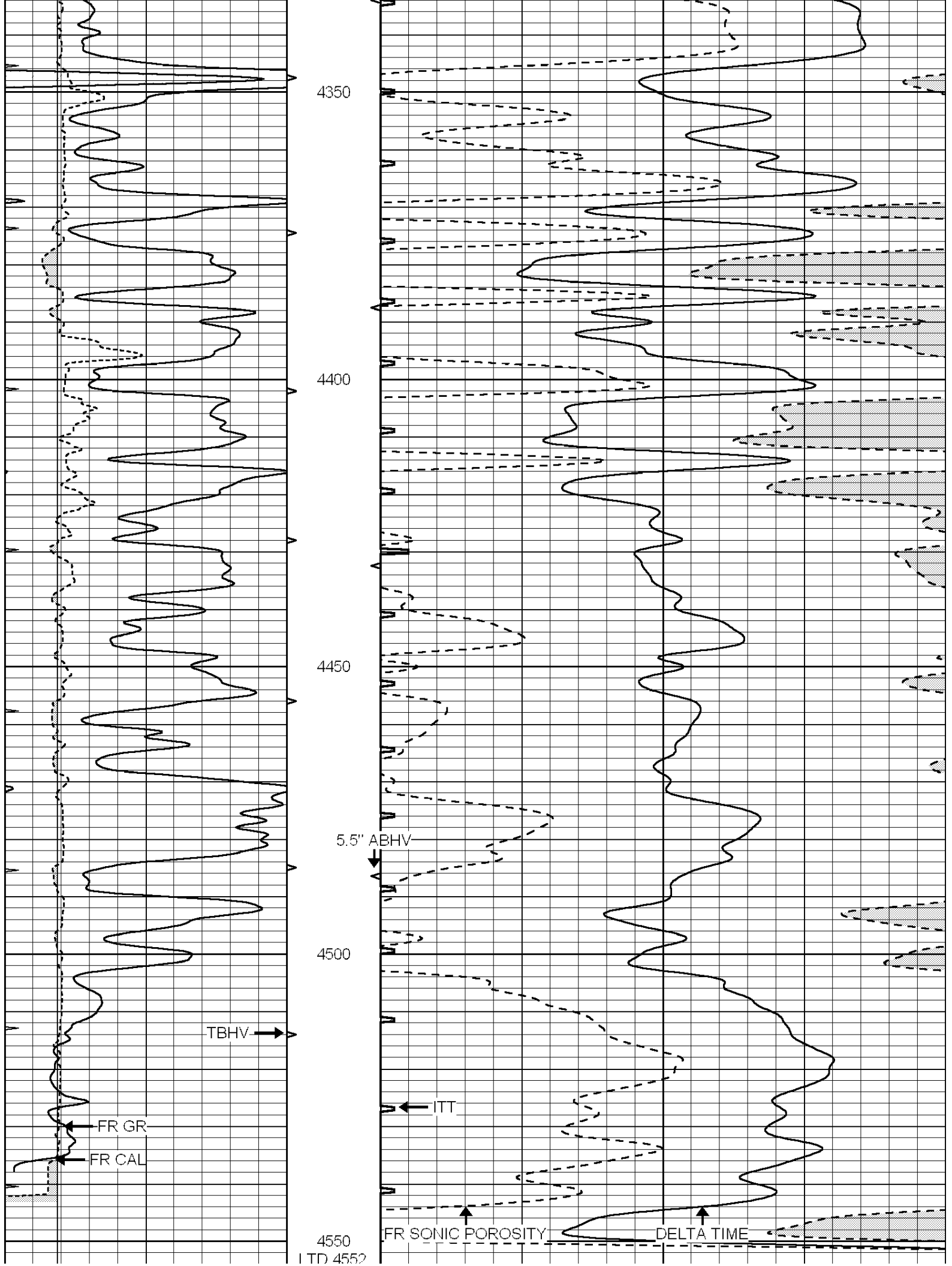
4150

4200

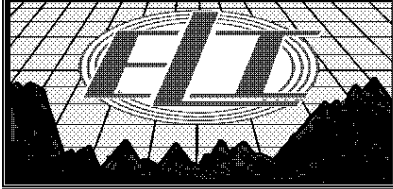
4250

4300





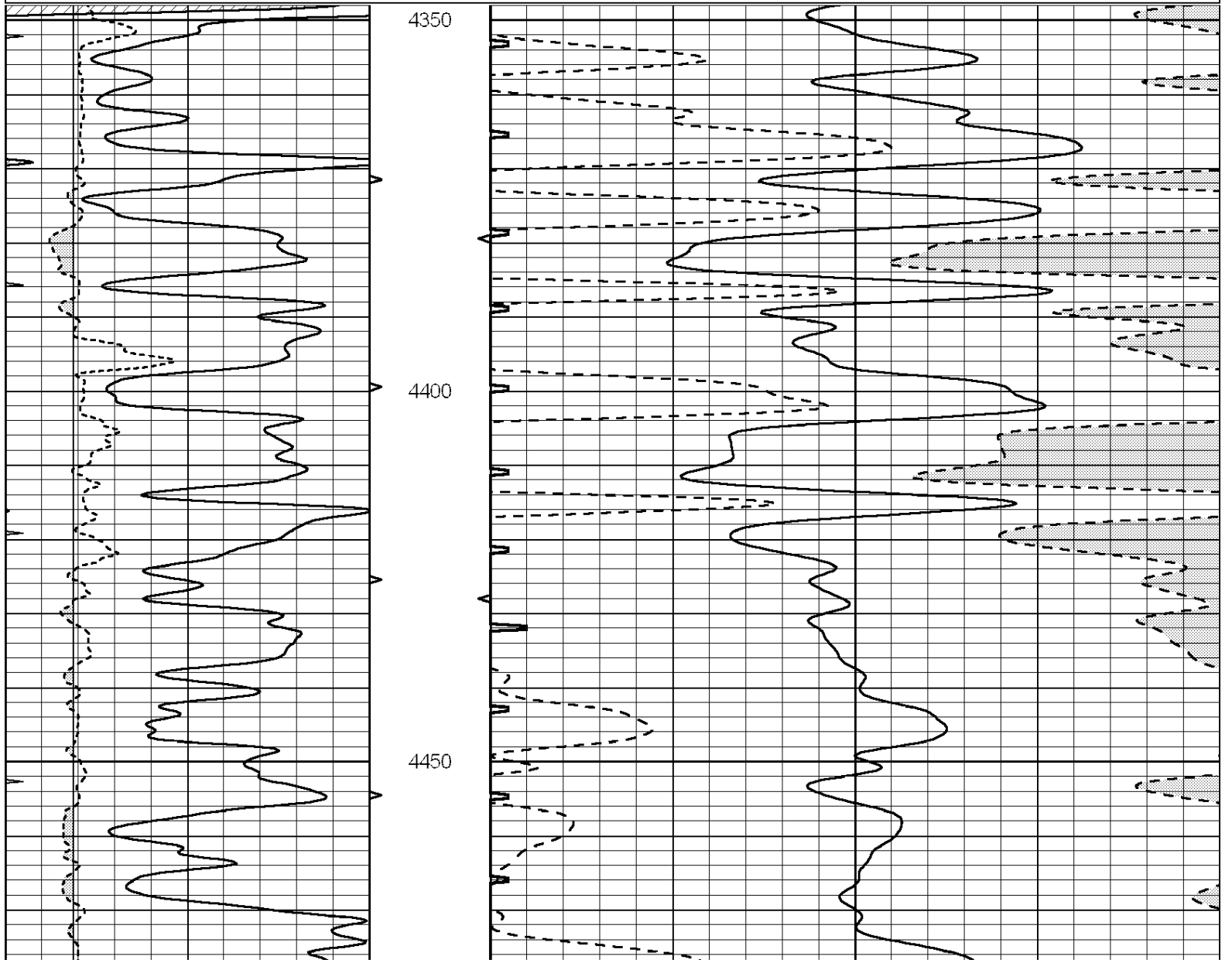
0	GAMMA RAY (GAPI)	150	ABHV	140	DELTA TIME (usec/ft)	40
6	CALIPER (in)	16	10 (ft3)	0 30	SONIC POROSITY (pu)	-10
0	MINMK	20	TBHV	0	ITT (msec)	20
			0 (ft3)	10		

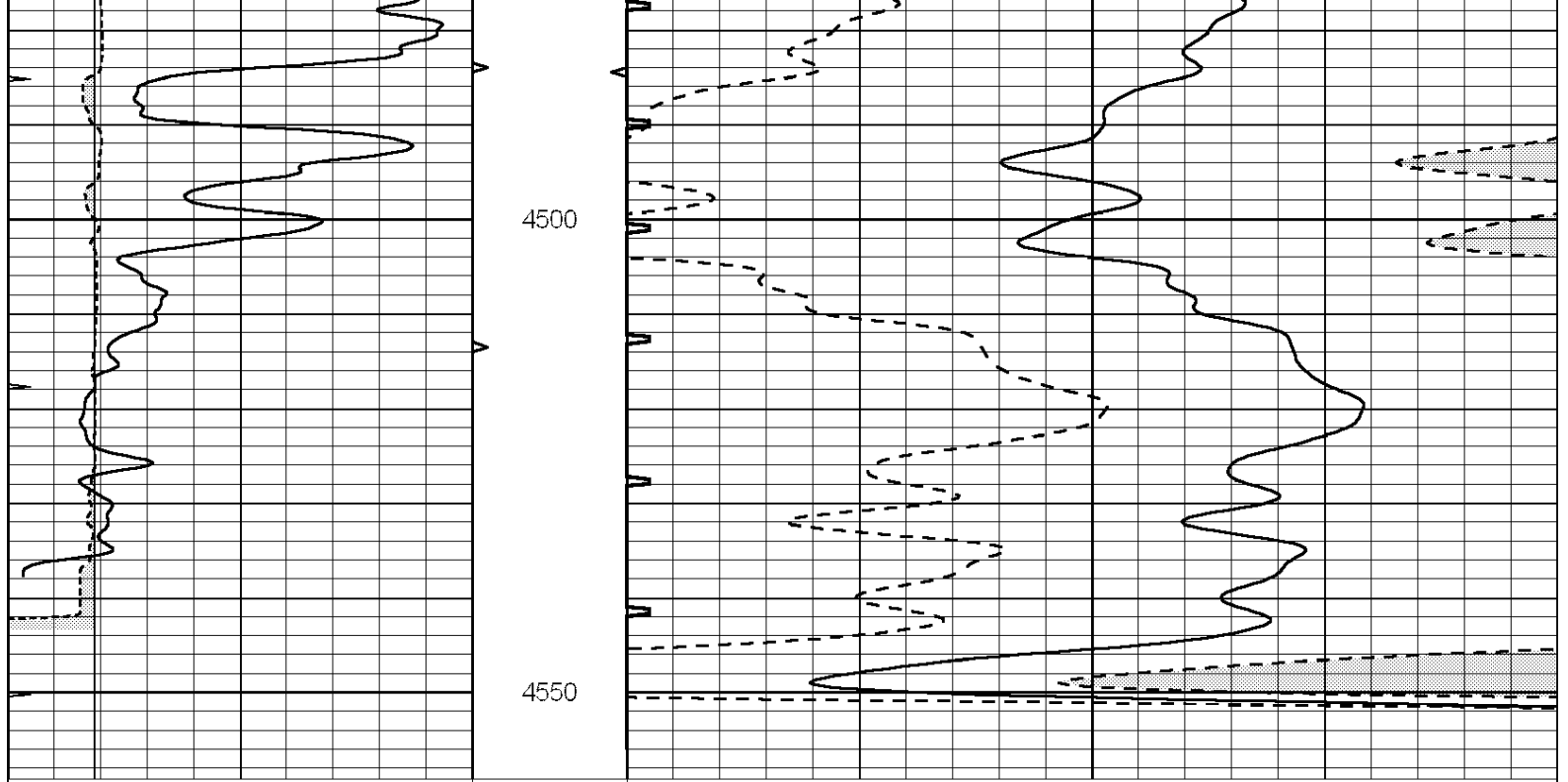


REPEAT SECTION

Database File: 3739pe.db
 Dataset Pathname: pass5.3
 Presentation Format: slt
 Dataset Creation: Fri Jul 05 05:42:40 2019 by Calc SOC 120430
 Charted by: Depth in Feet scaled 1:240

0	GAMMA RAY (GAPI)	150	ABHV	140	DELTA TIME (usec/ft)	40
6	CALIPER (in)	16	10 (ft3)	0 30	SONIC POROSITY (pu)	-10
0	MINMK	20	TBHV	0	ITT (msec)	20
			0 (ft3)	10		





0	GAMMA RAY (GAPI)	150	ABHV	140	DELTA TIME (usec/ft)	40	
6	CALIPER (in)	16	10 (ft3)	0	30	SONIC POROSITY (pu)	-10
0	MINMK	20	TBHV	0	ITT (msec)	20	
			0 (ft3)	10			