

**SONIC
LOG**

Company MULL DRILLING COMPANY, INC.
 Well #1-33 SCHIPPERS
 Field WILDCAT
 County THOMAS
 State KANSAS

Company MULL DRILLING COMPANY, INC.
 Well #1-33 SCHIPPERS
 Field WILDCAT
 County THOMAS State KANSAS

Location: API # : 15-193-21044-0000
 1243' FSL & 1732' FVL
 NE - NW - SE - SW

Permanent Datum GROUND LEVEL Elevation 3005
 Log Measured From KELLY BUSHING 5' A.G.L.
 Drilling Measured From KELLY BUSHING

SEC 33 TWP 10S RGE 31W

Other Services
 CDL/CNL/PE
 DIL/MEL

Elevation
 K.B. 3010
 D.F. 3008
 G.L. 3005

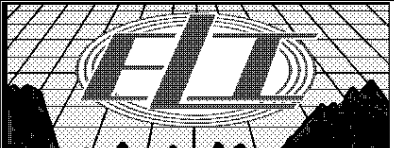
Date	6/21/19		
Run Number	TWO		
Depth Driller	4680		
Depth Logger	4681		
Bottom Logged Interval	4673		
Top Log Interval	200		
Casing Driller	8 5/8"@287'		
Casing Logger	287		
Bit Size	7 7/8"		
Type Fluid in Hole	CHEMICAL MUD	CHLORIDES 3,400 PPM	
Density / Viscosity	9.4/64		
pH / Fluid Loss	10.5/8.8		
Source of Sample	FLOWLINE		
Rim @ Meas. Temp	1.00@90F		
Rmf @ Meas. Temp	.750@90F		
Rmc @ Meas. Temp	1.20@90F		
Source of Rmf / Rmc	MEASUREMENT		
Rim @ BHT	738@122F		
Time Circulation Stopped	3.5 HOURS		
Time Logger on Bottom	9:30 A.M.		
Maximum Recorded Temperature	122F		
Equipment Number	922339		
Location	HAYS, KANSAS		
Recorded By	JEFF LUEBBERS		
Witnessed By	KEVIN KESSLER		

<<< Fold Here >>>

All interpretations are opinions based on inferences from electrical or other measurements and we cannot and do not guarantee the accuracy or correctness of any interpretation, and we shall not, except in the case of gross or willful negligence on our part, be liable or responsible for any loss, costs, damages, or expenses incurred or sustained by anyone resulting from any interpretation made by any of our officers, agents or employees. These interpretations are also subject to our general terms and conditions set out in our current Price Schedule.

Comments

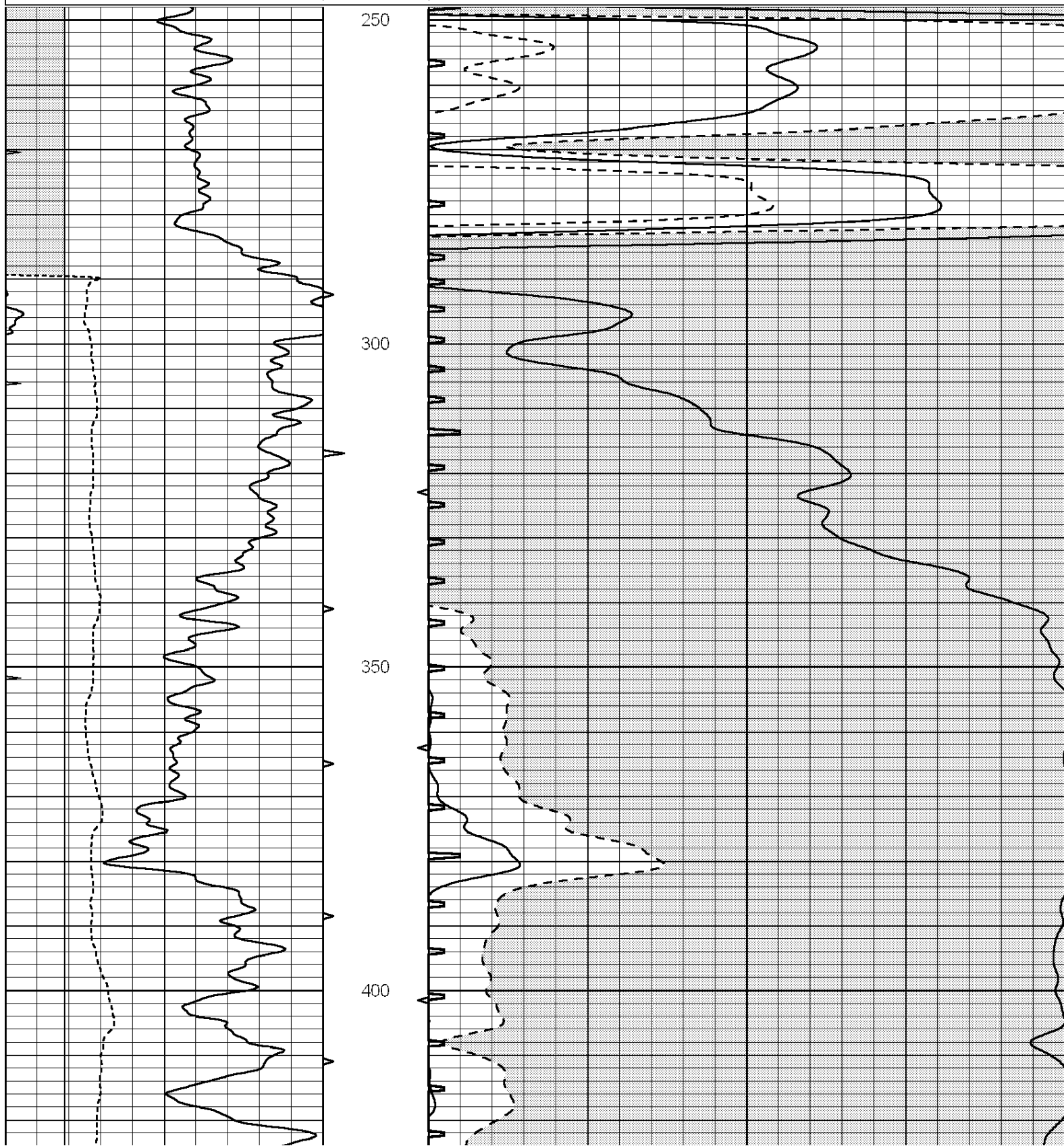
THANK YOU FOR USING ELI WIRELINE HAYS, KANSAS (785) 628-6395
 DIRECTIONS
 CAMPUS & I-70, 3N. TO "THOMAS CR B", 2 3/4W., 3/4S. INTO

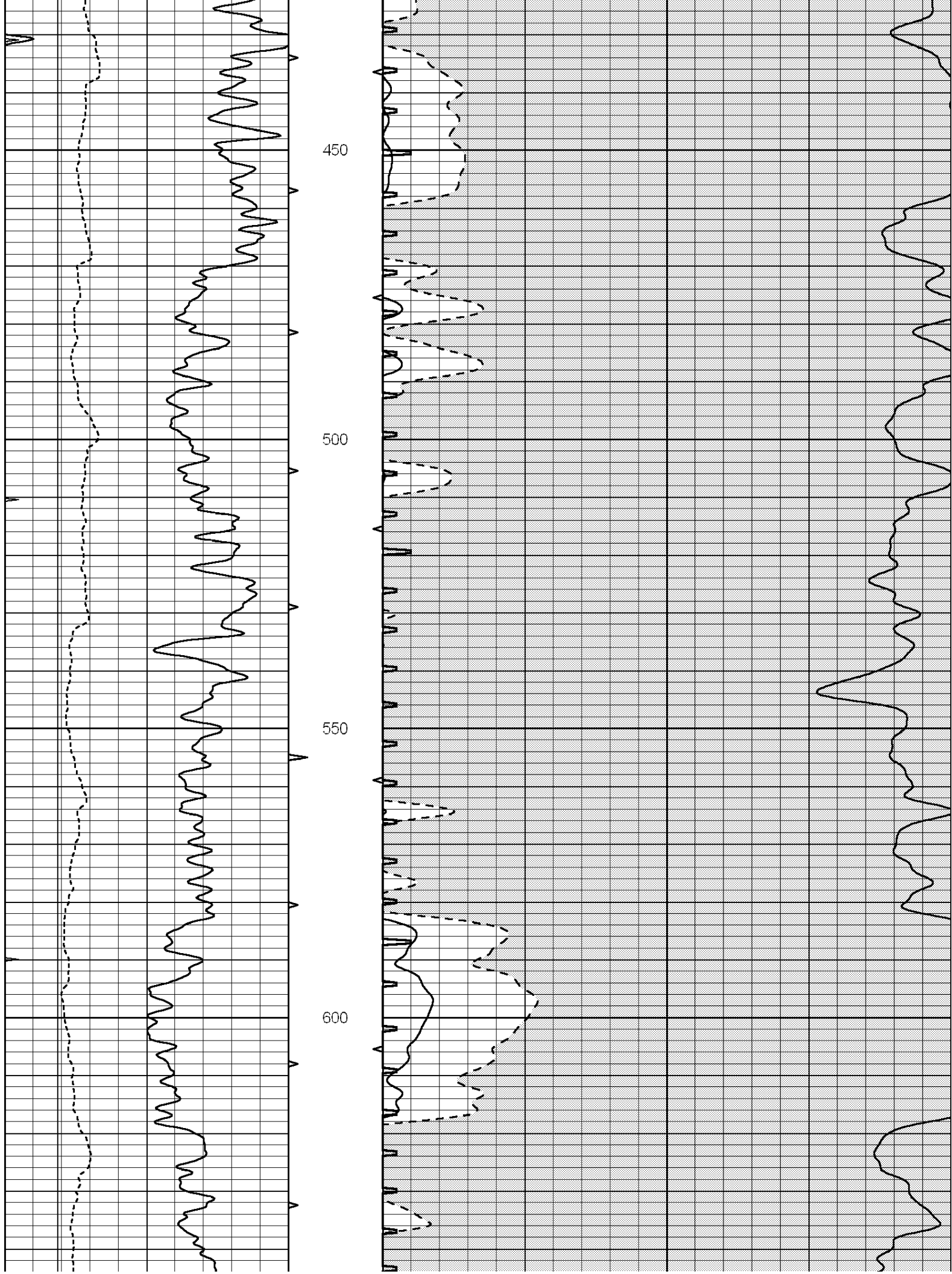


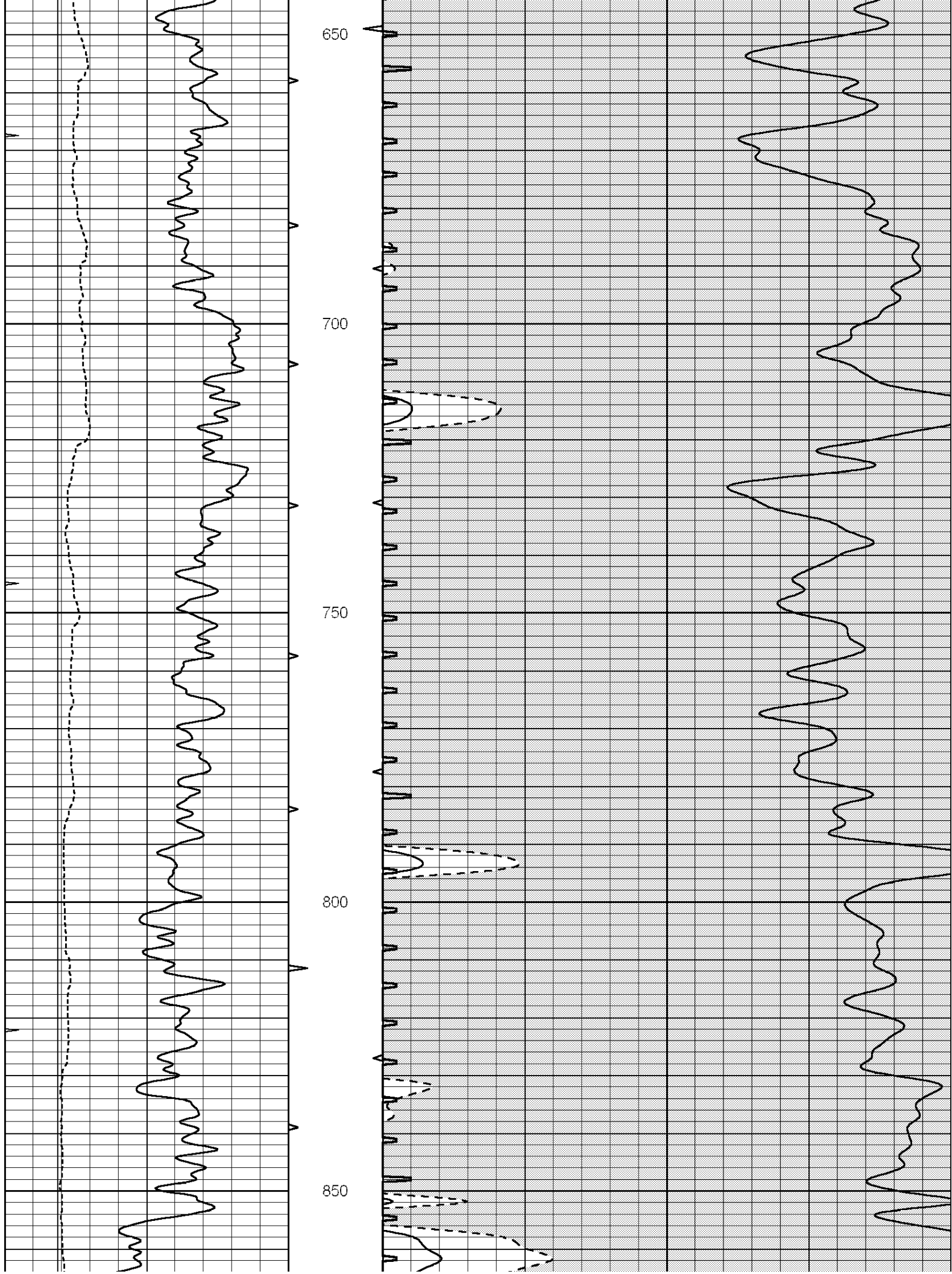
MAIN SECTION

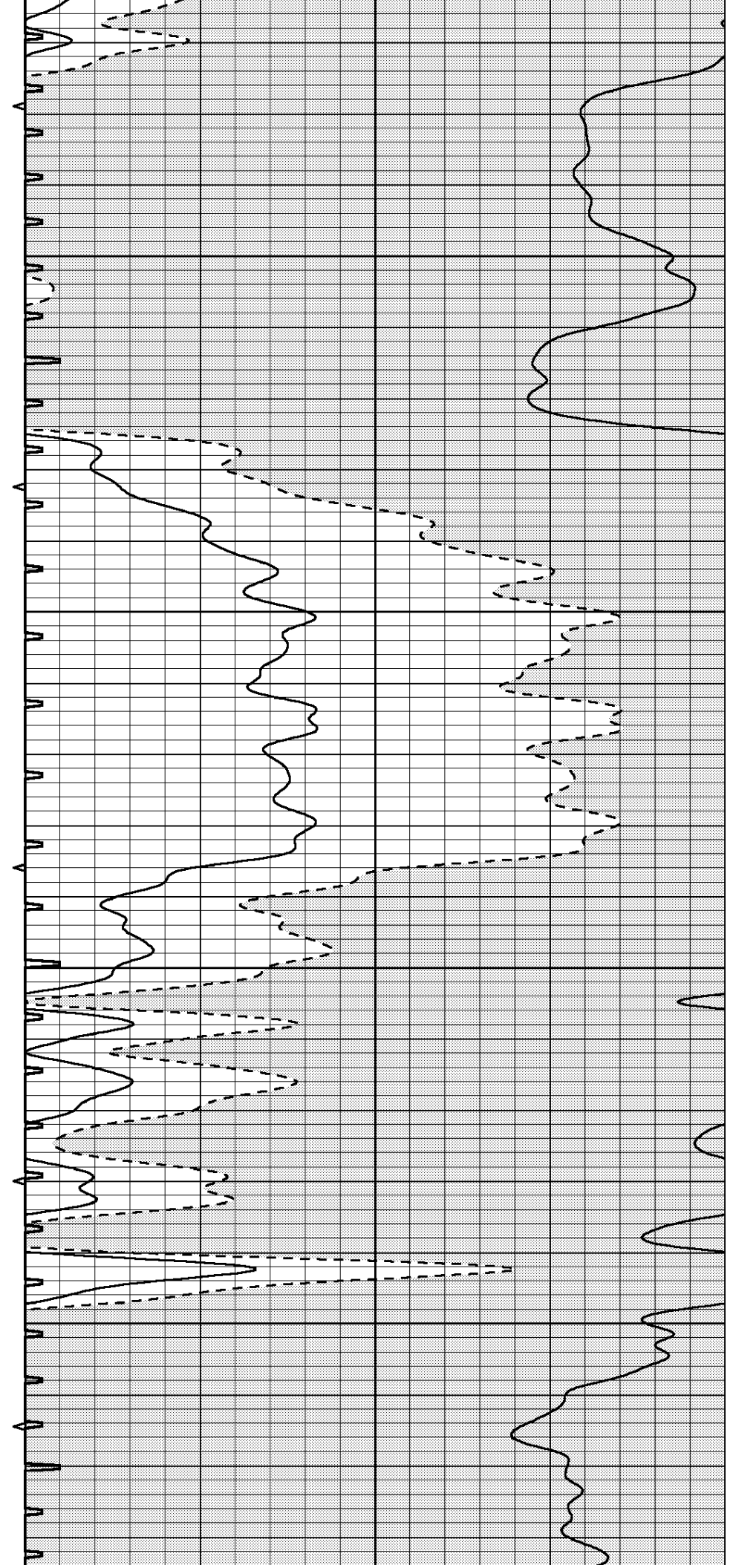
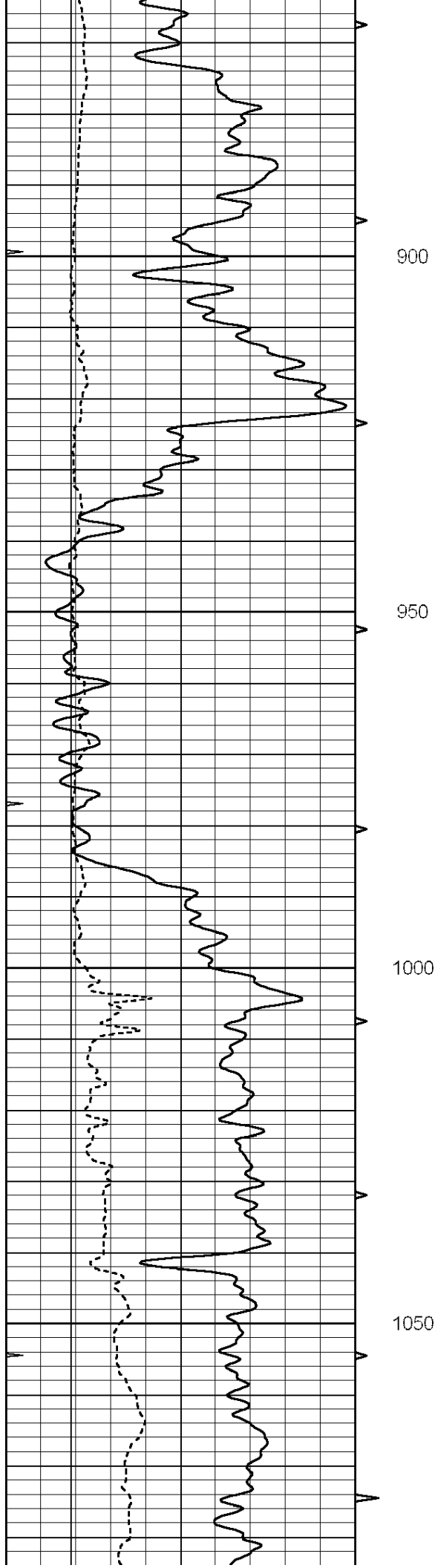
Database File: 3733pe.db
 Dataset Pathname: pass6.6
 Presentation Format: slt
 Dataset Creation: Sat Jun 22 11:04:20 2019
 Charted by: Depth in Feet scaled 1:240

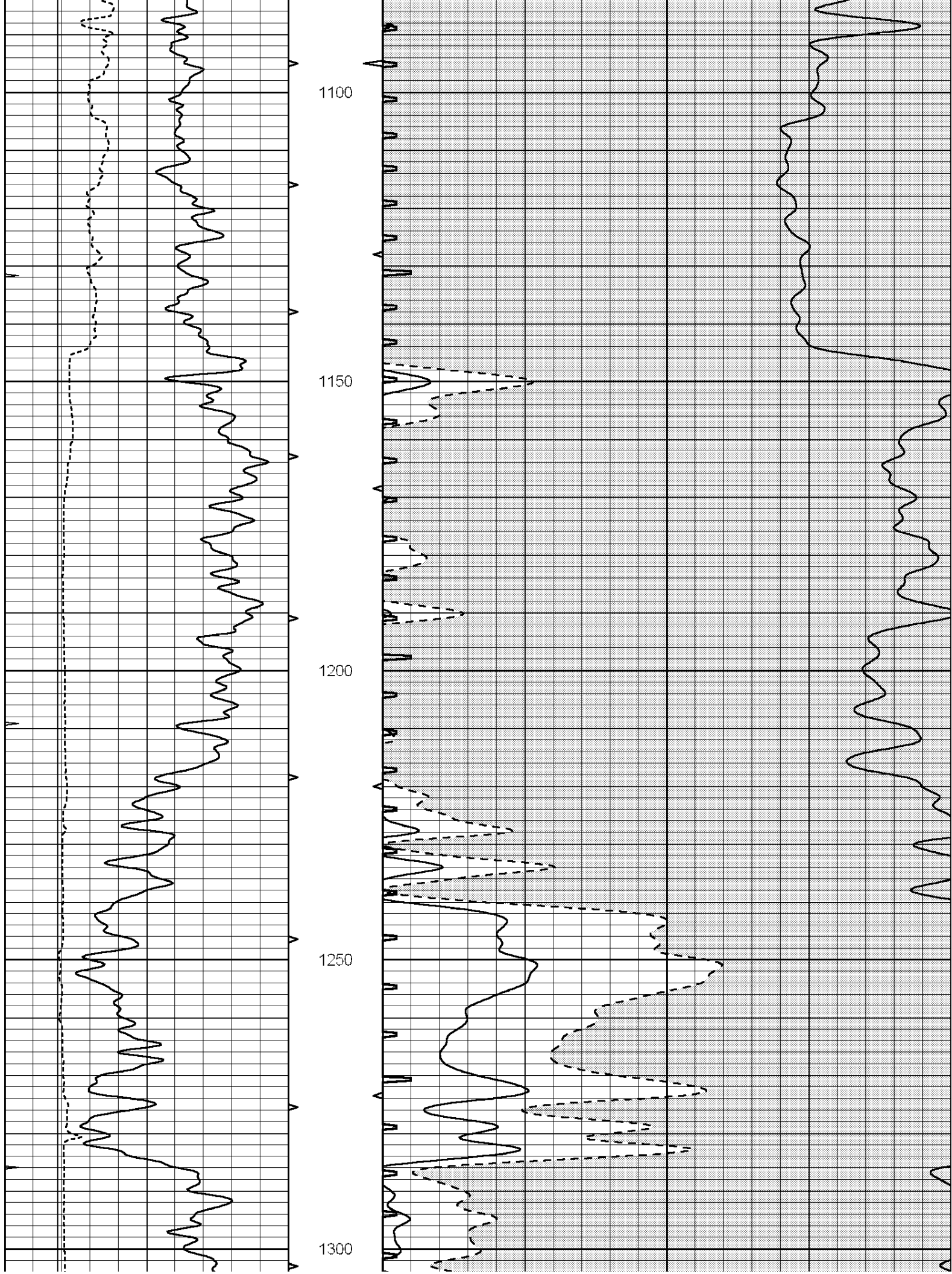
0	GAMMA RAY (GAPI)	150	ABHV	140	DELTA TIME (usec/ft)	40
6	CALIPER (in)	16	10 (ft3)	0	30	SONIC POROSITY (pu)
0	MINMK	20	TBHV	0	ITT (msec)	20
			0 (ft3)	10		

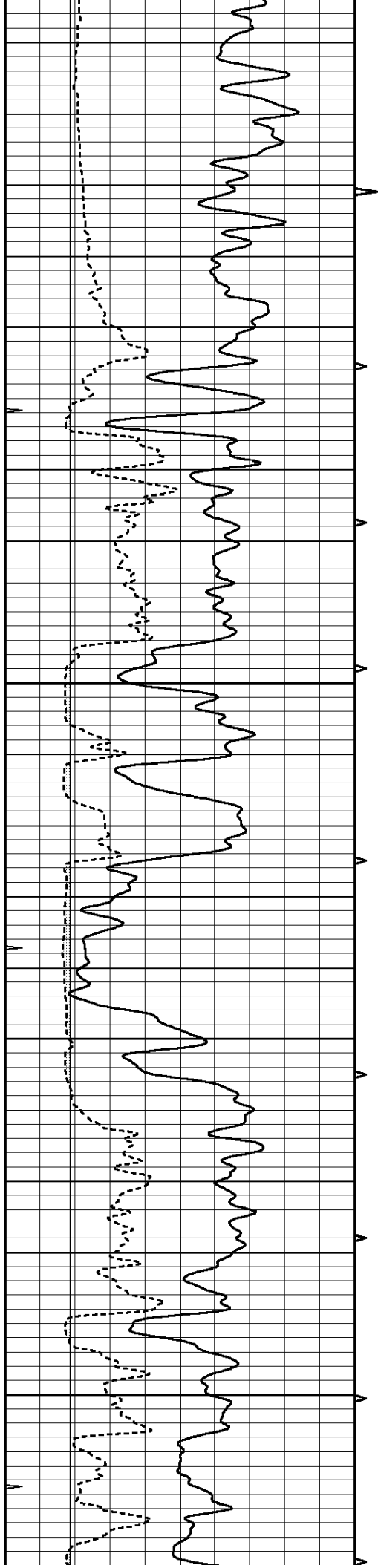










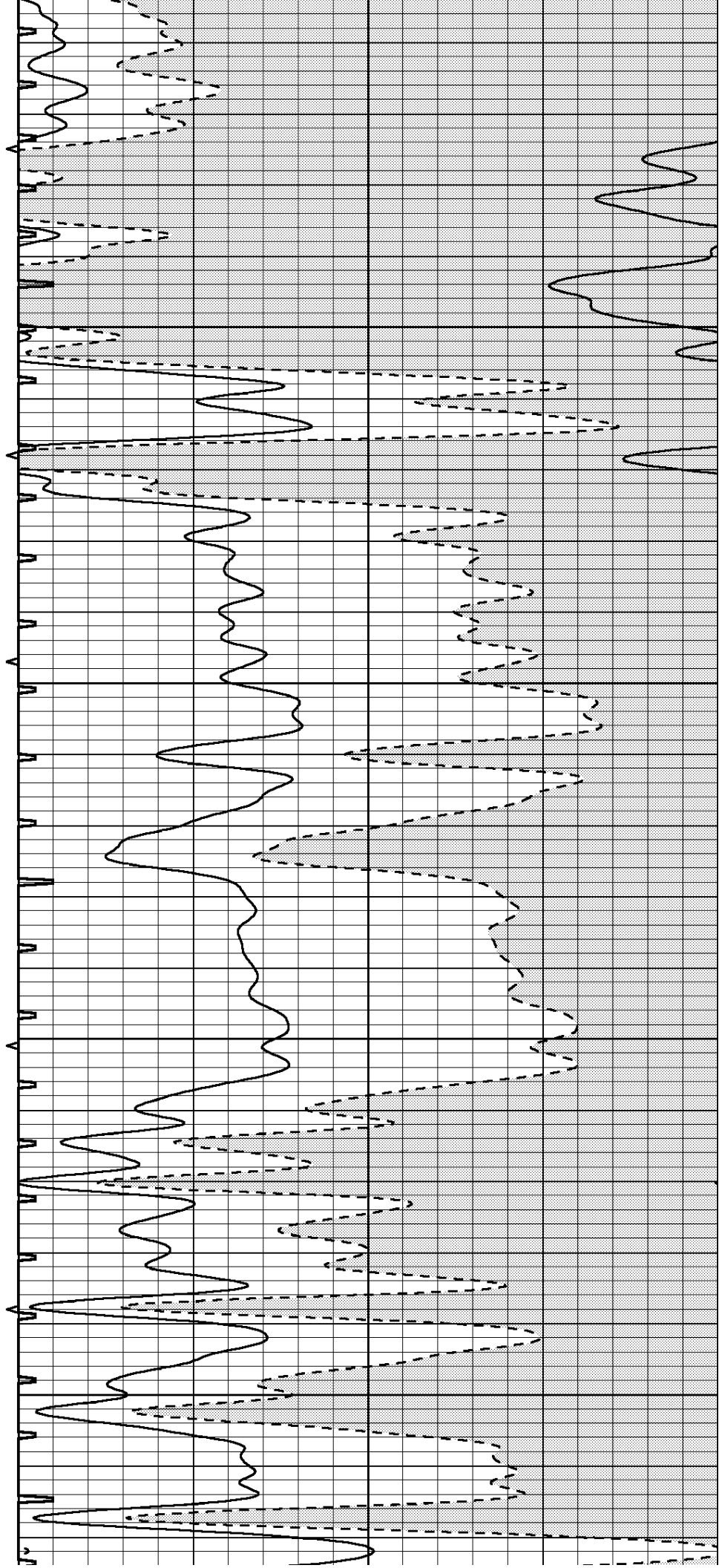


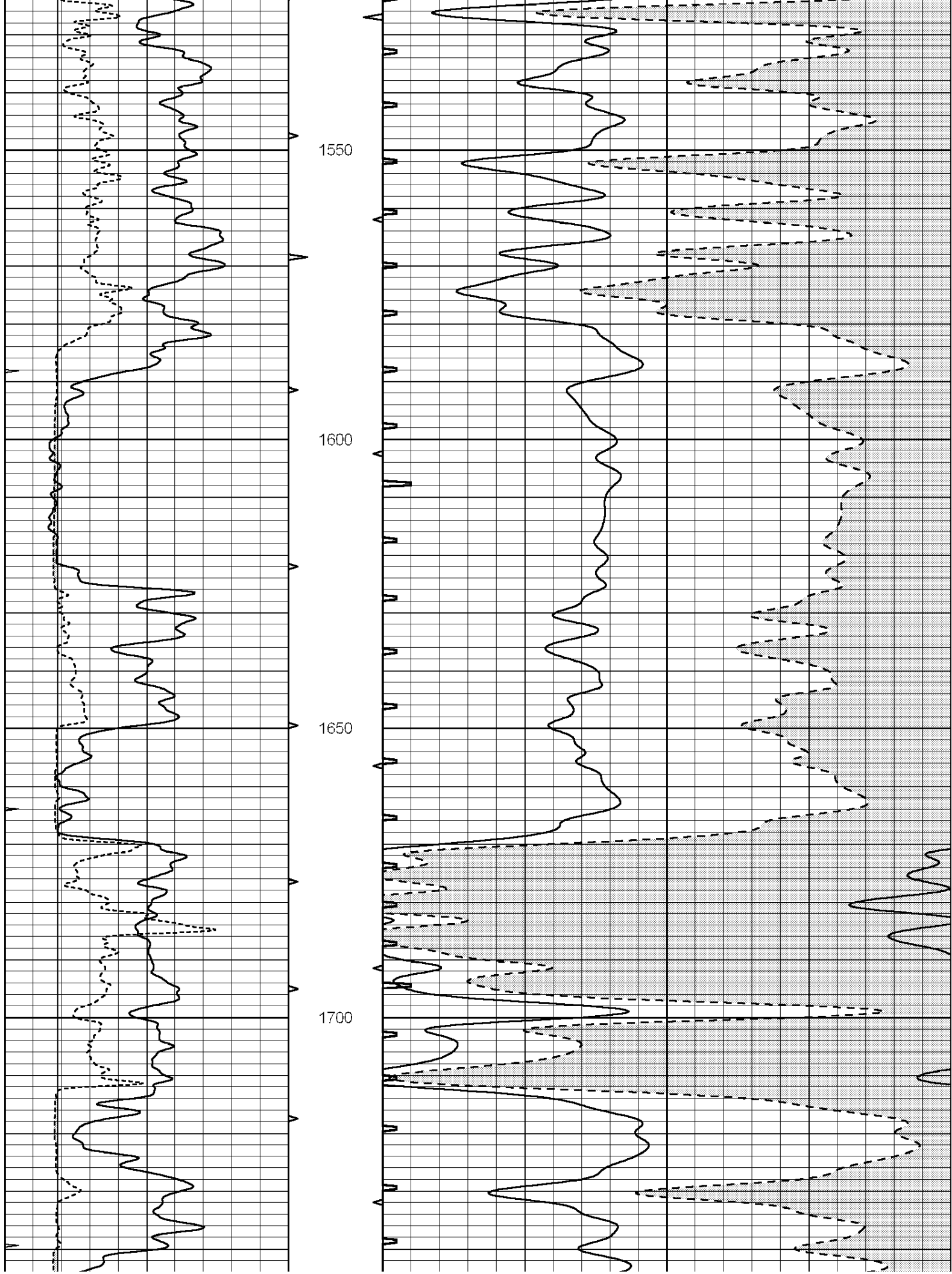
1350

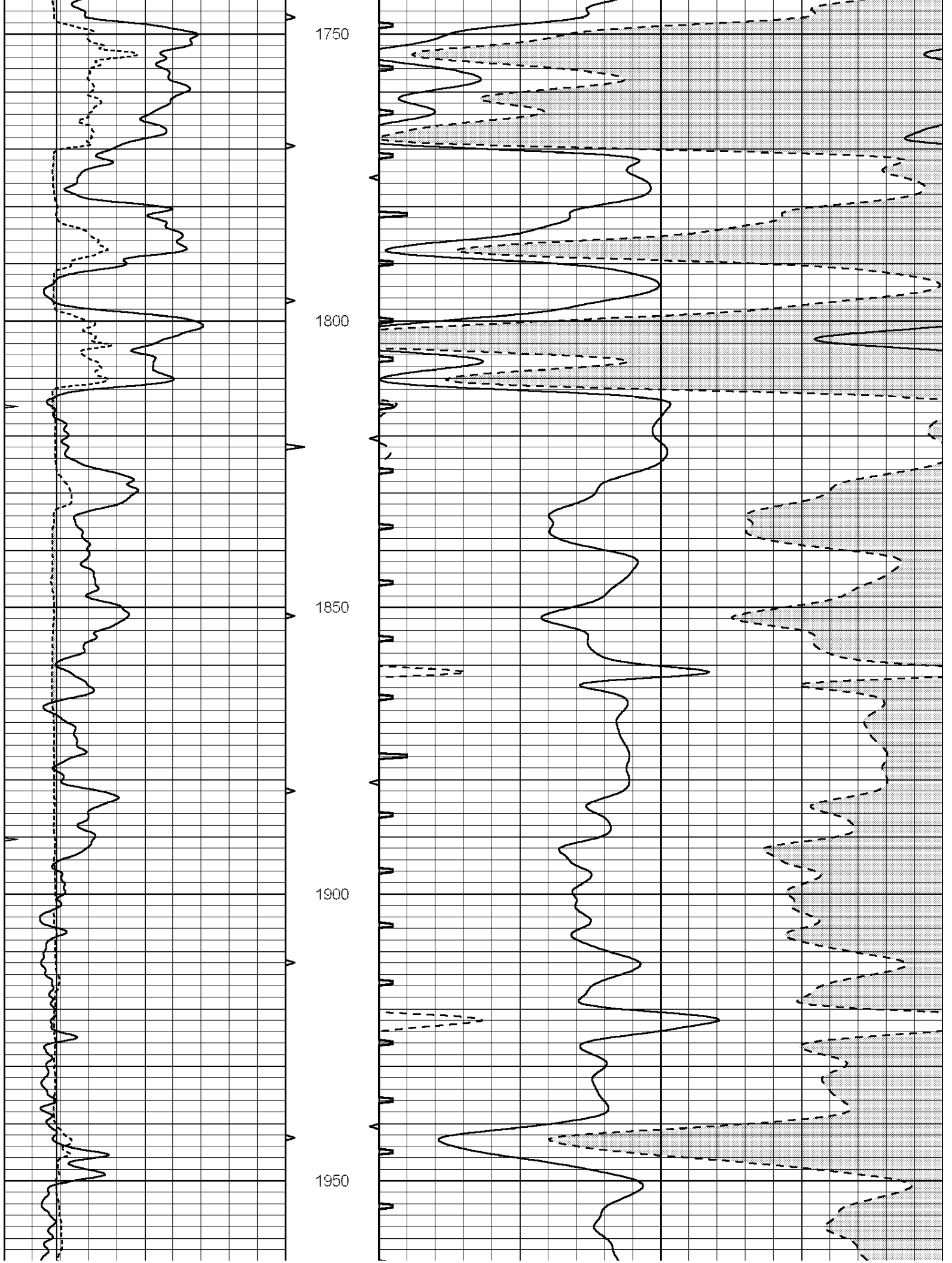
1400

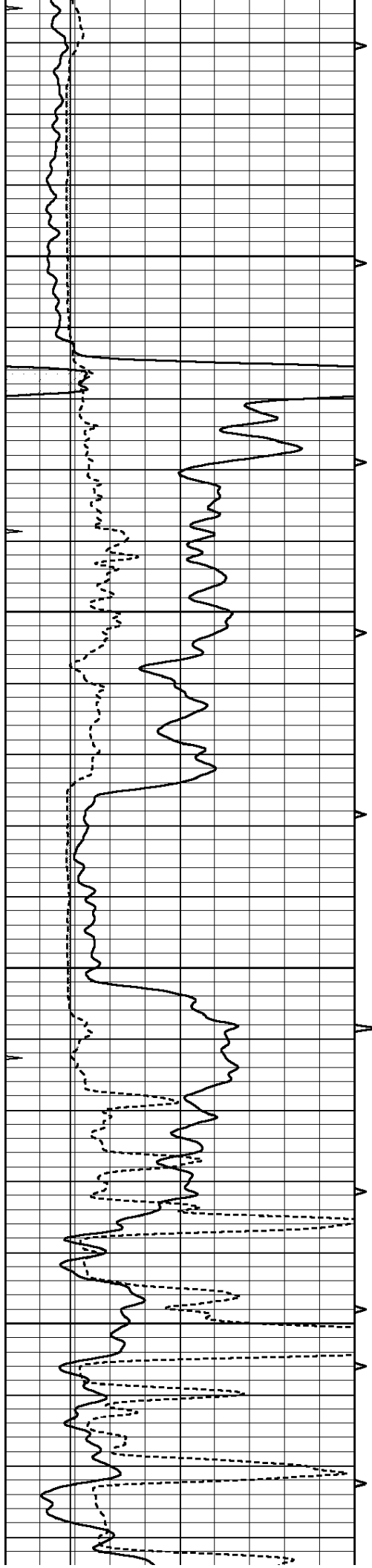
1450

1500







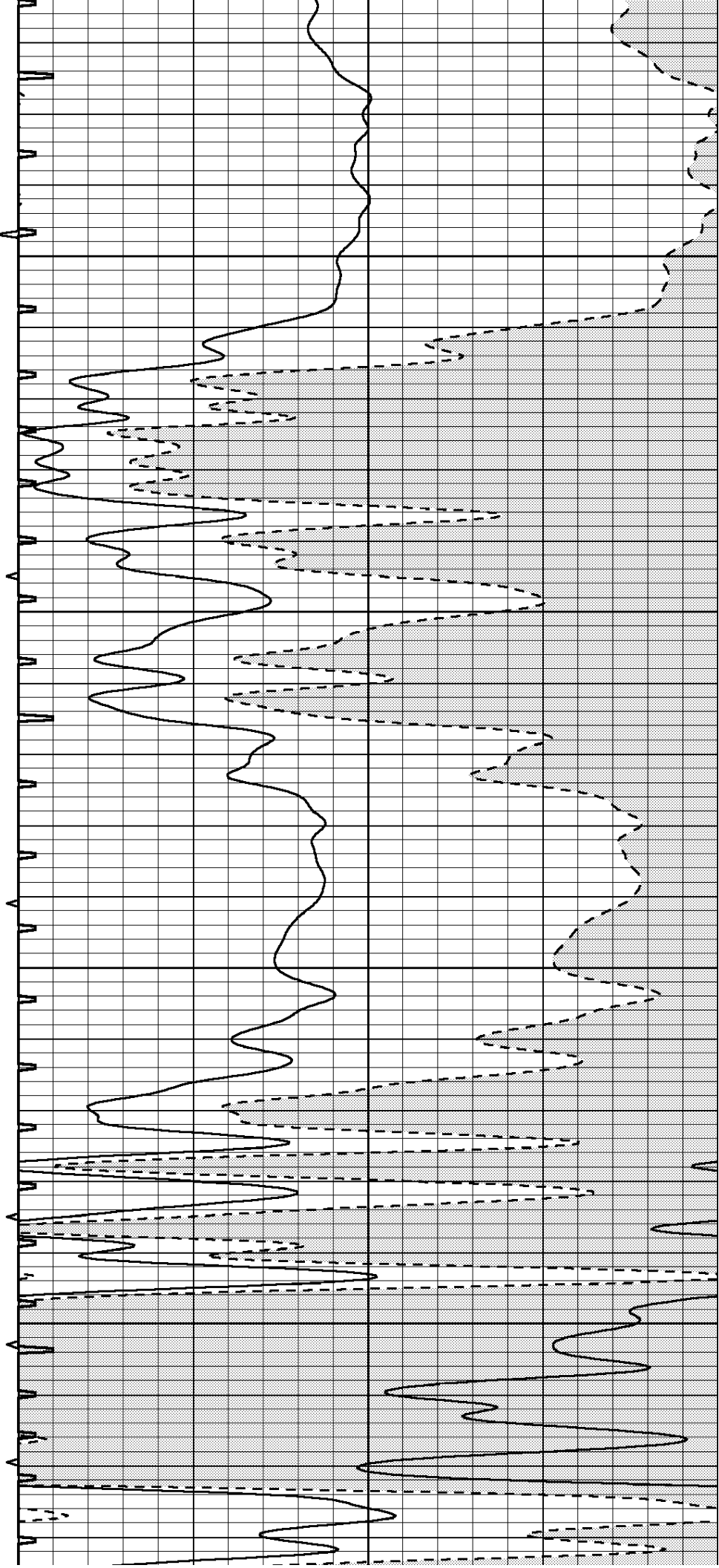


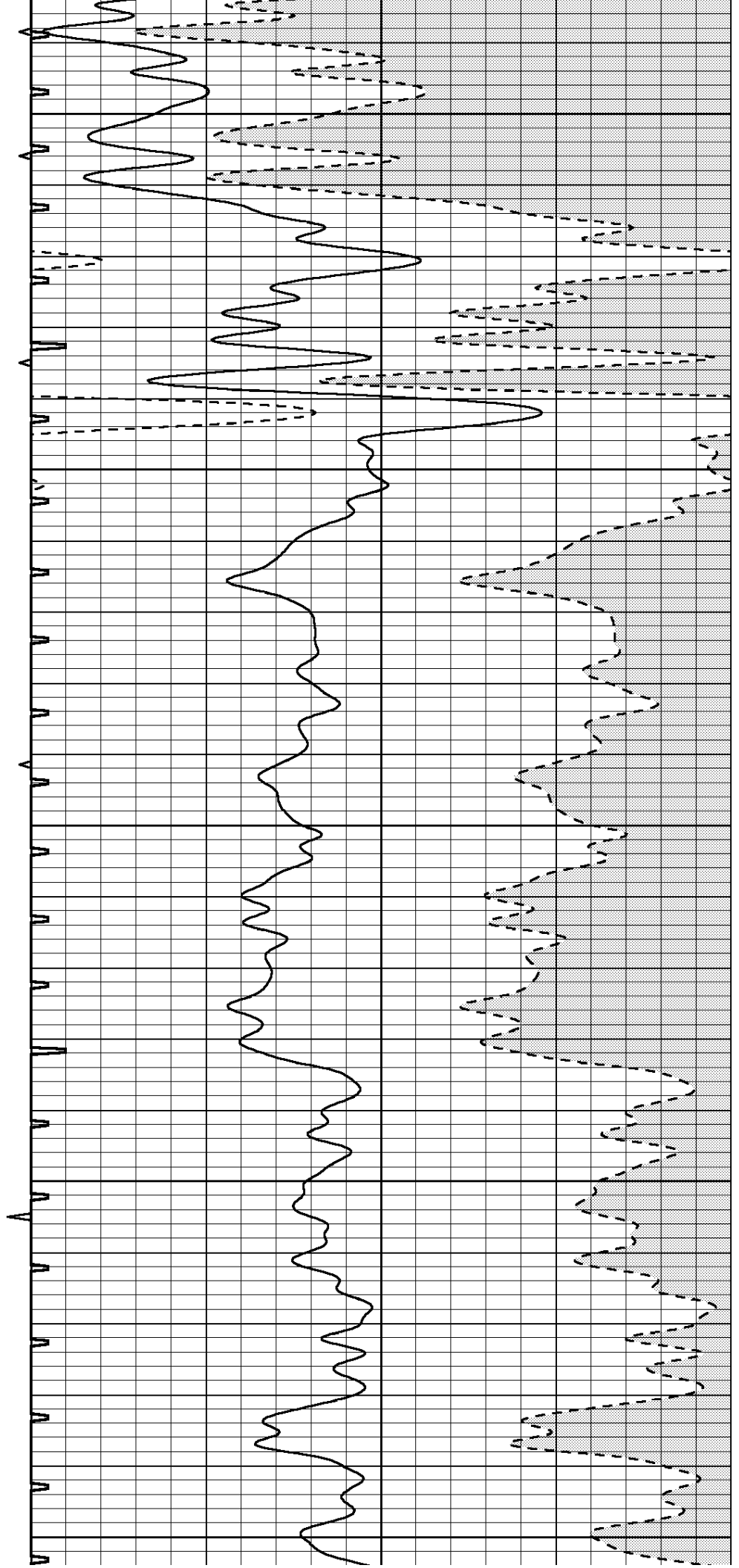
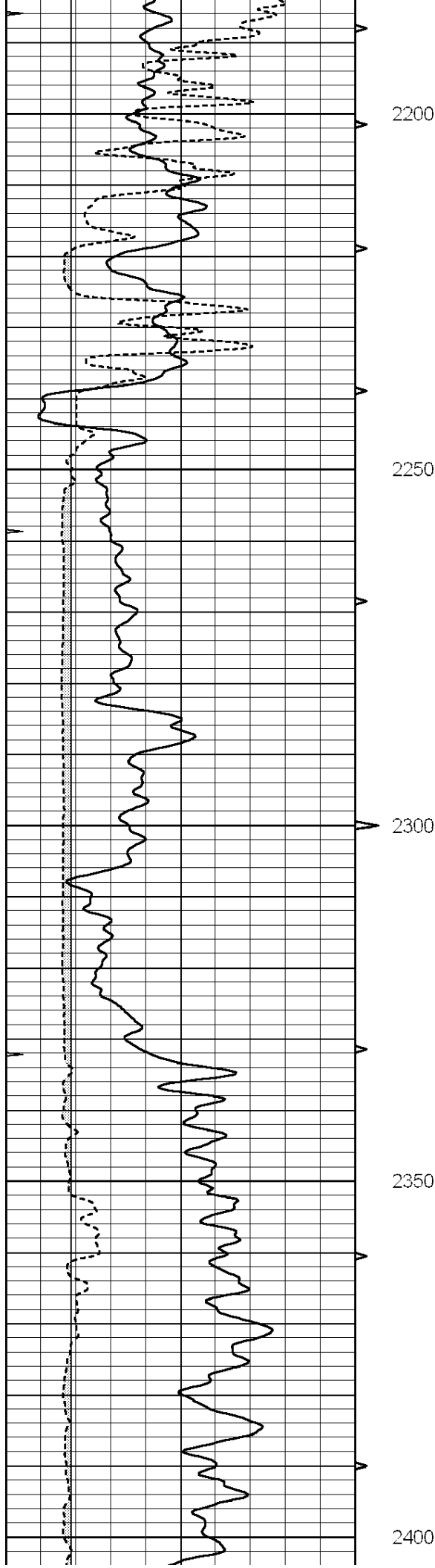
2000

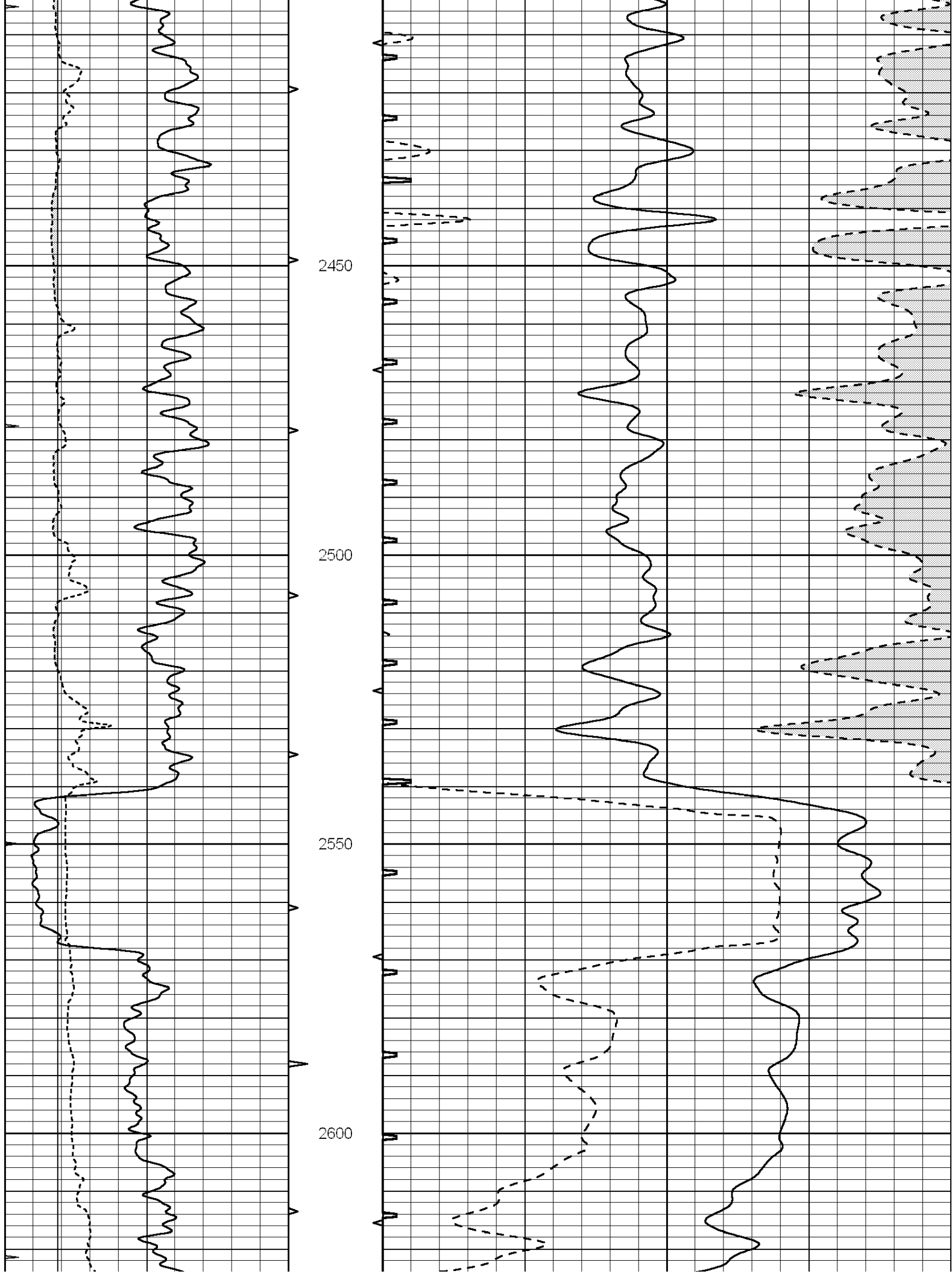
2050

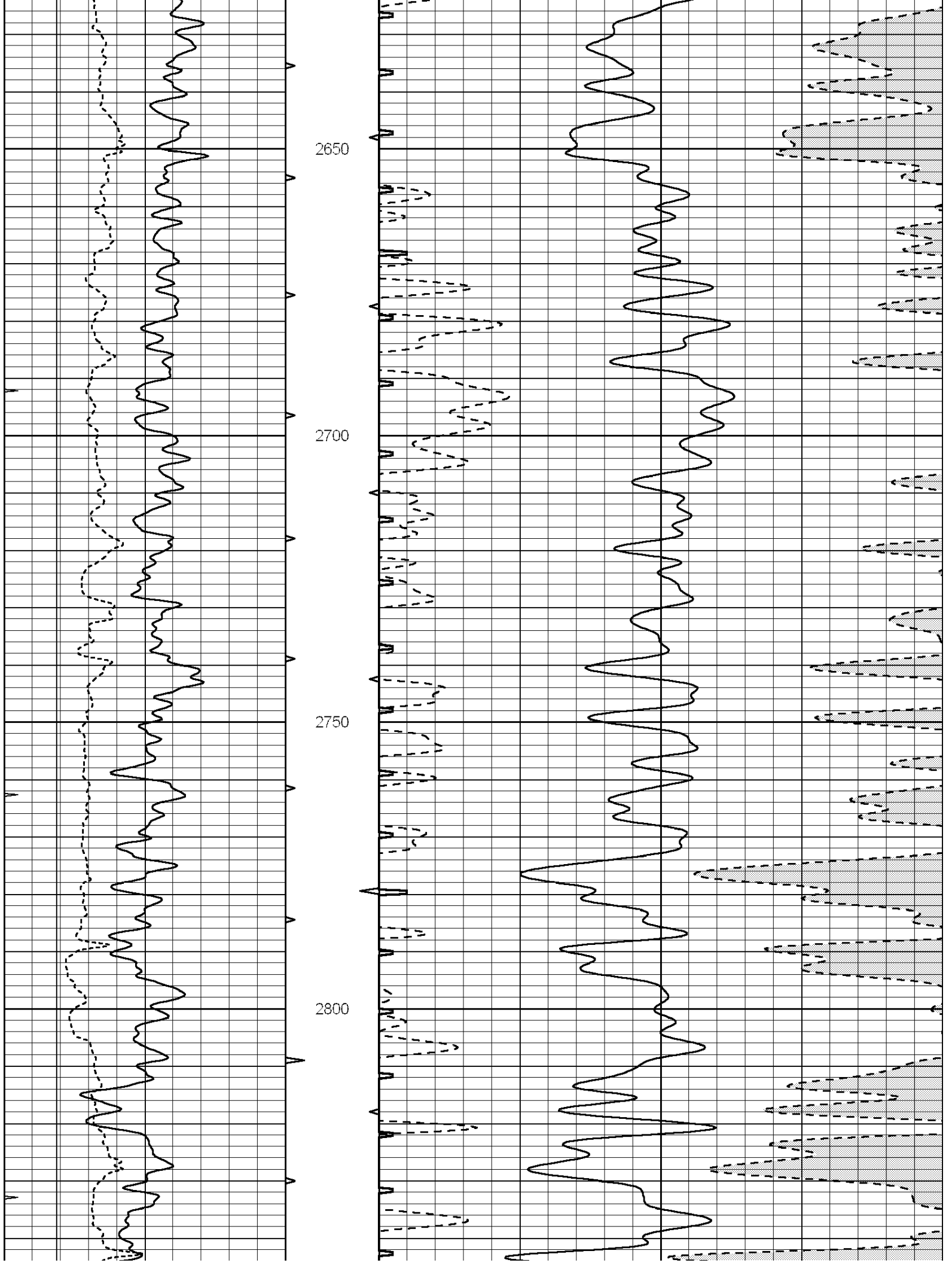
2100

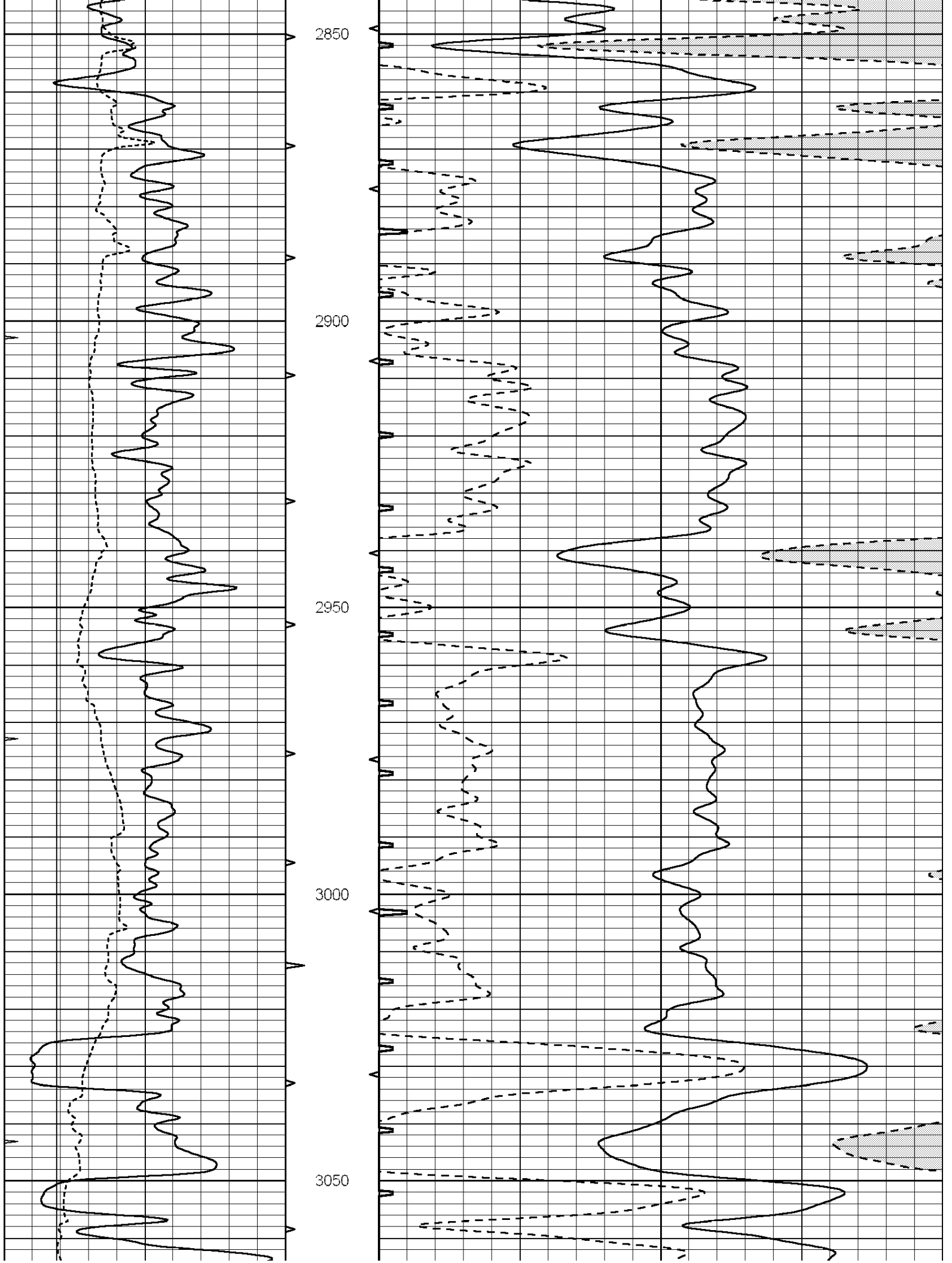
2150

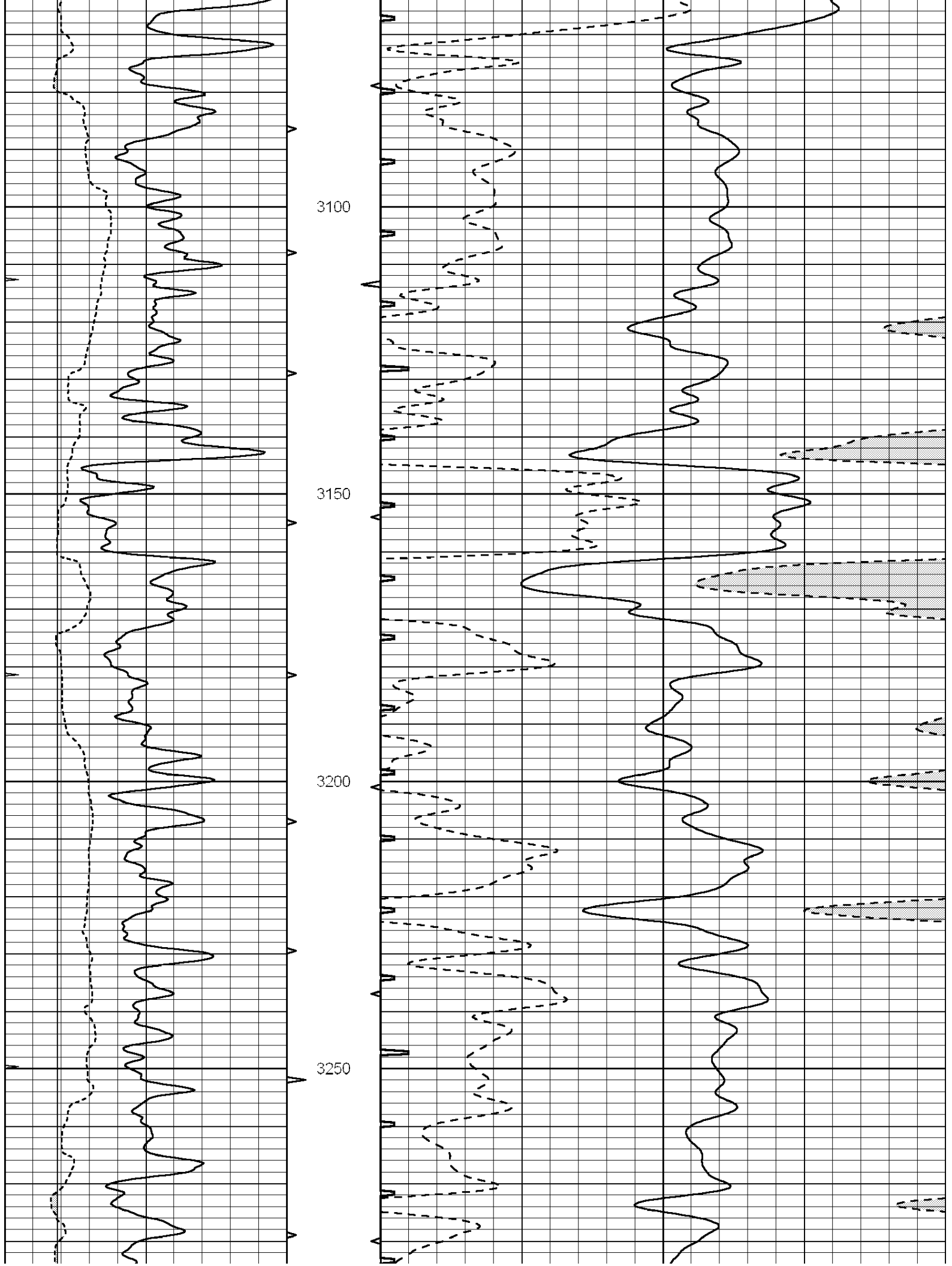


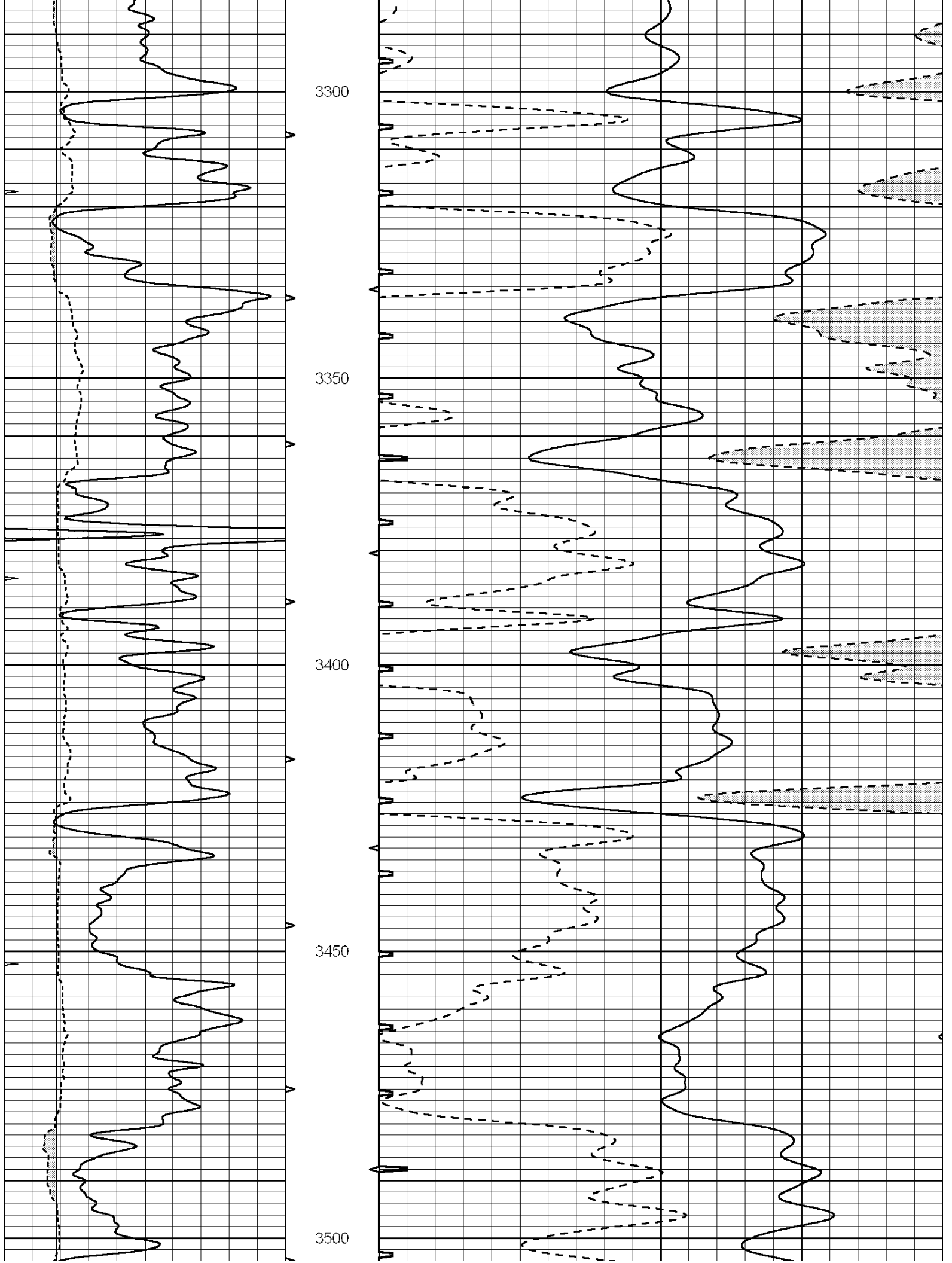


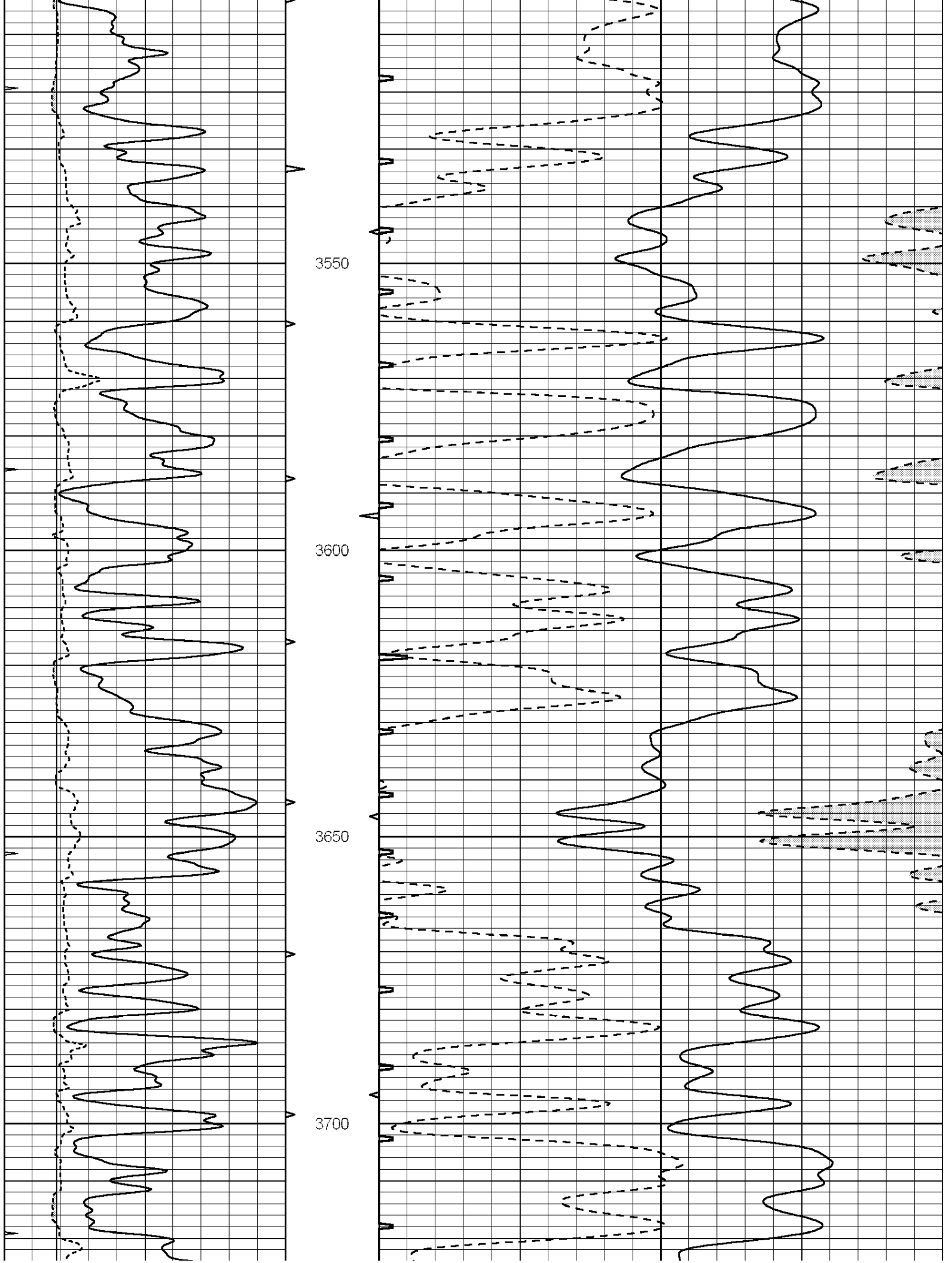


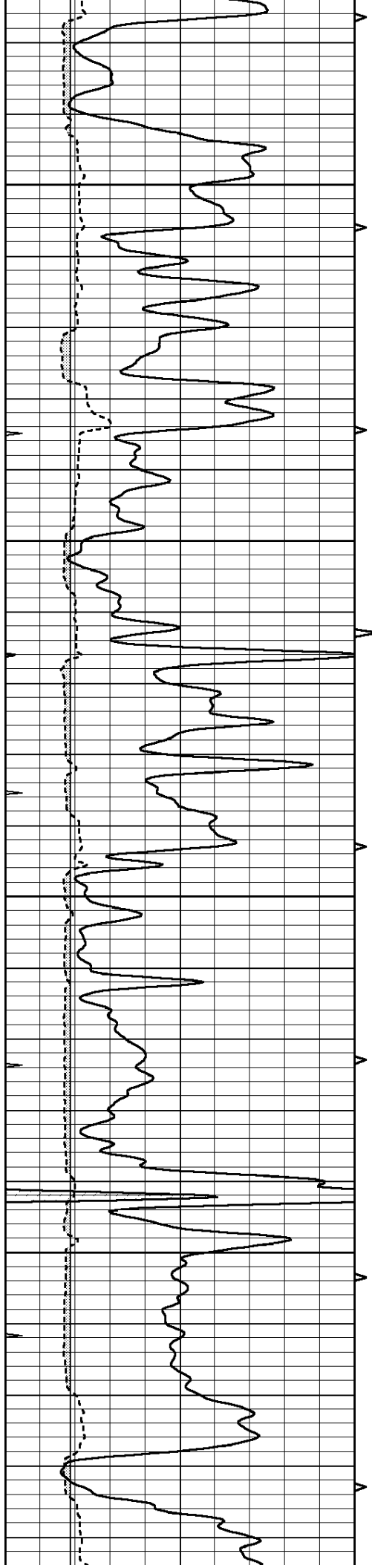










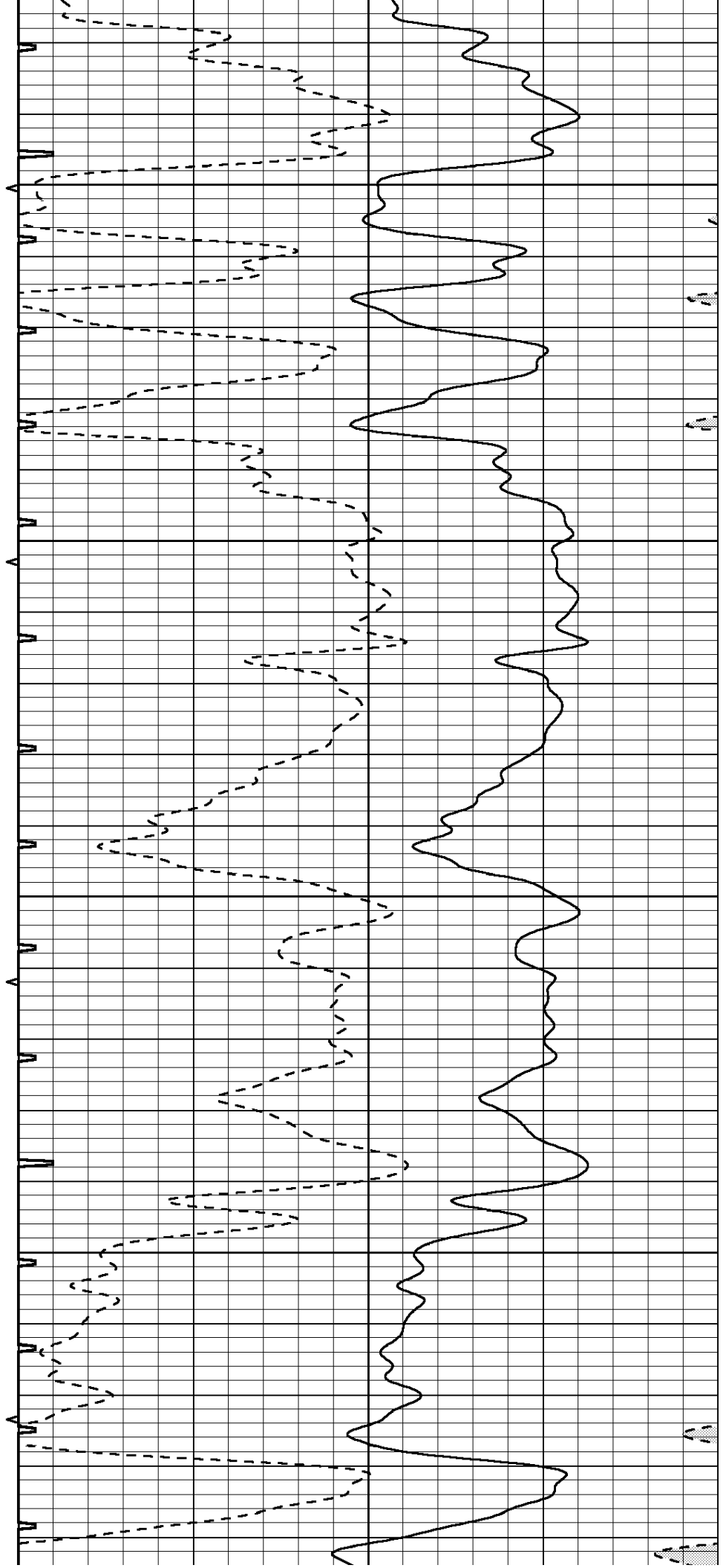


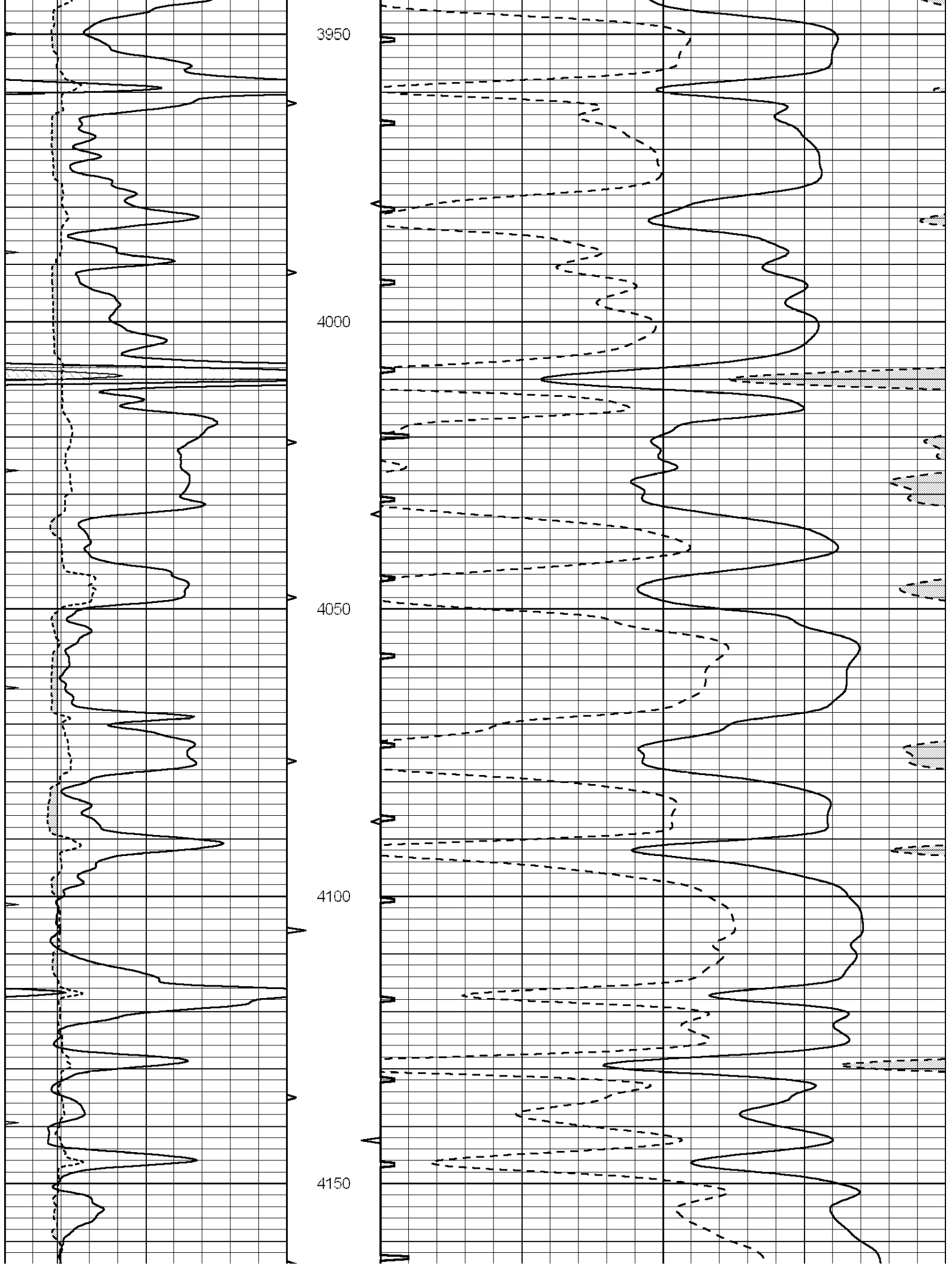
3750

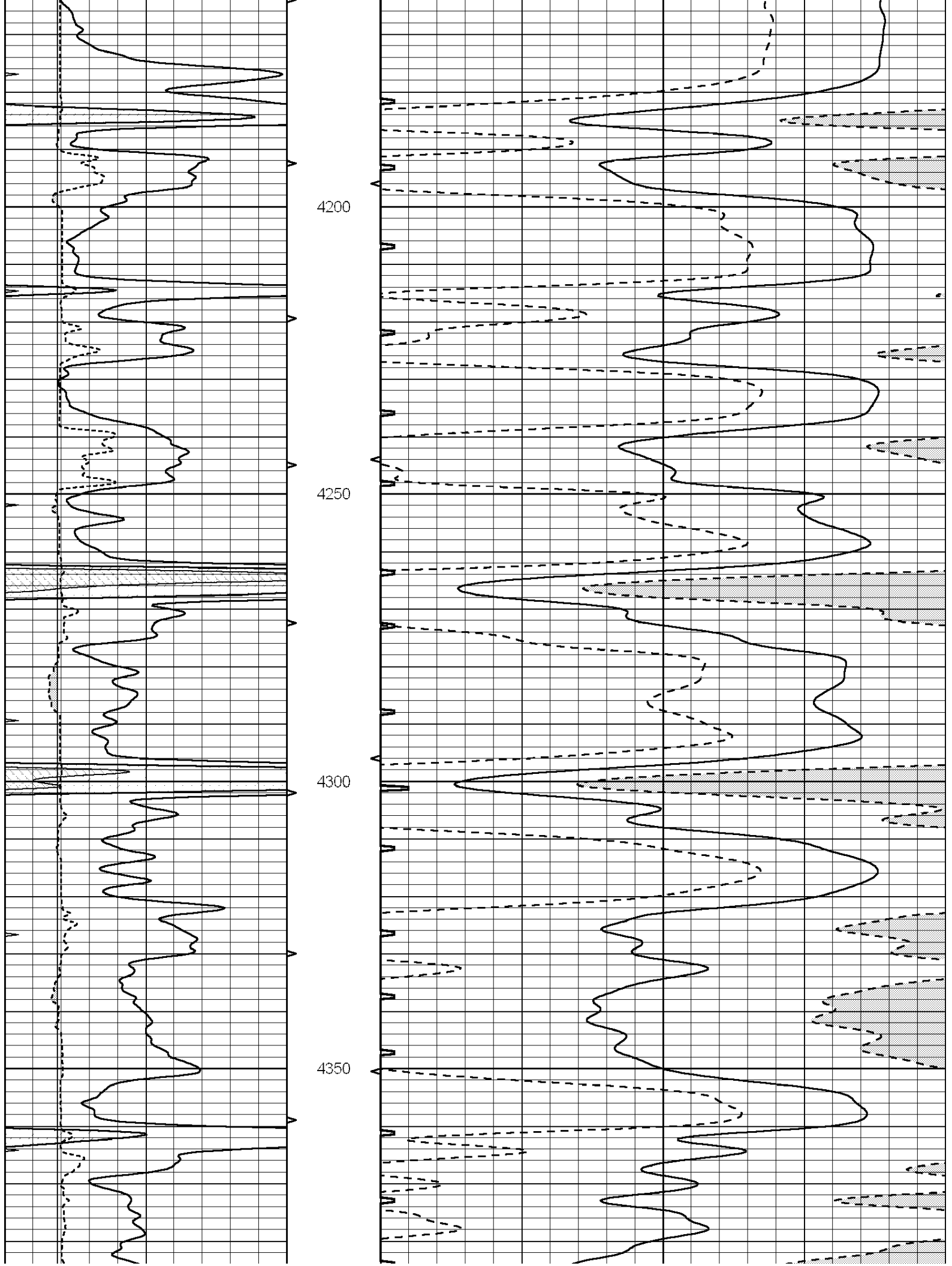
3800

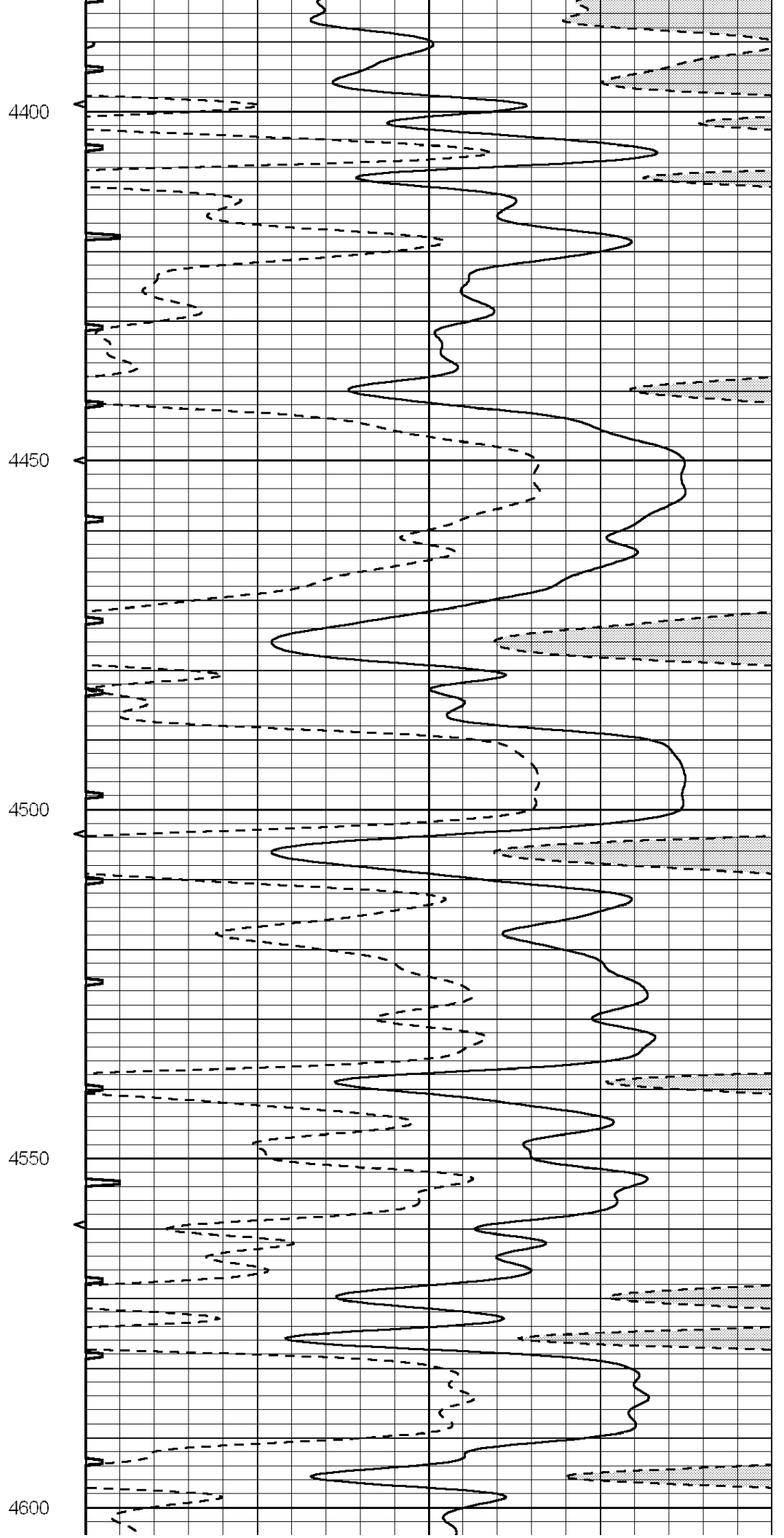
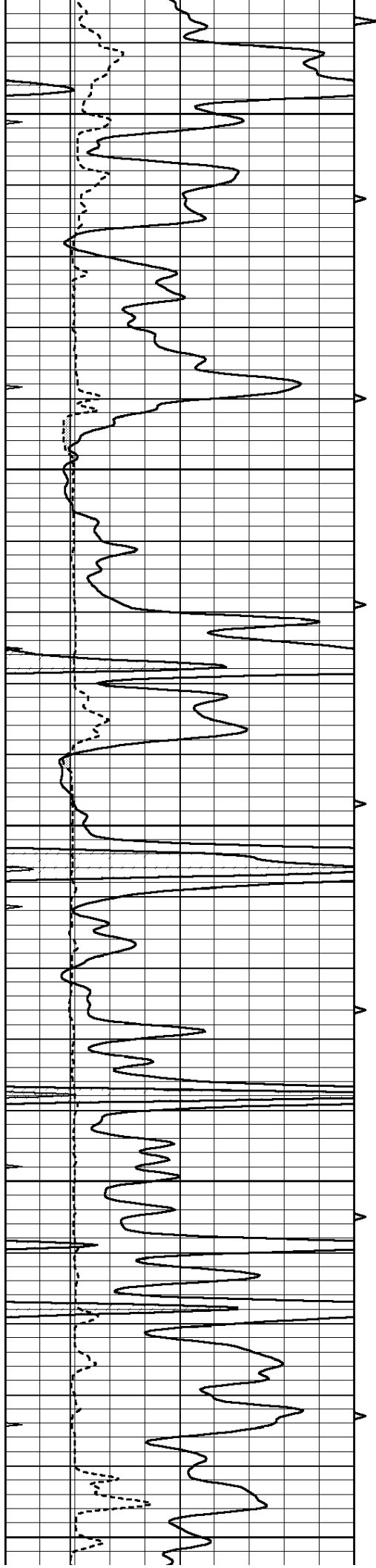
3850

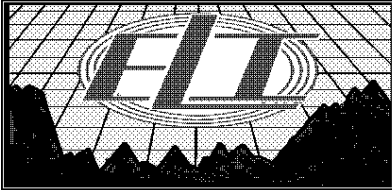
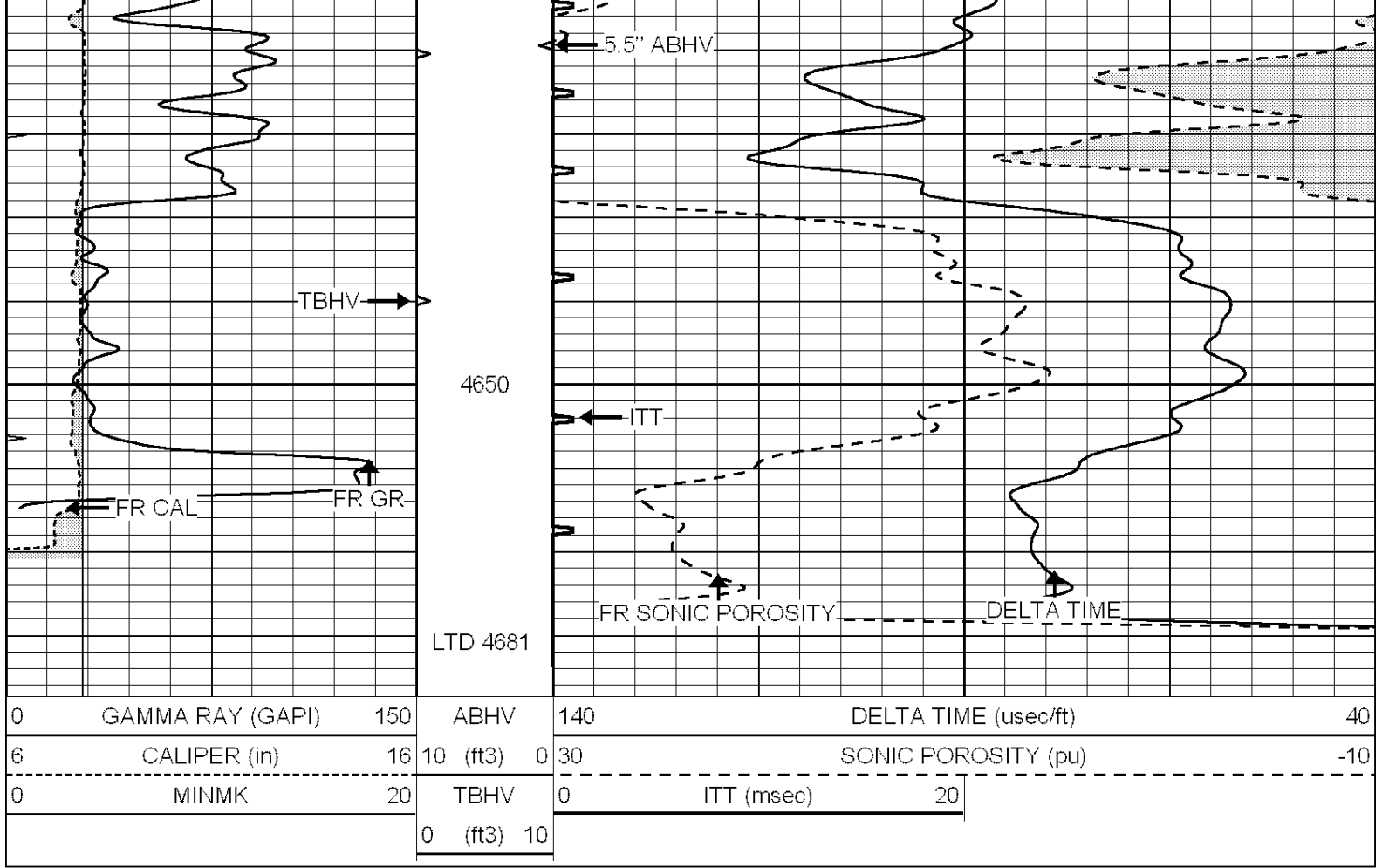
3900







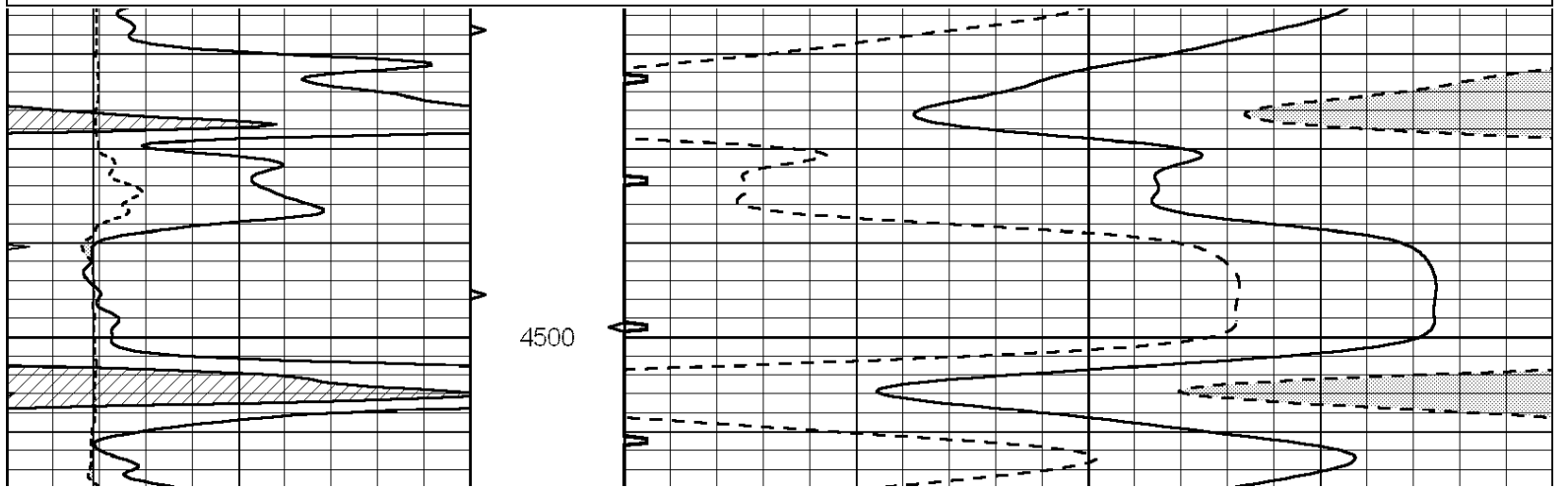


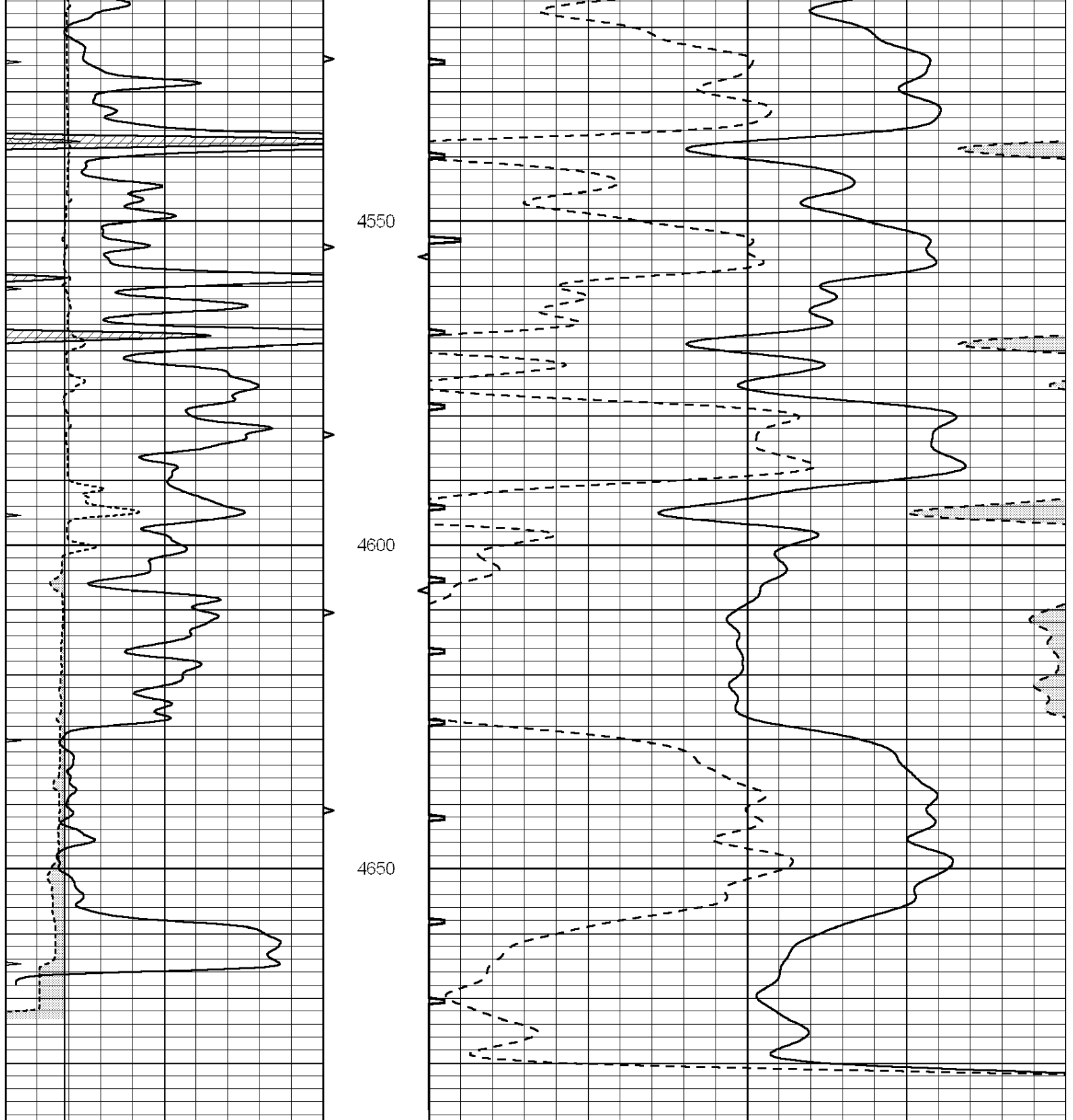


REPEAT SECTION

Database File: 3733pe.db
 Dataset Pathname: pass5.8
 Presentation Format: slt
 Dataset Creation: Sat Jun 22 11:14:08 2019 by Calc SOC 120430
 Charted by: Depth in Feet scaled 1:240

0	GAMMA RAY (GAPI)	150	ABHV	140	DELTA TIME (usec/ft)	40	
6	CALIPER (in)	16	10 (ft3)	0	30	SONIC POROSITY (pu)	-10
0	MINMK	20	TBHV	0	ITT (msec)	20	
			0 (ft3)	10			





0	GAMMA RAY (GAPI)	150	ABHV	140	DELTA TIME (usec/ft)	40
6	CALIPER (in)	16	10 (ft3)	0	30	SONIC POROSITY (pu)
0	MINMK	20	TBHV	0	ITT (msec)	20
			0 (ft3)	10		