

MICRO LOG

Company MULL DRILLING COMPANY, INC.
 Well #1-33 SCHIPPERS
 Field WILDCAT
 County THOMAS
 State KANSAS

Company MULL DRILLING COMPANY, INC.
 Well #1-33 SCHIPPERS
 Field WILDCAT
 County THOMAS
 State KANSAS

Location: API #: 15-193-21044-0000
 1243' FSL & 1732' FVL
 NE - NW - SE - SW
 Permanent Datum GROUND LEVEL Elevation 3005
 Log Measured From KELLY BUSHING 5' A.G.L.
 Drilling Measured From KELLY BUSHING
 SEC 33 TWP 10S RGE 31W
 Elevation
 K.B. 3010
 D.F. 3008
 G.L. 3005

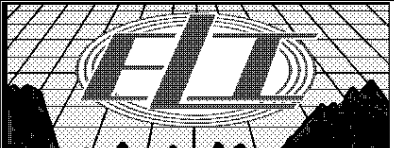
Date	6/21/19		
Run Number	TWO		
Depth Driller	4680		
Depth Logger	4681		
Bottom Logged Interval	4665		
Top Log Interval	3800		
Casing Driller	8 5/8" @ 287'		
Casing Logger	287		
Bit Size	7 7/8"		
Type Fluid in Hole	CHEMICAL MUD	CHLORIDES 3,400 PPM	
Density / Viscosity	9.4/64		
pH / Fluid Loss	10.5/8.8		
Source of Sample	FLOWLINE		
Rim @ Meas. Temp	1.00 @ 90F		
Rmf @ Meas. Temp	.750 @ 90F		
Rmc @ Meas. Temp	1.20 @ 90F		
Source of Rmf / Rmc	MEASUREMENT		
Rim @ BHT	738 @ 122F		
Time Circulation Stopped	3.5 HOURS		
Time Logger on Bottom	9:30 A.M.		
Maximum Recorded Temperature	122F		
Equipment Number	922339		
Location	HAYS, KANSAS		
Recorded By	JEFF LUEBBERS		
Witnessed By	KEVIN KESSLER		

<<< Fold Here >>>

All interpretations are opinions based on inferences from electrical or other measurements and we cannot and do not guarantee the accuracy or correctness of any interpretation, and we shall not, except in the case of gross or willful negligence on our part, be liable or responsible for any loss, costs, damages, or expenses incurred or sustained by anyone resulting from any interpretation made by any of our officers, agents or employees. These interpretations are also subject to our general terms and conditions set out in our current Price Schedule.

Comments

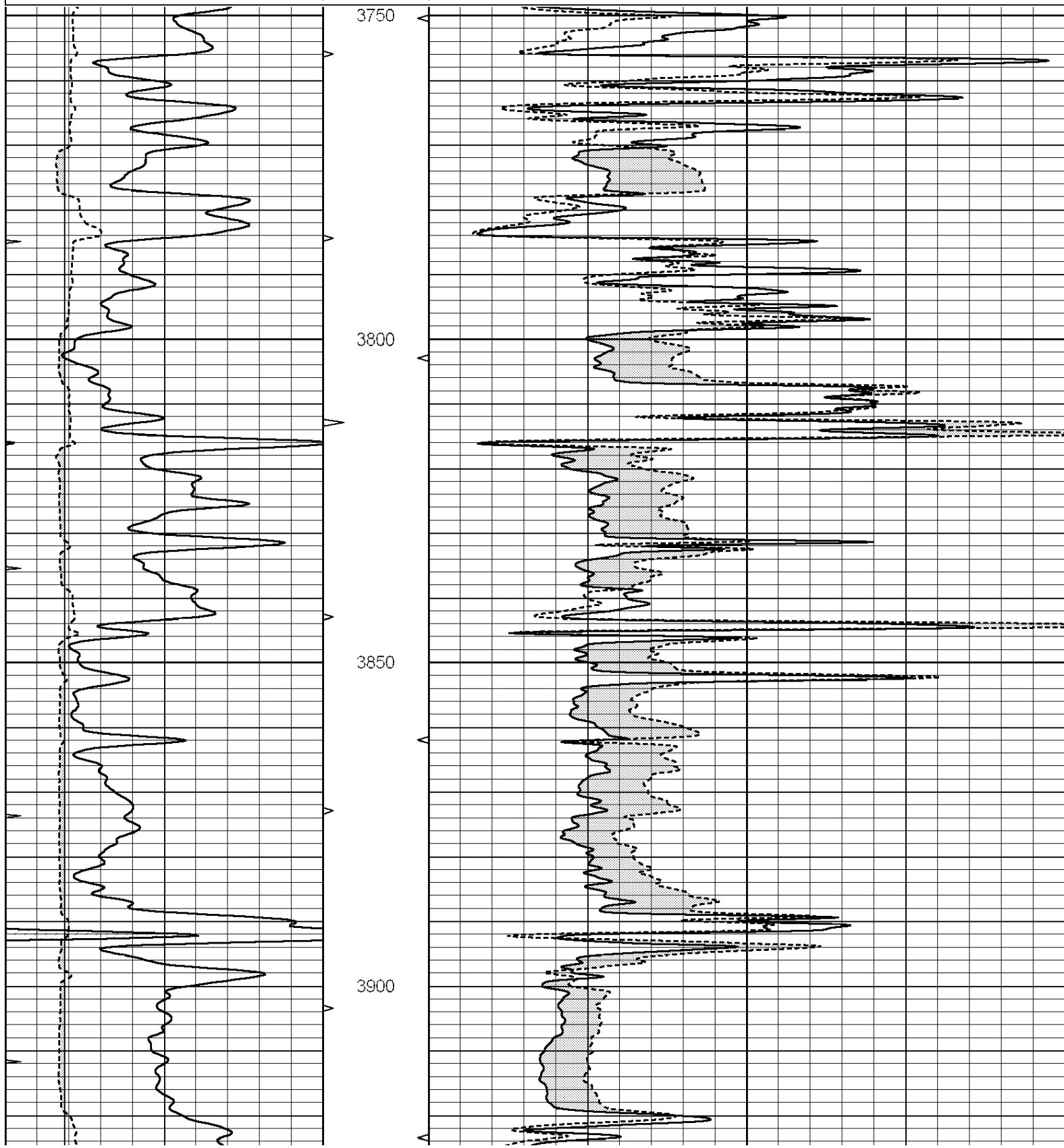
THANK YOU FOR USING ELI WIRELINE HAYS, KANSAS (785) 628-6395
 DIRECTIONS
 CAMPUS & I-70, 3N. TO "THOMAS CR B", 2 3/4W., 3/4S. INTO

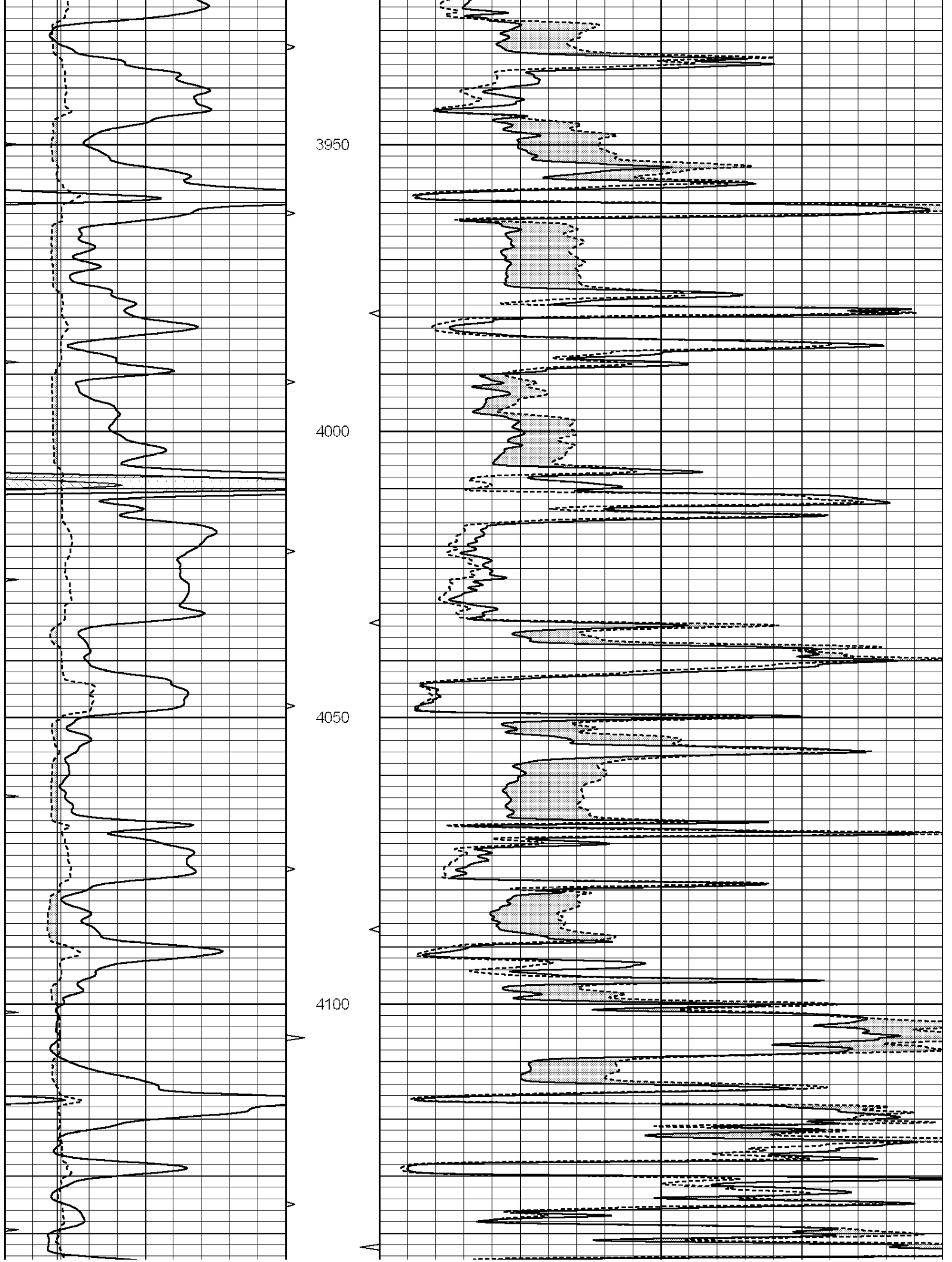


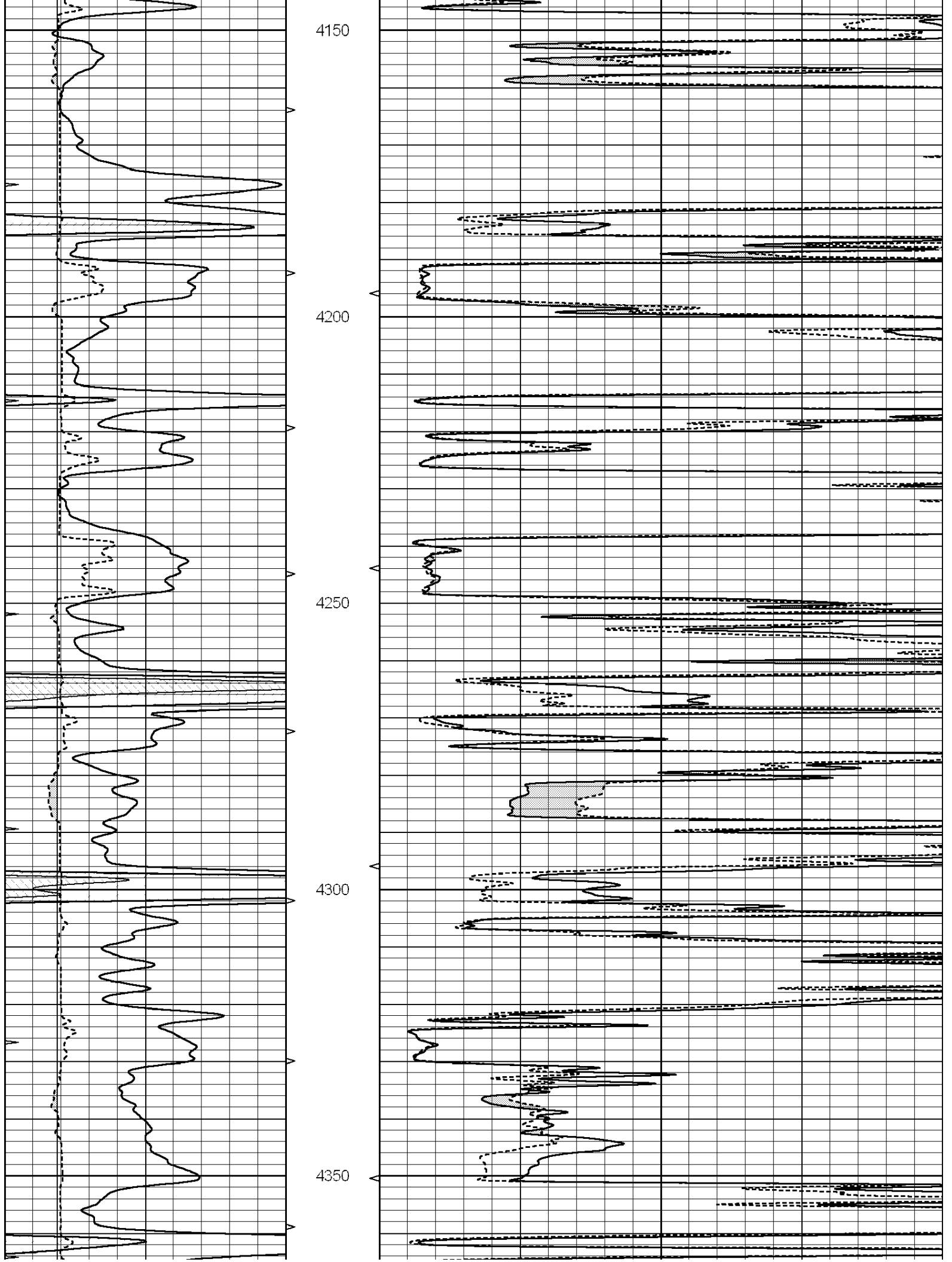
MAIN SECTION

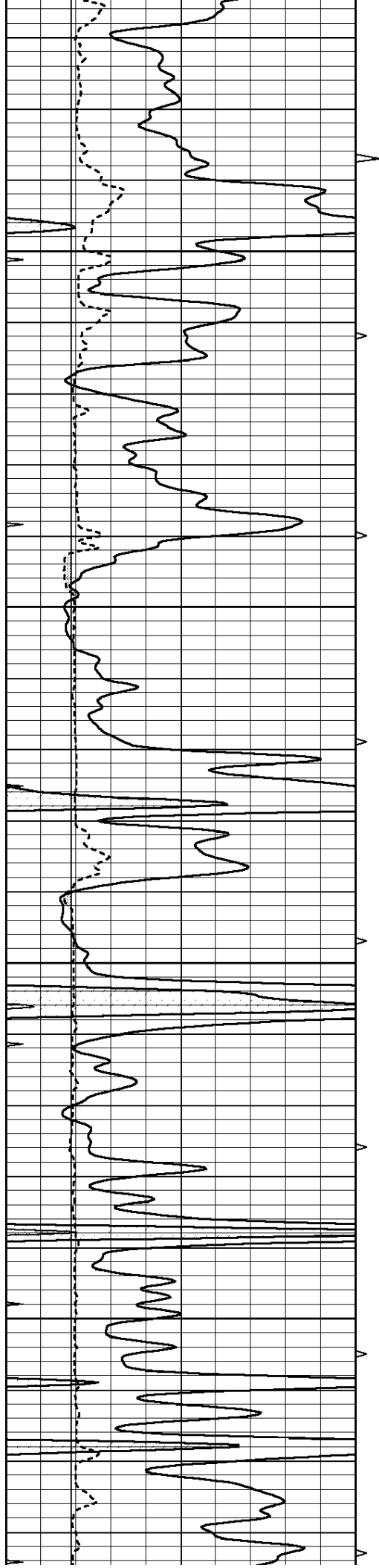
Database File: 3733pe.db
 Dataset Pathname: pass6.2
 Presentation Format: micro
 Dataset Creation: Sat Jun 22 10:09:20 2019 by Calc SOC 120430
 Charted by: Depth in Feet scaled 1:240

0	GAMMA RAY (GAPI)	150	ABHV	0	MEL1.5 (Ohm-m)	40
6	CALIPER (in)	16	10 (ft3)	0 0	MEL 20 (Ohm-m)	40
0	MINMK	20	TBHV			
			0 (ft3)	10		







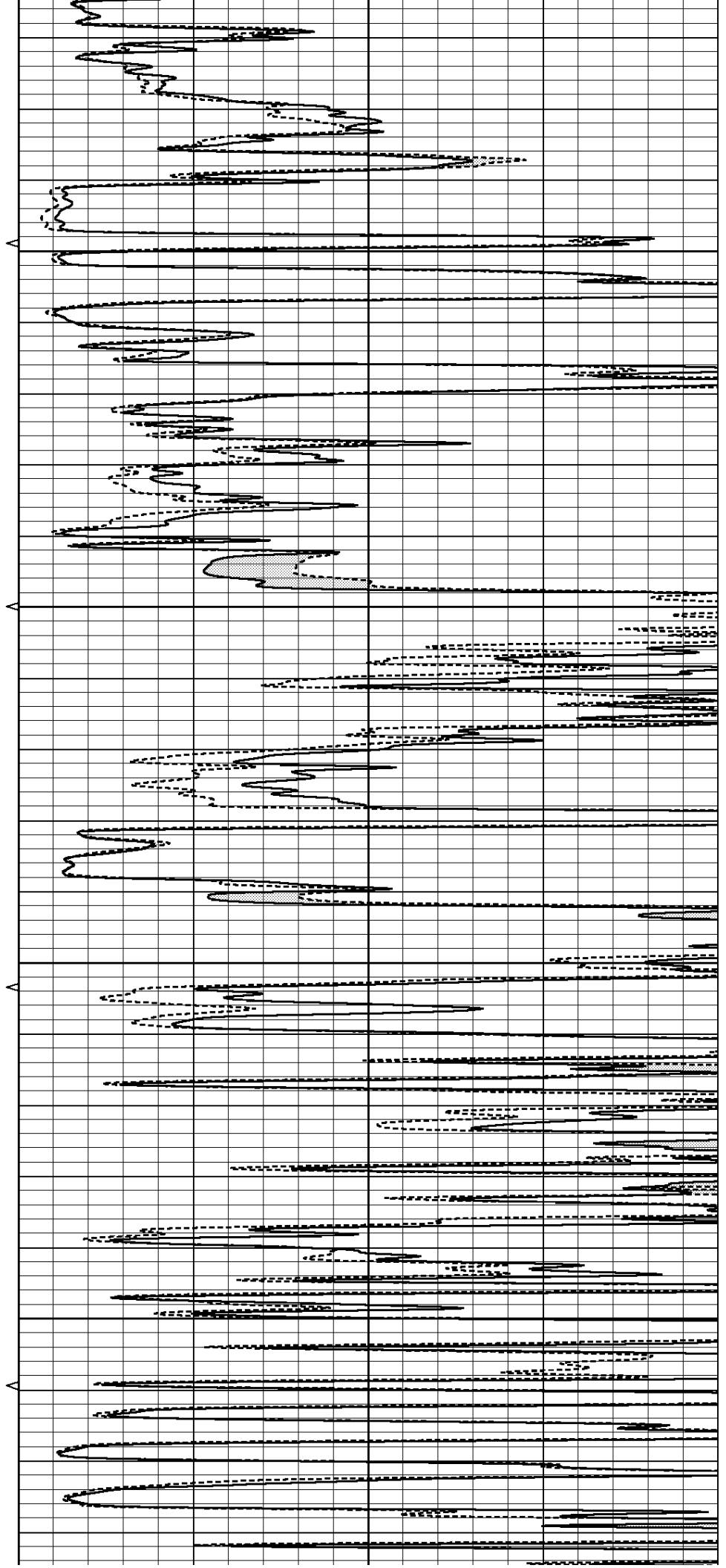


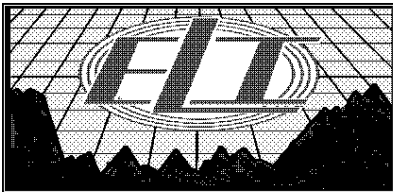
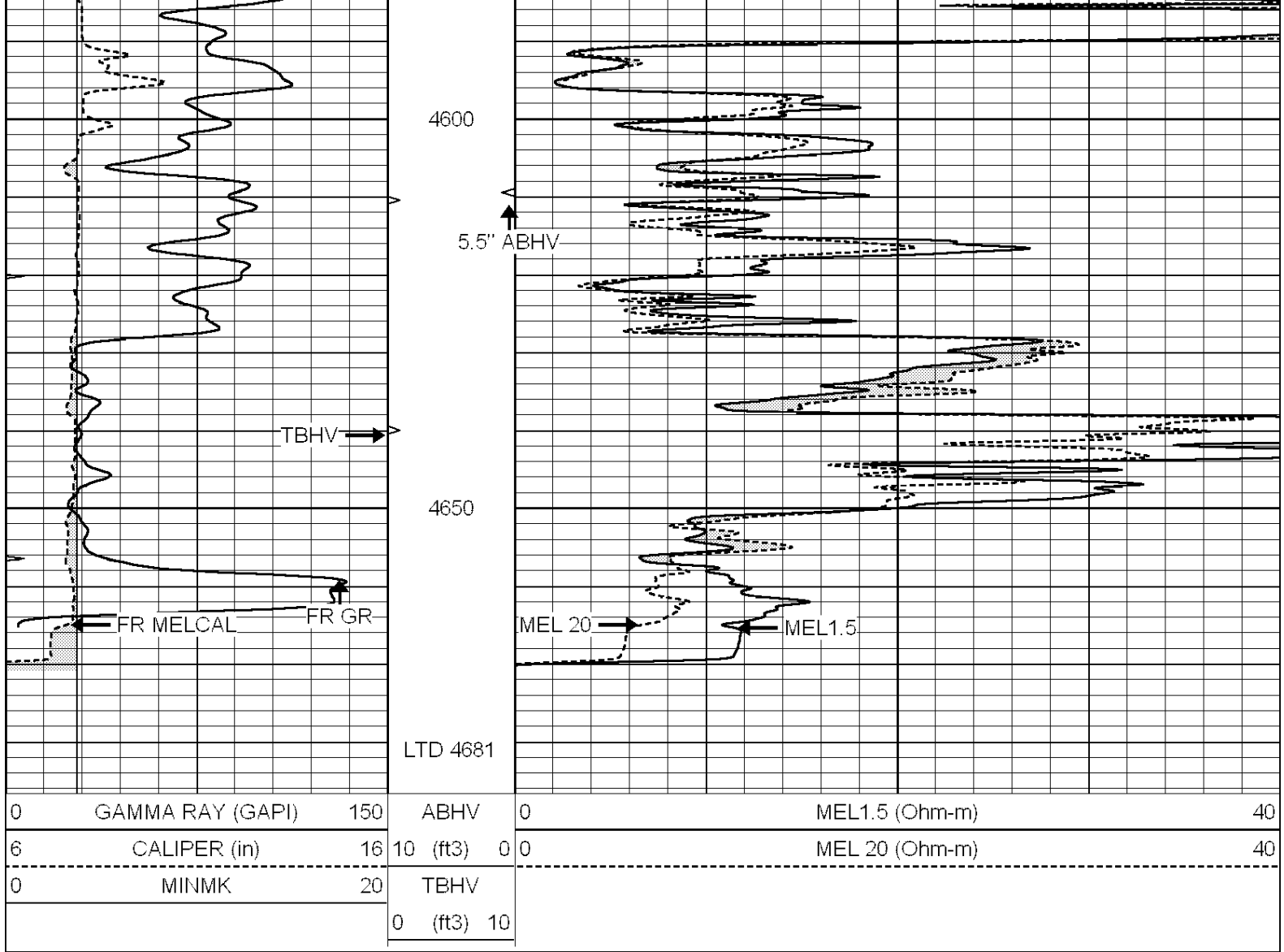
4400

4450

4500

4550

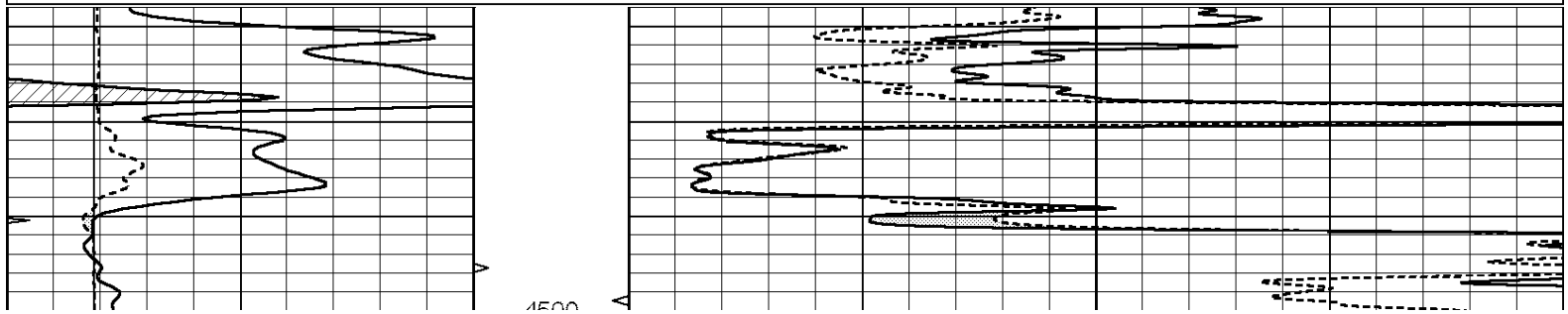


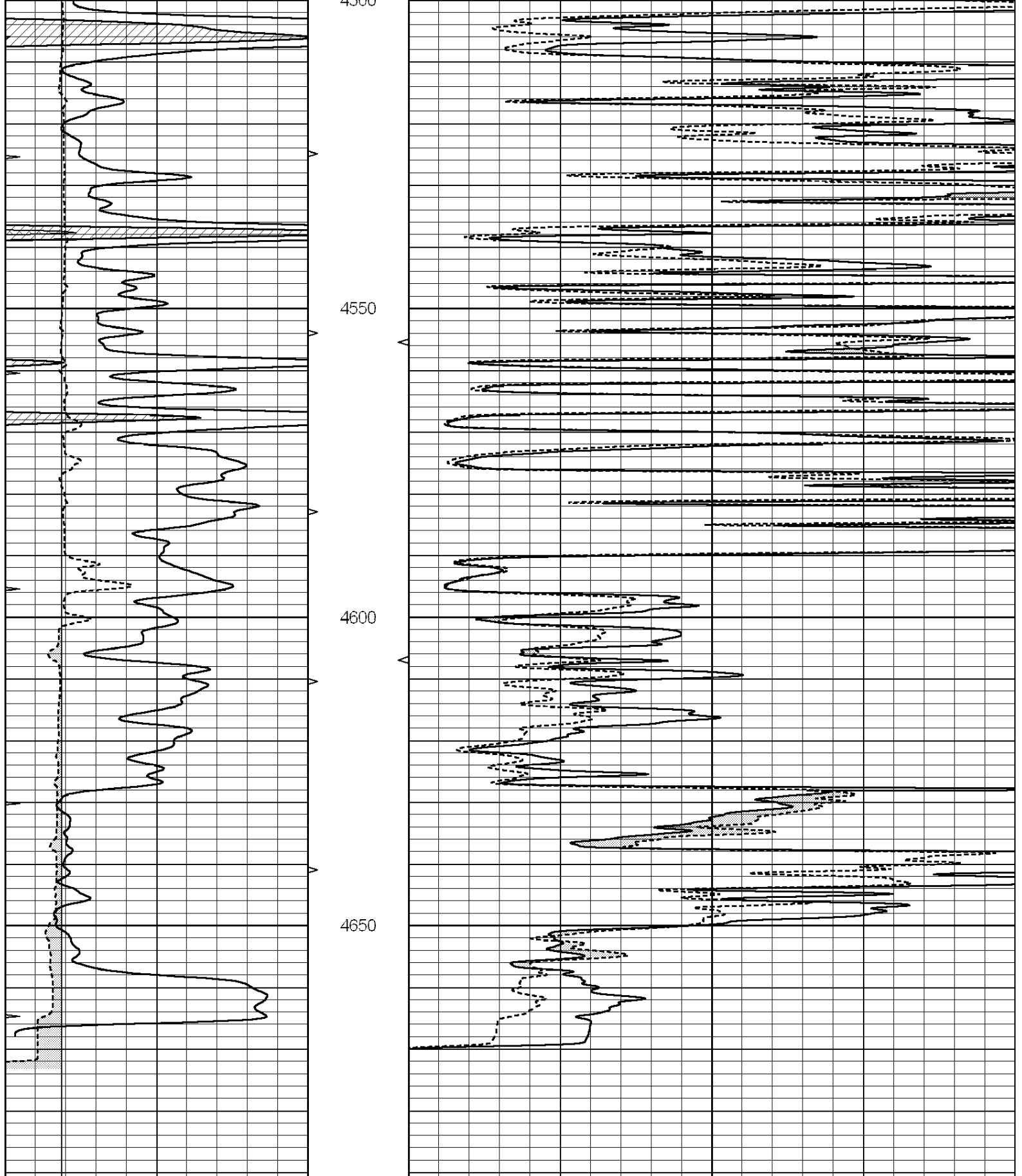


REPEAT SECTION

Database File: 3733pe.db
 Dataset Pathname: pass5.7
 Presentation Format: micro
 Dataset Creation: Sat Jun 22 10:18:18 2019
 Charted by: Depth in Feet scaled 1:240

0	GAMMA RAY (GAPI)	150	ABHV	0	MEL1.5 (Ohm-m)	40
6	CALIPER (in)	16	10 (ft3)	0 0	MEL 20 (Ohm-m)	40
0	MINMK	20	TBHV			
			0 (ft3)	10		





0	GAMMA RAY (GAPI)	150	ABHV	0	MEL1.5 (Ohm-m)	40
6	CALIPER (in)	16	10 (ft3)	0 0	MEL20 (Ohm-m)	40
0	MINMK	20	TBHV			
			0 (ft3)	10		

Calibration Report

Database File: 3733pe.db
 Dataset Pathname: pass5.7
 Dataset Creation: Sat Jun 22 10:18:18 2019

MICRO Calibration Report

Serial Number: 070912
 Tool Model: ProbeN
 Performed: Wed Jun 12 08:52:34 2019

Caliper Calibration:	Gain=4.040	Offset=-0.180
	Low Cal	High Cal
References	7.900	18.000
Readings	2.000	4.500

1.5" Calibration:	Gain=38.000	Offset=-0.400
	Low Cal	High Cal
References	0.000	20.000
Readings	0.002	1.239

2" Calibration:	Gain=55.000	Offset=-1.000
	Low Cal	High Cal
References	0.000	20.000
Readings	0.003	1.075

Gamma Ray Calibration Report

Serial Number: 070559
 Tool Model: OPEN_GR
 Performed: Wed Jun 12 08:08:27 2019

Calibrator Value:	1.0	GAPI
Background Reading:	0.0	cps
Calibrator Reading:	1.0	cps
Sensitivity:	0.2500	GAPI/cps