



DUAL COMP POROSITY LOG

Company VAL ENERGY, INC.
Well WRIGHT FARMS #1-2
Field UNKNOWN
County SHERMAN **State** KANSAS

Company VAL ENERGY, INC.
Well WRIGHT FARMS #1-2
Field UNKNOWN
County SHERMAN
State KANSAS

Location: API #: 15-181-20614-00-00
 1372' FNL & 1204' FEL
 SEC 2 TWP 8S RGE 37W
 Permanent Datum GROUND LEVEL Elevation 3452'
 Log Measured From KELLY BUSHING
 Drilling Measured From KELLY BUSHING
 Other Services DIL/MEL BHCs
 Elevation K.B. 3457'
 D.F. N/A
 G.L. 3452'

Date	7/15/2018
Run Number	ONE
Type Log	CNL/CDL
Depth Driller	5000'
Depth Logger	4999'
Bottom Logged Interval	4970'
Top Logged Interval	4000'
Type Fluid In Hole	CHEMICAL
Salinity, PPM CL	9200
Density	9.3
Level	FULL
Max. Rec. Temp. F	126
Operating Rig Time	5 HOURS
Equipment -- Location	91 HAYS
Recorded By	D. SCHMIDT
Witnessed By	TIM PRIEST

Run No.	Bit	Borehole Record			Casing Record		
		From	To	Size	Wgt.	From	To
ONE	12.25"	0'	345'	8.625"	23#	0'	345'
TWO	7.875"	345'					

<<< Fold Here >>>

All interpretations are opinions based on inferences from electrical or other measurements and Pioneer Wireline Services, LLC cannot and does not guarantee the accuracy or correctness of any interpretation, and Pioneer Wireline Services, LLC will not be liable or responsible for any loss, costs, damages, or expenses incurred or sustained by anyone resulting from any interpretation made by any of our officers, agents or employees.

Comments

N/A DENOTES NOT AVAILABLE OR NON-APPLICABLE.

BREWSTER,
2 NORTH, 2 WEST,
SOUTH INTO






Log Measured From: KELLY BUSHING 5 Ft. Above Permanent Datum

THANK YOU FOR USING PIONEER ENERGY SERVICES
www.pioneerenergy.com 785-625-3858

Your Pioneer Energy Services Crew Engineer: D. SCHMIDT Operator: Operator: Operator:	This Log Record Was Witnessed By Primary Witness: TIM PRIEST Secondary Witness: Secondary Witness: Secondary Witness:
---	--

Top - Bottom

M	A	SZCOR	NPORSEL	FLUIDDEN g/cc	MATRXDEN g/cc	SPSHIFT mV	SNDERRM mmho/m
2	1	Off	Limestone	1	2.71	-265	0
SNDERR mmho/m	SRFTEMP degF	CASETHCK in	CASEOD in	PERFS	TDEPTH ft	BOTTEMP degF	BOREID in
0	80	0	5.5	0	4999	126	7.875

Sensor	Offset (ft)	Schematic	Description	Length (ft)	O.D. (in)	Weight (lb)
GR	40.58		GR-M&W (89)	3.00	3.50	50.00
CNLSC CNSSC	37.48 36.73		CNT-M&W (207-MW)	5.50	3.50	100.00
LSD DCAL SSD	28.43 28.42 27.93		CDL-M&W (817-947)	8.50	4.00	250.00
MCAL MI MN	19.83 19.83 19.83		ML-PSIML (PSI-01) GO Micro log tools converted to Simplec electronics	7.58	4.00	65.00
RLL3F RLL3	15.80 15.80					

CILD 8.00

CILM 4.70

SP 0.20

DIL-PSI HIGH TEMP (933 (HT))

18.50

3.50

220.00

Dataset: val_wright farms 1-2.db: field/well/STKML/pass3.4
 Total length: 43.08 ft
 Total weight: 685.00 lb
 O.D.: 4.00 in

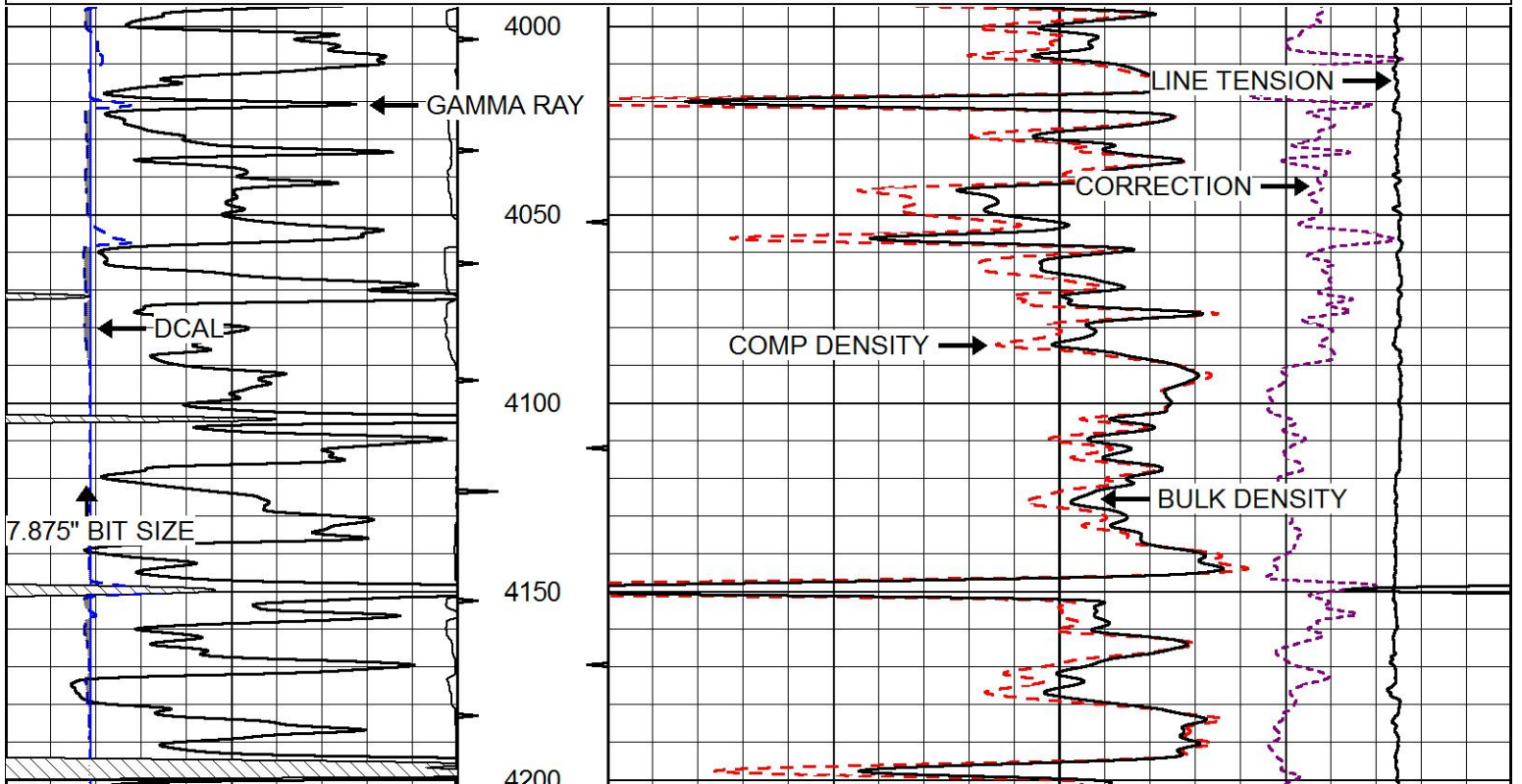


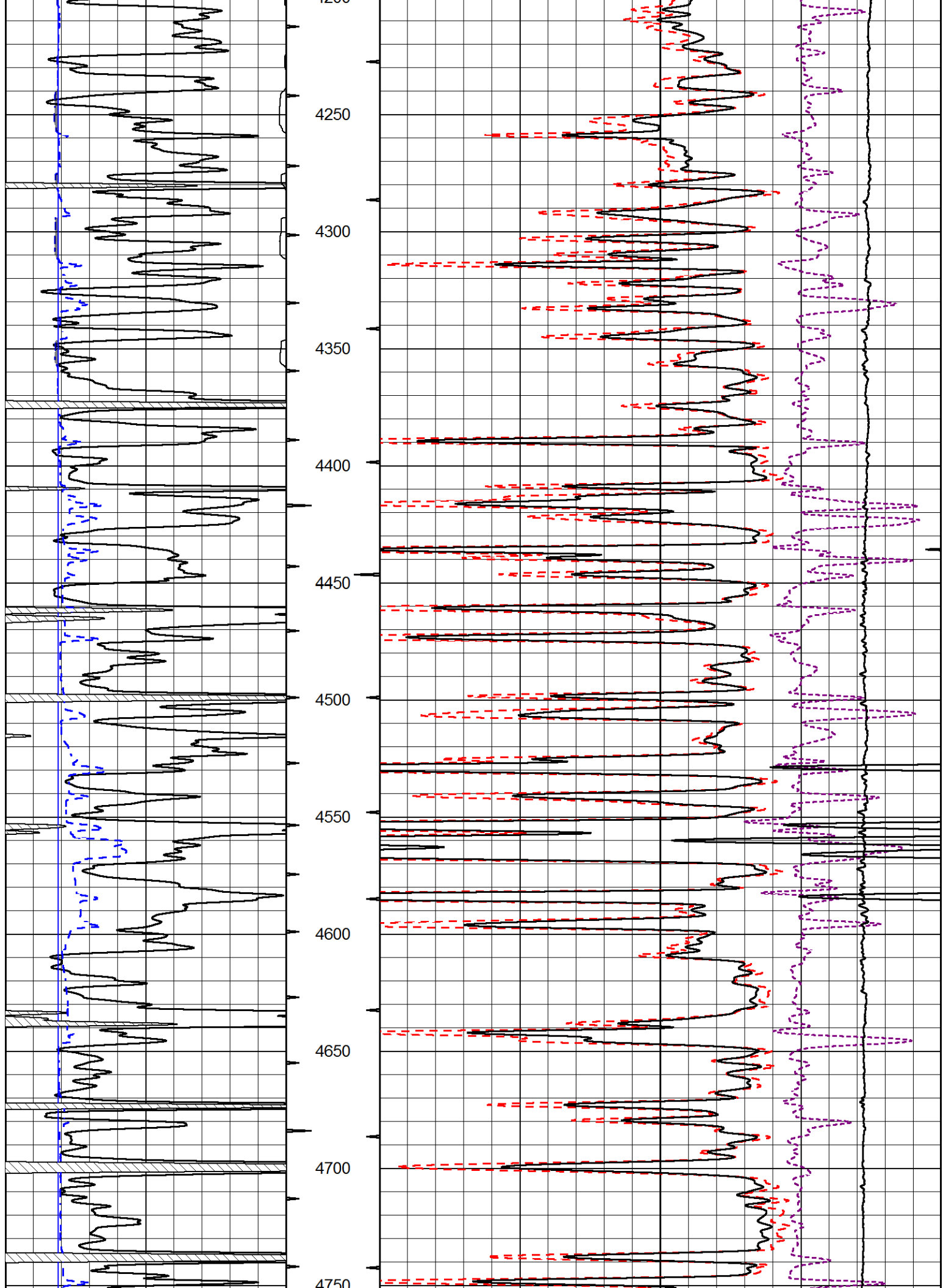
MAIN PASS

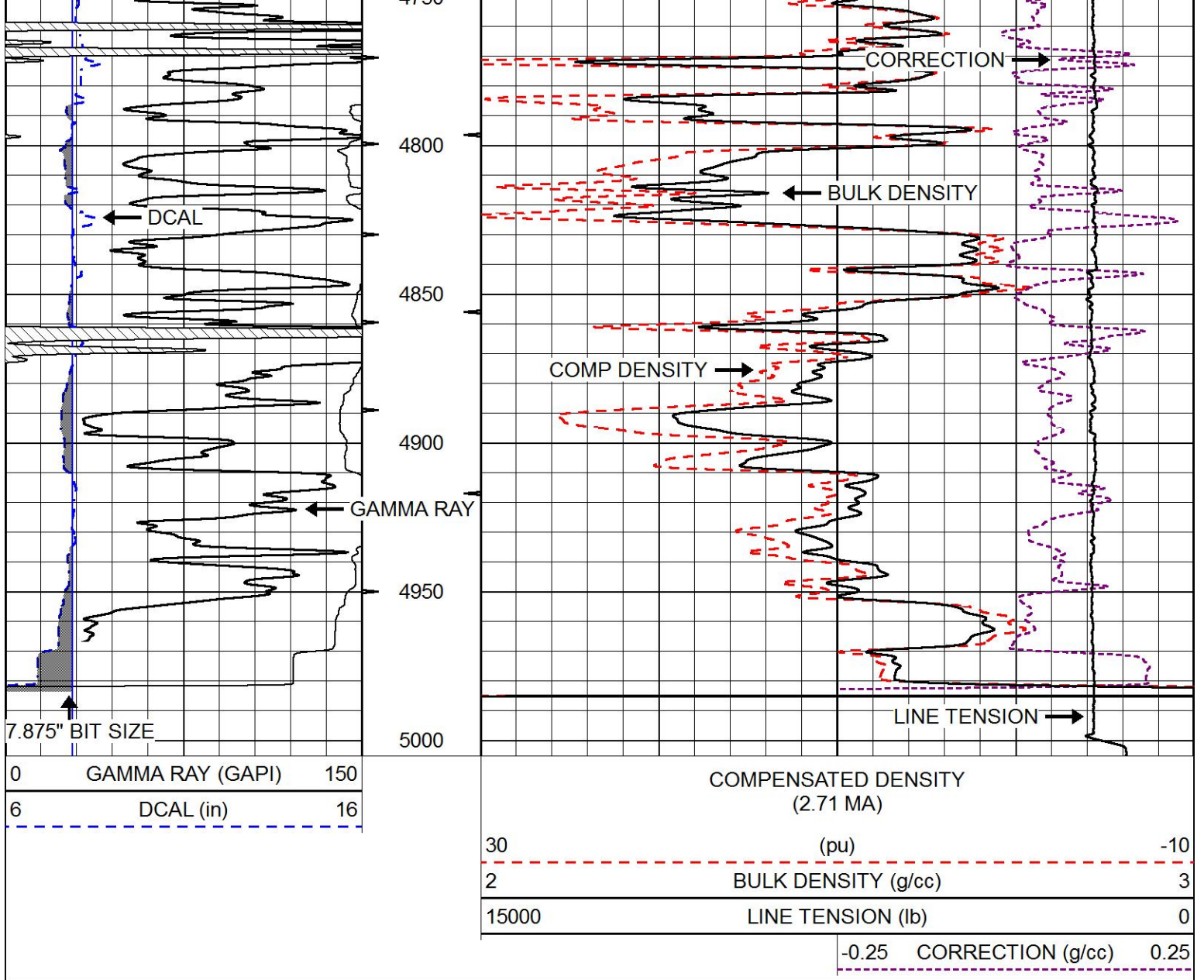
Database File val_wright farms 1-2.db
 Dataset Pathname STKML/pass3.1
 Presentation Format cdl
 Dataset Creation Sun Jul 15 22:09:11 2018
 Charted by Depth in Feet scaled 1:600

0	GAMMA RAY (GAPI)	150
6	DCAL (in)	16

COMPENSATED DENSITY (2.71 MA)	
30	(pu) -10
2	BULK DENSITY (g/cc) 3
15000	LINE TENSION (lb) 0
-0.25	CORRECTION (g/cc) 0.25





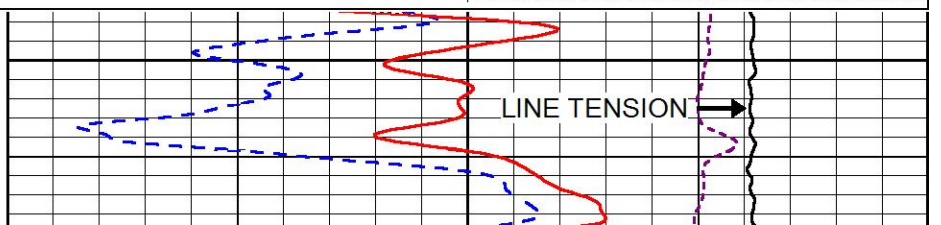
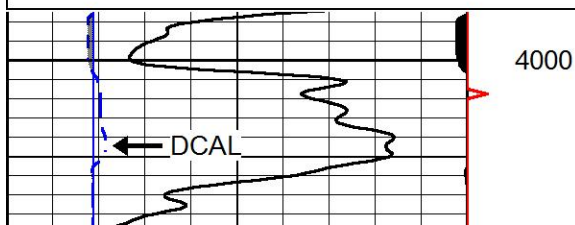


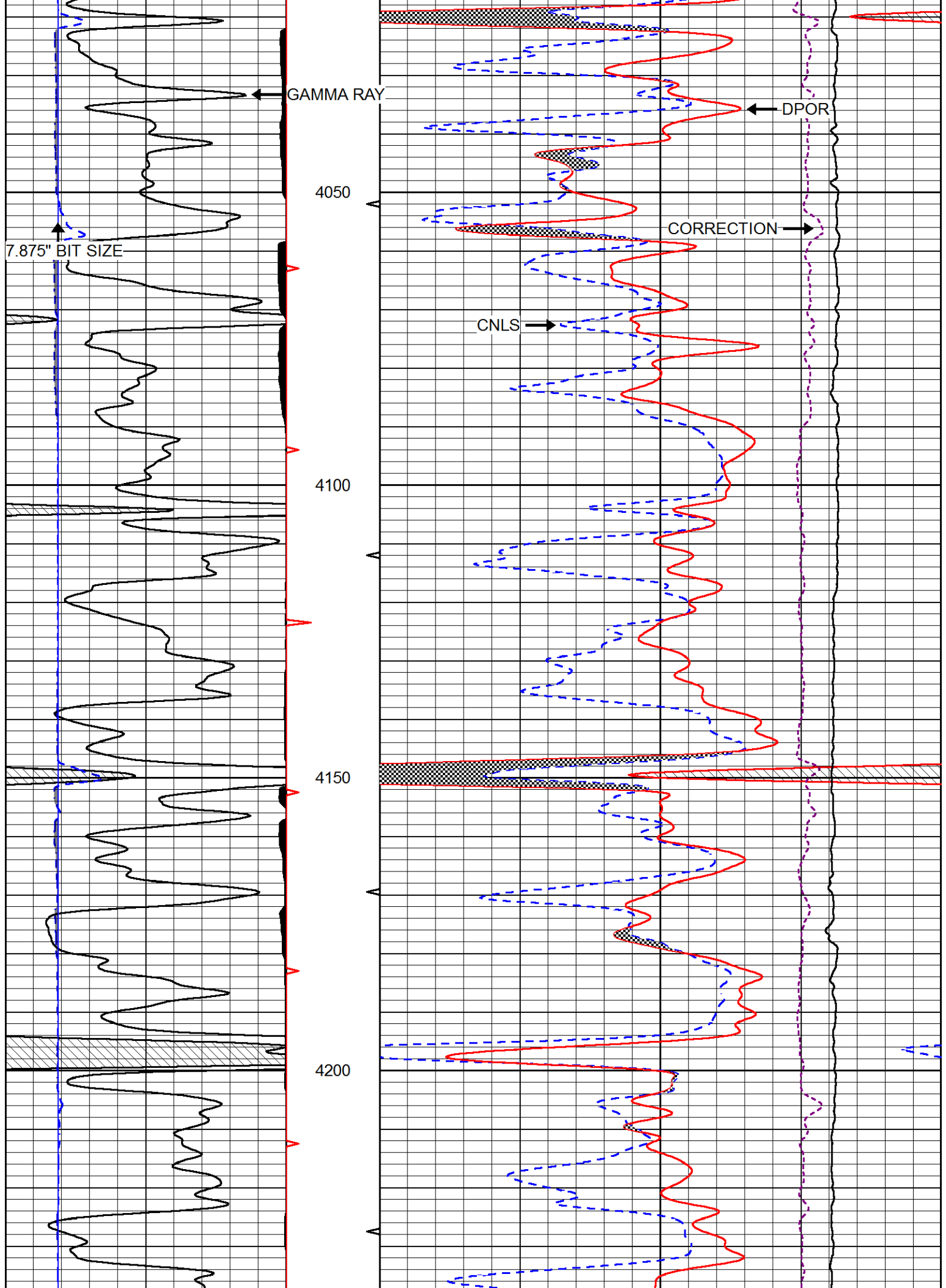
MAIN PASS

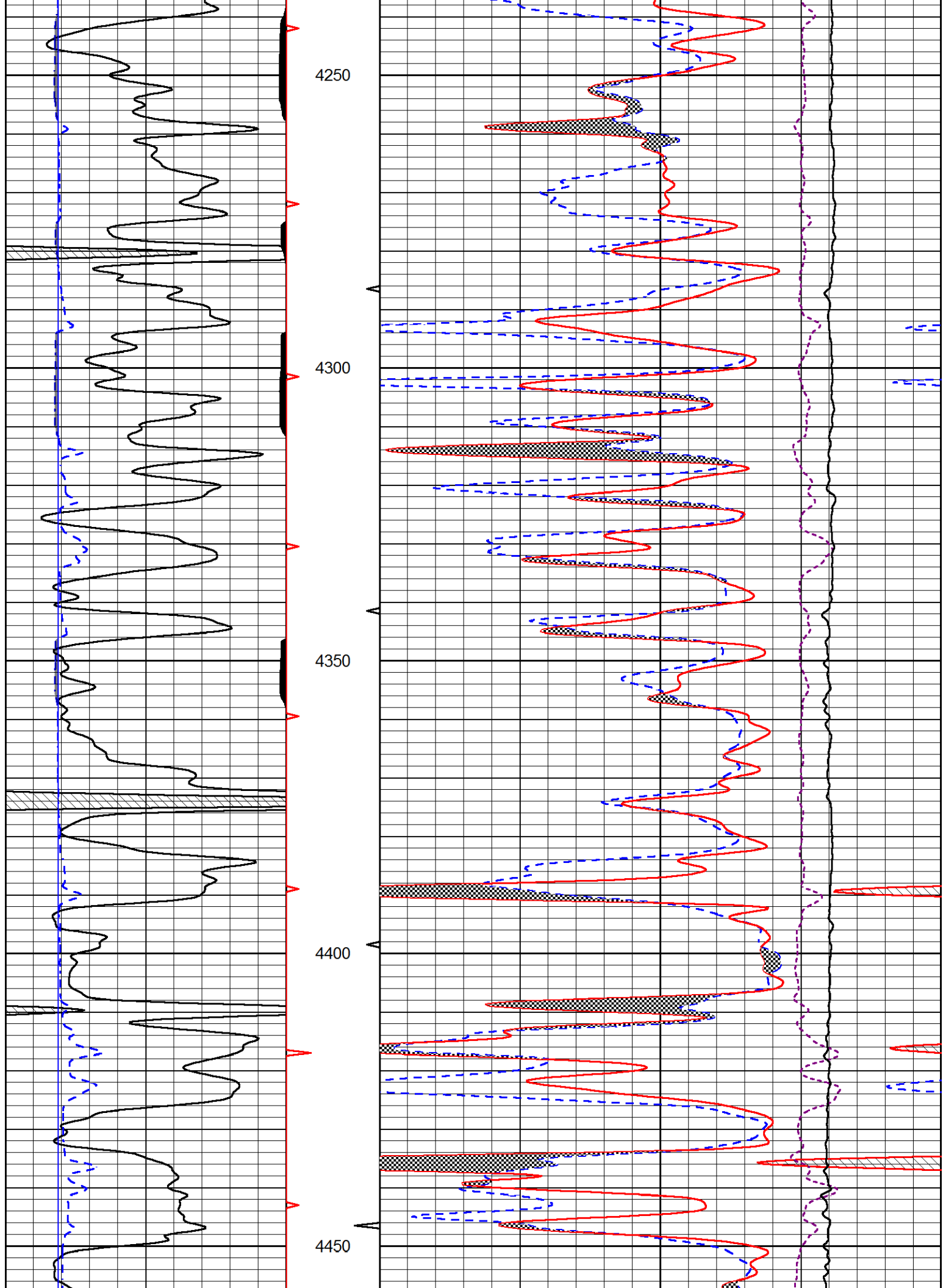
Database File val_wright farms 1-2.db
 Dataset Pathname STKML/pass3.1
 Presentation Format cndlspec
 Dataset Creation Sun Jul 15 22:09:11 2018
 Charted by Depth in Feet scaled 1:240

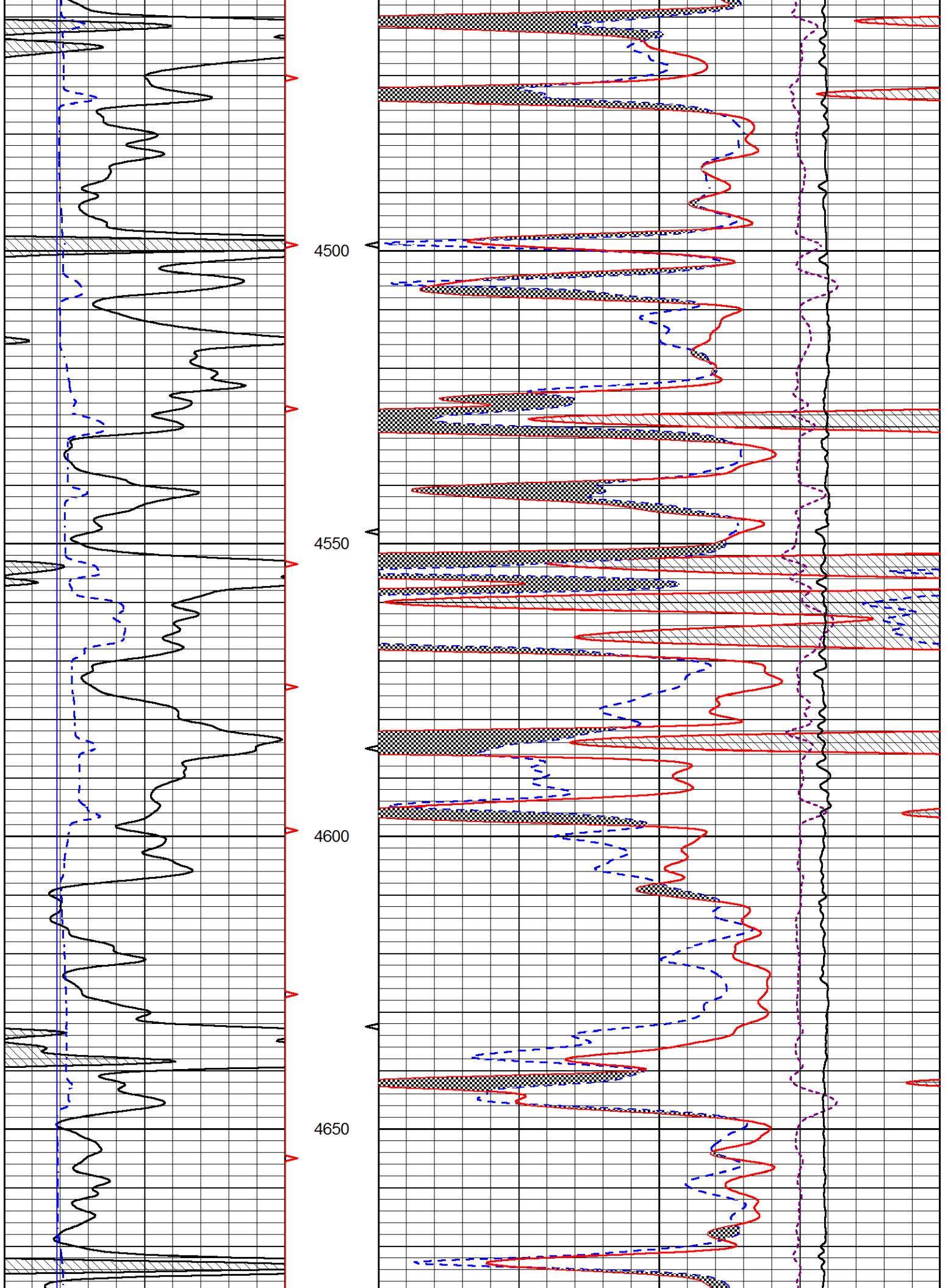
0	GAMMA RAY (GAPI)	150
6	DCAL (in)	16

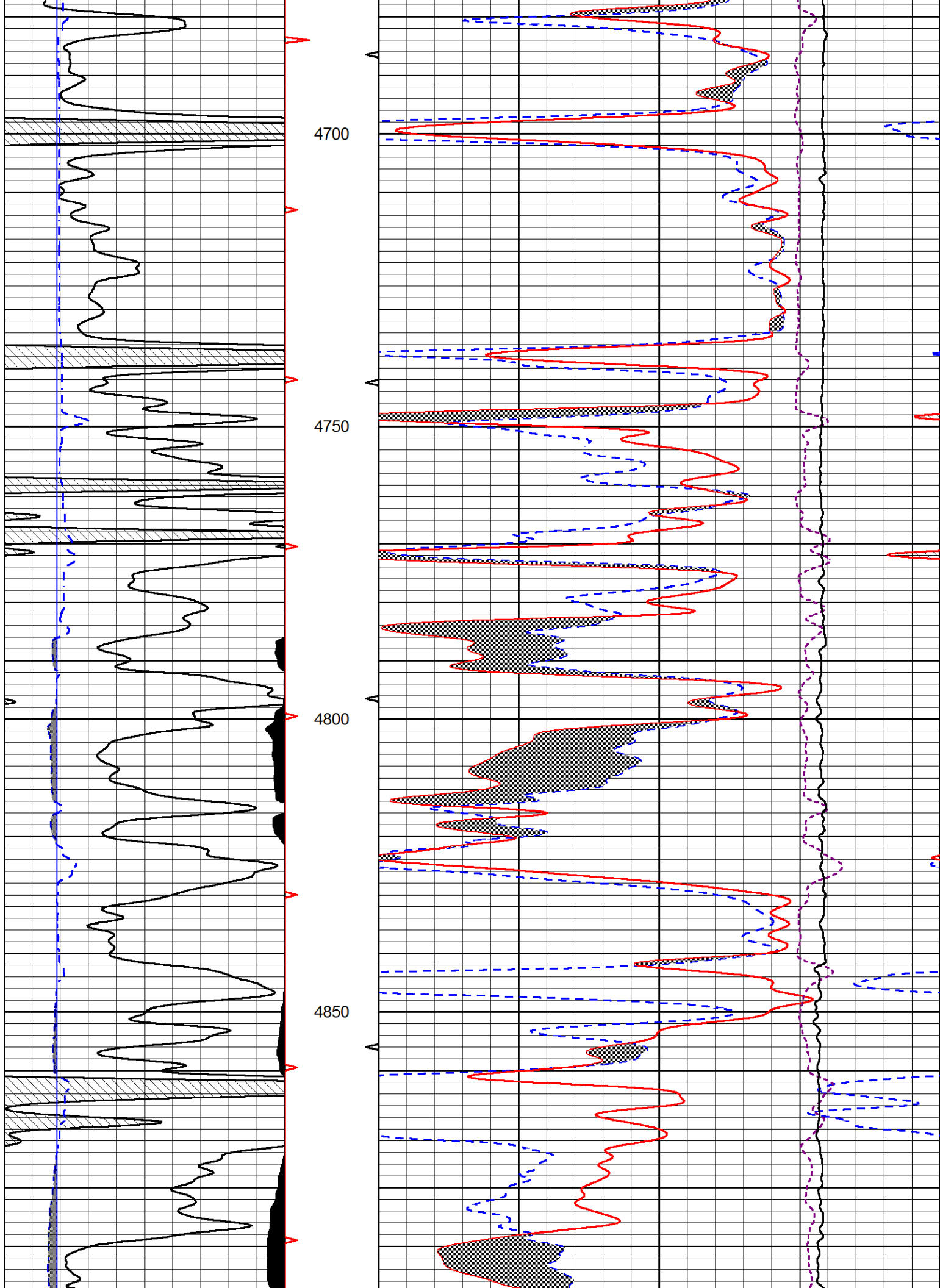
30	CNLS (pu)	-10
30	DPOR (pu)	-10
10000	LINE TENSION (lb)	0
-0.75	CORRECTION (g/cc)	0.75

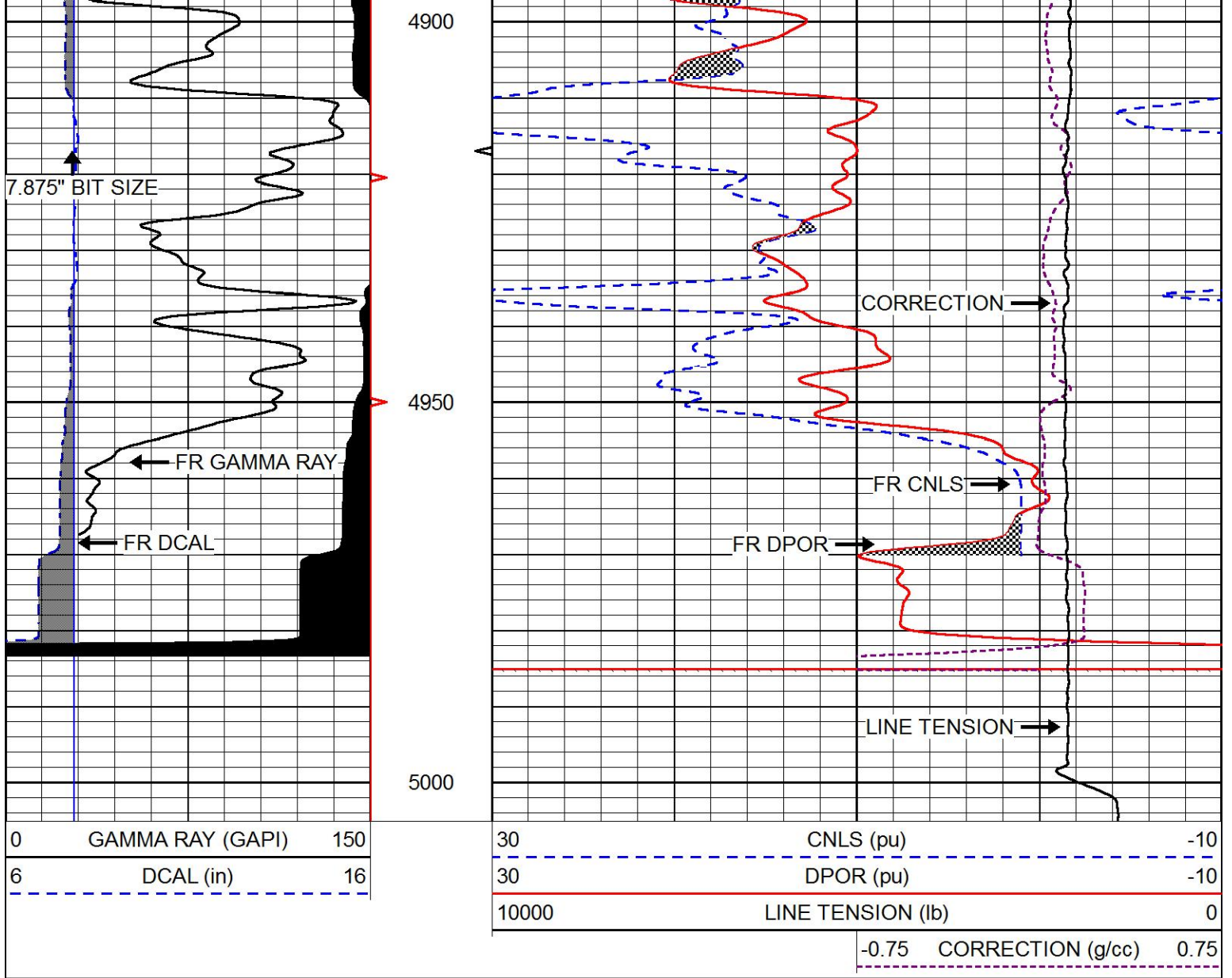






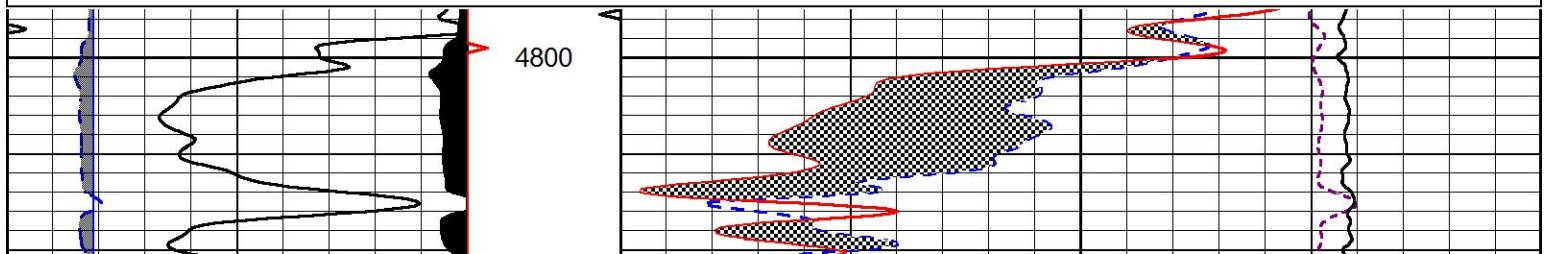
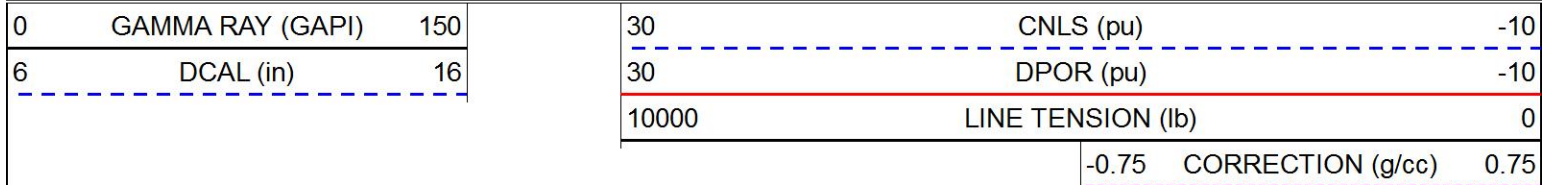


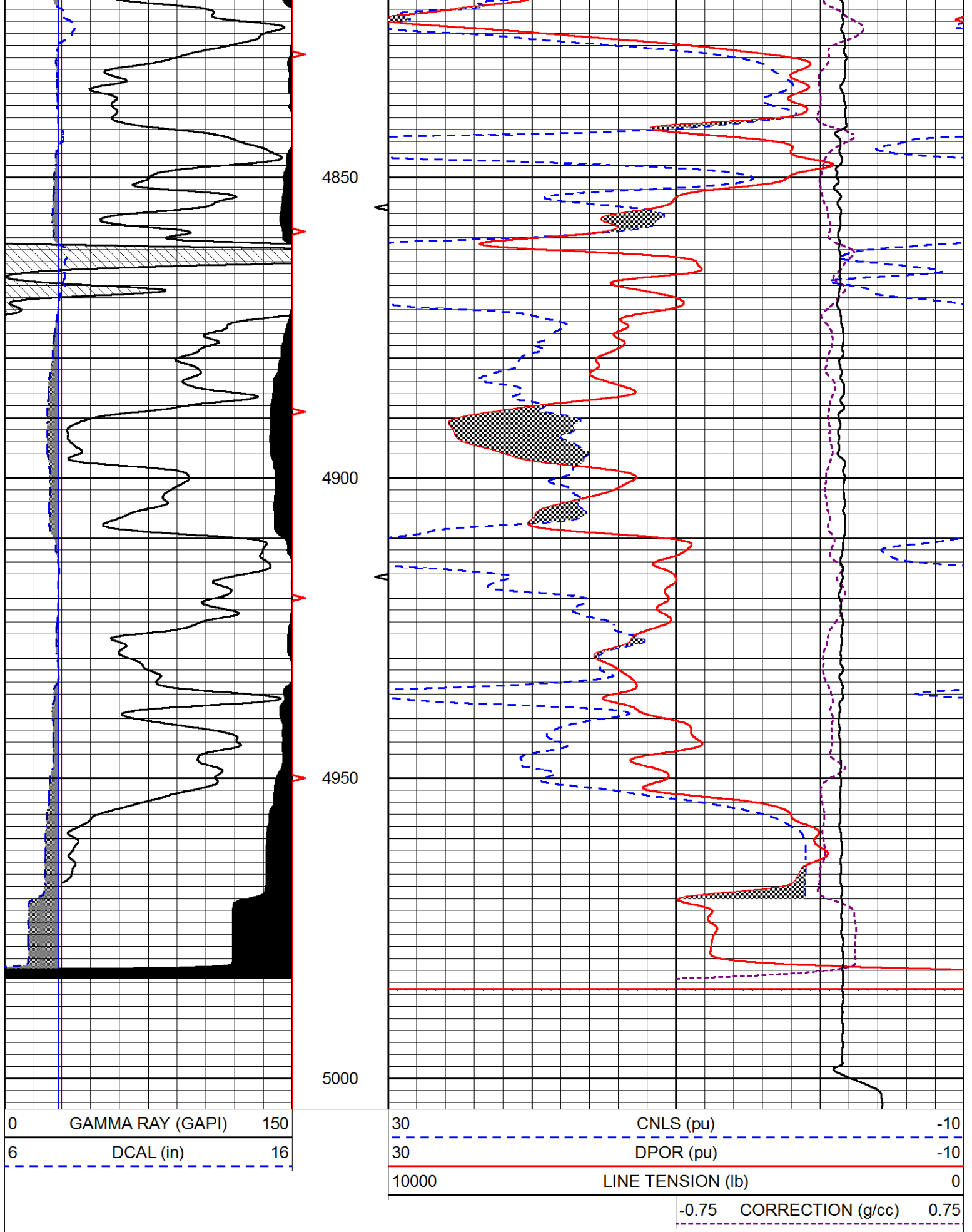




REPEAT SECTION

Database File val_wright farms 1-2.db
 Dataset Pathname STKML/pass2.1
 Presentation Format cndlspec
 Dataset Creation Sun Jul 15 21:59:27 2018
 Charted by Depth in Feet scaled 1:240





Calibration Report

Database File val_wright farms 1-2.db
 Dataset Pathname QTKM\apps2\1

Dual Induction Calibration Report

Serial-Model: 933 (HT)-PSI HIGH TEMP
 Calibration Performed: Sun Jul 15 05:36:29 2018

Loop:	Readings		References			Results	
	Air	Loop	Air	Loop		Gain	Offset
Deep	167.000	835.000	0.000	255.000	mmho/m	0.700	-17.000
Medium	142.000	1349.000	0.000	255.000	mmho/m	0.565	-60.500

Microlog Calibration Report

Serial-Model: PSI-01-PSIML
 Performed: Sun Jul 15 07:40:28 2018

	Readings		References			Results	
	Zero	Cal	Zero	Cal		m	b
Normal	0.0000	1.0000	0.0000	1.0000	Ohm-m	60000.0000	-1.5000
Inverse	0.0000	1.0000	0.0000	1.0000	Ohm-m	62000.0000	-0.7000
Caliper	1.0001	1.1397	6.5000	18.5000	in	70.0000	-66.2500

Compensated Density Calibration Report

Serial-Model: 817-947-M&W
 Source / Verifier: 16955B / 2ci
 Master Calibration Performed: Sun Jul 15 05:36:52 2018

Master Calibration

	Density		Far Detector	Near Detector	
Magnesium	1.755	g/cc	6127.15	5922.31	cps
Aluminum	2.670	g/cc	1141.85	3762.09	cps
Spine Angle = 74.89			Density/Spine Ratio = 0.526		
	Size		Reading		
Small Ring	4.50	in	1.02		
Large Ring	15.00	in	1.15		

Compensated Neutron Calibration Report

Serial Number: 207-MW
 Tool Model: M&W
 Calibration Performed: SUN JUL 15 10:30:30 2018

Detector	Readings	Target	Normalization
Short Space	6240.00 cps	1000.00 cps	1.6025
Long Space	460.00 cps	1000.00 cps	1.9500

Gamma Ray Calibration Report

Serial Number:	00	
Tool Model:	M&W	
Calibration Performed:	Sun Jul 15 05:37:08 2018	
Calibrator Value:	1.0	GAPI
Background Reading:	0.0	cps
Calibrator Reading:	1.0	cps
Sensitivity:	0.6000	GAPI/cps



PIONEER

Pioneer Energy Services

Company	VAL ENERGY, INC.
Well	WRIGHT FARMS #1-2
Field	UNKNOWN
County	SHERMAN
State	KANSAS