



DUAL INDUCTION LOG

Company VAL ENERGY, INC.
Well WRIGHT FARMS #1-2
Field UNKNOWN
County SHERMAN **State** KANSAS

Company VAL ENERGY, INC.
Well WRIGHT FARMS #1-2
Field UNKNOWN
County SHERMAN
State KANSAS

Location: API #: 15-181-20614-00-00
 1372' FNL & 1204' FEL
 SEC 2 TWP 8S RGE 37W
 Permanent Datum GROUND LEVEL Elevation 3452'
 Log Measured From KELLY BUSHING
 Drilling Measured From KELLY BUSHING
 Other Services: CNL/CDL MEL/BHCS
 Elevation: K.B. 3457', D.F. N/A, G.L. 3452'

Date	7/15/2018
Run Number	ONE
Depth Driller	5000'
Depth Logger	4999'
Bottom Logged Interval	4998'
Top Log Interval	300'
Casing Driller	8.625" @ 345'
Casing Logger	345'
Bit Size	7.875"
Type Fluid in Hole	CHEMICAL
Salinity, ppm CL	9200
Density / Viscosity	9.3 63
pH / Fluid Loss	9.0 11.6
Source of Sample	FLOWLINE
Rm @ Meas. Temp	0.40 @ 80
Rmt @ Meas. Temp	0.30 @ 80
Rmc @ Meas. Temp	0.54 @ 80
Source of Rmf / Rmc	CHARTS
Rm @ BHT	0.25 @ 126
Operating Rig Time	5 HOURS
Max Rec. Temp. F	126
Equipment Number	91
Location	HAYS
Recorded By	D. SCHMIDT
Witnessed By	TIM PRIEST

<<< Fold Here >>>

All interpretations are opinions based on inferences from electrical or other measurements and Pioneer Wireline Services, LLC cannot and does not guarantee the accuracy or correctness of any interpretation, and Pioneer Wireline Services, LLC will not be liable or responsible for any loss, costs, damages, or expenses incurred or sustained by anyone resulting from any interpretation made by any of our officers, agents or employees.

Comments

N/A DENOTES NOT AVAILABLE OR NON-APPLICABLE.

BREWSTER,
2 NORTH, 2 WEST,
SOUTH INTO






Log Measured From: KELLY BUSHING 5 Ft. Above Permanent Datum

THANK YOU FOR USING PIONEER ENERGY SERVICES
www.pioneerenergy.com 785-625-3858

Your Pioneer Energy Services Crew Engineer: D. SCHMIDT Operator: Operator: Operator:	This Log Record Was Witnessed By Primary Witness: TIM PRIEST Secondary Witness: Secondary Witness: Secondary Witness:
---	--

Top - Bottom

M	A	SZCOR	NPORSEL	FLUIDDEN g/cc	MATRXDEN g/cc	SPSHIFT mV	SNDERRM mmho/m
2	1	Off	Limestone	1	2.71	-265	0
SNDERR mmho/m	SRFTEMP degF	CASETHCK in	CASEOD in	PERFS	TDEPTH ft	BOTTEMP degF	BOREID in
0	80	0	5.5	0	4999	126	7.875

Sensor	Offset (ft)	Schematic	Description	Length (ft)	O.D. (in)	Weight (lb)
GR	40.58		GR-M&W (89)	3.00	3.50	50.00
CNLSC CNSSC	37.48 36.73		CNT-M&W (207-MW)	5.50	3.50	100.00
LSD DCAL SSD	28.43 28.42 27.93		CDL-M&W (817-947)	8.50	4.00	250.00
MCAL MI MN	19.83 19.83 19.83		ML-PSIML (PSI-01) GO Micro log tools converted to Simplec electronics	7.58	4.00	65.00
RLL3F RLL3	15.80 15.80					

CILD 8.00

CILM 4.70

SP 0.20

DIL-PSI HIGH TEMP (933 (HT))

18.50

3.50

220.00

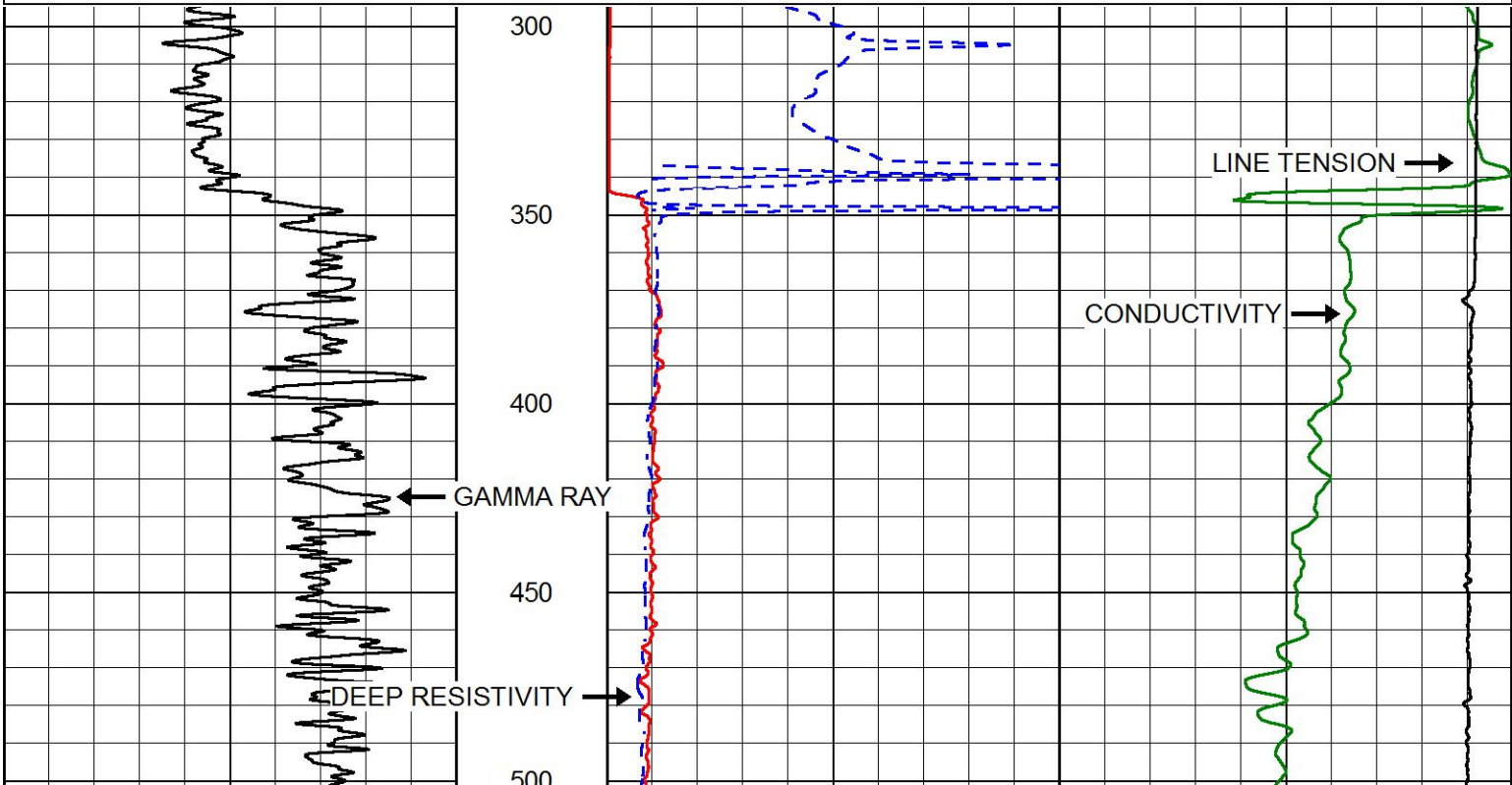
Dataset: val_wrih farms 1-2.db: field/well/STKML/pass3.4
 Total length: 43.08 ft
 Total weight: 685.00 lb
 O.D.: 4.00 in

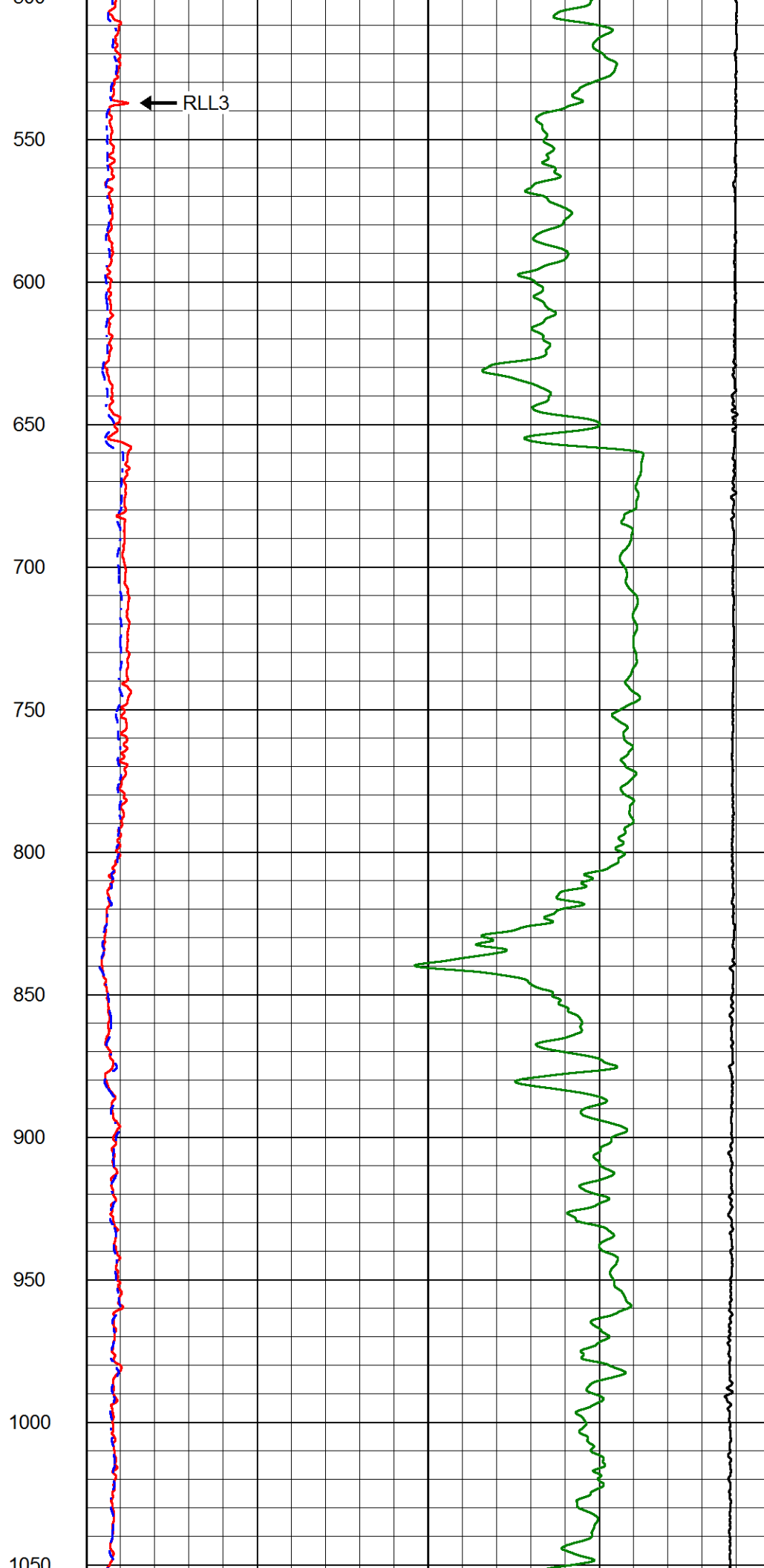
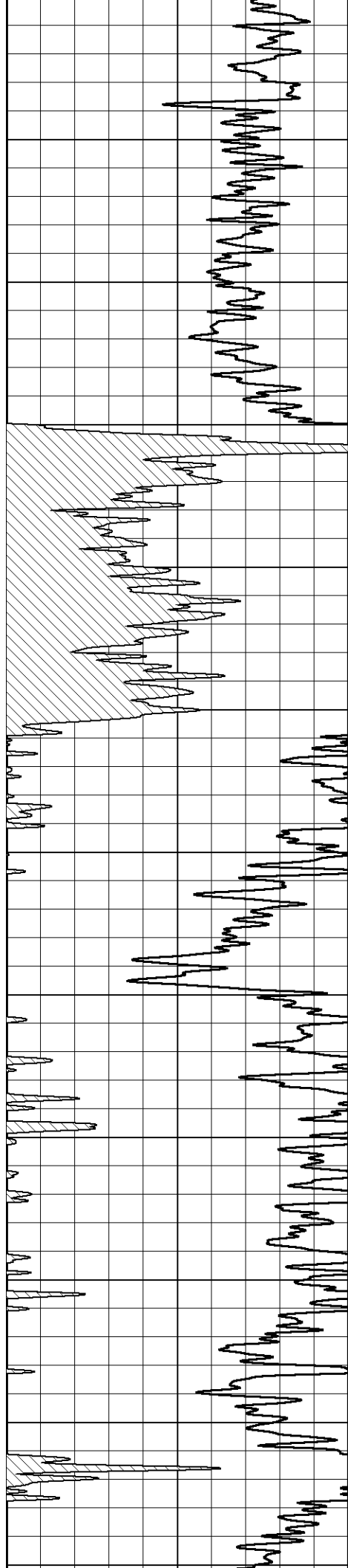


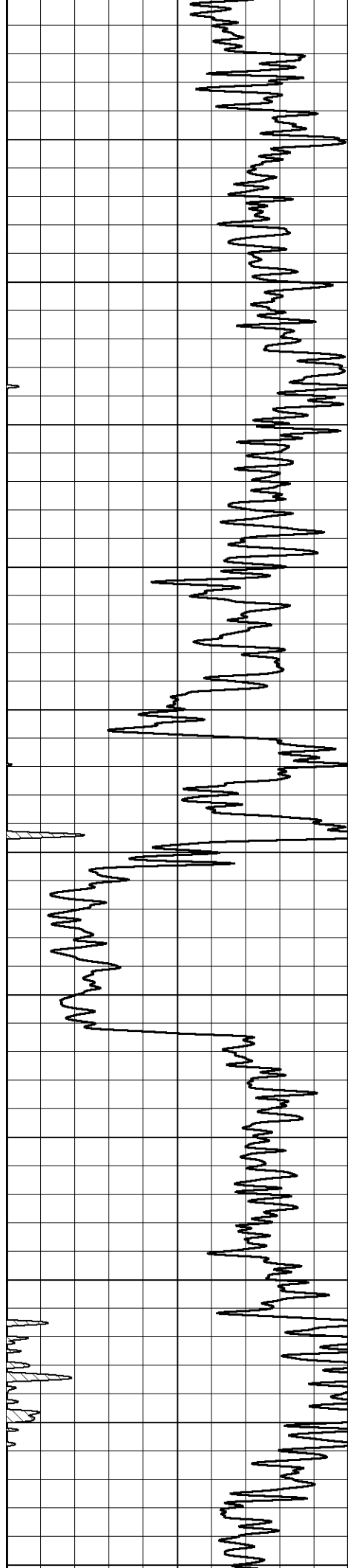
MAIN PASS

Database File val_wrih farms 1-2.db
 Dataset Pathname STKML/pass4.1
 Presentation Format dil2in
 Dataset Creation Sun Jul 15 22:53:55 2018
 Charted by Depth in Feet scaled 1:600

GAMMA RAY (GAPI)	1000	CONDUCTIVITY (mmho/m)	0
	15000	Line Tension (lb)	0
	0	RLL3 (Ohm-m)	50
	0	DEEP RESISTIVITY (Ohm-m)	50
	50	RLL3 (Ohm-m)	500
	50	Deep Resistivity (Ohm-m)	500



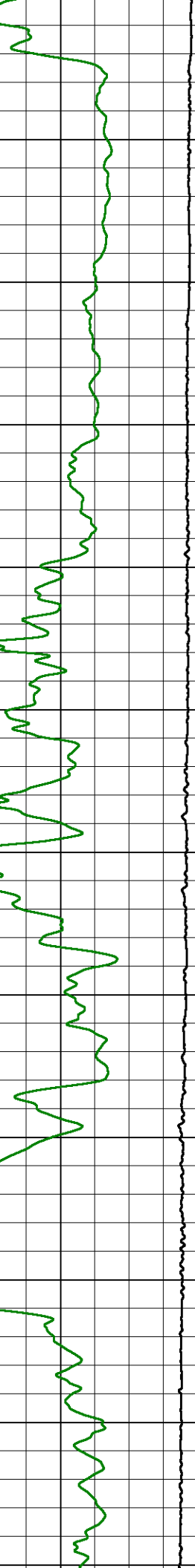
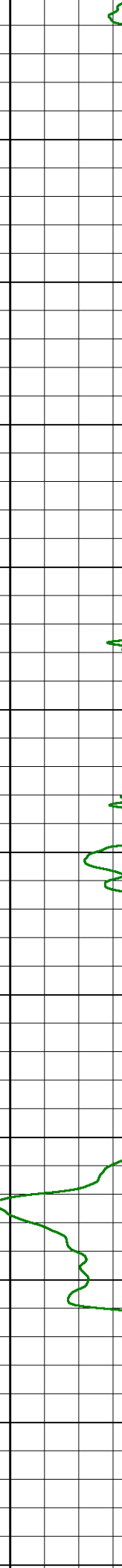




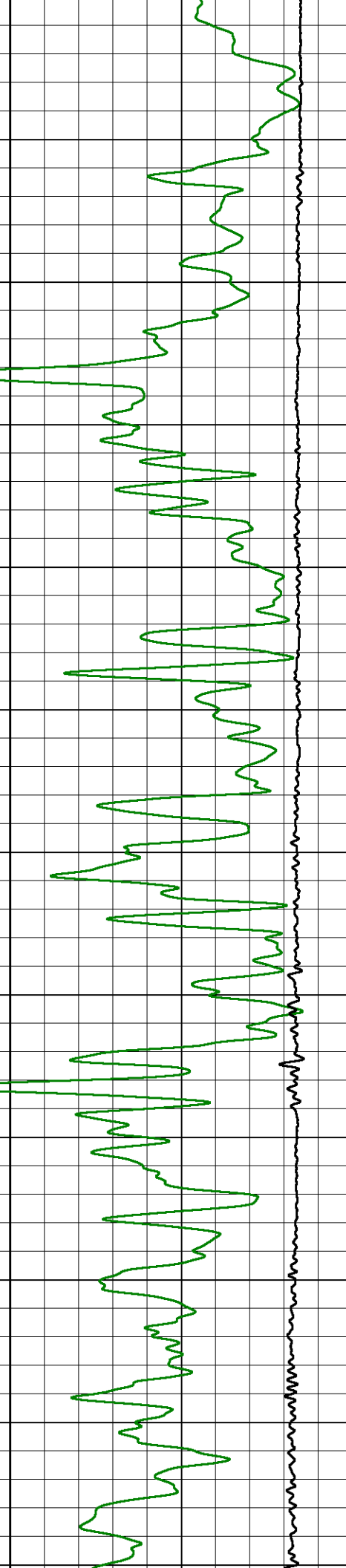
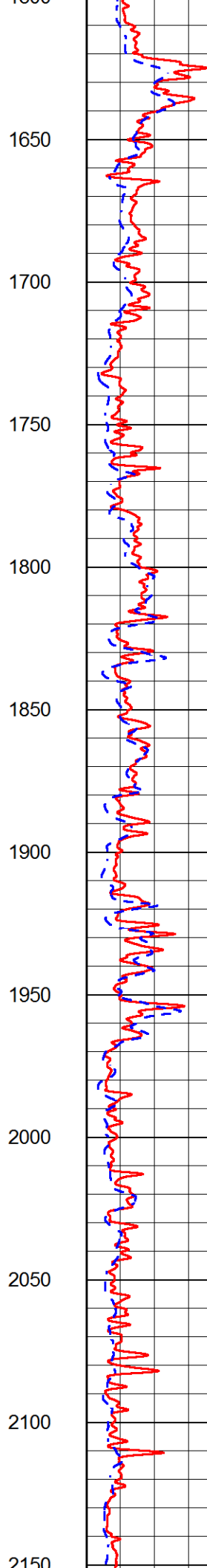
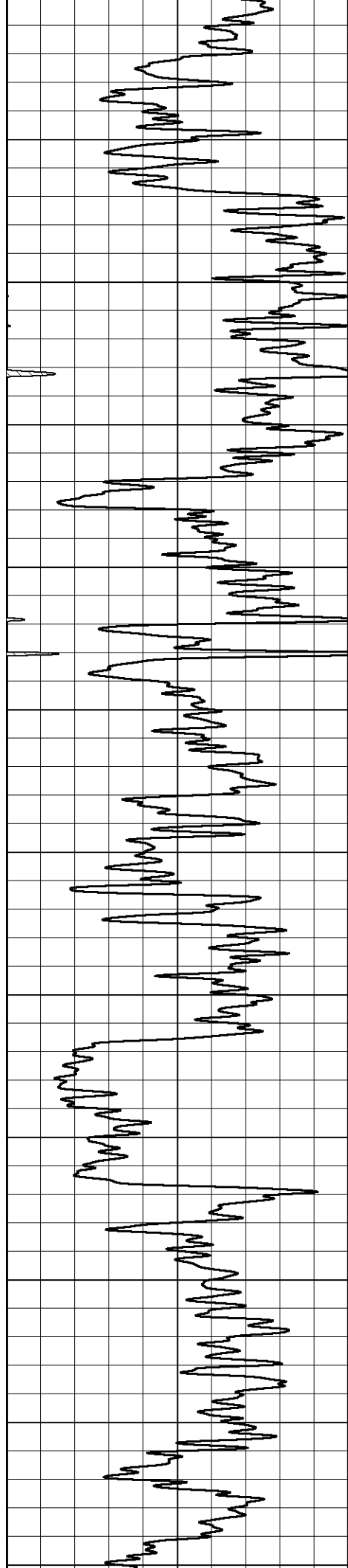
1050
1100
1150
1200
1250
1300
1350
1400
1450
1500
1550
1600

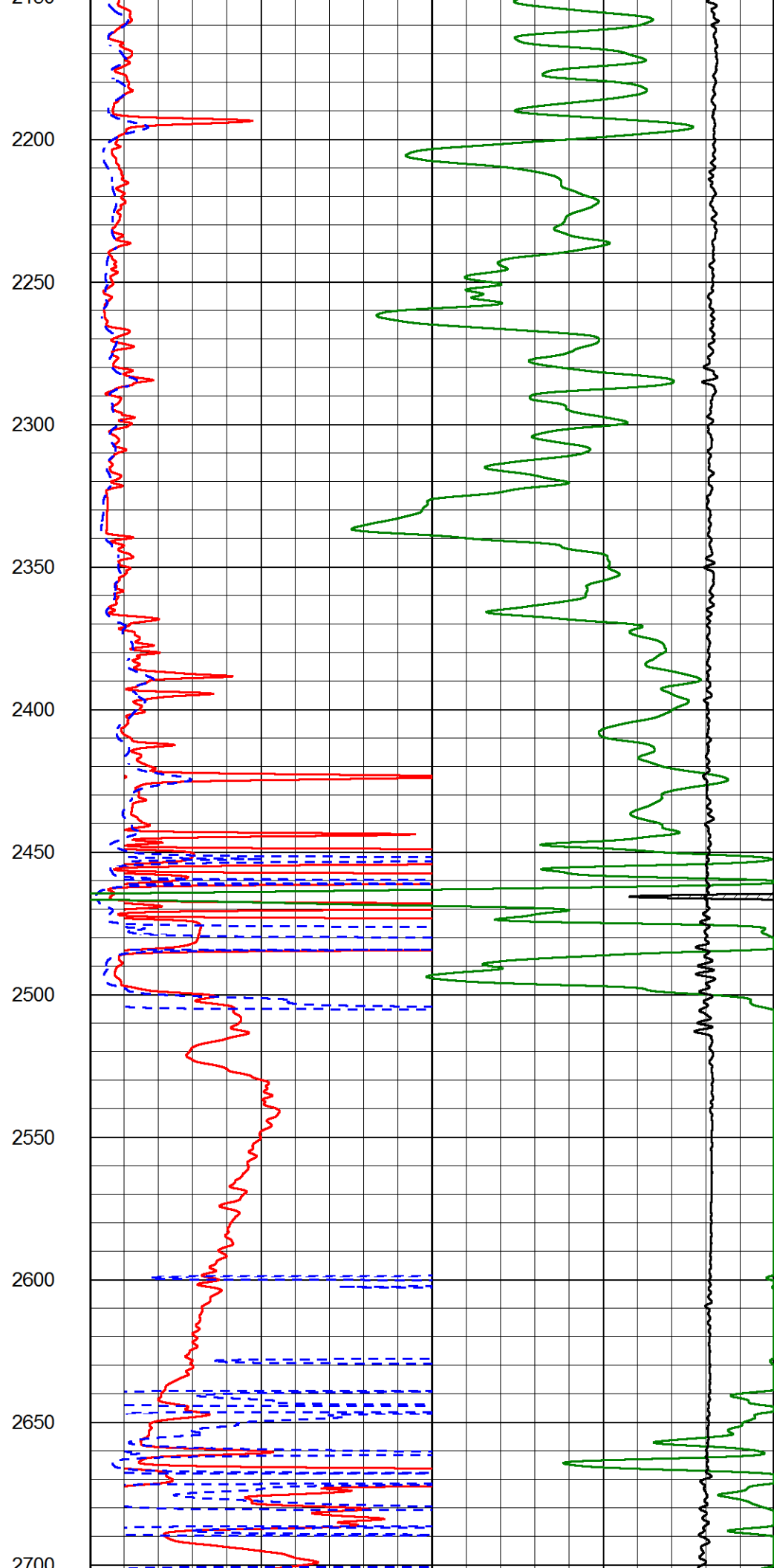
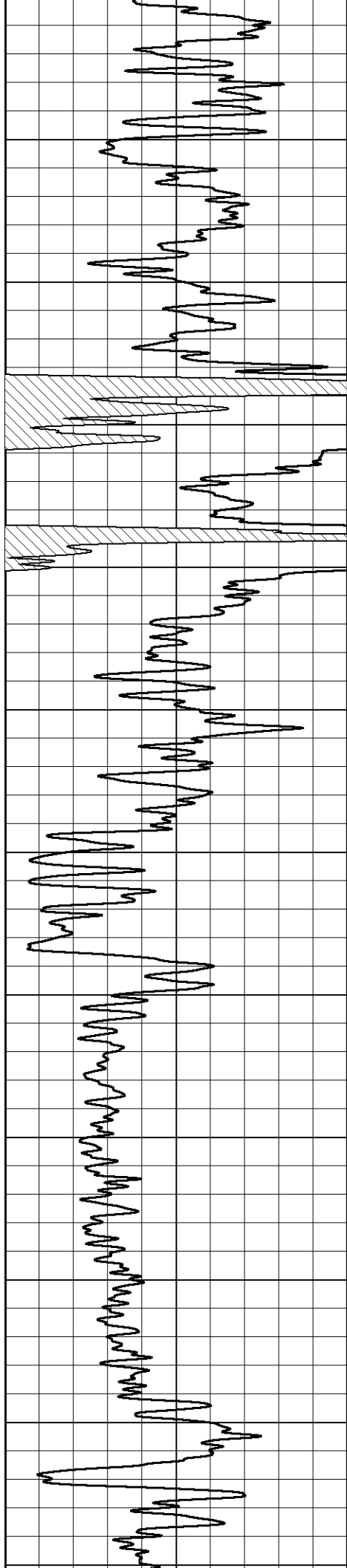


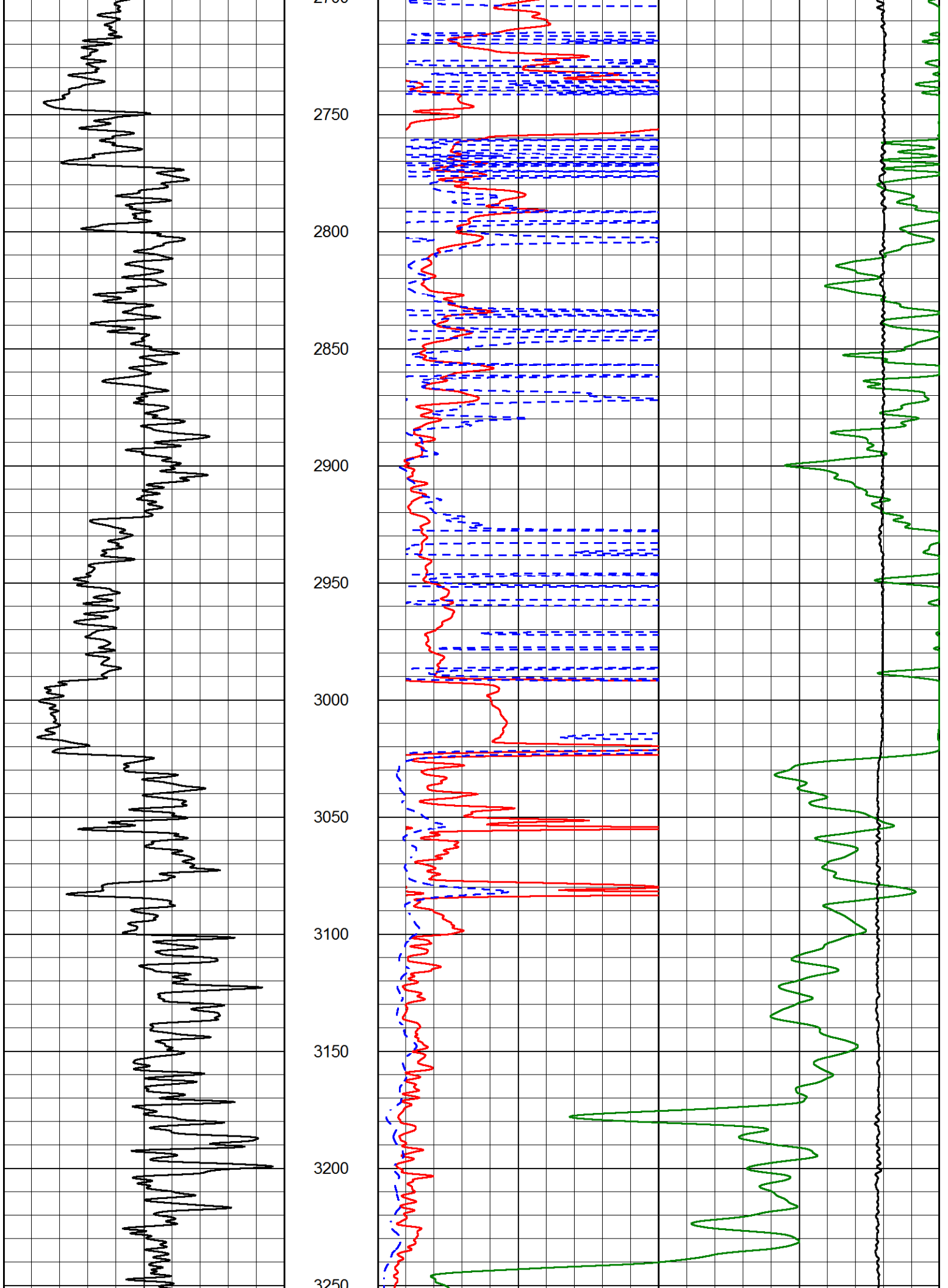
1050
1100
1150
1200
1250
1300
1350
1400
1450
1500
1550
1600

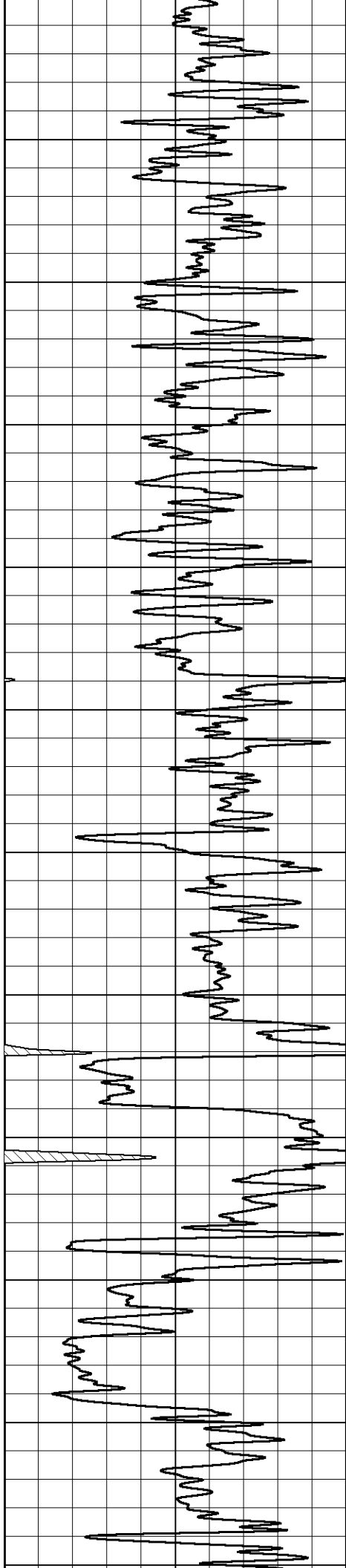


1050
1100
1150
1200
1250
1300
1350
1400
1450
1500
1550
1600

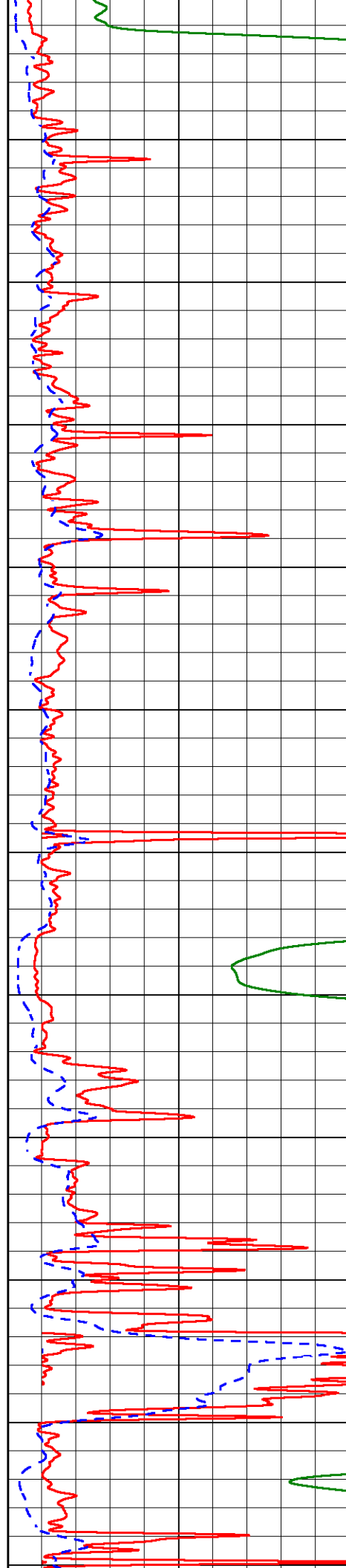


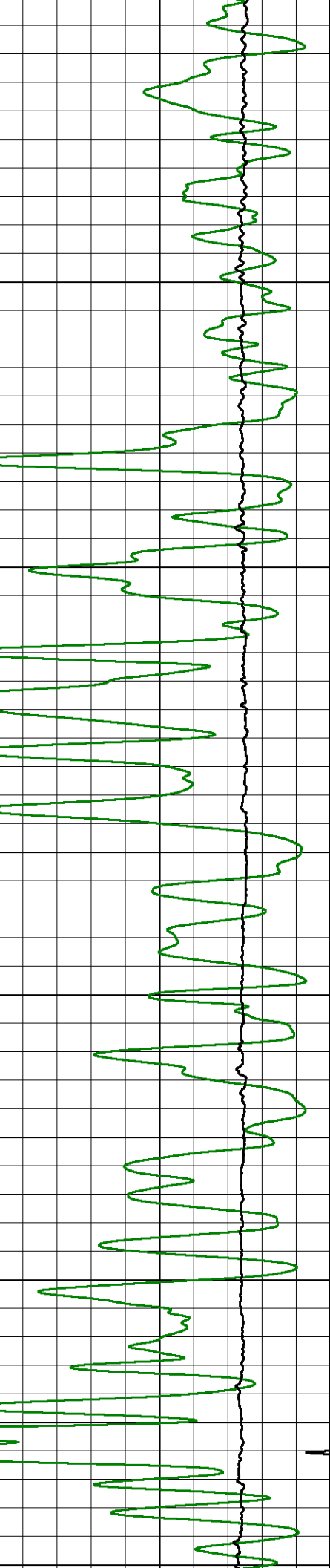
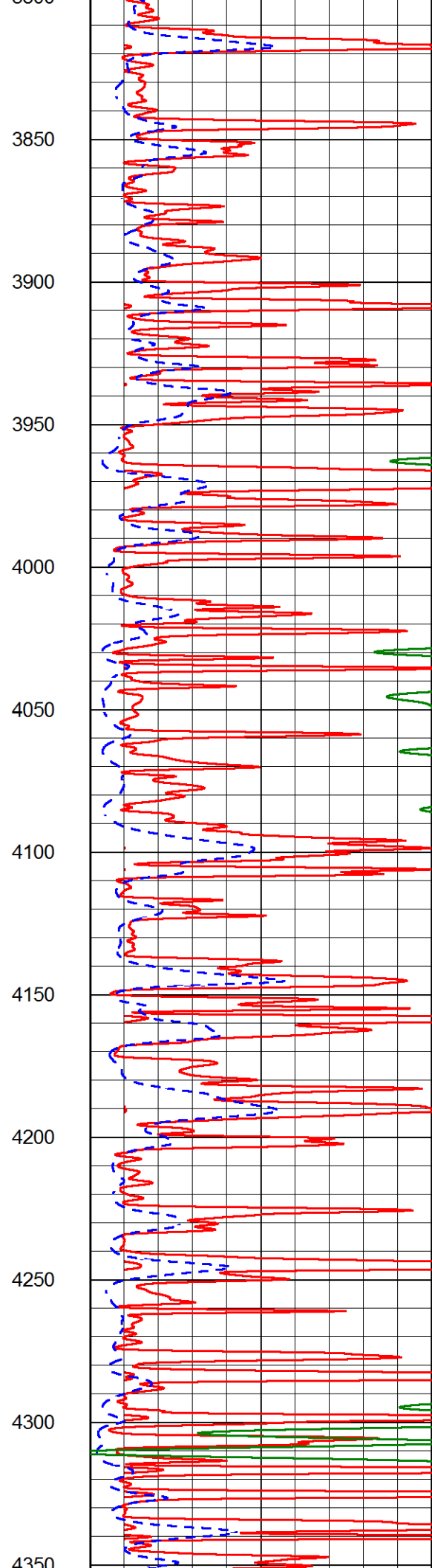
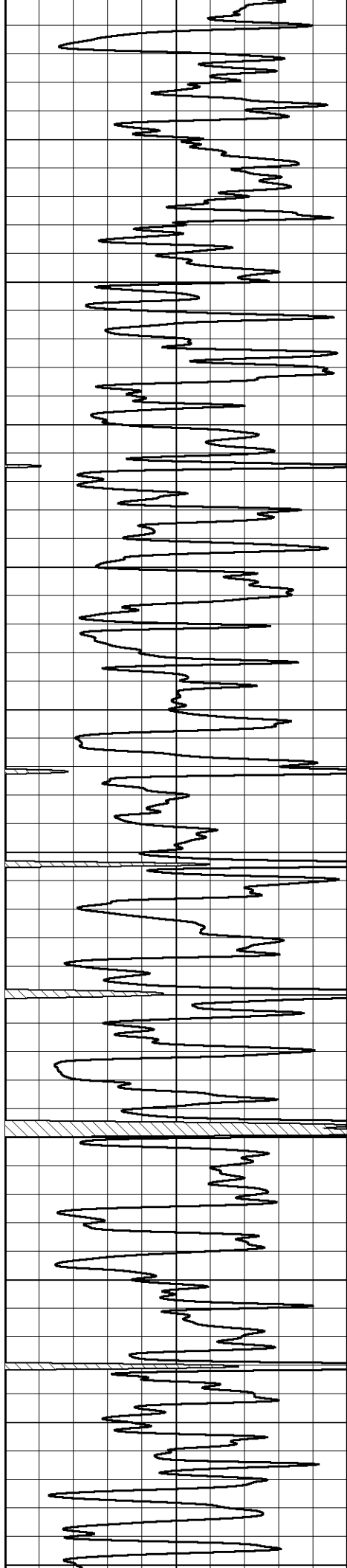


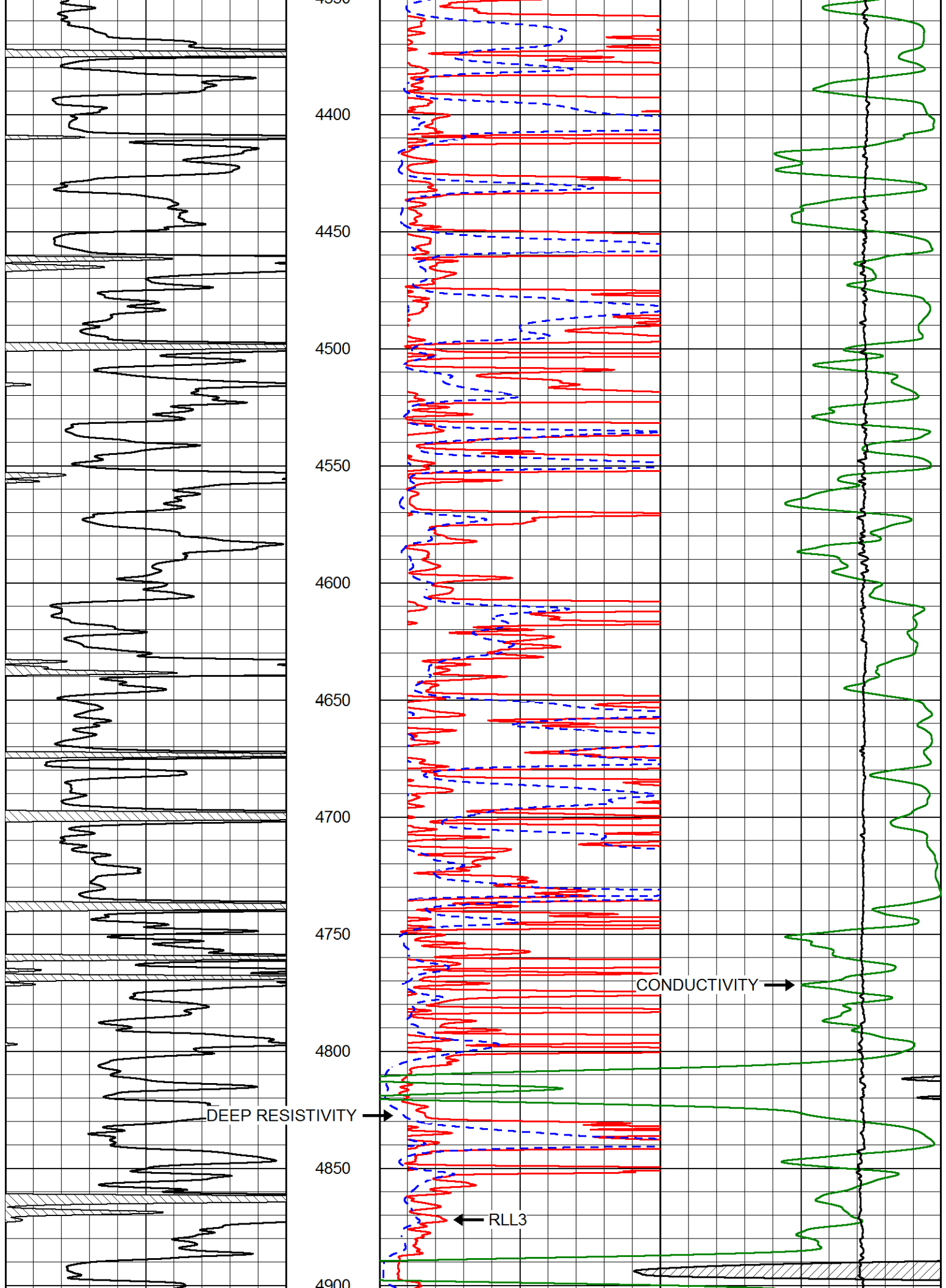


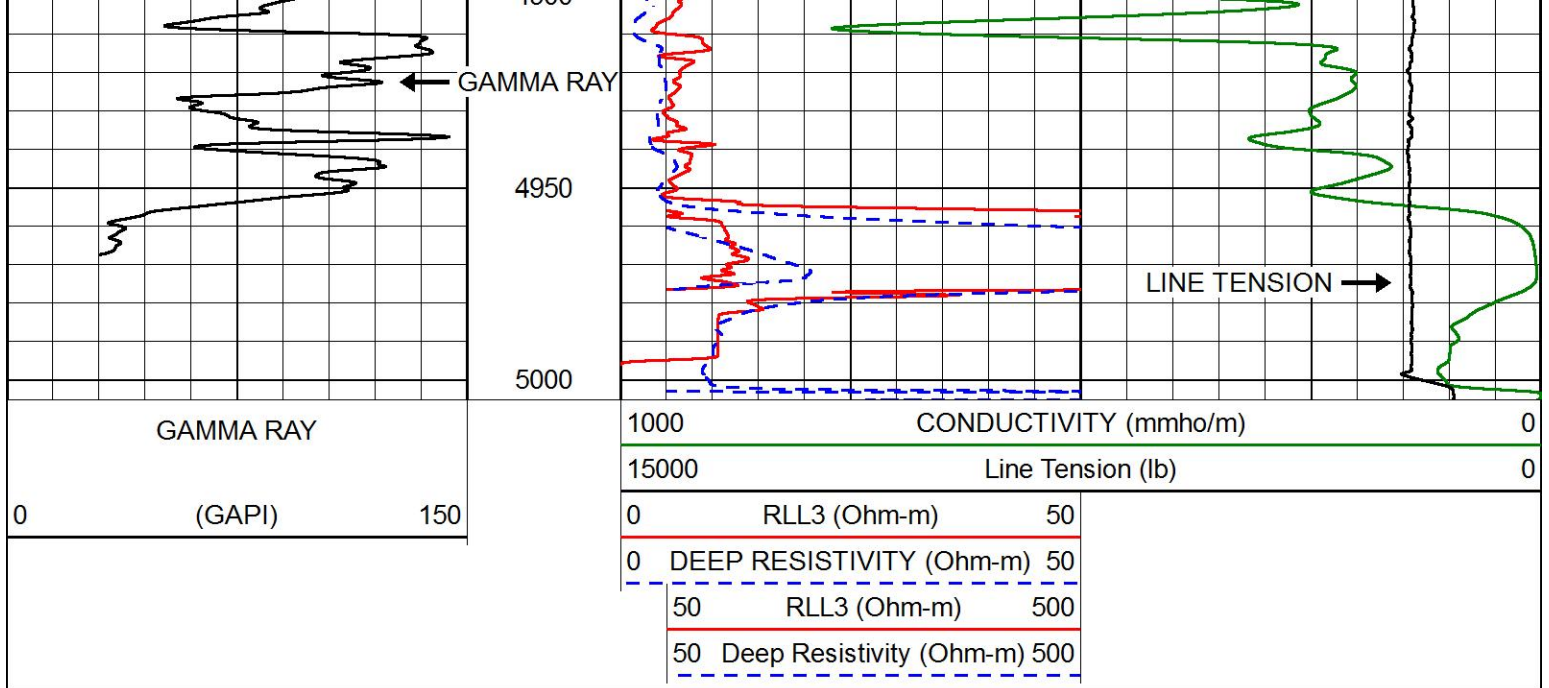


3200
3300
3350
3400
3450
3500
3550
3600
3650
3700
3750
3800





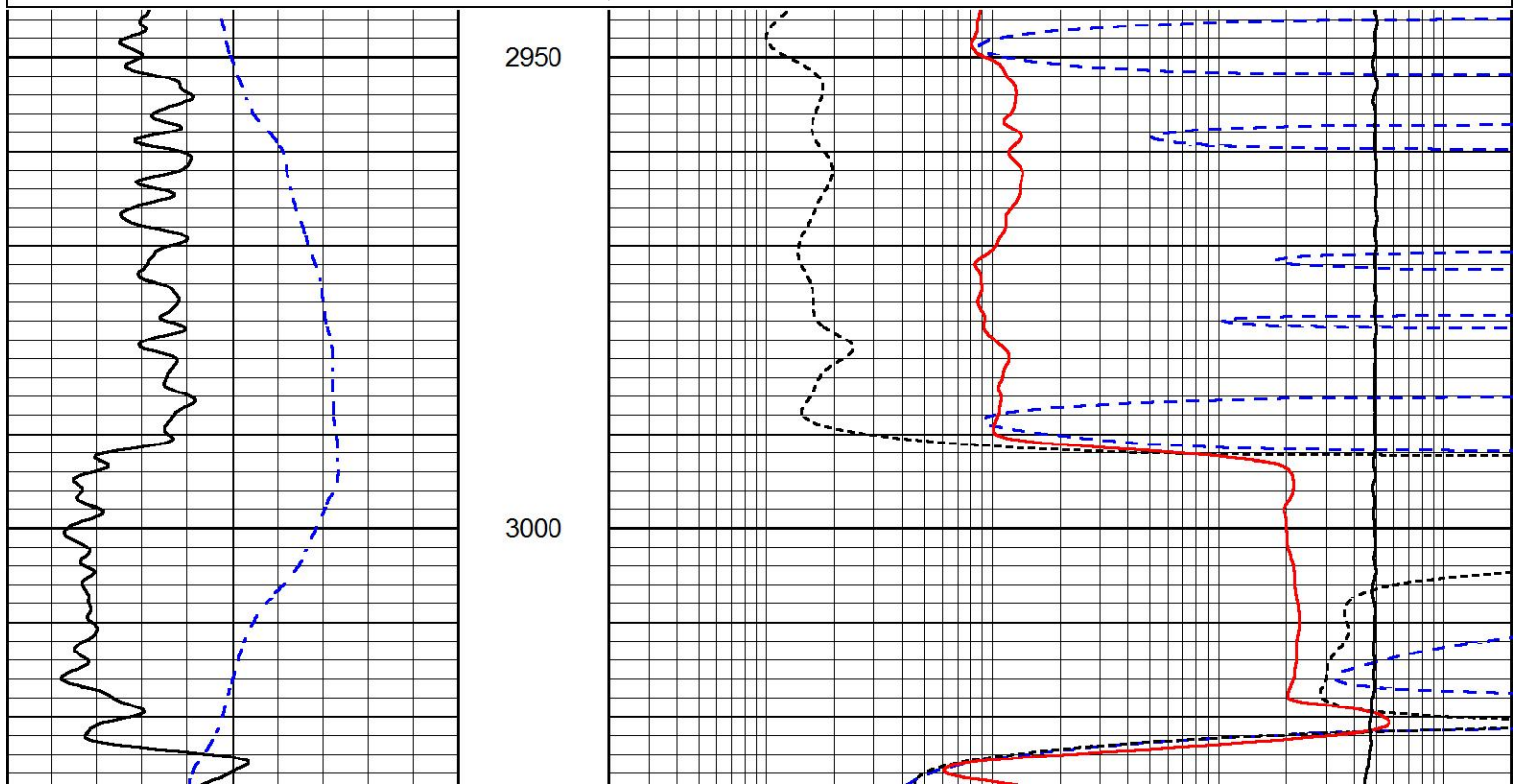


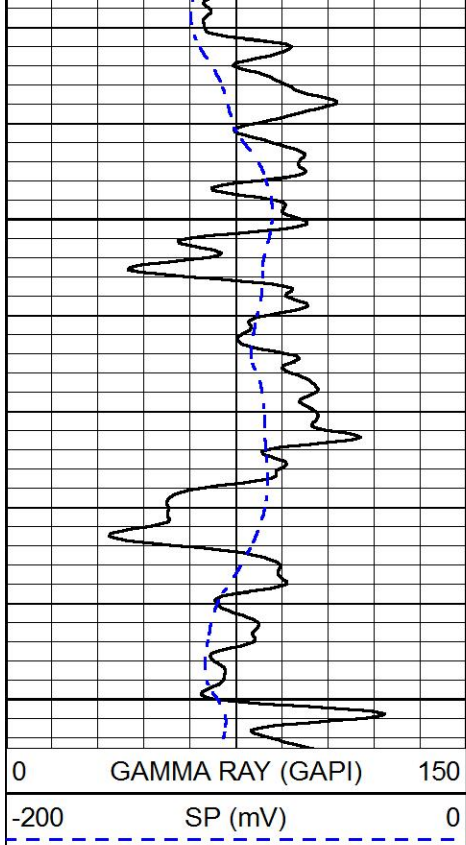



MAIN PASS

Database File: val_wright farms 1-2.db
 Dataset Pathname: STKML/pass4.1
 Presentation Format: dil
 Dataset Creation: Sun Jul 15 22:53:55 2018
 Charted by: Depth in Feet scaled 1:240

0	GAMMA RAY (GAPI)	150	0.2	DEEP RESISTIVITY (Ohm-m)	2000
-200	SP (mV)	0	0.2	MEDIUM RESISTIVITY (Ohm-m)	2000
			0.2	RLL3 (Ohm-m)	2000
			10000	LINE TENSION (lb)	0

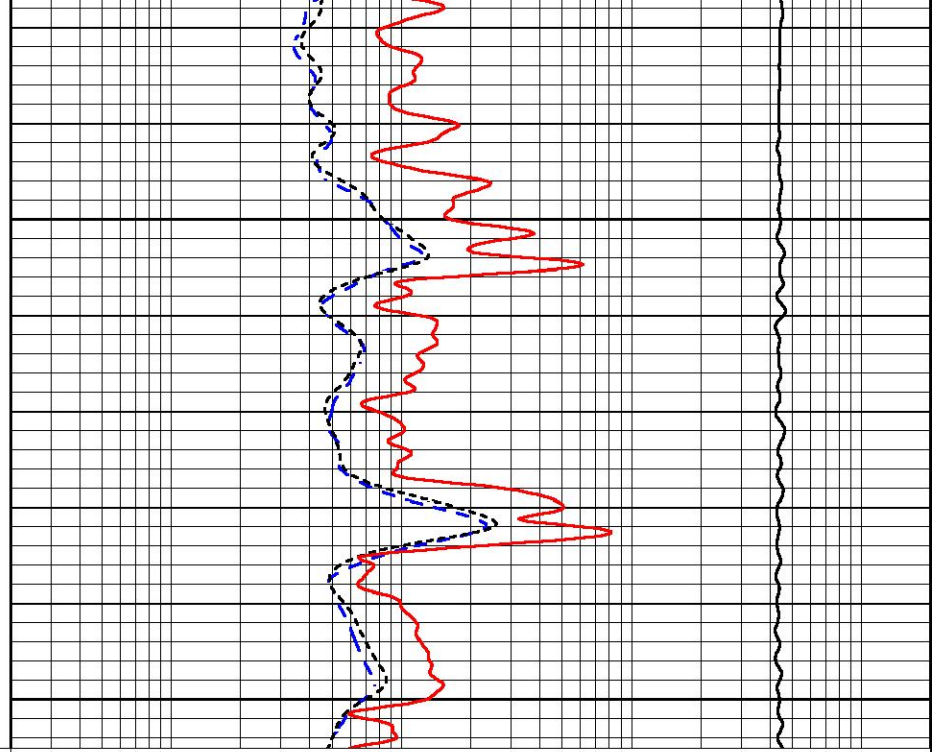




3050

3100

0 GAMMA RAY (GAPI) 150
 -200 SP (mV) 0



0.2 DEEP RESISTIVITY (Ohm-m) 2000
 0.2 MEDIUM RESISTIVITY (Ohm-m) 2000
 0.2 RLL3 (Ohm-m) 2000
 10000 LINE TENSION (lb) 0

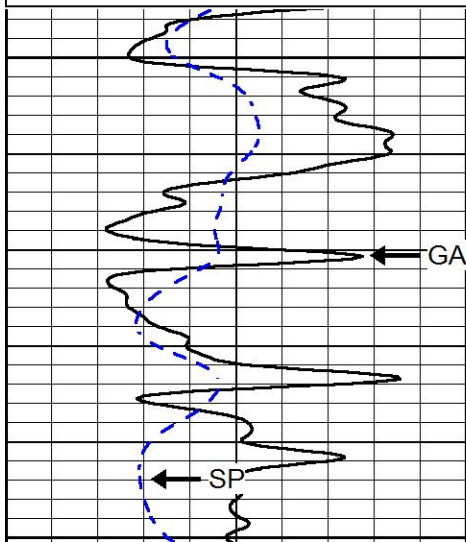


MAIN PASS

Database File val_wright farms 1-2.db
 Dataset Pathname STKML/pass3.1
 Presentation Format dil
 Dataset Creation Sun Jul 15 22:09:11 2018
 Charted by Depth in Feet scaled 1:240

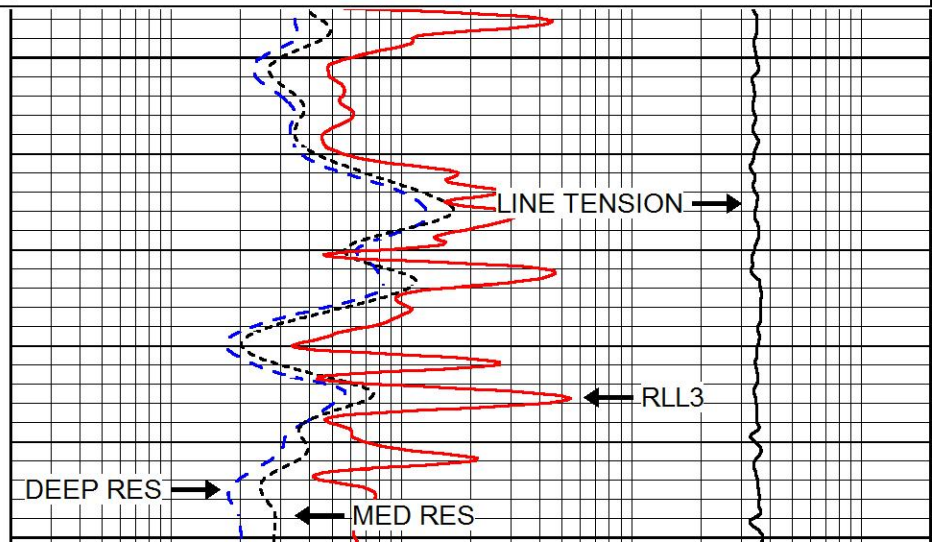
0 GAMMA RAY (GAPI) 150
 -200 SP (mV) 0

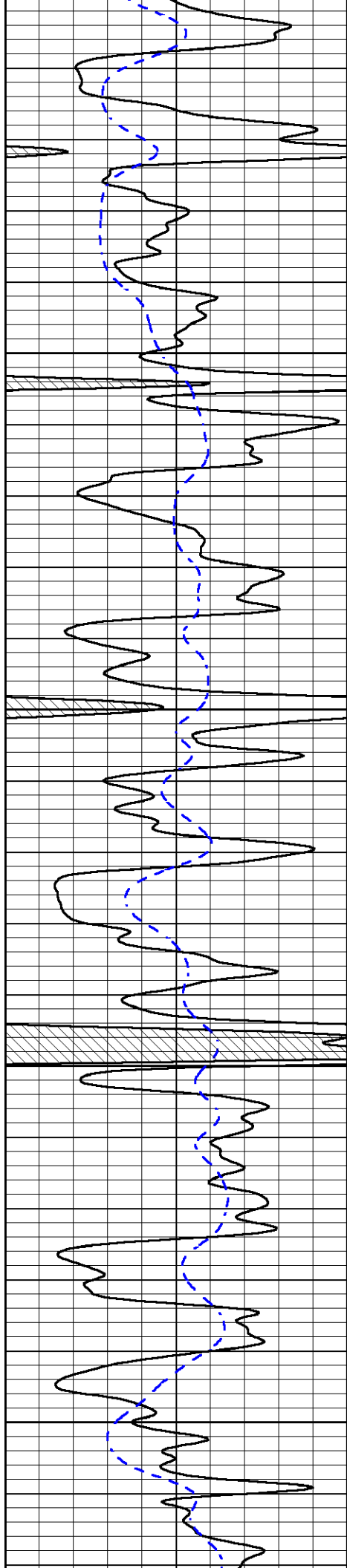
0.2 DEEP RESISTIVITY (Ohm-m) 2000
 0.2 MEDIUM RESISTIVITY (Ohm-m) 2000
 0.2 RLL3 (Ohm-m) 2000
 10000 LINE TENSION (lb) 0



4000

4050



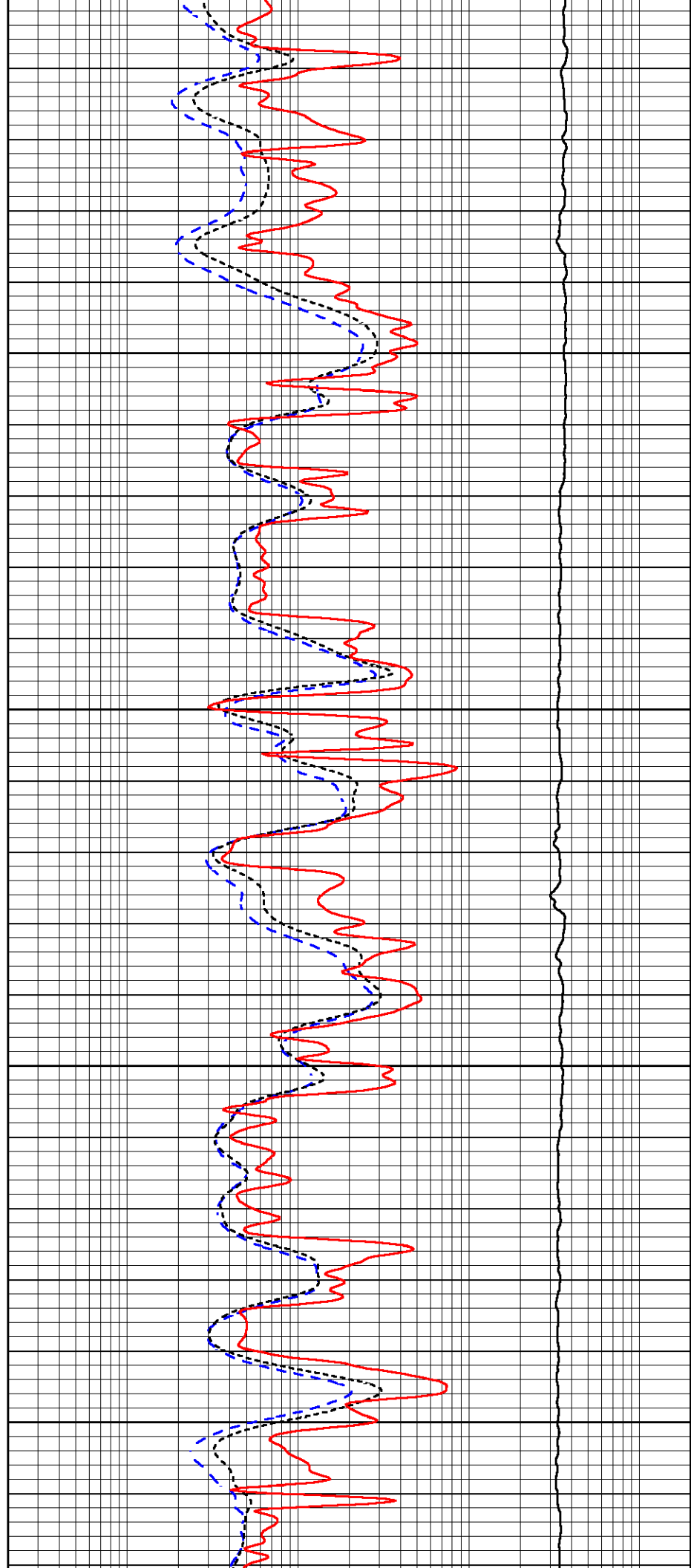


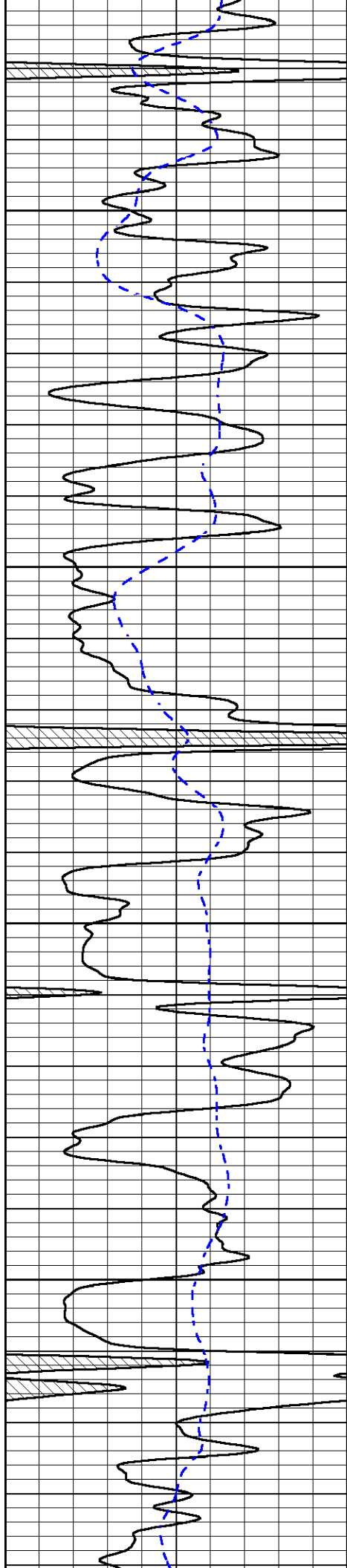
4100

4150

4200

4250



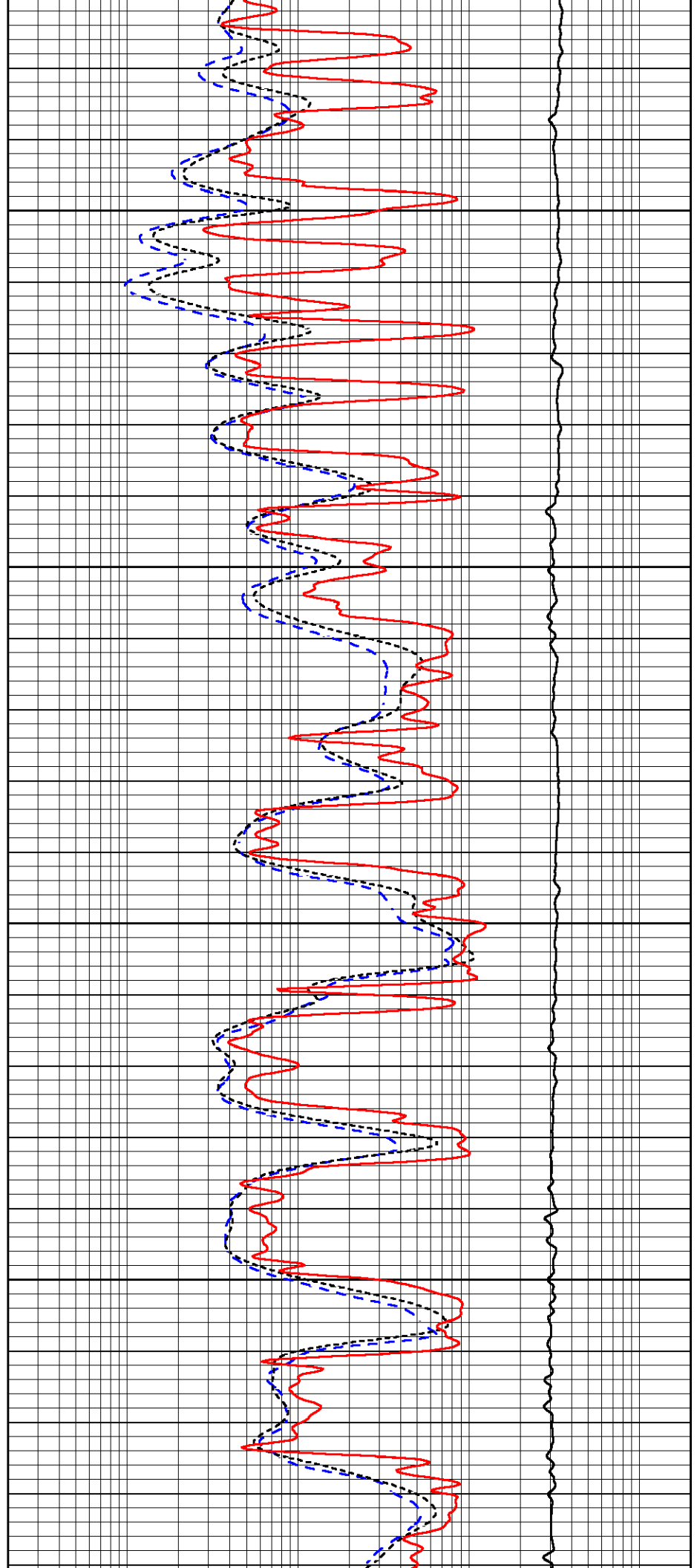


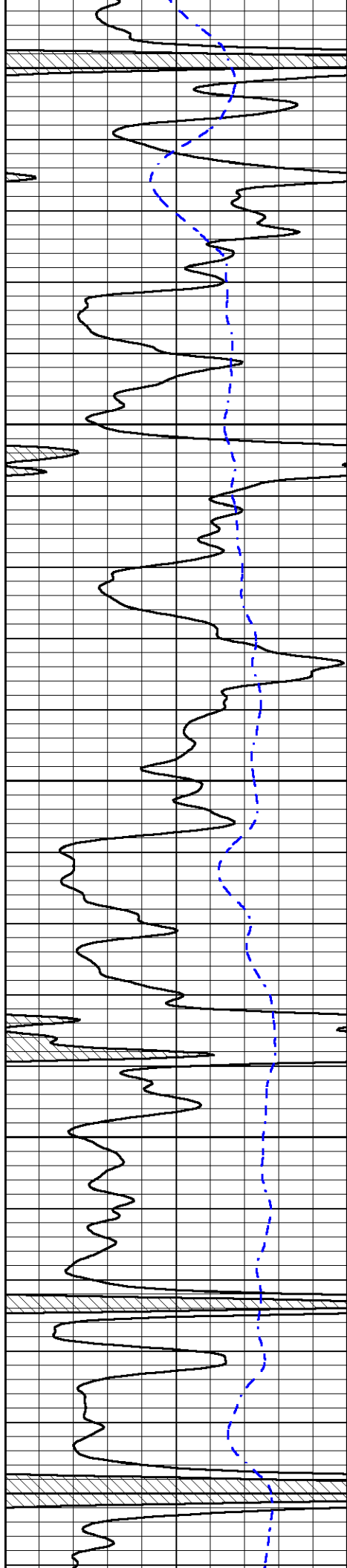
4300

4350

4400

4450





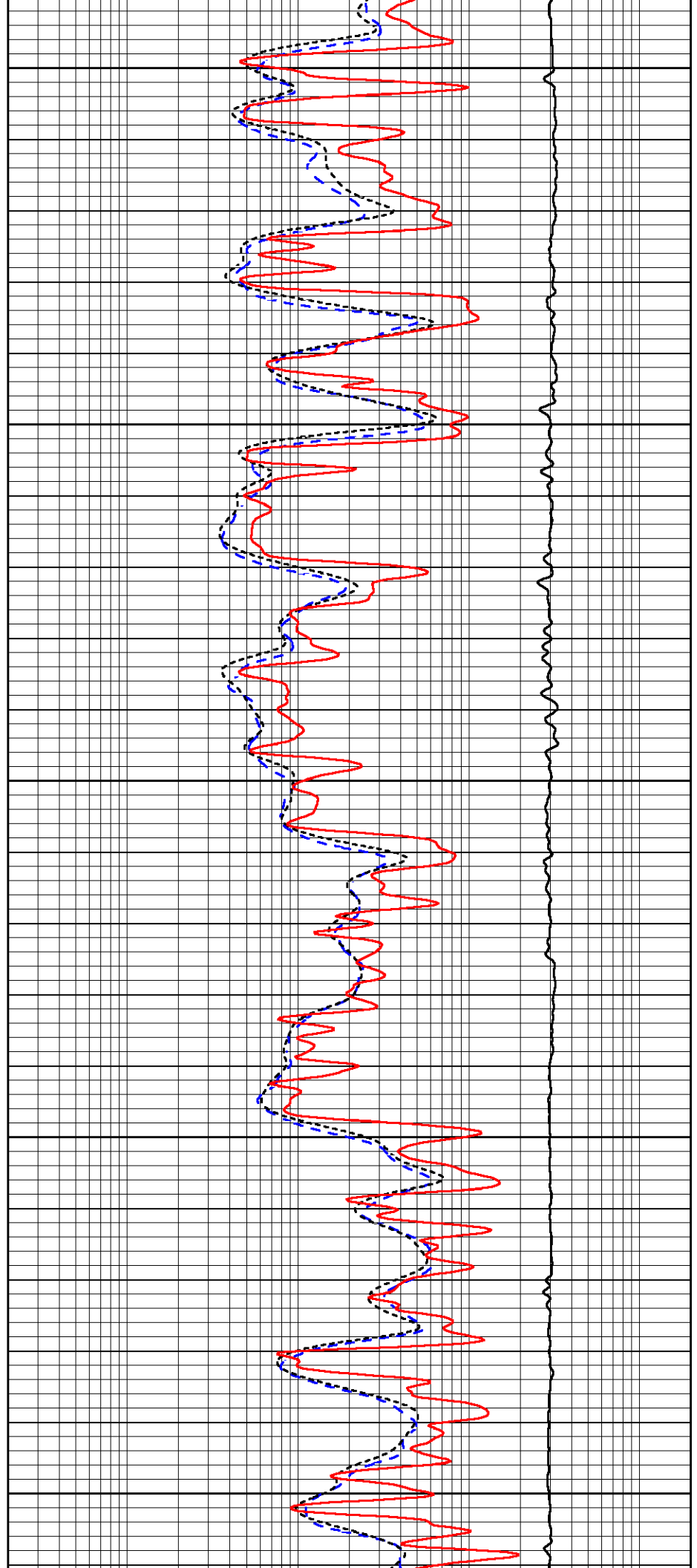
4500

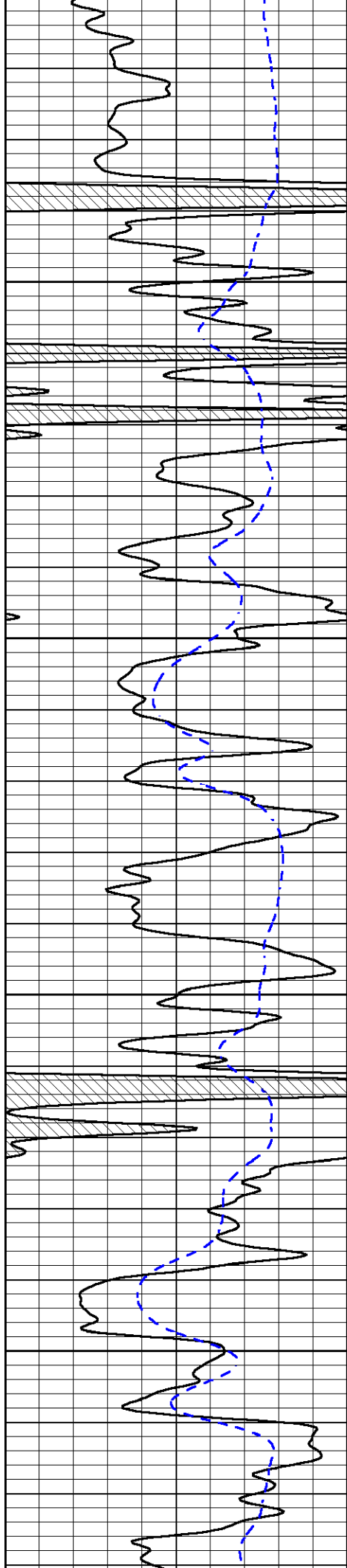
4550

4600

4650

4700



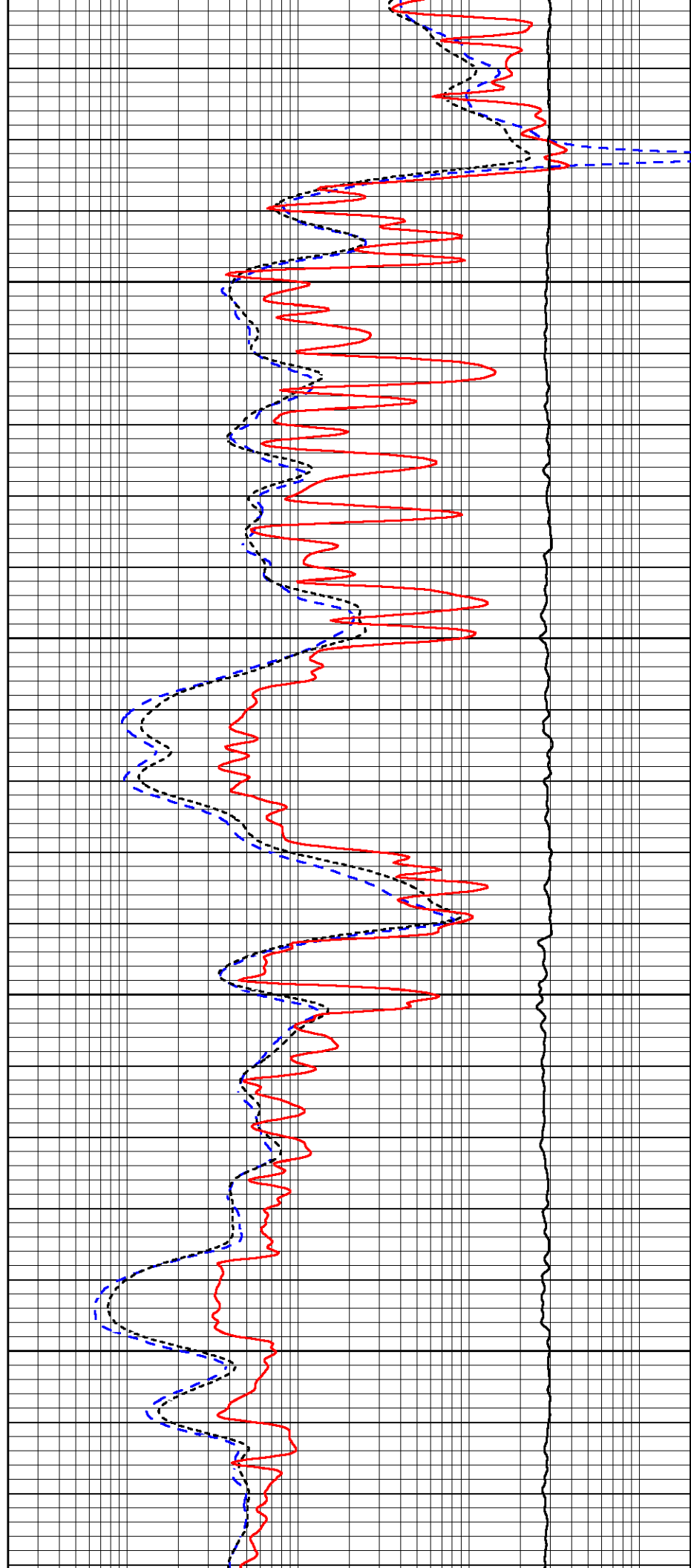


4750

4800

4850

4900

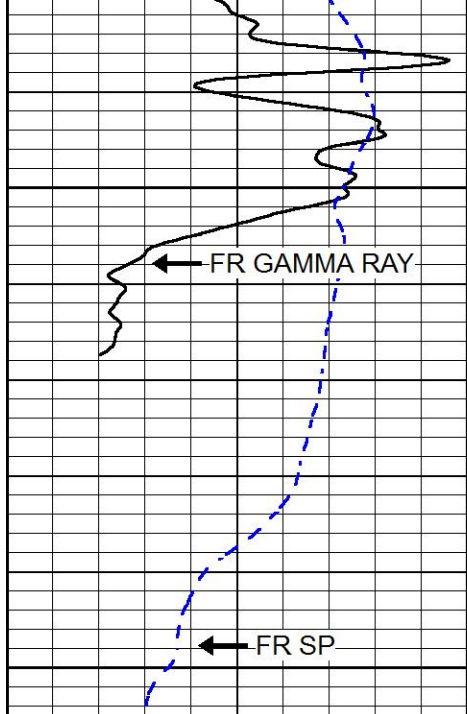


4750

4800

4850

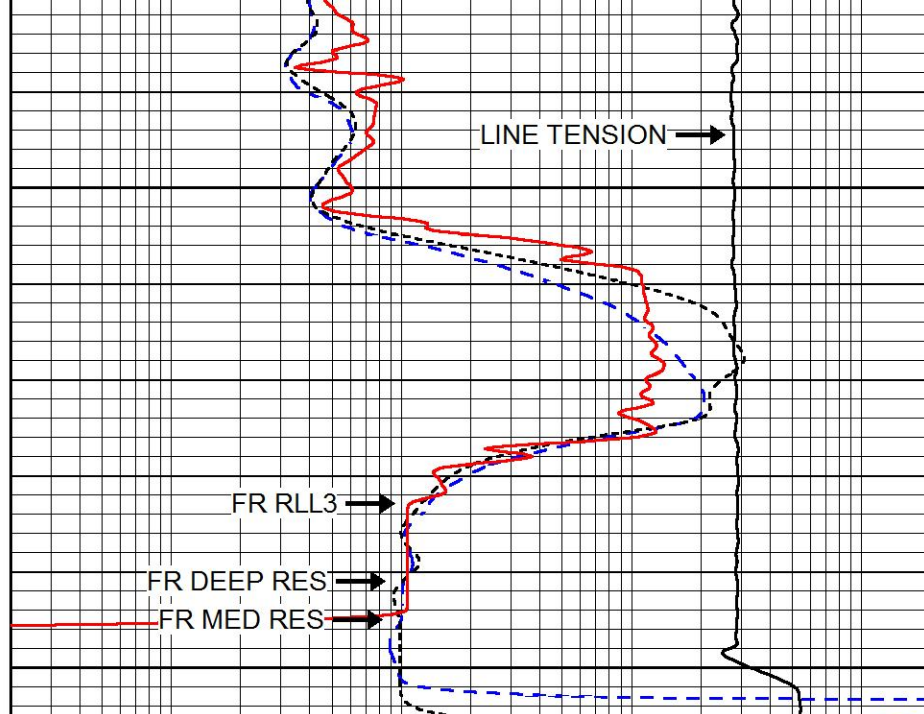
4900



0	GAMMA RAY (GAPI)	150
-200	SP (mV)	0

4950

5000



0.2	DEEP RESISTIVITY (Ohm-m)	2000
0.2	MEDIUM RESISTIVITY (Ohm-m)	2000
0.2	RLL3 (Ohm-m)	2000
10000	LINE TENSION (lb)	0

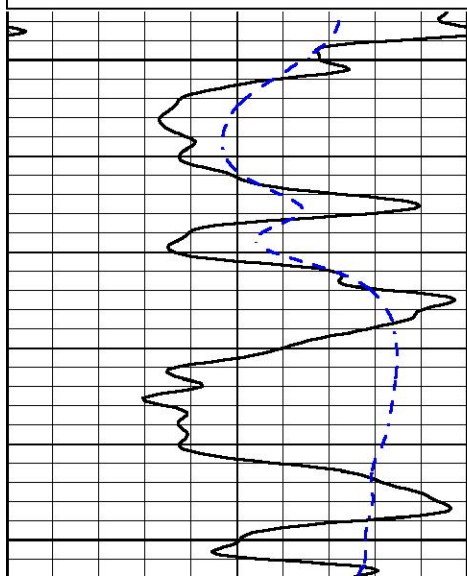


REPEAT SECTION

Database File val_wright farms 1-2.db
 Dataset Pathname STKML/pass2.1
 Presentation Format dil
 Dataset Creation Sun Jul 15 21:59:27 2018
 Charted by Depth in Feet scaled 1:240

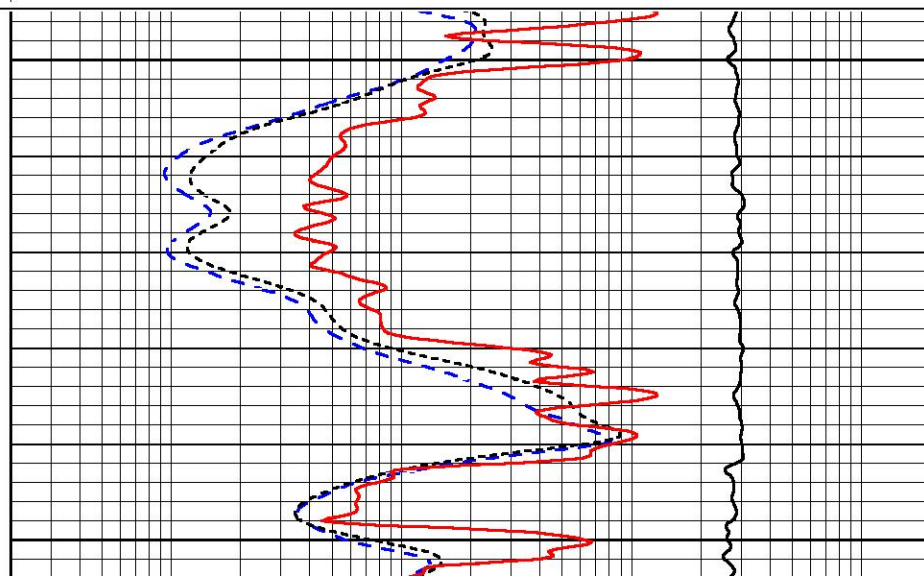
0	GAMMA RAY (GAPI)	150
-200	SP (mV)	0

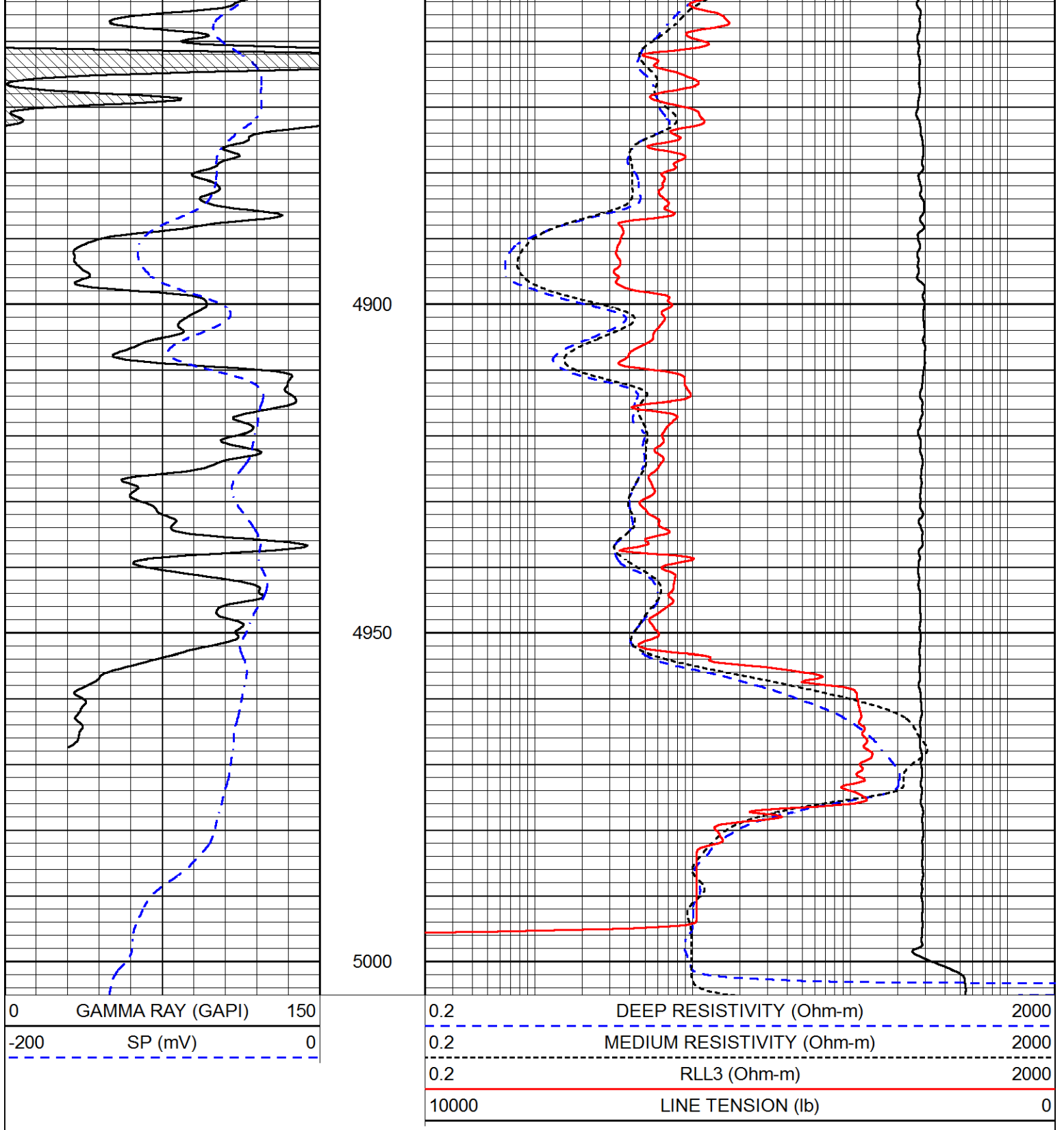
0.2	DEEP RESISTIVITY (Ohm-m)	2000
0.2	MEDIUM RESISTIVITY (Ohm-m)	2000
0.2	RLL3 (Ohm-m)	2000
10000	LINE TENSION (lb)	0



4800

4850





Calibration Report

Database File val_wrigh farms 1-2.db
 Dataset Pathname STKML/pass3.1
 Dataset Creation Sun Jul 15 22:09:11 2018

Dual Induction Calibration Report

Serial-Model: 933 (HT)-PSI HIGH TEMP
 Calibration Performed: Sun Jul 15 05:36:29 2018

Readings

References

Results

Loop:	Air	Loop	Air	Loop		Gain	Offset
Deep	167.000	835.000	0.000	255.000	mmho/m	0.700	-17.000
Medium	142.000	1349.000	0.000	255.000	mmho/m	0.565	-60.500

Microlog Calibration Report

Serial-Model: PSI-01-PSIML
 Performed: Sun Jul 15 07:40:28 2018

	Readings		References			Results	
	Zero	Cal	Zero	Cal		m	b
Normal	0.0000	1.0000	0.0000	1.0000	Ohm-m	60000.0000	-1.5000
Inverse	0.0000	1.0000	0.0000	1.0000	Ohm-m	62000.0000	-0.7000
Caliper	1.0001	1.1397	6.5000	18.5000	in	70.0000	-66.2500

Compensated Density Calibration Report

Serial-Model: 817-947-M&W
 Source / Verifier: 16955B / 2ci
 Master Calibration Performed: Sun Jul 15 05:36:52 2018

Master Calibration

	Density		Far Detector	Near Detector	
Magnesium	1.755	g/cc	6127.15	5922.31	cps
Aluminum	2.670	g/cc	1141.85	3762.09	cps
Spine Angle = 74.89			Density/Spine Ratio = 0.526		
	Size		Reading		
Small Ring	4.50	in	1.02		
Large Ring	15.00	in	1.15		

Compensated Neutron Calibration Report

Serial Number: 207-MW
 Tool Model: M&W
 Calibration Performed: SUN JUL 15 10:30:30 2018

Detector	Readings	Target	Normalization
Short Space	6240.00 cps	1000.00 cps	1.6025
Long Space	460.00 cps	1000.00 cps	1.9500

Gamma Ray Calibration Report

Serial Number: 89
 Tool Model: M&W
 Calibration Performed: Sun Jul 15 05:37:08 2018

Calibrator Value: 1.0 GAPI

Background Reading: 0.0 cps
 Calibrator Reading: 1.0 cps

Sensitivity: 0.6000 GAPI/cps



PIONEER

Pioneer Energy Services

Company	VAL ENERGY, INC.
Well	WRIGHT FARMS #1-2
Field	UNKNOWN
County	SHERMAN
State	KANSAS