

MICRO LOG

Company STEWART PRODUCERS, INC.
 Well VOGEL #1
 Field
 County NESS State KANSAS

Location: API #: 15-135-26033-0000
 335' FSL & 2305' FWL
 SEC 23 TWP 19S RGE 26W
 Permanent Datum GROUND LEVEL Elevation 2597
 Log Measured From KELLY BUSHING 5' A.G.L
 Drilling Measured From KELLY BUSHING
 Other Services CDL/CNL/PE DIL
 Elevation K.B. 2602 D.F. 2600 G.L. 2597

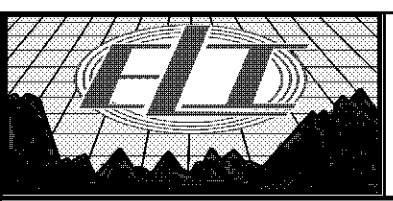
Date	12/13/18
Run Number	TWO
Depth Driller	4640
Depth Logger	4643
Bottom Logged Interval	4641
Top Log Interval	3800
Casing Driller	8 5/8" @ 220
Casing Logger	220
Bit Size	7 7/8
Type Fluid in Hole	CHEMICAL MUD
Density / Viscosity	9.5/56
PH / Fluid Loss	9.5/8.0
Source of Sample	FLOWLINE
Rm @ Meas. Temp	.80 @ 62F
Rmt @ Meas. Temp	.60 @ 62F
Rmc @ Meas. Temp	.96 @ 62F
Source of Rmf / Rmc	MEASUREMENT
Rm @ BHT	.40 @ 122F
Time Circulation Stopped	2 HOURS
Time Logger on Bottom	////
Maximum Recorded Temperature	122F
Equipment Number	3802
Location	HAYS, KANSAS
Recorded By	JASON CAPPELLUCCI
Witnessed By	DAVE GOLDAK
	ROBERT STEWART

<<< Fold Here >>>

All interpretations are opinions based on inferences from electrical or other measurements and we cannot and do not guarantee the accuracy or correctness of any interpretation, and we shall not, except in the case of gross or willful negligence on our part, be liable or responsible for any loss, costs, damages, or expenses incurred or sustained by anyone resulting from any interpretation made by any of our officers, agents or employees. These interpretations are also subject to our general terms and conditions set out in our current Price Schedule.

Comments

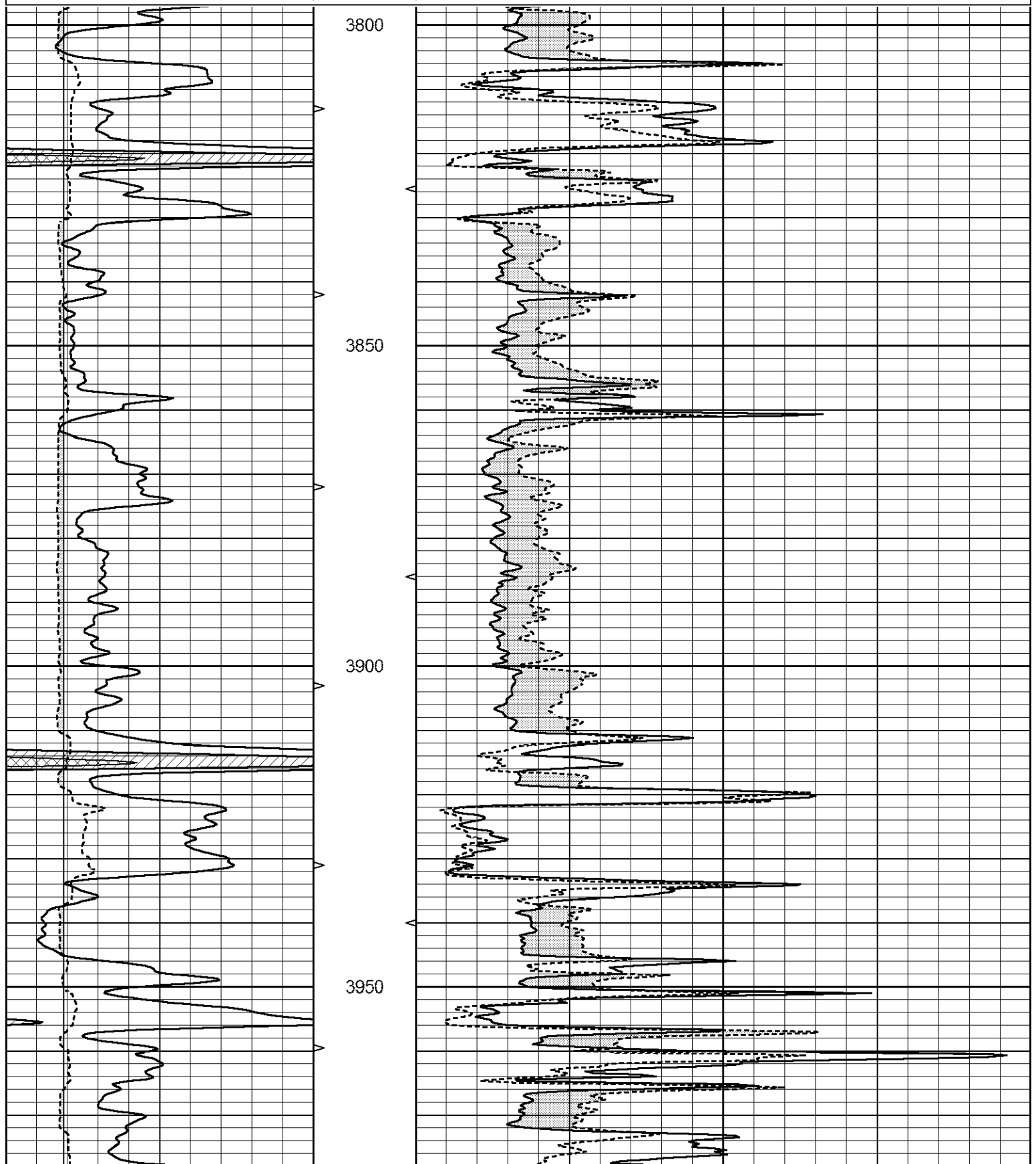
THANK YOU FOR USING ELI WIRELINE SERVICES, HAYS, KS. (785) 628-6395
 DIRECTIONS
 BEELER, KS. - 5 SOUTH TO RD. 80 - 1 1/2 EAST - NORTH INTO

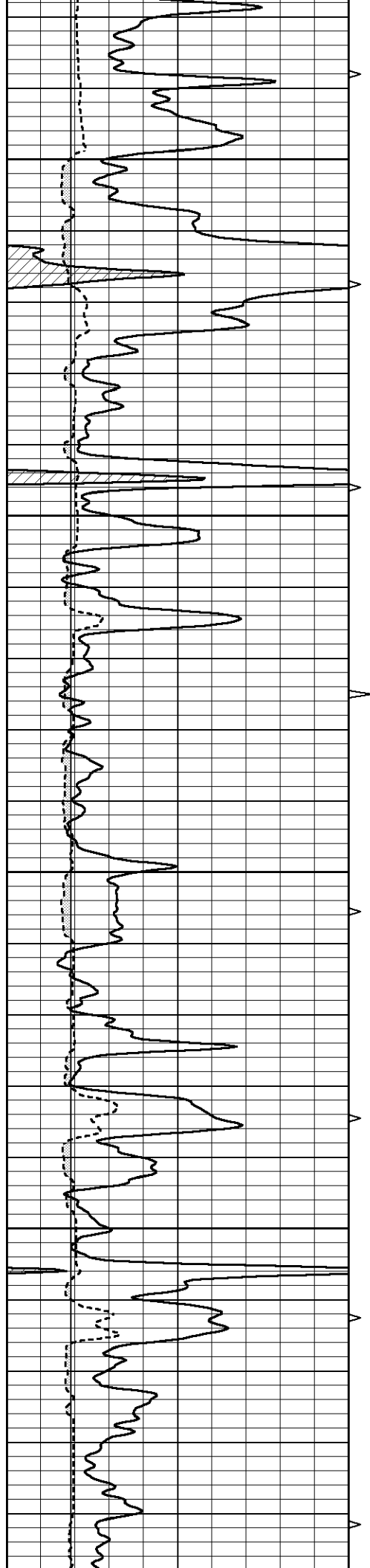


MAIN SECTION

Database File 3429pe8.db
 Dataset Pathname pass6.1
 Presentation Format _micro
 Dataset Creation Thu Dec 13 23:10:32 2018
 Charted by Depth in Feet scaled 1:240

0	GAMMA RAY (GAPI)	150	ABHV	0	MEL1.5 (Ohm-m)	40
6	CALIPER (in)	16	10 (ft3)	0 0	MEL2.0 (Ohm-m)	40
			TBHV			
			0 (ft3)	10		



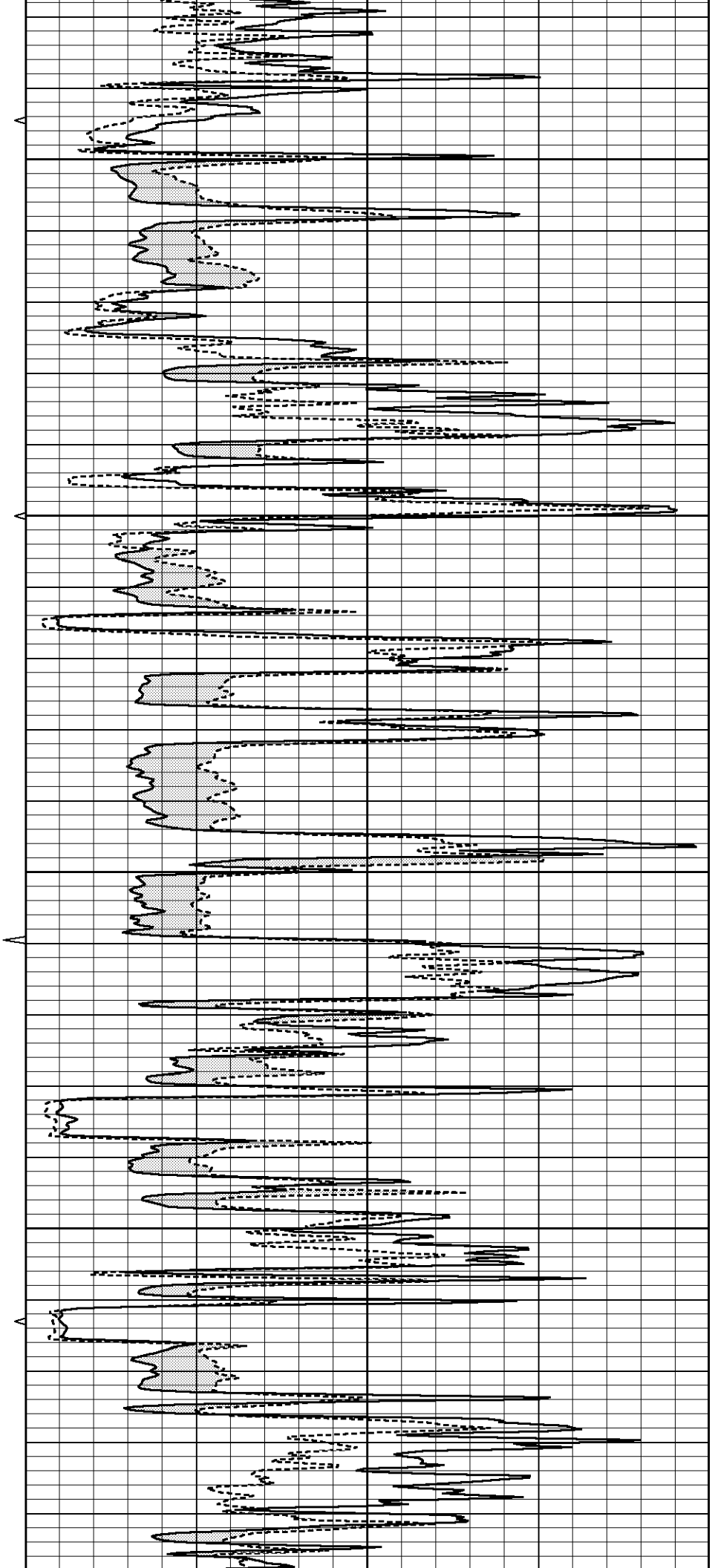


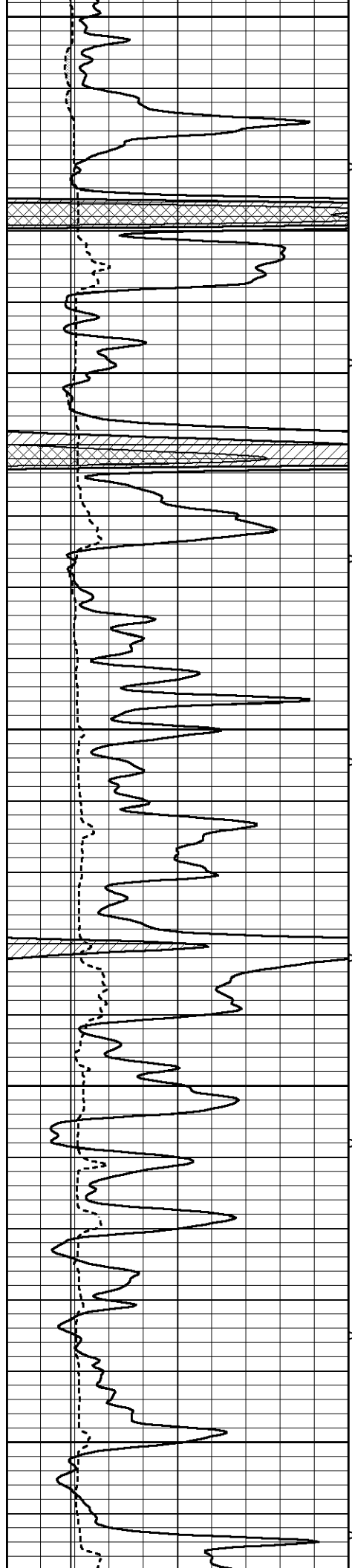
4000

4050

4100

4150





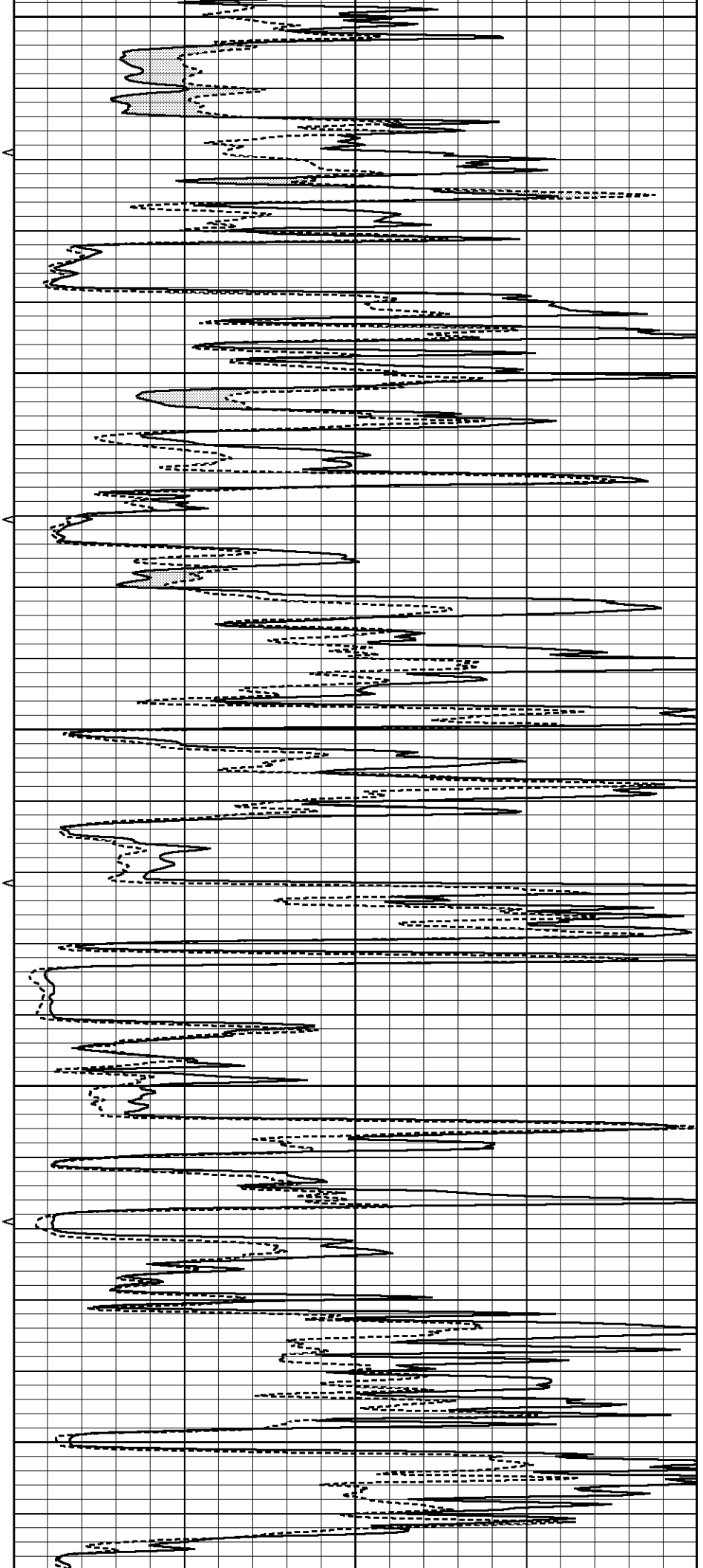
4200

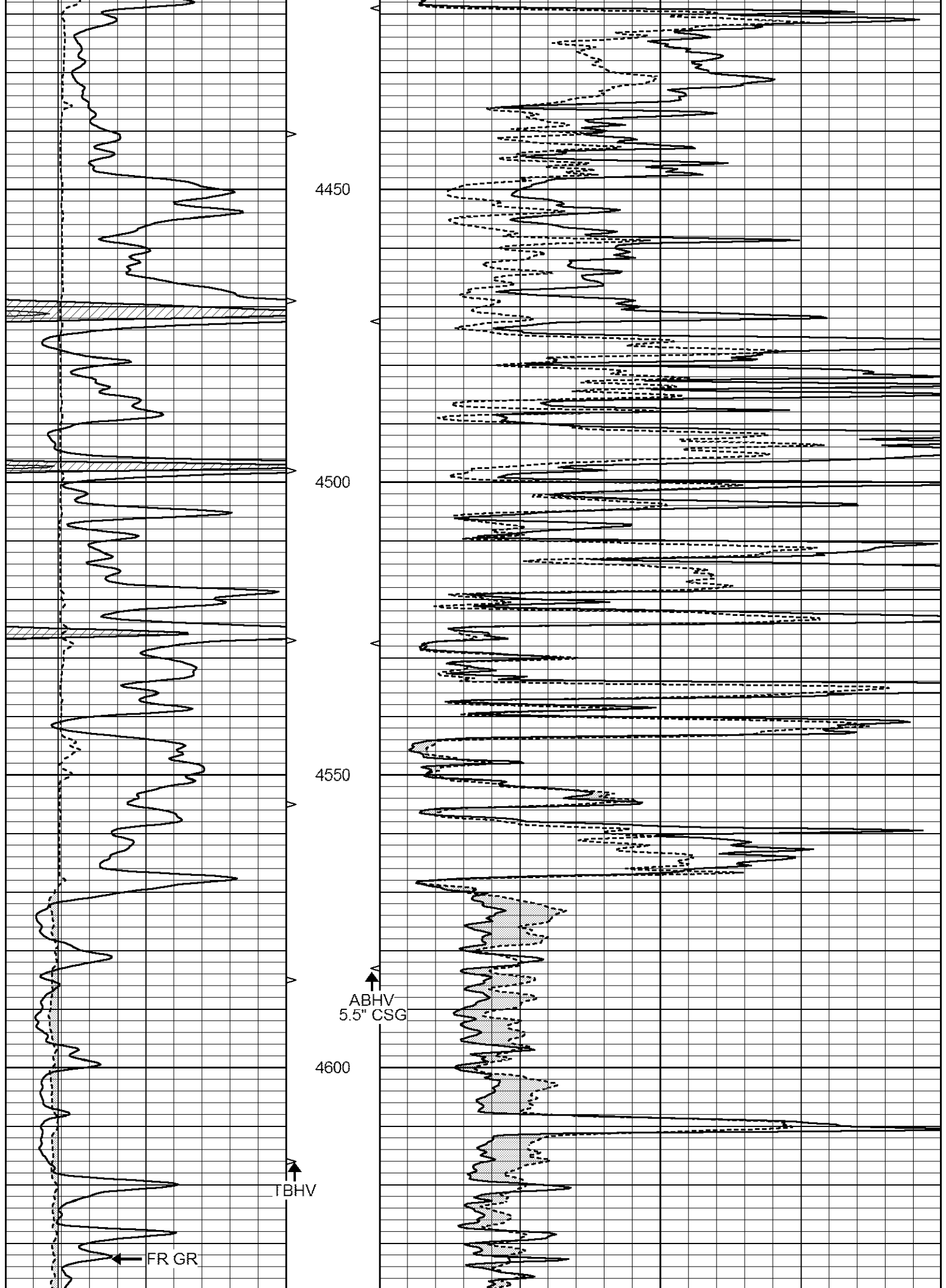
4250

4300

4350

4400





4450

4500

4550

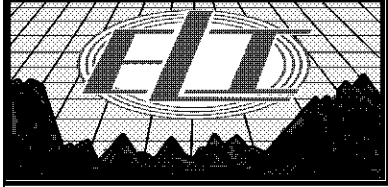
4600

↑
ABHV
5.5" CSG

↑
TBHV

←
FR GR

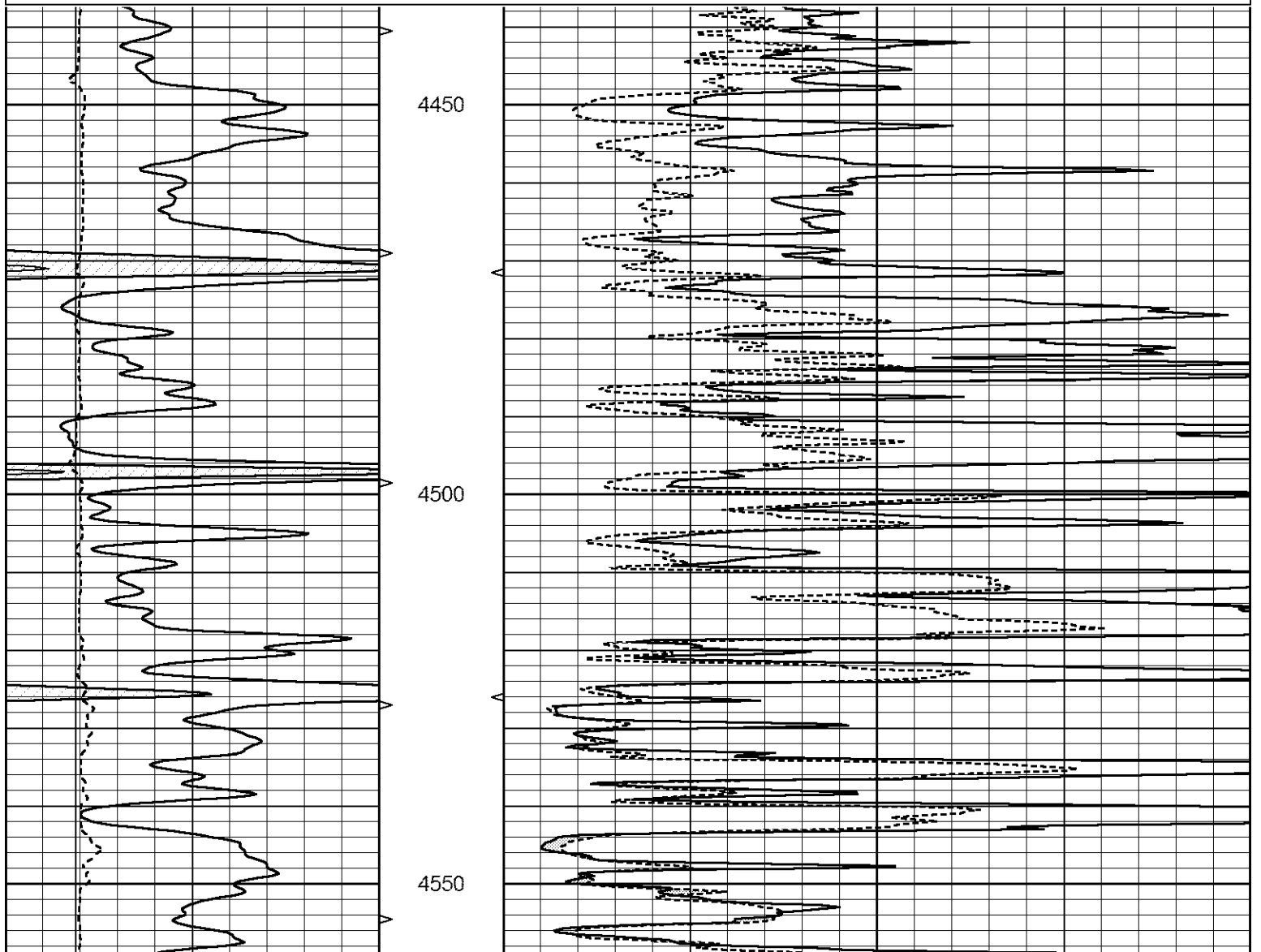
FR MELCAL		LTD 4643		FR MICRO	
0	GAMMA RAY (GAPI)	150	ABHV	0	MEL1.5 (Ohm-m)
6	CALIPER (in)	16	10 (ft3)	0	MEL2.0 (Ohm-m)
			TBHV		
			0 (ft3)	10	

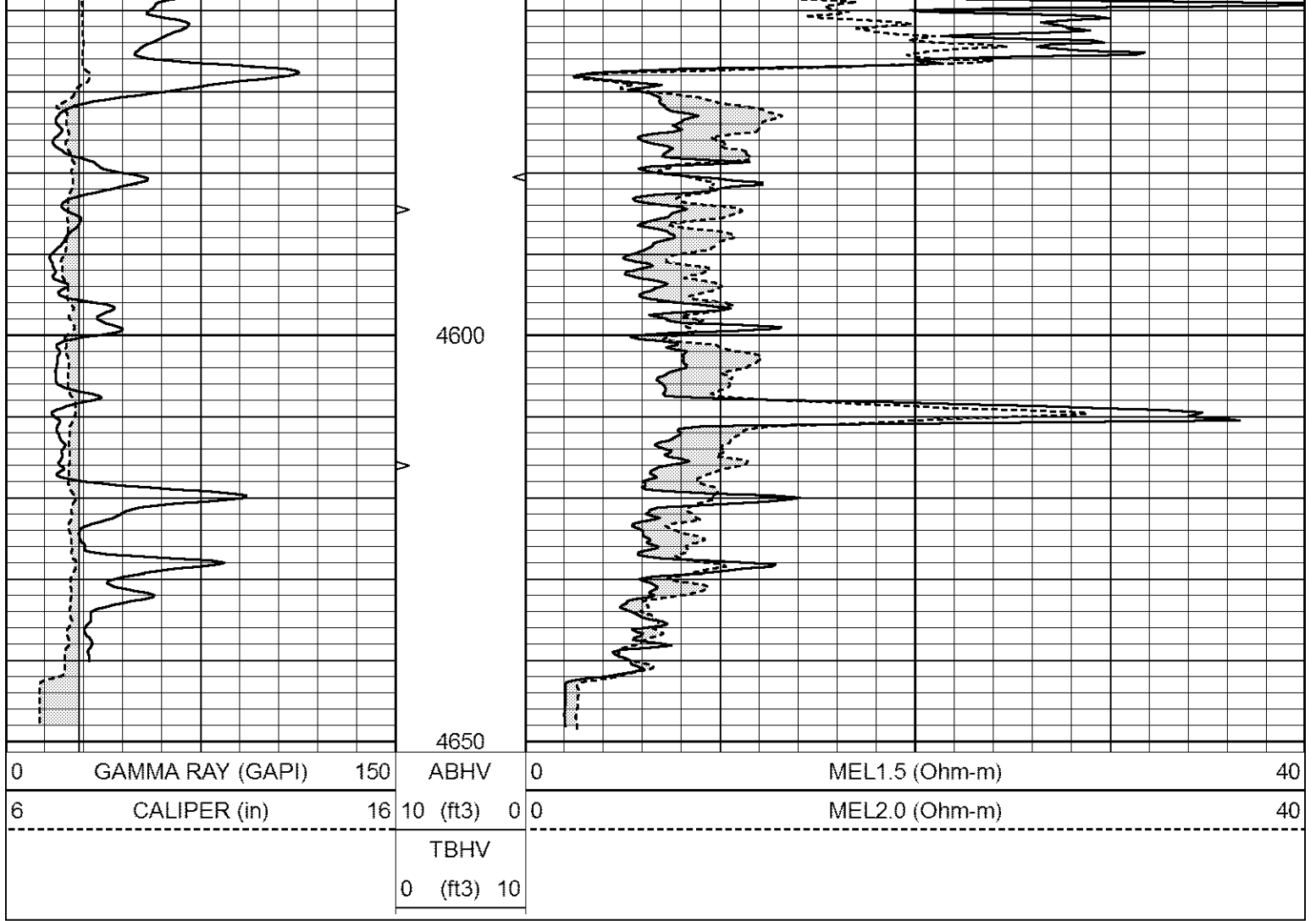


REPEAT SECTION

Database File 3429pe8.db
 Dataset Pathname pass5.1
 Presentation Format _micro
 Dataset Creation Thu Dec 13 23:04:25 2018
 Charted by Depth in Feet scaled 1:240

0	GAMMA RAY (GAPI)	150	ABHV	0	MEL1.5 (Ohm-m)	40
6	CALIPER (in)	16	10 (ft3)	0	MEL2.0 (Ohm-m)	40
			TBHV			
			0 (ft3)	10		





Calibration Report

Database File 3429pe8.db
 Dataset Pathname pass5.1
 Dataset Creation Thu Dec 13 23:04:25 2018

MICRO_USR Calibration Report

Serial Number:	070911	
Tool Model:	Probel	
Performed:	Fri Mar 09 19:26:46 2018	
Caliper Calibration:	Gain=3.755	Offset=2.950
References	Low Cal	High Cal
Readings	8.000	14.000
	1.451	3.049
1.5" Calibration:	Gain=37.000	Offset=0.000
References	Low Cal	High Cal
Readings	0.000	20.000
	0.004	0.843
2" Calibration:	Gain=65.000	Offset=-1.650
References	Low Cal	High Cal
Readings	0.000	20.000
	0.021	0.810

Microlog Calibration Report

Serial-Model:
Performed:

070911-ProbeL
Sat Apr 11 01:13:01 2015

	Readings			References			Results	
	Zero	Cal		Zero	Cal		m	b
Normal	0.0002	0.4836	V	0.0000	10.0000	Ohm-m	20.6908	-0.0051
Inverse	0.0018	0.6297	V	0.0000	10.0000	Ohm-m	15.9263	-0.0282
Caliper	0.0000	1.0000	V	0.0000	1.0000	in	1.0000	0.0000

Gamma Ray Calibration Report

Serial Number:	070558	
Tool Model:	Probe1	
Performed:	Sat Dec 08 10:58:44 2018	
Calibrator Value:	1.0	GAPI
Background Reading:	0.0	cps
Calibrator Reading:	1.0	cps
Sensitivity:	0.2700	GAPI/cps