



MIDWEST SURVEYS
 LOGGING - PERFORATING - CONSULTING SERVICES
 P.O. Box 68, Osawatomie, KS 66064
 913.755-2128

GAMMA RAY / NEUTRON / CCL

File No.

Company **S&B Operating, LLC**

Well **Barkis No. SB-13**

Field **Paola / Rantoul**

County **Miami** State **Kansas**

Location **2890' FSL & 4170' FEL**

SE-SE-SW-NW

Other Services **Perforate**

Sec. **17** Twp. **16S** Rge. **24E**

Permanent Datum **GL** Elevation **1024'**

Log Measured From **GL** K.B. **NA**

Drilling Measured From **GL** D.F. **NA**

Date **12-24-2018**

Run Number **One**

Depth Diller **719.0**

Depth Logger **676.4**

Bottom Logged Interval **675.4**

Top Log Interval **20.0**

Fluid Level **Full**

Type Fluid **Water**

Density / Viscosity **NA**

Salinity - PPM Cl **NA**

Max. Recorded Temp **NA**

Estimated Cement Top **0.0**

Equipment No. **107** Location **Osawatomie**

Recorded By **Steve Vahlstedt**

Witnessed By **Brad Kramer**

BOREHOLE RECORD			
RUN No.	BIT FROM	TO	SIZE
One	9.875"	00	7.0"
Two	5.875"	22.0	2.875"

CASINGS RECORD			
WGT.	FROM	TO	
17.0	0.0	22.00	
6.5	0.0	709.35	
Set	At	676.40	

<<< Fold Here >>>

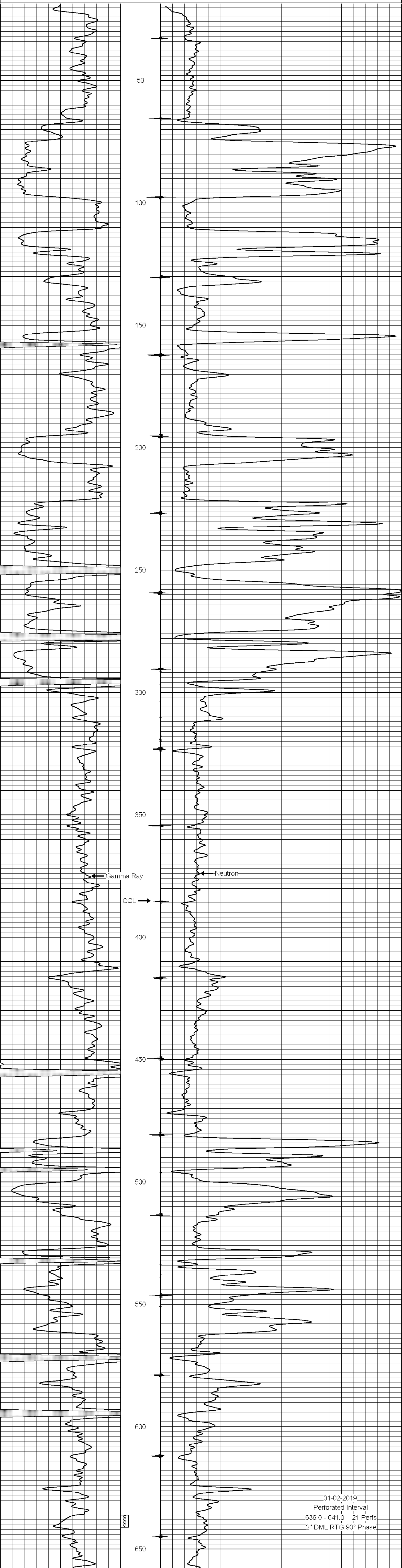
All interpretations are opinions based on inferences from electrical or other measurements and we cannot and do not guarantee the accuracy or correctness of any interpretation, and we shall not, except in the case of gross or willful negligence on our part, be liable or responsible for any loss, costs, damages, or expenses incurred or sustained by anyone resulting from any interpretation made by any of our officers, agents or employees. These interpretations are also subject to our general terms and conditions set out in our current Price Schedule.

Comments

Drilling Contractor :
 Evans Energy & Development, Inc.

Database File: barkis 13-sb.db
 Dataset Pathname: pass1
 Presentation Format: gr-n-ccl
 Dataset Creation: Mon Dec 24 11:45:34 2018 by Log SCH 111116
 Charted by: Depth in Feet scaled 1:240

0	Gamma Ray (cps)	150	-1 CCL 1	10	Neutron (cps)	2100
150	Gamma Ray (cps)	300				



01-02-2019
 Perforated Interval
 636.0 - 641.0 21 Perfs
 2" DML RTG 90° Phase

0	Gamma Ray (cps)	150	-1 CCL 1	10	Neutron (cps)	2100
150	Gamma Ray (cps)	300				