



**MICRO  
RESISTIVITY  
LOG**

Company Palomino Petroleum  
 Well Cochrer #1  
 Field Wildcat  
 County Gove  
 State Kansas

Company Palomino Petroleum  
 Well Cochrer #1  
 Field Wildcat  
 County Gove State Kansas

Location: API #: 15 063 22339  
 1835' FSL & 1000' FWL  
 SEC 7 TWP 15S RGE 26W  
 Permanent Datum Ground Level Elevation 2391'  
 Log Measured From KB 5' AGL  
 Drilling Measured From KB  
 Other Services  
 DIL  
 CDNL/PE  
 BCS  
 Elevation  
 K.B. 2396'  
 D.F. 2395'  
 G.L. 2391'

Date	10-5-18
Run Number	Two
Depth Driller	4416'
Depth Logger	4415'
Bottom Logged Interval	4393'
Top Log Interval	3400'
Casing Driller	8 5/8" @ 218'
Casing Logger	218'
Bit Size	7 7/8"
Type Fluid in Hole	Chemical Mud
Density / Viscosity	9.2/59
PH / Fluid Loss	10.5/6.4
Source of Sample	Pit
Rm @ Meas. Temp	2.0@74degf
Rmf @ Meas. Temp	1.5@74degf
Rmc @ Meas. Temp	2.4@74degf
Source of Rmf / Rmc	Calculated
Rm @ BHT	1.3@118degf
Time Circulation Stopped	11:15 a.m
Time Logger on Bottom	4:21 a.m
Maximum Recorded Temperature	118degf
Equipment Number	T127
Location	Hays, KS
Recorded By	C. Patterson
Witnessed By	Mr Andrew Stenzel

<<< Fold Here >>>

All interpretations are opinions based on inferences from electrical or other measurements and we cannot and do not guarantee the accuracy or correctness of any interpretation, and we shall not, except in the case of gross or willful negligence on our part, be liable or responsible for any loss, costs, damages, or expenses incurred or sustained by anyone resulting from any interpretation made by any of our officers, agents or employees. These interpretations are also subject to our general terms and conditions set out in our current Price Schedule.

**Comments**

From Quinter Exit ,South out of Quinter, KS on Castle Rock Rd/Gove 72. 20 mi. to Gove F.,  
 Then 1.1 mi West on Gove F To Gove 70, 0.4 mi. South on Gove 70, East into location

Thanks for using Gemini Wireline LLC  
 785-625-1182

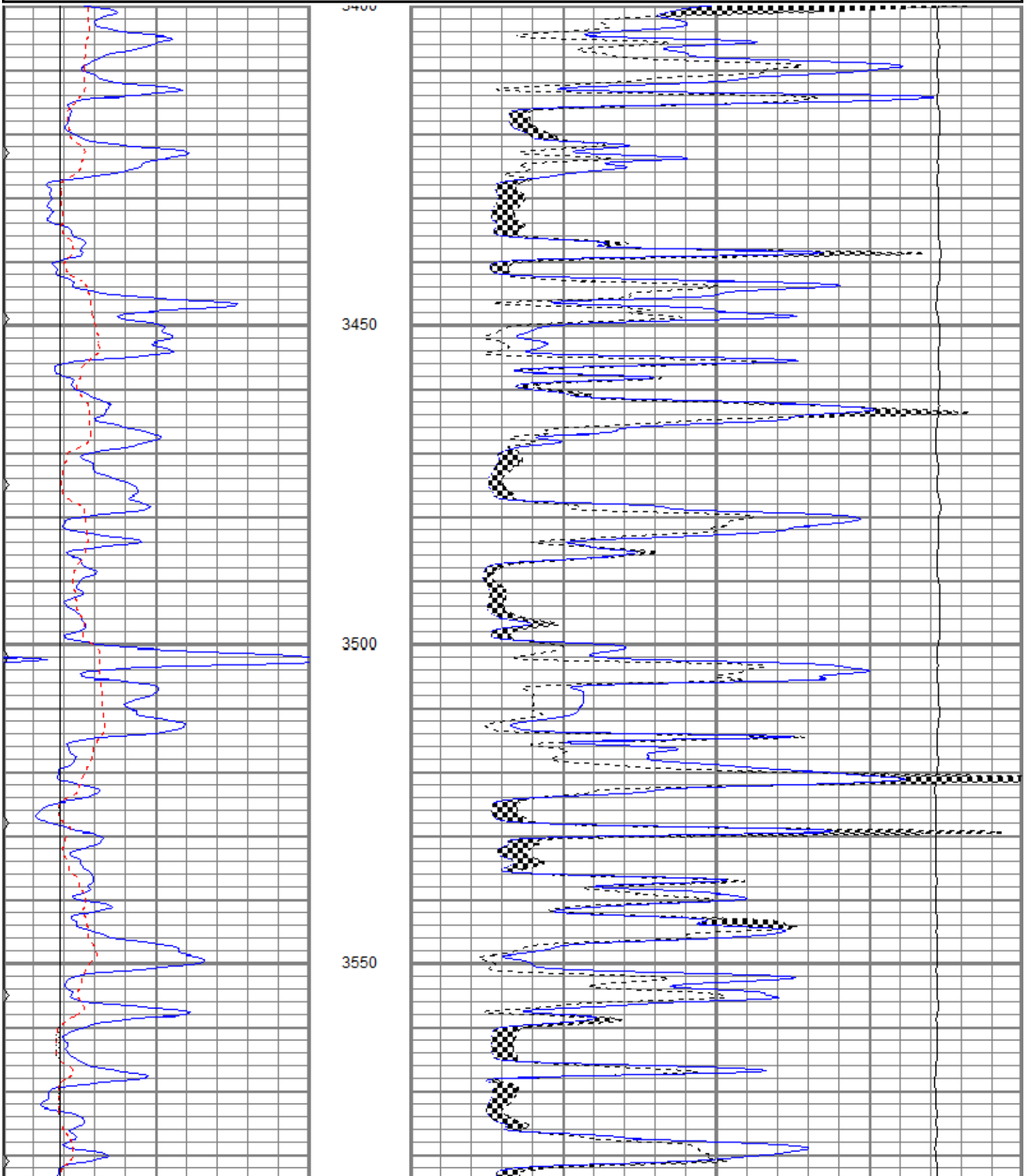


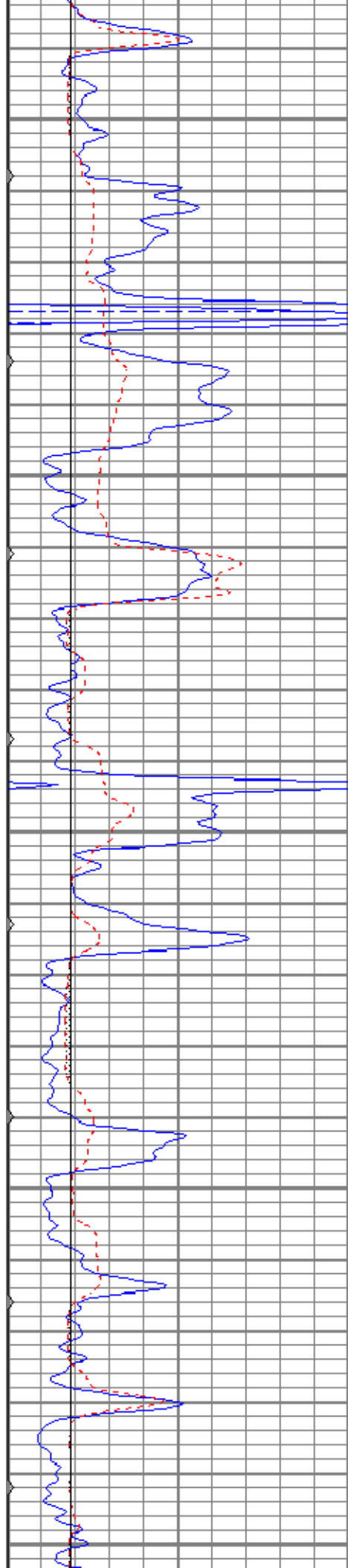
**MAIN PASS**

Database File ppcochener#1oh.db  
 Dataset Pathname pass5.1  
 Presentation Format kml  
 Dataset Creation Sat Oct 06 06:06:42 2018  
 Charted by Depth in Feet scaled 1:240

0	GR (GAPI)	150
6	MCAL (in)	16
6	BOREID (in)	16
0	MINMK	50

0	MN 2" (Ohm-m)	20
0	MI 1" (Ohm-m)	20
10000	LTEN (lb)	0





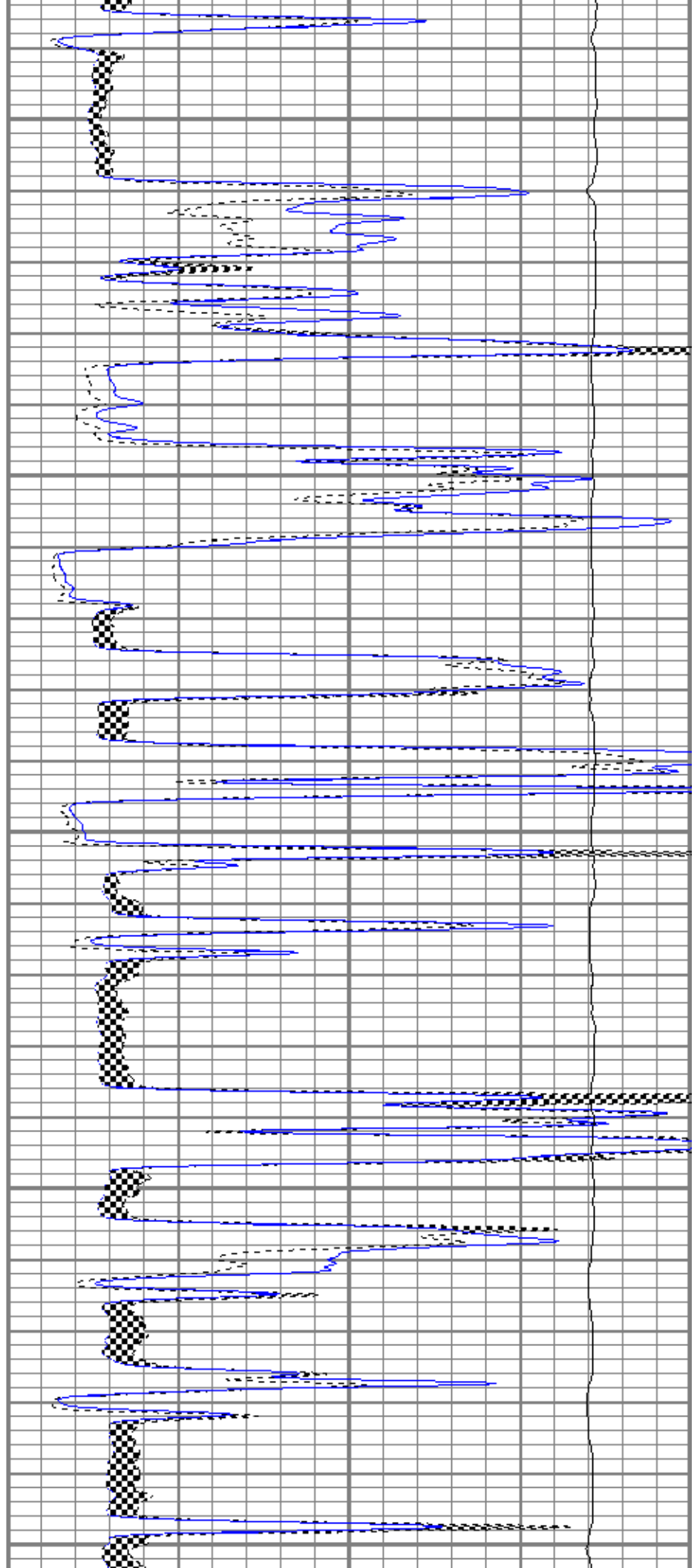
3600

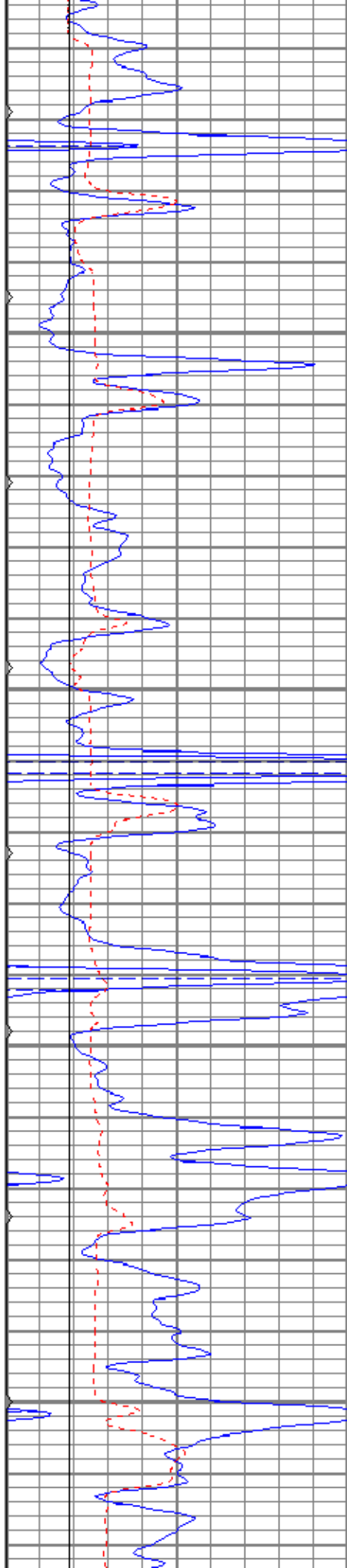
3650

3700

3750

3800



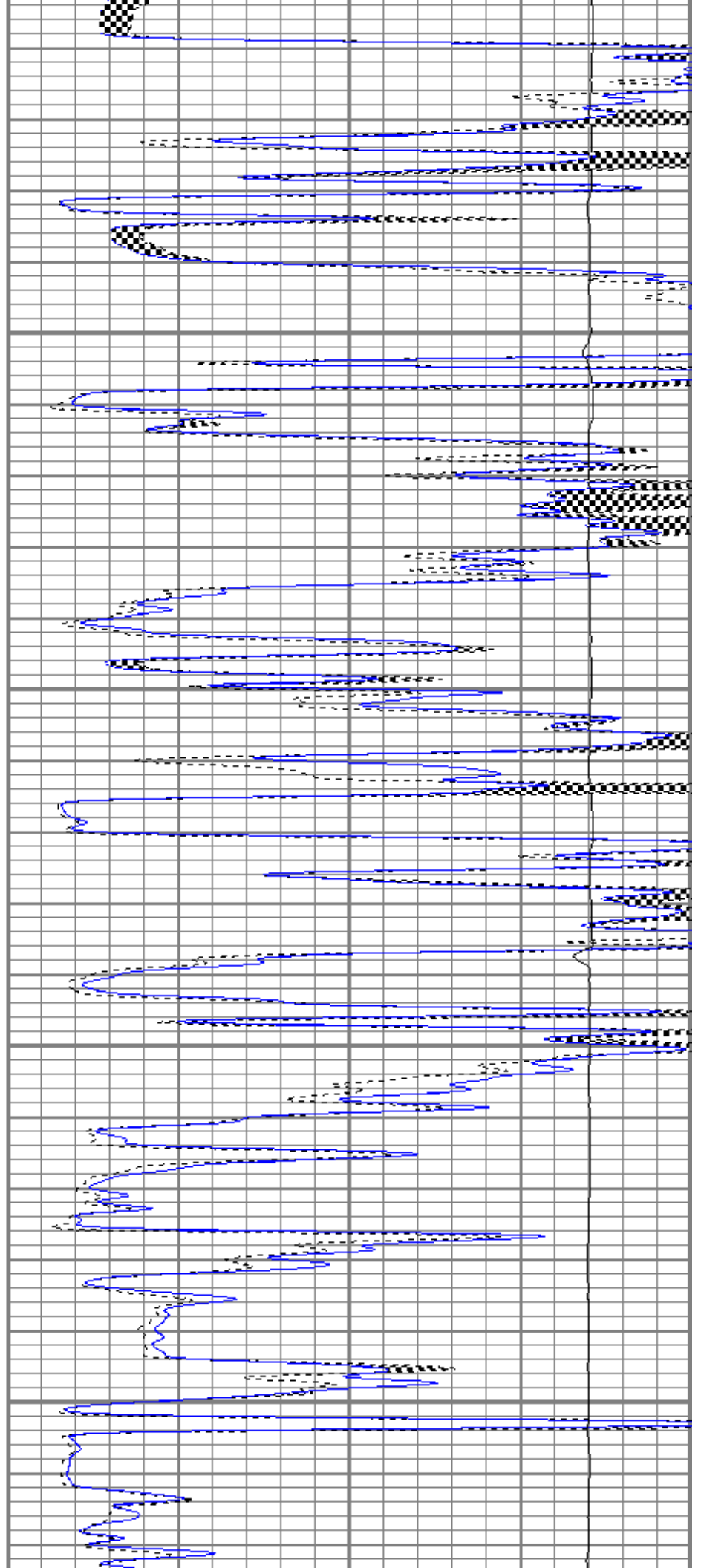


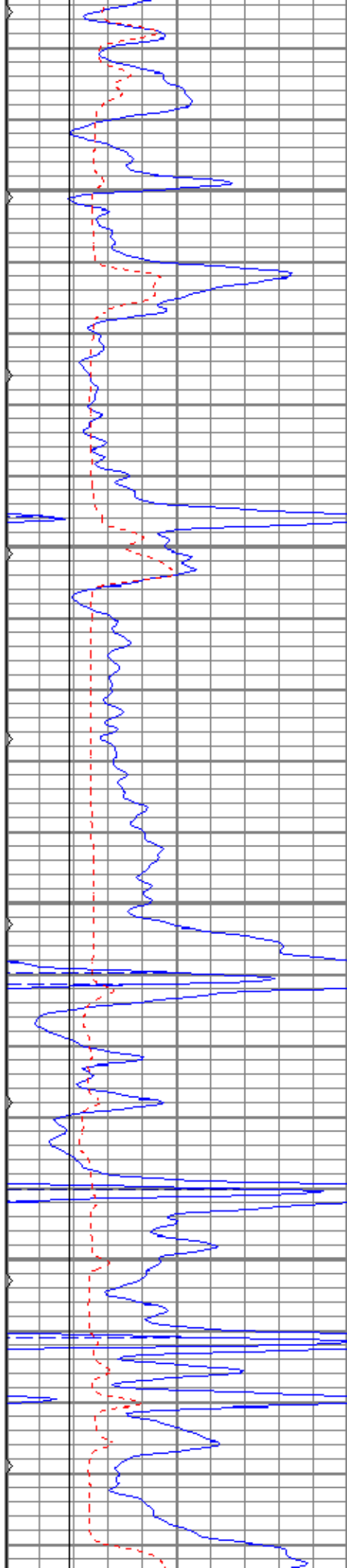
3850

3900

3950

4000



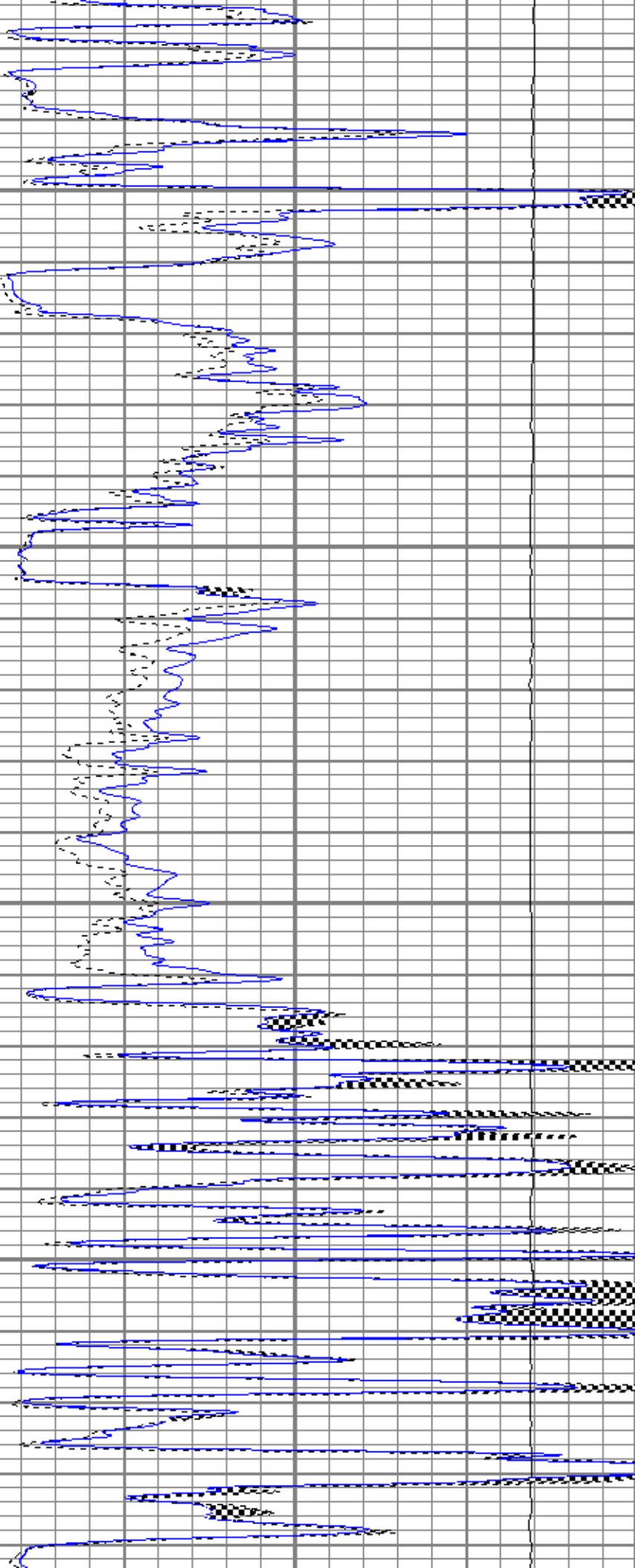


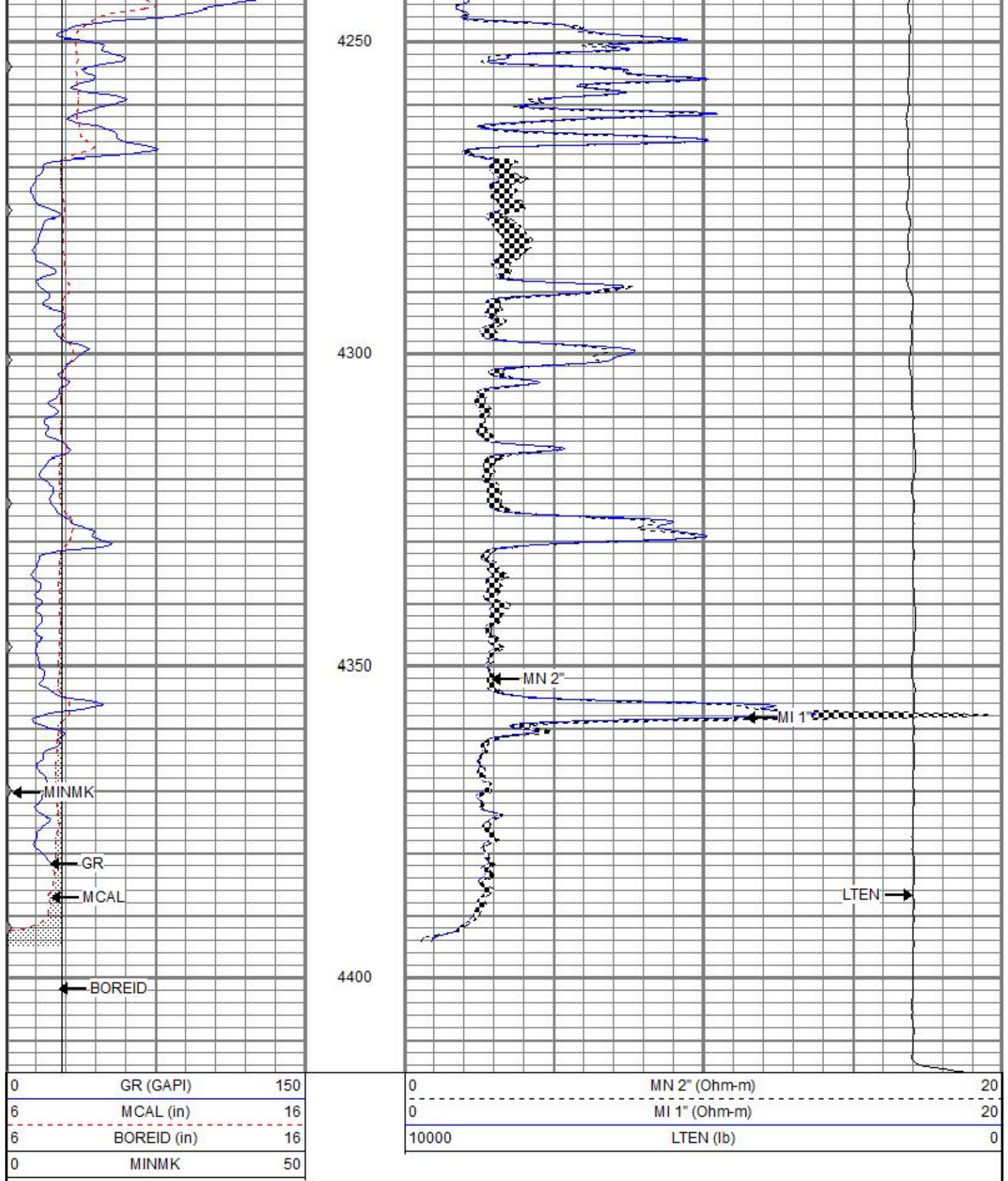
4050

4100

4150

4200



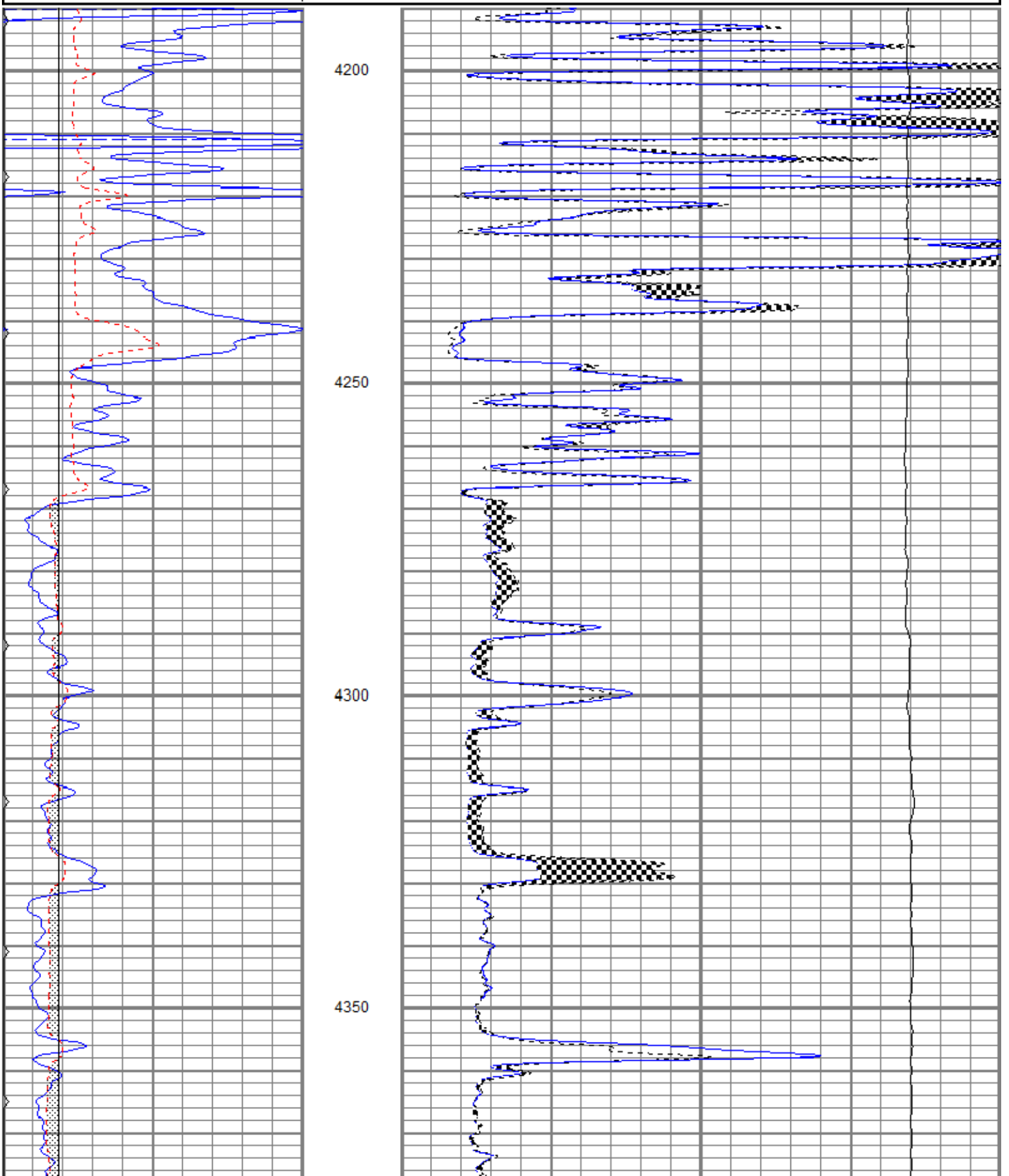


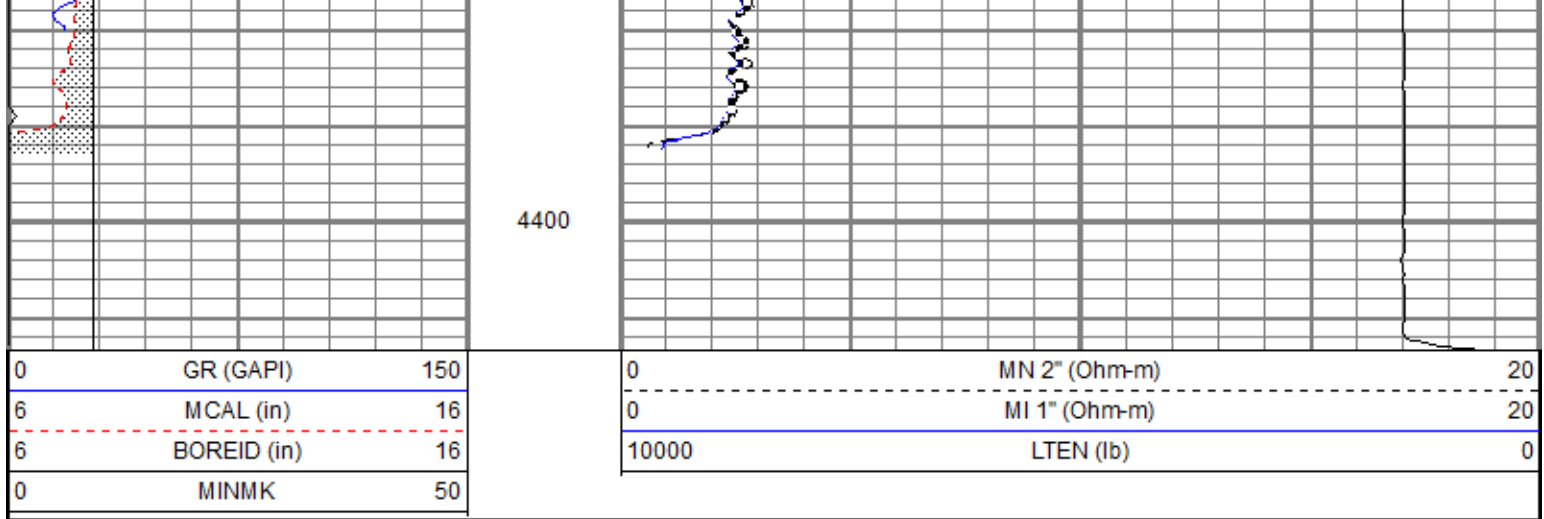
# REPEAT SECTION

Dataset Pathname pass4.2  
 Presentation Format kml  
 Dataset Creation Sat Oct 06 05:53:30 2018  
 Charted by Depth in Feet scaled 1:240

0	GR (GAPI)	150
6	MCAL (in)	16
6	BOREID (in)	16
0	MINMK	50

0	MN 2" (Ohm-m)	20
0	MI 1" (Ohm-m)	20
10000	LTEN (lb)	0





**Calibration Report**

Database File      ppcochener#1oh.db  
 Dataset Pathname    pass5.1  
 Dataset Creation    Sat Oct 06 06:06:42 2018

**Microlog Calibration Report**

Serial-Model:                      9151-Gerhart  
 Performed:                         Sat Oct 06 05:16:18 2018

	Readings			References			Results	
	Zero	Cal		Zero	Cal		m	b
Normal	-0.0237	0.4742	V	0.0000	10.0000	Ohm-m	15.0853	0.5761
Inverse	-0.2575	0.6253	V	0.0000	10.0000	Ohm-m	11.3268	0.9171
Caliper	1.0212	2.0456	V	8.5000	15.0000	in	6.3451	2.0202

**Gamma Ray Calibration Report**

Serial Number:                      2001  
 Tool Model:                         OH  
 Performed:                         Sun Nov 12 16:26:41 2017

Calibrator Value:                    1.0                      GAPI

Background Reading:                0.0                      cps  
 Calibrator Reading:                 1.0                      cps

Sensitivity:                         0.7000                   GAPI/cps

Sensor	Offset (ft)	Schematic	Description	Length (ft)	O.D. (in)	Weight (lb)
GR	30.83		CHD-STD	0.50	1.69	1.00
			GR-OH (2001) 2001	3.56	3.25	40.00
MCAL	22.04		ML-Gerhart (9151) Gerhart Micro	9.46	4.00	125.00
MI	22.04					
MN	22.04					
WVF4	14.25		SLT-G (372) Sonic	15.71	3.50	250.00
WVF3	13.25					
WVF2	10.25					
WVF1	9.25		CENT-OHlong Open Hole long Centralizer	4.50	3.50	50.00

Dataset:                      ppcochener#1oh.db: field/well/run1/pass5  
 Total length:                33.73 ft  
 Total weight:                466.00 lb



O.D.: 4.00 in