

Company PALOMINO PETROLEUM
Well COCHENER No. 1
Field WILDCAT

County GOVE State KANSAS
Location: APT # 15-065-22389
185F PLS. & 000' PML

Well WILDCAT
Field WILDCAT
County GOVE
State KANSAS
Segment 7 719P 15E R5E 29W
Formated Point K.B. A.21.1.1.1.1.1.1
Last Measured from KELLY BUSHING
Dated Measured from OCT 22 2018
Cable Number 4116
Depth Interval 5190' - 5200'

Tool Joint Number P1-06
Equipment Number HMLD-ESBP
Measured by ERNST HOFFMANN
Run Number 7-23
Date 10/22/18
Casing Record Size 8.50
Production String Size 5.12

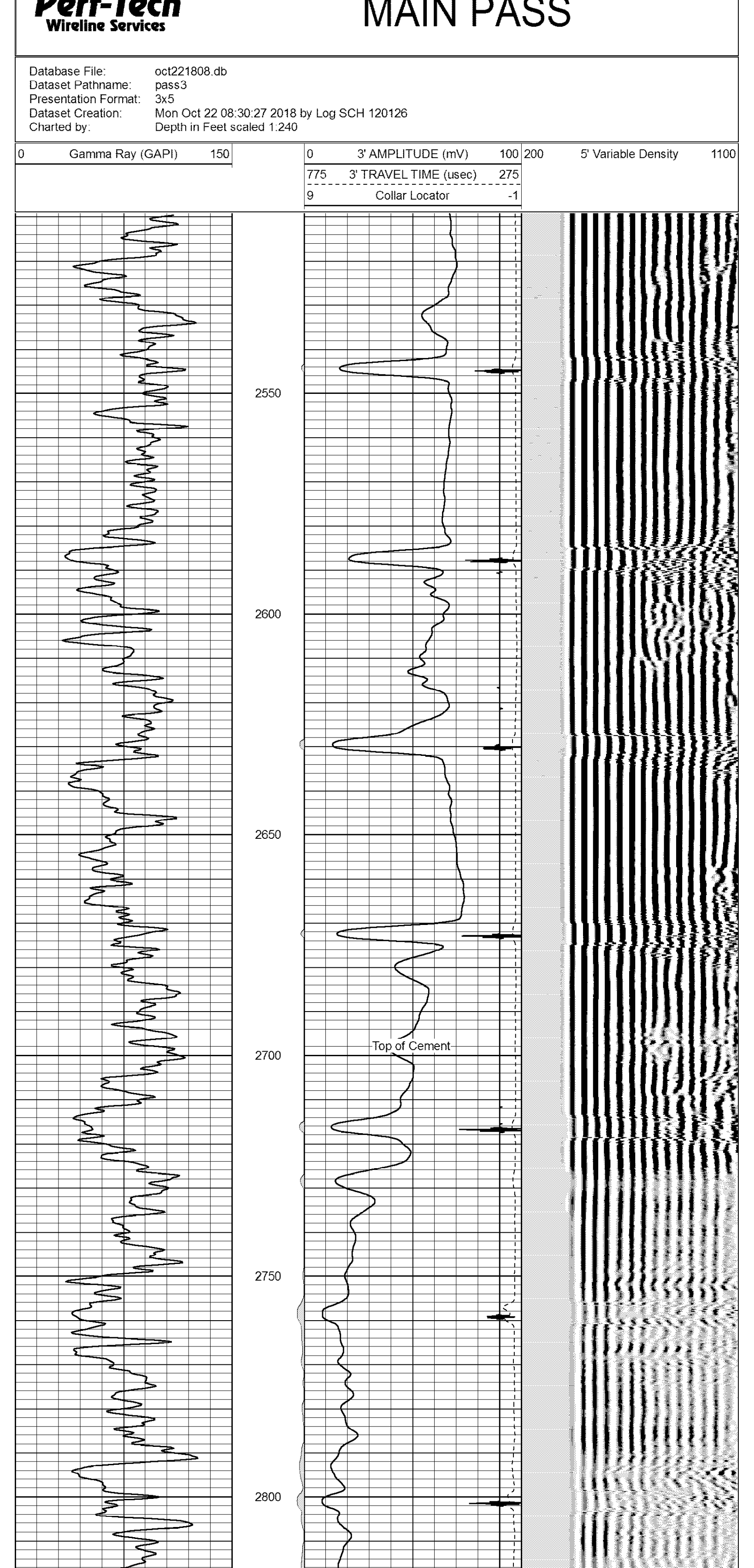
Estimated Cement Volume 1188
Orientation (Azimuth) 1188
Orientation (Vertical) 1188
Elevation (Current) 950

All interpretations are opinions based on inferences from electrical or other measurements and we cannot and do not guarantee the accuracy or correctness of any interpretation, and we shall not, except in the case of gross or willful negligence on our part, be liable or responsible for any loss, costs, damages, or expenses incurred or sustained by anyone resulting from any interpretation made by any of our officers, agents or employees. These interpretations are also subject to our general terms and conditions set out in our current Price Schedule.

Comments
THANK YOU FOR USING
PERF-TECH WIRELINE SERVICES, INC.
(785) 623-3969
QUINTER KS, SOUTH TO F RD,
1 WEST, 1/4 SOUTH,
EAST INTO

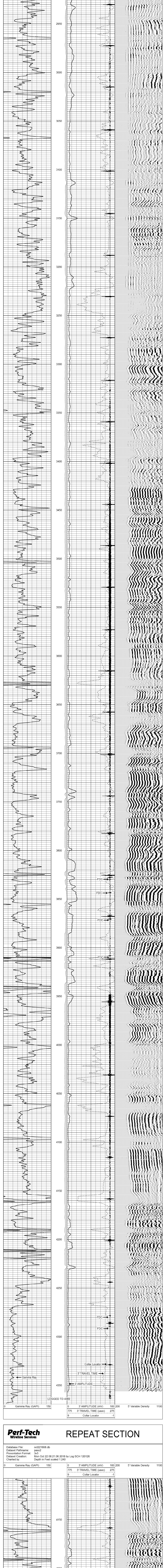
PORT COLLAR

Database File: oct221808.db
Dataset Pathname: pass4
Presentation Format: 3x5
Dataset Creation: Mon Oct 22 09:09:2018 by Log SCH 120126
Charted by: Depth in Feet scaled 1.240



MAIN PASS

Database File: oct221808.db
Dataset Pathname: pass3
Presentation Format: 3x5
Dataset Creation: Mon Oct 22 08:30:27 2018 by Log SCH 120126
Charted by: Depth in Feet scaled 1.240



REPEAT SECTION

Database File: oct221808.db
Dataset Pathname: pass2
Presentation Format: 3x5
Dataset Creation: Mon Oct 22 08:21:06 2018 by Log SCH 120126
Charted by: Depth in Feet scaled 1.240

