



**DUAL COMP POROSITY
MICRO & DUAL IND LOG**

Company RITCHIE EXPLORATION INC.
Well WHITHAM-SMITH TRUST #1
Field WILDCAT
County WICHITA
State KANSAS

Company RITCHIE EXPLORATION INC.
Well WHITHAM-SMITH TRUST #1
Field WILDCAT
County WICHITA
State KANSAS

Location: API #: 15-203-20342-00-00
2432' & 976' FWL
SEC 35 TWP 16S RGE 37W
Permanent Datum GROUND LEVEL Elevation 3344
Log Measured From KELLY BUSHING
Drilling Measured From KELLY BUSHING
Other Services
DIL/MEL
BHCS
Elevation
K.B. 3352'
D.F. N/A
G.L. 3344'

| | | | | | | | |
|------------------------|----------------|------|------|--------|------|------|------|
| Date | 9/7/2018 | | | | | | |
| Run Number | ONE | | | | | | |
| Type Log | CNL/CDL/ML/DIL | | | | | | |
| Depth Driller | 4960' | | | | | | |
| Depth Logger | 4958' | | | | | | |
| Bottom Logged Interval | 4957' | | | | | | |
| Top Logged Interval | 3550' | | | | | | |
| Type Fluid In Hole | CHEMICAL | | | | | | |
| Salinity, PPM CL | 7800 | | | | | | |
| Density | 9.4 | | | | | | |
| Level | FULL | | | | | | |
| Max. Rec. Temp. F | 126 | | | | | | |
| Operating Rig Time | 4 HOURS | | | | | | |
| Equipment -- Location | 91 HAYS | | | | | | |
| Recorded By | IAN MABB | | | | | | |
| Witnessed By | JOHN GOLDSMITH | | | | | | |
| Borehole Record | | | | | | | |
| Run No. | Bit | From | To | Size | Wgt. | From | To |
| ONE | 12.25" | 0' | 263' | 8.625" | 23# | 0' | 221' |
| TWO | 7.875" | 263' | TD | | | | |
| Casing Record | | | | | | | |

<<< Fold Here >>>

All interpretations are opinions based on inferences from electrical or other measurements and Pioneer Wireline Services, LLC cannot and does not guarantee the accuracy or correctness of any interpretation, and Pioneer Wireline Services, LLC will not be liable or responsible for any loss, costs, damages, or expenses incurred or sustained by anyone resulting from any interpretation made by any of our officers, agents or employees.

Comments

N/A DENOTES NOT AVAILABLE OR NON-APPLICABLE.
RUSSEL SPRINGS, KS.
SOUTH TO COUNTY LINE, AND 6 MILES SOUTH TO G RD,
1 MILE WEST , 1/2 NORTH, & EAST INTO

Log Measured From: KELLY BUSHING 8 Ft. Above Permanent Datum

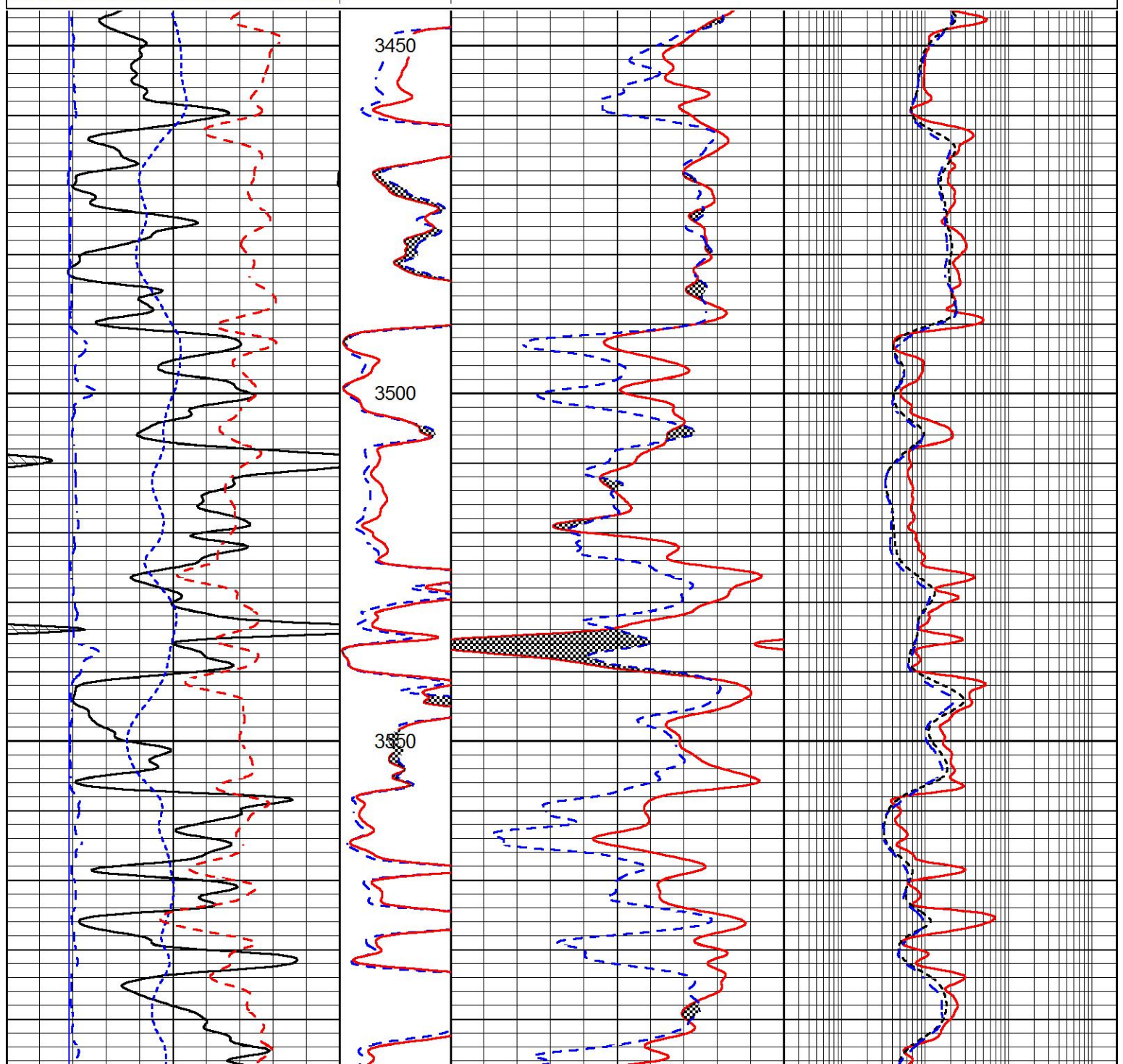
THANK YOU FOR USING PIONEER ENERGY SERVICES
www.pioneerenergy.com 785-625-3858

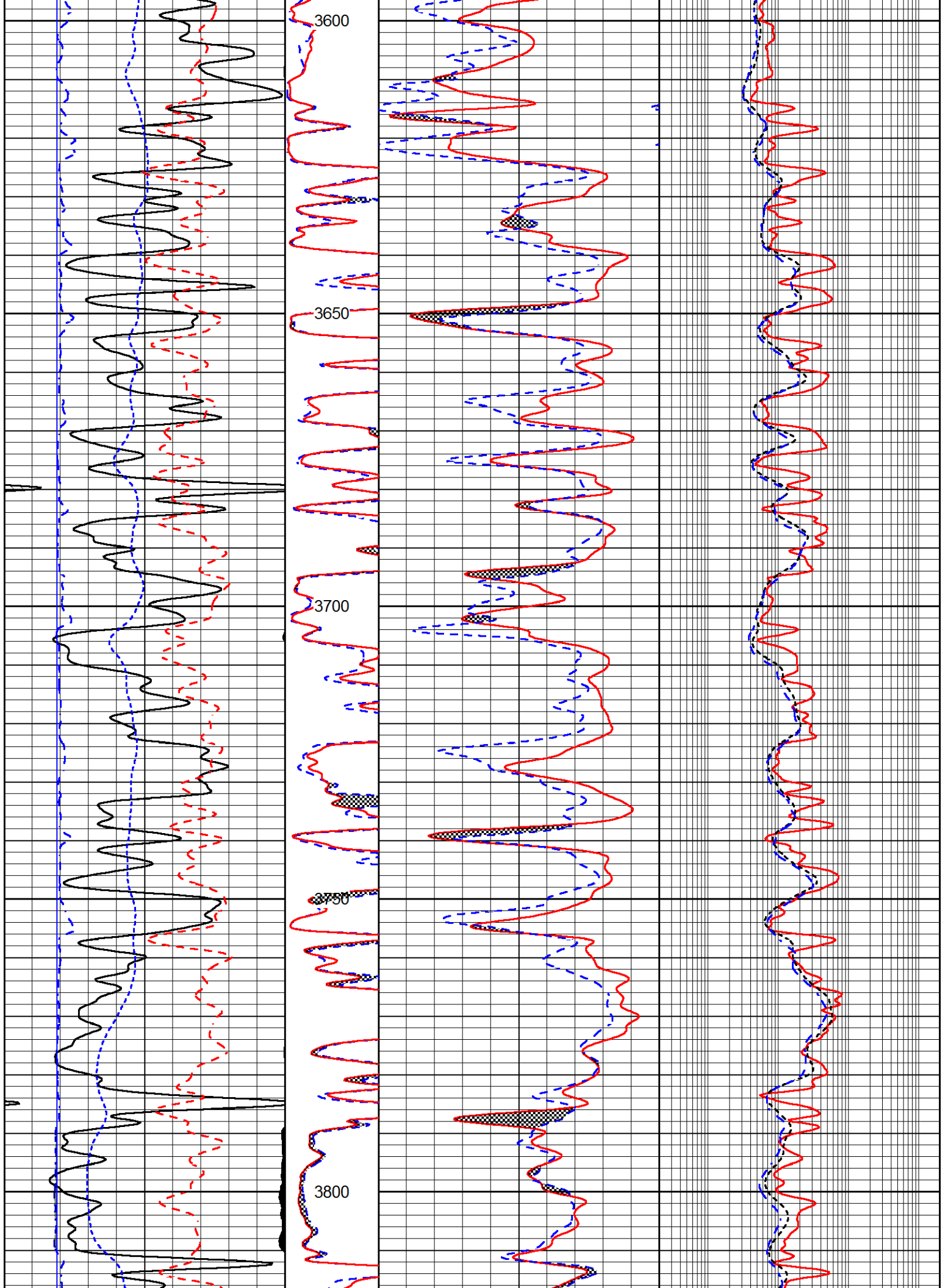
| | |
|--|---|
| <p>Your Pioneer Energy Services Crew Engineer: IAN MABB Operator: Operator: Operator:</p> | <p>This Log Record Was Witnessed By Primary Witness: JOHN GOLDSMITH Secondary Witness: Secondary Witness: Secondary Witness:</p> |
|--|---|

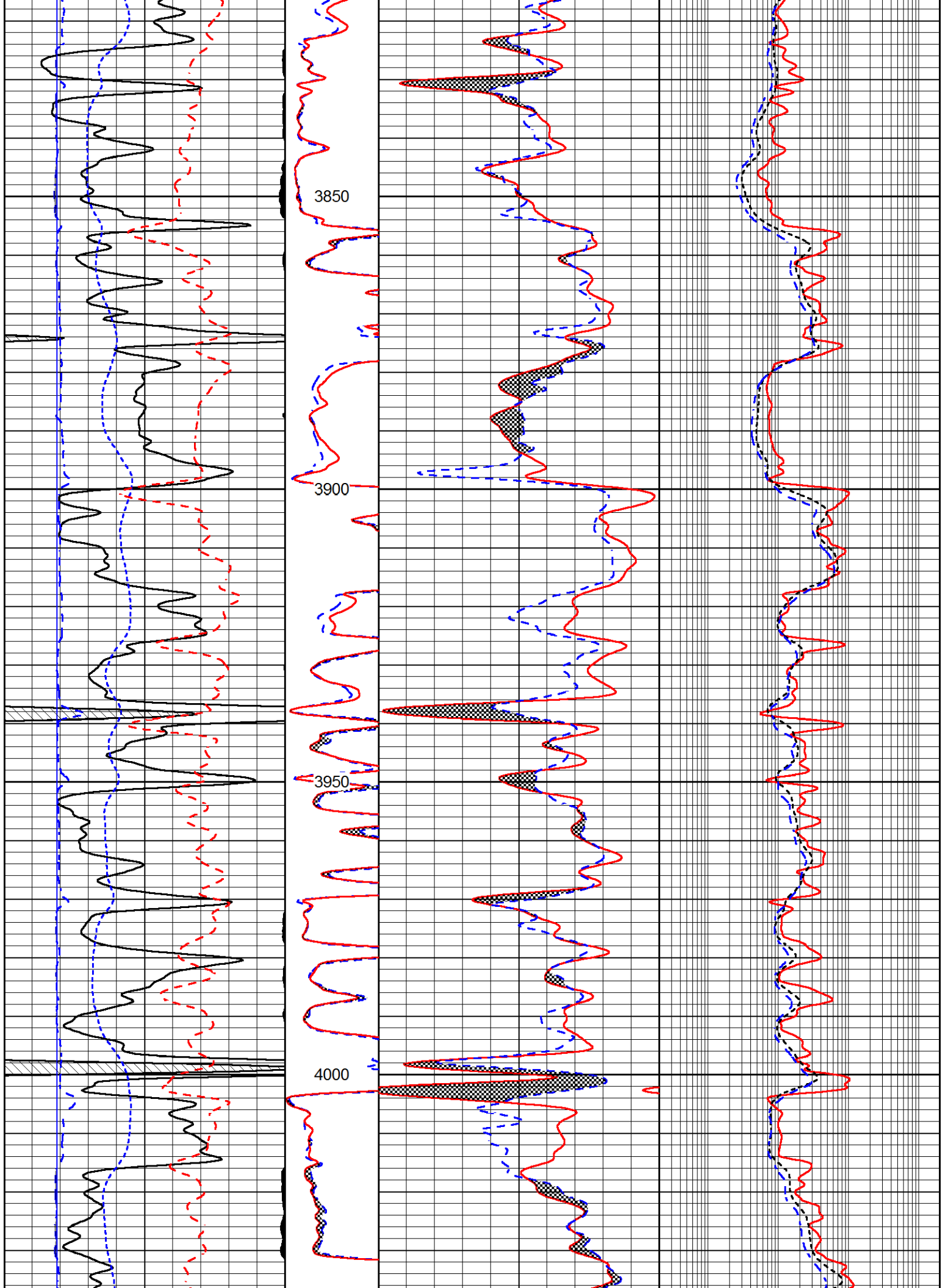
MAIN PASS

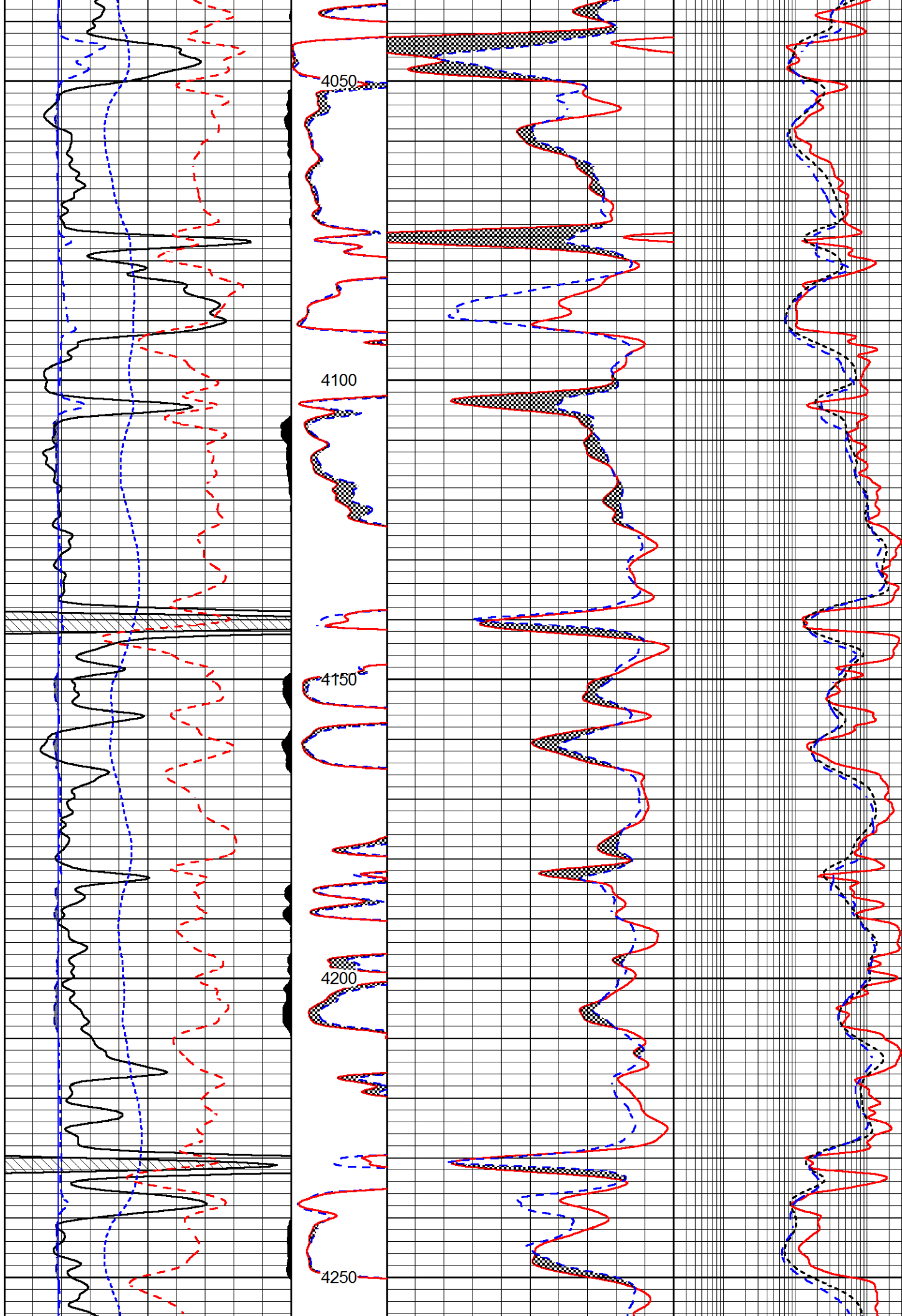
Database File ritchi_exploration_whitham-smith_trust_1.db
 Dataset Pathname stackmel/pass3.1
 Presentation Format RITCHC~1
 Dataset Creation Fri Sep 07 21:21:32 2018
 Charted by Depth in Feet scaled 1:240

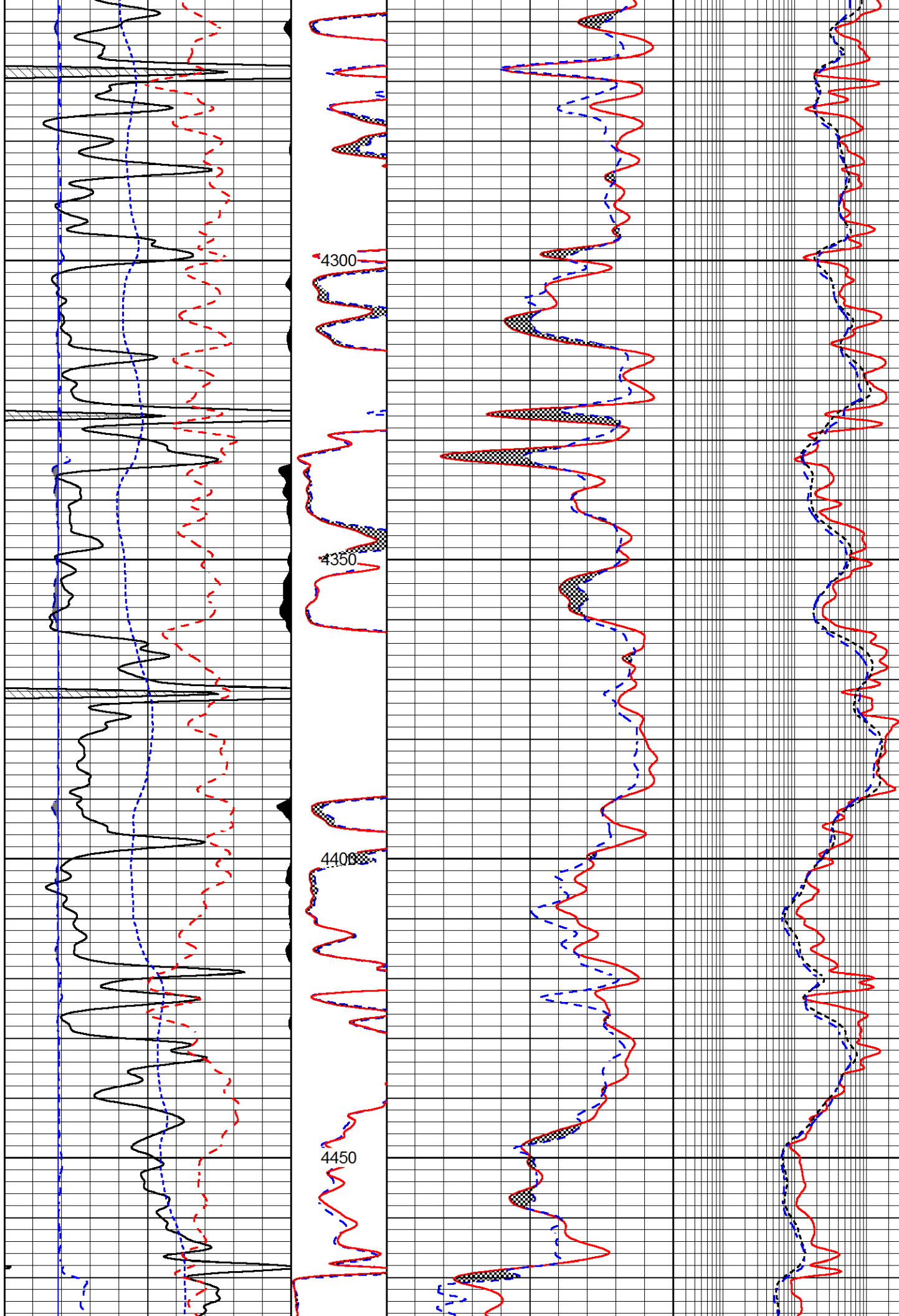
| | | | | | | | | | | |
|-------|------------------|-------|---------|----|-----------------------|---|-----|--------------------------|------------------------|------|
| 0 | Gamma Ray (GAPI) | 150 | MN | 30 | Density Porosity (pu) | 0 | 0.2 | Shallow Guard (Ohm-m) | 2000 | |
| 150 | GR (GAPI) | 300 | (Ohm-m) | 30 | Neutron Porosity (pu) | 0 | 0.2 | Medium Induction (Ohm-m) | 2000 | |
| 6 | Caliper (in) | 16 | 0 | 20 | | | | 0.2 | Deep Induction (Ohm-m) | 2000 |
| 2.875 | DCAL (in) | 7.875 | MI | | | | | | | |
| -200 | SP (mV) | 0 | (Ohm-m) | | | | | | | |
| -160 | Rxo/Rt | 40 | 0 | 20 | | | | | | |

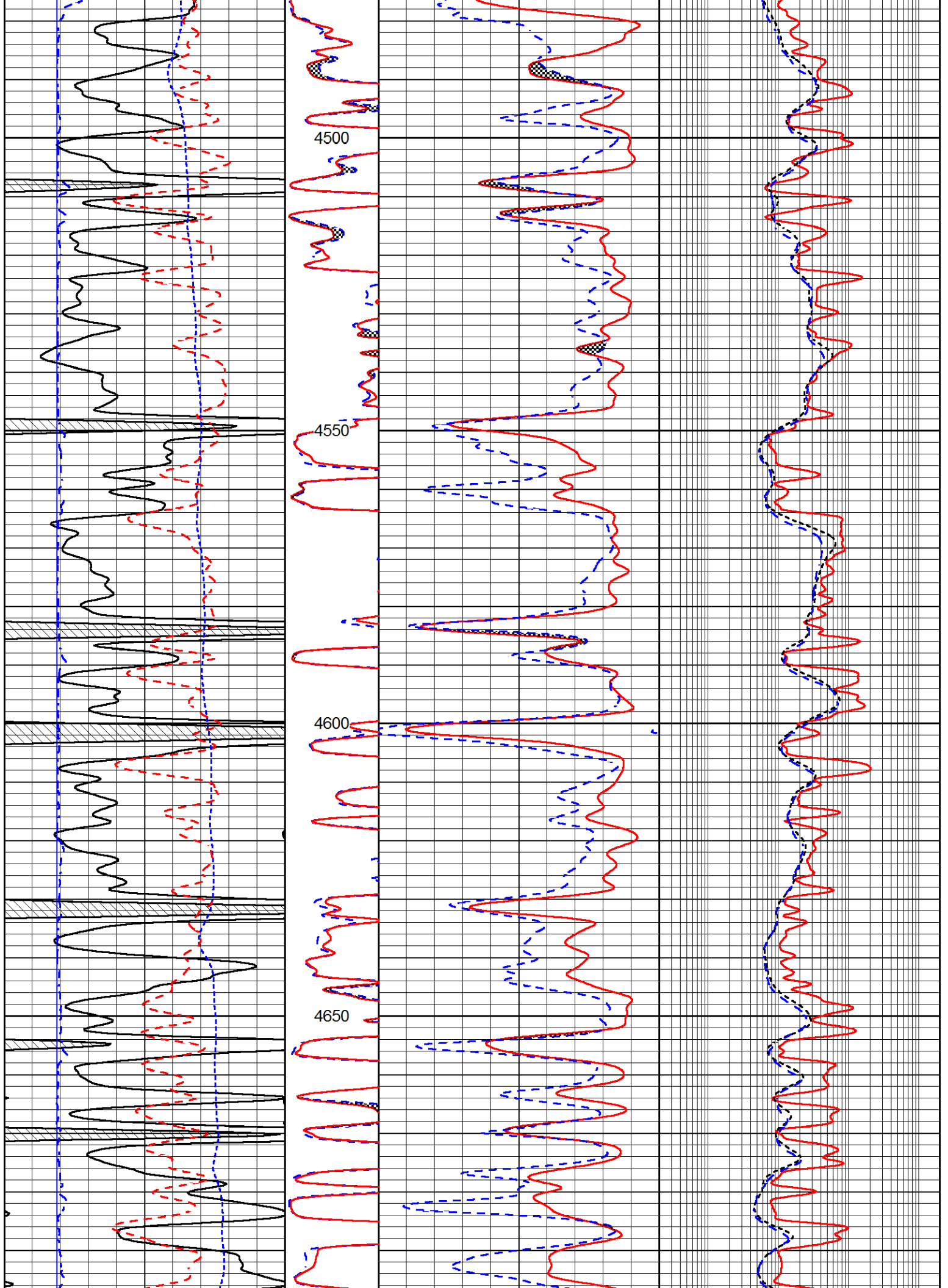


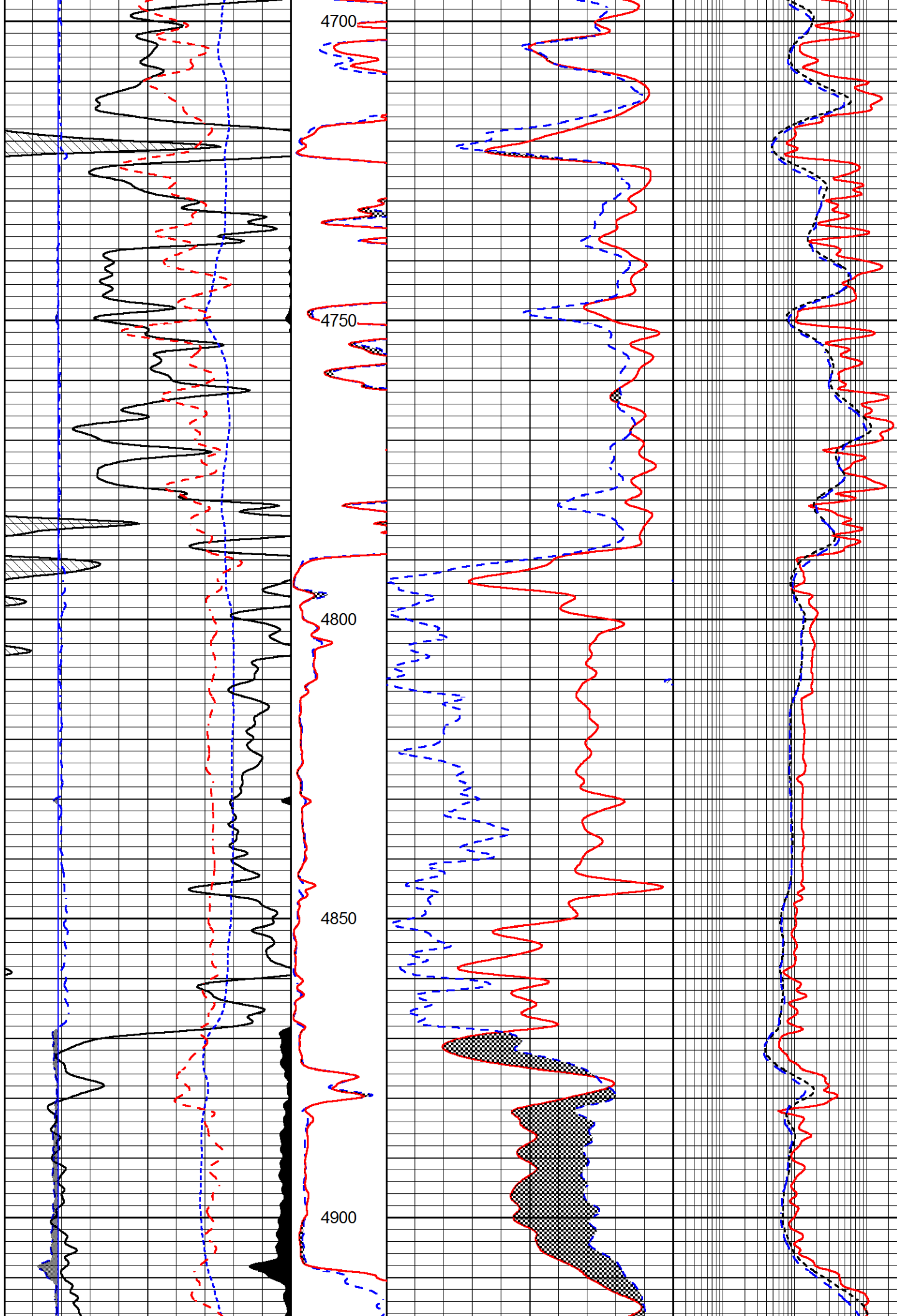


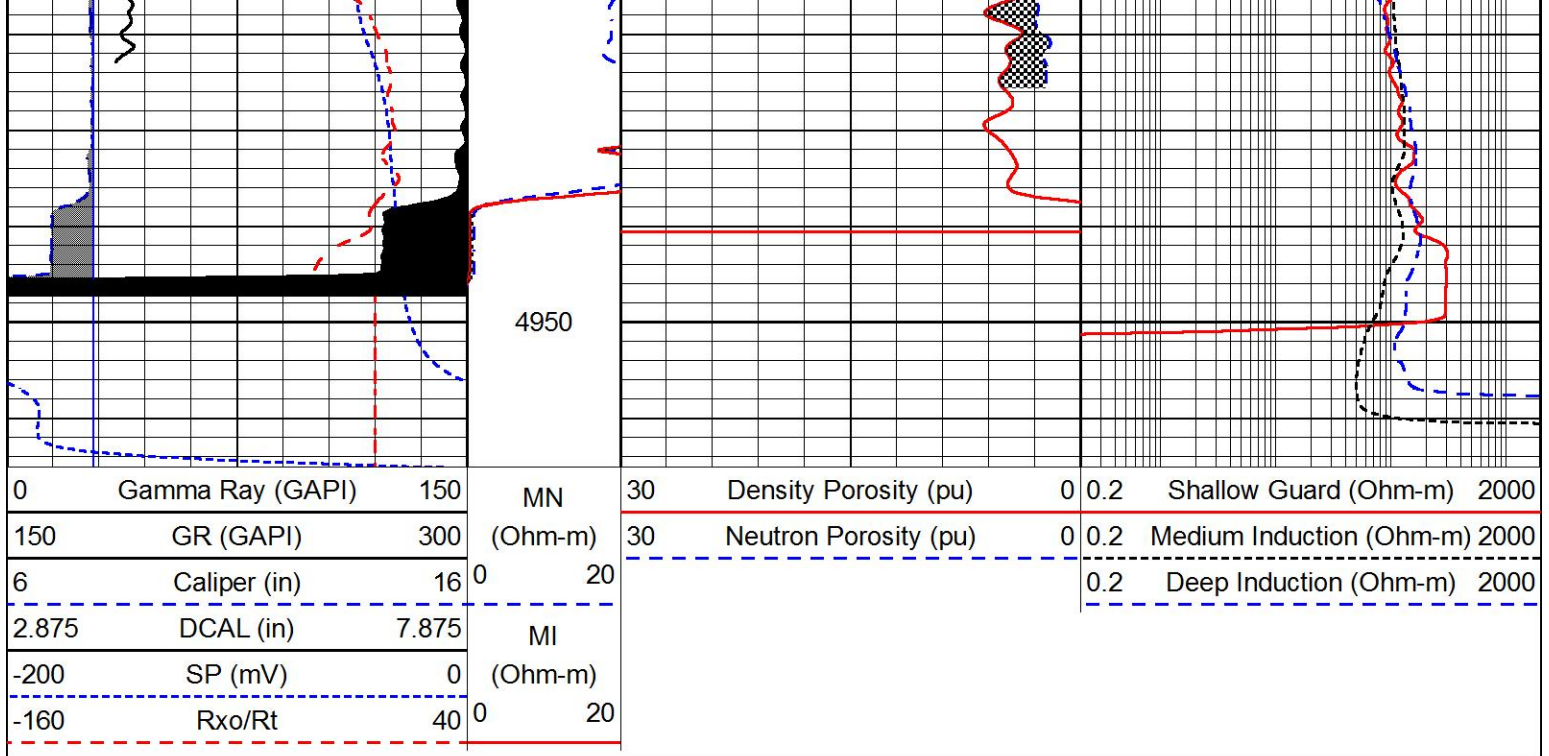












| | |
|---------|--------------------------|
| Company | RITCHIE EXPLORATION INC. |
| Well | WHITHAM-SMITH TRUST #1 |
| Field | WILDCAT |
| County | WICHITA |
| State | KANSAS |